

DIN 15018/H1-B3 load moment: **max. 13050 kNm**
 BGL 2124-0900 lifting capacity: **max. 45 t**
 jib radius: **max. 60,0 m**



TOWER CRANE

WOLFF 60140 B

The leader of the pack.

The leader of the pack: in the field of tower cranes he is called WOLFFKRAN.

„Crane-nificent“ technology allows WOLFFKRAN to bring increased cost-effectiveness and safety to your construction site. WOLFF 60140 B proves this.

WOLFF 60140 B – multipurpose top slewing selfclimbing tower crane with luffing jib according DIN 15018/H1-B3 (BGL group 2124-0900).

Jib, Tower Top

40 m basic jib. Extensions for 50 m and 60 m. Counterjib with built-on hoist unit and control cabinet. Constant counterweight for all jib lengths. Tower top with luffing gear. Lower tower top with two slewing drives, roller race bearing, drivers cabin, and slip ring system.

Hoist Unit, slewing drive, jib Hoist

Hoist unit Hw 301103 with 110 kW-slipring motor, eddy current brake 1:10:18 and three-stage spur gear

with pretensed gear-type clutches and double shoe holding brake. Two slewing drives with counter-safe slipring motors, disk brakes and planetary gears. Luffing gear with 110 kW-slipring motor, eddy current brake and double shoe holding brake.

Electric Equipment

Power supply 400 V, 50 Hz, controls 110V. Contactor control inside cabinet. Protection IP 54. All circuits fused off separately. Polarized “Quick-fix” cable connections. All motors with motor protection (thermo feelers).

Overload Protection

Electric overload protection and permanent control of load and load moment. Limit switch for all working speeds.

Tower Elements, Climbing drive

Tower configuration and totally welded WOLFF system tower elements,

length 5 m each. Detachable hydraulic WOLFF system climbing device KWH 33.

Undercarriage UW 4120

Undercarriage UW 4120 with 12.0 m gauge.

Cross Frame element KRE 4120

WOLFF system cross frame element KRE for stationary installation.

At any time the KRE can be used as WOLFF system undercarriage UW after adding traveling equipment.

Total installed power

slewing part _____ 245 kW


Total Power requirement (with simultaneity factor 8.0)

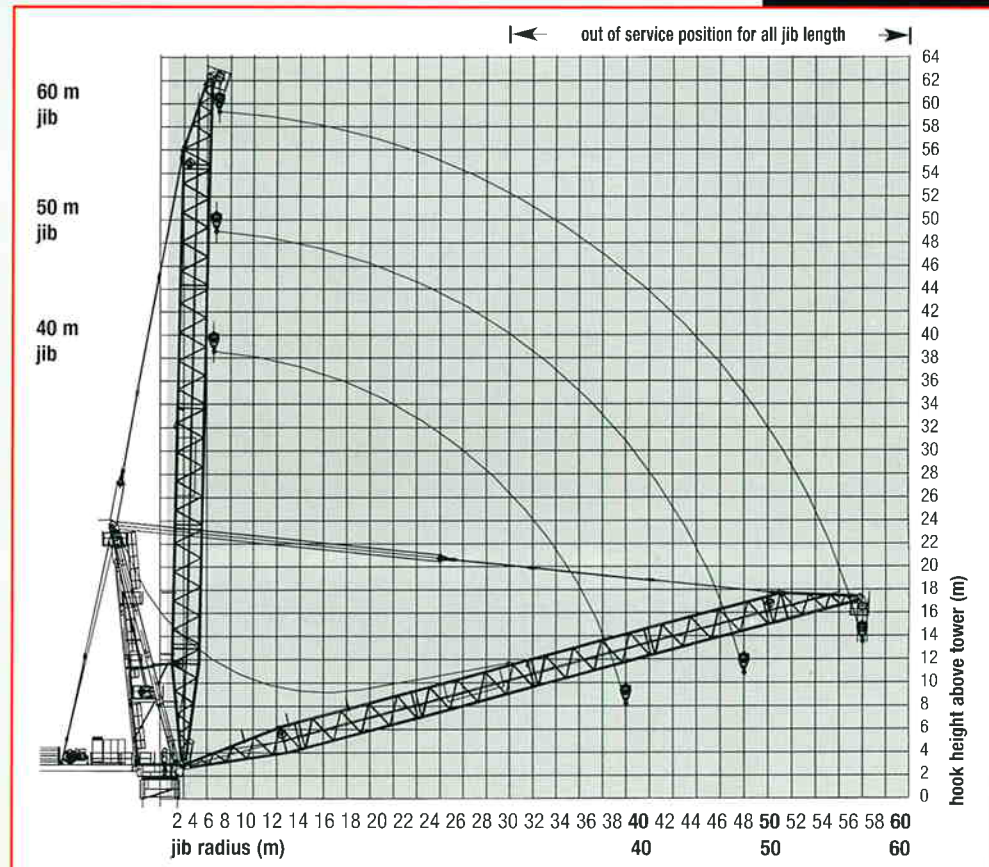
slewing part _____ 280 kVA

Shows character: WOLFF 60140 B


**BGL group 2124-0900
Top slewing tower crane with luffing jib**

Load data (t) · WOLFF 60140 B · 1-rope fall operation


jib radius (m)		 15,0 t	30	35	40	45	50	55	60	load capacity (t)	
jib length (m)	60		5,0 – 60,0	15,0	15,0	15,0	15,0	15,0	15,0		15,0
	50		4,5 – 50,0	15,0	15,0	15,0	15,0	15,0			
	40		4,0 – 40,0	15,0	15,0	15,0					



Load data (t) · WOLFF 60140 B · 2-rope falls operation





jib radius (m)			30	35	40	45	50	55	60	
jib length (m)	60	 30,0 t	30,0	30,0	27,8	23,2	19,5	16,5	14,0	load capacity (t)
	50		30,0	30,0	29,4	24,5	20,5			
	40		30,0	30,0	30,0					

Load data (t) · WOLFF 60140 B · 3-rope falls operation

jib radius (m)			30	35	40	45	50	55	60	
jib length (m)	60	 45,0 t	38,3	31,1	25,7	21,4	18,1	15,3	13,0	load capacity (t)
	50		41,1	33,4	27,6	23,1	19,5			
	40		43,0	35,0	29,0					

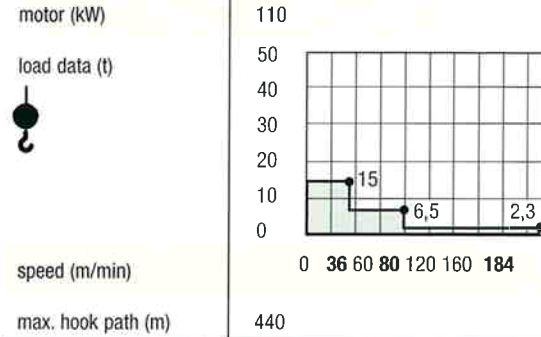
Load data refer to a tower height of 45,0 m. Larger tower heights reduce max. load capacity by weight of additional rope (1-rope fall operation = 5,17 kg per m hook path, 2-rope falls operation = 10,34 kg per m hook path, 3-rope falls operation = 15,51 kg per m hook path).

Working Speeds

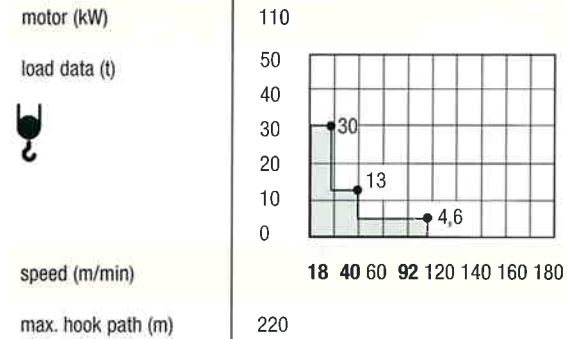
				
motor (kW)	110	2 x 12,5	8 x 5,5	15,0
speed	2,5 min	0,7 - 1 r.p.m.	30 m/min	0,5 m/min

Working Speeds – Hoist Unit · WOLFF 60140 B

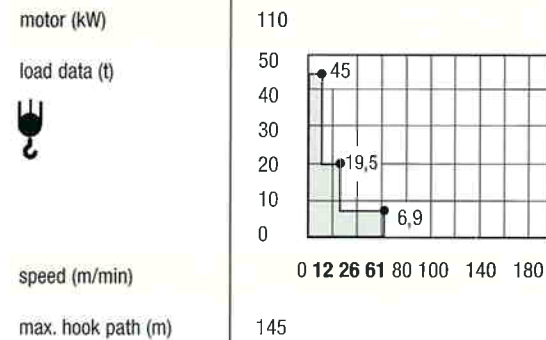
Hw 301103 · 1-rope fall operation



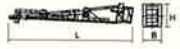










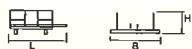






Hw 301103 · 2-rope falls operation



Hw 301103 · 3-rope falls operation



Colli List · WOLFF 60140 B

pos.	pce.	description	colli	L=length (m)	B=width (m)	H=height (m)	weight (kg)	volume (m³)
1	1	tower top compl. with luffing gear, various bracing parts		24,6	3,25	4,60	49550	367,8
		tower top upper part with platforms and diverse bracing parts		21,65	3,00	3,75	24700	243,6
		tower top upper part with platforms and diverse bracing parts and folded braces		21,65	3,00	3,06	24700	198,8
		tower top lower part with slewing drives and slip ring system		4,60	3,25	4,48	24850	67,0
		tower top lower part with unmounted slewing drive motors, deposited on the slewing scaffold		4,60	3,25	3,38	24850	50,5
2	1	driver's cabin with driver's cabin suspension		3,75	2,14	3,27	1200	26,3
3	1	counterjib, complete with bracing parts		8,62	3,0	3,02	15430	78,1
4	1	jib part 1 with bracing parts and assembly rope guidance		10,7	3,05	2,54	3820	82,9
5	3	jib part 2 with pins		10,6	2,48	2,48	2780	65,2
6	1	jib part 3 with pins and sign WOLFF		10,6	2,48	2,70	3020	71,0
7	1	jib part 4 with pins and assembly platform		8,7	2,48	3,61	4200	77,9
8	1	assembly platform for jib bracing		2,55	2,6	1,55	300	10,3
9	1	hook block 15 t (small parts)		0,97	0,45	0,45	600	0,2
10	1	hook block 30 t (small parts)		0,90	0,30	1,96	1200	0,53
11	1	hook block 45 t (small parts)		0,90	0,40	1,96	1800	0,71
12	1	jib bracings		8,33	0,21	0,25	980	0,44
13	1	standard handrail (loose parts)		2,55	1,1	1,8	460	5,05
14	1	box (small parts)		1,6	0,9	0,8	370	1,15

Loose parts and small parts can be distributed where empty space is available.

Proves strength and
condition:

WOLFF 60140 B

MAN WOLFFKRAN GmbH
 Austraße 72
 D-74076 Heilbronn
 Phone: +49 (0) 7131/9815-0
 Fax: +49 (0) 7131/9815-355
 E-mail: info@wolffkran.de
 Internet: www.wolffkran.de