

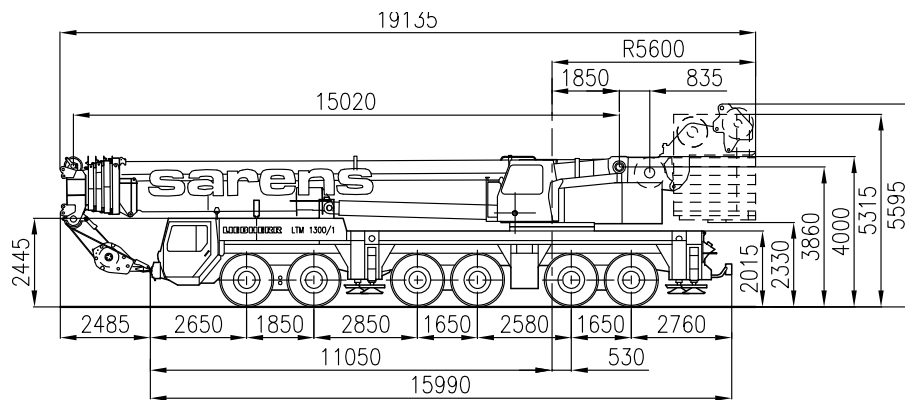


sarens
group

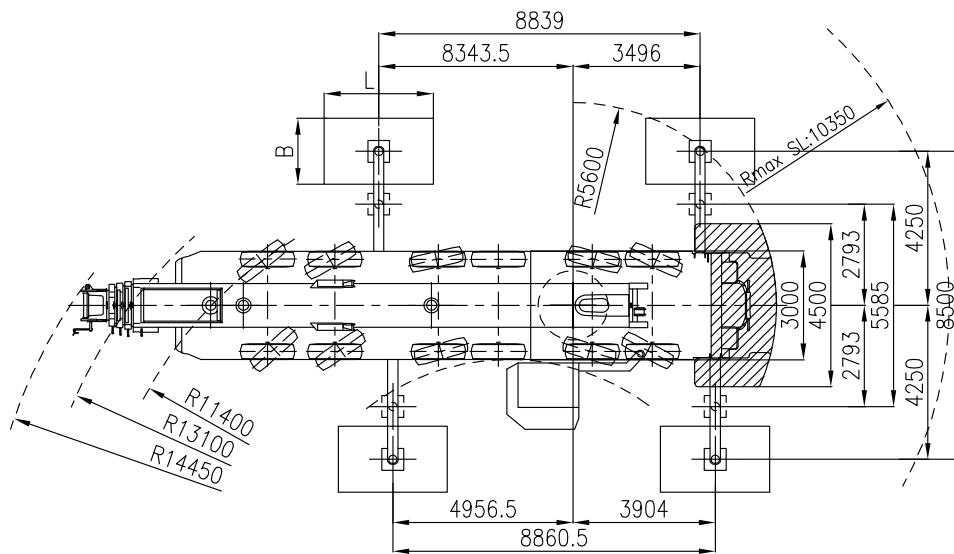
www.sarens.com

LIEBHERR LTM 1300/1

300 TON



K 0 422
L = 3000 mm
B = 1820 mm
K 4 071
L = 2500 mm
B = 2500 mm



Axle load / Charge par essieu / Achslast / Aslast	: 6 x 12 t	(= 0 t)
Total weight / Poids total / Gesamtgewicht / Totaal gewicht	: 72 t	(= 0 t)
Tyres / Pneus / Bereifung / Banden	: 14.00 R 25	
Counterweight-trailer / Remorque de contrepoids / Gegengewicht Anhänger / Ballastwagen	: 37.5 t	





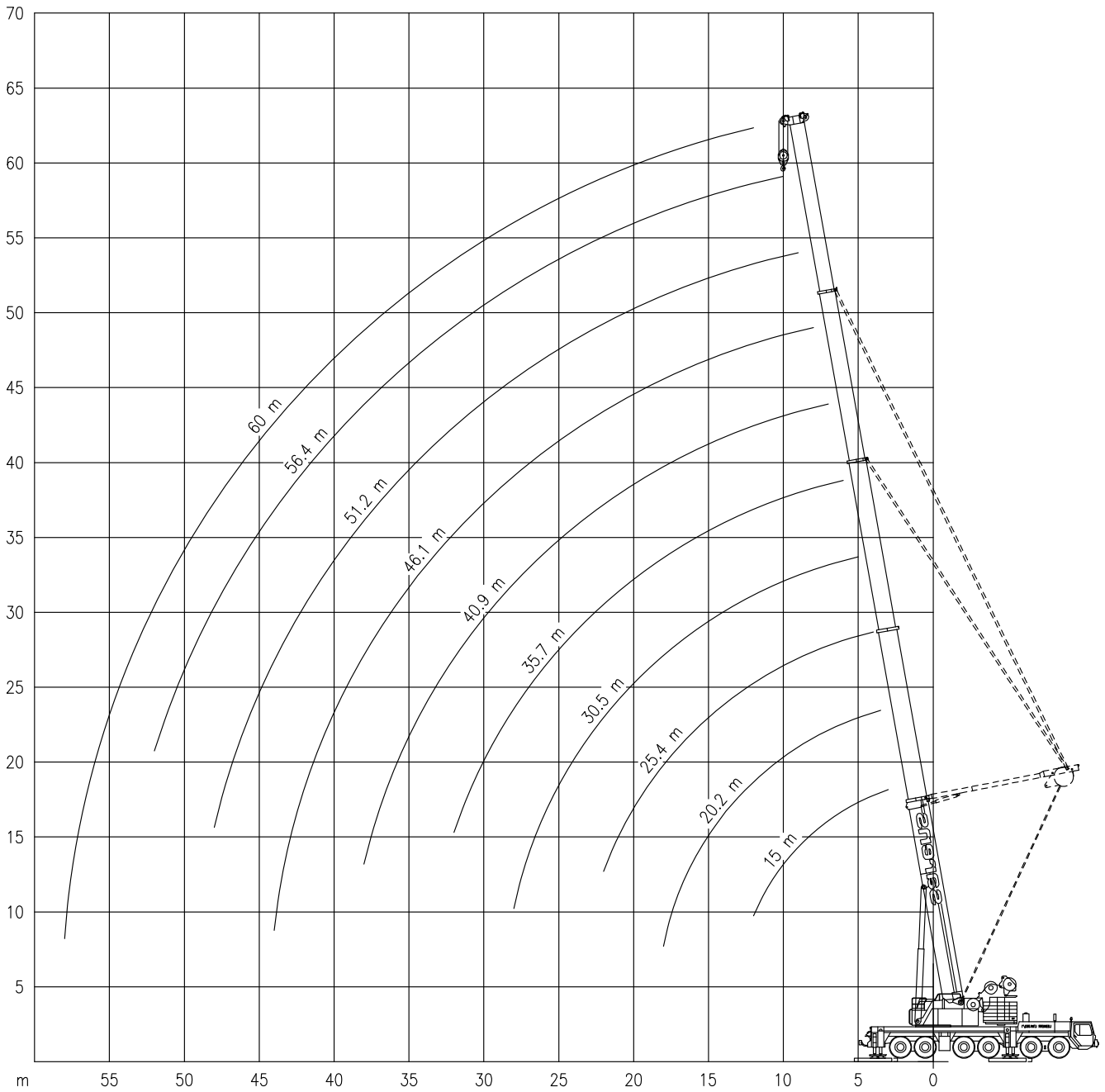
LIEBHERR LTM 1300/1

Working ranges
Portées

300 TON

Arbeitsbereiche
Werkbereich

T + TA



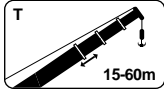


LIEBHERR LTM 1300/1

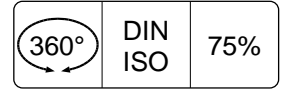
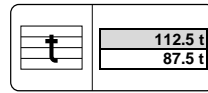
300 TON

Lifting capacities
Capacités

Tragfähigkeiten
Capaciteiten

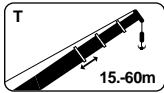


T

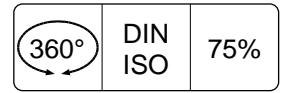
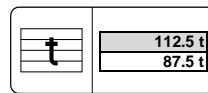


	15.0 m	15.0 m	20.2 m	25.4 m	30.5 m	35.7 m	40.9 m	46.1 m	51.2 m	56.4 m	60.0 m
3.0	300.0#	201.0	-	-	-	-	-	-	-	-	-
3.5	201.0#	185.0	152.0	-	-	-	-	-	-	-	-
4.0	188.0#	171.0	152.0	152.0	-	-	-	-	-	-	-
4.5	174.0#	159.0	152.0	152.0	-	-	-	-	-	-	-
5.0	161.0#	148.0	148.0	142.0	121.0	-	-	-	-	-	-
6.0	138.0#	129.0	129.0	128.0	111.0	90.0	-	-	-	-	-
7.0	119.0#	114.0	114.0	113.0	101.0	83.0	73.0	-	-	-	-
8.0	104.0#	102.0	102.0	101.0	93.0	77.0	68.0	58.0	-	-	-
9.0	92.0#	91.0	91.0	90.0	85.0	71.0	63.0	55.0	46.5	-	-
10.0	82.0#	82.0	82.0	81.0	79.0	67.0	60.0	52.0	44.5	37.0	-
12.0	67.0#	67.0	67.0	67.0	67.0	58.0	53.0	46.5	40.5	34.0	30.5
14.0	-	-	57.0	56.0	57.0	52.0	46.5	41.0	37.0	31.5	29.0
16.0	-	-	49.0	48.0	49.0	46.5	41.5	37.0	33.5	29.4	27.0
18.0	-	-	43.0	42.0	42.5	42.5	37.5	33.5	30.5	27.2	25.2
20.0	-	-	-	37.0	37.5	38.0	34.5	30.5	27.7	25.2	23.5
22.0	-	-	-	32.5	33.5	34.5	31.5	27.8	25.3	23.4	21.8
24.0	-	-	-	-	29.6	30.5	28.7	25.6	23.3	21.7	20.2
26.0	-	-	-	-	27.5	27.5	26.5	23.5	21.6	20.2	18.8
28.0	-	-	-	-	25.6	24.8	23.9	21.8	20.0	18.7	17.5
30.0	-	-	-	-	-	22.6	21.8	20.3	18.5	17.4	16.4
32.0	-	-	-	-	-	20.6	20.4	18.9	17.3	16.2	15.3
34.0	-	-	-	-	-	-	18.7	17.6	16.2	15.2	14.3
36.0	-	-	-	-	-	-	17.1	16.2	15.1	14.3	13.5
38.0	-	-	-	-	-	-	15.8	15.3	14.1	13.4	12.7
40.0	-	-	-	-	-	-	-	14.6	13.4	12.6	12.0
44.0	-	-	-	-	-	-	-	11.8	11.8	11.3	10.6
48.0	-	-	-	-	-	-	-	-	10.7	10.2	9.6
52.0	-	-	-	-	-	-	-	-	-	9.0	8.6
56.0	-	-	-	-	-	-	-	-	-	-	7.7
58.0	-	-	-	-	-	-	-	-	-	-	5.4

#Over rear / En arrière / Nach hinten / Over achterzijde



TA



	30.5 m	35.7 m	35.7 m	40.9 m	46.1 m	51.2 m	56.4 m	60.0 m
7.0	113.0*	93.0*	87.0**	76.0**	-	-	-	-
8.0	104.0*	90.0*	83.0**	74.0**	60.0**	-	-	-
9.0	95.0*	88.0*	79.0**	72.0**	59.0**	47.5**	-	-
10.0	87.0*	85.0*	76.0**	71.0**	57.0**	46.5**	38.5**	-
12.0	72.0*	72.0*	70.0**	67.0**	55.0**	45.0**	37.5**	31.0**
14.0	62.0*	61.0*	63.0**	63.0**	53.0**	43.5**	36.5**	31.0**
16.0	53.0*	53.0*	54.0**	55.0**	51.0**	42.0**	35.5**	30.5**
18.0	46.0*	46.0*	47.5**	47.5**	48.0**	40.5**	34.5**	30.0**
20.0	40.5*	40.0*	41.5**	42.0**	42.5**	39.0**	33.0**	29.2**
22.0	36.0*	35.5*	37.0**	37.5**	38.0**	37.5**	32.0**	28.3**
24.0	32.0*	31.5*	33.0**	33.5**	34.0**	34.0**	31.5**	27.6**
26.0	28.5*	28.0*	29.8**	30.0**	30.5**	31.5**	30.5**	26.9**
28.0	25.5*	25.1*	26.8**	27.0**	27.6**	28.5**	27.8**	26.1**
30.0	-	22.5*	24.3**	24.5**	25.0**	25.9**	25.2**	25.3**
32.0	-	20.3*	22.9**	22.2**	22.8**	23.7**	23.0**	23.0**
34.0	-	-	-	20.2**	20.8**	21.7**	21.0**	21.0**
36.0	-	-	-	18.5**	19.0**	19.9**	19.2**	19.3**
38.0	-	-	-	16.9**	17.5**	18.3**	17.7**	17.7**
40.0	-	-	-	-	16.5**	16.9**	16.2**	16.3**
44.0	-	-	-	-	11.1**	14.4**	13.8**	13.8**
48.0	-	-	-	-	-	12.3**	11.7**	11.7**
52.0	-	-	-	-	-	-	9.9**	9.9**
56.0	-	-	-	-	-	-	-	8.4**

*Main boom guyed at 2nd telescope / Flèche principale haubanée au 2^{ème} telescope / Haupausleger abgesehen am 2 Teleskop / Afspanning 2de telescoop

**3rd telescope / 3^{ème} telescope / 3 Teleskop / 3de telescoop.



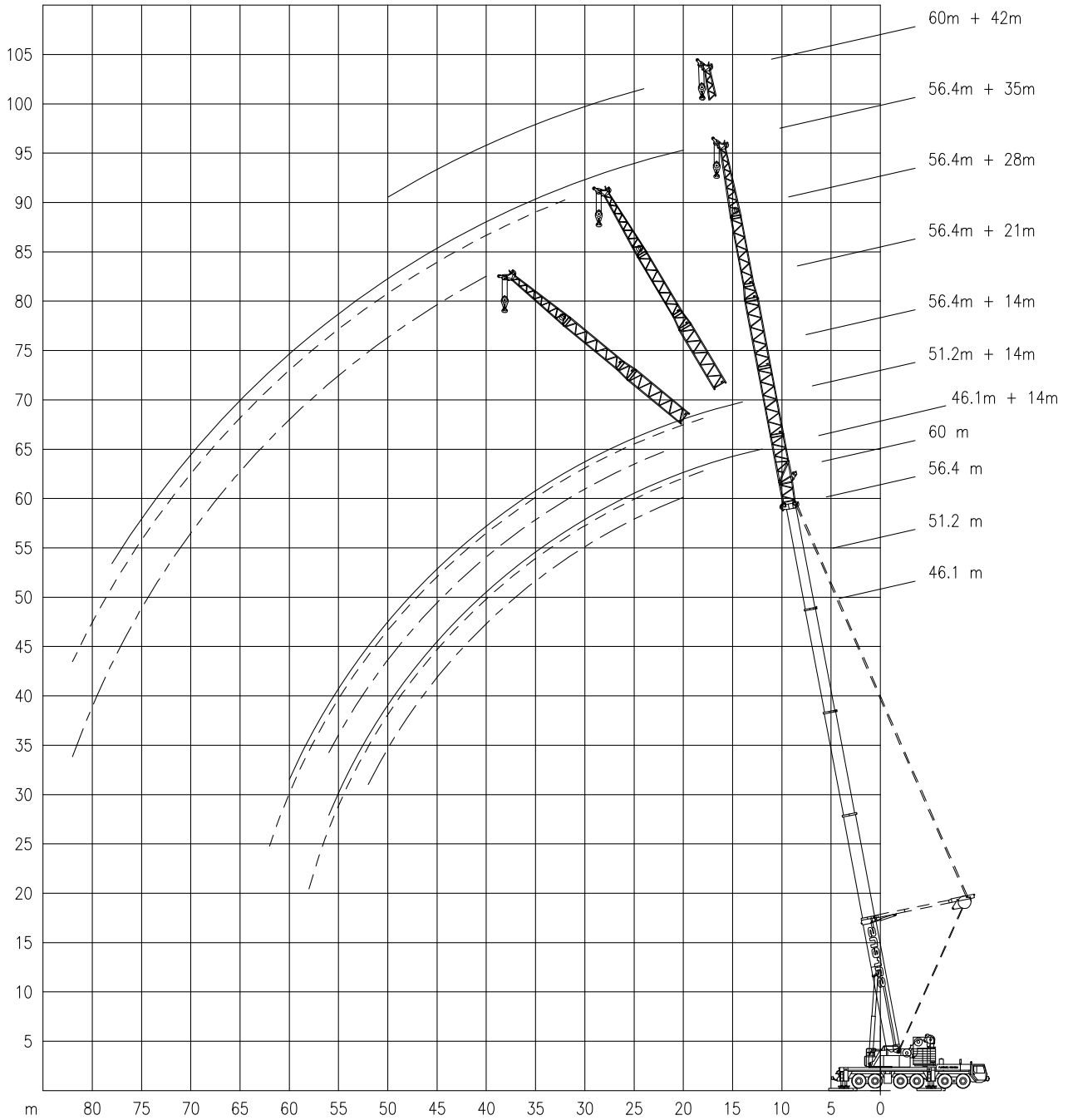
LIEBHERR LTM 1300/1

Working ranges
Portées

300 TON

Arbeitsbereiche
Werkbereich

TF + TAF



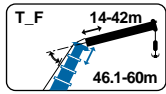


LIEBHERR LTM 1300/1

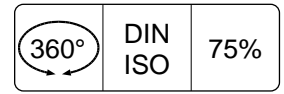
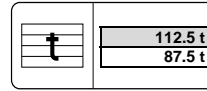
300 TON

Lifting capacities
Capacités

Tragfähigkeiten
Capaciteiten



TF



m	46.1 m + 2.5 m			51.2 m + 2.5 m			56.4 m + 2.5 m					
	14.0 m			14.0 m			14.0 m			21.0 m		
	0°	20°	40°	0°	20°	40°	0°	20°	40°	0°	20°	40°
	t	t	t	t	t	t	t	t	t	t	t	t
12.0	25.6	-	-	-	-	-	-	-	-	-	-	-
14.0	24.1	-	-	21.0	-	-	16.2	-	-	-	-	-
16.0	22.5	-	-	19.9	-	-	15.4	-	-	11.9	-	-
18.0	21.1	17.3	-	18.7	16.6	-	14.5	-	-	11.2	-	-
20.0	19.8	16.3	11.3	17.7	15.7	-	13.8	11.5	-	10.6	-	-
22.0	18.5	15.5	11.0	16.5	14.8	10.8	12.9	10.8	-	10.1	-	-
24.0	17.4	14.7	10.7	15.5	13.9	10.6	12.2	10.3	9.2	9.5	7.7	-
26.0	16.4	14.0	10.4	14.5	13.2	10.4	11.5	9.8	8.8	8.9	7.3	-
28.0	15.6	13.4	10.2	13.6	12.4	10.1	10.9	9.3	8.4	8.3	6.9	-
30.0	14.8	12.8	10.0	12.9	11.8	9.9	10.3	8.9	8.1	7.8	6.6	5.8
32.0	13.8	12.3	9.8	12.1	11.2	9.8	9.7	8.5	7.8	7.4	6.2	5.5
34.0	12.8	11.8	9.7	11.4	10.7	9.6	9.2	8.1	7.5	7.0	5.9	5.3
36.0	11.9	11.3	9.6	10.7	10.1	9.5	8.7	7.8	7.2	6.6	5.7	5.1
38.0	11.1	10.9	9.4	10.0	9.6	9.4	8.2	7.4	7.0	6.3	5.4	4.9
40.0	10.4	10.6	9.3	9.3	9.2	9.0	7.8	7.2	6.8	5.9	5.1	4.7
44.0	9.0	9.3	9.3	8.1	8.3	8.3	7.1	6.6	6.4	5.4	4.7	4.3
48.0	7.9	8.1	8.3	7.0	7.2	7.4	6.3	6.1	6.0	4.9	4.3	4.1
52.0	7.0	7.1	7.2	6.0	6.2	6.4	5.4	5.6	5.6	4.3	4.0	3.8
56.0	5.9	6.2	-	5.3	5.4	5.5	4.7	4.8	5.1	4.0	3.8	3.6
60.0	-	5.5	-	4.6	4.6	-	3.9	4.2	4.3	3.5	3.5	3.5
64.0	-	(58m)	-	-	4.2	-	3.5	3.6	-	3.0	3.3	3.3
68.0	-	-	-	-	(62m)	-	3.1	3.1	-	2.6	2.8	2.9
72.0	-	-	-	-	-	-	-	-	-	2.3	2.4	-

m	56.4 m + 2.5 m									60.0 m + 2.5 m		
	28.0 m			35.0 m			42.0 m			42.0 m		
	0°	20°	40°	0°	20°	40°	0°	20°	40°	0°	20°	40°
	t	t	t	t	t	t	t	t	t	t	t	t
18.0	9.0	-	-	-	-	-	-	-	-	-	-	-
20.0	8.5	-	-	6.7	-	-	-	-	-	-	-	-
22.0	8.0	-	-	6.3	-	-	4.9	-	-	-	-	-
24.0	7.5	-	-	5.9	-	-	4.5	-	-	4.0	-	-
26.0	7.1	-	-	5.5	-	-	4.1	-	-	3.9	-	-
28.0	6.6	5.3	-	5.1	-	-	3.8	-	-	3.6	-	-
30.0	6.2	5.0	-	4.7	-	-	3.5	-	-	3.4	-	-
32.0	5.8	4.7	-	4.4	3.4	-	3.3	-	-	3.2	-	-
34.0	5.5	4.4	3.6	4.1	3.3	-	3.1	-	-	3.0	-	-
36.0	5.1	4.2	3.5	3.8	3.1	-	2.9	-	-	2.8	-	-
38.0	4.8	4.0	3.5	3.6	2.9	-	2.8	-	-	2.7	-	-
40.0	4.6	3.8	3.4	3.4	2.8	2.2	2.6	-	-	2.5	-	-
44.0	4.1	3.4	3.2	3.0	2.5	2.1	2.3	-	-	2.2	-	-
48.0	3.7	3.2	3.0	2.7	2.3	2.0	2.0	-	-	2.0	-	-
52.0	3.3	3.0	2.8	2.5	2.1	1.9	-	-	-	1.9	-	-
56.0	3.1	2.7	2.6	2.2	1.9	1.8	-	-	-	(50m)	-	-
60.0	2.8	2.6	2.5	2.0	1.7	1.6	-	-	-	-	-	-
64.0	2.6	2.4	2.4	1.8	1.6	1.5	-	-	-	-	-	-
68.0	2.4	2.3	2.3	1.7	1.5	1.4	-	-	-	-	-	-
72.0	2.1	2.2	2.2	1.5	1.3	1.3	-	-	-	-	-	-
76.0	1.8	1.9	2.0	1.4	1.3	1.3	-	-	-	-	-	-
80.0	1.5	1.6	-	1.1	1.2	1.2	-	-	-	-	-	-
82.0	1.3	1.4	-	-	1.2	1.2	-	-	-	-	-	-

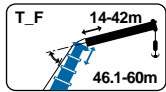


LIEBHERR LTM 1300/1

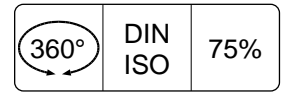
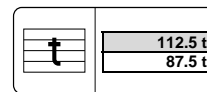
300 TON

Lifting capacities
Capacités

Tragfähigkeiten
Capaciteiten



TAF !*



m	46.1 m + 2.5 m			51.2 m + 2.5 m			56.4 m + 2.5 m						
	14.0 m			14.0 m			14.0 m			21.0 m			
	0°	20°	40°	0°	20°	40°	0°	20°	40°	0°	20°	40°	
t	t	t	t	t	t	t	t	t	t	t	t	t	
12.0	28.0	-	-	-	-	-	-	-	-	-	-	-	-
14.0	28.0	-	-	22.7	-	-	17.0	-	-	-	-	-	-
16.0	27.0	-	-	22.4	-	-	16.8	-	-	13.5	-	-	-
18.0	25.7	19.3	-	22.0	18.7	-	16.5	-	-	13.3	-	-	-
20.0	24.6	18.6	11.6	21.5	18.1	-	16.1	15.0	-	13.0	-	-	-
22.0	23.6	17.9	11.2	21.1	17.5	11.2	15.8	14.4	-	12.6	-	-	-
24.0	22.6	17.2	10.9	20.5	17.0	10.9	15.5	14.0	10.8	12.2	10.0	-	-
26.0	21.6	16.6	10.7	20.0	16.5	10.7	15.1	13.5	10.6	11.8	9.7	-	-
28.0	20.7	16.0	10.4	19.4	16.0	10.4	14.7	13.1	10.3	11.3	9.3	-	-
30.0	19.8	15.5	10.2	18.9	15.5	10.2	14.2	12.7	10.1	10.9	9.0	6.3	-
32.0	19.0	15.0	10.0	18.4	15.1	10.0	13.8	12.3	9.9	10.5	8.7	6.1	-
34.0	18.3	14.5	9.8	17.9	14.7	9.9	13.4	11.9	9.8	10.2	8.4	6.0	-
36.0	17.7	14.1	9.7	17.3	14.3	9.7	13.0	11.6	9.6	9.8	8.1	5.8	-
38.0	16.1	13.8	9.5	16.1	13.9	9.6	12.7	11.3	9.5	9.5	7.8	5.7	-
40.0	14.7	13.4	9.4	14.7	13.6	9.4	12.3	11.0	9.4	9.2	7.6	5.6	-
44.0	12.2	12.8	9.3	12.2	13.0	9.3	11.6	10.5	9.2	8.6	7.2	5.4	-
48.0	10.1	10.7	9.2	10.2	10.8	9.2	10.5	10.0	9.1	8.1	6.8	5.3	-
52.0	8.3	8.8	9.0	8.4	8.9	9.2	8.7	9.3	9.0	7.6	6.5	5.2	-
56.0	6.8	7.1	-	6.8	7.2	7.4	7.1	7.6	7.9	7.2	6.3	5.1	-
60.0	6.0	6.3	-	5.4	5.7	-	5.8	6.2	6.3	6.0	6.0	5.1	-
64.0	(58m)	(58m)	-	4.8	5.0	-	4.5	4.8	-	4.7	5.3	5.1	-
68.0	-	-	-	(62m)	(62m)	-	3.6	3.7	-	3.7	4.1	4.3	-
72.0	-	-	-	-	-	-	-	-	-	3.0	3.3	-	-

m	56.4 m + 2.5 m									60.0 m + 2.5 m		
	28.0 m			35.0 m			42.0 m			42.0 m	49.0 m	
	0°	20°	40°	0°	20°	40°	0°	20°	40°	0°	0°	
t	t	t	t	t	t	t	t	t	t	t	t	
18.0	10.3	-	-	-	-	-	-	-	-	-	-	-
20.0	10.2	-	-	8.2	-	-	-	-	-	-	-	-
22.0	10.0	-	-	8.0	-	-	6.0	-	-	-	-	-
24.0	9.7	-	-	7.8	-	-	6.0	-	4.0	5.0	-	-
26.0	9.4	-	-	7.5	-	-	5.8	-	4.0	5.0	3.3	-
28.0	9.0	7.2	-	7.1	-	-	5.6	-	3.9	4.9	3.3	-
30.0	8.8	6.9	-	6.9	-	-	5.3	-	3.7	4.7	3.3	-
32.0	8.5	6.7	-	6.6	-	-	5.0	-	3.6	4.5	3.2	-
34.0	8.2	6.5	3.8	6.3	4.5	-	4.8	-	3.4	4.3	3.0	-
36.0	7.9	6.3	3.7	6.1	4.4	-	4.6	-	3.3	4.1	2.9	-
38.0	7.6	6.1	3.6	5.8	4.2	-	4.3	2.9	3.1	3.9	2.8	-
40.0	7.3	5.9	3.5	5.6	4.1	2.2	4.1	2.8	3.0	3.8	2.7	-
44.0	6.8	5.5	3.4	5.2	3.8	2.1	3.8	2.6	2.7	3.4	2.4	-
48.0	6.4	5.2	3.3	4.7	3.5	2.0	3.5	2.4	2.4	3.2	2.2	-
52.0	6.0	4.9	3.1	4.4	3.3	1.9	3.2	2.2	2.2	2.9	2.0	-
56.0	5.6	4.6	3.1	4.1	3.1	1.9	3.0	2.1	2.0	2.7	1.8	-
60.0	5.3	4.5	3.0	3.8	2.9	1.8	2.8	1.9	1.8	2.5	-	-
64.0	5.1	4.3	3.0	3.6	2.8	1.8	2.6	1.8	1.6	2.3	-	-
68.0	4.0	4.1	3.0	3.4	2.7	1.7	2.4	1.7	1.5	2.2	-	-
72.0	3.3	3.8	3.0	3.2	2.6	1.7	2.2	1.6	1.3	2.0	-	-
76.0	2.7	3.0	3.0	2.7	2.5	1.7	2.1	1.5	-	1.9	-	-
80.0	2.1	2.3	-	2.1	2.4	1.7	2.0	1.4	-	1.7	-	-
84.0	-	-	-	1.6	2.0	1.7	1.6	1.4	-	1.4	-	-
88.0	-	-	-	1.1	1.4	-	1.2	1.3	-	-	-	-
92.0	-	-	-	-	-	-	-	1.1	-	-	-	-

* Main boom guyed at 4th telescope / Flèche principale haubanée au 4ième telescope / Hauptausleger abgespannt am 4 Teleskop / Afspanning 4de telescoop

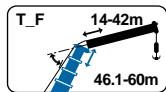


LIEBHERR LTM 1300/1

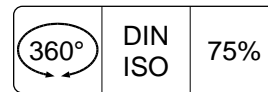
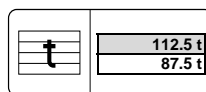
300 TON

Lifting capacities
Capacités

Tragfähigkeiten
Capaciteiten



TAF !*



m	46.1 m + 2.5 m			51.2 m + 2.5 m			56.4 m + 2.5 m					
	14.0 m			14.0 m			14.0 m			21.0 m		
	0°	20°	40°	0°	20°	40°	0°	20°	40°	0°	20°	40°
t	t	t	t	t	t	t	t	t	t	t	t	t
12.0	28.0	-	-	-	-	-	-	-	-	-	-	-
14.0	28.0	-	-	22.7	-	-	17.0	-	-	-	-	-
16.0	27.0	-	-	22.4	-	-	16.8	-	-	13.5	-	-
18.0	25.7	19.3	-	22.0	18.7	-	16.5	-	-	13.3	-	-
20.0	24.6	18.6	11.6	21.5	18.1	-	16.1	15.0	-	13.0	-	-
22.0	23.6	17.9	11.2	21.1	17.5	11.2	15.8	14.4	-	12.6	-	-
24.0	22.6	17.2	10.9	20.5	17.0	10.9	15.5	14.0	10.8	12.2	10.0	-
26.0	21.6	16.6	10.7	20.0	16.5	10.7	15.1	13.5	10.6	11.8	9.7	-
28.0	20.7	16.0	10.4	19.4	16.0	10.4	14.7	13.1	10.3	11.3	9.3	-
30.0	19.8	15.5	10.2	18.9	15.5	10.2	14.2	12.7	10.1	10.9	9.0	6.3
32.0	18.6	15.0	10.0	18.4	15.1	10.0	13.8	12.3	9.9	10.5	8.7	6.1
34.0	16.7	14.5	9.8	16.7	14.7	9.9	13.4	11.9	9.8	10.2	8.4	6.0
36.0	15.1	14.1	9.7	15.1	14.3	9.7	13.0	11.6	9.6	9.8	8.1	5.8
38.0	13.6	13.8	9.5	13.6	13.9	9.6	12.7	11.3	9.5	9.5	7.8	5.7
40.0	12.2	13.1	9.4	12.3	13.2	9.4	12.3	11.0	9.4	9.2	7.6	5.6
44.0	9.9	10.6	9.3	9.9	10.7	9.3	10.3	10.5	9.2	8.6	7.2	5.4
48.0	7.9	8.6	8.9	8.0	8.7	9.1	8.3	9.0	9.1	8.1	6.8	5.3
52.0	6.3	6.7	6.9	6.3	6.9	7.2	6.6	7.3	7.6	6.8	6.5	5.2
56.0	4.8	5.1	-	4.8	5.3	5.5	5.2	5.7	6.0	5.3	6.2	5.1
60.0	-	4.3	-	3.7	3.9	-	3.9	4.2	4.4	4.0	4.8	5.1
64.0	-	(58m)	-	-	-	-	3.1	3.3	-	3.2	3.7	3.9
68.0	-	-	-	-	-	-	2.4	2.5	-	2.5	2.9	3.0
72.0	-	-	-	-	-	-	-	-	-	1.9	2.2	-

m	56.4 m + 2.5 m									60.0 m + 2.5 m	
	28.0 m			35.0 m			42.0 m		49.0 m	42.0 m	49.0 m
	0°	20°	40°	0°	20°	40°	0°	20°	0°	0°	0°
t	t	t	t	t	t	t	t	t	t	t	t
18.0	10.3	-	-	-	-	-	-	-	-	-	-
20.0	10.2	-	-	8.2	-	-	-	-	-	-	-
22.0	10.0	-	-	8.0	-	-	6.0	-	-	-	-
24.0	9.7	-	-	7.8	-	-	6.0	-	4.0	5.0	-
26.0	9.4	-	-	7.5	-	-	5.8	-	4.0	5.0	3.3
28.0	9.0	7.2	-	7.1	-	-	5.6	-	3.9	4.9	3.3
30.0	8.8	6.9	-	6.9	-	-	5.3	-	3.7	4.7	3.3
32.0	8.5	6.7	-	6.6	-	-	5.0	-	3.6	4.5	3.2
34.0	8.2	6.5	3.8	6.3	4.5	-	4.8	-	3.4	4.3	3.0
36.0	7.9	6.3	3.7	6.1	4.4	-	4.6	-	3.3	4.1	2.9
38.0	7.6	6.1	3.6	5.8	4.2	-	4.3	2.9	3.1	3.9	2.8
40.0	7.3	5.9	3.5	5.6	4.1	2.2	4.1	2.8	3.0	3.8	2.7
44.0	6.8	5.5	3.4	5.2	3.8	2.1	3.8	2.6	2.7	3.4	2.4
48.0	6.4	5.2	3.3	4.7	3.5	2.0	3.5	2.4	2.4	3.2	2.2
52.0	6.0	4.9	3.1	4.4	3.3	1.9	3.2	2.2	2.2	2.9	2.0
56.0	5.6	4.6	3.1	4.1	3.1	1.9	3.0	2.1	2.0	2.7	1.8
60.0	4.4	4.5	3.0	3.8	2.9	1.8	2.8	1.9	1.8	2.5	-
64.0	3.5	4.2	3.0	3.5	2.8	1.8	2.6	1.8	1.6	2.3	-
68.0	2.8	3.4	3.0	2.8	2.7	1.7	2.4	1.7	1.5	2.2	-
72.0	2.1	2.6	2.9	2.1	2.6	1.7	2.2	1.6	1.3	2.0	-
76.0	1.6	1.9	2.1	1.6	2.2	1.7	1.6	1.5	-	1.4	-
80.0	1.1	1.3	-	-	1.6	1.7	-	1.4	-	-	-
84.0	-	-	-	-	-	1.1	-	1.2	-	-	-

!* Main boom guyed at 4th telescope / Flèche principale haubanée au 4ième telescope / Haupausleger abgESPANNT am 4 Teleskop / Afspanning 4de telescoop



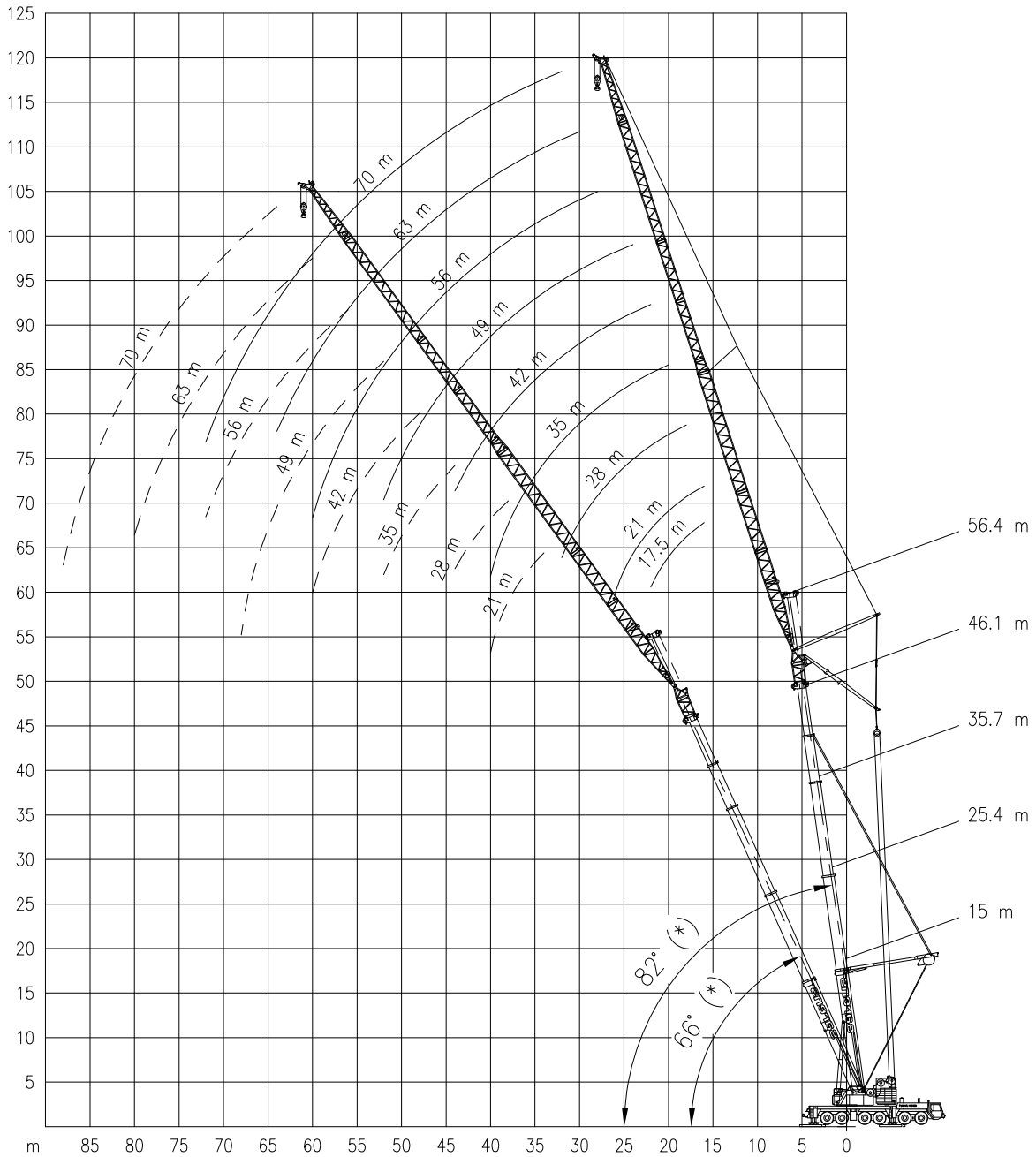
LIEBHERR LTM 1300/1

Working ranges
Portées

300 TON

Arbeitsbereiche
Werkbereich

TN + TAN



* Duty charts 74' on request / Charges 74' sur demande / Tragfähigkeiten 74' auf Anfrage / Lasttabellen 74' op aanvraag

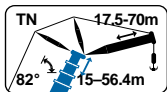


LIEBHERR LTM 1300/1

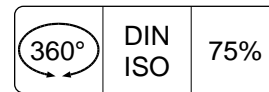
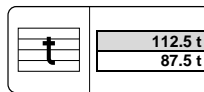
300 TON

Lifting capacities
Capacités

Tragfähigkeiten
Capacités



TN 82°



m	15.0 m + 4 m									25.4 m + 4 m								
	17.5 m	21.0 m	28.0 m	35.0 m	42.0 m	49.0 m	56.0 m	63.0 m	70.0 m	17.5 m	21.0 m	28.0 m	35.0 m	42.0 m	49.0 m	56.0 m	63.0 m	70.0 m
9.0	70.0	-	-	-	-	-	-	-	-	-	-	-	-	-	-	-	-	-
10.0	67.0	63.0	-	-	-	-	-	-	-	55.0	-	-	-	-	-	-	-	-
12.0	61.0	58.0	48.5	-	-	-	-	-	-	55.0	46.0	-	-	-	-	-	-	-
14.0	57.0	53.0	47.0	38.0	-	-	-	-	-	55.0	46.0	36.5	-	-	-	-	-	-
16.0	55.0	50.0	44.5	37.0	29.8	-	-	-	-	54.0	46.0	36.5	28.0	-	-	-	-	-
18.0	45.5	47.5	42.5	36.0	29.1	-	-	-	-	50.0	46.0	36.0	28.0	22.0	-	-	-	-
20.0	-	44.0	40.5	34.5	28.6	22.6	-	-	-	45.5	45.0	35.0	28.0	22.0	16.9	-	-	-
22.0	-	34.0	38.0	33.5	27.9	22.6	17.3	-	-	-	42.0	34.0	27.6	22.0	16.9	12.8	-	-
24.0	-	-	34.5	32.0	27.2	22.2	17.3	13.0	-	-	-	33.5	27.0	21.8	16.9	12.8	-	-
26.0	-	-	30.5	30.5	26.6	21.6	17.3	13.0	9.8	-	-	33.0	26.3	21.4	16.9	12.8	10.0	-
28.0	-	-	24.6	28.2	25.8	20.9	17.1	13.0	9.5	-	-	30.5	25.7	21.0	16.9	12.8	10.0	7.3
30.0	-	-	-	26.1	24.9	20.3	16.7	13.0	9.3	-	-	25.2	25.2	20.5	16.8	12.8	10.0	7.3
32.0	-	-	-	23.7	23.2	19.7	16.2	12.8	9.0	-	-	-	24.7	20.0	16.4	12.8	10.0	7.3
34.0	-	-	-	19.6	21.6	19.1	15.7	12.6	8.8	-	-	-	24.2	19.5	15.9	12.8	10.0	7.3
36.0	-	-	-	-	20.2	18.6	15.2	12.3	8.5	-	-	-	20.3	19.0	15.5	12.6	10.0	7.3
38.0	-	-	-	-	19.1	18.0	14.8	12.0	8.3	-	-	-	-	18.6	15.1	12.3	10.0	7.2
40.0	-	-	-	-	16.7	16.8	14.4	11.7	8.1	-	-	-	-	18.2	14.8	12.0	9.8	7.0
44.0	-	-	-	-	-	15.1	13.6	11.0	7.7	-	-	-	-	-	14.2	11.4	9.3	6.7
48.0	-	-	-	-	-	11.8	12.6	10.5	7.4	-	-	-	-	-	13.7	10.9	8.9	6.5
52.0	-	-	-	-	-	-	11.5	10.3	7.2	-	-	-	-	-	-	10.7	8.6	6.4
56.0	-	-	-	-	-	-	-	9.8	7.1	-	-	-	-	-	-	10.5	8.5	6.3
60.0	-	-	-	-	-	-	-	8.6	6.5	-	-	-	-	-	-	-	8.4	6.2
64.0	-	-	-	-	-	-	-	-	6.0	-	-	-	-	-	-	-	7.2	5.9
68.0	-	-	-	-	-	-	-	-	5.5	-	-	-	-	-	-	-	-	5.5
70.0	-	-	-	-	-	-	-	-	-	-	-	-	-	-	-	-	-	5.3

35.7 m + 4 m									
m	t	t	t	t	t	t	t	t	t
12.0	38.0	-	-	-	-	-	-	-	-
14.0	38.0	32.5	-	-	-	-	-	-	-
16.0	38.0	32.5	25.4	-	-	-	-	-	-
18.0	36.5	32.5	25.4	19.9	-	-	-	-	-
20.0	35.0	32.5	25.4	19.9	15.5	-	-	-	-
22.0	-	31.5	25.4	19.9	15.5	11.7	-	-	-
24.0	-	30.5	25.1	19.9	15.5	11.7	-	-	-
26.0	-	-	24.7	19.9	15.5	11.7	9.1	-	-
28.0	-	-	24.4	19.6	15.5	11.7	9.1	6.6	-
30.0	-	-	24.3	19.3	15.5	11.7	9.1	6.6	4.7
32.0	-	-	-	19.1	15.5	11.7	9.1	6.6	4.7
34.0	-	-	-	18.8	15.3	11.7	9.1	6.6	4.7
36.0	-	-	-	18.6	15.0	11.7	9.1	6.6	4.7
38.0	-	-	-	18.4	14.8	11.7	9.1	6.6	4.7
40.0	-	-	-	-	14.5	11.6	9.1	6.6	4.7
44.0	-	-	-	-	14.2	11.2	9.0	6.6	4.7
48.0	-	-	-	-	-	10.8	8.6	6.6	4.7
52.0	-	-	-	-	-	10.8	8.4	6.6	4.7
56.0	-	-	-	-	-	-	8.4	6.5	4.7
60.0	-	-	-	-	-	-	-	6.5	4.7
64.0	-	-	-	-	-	-	-	6.5	4.7
68.0	-	-	-	-	-	-	-	-	4.7
72.0	-	-	-	-	-	-	-	-	4.7

*Duty charts 74°-66° on request / Charges 74°-66° sur demande / Tragfähigkeiten 74°-66° auf anfrage / Lasttabellen 74°-66° op aanvraag.

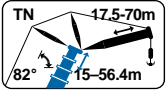


LIEBHERR LTM 1300/1

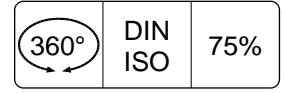
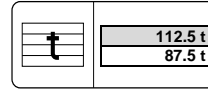
300 TON

Lifting capacities
Capacités

Tragfähigkeiten
Capaciteiten



TN 82°



m	46.1 m + 4 m									56.4 m + 4 m								
	17.5 m	21.0 m	28.0 m	35.0 m	42.0 m	49.0 m	56.0 m	63.0 m	70.0 m	17.5 m	21.0 m	28.0 m	35.0 m	42.0 m	49.0 m	56.0 m	63.0 m	70.0 m
t	t	t	t	t	t	t	t	t	t	t	t	t	t	t	t	t	t	t
16.0	22.8	19.5	-	-	-	-	-	-	-	-	-	-	-	-	-	-	-	-
18.0	22.8	19.5	14.7	-	-	-	-	-	-	13.7	11.8	-	-	-	-	-	-	-
20.0	22.8	19.5	14.7	11.0	-	-	-	-	-	13.7	11.8	8.5	-	-	-	-	-	-
22.0	22.8	19.5	14.7	11.0	8.3	-	-	-	-	13.7	11.8	8.5	6.2	-	-	-	-	-
24.0	-	19.5	14.7	11.0	8.3	6.0	-	-	-	13.5	11.8	8.5	6.2	-	-	-	-	-
26.0	-	19.5	14.7	11.0	8.3	6.0	-	-	-	-	11.8	8.5	6.2	4.4	-	-	-	-
28.0	-	-	14.7	11.0	8.3	6.0	4.2	-	-	-	11.6	8.5	6.2	4.4	3.0	-	-	-
30.0	-	-	14.7	11.0	8.3	6.0	4.2	2.8	-	-	-	8.5	6.2	4.4	3.0	1.8	-	-
32.0	-	-	14.7	11.0	8.3	6.0	4.2	2.8	1.7	-	-	8.5	6.2	4.4	3.0	1.8	-	-
34.0	-	-	-	11.0	8.3	6.0	4.2	2.8	1.7	-	-	8.5	6.2	4.4	3.0	1.8	-	-
36.0	-	-	-	11.0	8.3	6.0	4.2	2.8	1.7	-	-	-	6.2	4.4	3.0	1.8	-	-
38.0	-	-	-	11.0	8.3	6.0	4.2	2.8	1.7	-	-	-	6.2	4.4	3.0	1.8	-	-
40.0	-	-	-	11.0	8.3	6.0	4.2	2.8	1.7	-	-	-	6.2	4.4	3.0	1.8	-	-
44.0	-	-	-	-	8.3	6.0	4.2	2.8	1.7	-	-	-	-	4.4	3.0	1.8	-	-
48.0	-	-	-	-	-	6.0	4.2	2.8	1.7	-	-	-	-	4.4	3.0	1.8	-	-
52.0	-	-	-	-	-	6.0	4.2	2.8	1.7	-	-	-	-	-	3.0	1.8	-	-
56.0	-	-	-	-	-	-	4.2	2.8	1.7	-	-	-	-	-	-	1.8	-	-
60.0	-	-	-	-	-	-	4.2	2.8	1.7	-	-	-	-	-	-	1.8	-	-
64.0	-	-	-	-	-	-	-	2.8	1.7	-	-	-	-	-	-	-	-	-
68.0	-	-	-	-	-	-	-	-	1.7	-	-	-	-	-	-	-	-	-
72.0	-	-	-	-	-	-	-	-	1.7	-	-	-	-	-	-	-	-	-

*Duty charts 74°-66° on request / Charges 74°-66° sur demande / Tragfähigkeiten 74°-66° auf anfrage / Lasttabellen 74°-66° op aanvraag.

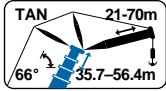


LIEBHERR LTM 1300/1

300 TON

Lifting capacities
Capacités

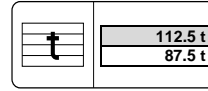
Tragfähigkeiten
Capacités



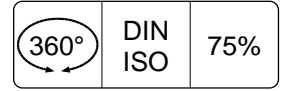
TAN 66° !*



8.5m



112.5 t
87.5 t



360°

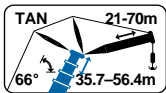
DIN
ISO

75%



35.7 m + 4 m

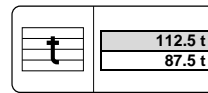
	17.5 m	21.0 m	28.0 m	35.0 m	42.0 m	49.0 m	56.0 m	63.0 m	70.0 m	17.5 m	21.0 m	28.0 m	35.0 m	42.0 m	49.0 m	56.0 m	63.0 m	70.0 m	
m	t	t	t	t	t	t	t	t	t	t	t	t	t	t	t	t	t	t	
30.0	-	24.0	-	-	-	-	-	-	-	-	-	-	-	-	-	-	-	-	-
32.0	-	22.3	-	-	-	-	-	-	-	-	-	-	-	-	-	-	-	-	-
34.0	-	20.8	20.1	-	-	-	-	-	-	-	-	-	-	-	-	-	-	-	-
36.0	-	19.5	18.8	-	-	-	-	-	-	-	-	-	-	-	-	-	-	-	-
38.0	-	-	17.6	17.2	-	-	-	-	-	-	-	-	-	-	-	-	-	-	-
40.0	-	-	16.6	16.1	-	-	-	-	-	-	-	-	-	-	-	-	-	-	-
44.0	-	-	-	14.3	13.7	-	-	-	-	-	-	-	-	-	-	-	-	-	-
48.0	-	-	-	12.8	12.2	10.7	-	-	-	-	-	-	-	-	-	-	-	-	-
52.0	-	-	-	-	11.0	10.5	8.2	-	-	-	-	-	-	-	-	-	-	-	-
56.0	-	-	-	-	9.9	9.4	8.2	6.0	-	-	-	-	-	-	-	-	-	-	-
60.0	-	-	-	-	-	8.5	7.9	6.0	4.2	-	-	-	-	-	-	-	-	-	-
64.0	-	-	-	-	-	7.7	7.1	6.0	4.2	-	-	-	-	-	-	-	-	-	-
68.0	-	-	-	-	-	-	6.4	5.8	4.2	-	-	-	-	-	-	-	-	-	-
72.0	-	-	-	-	-	-	-	5.1	4.2	-	-	-	-	-	-	-	-	-	-
76.0	-	-	-	-	-	-	-	4.5	3.9	-	-	-	-	-	-	-	-	-	-
80.0	-	-	-	-	-	-	-	-	3.6	-	-	-	-	-	-	-	-	-	-
84.0	-	-	-	-	-	-	-	-	3.3	-	-	-	-	-	-	-	-	-	-



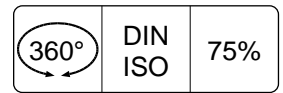
TAN 66° !**



8.5m



112.5 t
87.5 t



360°

DIN
ISO

75%



46.1 m + 4 m

56.4 m + 4 m

	17.5 m	21.0 m	28.0 m	35.0 m	42.0 m	49.0 m	56.0 m	63.0 m	70.0 m	17.5 m	21.0 m	28.0 m	35.0 m	42.0 m	49.0 m	56.0m	63.0m	70.0 m	
m	t	t	t	t	t	t	t	t	t	t	t	t	t	t	t	t	t	t	
34.0	-	16.2	-	-	-	-	-	-	-	-	-	-	-	-	-	-	-	-	-
36.0	-	16.2	-	-	-	-	-	-	-	-	-	-	-	-	-	-	-	-	-
38.0	-	16.2	12.7	-	-	-	-	-	-	-	-	-	-	-	-	-	-	-	-
40.0	-	15.4	12.7	-	-	-	-	-	-	-	8.8	-	-	-	-	-	-	-	-
44.0	-	-	12.6	9.9	-	-	-	-	-	-	8.7	6.7	-	-	-	-	-	-	-
48.0	-	-	-	9.9	7.6	-	-	-	-	-	-	6.6	4.9	-	-	-	-	-	-
52.0	-	-	-	9.9	7.6	5.7	-	-	-	-	-	-	4.9	3.5	-	-	-	-	-
56.0	-	-	-	-	7.6	5.7	3.9	-	-	-	-	-	4.9	3.5	-	-	-	-	-
60.0	-	-	-	-	7.5	5.7	3.9	2.6	-	-	-	-	-	3.5	2.5	-	-	-	-
64.0	-	-	-	-	-	5.7	3.9	2.6	1.5	-	-	-	-	3.5	2.5	1.5	-	-	-
68.0	-	-	-	-	-	5.6	3.9	2.6	1.5	-	-	-	-	-	2.5	1.5	-	-	-
72.0	-	-	-	-	-	-	3.9	2.6	1.5	-	-	-	-	-	2.5	1.5	-	-	-
76.0	-	-	-	-	-	-	-	2.6	1.5	-	-	-	-	-	-	1.5	-	-	-
80.0	-	-	-	-	-	-	-	2.6	1.5	-	-	-	-	-	-	1.5	-	-	-
84.0	-	-	-	-	-	-	-	-	1.5	-	-	-	-	-	-	(78m)	-	-	-
88.0	-	-	-	-	-	-	-	-	1.5	-	-	-	-	-	-	-	-	-	-

!* Main boom guyed at 2nd telescope / Flèche principale haubanée au 2ième telescope / Haupausleger abgespannt am 2 Teleskop / Afspanning 2de telescoop

!** Main boom guyed at 3th telescope / Flèche principale haubanée au 3ième telescope / Haupausleger abgespannt am 3 Teleskop / Afspanning 3de telescoop

*Duty charts 82°-74° on request / Charges 82°-74° sur demande / Tragfähigkeiten 82°-74° auf anfrage / Lasttabellen 82°-74° op aanvraag.



LIEBHERR LTM 1300/1

300 TON

Working speeds
Vitesses de travail

Arbeitsgeschwindigkeiten
Werksnelheden

Mechanisms Mécanismes Antriebe Aandrijvingen	Speeds Vitesses Geschwindigkeiten Snelheden	Rope diameter Diamètre du câble Seildurchmesser Kabeldiameter	Single line pull Effort sur brin simple Zulässiger Seilzug je strang Toegelaten trekkracht / part	Length of ropes Longueur des cables Länge der Seile Kabellengte
Main hoist Levage sur flèche Hubwerk 1 Hijlslier 1	0 – 130 m/min	23 mm	105 kN	450 m
Auxiliary hoist 2 Levage sur flèche 2 Hubwerk 2 Hijlslier 2	0 – 130 m/min	23 mm	105 kN	450 m
Auxiliary hoist 3 Levage sur flèche 3 Hubwerk 3 Hijlslier 3	0 – 130 m/min	23 mm	105 kN	640 m
Slewing gear Orientation Drehwerk Zwenkwerk	0 – 1.5 RPM			
Travel speed Vitesse sur route Fahrgeschwindigkeit Rijsnelheid	0 – 40/70 km/h			
Booming up Relever la flèche 82° Aufwippen Optoppen	70 sec			
Telescope Téléscoper 15.5 - Teleskopieren 60 Telescoperen m	500 sec			

Hook Block / Crane hook Crochet mouflé / Crochet simple



Unterflasche / Hakengehänge Kraanblok / Kraanhaak

Capacity Capacité Tragfähigkeit Capaciteit	Number of sheaves Nombre de poulies Anzahl der Rollen Aantal schijven	Number of lines Nombre de brins Strangzahl Aantal parten	Weight Poids Gewicht Gewicht	"B"
SWL 108 t	5	10	1450 kg	3.0 m
SWL 71 t	3	6	1000 kg	3.0 m
SWL 32 t	1	3	840 kg	2.7 m