



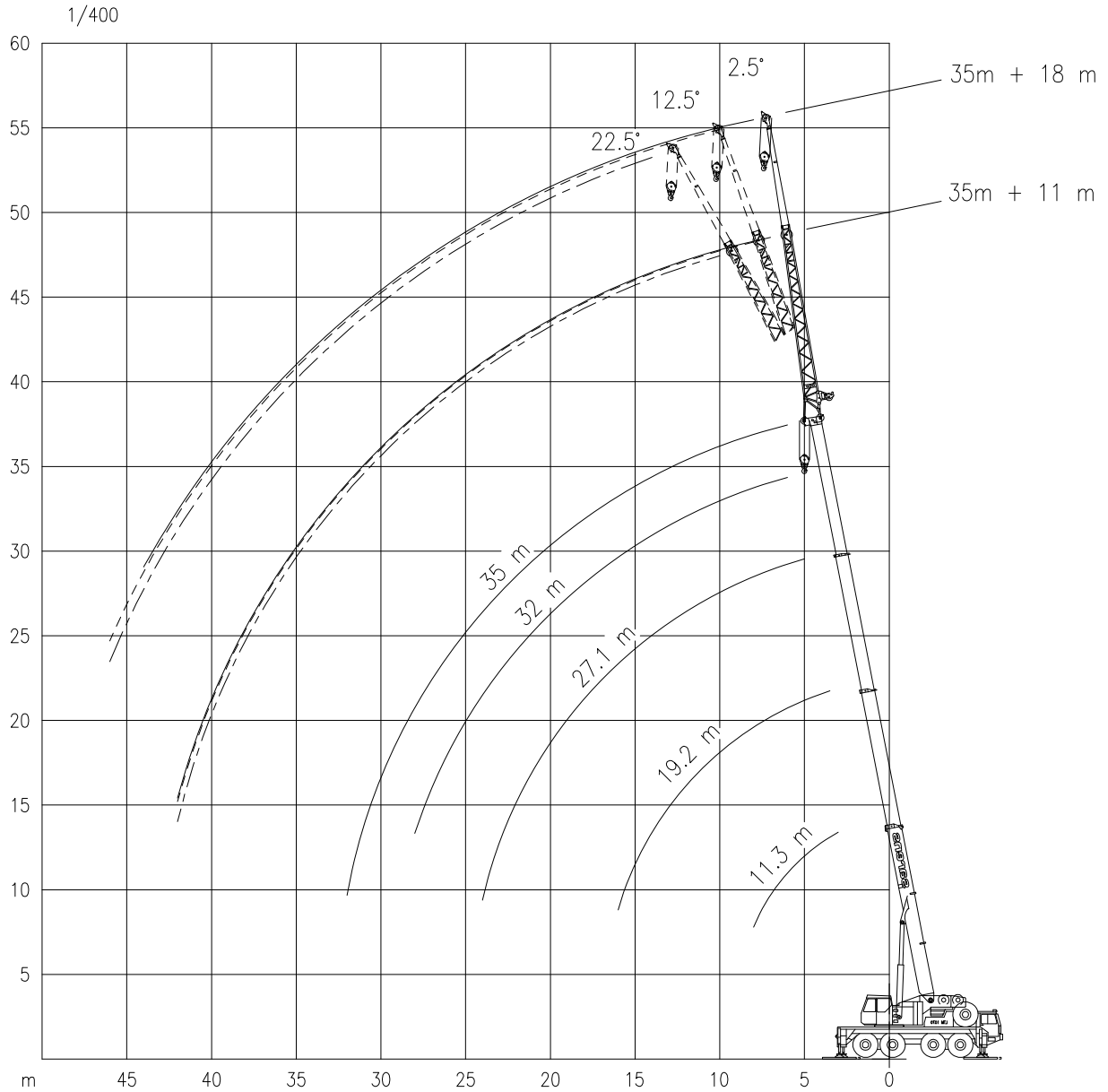
LIEBHERR 1070 (35 M)

Working ranges
Portées

70 TON

Arbeitsbereiche
Werkbereich

T / TK



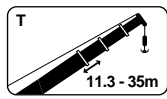


LIEBHERR 1070 (35 M)

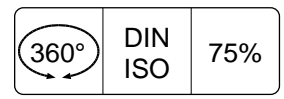
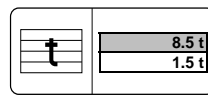
70 TON

Lifting capacities
Capacités

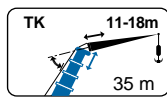
Tragfähigkeiten
Capaciteiten



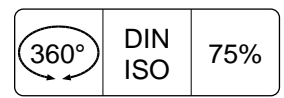
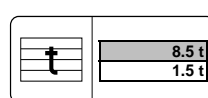
T



m	11.3 m		11.3 m		19.2 m		27.1 m		32.0 m		35.0 m	
	t	t	t	t	t	t	t	t	t	t	t	t
3.0	70.0*	60.0*	60.0	60.0	-	-	-	-	-	-	-	-
3.5	54.0*	54.0*	54.0	54.0	36.0	36.0	-	-	-	-	-	-
4.0	49.0*	49.0*	49.0	49.0	34.2	34.2	-	-	-	-	-	-
4.5	45.0*	45.0*	45.0	45.0	32.2	32.2	-	-	-	-	-	-
5.0	41.0*	41.0*	41.0	41.0	30.2	30.2	20.0	20.0	-	-	-	-
6.0	36.0*	34.6*	36.0	33.9	26.8	26.7	19.3	19.3	15.0	15.0	13.0	13.0
7.0	32.0*	26.9*	32.0	26.3	23.6	21.0	18.3	18.3	14.6	14.6	12.5	12.5
8.0	27.2*	21.5*	26.9	20.4	21.1	19.0	17.0	16.1	14.0	14.0	11.9	11.9
9.0	-	-	-	-	19.9	16.0	15.8	13.6	13.1	13.1	11.4	11.4
10.0	-	-	-	-	18.1	13.6	14.4	11.6	12.0	11.4	10.8	10.8
12.0	-	-	-	-	13.7	9.9	12.0	8.7	10.2	8.7	9.8	8.5
14.0	-	-	-	-	10.5	7.4	9.8	6.7	8.9	6.7	8.7	6.7
16.0	-	-	-	-	8.2	5.6	7.9	5.2	7.8	5.3	7.6	5.3
18.0	-	-	-	-	-	-	6.4	4.0	6.6	4.2	6.6	4.2
20.0	-	-	-	-	-	-	5.1	3.0	5.5	3.3	5.5	3.4
22.0	-	-	-	-	-	-	4.1	2.2	4.5	2.6	4.5	2.7
24.0	-	-	-	-	-	-	3.2	1.5	3.7	1.9	3.7	2.1
26.0	-	-	-	-	-	-	-	-	3.0	1.4	3.1	1.6
28.0	-	-	-	-	-	-	-	-	2.4	1.0	2.5	1.1
30.0	-	-	-	-	-	-	-	-	-	-	2.0	0.7
32.0	-	-	-	-	-	-	-	-	-	-	1.6	-



TK



m	35.0 m											
	11.0 m						18.0 m					
	2.5°		12.5°		22.5°		2.5°		12.5°		22.5°	
t	t	t	t	t	t	t	t	t	t	t	t	
7.0	7.5	7.5	-	-	-	-	-	-	-	-	-	-
8.0	7.5	7.5	6.0	6.0	-	-	3.7	3.7	-	-	-	-
9.0	7.5	7.5	5.7	5.7	-	-	3.6	3.6	-	-	-	-
10.0	7.5	7.5	5.5	5.5	5.5	5.5	3.6	3.6	3.0	3.0	-	-
12.0	6.3	6.3	5.1	5.1	5.0	5.0	3.5	3.5	2.9	2.9	-	-
14.0	5.4	5.4	4.7	4.7	4.6	4.6	3.4	3.4	2.8	2.8	3.0	3.0
16.0	4.8	4.8	4.3	4.3	4.3	4.3	3.3	3.3	2.7	2.7	2.8	2.8
18.0	4.3	4.3	4.0	4.0	3.9	3.9	3.2	3.2	2.7	2.7	2.7	2.7
20.0	3.8	3.7	3.7	3.7	3.6	3.6	3.0	3.0	2.6	2.6	2.6	2.6
22.0	3.4	3.0	3.4	3.3	3.4	3.4	2.8	2.8	2.5	2.5	2.5	2.5
24.0	3.1	2.5	3.1	2.7	3.1	2.9	2.6	2.6	2.4	2.4	2.4	2.4
26.0	2.8	2.0	2.8	2.2	2.8	2.3	2.4	2.1	2.3	2.3	2.3	2.3
28.0	2.6	1.6	2.5	1.7	2.5	1.9	2.2	1.7	2.1	2.0	2.2	2.2
30.0	2.4	1.2	2.2	1.4	2.2	1.5	2.0	1.4	2.0	1.6	2.0	1.8
32.0	2.1	0.9	2.0	1.1	2.0	1.2	1.8	1.1	1.9	1.3	1.9	1.5
34.0	1.8	0.7	1.7	0.8	1.7	0.9	1.6	0.8	1.8	1.0	1.8	1.2
36.0	1.5	-	1.5	-	1.5	-	1.4	-	1.6	0.8	1.6	0.9
38.0	1.2	-	1.2	-	1.2	-	1.3	-	1.5	-	1.5	-
40.0	1.0	-	1.0	-	1.0	-	1.1	-	1.3	-	1.3	-
42.0	0.8	-	0.8	-	0.8	-	1.0	-	1.1	-	1.2	-
44.0	-	-	-	-	-	-	0.8	-	0.9	-	1.0	-
46.0	-	-	-	-	-	-	-	-	0.7	-	0.8	-

*Over rear / En arrière / Nach hinten / Over achterzijde



LIEBHERR 1070 (35 M)

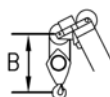
70 TON

Working speeds
Vitesses de travail

Arbeitsgeschwindigkeiten
Werksnelheden

Mechanisms Mécanismes Antriebe Aandrijvingen	Speeds Vitesses Geschwindigkeiten Snelheden	Rope diameter Diamètre du câble Seildurchmesser Kabeldiameter	Single line pull Effort sur brin simple Zulässiger Seilzug je strang Toegelaten trekkracht / part	Length of ropes Longueur des cables Länge der Seile Kabellengte
Main hoist Levage sur flèche Hubwerk 1 Hijsslier 1	0 – 120 m/min	20 mm	59 kN	180 m
Auxiliary hoist Levage sur fléchette Hubwerk 2 Hijsslier 2	0 – 100 m/min	20 mm	59 kN	180 m
Slewing gear Orientation Drehwerk Zwenkwerk	0 – 2 RPM			
Travel speed Vitesse sur route Fahrgeschwindigkeit Rijsnelheid	0 – 70 km/h			
Booming up Relever la flèche Aufwippen Optoppen	85° 70 sec			
Telescope Téléscoper Teleskopieren Telescoperen	11.3 - 35 m 105 sec			

Hook Block / Crane hook Crochet mouflé / Crochet simple



Unterflasche / Hakengehänge Kraanblok / Kraanhaak

Capacity Capacité Tragfähigkeit Capaciteit	Number of sheaves Nombre de poulies Anzahl der Rollen Aantal schijven	Number of lines Nombre de brins Strangzahl Aantal parten	Weight Poids Gewicht Gewicht	"B"
SWL 42.0 t	3	7	510 kg	2.0 m
SWL 6.0 t	-	1	150 kg	1.8 m