

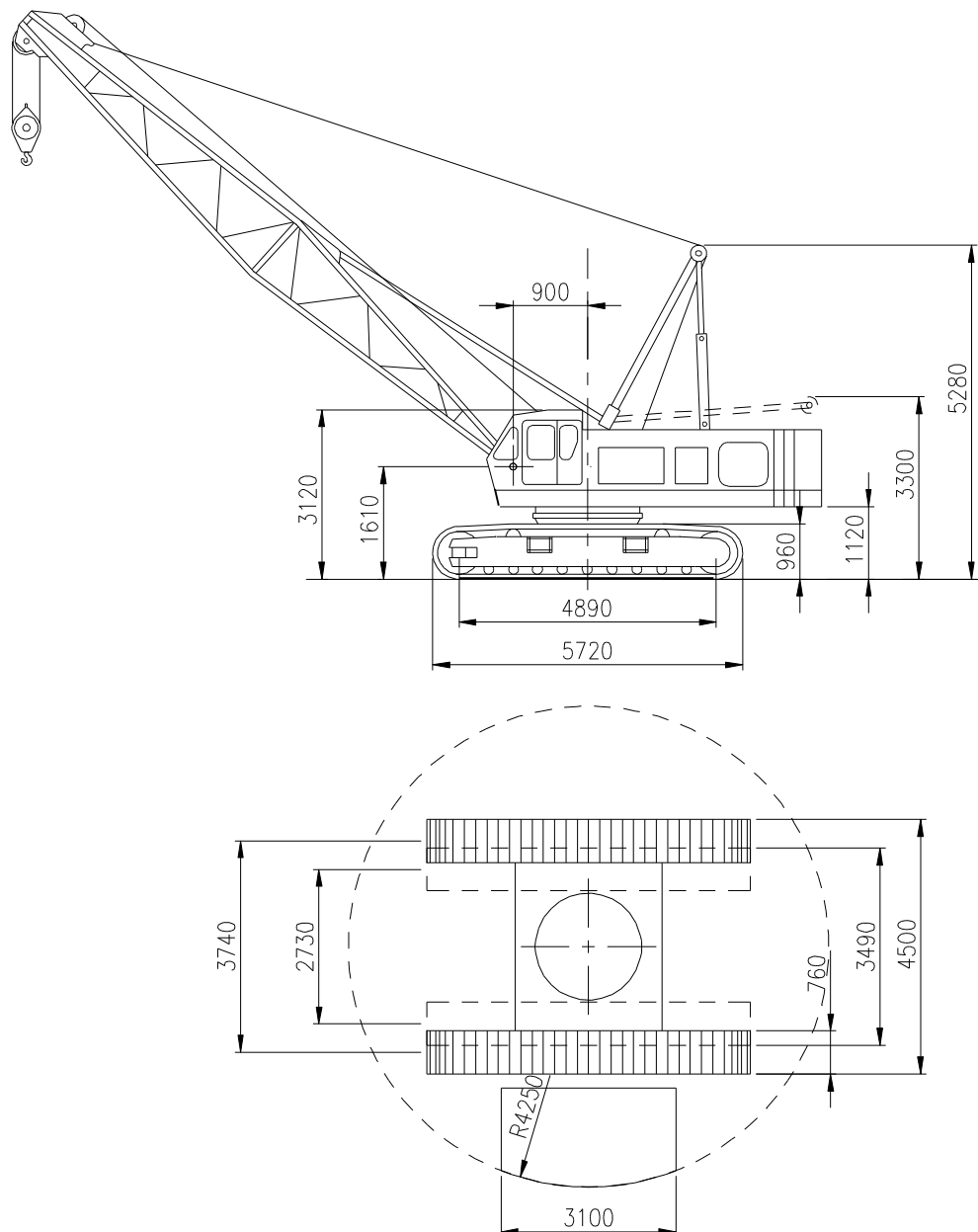


sarens
group

www.sarens.com

HITACHI KH 230-3

60 TON



Operating weight / Poids opérationnel / Betriebsgewicht / Bedrijfsgewicht : 60 t

( 22,8 t)

nothing too heavy, nothing too high





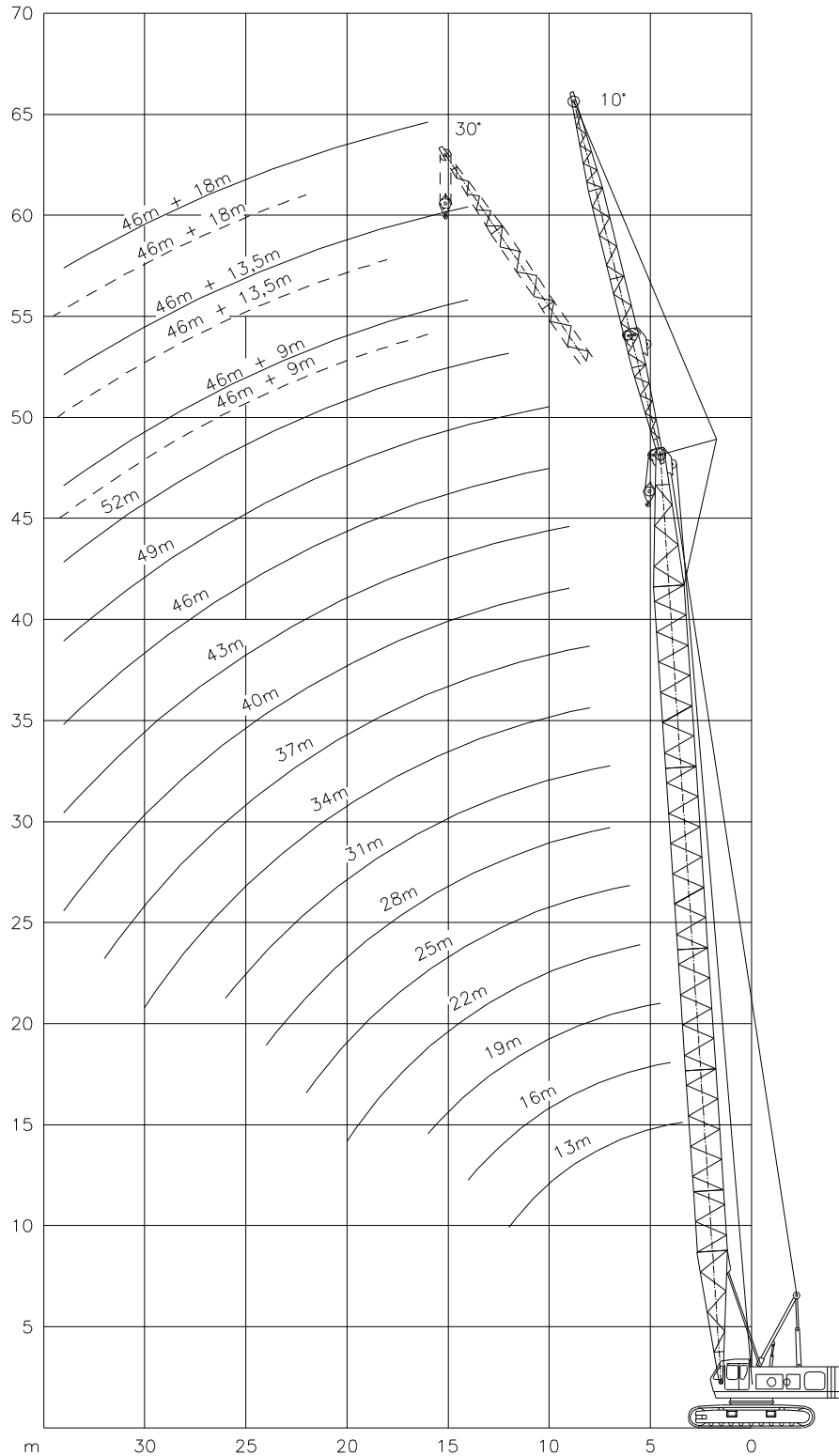
HITACHI KH 230-3

Working ranges
Portées

60 TON

Arbeitsbereiche
Werkbereich

MB – FJ



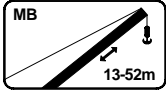


HITACHI KH 230-3

60 TON

Lifting capacities
Capacités

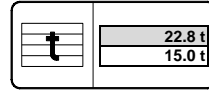
Tragfähigkeiten
Capaciteiten



MB

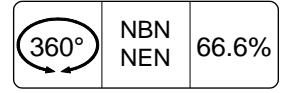


3.74m



22.8 t

15.0 t

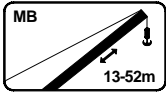


360°

NBN
NEN

66.6%

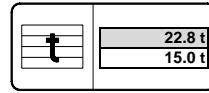
Lift Height (m)	13m	16m	19m	22m	25m	28m	31m	34m	37m	40m	43m	46m	49m	52m
	t	t	t	t	t	t	t	t	t	t	t	t	t	t
3.4	65.0	-	-	-	-	-	-	-	-	-	-	-	-	-
3.5	63.3	-	-	-	-	-	-	-	-	-	-	-	-	-
4.0	55.4	55.3	-	-	-	-	-	-	-	-	-	-	-	-
4.5	48.1	48.1	48.0	-	-	-	-	-	-	-	-	-	-	-
5.0	40.1	40.0	39.9	-	-	-	-	-	-	-	-	-	-	-
5.5	34.2	34.1	34.0	34.0	-	-	-	-	-	-	-	-	-	-
6.0	29.8	29.7	29.6	29.6	29.5	-	-	-	-	-	-	-	-	-
7.0	23.6	23.5	23.4	23.4	23.3	23.2	23.2	-	-	-	-	-	-	-
8.0	19.5	19.4	19.3	19.2	19.1	19.0	19.0	18.9	18.9	-	-	-	-	-
9.0	16.5	16.4	16.3	16.3	16.2	16.1	16.0	16.0	15.9	15.8	15.8	-	-	-
10.0	14.3	14.2	14.1	14.0	13.9	13.9	13.8	13.7	13.7	13.6	13.5	13.4	13.4	-
12.0	11.3	11.1	11.0	10.9	10.8	10.7	10.7	10.6	10.5	10.5	10.4	10.3	10.2	10.1
14.0	-	9.1	8.9	8.9	8.8	8.7	8.6	8.5	8.5	8.4	8.3	8.2	8.1	8.0
16.0	-	-	7.5	7.4	7.3	7.2	7.1	7.0	7.0	6.9	6.8	6.7	6.6	6.5
18.0	-	-	-	6.3	6.2	6.1	6.0	5.9	5.8	5.8	5.7	5.6	5.5	5.4
20.0	-	-	-	5.5	5.3	5.2	5.2	5.1	5.0	4.9	4.8	4.7	4.7	4.5
22.0	-	-	-	-	4.7	4.5	4.5	4.4	4.3	4.2	4.1	4.0	4.0	3.8
24.0	-	-	-	-	-	4.0	3.9	3.8	3.7	3.6	3.6	3.5	3.4	3.3
26.0	-	-	-	-	-	-	3.5	3.4	3.3	3.2	3.1	3.0	2.9	2.8
28.0	-	-	-	-	-	-	-	3.0	2.9	2.8	2.7	2.6	2.5	2.4
30.0	-	-	-	-	-	-	-	2.6	2.5	2.4	2.4	2.3	2.2	2.1
32.0	-	-	-	-	-	-	-	-	2.3	2.2	2.1	2.0	1.9	1.8
34.0	-	-	-	-	-	-	-	-	-	1.9	1.8	1.7	1.6	1.5



MB

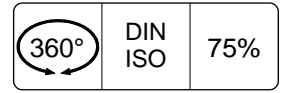


3.74m



22.8 t

15.0 t



360°

DIN
ISO

75%

Lift Height (m)	13m	16m	19m	22m	25m	28m	31m	34m	37m	40m	43m	46m	49m	52m
	t	t	t	t	t	t	t	t	t	t	t	t	t	t
3.4	65.0	-	-	-	-	-	-	-	-	-	-	-	-	-
3.5	63.3	-	-	-	-	-	-	-	-	-	-	-	-	-
4.0	55.4	54.6	-	-	-	-	-	-	-	-	-	-	-	-
4.5	49.1	47.6	44.5	-	-	-	-	-	-	-	-	-	-	-
5.0	44.1	42.2	39.7	-	-	-	-	-	-	-	-	-	-	-
5.5	38.5	37.8	35.8	34.0	-	-	-	-	-	-	-	-	-	-
6.0	33.5	33.4	32.6	31.0	29.6	-	-	-	-	-	-	-	-	-
7.0	26.5	26.4	26.3	26.3	25.2	24.2	23.3	-	-	-	-	-	-	-
8.0	21.9	21.8	21.7	21.6	21.5	21.2	20.4	19.6	18.9	-	-	-	-	-
9.0	18.6	18.5	18.3	18.3	18.2	18.1	18.0	17.4	16.8	16.3	15.7	-	-	-
10.0	16.1	16.0	15.8	15.8	15.7	15.6	15.5	15.5	15.1	14.7	13.9	13.2	10.8	-
12.0	12.7	12.5	12.4	12.3	12.2	12.1	12.0	11.9	11.8	11.8	11.7	11.3	10.3	8.6
14.0	-	10.2	10.0	10.0	9.8	9.7	9.7	9.6	9.5	9.4	9.3	9.2	9.2	8.2
16.0	-	-	8.4	8.3	8.2	8.1	8.0	7.9	7.8	7.7	7.7	7.6	7.5	7.3
18.0	-	-	-	7.1	6.9	6.8	6.8	6.7	6.6	6.5	6.4	6.3	6.2	6.1
20.0	-	-	-	6.1	6.0	5.9	5.8	5.7	5.6	5.5	5.4	5.3	5.2	5.1
22.0	-	-	-	-	5.2	5.1	5.0	4.9	4.8	4.7	4.6	4.5	4.5	4.3
24.0	-	-	-	-	-	4.5	4.4	4.3	4.2	4.1	4.0	3.9	3.8	3.7
26.0	-	-	-	-	-	-	3.9	3.8	3.7	3.6	3.5	3.4	3.3	3.1
28.0	-	-	-	-	-	-	-	3.3	3.2	3.1	3.0	2.9	2.8	2.7
30.0	-	-	-	-	-	-	-	3.0	2.9	2.8	2.7	2.5	2.4	2.2
32.0	-	-	-	-	-	-	-	-	2.5	2.4	2.3	2.2	2.0	1.8
34.0	-	-	-	-	-	-	-	-	-	2.1	2.0	1.8	1.7	1.5

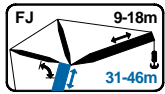


HITACHI KH 230-3

60 TON

Lifting capacities
Capacités

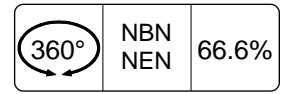
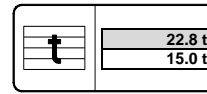
Tragfähigkeiten
Capaciteiten



FJ



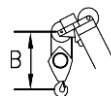
3.54m



m	31m						34m						37m						
	9.0m		13.5m		18.0m		9.0m		13.5m		18.0m		9.0m		13.5m		18.0m		
	10°	30°	10°	30°	10°	30°	10°	30°	10°	30°	10°	30°	10°	30°	10°	30°	10°	30°	
10.0	6.5	-	-	-	-	-	-	-	-	-	-	-	-	-	-	-	-	-	-
12.0	6.5	-	6.0	-	-	-	6.5	-	6.0	-	-	-	6.5	-	-	-	-	-	-
14.0	6.5	6.5	6.0	-	4.2	-	6.5	6.5	6.0	-	4.2	-	6.5	6.5	6.0	-	4.2	-	-
16.0	6.5	6.5	6.0	6.0	4.2	-	6.5	6.5	6.0	6.0	4.2	-	6.5	6.5	6.0	-	4.2	-	-
18.0	6.0	6.0	6.0	6.0	4.2	-	5.9	5.9	5.9	5.9	4.2	-	5.8	5.8	5.8	5.8	4.2	4.2	-
20.0	5.2	5.2	5.2	5.2	4.2	4.2	5.1	5.1	5.1	5.1	4.2	4.2	5.0	5.0	5.0	5.0	4.2	4.2	4.2
22.0	4.5	4.5	4.5	4.5	4.2	4.2	4.4	4.4	4.4	4.4	4.2	4.2	4.3	4.3	4.3	4.3	4.2	4.2	4.2
24.0	3.9	3.9	3.9	3.9	3.9	3.9	3.8	3.8	3.8	3.8	3.8	3.8	3.7	3.7	3.7	3.7	3.7	3.7	3.7
26.0	3.5	3.5	3.5	3.5	3.5	3.5	3.4	3.4	3.4	3.4	3.4	3.4	3.3	3.3	3.3	3.3	3.3	3.3	3.3
28.0	-	-	-	-	-	-	3.0	3.0	3.0	3.0	3.0	3.0	2.9	2.9	2.9	2.9	2.9	2.9	2.9
30.0	-	-	-	-	-	-	2.6	2.6	2.6	2.6	2.6	2.6	2.5	2.5	2.5	2.5	2.5	2.5	2.5
32.0	-	-	-	-	-	-	-	-	-	-	-	-	2.3	2.3	2.3	2.3	2.3	2.3	2.3

m	40m						43m						46m						
	9.0m		13.5m		18.0m		9.0m		13.5m		18.0m		9.0m		13.5m		18.0m		
	10°	30°	10°	30°	10°	30°	10°	30°	10°	30°	10°	30°	10°	30°	10°	30°	10°	30°	
12.0	6.5	-	-	-	-	-	6.5	-	-	-	-	-	6.5	-	-	-	-	-	-
14.0	6.5	6.5	6.0	-	-	-	6.5	-	6.0	-	-	-	6.5	-	6.0	-	-	-	-
16.0	6.5	6.5	6.0	-	4.2	-	6.5	6.5	6.0	-	4.2	-	6.5	6.5	6.0	-	4.2	-	-
18.0	5.8	5.8	5.8	5.8	4.2	-	5.7	5.7	5.7	5.7	4.2	-	5.6	5.6	5.6	5.6	4.2	4.2	-
20.0	4.9	4.9	4.9	4.9	4.2	4.2	4.8	4.8	4.8	4.8	4.2	-	4.7	4.7	4.7	4.7	4.2	4.2	-
22.0	4.2	4.2	4.2	4.2	4.2	4.2	4.1	4.1	4.1	4.1	4.1	4.1	4.0	4.0	4.0	4.0	4.0	4.0	4.0
24.0	3.6	3.6	3.6	3.6	3.6	3.6	3.6	3.6	3.6	3.6	3.6	3.6	3.5	3.5	3.5	3.5	3.5	3.5	3.5
26.0	3.2	3.2	3.2	3.2	3.2	3.2	3.1	3.1	3.1	3.1	3.1	3.1	3.0	3.0	3.0	3.0	3.0	3.0	3.0
28.0	2.8	2.8	2.8	2.8	2.8	2.8	2.7	2.7	2.7	2.7	2.7	2.7	2.6	2.6	2.6	2.6	2.6	2.6	2.6
30.0	2.4	2.4	2.4	2.4	2.4	2.4	2.4	2.4	2.4	2.4	2.4	2.4	2.3	2.3	2.3	2.3	2.3	2.3	2.3
32.0	2.2	2.2	2.2	2.2	2.2	2.2	2.1	2.1	2.1	2.1	2.1	2.1	2.0	2.0	2.0	2.0	2.0	2.0	2.0
34.0	1.9	1.9	1.9	1.9	1.9	1.9	1.8	1.8	1.8	1.8	1.8	1.8	1.7	1.7	1.7	1.7	1.7	1.7	1.7

Hook Block / Crane hook
Crochet mouflé / Crochet simple



Unterflasche / Hakengehänge
Kraanblok / Kraanhaak

Capacity Capacité Tragfähigkeit Capaciteit	Number of sheaves Nombre de poulies Anzahl der Rollen Aantal schijven	Number of lines Nombre de brins Strangzahl Aantal parten	Weight Poids Gewicht Gewicht	"B"
SWL 65 t	5	10	900 kg	2.5 m
SWL 45 t	3	7	410 kg	2.5 m
SWL 20 t	1	3	320 kg	2.5 m
SWL 6.5 t	-	1	260 kg	3.1 m