

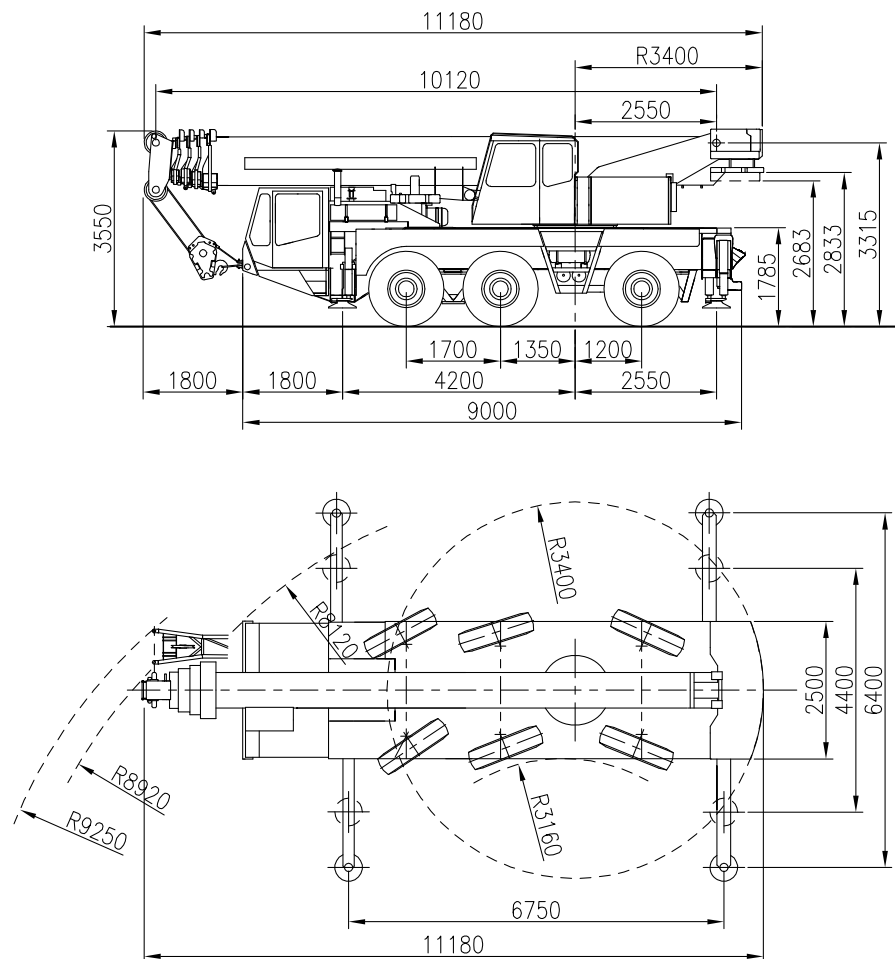


**sarens**  
group

[www.sarens.com](http://www.sarens.com)

## TEREX AC 155

### 50 TON



Axle load / Charge par essieu / Achslast / Aslast : 3 x 12 t  
Total weight / Poids total / Gesamtgewicht / Totaal gewicht : 36 t

(☐ 6 t)  
(☐ 6 t)

nothing too heavy, nothing too high





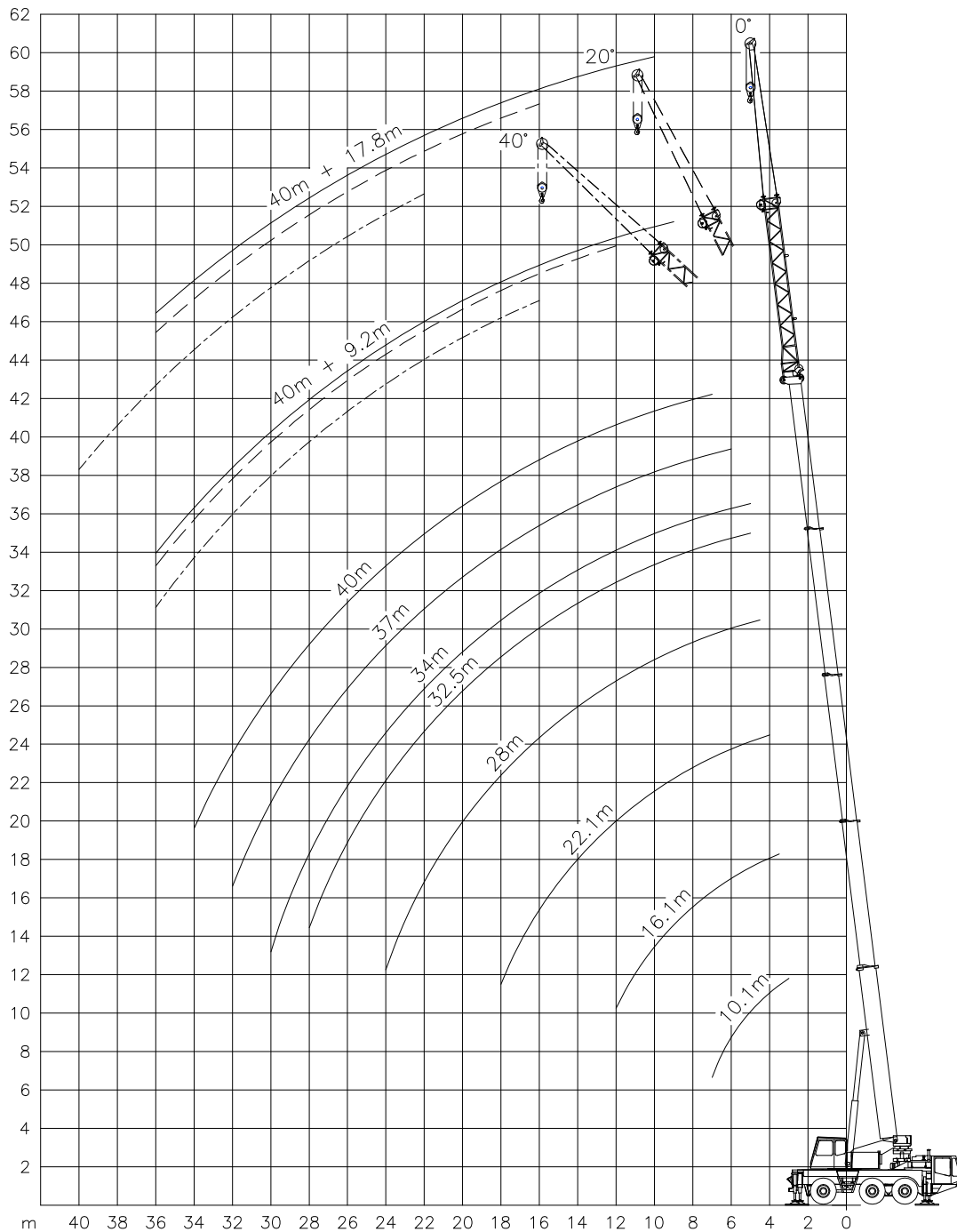
# TEREX AC 155

Working ranges  
Portées

## 50 TON

Arbeitsbereiche  
Werkbereich

Ha / HaV



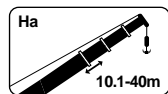


# TEREX AC 155

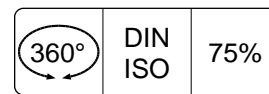
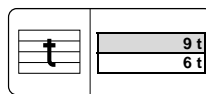
# 50 TON

Lifting capacities at main boom  
Capacités à la flèche principale

Tragfähigkeiten am Hauptausleger  
Capaciteiten aan de hoofdgiëk



Ha



	10.1 m	16.1 m	22.1 m	28.0 m	32.5 m	34.0 m	37.0 m	40.0 m
m	t	t	t	t	t	t	t	t
3.0	50.0 !*	-	-	-	-	-	-	-
3.0	44.3	-	-	-	-	-	-	-
3.5	40.3	28.0	-	-	-	-	-	-
4.0	37.0	28.0	16.0	-	-	-	-	-
4.5	34.1	28.0	16.0	13.0	-	-	-	-
5.0	31.6	28.0	16.0	13.0	7.0	9.5	-	-
6.0	26.2	25.0	15.8	13.0	7.0	9.5	8.0	-
7.0	20.9	19.8	15.6	12.4	7.0	9.3	7.9	6.5
8.0	-	16.0	15.4	11.7	7.0	9.0	7.7	6.5
9.0	-	14.3	14.1	11.0	7.0	8.7	7.5	6.4
10.0	-	12.0	11.9	10.4	7.0	8.4	7.3	6.3
12.0	-	9.0	9.4	8.9	6.4	7.8	6.8	6.1
14.0	-	-	7.3	6.9	5.6	6.9	6.4	5.7
16.0	-	-	5.9	6.0	4.9	5.5	5.6	5.2
18.0	-	-	4.9	5.0	4.2	4.5	4.5	4.6
20.0	-	-	-	4.2	3.7	3.7	3.7	3.7
22.0	-	-	-	3.6	3.3	3.0	3.0	3.0
24.0	-	-	-	3.0	2.9	2.4	2.5	2.5
26.0	-	-	-	-	2.7	2.0	2.0	2.0
28.0	-	-	-	-	2.3	1.6	1.6	1.6
30.0	-	-	-	-	-	1.2	1.3	1.3
32.0	-	-	-	-	-	-	0.9	1.0
34.0	-	-	-	-	-	-	-	0.7

	10.1 m	16.1 m	22.1 m	28.0 m	32.5 m	34.0 m	37.0 m	40.0 m
m	t	t	t	t	t	t	t	t
3.0	50.0 !*	-	-	-	-	-	-	-
3.0	44.0	-	-	-	-	-	-	-
3.5	40.2	28.0	-	-	-	-	-	-
4.0	36.8	28.0	16.0	-	-	-	-	-
4.5	34.0	28.0	16.0	13.0	-	-	-	-
5.0	30.9	28.0	16.0	13.0	7.0	9.5	-	-
6.0	24.2	23.0	15.8	13.0	7.0	9.5	8.0	-
7.0	18.1	17.1	15.6	12.4	7.0	9.3	7.9	6.5
8.0	-	15.1	14.9	11.7	7.0	9.0	7.7	6.5
9.0	-	12.4	12.2	11.0	7.0	8.7	7.5	6.4
10.0	-	10.4	10.8	10.3	7.0	8.4	7.3	6.3
12.0	-	7.7	8.1	7.6	6.4	7.7	6.8	6.1
14.0	-	-	6.3	6.4	5.6	5.9	5.9	5.7
16.0	-	-	5.0	5.2	4.9	4.6	4.7	4.7
18.0	-	-	4.1	4.2	4.2	3.7	3.7	3.7
20.0	-	-	-	3.5	3.6	2.9	3.0	3.0
22.0	-	-	-	2.9	3.0	2.3	2.3	2.3
24.0	-	-	-	2.4	2.5	1.8	1.8	1.8
26.0	-	-	-	-	2.1	1.4	1.4	1.4
28.0	-	-	-	-	1.7	1.0	1.1	1.1
30.0	-	-	-	-	-	0.7	0.7	0.7

!\* Over rear or front / En arrière ou devant / Nach hinten oder vorne / Over achterzijde of voorzijde.

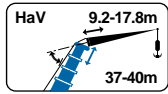


# TEREX AC 155

Lifting capacities  
Capacités

# 50 TON

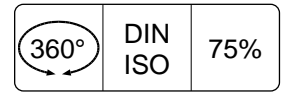
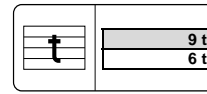
Tragfähigkeiten  
Capacités



HaV



6.4m

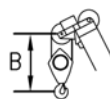


m	37.0 m					
	9.2 m			17.8 m		
	0°	20°	40°	0°	20°	40°
8.0	4.0	-	-	-	-	-
9.0	4.0	-	-	-	-	-
10.0	4.0	-	-	1.7	-	-
12.0	3.9	3.5	-	1.7	-	-
14.0	3.7	3.5	3.2	1.7	-	-
16.0	3.6	3.3	3.1	1.7	1.6	-
18.0	3.4	3.2	3.0	1.7	1.6	-
20.0	3.3	3.0	2.8	1.6	1.6	-
22.0	3.1	2.9	2.8	1.6	1.5	1.4
24.0	2.5	2.8	2.7	1.5	1.5	1.4
26.0	2.1	2.3	2.5	1.5	1.4	1.4
28.0	1.7	1.9	2.0	1.4	1.4	1.3
30.0	1.3	1.5	1.7	1.4	1.3	1.3
32.0	1.1	1.2	1.3	1.2	1.3	1.2
34.0	0.8	0.9	1.0	0.9	1.2	1.2
36.0	0.6	0.7	-	0.7	1.0	1.1
38.0	-	-	-	-	0.8	1.0
40.0	-	-	-	-	0.6	0.7

m	40.0 m					
	9.2 m			17.8 m		
	0°	20°	40°	0°	20°	40°
-	-	-	-	-	-	-
3.0	-	-	-	1.0	-	-
3.0	3.0	-	-	1.0	-	-
3.0	3.0	-	-	1.0	-	-
3.0	3.0	2.8	-	1.0	1.0	-
2.9	2.8	2.7	-	1.0	1.0	-
2.8	2.7	2.5	-	1.0	1.0	-
2.7	2.6	2.4	-	1.0	1.0	1.0
2.5	2.4	2.3	-	1.0	1.0	1.0
2.0	2.3	2.2	-	1.0	1.0	1.0
1.6	1.9	2.0	-	1.0	1.0	1.0
1.3	1.5	1.6	-	1.0	1.0	1.0
1.0	1.2	1.3	-	1.0	1.0	1.0
0.8	0.9	1.0	-	0.9	1.0	0.9
0.6	0.7	0.8	-	0.7	1.0	0.9
-	-	-	-	-	0.8	0.9
-	-	-	-	-	-	0.7

m	37.0 m					
	9.2 m			17.8 m		
	0°	20°	40°	0°	20°	40°
8.0	4.0	-	-	-	-	-
9.0	4.0	-	-	-	-	-
10.0	4.0	-	-	1.7	-	-
12.0	3.9	3.5	-	1.7	-	-
14.0	3.7	3.5	3.2	1.7	-	-
16.0	3.6	3.3	3.1	1.7	1.6	-
18.0	3.4	3.2	3.0	1.7	1.6	-
20.0	3.0	3.0	2.8	1.6	1.6	-
22.0	2.4	2.8	2.8	1.6	1.5	1.4
24.0	1.9	2.2	2.5	1.5	1.5	1.4
26.0	1.5	1.8	2.0	1.5	1.4	1.4
28.0	1.1	1.4	1.5	1.3	1.4	1.3
30.0	0.9	1.0	1.2	1.0	1.3	1.3
32.0	0.6	0.8	0.9	0.8	1.1	1.2
34.0	-	-	0.6	-	0.9	1.1
36.0	-	-	-	-	0.6	0.8
38.0	-	-	-	-	-	0.6

m	40.0 m					
	9.2 m			17.8 m		
	0°	20°	40°	0°	20°	40°
-	-	-	-	-	-	-
3.0	-	-	-	1.0	-	-
3.0	3.0	-	-	1.0	-	-
3.0	3.0	-	-	1.0	-	-
3.0	3.0	2.8	-	1.0	1.0	-
2.9	2.8	2.7	-	1.0	1.0	-
2.8	2.7	2.5	-	1.0	1.0	-
2.4	2.6	2.4	-	1.0	1.0	1.0
1.9	2.2	2.3	-	1.0	1.0	1.0
1.5	1.7	1.9	-	1.0	1.0	1.0
1.1	1.4	1.5	-	1.0	1.0	1.0
0.8	1.0	1.2	-	0.9	1.0	1.0
0.6	0.7	0.9	-	0.7	1.0	1.0
-	-	0.6	-	-	0.8	0.9
-	-	-	-	-	0.6	0.8
-	-	-	-	-	-	0.6



## Hook block/Crane hook

## Unterflasche/Hakengehänge

Capacity Capacité Tragfähigkeit Capaciteit	Number of sheaves Nombre de poulies Anzahl der rollen Aantal schijven	Number of lines Nombre de brins Strangzahl Aantal parten	Weight Poids Gewicht Gewicht	"B"
SWL 50.0 t	6	12	480 kg	2.0 m
SWL 30.0 t	3	7	370 kg	1.8 m
SWL 13.0 t	1	3	250 kg	1.8 m
SWL 4.3 t	-	1	130 kg	1.7 m