

TRAINING CENTER



sarens

	2		18
CONTENT		IS-031 WORKING WITH ROTATING TELEHANDLER	
	5		20
TRAINING CENTER		IS-032 WORKING WITH ROTATING TELEHANDLER WITH HOISTING FUNCTION	
	6		22
AV-006 WORKING WITH PERSONAL FALL PROTECTION		ECOL	
	8		24
AV-013 WORKING WITH MOBILE CRANE (CRAWLERS / AUTO TRUCK / ROUGH TERRAIN CRANE)		TCVT-RA W4-01	
	10		26
IS-001 WORKING WITH FORKLIFT		LOAD SECURING	
	12		27
IS-005 WORKING WITH SELF-PROPELLED AERIAL WORK PLATFORM		SPMT OPERATOR K24ST	
	14		28
IS-006 RIGGING AND SLINGING OF CRITICAL LOADS		CUSTOMIZED TRAINING & REGISTRATION	
	16		29
IS-011 WORKING WITH OVERHEAD CRANE		TEAM	
			30
		LOCATION	
			31
		NOTES	



ABOUT US

NOTHING TOO HEAVY, NOTHING TOO HIGH

Since 2017, Sarens has its own in-house training center, located at the Sarens yard in Wolvertem, Belgium. The training center primarily exists to provide the required trainings to the Sarens employees. In addition we can provide trainings for our clients as well. We strive for a perfect balance between theoretical and applied knowledge, including practical experience, so that the challenges of today and tomorrow can be met in a professional and correct manner.

By training our own employees, we can exceed the minimum requirements, and better assess and strengthen competencies. Ultimately, our goal is to offer training of the highest quality. The number of participants per training is limited to guarantee a qualitative training.

This fits within the general frame of the safety management at Sarens where the general safety precaution No. 5 says: "I must be trained, certified, and authorized to operate plant, equipment, and machinery and must abide by the manufacturers rules". In all our trainings the emphasis is placed on correct safety behavior, with the wearing of personal protection equipment and the correct application of the proven safety measures when working at height taking precedence.

The Sarens training center is recognized as a training and examination center for training courses in the context of high risk tasks according to BeSaCC-VCA, for which the training center has successfully undergone audits by QFor.

With the addition of ECOL (European Crane Operator Licence) to the training center courses, Sarens supports and promotes the guarantee of professional competences and the importance of a uniform certificate for crane operators within Europe.

In 2021 the training center was renewed and enlarged to 28 x 58 m².

In 2022 our trainers have achieved TCVT recognition and the terrain of the training center has been approved as an examination location, which allows us to expand our offer to include the TCVT-RA W4-01 training and refresher courses.

As an internal training center we have the flexibility to adapt to the internal needs and requests. In addition to our own employees, our clients' employees can also register. Our expertise and flexibility make it possible to provide customized trainings on request.

We look forward to welcoming you on one of our trainings.



Learn how to use personal fall protection safely and effectively.

TARGET AUDIENCE:

Employees who have to protect themselves with personal fall protection in the execution of their job.

ADMISSION REQUIREMENTS:

- Minimum age of 18 years;
- Valid certificate of medical fitness.

COURSE:

Training: 0,5 day

Theoretical examination: 30 minutes

Practical examination: 15 minutes

Language: Dutch / English

CONTENT:

Theory:

- Content of the safety function;
- Interpret and comply with work permits;
- Standards and legislation regarding regulations and inspections;
- Fall hazards and risks;
- Inspection, care and maintenance procedures;
- Forces on the body and arresting a fall;
- Aspects of good anchoring;
- Handling of the gear and loads;
- Usage of anchor points, safety lines, shock absorber and fall protection.

Practice:

- Putting on and adjusting the harness;
- General safety rules;
- Handling the gear and the load;
- Usage of anchor points, safety line, shock absorber and fall protection.

VALIDITY CERTIFICATE:

Maximum 10 years.

Every 5 years the company carries out an evaluation to check whether the employee still meets the conditions.

PRACTICAL INFO:

- Maximum number of participants: 5;
- Bring PPE and high visibility jacket;
- No fear of heights.





AV-013 WORKING WITH MOBILE CRANE (CRAWLERS / AUTO TRUCK / ROUGH TERRAIN CRANE)

Learn how to operate a crane safely and effectively.

TARGET AUDIENCE:

Every future crane operator of crawler / auto truck / rough terrain / all terrain mobile cranes.
Every employee who has to safely operate a mobile crane on site.

ADMISSION REQUIREMENTS:

- Minimum age of 18 years;
- Valid certificate of medical fitness.

COURSE:

Training - with experience: 5 days
Theoretical examination: 30 minutes
Practical examination: 45 minutes
Language: Dutch / English

CONTENT:

Theory:

- Content of the safety function;
- Interpret and comply with work permits;
- Standards and legislation regarding regulations and inspections;
- Preparation of works before using mobile crane;
- Types of mobile cranes, components and vital safety devices;
- Knowledge about maintenance, inspection and daily controls of equipment;
- Rigging equipment, center of gravity and weight of the loads;
- Rules for moving mobile cranes;
- Recognize, interpret and solve certain failures or malfunctions;
- Standard safety measures during use of mobile crane;
- Actions at the end of work;
- Environmental aspects ;
- Communication on site.

Practice:

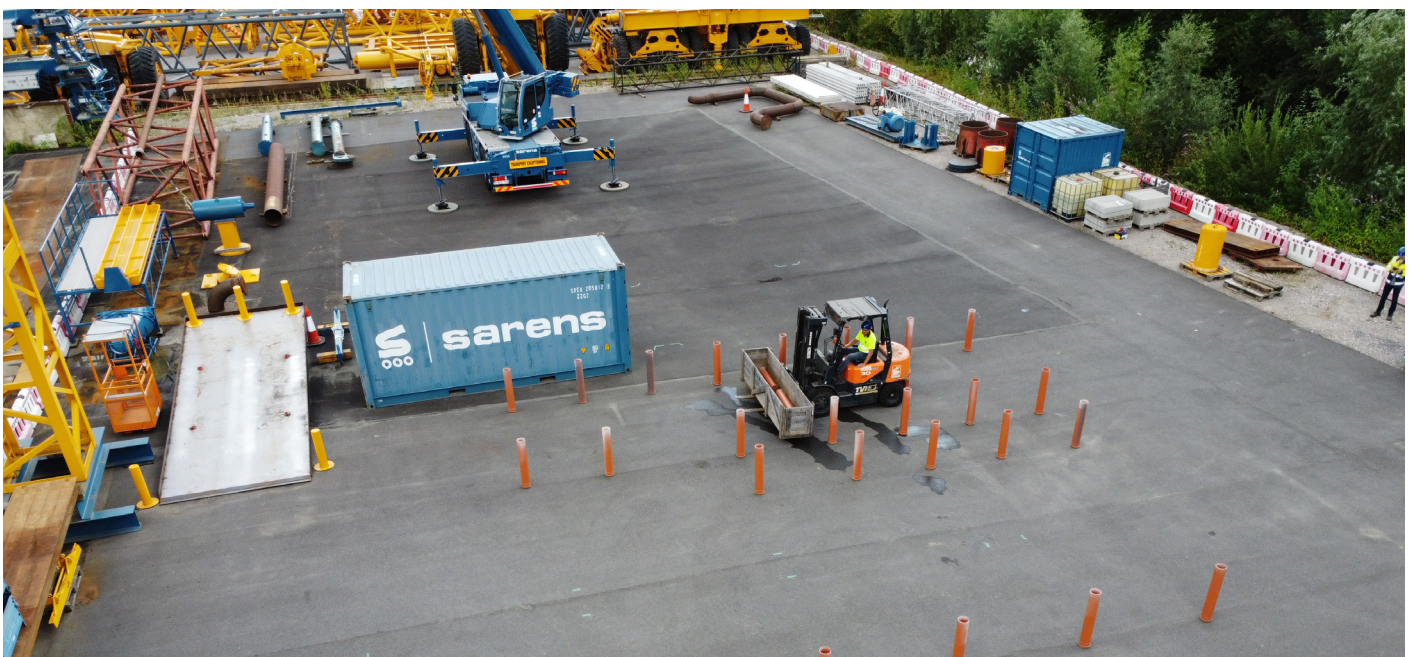
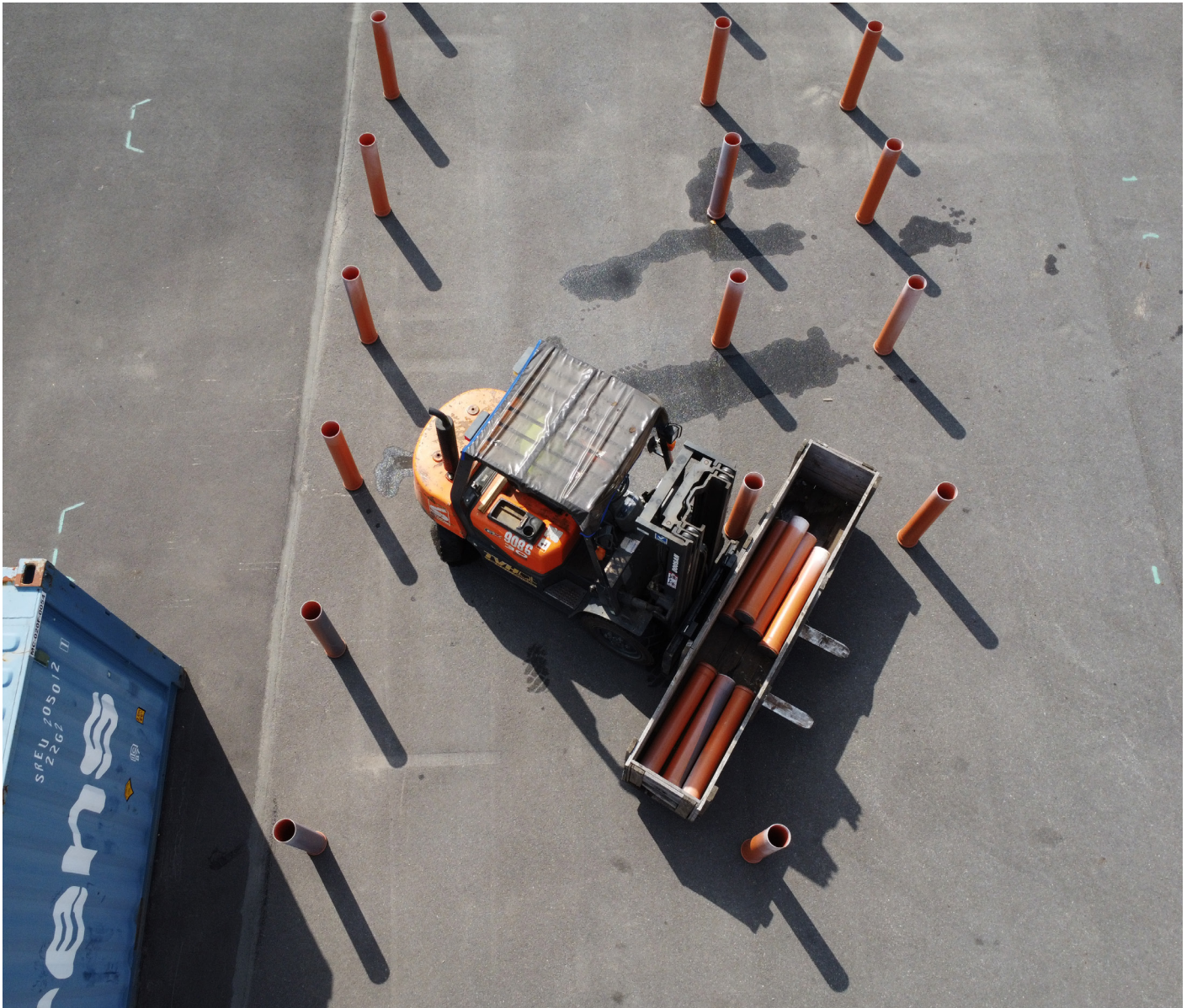
- Execute practical preparation before using the mobile crane;
- Inspection of the mobile crane;
- Rigging loads with different methods;
- Perform lifting operation and control movements with the crane;
- Reading load chart;
- Moving the mobile crane;
- Perform daily maintenance;
- Recognize failures or malfunctions;
- Recognize risks and take control measures;
- Finish work and correct storage of equipment;
- Preparing the mobile crane for transport.

VALIDITY CERTIFICATE:

Maximum 10 years.
Every 5 years the company carries out an evaluation to check whether the employee still meets the conditions.

PRACTICAL INFO:

- Maximum number of participants: 2;
- Bring PPE and high visibility jacket.



Learn how to operate a forklift safely and effectively.

TARGET AUDIENCE:

Employees who have to work with a forklift on an industrial site, in plants, workshops and warehouses where the tasks have a certain degree of difficulty, e.g. whether stacking in height, driving and stacking in a limited space, under time pressure, in the surroundings of important installations, intensive loading and unloading, in places with traffic of people and/or other means of transport. For employees who work in the (petro) chemical industry, this exam must be taken in a recognized center.

ADMISSION REQUIREMENTS:

- Minimum age of 18 years;
- Valid certificate of medical fitness.

COURSE:

Training:

- Without experience: 2 days
- With experience: 1 day

Theoretical examination: 30 minutes

Practical examination: 30 minutes

Language: Dutch / English

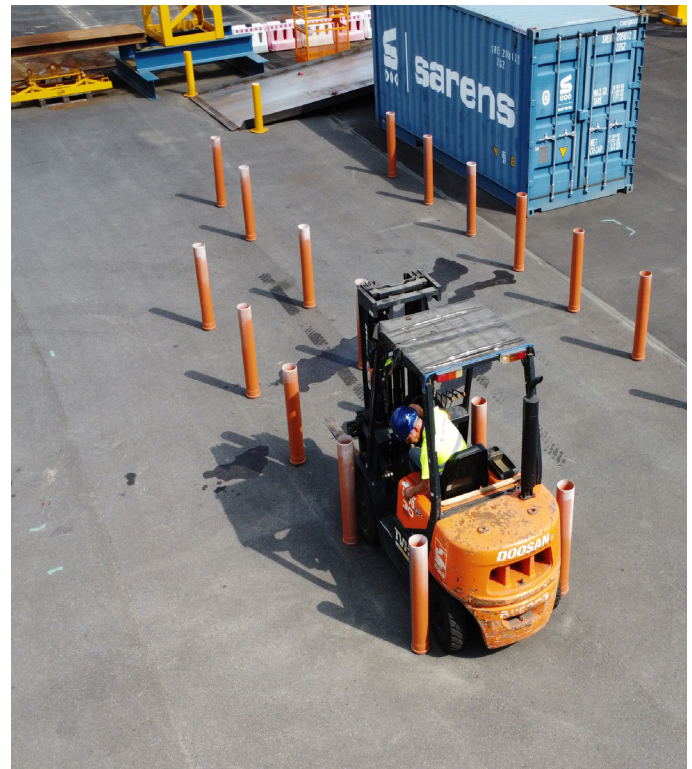
CONTENT:

Theory:

- Definition of a forklift and its different applications;
- Activities for which a forklift can be used;;
- Related transport means for horizontal and vertical transport;
- Tools for horizontal and vertical transport and handling special loads;
- Different types of pallets and storage methods;
- Important construction components of a forklift;
- Different drive systems and respective applications;
- Basic regulation for using a forklift;
- Safety and traffic rules;
- Factors that affect stability;
- Load diagram;
- Checks in pre-start inspection;
- Perform LMRA.

VALIDITY CERTIFICATE:

Maximum 5 years.



Practice:

- Execute pre-start inspection;
- Performing slalom, forward and backward;
- Driving through a narrow passage, forward and backward;
- Loading and unloading of container or truck with pallets next to each other;
- Picking up high load onto the forks, moving and placing it;
- Stacking of loaded pallets in racks;
- Driving on a slope;
- Moving and stacking boxes, type mesh boxes;
- Moving long load forward and backward through narrow passage;
- Parking the forklift at appropriate place and leaving it correctly.
- Charging traction battery, refueling diesel, and replacing LPC cylinder;

PRACTICAL INFO:

- Maximum number of participants: 5;
- Bring PPE and high visibility jacket.



Learn how to operate an aerial work platform safely and effectively.

TARGET AUDIENCE:

Employees who have to work with an aerial work platform on an industrial site, in plants, workshops and warehouses. Moving and performing work at height using an aerial work platform (articulated or telescopic). For employees who work in the (petro) chemical industry, this exam must be taken in a recognized center.

ADMISSION REQUIREMENTS:

- Minimum age of 18 years;
- Valid certificate of medical fitness.

COURSE:

Training:

- Without experience: 2 days
- With experience: 1 day

Theoretical examination: 40 minutes

Practical examination: 30 minutes

Language: Dutch / English

CONTENT:

Theory:

- Definition of an aerial work platform and its different applications;
- Types of an aerial work platform and their limitations
- Different lifting and boom systems;
- Different drive systems and respective applications;
- Basic regulation for using aerial work platform;
- Safety instructions;
- Environmental risks and safety measures;
- Influence and risk of lateral loads;
- Basic terminology of control units;
- Important construction components of an aerial work platform;
- Stability concept;
- Symbols on an aerial work platform;
- Structural lifting components and control sequence;
- Checks in pre-start inspection;
- Perform LMRA. •

Practice:

- Execute pre-start inspection;
- Lifting the aerial work platform to its maximum height and driving with it for a couple of meters.
- Driving through narrow passage, forward and backward;
- Performing slalom, forward and backward;
- Position the aerial work platform in an angle with respect to an object at height and approach the object;
- Approaching an object at height behind a standing obstacle;
- Parking the aerial work platform correctly and charging the traction battery or refueling respectively.

VALIDITY CERTIFICATE:

Maximum 5 years.

PRACTICAL INFO:

- Maximum number of participants: 5;
- Bring PPE and high visibility jacket;
- No fear of heights.



Learn how to lift combined or critical loads safely and effectively.

TARGET AUDIENCE:

Employees who have to lift critical loads and/or coordinate these works when performing lifting operation on an industrial site, in plants. For employees who work in the (petro) chemical industry, this exam must be taken in a recognized center.

ADMISSION REQUIREMENTS:

- Minimum age of 18 years;
- Valid certificate of medical fitness.

COURSE:

Training:

- Without experience: 4 days
- With experience: 2 days

Theoretical examination: 30 minutes

Practical examination: 45 minutes

Language: Dutch / English

CONTENT:

Theory:

- Definition of critical loads;
- Risks when rigging and slinging of loads;
- Legislation and standards;
- Inspections and regulations;
- Basic characteristics of a load;
- Forces in rigging equipment;
- Basic terminology of forces;
- Basic terminology of rigging equipment and calculating loads in rigging equipment;
- Conventional hand and arm signals;
- Types of rigging equipment, application, advantages and disadvantages;
- Maintenance, inspection and storage of different types of rigging equipment;
- Reading and understanding information on labels of rigging equipment;
- Determining safe slinging of the load with different rigging equipment and accessories, depending on the type of load;
- Points of attention for risk analysis in lifting.

Practice:

- Determine the center of gravity of a complex structure in order to rig and position it correctly;
- Rigging of heavy load with imbalance;
- Rigging correctly of an electric motor, moving and placing on a foundation;
- Rigging and slinging of a long load, tailing and placing it in the other direction;
- Guiding of load along a route.

VALIDITY CERTIFICATE:

Maximum 5 years.

PRACTICAL INFO:

- Maximum number of participants: 5;
- Bring PPE and high visibility jacket.



Learn how to operate an overhead crane safely and effectively.

TARGET AUDIENCE:

Employees who work with overhead cranes by cable control and/or remote control.

ADMISSION REQUIREMENTS:

- Minimum age of 18 years;
- Valid certificate of medical fitness.

COURSE:

Training:

- Without experience: 2 days
- With experience: 1 day

Theoretical examination: 15 minutes

Practical examination: 30 minutes

Language: Dutch / English

CONTENT:

Theory:

- Content of the safety function;
- Interpret and comply with work permits;
- Basic legislation for overhead crane operator;
- Know the inspection requirements for hoisting equipment and rigging;
- Be able to record, analyse and inspect any risks inherent to the device;
- Safety instructions;
- Important construction components and functions of an overhead crane;
- Types of overhead cranes and their application;
- Points of attention for safe load handling;
- Hoisting equipment and hoisting accessories;
- Storing equipment correctly;
- Interchangeable rigging equipment;
- Different slinging methods;
- Visual inspection;
- Use of protective equipment;
- Signals when working with two or more persons.

Practice:

- Safety rules;
- Perform and report daily checks;
- Use of operating mechanism;
- Respect working height;
- Slinging of loads;
- Neutralizing and avoiding pendulum motion of a load;
- Using hand signals;
- Execute faultless movement – vertical, horizontal and combined movements;
- Maneuver with various loads;
- Turning of loads;
- Avoid negative loading;
- Estimate distances;
- Parking the overhead crane in a correct way.

VALIDITY CERTIFICATE:

Maximum 10 years.

Every 5 years the company carries out an evaluation to check whether the employee still meets the conditions.

PRACTICAL INFO:

- Maximum number of participants: 5;
- Bring PPE and high visibility jacket.



Learn how to operate a rotating telehandler safely and effectively.

TARGET AUDIENCE:

Employees who have to work with a rotating telehandler on an industrial site or plants, whether they must stack loads from a distance or at a height, driving and stacking in a limited space, under time pressure, in the surroundings of important installations, or loading and unloading truck, in places with traffic of people and/or other means of transport. For employees who work in the (petro) chemical industry, this exam must be taken in a recognized center.

ADMISSION REQUIREMENTS:

- Minimum age of 18 years;
- Valid certificate of medical fitness.

COURSE:

Training:

- Without experience: 3 days
- With experience: 2 days

Theoretical examination: 30 minutes

Practical examination: 30 minutes

Language: Dutch / English

CONTENT:

Theory:

- Definition of a telehandler and its different applications;
- Activities for which a telehandler can be used;
- Related transport means for horizontal and vertical transport;
- Tools for horizontal and vertical transport and handling special loads;
- Different types of pallets and storage methods;
- Important construction components of a telehandler;
- Basic regulation for using a telehandler;
- Safety and traffic rules;
- Factors that affect stability;
- Load diagram;
- Checks in pre-start inspection;
- Perform LMRA.

Practice:

- Execute pre-start inspection;
- Performing slalom, forward and backward, with 4-wheel steering;
- Driving through a narrow passage, forward and backward;
- Picking up high load onto the forks, moving and placing it;
- Picking up various loads onto the forks, moving and placing it at height;
- Picking up long horizontal load and placing it in indicated direction;
- Parking the telehandler at appropriate place.

VALIDITY CERTIFICATE:

Maximum 5 years.

PRACTICAL INFO:

- Maximum number of participants: 4;
- Bring PPE and high visibility jacket.



Learn how to operate a rotating telehandler with hoisting function safely and effectively.

TARGET AUDIENCE:

Employees who have to work with a rotating telehandler and have to move suspended loads on an industrial site or plants, whether they must stack loads from a distance or at a height, driving and stacking in a limited space, under time pressure, in the surroundings of important installations or loading and unloading truck, in places with traffic of people and/or other means of transport. For employees who work in the (petro) chemical industry, this exam must be taken in a recognized center.

ADMISSION REQUIREMENTS:

- Minimum age of 18 years;
- Valid certificate of medical fitness.

COURSE:

Training:

- Without experience: 4 days
- With experience: 2 days

Theoretical examination: 40 minutes

Practical examination: 45 minutes

Language: Dutch / English

CONTENT:

Theory:

- Definition of a telehandler and its different applications;
- Activities for which a telehandler can be used;
- Related transport means for horizontal and vertical transport;
- Tools for horizontal and vertical transport and handling special loads;
- Different types of pallets and storage methods;
- Important construction components of a telehandler;
- Basic regulation for using a telehandler with hoisting function;
- Safety and traffic rules;
- Points of attention rigging and slinging of loads;
- Factors that affect stability;
- Conventional hand and arm signals;
- Load diagram;
- Checks in pre-start inspection;
- Perform LMRA.

Practice:

- Execute pre-start inspection;
- Performing slalom, forward and backward, with 4-wheel steering;
- Driving with a suspended load through a narrow passage, forward and backward;
- Picking up high load onto the forks, moving and placing it;
- Picking up various loads onto the forks, moving and placing it at height;
- Picking up long horizontal load, tailing and placing it in indicated direction;
- Moving suspended load through slalom, above and next to obstacles and placing it;
- Neutralizing pendulum motion of a load;
- Parking the telehandler at appropriate place.

VALIDITY CERTIFICATE:

Maximum 5 years.

PRACTICAL INFO:

- Maximum number of participants: 4;
- Bring PPE and high visibility jacket.



Learn how to operate a crane safely and effectively.

TARGET AUDIENCE:

Employees who have to work with a crane.
ECOL stands for European Crane Operator Licence.
ECOL was established by ESTA, the European Association of Abnormal Road and Mobile Cranes, to become the standard within Europe as a uniform certificate for crane operators.

ADMISSION REQUIREMENTS:

- Minimum age of 18 years;
- Valid certificate of medical fitness;
- Driving licence C;
- Basic knowledge of English.

COURSE:

Training:

- ECOL-6: 31 days (6 weeks)
less than 4 years of experience
- ECOL-3 : 16 days (3 weeks)
between 4 and 8 years of experience
- ECOL-1: 6 days (1 week)
more than 8 years of experience
- ECOL-R : 3 days
renewal for 5 years

Examination: 1 day, including English language test.

CONTENT:

Theory:

- Role and responsibility of a crane operator;
- Preparation for work;
- Transport and manoeuvres;
- Preparation of work on site;
- Putting the crane into operation;
- Performing lift work;
- Finishing the job;
- Knowledge and skills: safety and health;
- Using a mobile crane for its intended purpose.

VALIDITY CERTIFICATE:

Maximum 5 years. The certificate is valid for 5 years. The certificate can be renewed if all conditions are met:

- Following two intermediate training days (ECOL-R) of which the first training day falls in the first 36 months of the period and the second training day falls after a period of 36 months.
- During these 5 years, a minimum of 2500 hours on the crane, of which at least 500 hours must fall within the last 2 years.
- Completions of the ECOL skillrecord

As long as the crane operator continues to meet the requirements every 5 years, he can renew his certificate at any time.

PRACTICAL INFO:

- Maximum number of participants: 2 per crane;
- Bring PPE and high visibility jacket.





Learn how to operate a crane safely and effectively.

TARGET AUDIENCE:

Employees who need a certification of the certificate W4-01 Operator Mobile Crane.
TCVT stands for Stichting Toezicht Certificatie Verticaal Transport;
TCVT RA stands for TCVT Register Administratie.
In the Netherlands, this certificate of professional competence is mandatory for crane operators.

ADMISSION REQUIREMENTS:

- Minimum age of 18 years;
- Valid certificate of medical fitness.

COURSE:

Training:

- Training W4-01 - with experience: 1 week;
- Examination W4-01: 1 day;
- Refresher module A & B: 1 day;
- Refresher module C & D: 1 day;

Language: Dutch / English.

CONTENT:

Theory:

- Role and responsibility of a crane operator;
- Preparation for work;
- Transport and manoeuvres;
- Preparation of work on site;
- Putting the crane into operation;
- Performing lift work;
- Finishing the job;
- Knowledge and skills: safety and health;
- Using a mobile crane for its intended purpose.

There are 4 different modules, which may be taken in any order:

- Combination module A & B – 1 day
 - Module A: Work preparation and execution
 - Module B: Hoisting equipment
- Combination module C & D – 1 day
 - Module C: Safety and environment
 - Module D: Maintenance and troubleshooting

VALIDITY CERTIFICATE:

Maximum 5 years. The certificate can be renewed if all conditions are met.

To be eligible for re-registration of TCVT-RA, the following conditions must be met during the 5 years of validity:

- Periodic training:
 - The first day of training must be attended within the first 36 months of the 5-year certification period.
 - The second day of training must be attended within the last 24 months of the 5-year certification period
- Practical experience:
 - Registration of practical experience: in the period of 5 years of validity, must have worked at least 8 quarters in the function indicated on the registration, of which at least 2 quarters in the last 3 years.

PRACTICAL INFO:

- Maximum number of participants: 2 per crane in training course / 8 in refresher course;
- Bring PPE and high visibility jacket.

LOAD SECURING

Learn to secure loads safely and effectively

TARGET AUDIENCE:

Employees who need to be able to secure a load in a safe manner.

ADMISSION REQUIREMENTS:

- Minimum age of 18 years;
- Valid certificate of medical fitness.

COURSE:

Training: 0,5 day

Language: Dutch / English

CONTENT:

Theory:

- Requirements for safe securing of cargo and safe use of lashing tools;
- Rules and responsibilities of persons involved in securing the load;
- Force distribution in lashing loads;
- Importance of coefficient of acceleration and coefficient of friction;
- Determining coefficient of friction of a combination of materials;
- Risk of overturning of the load;
- Lashing methods (blocks and braces, direct lashing, lashing);
- Variables for calculations in lashing the load;
- Lashing capacity (LC) and standard tension force (STF);
- Types of lashing devices (webbing, lashing chain, tension cable);
- Auxiliary materials for securing a load.

Practice:

- Application and use of lashing equipment (webbing, lashing chain, tension cable);
- Selection of correct lashing method;
- Understand information on the label of lashing tools;
- Distribute load among the axles of a transport vehicle, using calculation tools

VALIDITY CERTIFICATE:

Certificate of participation.

PRACTICAL INFO:

- Maximum number of participants: 8;
- Bring PPE and high visibility jacket.

Learn how to operate an SPMT K24ST safely and effectively.

TARGET AUDIENCE:

Employees who need to perform transport with SPMT K24ST in a safe manner.

ADMISSION REQUIREMENTS:

- Minimum age of 18 years;
- Valid certificate of medical fitness.

COURSE:

Training:

- Level 1 - Introduction: 3 days;
- Level 2 - Junior Operator: 3 days

Language: Dutch / English / French

CONTENT:

Level 1:

- Introduction to SPMT;
- Introduction to hydraulic suspension and stability;
- Lifting of trailers and PPU;
- Lashing SPMT on trailer;
- Coupling of trailers and PPU;
- Understand importance and requirements of trailer path preparation;
- Set up and operate simple transport configurations K24ST;
- Perform LMRA;
- 10 rules for SPMT operation.

Level 2:

- Understand hydraulic suspension and schemes of K24ST;
- Set up and operate more complex transport configurations K24ST;
- Solve hydraulic malfunctions;
- Perform LMRA;
- 10 rules for SPMT operation.

VALIDITY CERTIFICATE:

Certificate of participation.

PRACTICAL INFO:

- Maximum number of participants: 6;
- Bring PPE and high visibility jacket.

CUSTOMIZED TRAINING & REGISTRATION

Thanks to our expertise and flexibility, we can offer you customized training courses. Contact us to discuss the full range of possibilities.

Further information and registration: **training.center@sarens.com**
Costs: price list available on request.

OUR EXPERIENCE AT YOUR SERVICE

Offering training to your employees means investing in your company's human capital. The Flemish and Walloon governments and the sectoral funds therefore encourage employers with support measures and incentives under certain conditions.

Registered training courses are eligible for:

- Training vouchers
- Flemish training leave
- Flemish training credit

Wim SCHEERS
Technical Trainer
M +32 478 997 428
Wim.Scheers@sarens.com

Laurent COCKHUYT
Technical Trainer
M +32 496 259 484
Laurent.Cockhuyt@sarens.be

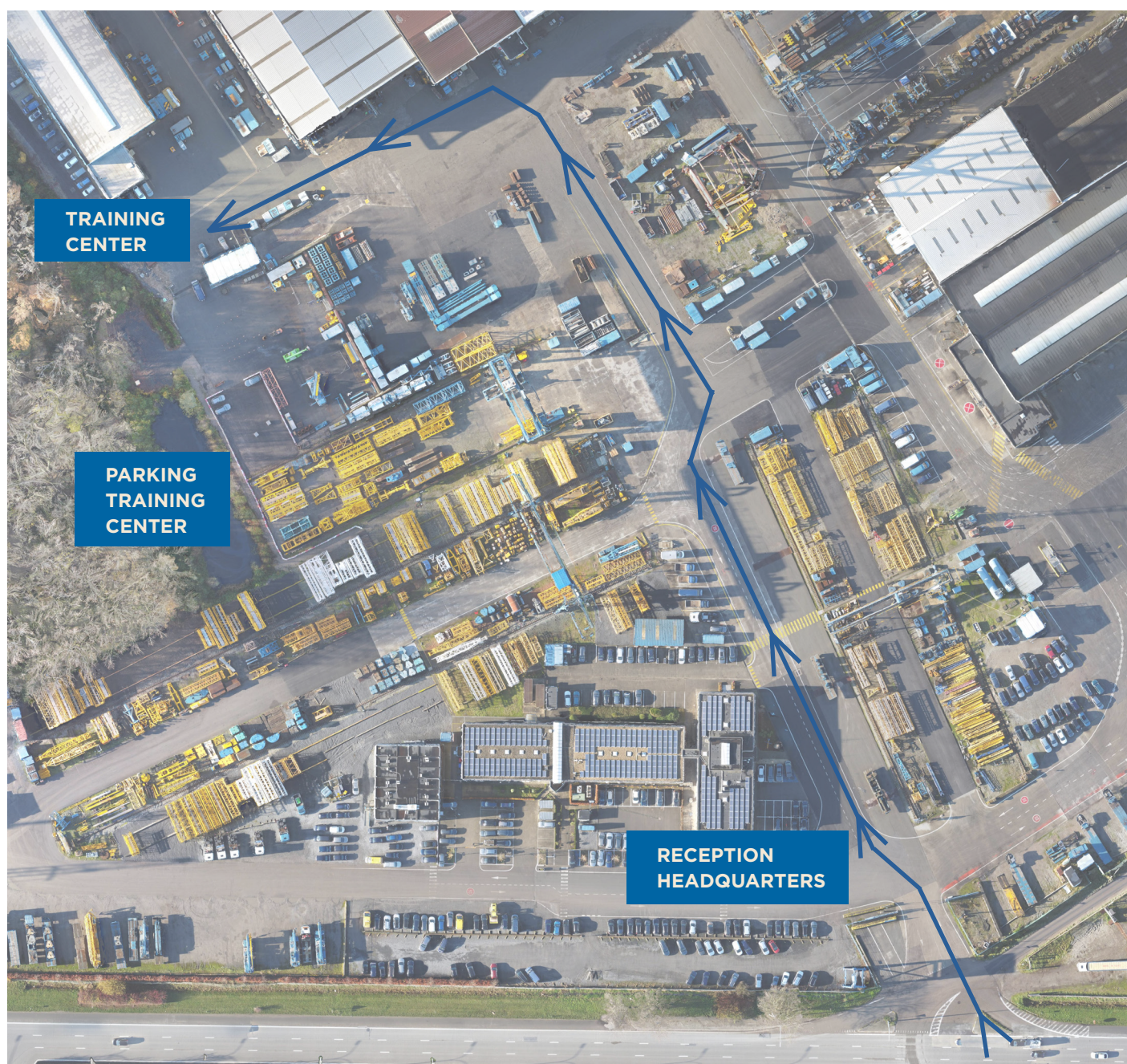
Melissa SILVERANS
Training Coordinator
T +32 52 31 84 24
Melissa.Silverans@sarens.com

Rani BROUILLARD
HR Coordinator
T +32 52 31 84 63
M +32 479 551 059
Rani.Brouillard@sarens.com

Line RIGO
RDTs Manager
T +32 52 31 84 45
M +32 478 997 445
Line.Rigo@sarens.com

LOCATION

Sarens NV
Autoweg 10
1861 Wolvertem





Sarens Headquarters
Autoweg 10
1861 Wolvertem - Belgium

T +32 (0) 52 319 319
F +32 (0) 52 319 329



info@sarens.com
www.sarens.com