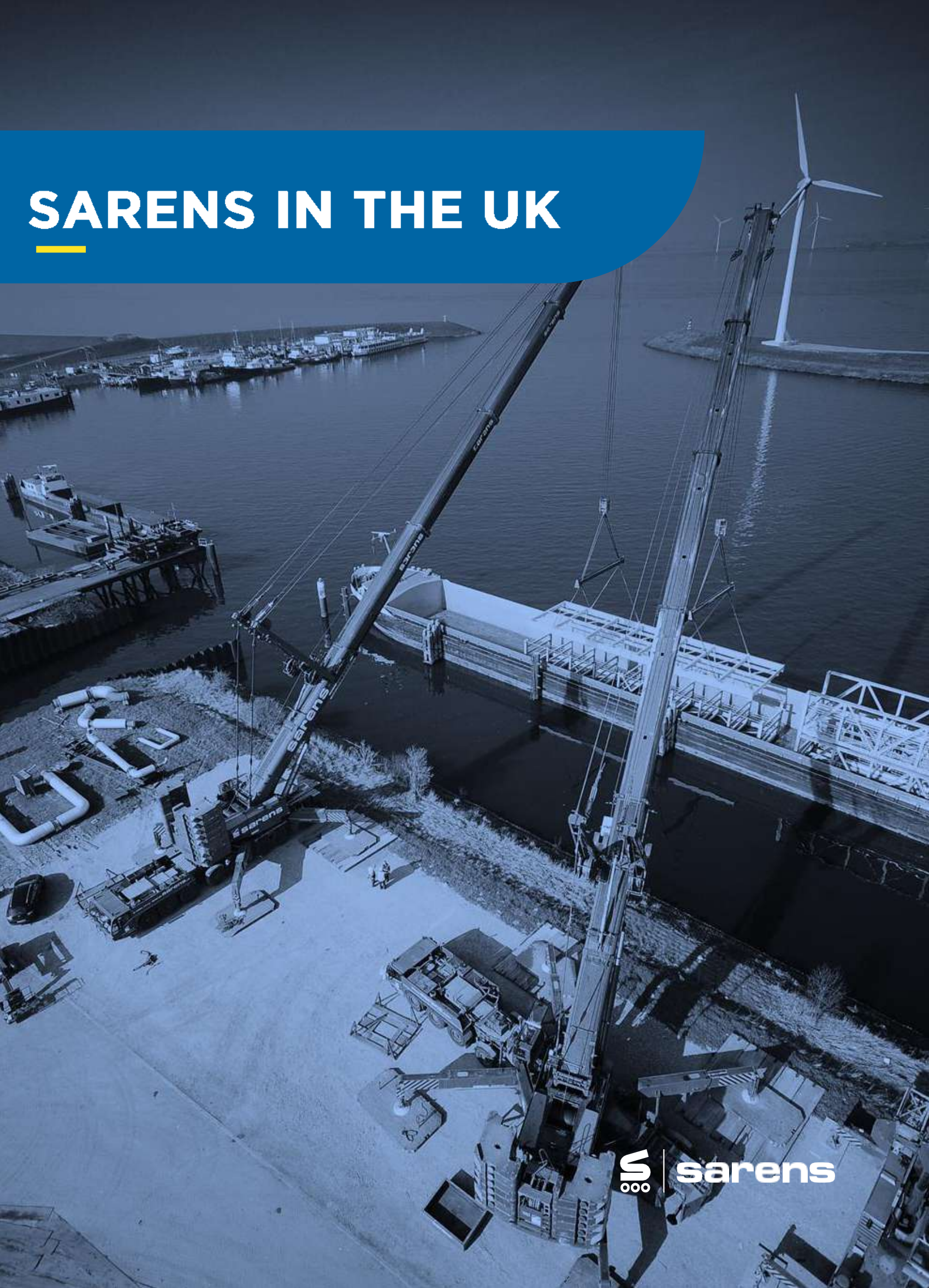


# SARENS IN THE UK



## OUR STORY HAS BEEN ONE OF CONTINUOUS GROWTH AND PROGRESSION FOR NEARLY 100 YEARS

Great grandfather Frans Sarens was a farmer who used a horse and cart for forestry works and the transport of trees. That is how it began, in the thirties, in Flanders, Belgium; one man and his twelve children, who started working with him as soon as they graduated from school.



During the next three decades horses and carts were replaced with trucks and engines. Sarens' solutions and equipment also evolved during this period to meet the changing needs of our clients.



In September 1955 Sarens was incorporated and the company began progressively investing in new equipment and technologies which meant the business grew steadily in Belgium during the 1960s



In the 1970s Sarens expanded its service offering to include barges and Self Propelled Modular Trailers (SPMTs). Sarens also began offering services in the UK.



Sarens has continually grown in the UK and now offers one of the largest and the most diverse fleet in the UK with mobile cranes from 60T to 1.200T, crawler cranes from 100T to 750T, SPMT's and the largest range of Straud Jacks in the UK.

Sarens launched in 2018 the largest crane in the world, the spectacular SGC-250. We name it "Big Carl" after our Director of Technical Solutions, Projects & Engineering. The crane's first assignment is at the nuclear station Hinkley Point C in the UK.



## THE QUALITY OF OUR PEOPLE IS THE CORNERSTONE OF OUR ABILITY TO SERVE OUR CLIENTS.

For decades, Sarens has been known for having one of the world's largest and most diversified fleet. However, it is our staff which allow us to provide a first class service around the world. Sarens provides continuous training and development for our staff.

Sarens has a first-class training centre where staff and clients are able to hone their skills and ensure consistently high standards in all areas of lifting operations. Becoming a qualified lifting professional at Sarens is only the start and for those who wish to progress their career, Sarens provide the necessary training they require in order to achieve their goals. As they develop and progress, our staff are eager to take ownership and we proudly create an environment that fosters their growth as leaders.

Training and development is key for a highly skilled, safe and competent workforce. Sarens also believe that encouraging staff to participate in physical activity is key in maintaining a healthy, happy, efficient, and engaged workforce.



## FOR SARENS, SAFETY IS PARAMOUNT

For Sarens, safety is paramount. We aim to provide a safe and healthy working environment for our employees, contractors and visitors. In fact, our goal is to have zero work accidents and incidents. Therefore, we're doing everything possible to prevent them from happening in the first place. The SHEQ Policy aims to ensure alignment to the Sarens mission and values, where 'Dedication to Safety' means ensuring that harm is not inflicted upon its employees, contractors, service providers, or the environment, Sarens assets, as well as members of the public affected by its operations, infrastructure and all operational activities within the scope of heavy lifting, special transport, assembly, disassembly and maintenance in industry, and infrastructure.

Sarens management and all employees are committed to well-being and protection of human life, environmental duty of care, protection of assets and customer satisfaction by applying our Plan-Do-Check-Act (PDCA) cycle and our Code of Conduct in all Sarens activities. Sarens has integrated safety, health, environment, and quality requirements into all activities; more specifically in the Sarens Project Management Procedure (SPM) and care for preventive maintenance so that decisions made ensure the consideration of economic development, environmental quality and social equity to continually improve performance and achieve stakeholder requirements.



## SARENS UK SHEQ SYSTEM

Sarens operates in the UK under the Sarens certified SHEQ Management system, which is in compliance with ISO 9001:2015, ISO 14001:2015, and OHSAS:18001:2007. This comprehensive quality system ensures that our company can deliver all project deliverables with a high level of efficiency and quality, and in line with all applicable legislative requirements.

Our robust SHEQ management system ensures all on-site work is carried out safely, in a controlled and logical manner – which has been the key to our success across a variety of projects.

## ACCREDITATIONS

- ISO 9001: 2015
- OHSAS 18001
- ISO 14001: 2015
- Construction line Gold
- Construction line Silver
- RISQS
- Achilles UVDB
- Achilles FPAL
- CHAS
- FORS Bronze



OUR PRODUCT RANGE



ALL TERRAIN MOBILES  
40T-300T



MOBILE TOWER CRANES  
4, 5, AND 6 AXLES



HEAVY TELESCOPIC MOBILES  
300T-1.000T



TELESCOPIC CRAWLERS  
100T



LATTICE BOOM MOBILES  
500T-1.200T



LATTICE BOOM  
CRAWLERS  
160T-750T

OUR PRODUCT RANGE



SPMTs



STRAND JACKS



JACKING



SKIDDING



SARENS GIANT CRANE  
SGC-250



BARGES

## OUR RENTAL BUSINESS PRESENCE

In the UK, Sarens, apart from performing some of the key projects, is strengthening our rental business presence for cranes ranging from 60T and above, based in both London and Middlesbrough. Sarens has the biggest fleet of cranes and transport trailers in the market, all of which are available for rent. Our cranes are readily available and give you the option of daily rental, contract lift, or a full turnkey heavy lift project solutions. Sarens will take care of everything: from maintenance, planning, certification, so you can perform your heavy lifting with state of the art equipment, ready to go.

### NEW OFFICE BLOCK, LONDON, UK

Sarens helped in the construction of a new office block in a tight London site. Lifting steel and materials for the façade, Sarens provided technical and engineering support for the temporary works for this project. Faced with locating the crane with one side over a basement it was essential that the supporting structures were calculated and designed precisely before specialist mats were placed to allow the lifts to take place.

Once the temporary structures had been designed, Sarens Technical Team worked closely with our Client to ensure the lifting operations were planned efficiently to maximise the productivity of the site.

As Sarens have a modern fleet of cranes many of our machines are Euro 6 compliant meaning we are able to work in central London.

### EQUIPMENT DESCRIPTION

Sarens lifted a TBM machine down a shaft for Thames Tideway and provided engineering support for this lift with an LTM1500. The site was extremely tight and required meticulous planning and preparation along with highly experienced and competent staff to ensure this job was completed safely, on time and budget.

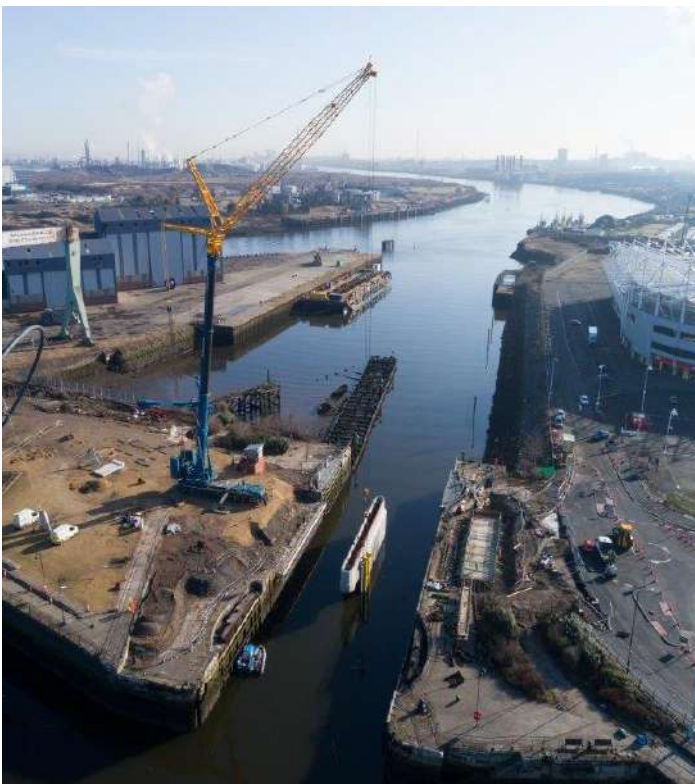
Our LTM1500 with a 50m boom was the perfect machine for the job, allowing our Client to lift a heavier load at a short radius and making the route to this central London site much easier.





## MIDDLESBROUGH, UK

Sarens gets involved with the design of any projects at an early stage. We have seen across the UK our benefits with the end clients, as the results are not only economical, but with reduced risks. Below project was a full turnkey project. We started with the removal of a swing bridge using our small mobile crane range to installing the new road bridge. Image below shows our LTM1500 installing the concrete abutments / piers. Sarens main value to the below project was assisting with the end client on the civil work needed. We didn't just look at our scope of works, but we also looked at the clients...



## EWELL BRIDGE, A12, UK

Sarens was originally tasked to remove a damaged bridge on the A12, London. The equipment used for this project was our ac700 (700Te mobile crane), Self-Propelled Modular Trailers (SPMTs) steel supports and Beams. During the design, Sarens had noticed that the Client was struggling with the specialist lifting equipment. As a Global Leader in the heavy lift market, we didn't let the client sit with this issue. So Sarens designed and fabricated a bespoke lifting device to support the damaged bridge accordingly. As most of the equipment was "in house" the cost was minimal.



## OUR MISSION IS TO BE THE GLOBAL LEADER AND MARKET REFERENCE IN CRANE RENTAL SERVICES, HEAVY LIFTING, AND ENGINEERED TRANSPORT

Sarens has been the market leader for over 60 years. Our success lies in our entrepreneurial spirit and our continued dedication to our job. However, taking heavy lifting and engineered transport seriously is for us not just a matter of DNA and a family tradition but, most importantly, a choice.

At Sarens, we will continue to build our future on the foundations of our rich past but we ensure our clients that we will always stay ahead of the game when it comes to heavy lifting and engineered transport. We will keep braking ground and securing that your project is delivered in the fastest, safest, and smartest way.

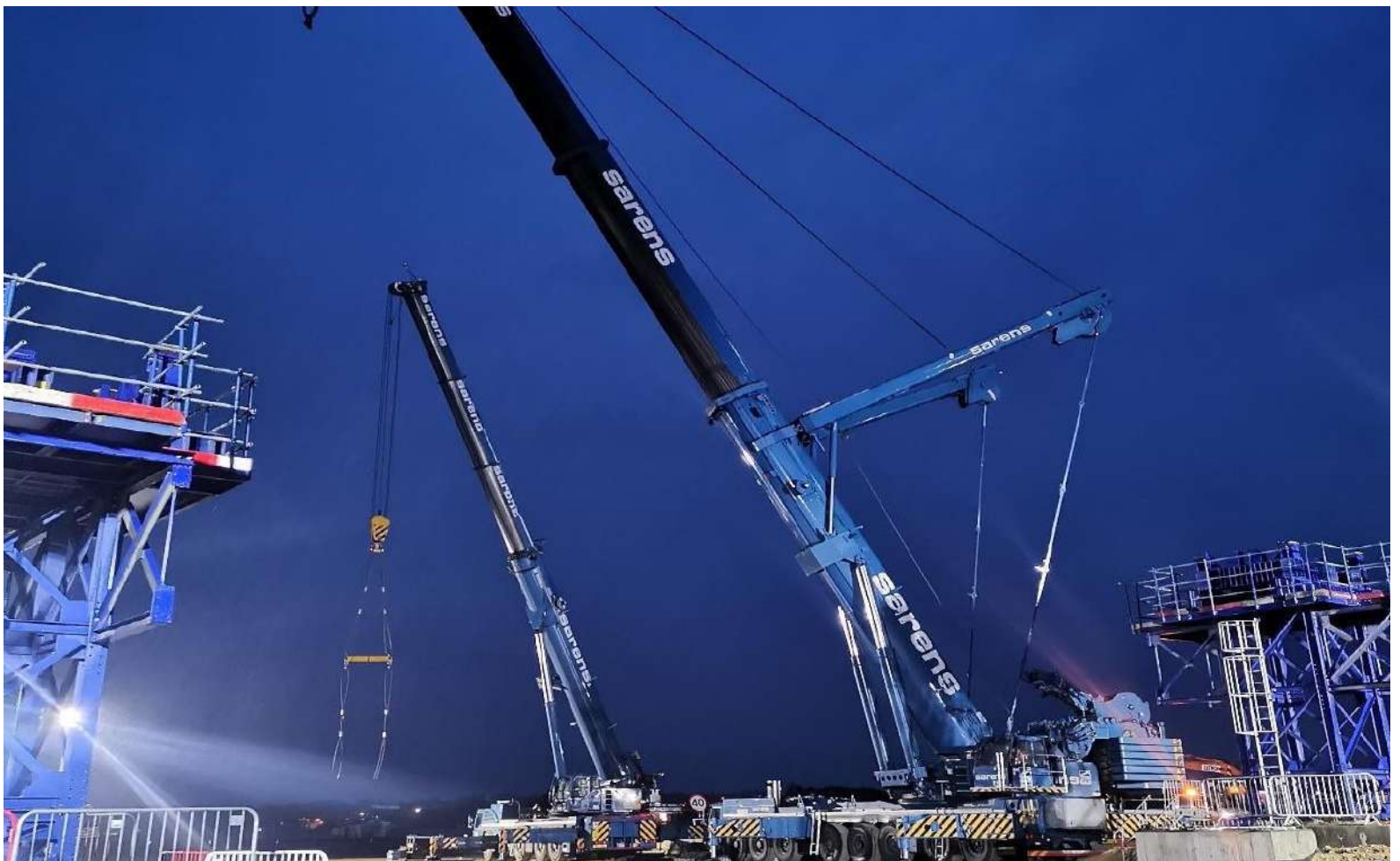
*Zeal  
for  
Excellence*

*Love  
for  
Tradition*

*Global  
Spirit*

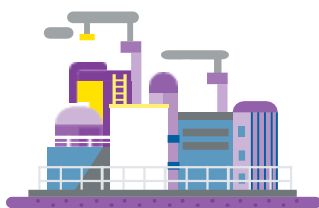
*Brilliant  
Solutions*

*Dedication  
to  
Safety*



# WE ARE POWERED BY KNOWLEDGE AND EXPERIENCED IN EVERY INDUSTRY WE SERVE.

Our work is based on a rigorous understanding of the industries we serve. Whether it's lifting steel on construction sites, transporting turbine rotors at a nuclear power plant, relocating a tunnel boring machine or providing engineered lift and transport solutions for accelerated bridge construction, we have the resources and the knowledge to provide innovative solutions for your next project. Sarens' field of expertise includes the following key markets.



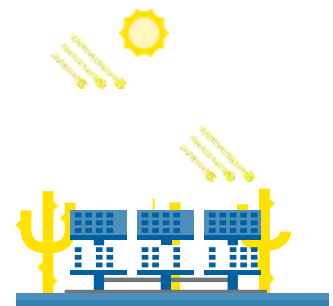
**GENERAL  
INDUSTRY**



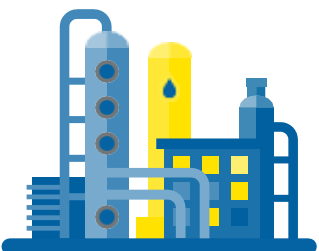
**CIVIL WORKS**



**ONSHORE &  
OFFSHORE WIND**



**SOLAR**



**OIL AND GAS**



**THERMAL AND  
NUCLEAR POWER  
PLANTS**



**OFFSHORE AND  
MODULAR YARDS**



**MINING**

# SARENS UK OFFICES

## **MIDDLESBROUGH**

### **HEAD OFFICE**

Booth House  
Riverside Park Road  
Middlesbrough  
TS2 1UT  
+44 1642 621 621

## **LONDON**

Codham Hall  
Great Warley  
Brentwood  
CM13 3JT  
+44 0277 285 045

## **HINKLEY POINT**

Commerce Way  
Highbridge  
TA9 4AW  
+44 1278 684 199

