



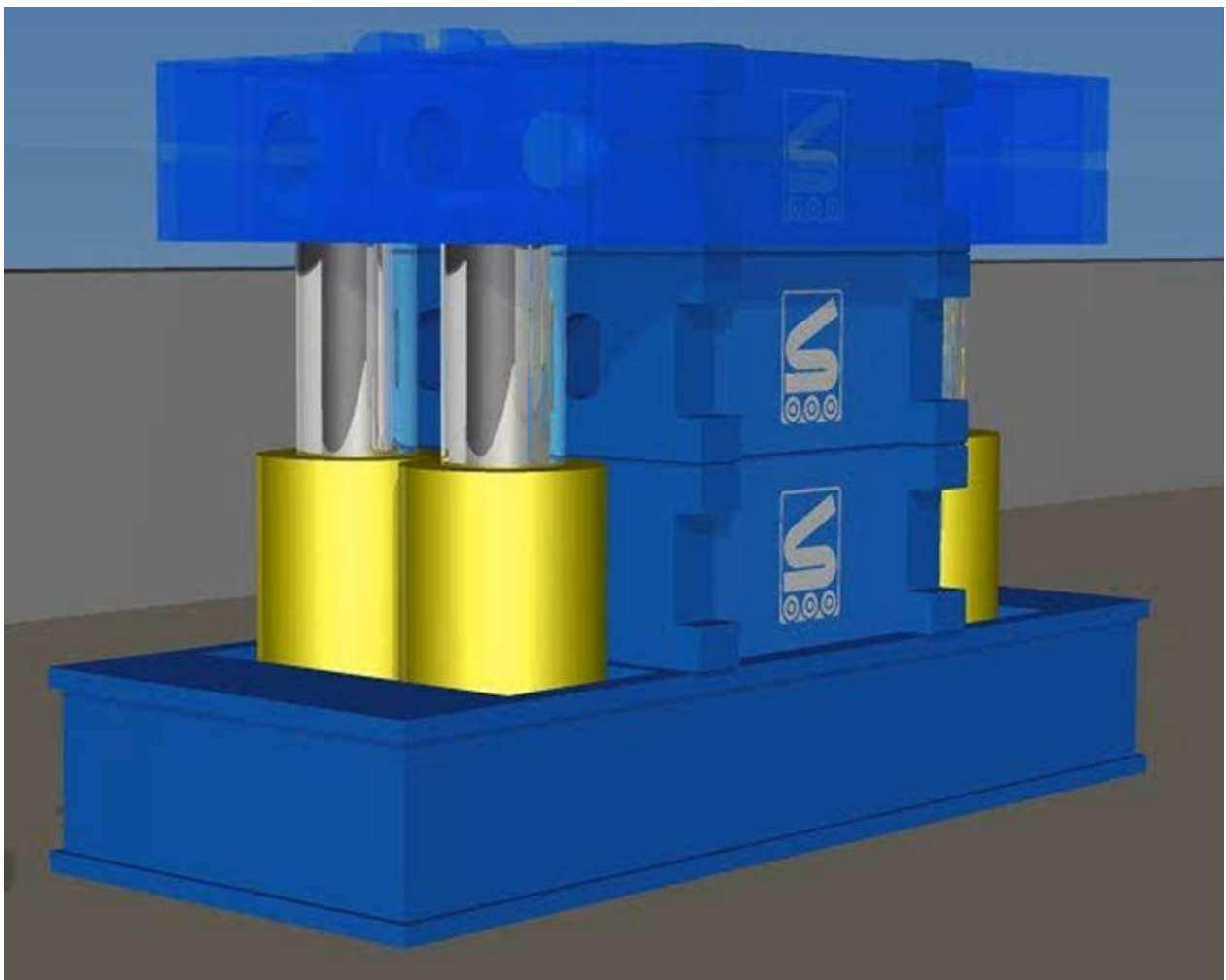
sarens

group

www.sarens.com

Climbing system CS5000

5000 ton



nothing too heavy, nothing too high





CS 5000

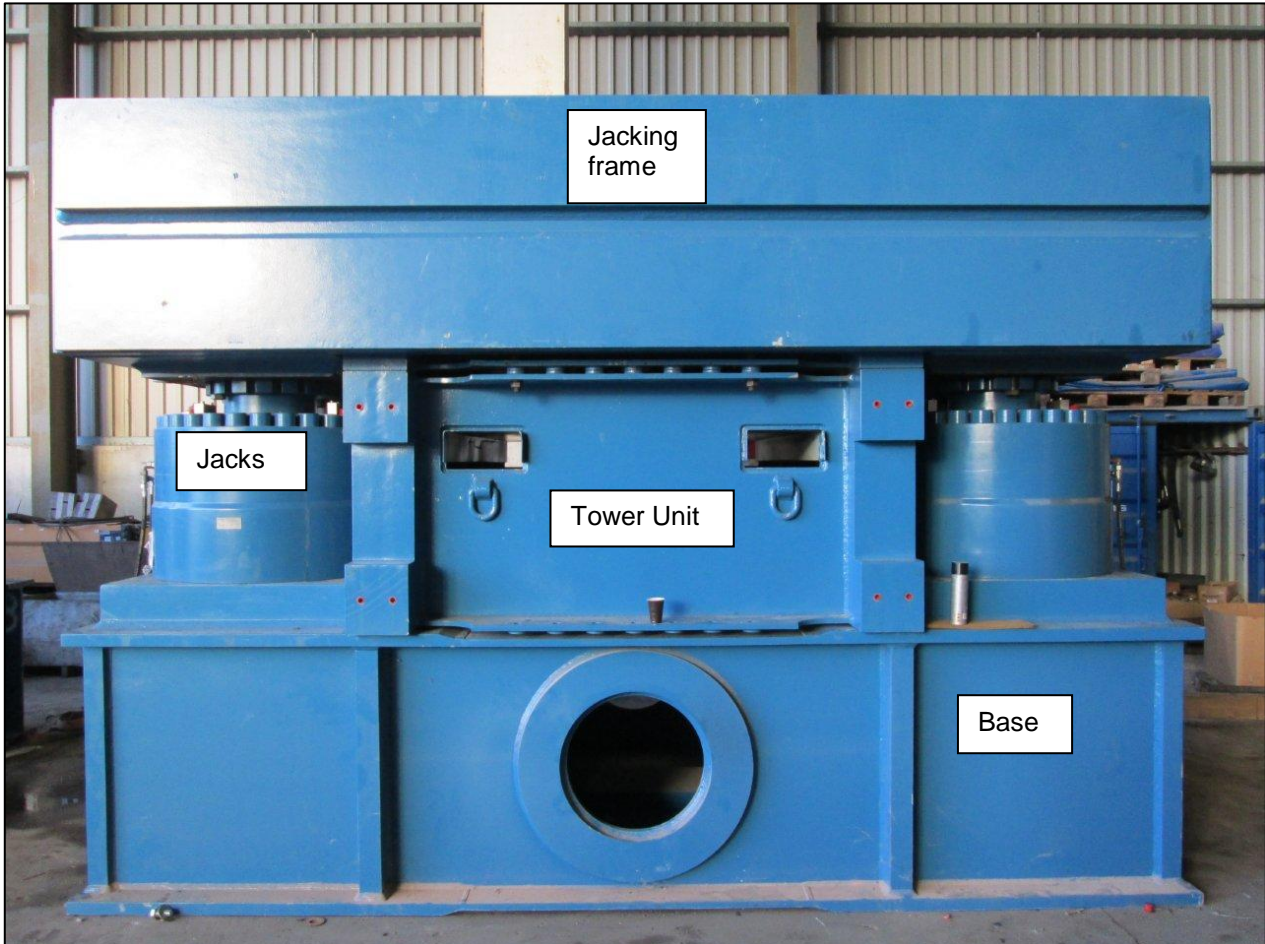
Introduction
Introduction

5000 TON

Einleitung
Inleiding

The recent past showed an increasing demand by the industry for heavier and higher jacking possibilities when it comes to jacking operations with modules, topsides,...

Sarens company motto is 'nothing too heavy, nothing too high' with reason, so to answer this, Sarens developed a new element in its range of climbing systems: the CS5000, with a staggering 5000t capacity per tower, up to 20m of jacking height.



Main Features

- All basic components of the climbing system are of containerized sizes and can be handled by standard fork truck during jacking operation
- The CS5000 requires very low starting height, thanks to a minimum base height of 3m.
- CS5000 is controlled from one single point by one operator
- The topside can be put in safe mode, for instance in case of hydraulic failure of one of the cylinders.



CS 5000

Operation
Fonctionnement

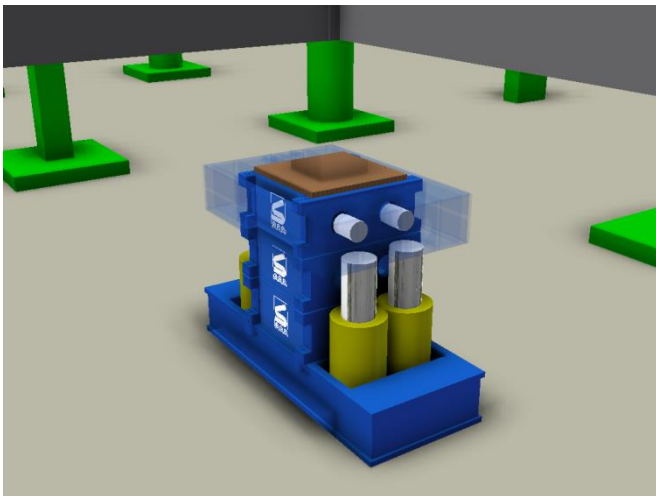
5000 TON

Betrieb
Werking

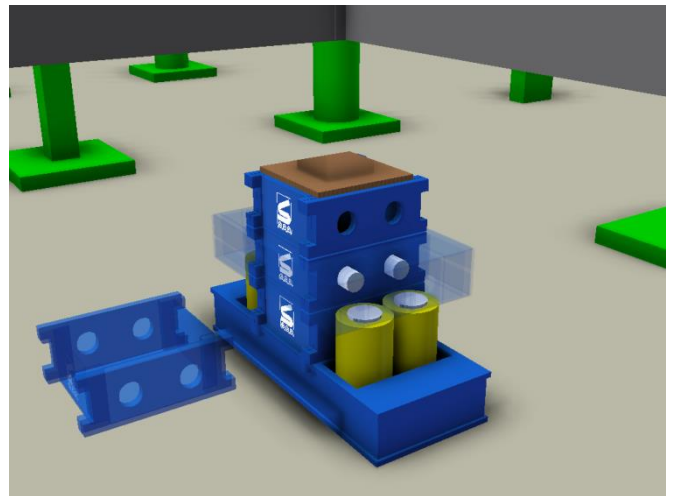
Description CS 5000

The CS 5000 was developed by Sarens, for the jacking of ultra-heavy structures and modules. The system has a modular set-up, with a capacity of 5000 Ton per unit. The climbing towers can be connected to each other hydraulically and electrically. This way it is possible to control the jacking operation from one point; the Central Computer. The number of climbing units that will be put in operation depends on the project specifications.

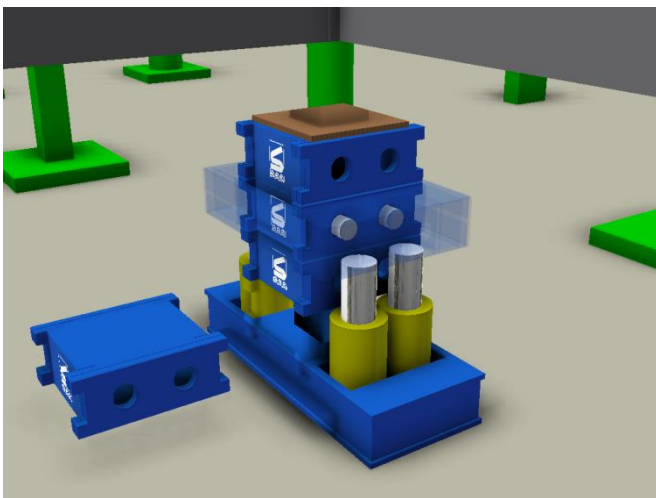
Climbing sequence:



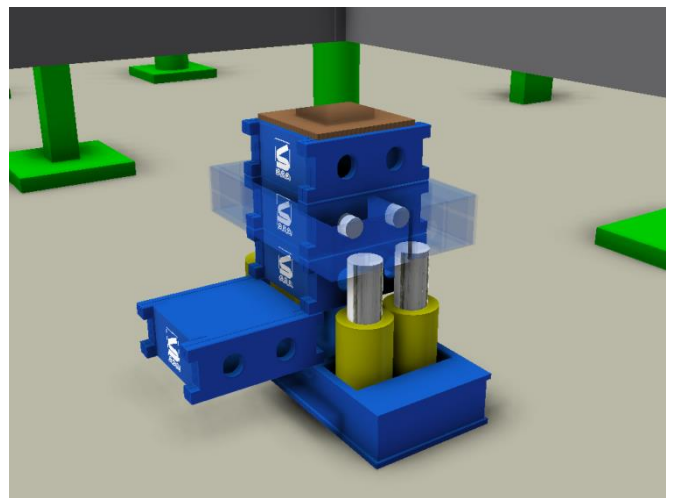
Step 1: unpin jacking frame and lower jacks



Step 2: pin jacking frame to lower element



Step 3: push up



Step 4: insert new tower element

Technical specifications (PRELIMINARY)

Number of units	Depends on project
Unit capacity	50000 kN/tower
Total length / width / height (m)	4.45 x 3.06 x 3 (minimum height)
Climbing element size (m)	2.55 x 2.2 x 1 (9 ton/element)
Load bearing surface	14.7m ²



CS 5000

Pictures
Photos

5000 TON

Bilder
Foto's



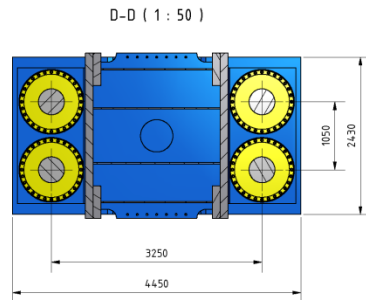
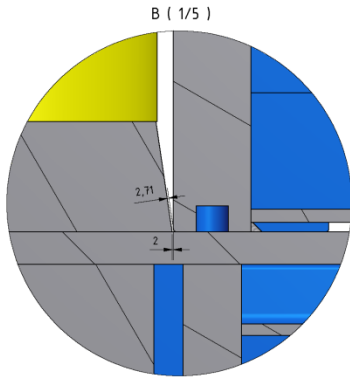
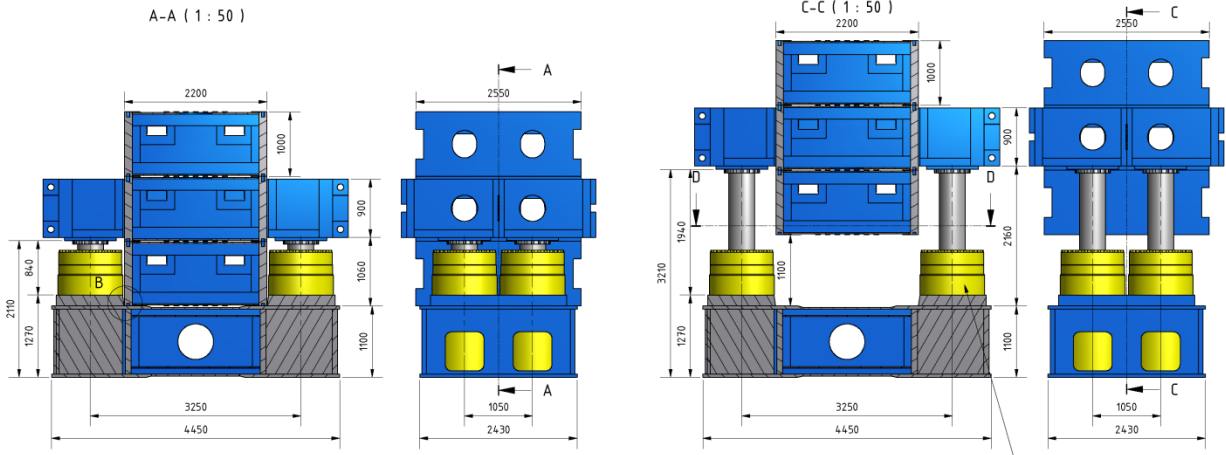


CS 5000

**Assembly
Assemblage**

5000 TON

**Montage
Montage**



REV	DATE	DESCRIPTION	K.Y.	B.S.
-	31/05/12	First Issue		

Client:

Copyright Sarens group. All rights reserved.

TYPE: Construction drawing

EQUIPMENT: Jack 5000T

TITLE: Assembly: base frame with jacks and tower elements

SCALE: 1/50 SITE:

PROJ: PROJECT: OWNER: SAR STATUS:

SIZE: A3 DOC No: Jack 5000T base frame with jacks.idw SHEET: 1

ITEM	QTY	MATERIAL	MASS
1	2	S690 QL	2054,319 kg
2	4	S690 QL	416,535 kg
3	4	S460 N	55,460 kg
4	2	S460 N	230,168 kg
5	2	S460 N	696,948 kg
6	28	S235 J2	0,431 kg
7	2	S490 N	47,031 kg
8	2	S235 J0	46,662 kg
9	2	S490 N	47,031 kg
10	4	Steel	4,397 kg

Total: 8166,970 kg

Lashing eye type APA
WLL 8t/each

Client:

Copyright Sarens group. All rights reserved.

TYPE: Construction drawing

EQUIPMENT: Jack 5000T

TITLE: Tower element

SCALE: NA SITE:

PROJ: PROJECT: OWNER: STATUS:

SIZE: A3 DOC No: Jack 5000T Tower element.idw SHEET: 2