

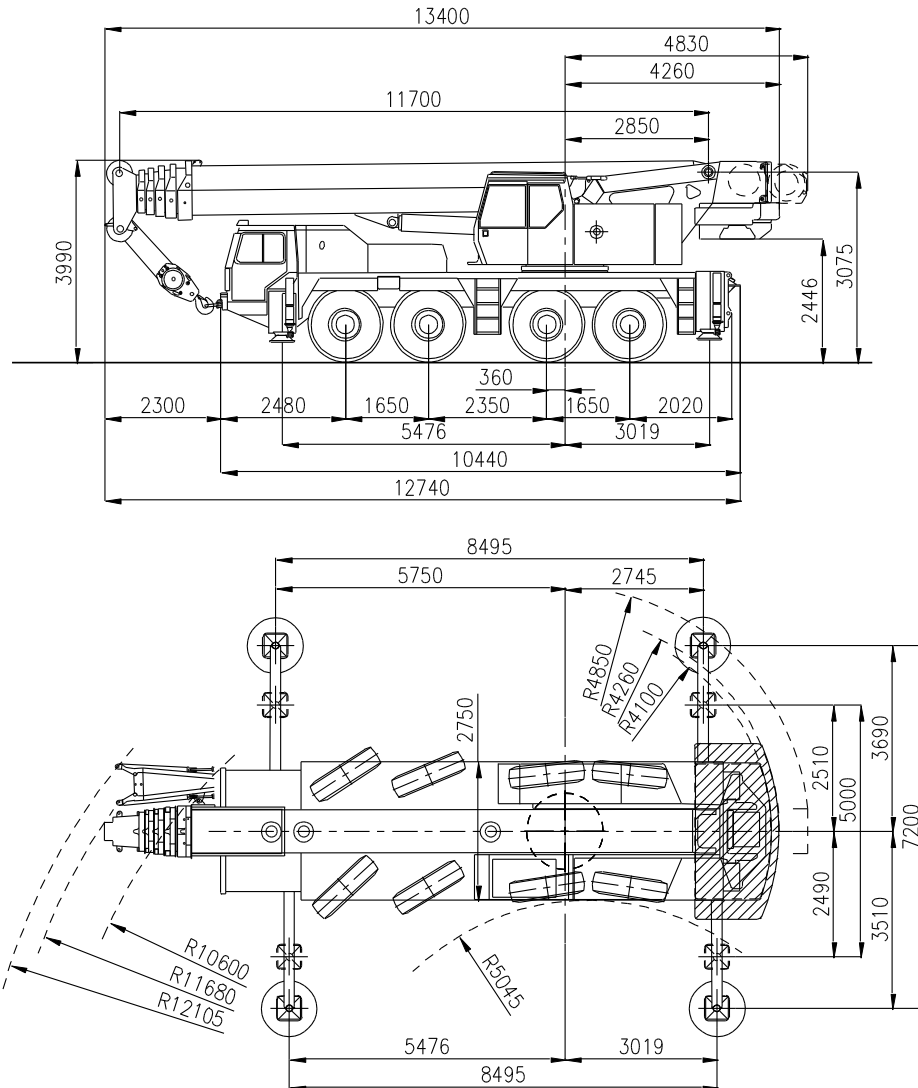


Sarens
group

www.sarens.com

LIEBHERR LTM 1090/2

90 TON



Axle load / Charge par essieu / Achslast / Aslast : 4 x 12 t (12 t)
 Total weight / Poids total / Gesamtgewicht / Totaal gewicht : 48 t (12 t)
 Tyres / Pneus / Bereifung / Banden : 14.00 R 25





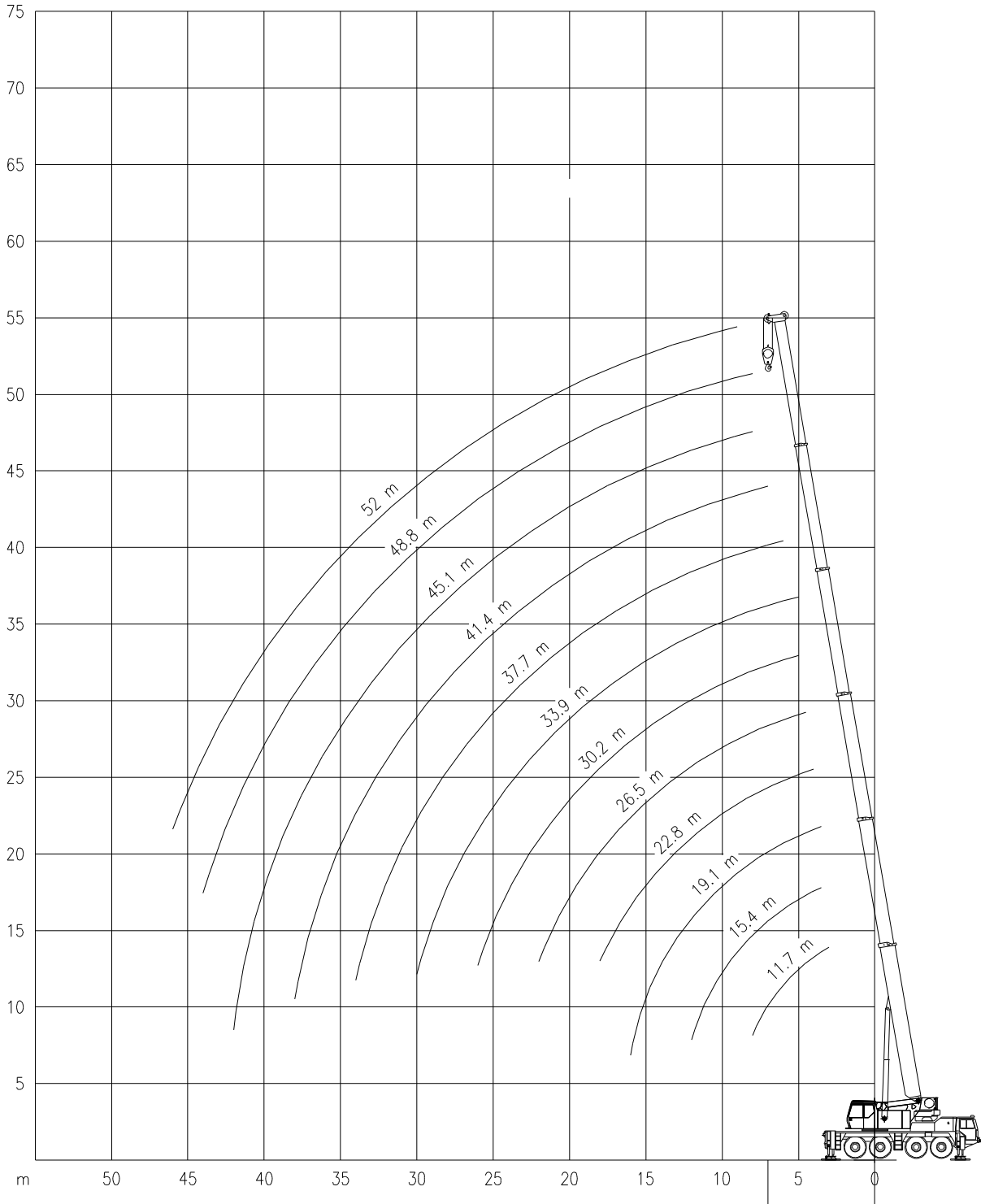
LIEBHERR LTM 1090/2

Working ranges
Portées

90 TON

Arbeitsbereiche
Werkbereich

T



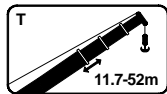


LIEBHERR LTM 1090/2

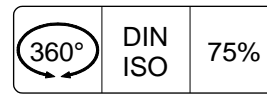
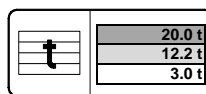
90 TON


Lifting capacities
Capacités


Tragfähigkeiten
Capaciteiten



T



	11.7 m	15.4 m	19.1 m	22.8 m	26.5 m	30.2 m	33.9 m	37.7 m	41.4 m	45.1 m	48.8 m	52.0 m
m	t	t	t	t	t	t	t	t	t	t	t	t
2.5	90.0*	-	-	-	-	-	-	-	-	-	-	-
3.0	82.0*	69.0	60.0	-	-	-	-	-	-	-	-	-
3.5	74.0*	66.0	56.0	48.5	-	-	-	-	-	-	-	-
4.0	66.0*	63.0	53.0	46.0	41.0	-	-	-	-	-	-	-
4.5	59.0*	59.0	50.0	43.5	39.0	33.5	29.0	-	-	-	-	-
5.0	49.5*	49.0	44.5	39.0	35.0	31.0	27.1	23.4	-	-	-	-
6.0	42.0*	41.5	40.5	35.0	31.5	28.3	25.1	22.1	19.1	-	-	-
7.0	36.0*	35.0	34.5	32.0	28.5	26.0	23.2	20.6	18.1	15.3	12.5	-
8.0	-	29.7	29.1	28.1	26.0	24.0	21.6	19.1	17.0	14.7	12.0	10.2
9.0	-	25.6	25.1	24.3	23.4	22.2	20.1	17.8	16.0	14.1	11.5	9.8
10.0	-	19.6	19.2	18.5	18.2	17.9	17.4	15.5	14.1	12.8	10.6	9.0
12.0	-	-	14.8	14.4	14.5	14.4	14.5	13.6	12.5	11.4	9.8	8.3
14.0	-	-	13.0	11.3	11.5	11.8	11.9	11.8	11.2	10.2	9.1	7.7
16.0	-	-	-	9.1	9.6	9.6	10.4	9.8	10.0	9.1	8.5	7.1
18.0	-	-	-	-	8.7	7.8	9.4	8.3	8.6	8.2	7.7	6.6
20.0	-	-	-	-	7.9	6.7	8.0	7.5	7.2	7.2	7.0	6.1
22.0	-	-	-	-	-	6.1	6.9	6.8	6.4	6.4	6.4	5.6
24.0	-	-	-	-	-	5.7	5.9	6.0	5.9	5.8	5.6	5.1
26.0	-	-	-	-	-	-	5.1	5.2	5.4	5.1	4.7	4.6
28.0	-	-	-	-	-	-	4.4	4.7	4.7	4.4	4.0	4.0
30.0	-	-	-	-	-	-	-	4.4	4.1	3.8	3.5	3.5
32.0	-	-	-	-	-	-	-	4.0	3.7	3.4	3.1	3.0
34.0	-	-	-	-	-	-	-	-	3.3	3.0	2.7	2.6
36.0	-	-	-	-	-	-	-	-	3.0	2.7	2.3	2.3
38.0	-	-	-	-	-	-	-	-	-	2.4	2.0	1.9
40.0	-	-	-	-	-	-	-	-	-	2.1	1.7	1.7
44.0	-	-	-	-	-	-	-	-	-	-	1.4	1.4
46.0	-	-	-	-	-	-	-	-	-	-	-	1.2

	11.7 m	15.4 m	19.1 m	22.8 m	26.5 m	30.2 m	33.9 m	37.7 m	41.4 m	45.1 m	48.8 m	52.0 m
m	t	t	t	t	t	t	t	t	t	t	t	t
2.5	80.0*	-	-	-	-	-	-	-	-	-	-	-
3.0	73.0*	69.0	60.0	-	-	-	-	-	-	-	-	-
3.5	65.0*	65.0	56.0	48.5	-	-	-	-	-	-	-	-
4.0	58.0*	55.0	48.0	42.5	39.0	-	-	-	-	-	-	-
4.5	52.0*	46.5	41.0	36.5	34.0	32.0	29.0	-	-	-	-	-
5.0	39.5*	35.0	31.5	28.3	26.6	25.4	24.6	23.4	-	-	-	-
6.0	30.5*	27.8	25.0	22.6	21.4	20.7	21.2	19.4	19.1	-	-	-
7.0	23.5*	23.4	20.6	18.5	18.6	17.2	18.7	16.6	16.3	13.7	10.6	-
8.0	-	20.1	19.1	15.4	17.1	14.9	16.1	15.5	14.0	13.7	10.6	8.8
9.0	-	16.7	17.3	13.9	15.7	13.7	14.0	13.7	12.2	12.0	10.6	8.8
10.0	-	12.2	12.7	12.1	12.2	11.9	10.8	10.9	10.7	10.0	9.3	8.8
12.0	-	-	9.8	10.4	9.6	9.5	9.4	9.2	8.6	8.0	7.3	7.1
14.0	-	-	7.7	8.2	7.6	8.1	7.9	7.4	6.9	6.4	5.8	5.6
16.0	-	-	-	6.7	6.4	6.7	6.3	6.0	5.5	5.0	4.6	4.5
18.0	-	-	-	-	5.5	5.4	5.1	4.8	4.3	3.9	3.6	3.5
20.0	-	-	-	-	4.5	4.4	4.1	3.9	3.5	3.1	2.8	2.7
22.0	-	-	-	-	-	3.8	3.4	3.2	2.8	2.4	2.1	2.1
24.0	-	-	-	-	-	3.2	2.9	2.6	2.3	1.9	1.6	1.5
26.0	-	-	-	-	-	-	2.4	2.2	1.8	1.5	-	-
28.0	-	-	-	-	-	-	2.0	1.8	1.4	-	-	-
30.0	-	-	-	-	-	-	-	1.5	1.1	-	-	-
32.0	-	-	-	-	-	-	-	1.2	-	-	-	-

*Over rear / En arrière / Nach hinten / Over achterzijde

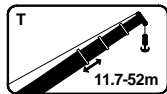


LIEBHERR LTM 1090/2

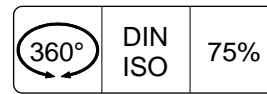
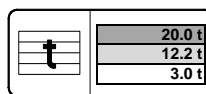
90 TON


Lifting capacities
Capacités


Tragfähigkeiten
Capaciteiten



T



	11.7 m	15.4 m	19.1 m	22.8 m	26.5 m	30.2 m	33.9 m	37.7 m	41.4 m	45.1 m	48.8 m	52.0 m
m	t	t	t	t	t	t	t	t	t	t	t	t
3.0	72.0	-	-	-	-	-	-	-	-	-	-	-
3.5	65.0	64.0	60.0	-	-	-	-	-	-	-	-	-
4.0	59.0	58.0	56.0	48.5	-	-	-	-	-	-	-	-
4.5	54.0	53.0	53.0	46.0	41.0	-	-	-	-	-	-	-
5.0	49.5	49.0	46.0	41.5	39.0	33.5	29.0	-	-	-	-	-
6.0	41.0	40.0	36.0	33.0	31.0	29.7	27.1	23.4	-	-	-	-
7.0	33.5	32.0	29.4	26.9	25.6	24.7	24.1	22.1	19.1	-	-	-
8.0	27.4	26.8	24.5	22.4	21.4	20.9	20.5	19.8	18.1	15.3	12.5	-
9.0	-	22.2	20.8	19.0	18.3	17.9	18.2	17.2	17.0	14.7	12.0	10.2
10.0	-	19.9	17.9	16.3	15.8	15.5	16.9	15.0	15.1	14.1	11.5	9.8
12.0	-	14.9	15.4	12.3	13.7	11.9	13.5	12.9	11.9	11.8	10.6	9.0
14.0	-	-	12.1	10.8	12.0	10.4	10.9	10.8	9.9	10.1	9.7	8.3
16.0	-	-	9.8	9.7	9.7	9.2	9.0	9.0	9.0	8.6	8.0	7.7
18.0	-	-	-	8.6	8.0	8.2	7.5	7.9	7.7	7.2	6.7	6.5
20.0	-	-	-	-	6.7	6.9	6.7	6.9	6.4	6.0	5.6	5.5
22.0	-	-	-	-	5.6	6.0	6.0	5.8	5.3	4.9	4.6	4.5
24.0	-	-	-	-	-	5.4	5.1	4.9	4.4	4.1	3.8	3.7
26.0	-	-	-	-	-	4.7	4.4	4.1	3.8	3.4	3.1	3.1
28.0	-	-	-	-	-	-	3.8	3.6	3.2	2.9	2.6	2.5
30.0	-	-	-	-	-	-	3.4	3.1	2.8	2.4	2.1	2.1
32.0	-	-	-	-	-	-	-	2.8	2.4	2.0	1.7	1.7
34.0	-	-	-	-	-	-	-	2.4	2.0	1.7	1.4	1.3
36.0	-	-	-	-	-	-	-	-	1.8	1.4	1.1	1.0
38.0	-	-	-	-	-	-	-	-	1.5	1.2	-	-

	11.7 m	15.4 m	19.1 m	22.8 m	26.5 m	30.2 m	33.9 m	37.7 m	41.4 m	45.1 m	48.8 m	52.0 m
m	t	t	t	t	t	t	t	t	t	t	t	t
3.0	68.0	-	-	-	-	-	-	-	-	-	-	-
3.5	55.0	46.5	39.5	-	-	-	-	-	-	-	-	-
4.0	44.0	38.0	32.5	28.4	-	-	-	-	-	-	-	-
4.5	36.0	31.5	28.4	24.0	26.1	-	-	-	-	-	-	-
5.0	30.5	28.9	27.0	20.6	23.2	21.3	19.6	-	-	-	-	-
6.0	22.8	22.1	21.2	18.7	18.4	17.7	15.8	15.2	-	-	-	-
7.0	17.8	17.6	17.0	16.9	15.0	14.6	14.3	13.4	12.5	-	-	-
8.0	13.8	14.4	14.1	14.1	12.7	12.2	12.1	11.4	10.6	9.8	8.9	-
9.0	-	12.0	11.8	11.9	11.4	11.1	10.4	9.8	9.1	8.3	7.6	7.3
10.0	-	10.0	10.1	10.3	9.8	9.6	9.0	8.5	7.8	7.2	6.5	6.3
12.0	-	7.0	7.5	7.8	7.5	7.3	6.9	6.5	5.9	5.4	4.8	4.6
14.0	-	-	5.6	6.0	5.8	5.7	5.3	5.0	4.5	4.0	3.5	3.4
16.0	-	-	4.2	4.5	4.4	4.4	4.0	3.8	3.3	2.9	2.5	2.4
18.0	-	-	-	3.6	3.4	3.4	3.1	2.9	2.5	2.0	-	-
20.0	-	-	-	-	2.7	2.7	2.4	2.2	1.8	-	-	-
22.0	-	-	-	-	2.2	2.1	1.9	1.6	-	-	-	-
24.0	-	-	-	-	-	1.7	-	-	-	-	-	-
26.0	-	-	-	-	-	1.3	-	-	-	-	-	-



LIEBHERR LTM 1090/2

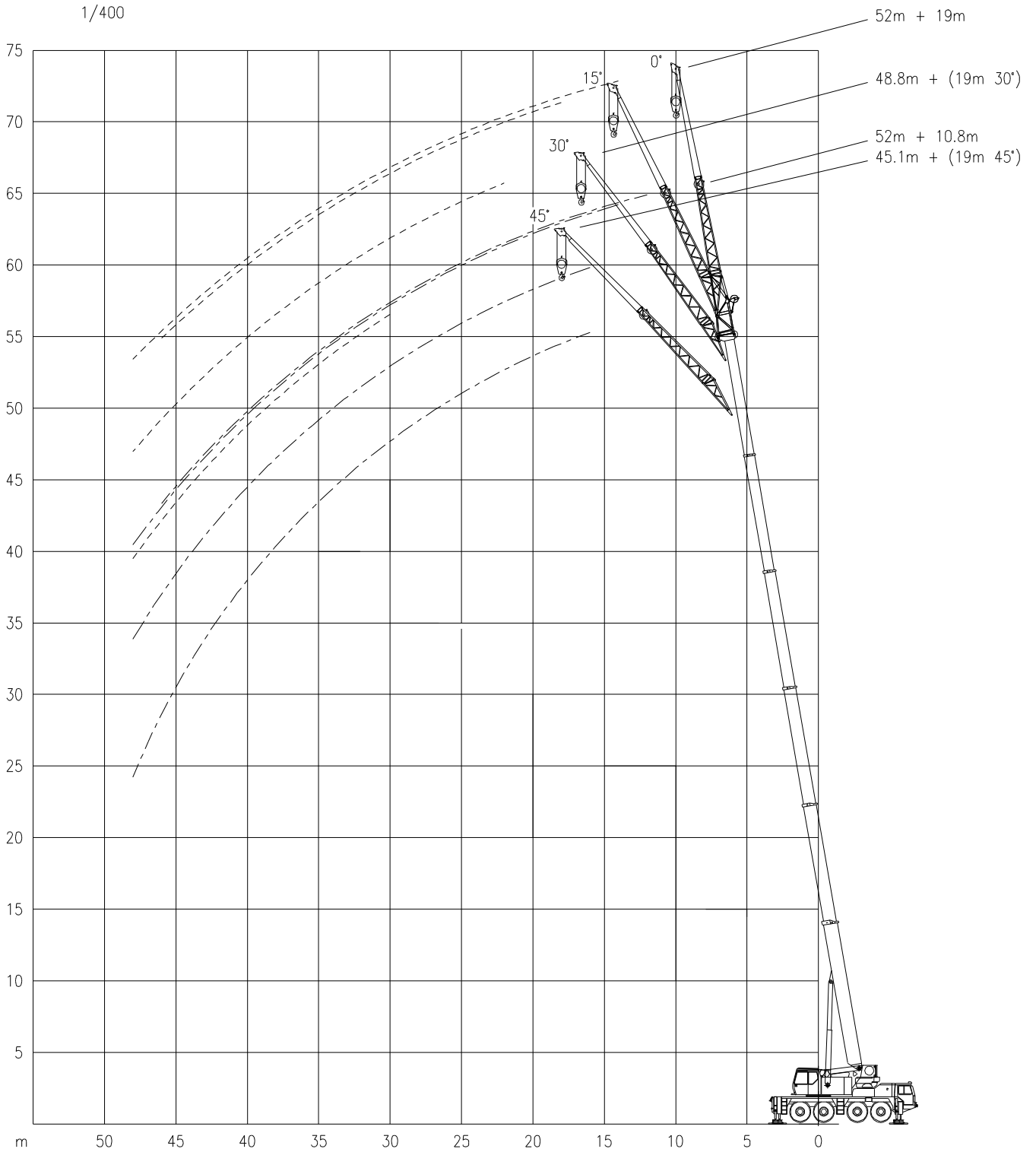
Working ranges
Portées

90 TON

Arbeitsbereiche
Werkbereich

TK

1/400



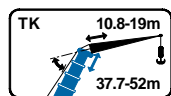
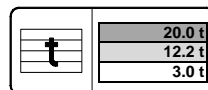


LIEBHERR LTM 1090/2

90 TON

Lifting capacities
Capacités

Tragfähigkeiten
Capacités

**TK**

m	37.7 m								41.4 m								45.1 m			
	10.8 m				19.0 m				10.8 m				19.0 m				10.8 m			
	0°	15°	30°	45°	0°	15°	30°	45°	0°	15°	30°	45°	0°	15°	30°	45°	0°	15°	30°	45°
8.0	10.2	-	-	-	-	-	-	-	-	-	-	-	-	-	-	-	-	-	-	-
9.0	10.0	-	-	-	4.2	-	-	-	8.3	-	-	-	-	-	-	-	-	-	-	-
10.0	9.8	-	-	-	4.2	-	-	-	8.2	-	-	-	3.9	-	-	-	7.1	-	-	-
12.0	9.5	7.1	-	-	4.1	-	-	-	8.1	6.1	-	-	3.9	-	-	-	7.0	-	-	-
14.0	9.1	6.4	4.4	-	4.0	-	-	-	7.9	5.6	3.7	-	3.8	-	-	-	6.8	4.7	-	-
16.0	8.8	5.9	4.1	3.2	3.9	3.3	-	-	7.8	5.1	3.5	2.7	3.7	3.2	-	-	6.7	4.4	3.0	2.2
18.0	8.5	5.4	3.9	3.1	3.8	3.2	-	-	7.6	4.7	3.3	2.6	3.7	3.1	-	-	6.2	4.1	2.8	2.2
20.0	7.6	5.0	3.7	3.0	3.7	3.1	2.7	-	6.9	4.3	3.1	2.5	3.6	3.0	2.4	-	5.7	3.8	2.7	2.1
22.0	6.8	4.6	3.5	2.9	3.6	3.1	2.6	2.0	6.2	4.0	3.0	2.4	3.5	3.0	2.3	-	5.3	3.5	2.5	2.0
24.0	5.9	4.3	3.3	2.8	3.5	3.0	2.5	1.9	5.6	3.8	2.8	2.4	3.4	2.9	2.2	1.6	4.9	3.3	2.4	2.0
26.0	4.8	4.0	3.1	2.7	3.4	2.9	2.3	1.8	5.0	3.5	2.7	2.3	3.3	2.8	2.0	1.5	4.6	3.1	2.3	1.9
28.0	4.0	3.8	3.0	2.6	3.3	2.9	2.2	1.7	4.2	3.3	2.6	2.3	3.2	2.7	2.0	1.5	4.2	2.9	2.2	1.8
30.0	3.5	3.5	2.9	2.6	3.2	2.8	2.1	1.7	3.6	3.1	2.5	2.2	3.1	2.6	1.9	1.4	3.6	2.7	2.1	1.8
32.0	3.0	3.2	2.8	2.5	3.1	2.7	2.0	1.6	3.1	2.9	2.4	2.2	3.0	2.4	1.8	1.3	3.2	2.6	2.1	1.8
34.0	2.7	2.8	2.7	2.4	2.9	2.5	2.0	1.5	2.8	2.8	2.4	2.1	3.0	2.3	1.7	1.2	2.9	2.4	2.0	1.7
36.0	2.6	2.4	2.5	2.3	2.5	2.4	1.9	1.5	2.7	2.5	2.3	2.1	2.6	2.2	1.6	1.1	2.8	2.3	1.9	1.7
38.0	2.5	2.2	2.1	2.2	2.2	2.3	1.8	1.4	2.6	2.2	2.2	2.1	2.3	2.1	1.5	1.1	2.5	2.2	1.8	1.7
40.0	2.3	2.1	1.9	1.8	1.9	2.2	1.7	1.3	2.5	2.1	1.9	2.0	2.0	2.0	1.5	1.0	2.2	2.0	1.8	1.6
42.0	2.2	2.0	1.9	1.7	1.7	1.9	1.7	1.3	2.2	2.1	1.9	1.7	1.7	1.9	1.4	1.0	1.9	1.9	1.7	1.6
44.0	2.1	1.9	1.8	-	1.6	1.6	1.6	1.2	1.9	2.0	1.8	1.7	1.6	1.7	1.3	1.0	1.6	1.8	1.6	1.5
46.0	-	-	-	-	1.5	1.3	1.4	1.1	1.6	1.7	1.7	1.6	1.6	1.4	1.2	0.9	1.4	1.5	1.5	1.4
48.0	-	-	-	-	1.4	1.2	1.1	1.0	1.4	1.5	1.5	-	1.5	1.2	1.1	0.9	1.1	1.2	1.3	1.2
50.0	-	-	-	-	1.4	1.2	1.0	-	-	-	-	-	1.4	1.2	1.1	0.9	0.9	1.0	1.0	-
54.0	-	-	-	-	1.3	1.1	0.9	-	-	-	-	-	1.0	1.1	1.0	-	-	-	-	-
56.0	-	-	-	-	(52m)	(52m)	(52m)	-	-	-	-	-	0.9	0.9	-	-	-	-	-	-

m	45.1 m				48.8 m								52.0 m							
	19.0 m				10.8 m				19.0 m				10.8 m				19.0 m			
	0°	15°	30°	45°	0°	15°	30°	45°	0°	15°	30°	45°	0°	15°	30°	45°	0°	15°	30°	45°
10.0	-	-	-	-	-	-	-	-	-	-	-	-	-	-	-	-	-	-	-	-
12.0	3.4	-	-	-	5.6	-	-	-	3.0	-	-	-	4.9	-	-	-	-	-	-	-
14.0	3.3	-	-	-	5.4	3.6	-	-	3.0	-	-	-	4.6	3.0	-	-	2.6	-	-	-
16.0	3.3	-	-	-	5.1	3.4	2.6	-	2.9	-	-	-	4.3	2.8	2.0	-	2.5	-	-	-
18.0	3.2	2.8	-	-	4.9	3.2	2.4	1.8	2.8	2.3	-	-	4.0	2.7	1.9	-	2.5	1.8	-	-
20.0	3.2	2.7	-	-	4.5	3.1	2.3	1.8	2.8	2.2	-	-	3.7	2.6	1.8	-	2.4	1.7	-	-
22.0	3.1	2.6	1.8	-	4.2	3.0	2.2	1.7	2.7	2.1	1.5	-	3.5	2.4	1.7	-	2.4	1.6	-	-
24.0	3.0	2.5	1.7	-	3.9	2.8	2.1	1.6	2.7	2.0	1.5	-	3.3	2.3	1.6	-	2.3	1.6	-	-
26.0	3.0	2.4	1.6	-	3.6	2.7	2.0	1.6	2.6	1.9	1.4	-	3.1	2.2	1.5	-	2.2	1.5	-	-
28.0	2.9	2.3	1.6	-	3.4	2.6	1.9	1.5	2.5	1.8	1.3	-	2.9	2.1	1.4	-	2.1	1.4	-	-
30.0	2.9	2.2	1.5	1.1	3.2	2.4	1.8	1.5	2.4	1.7	1.3	-	2.7	2.0	1.3	-	2.0	1.4	-	-
32.0	2.8	2.1	1.4	1.1	3.1	2.3	1.8	1.4	2.3	1.7	1.2	-	2.6	1.8	1.3	-	1.9	1.3	-	-
34.0	2.7	1.9	1.4	1.1	2.8	2.2	1.7	1.4	2.2	1.6	1.1	-	2.4	1.7	1.2	-	1.8	1.3	-	-
36.0	2.5	1.8	1.3	1.0	2.5	2.1	1.6	1.4	2.1	1.6	1.1	-	2.3	1.6	1.1	-	1.7	1.2	-	-
38.0	2.3	1.7	1.3	1.0	2.1	2.0	1.6	1.3	2.0	1.5	1.0	-	2.0	1.5	1.1	-	1.6	1.1	-	-
40.0	2.0	1.6	1.2	0.9	1.8	1.9	1.5	1.3	1.9	1.4	1.0	-	1.7	1.4	1.0	-	1.5	1.1	-	-
42.0	1.8	1.5	1.2	0.9	1.5	1.7	1.4	1.3	1.7	1.3	1.0	-	1.4	1.3	1.0	-	1.4	1.0	-	-
44.0	1.7	1.4	1.1	0.9	1.3	1.4	1.4	1.3	1.5	1.3	0.9	-	1.2	1.2	0.9	-	1.4	0.9	-	-
46.0	1.6	1.4	1.1	0.8	1.0	1.1	1.2	1.2	1.2	1.2	0.9	-	0.9	1.1	0.9	-	1.1	0.8	-	-
48.0	1.4	1.2	1.0	0.8	0.8	0.9	0.9	1.0	1.0	1.1	0.8	-	-	0.8	0.8	-	0.9	-	-	-
50.0	1.2	1.2	1.0	-	-	-	-	-	0.8	1.0	-	-	-	-	-	-	-	-	-	-
54.0	0.8	0.9	0.8	-	-	-	-	-	-	0.8	-	-	-	-	-	-	-	-	-	-

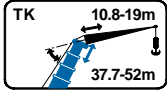


LIEBHERR LTM 1090/2

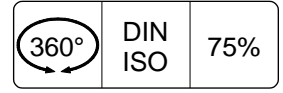
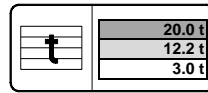
90 TON

Lifting capacities
Capacités

Tragfähigkeiten
Capacités



TK



m	37.7 m								41.4 m								45.1 m			
	10.8 m				19.0 m				10.8 m				19.0 m				10.8 m			
	0°	15°	30°	45°	0°	15°	30°	45°	0°	15°	30°	45°	0°	15°	30°	45°	0°	15°	30°	45°
8.0	10.2	-	-	-	-	-	-	-	-	-	-	-	-	-	-	-	-	-	-	-
9.0	10.0	-	-	-	4.2	-	-	-	8.3	-	-	-	-	-	-	-	-	-	-	-
10.0	9.8	-	-	-	4.2	-	-	-	8.2	-	-	-	3.9	-	-	-	-	7.1	-	-
12.0	9.5	7.1	-	-	4.1	-	-	-	8.1	6.1	-	-	3.9	-	-	-	-	7.0	-	-
14.0	9.1	6.4	4.4	-	4.0	-	-	-	7.9	5.6	3.7	-	3.8	-	-	-	-	6.8	4.7	-
16.0	8.7	5.9	4.1	3.2	3.9	3.3	-	-	7.8	5.1	3.5	2.7	3.7	3.2	-	-	-	6.7	4.4	3.0
18.0	7.2	5.4	3.9	3.1	3.8	3.2	-	-	7.2	4.7	3.3	2.6	3.7	3.1	-	-	-	6.2	4.1	2.8
20.0	6.0	5.0	3.7	3.0	3.7	3.1	2.7	-	6.0	4.3	3.1	2.5	3.6	3.0	2.4	-	-	5.7	3.8	2.7
22.0	5.0	4.6	3.5	2.9	3.6	3.1	2.6	2.0	5.1	4.0	3.0	2.4	3.5	3.0	2.3	-	-	5.0	3.5	2.5
24.0	4.2	4.3	3.3	2.8	3.5	3.0	2.5	1.9	4.3	3.8	2.8	2.4	3.4	2.9	2.2	1.6	-	4.2	3.3	2.4
26.0	3.5	3.8	3.1	2.7	3.4	2.9	2.3	1.8	3.6	3.5	2.7	2.3	3.3	2.8	2.0	1.5	-	3.6	3.1	2.3
28.0	3.3	3.1	3.0	2.6	3.2	2.9	2.2	1.7	3.3	3.3	2.6	2.3	3.2	2.7	2.0	1.5	-	3.4	2.9	2.2
30.0	3.1	2.6	2.8	2.6	2.7	2.8	2.1	1.7	3.2	2.7	2.5	2.2	2.8	2.6	1.9	1.4	-	3.0	2.7	2.1
32.0	2.9	2.4	2.3	2.4	2.3	2.7	2.0	1.6	2.9	2.5	2.4	2.2	2.3	2.4	1.8	1.3	-	2.5	2.5	2.1
34.0	2.7	2.3	2.1	1.9	2.1	2.3	2.0	1.5	2.4	2.4	2.1	2.1	2.1	2.3	1.7	1.2	-	2.1	2.3	2.0
36.0	2.5	2.2	2.0	1.9	2.0	1.9	1.9	1.5	2.1	2.3	2.0	1.8	2.0	1.9	1.6	1.1	-	1.8	2.0	1.8
38.0	2.1	2.2	2.0	1.8	1.9	1.5	1.8	1.4	1.8	1.9	2.0	1.8	1.9	1.6	1.5	1.1	-	1.5	1.6	1.7
40.0	1.8	1.9	1.9	1.8	1.8	1.4	1.5	1.3	1.5	1.6	1.7	1.7	1.7	1.4	1.5	1.0	-	1.2	1.4	1.5
42.0	1.5	1.6	1.7	1.6	1.7	1.4	1.1	1.3	1.2	1.3	1.4	1.4	1.5	1.4	1.2	1.0	-	1.0	1.1	1.2
44.0	1.3	1.4	1.4	-	1.5	1.3	1.1	0.9	1.0	1.1	1.1	1.1	1.2	1.3	1.1	1.0	-	0.8	0.9	0.9
46.0	-	-	-	-	1.3	1.3	1.1	0.8	-	0.8	0.8	0.8	1.0	1.2	1.1	0.9	-	-	-	-
48.0	-	-	-	-	1.1	1.2	1.0	0.8	-	-	-	-	0.8	1.0	1.1	0.9	-	-	-	-
50.0	-	-	-	-	0.9	1.0	1.0	-	-	-	-	-	-	-	0.9	0.9	-	-	-	-
54.0	-	-	-	-	-	0.8	0.8	-	-	-	-	-	-	-	-	-	-	-	-	-
56.0	-	-	-	-	-	-	-	-	-	-	-	-	-	-	-	-	-	-	-	-

m	45.1 m				48.8 m								52.0 m							
	19.0 m				10.8 m				19.0 m				10.8 m				19.0 m			
	0°	15°	30°	45°	0°	15°	30°	45°	0°	15°	30°	45°	0°	15°	30°	45°	0°	15°	30°	45°
12.0	3.4	-	-	-	5.6	-	-	-	3.0	-	-	-	4.9	-	-	-	-	-	-	-
14.0	3.3	-	-	-	5.4	3.6	-	-	3.0	-	-	-	4.6	3.0	-	-	-	2.6	-	-
16.0	3.3	-	-	-	5.1	3.4	2.6	-	2.9	-	-	-	4.3	2.8	2.0	-	-	2.5	-	-
18.0	3.2	2.8	-	-	4.9	3.2	2.4	1.8	2.8	2.3	-	-	4.0	2.7	1.9	-	-	2.5	1.8	-
20.0	3.2	2.7	-	-	4.5	3.1	2.3	1.8	2.8	2.2	-	-	3.7	2.6	1.8	-	-	2.4	1.7	-
22.0	3.1	2.6	1.8	-	4.2	3.0	2.2	1.7	2.7	2.1	1.5	-	3.5	2.4	1.7	-	-	2.4	1.6	-
24.0	3.0	2.5	1.7	-	3.9	2.8	2.1	1.6	2.7	2.0	1.5	-	3.3	2.3	1.6	-	-	2.3	1.6	-
26.0	3.0	2.4	1.6	-	3.6	2.7	2.0	1.6	2.6	1.9	1.4	-	3.1	2.2	1.5	-	-	2.2	1.5	-
28.0	2.9	2.3	1.6	-	3.0	2.6	1.9	1.5	2.5	1.8	1.3	-	2.9	2.1	1.4	-	-	2.1	1.4	-
30.0	2.7	2.2	1.5	1.1	2.5	2.4	1.8	1.5	2.4	1.7	1.3	-	2.4	2.0	1.3	-	-	2.0	1.4	-
32.0	2.3	2.1	1.4	1.1	2.1	2.3	1.8	1.4	2.3	1.7	1.2	-	2.0	1.8	1.3	-	-	1.9	1.3	-
34.0	2.2	1.9	1.4	1.1	1.7	1.9	1.7	1.4	1.9	1.6	1.1	-	1.6	1.7	1.2	-	-	1.8	1.3	-
36.0	2.0	1.8	1.3	1.0	1.3	1.6	1.6	1.4	1.6	1.6	1.1	-	1.2	1.4	1.1	-	-	1.4	1.2	-
38.0	1.7	1.6	1.3	1.0	1.0	1.2	1.4	1.3	1.3	1.5	1.0	-	-	1.1	1.1	-	-	1.1	1.1	-
40.0	1.4	1.4	1.2	0.9	-	-	1.1	1.1	1.0	1.3	1.0	-	-	-	1.0	-	-	-	1.1	-
42.0	1.2	1.4	1.2	0.9	-	-	-	-	-	1.0	1.0	-	-	-	-	-	-	-	0.9	-
44.0	0.9	1.2	1.0	0.9	-	-	-	-	-	-	0.9	-	-	-	-	-	-	-	-	-
46.0	-	0.9	1.0	0.8	-	-	-	-	-	-	-	-	-	-	-	-	-	-	-	-
48.0	-	-	0.9	-	-	-	-	-	-	-	-	-	-	-	-	-	-	-	-	-
50.0	-	-	-	-	-	-	-	-	-	-	-	-	-	-	-	-	-	-	-	-
54.0	-	-	-	-	-	-	-	-	-	-	-	-	-	-	-	-	-	-	-	-



LIEBHERR LTM 1090/2

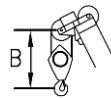
90 TON

Working speeds
Vitesses de travail

Arbeitsgeschwindigkeiten
Werksnelheden

Mechanisms Mécanismes Antriebe Aandrijvingen	Speeds Vitesses Geschwindigkeiten Snelheden	Rope diameter Diamètre du câble Seildurchmesser Kabeldiameter	Single line pull Effort sur brin simple Zulässiger Seilzug je strang Toegelaten trekkracht / part	Length of ropes Longueur des cables Länge der Seile Kabellengte
Main hoist Levage sur flèche Hubwerk 1 Hijlsier 1	0 – 120 m/min	21 mm	78.8 kN	200 m
Auxiliary hoist Levage sur fléchette Hubwerk 2 Hijlsier 2	0 – 120 m/min	21 mm	78.8 kN	200 m
Slewing gear Orientation Drehwerk Zwenkwerk	0 – 2 RPM			
Travel speed Vitesse sur route Fahrgeschwindigkeit Rijsnelheid	0 – 67.2/73.3 km/h			
Booming up Relever la flèche Aufwippen Optoppen	83.5° 50 sec			
Telescope Téléscoper Teleskopieren Telescoperen	11.7 - 52 m 300 sec			

Hook Block / Crane hook Crochet mouflé / Crochet simple



Unterflasche / Hakengehänge Kraanblok / Kraanhaak

Capacity Capacité Tragfähigkeit Capaciteit	Number of sheaves Nombre de poulies Anzahl der Rollen Aantal schijven	Number of lines Nombre de brins Strangzahl Aantal parten	Weight Poids Gewicht Gewicht	"B"
SWL 90.0 t	7	14	1000 kg	3.5 m
SWL 22.0 t	1	3	330 kg	3.0 m