



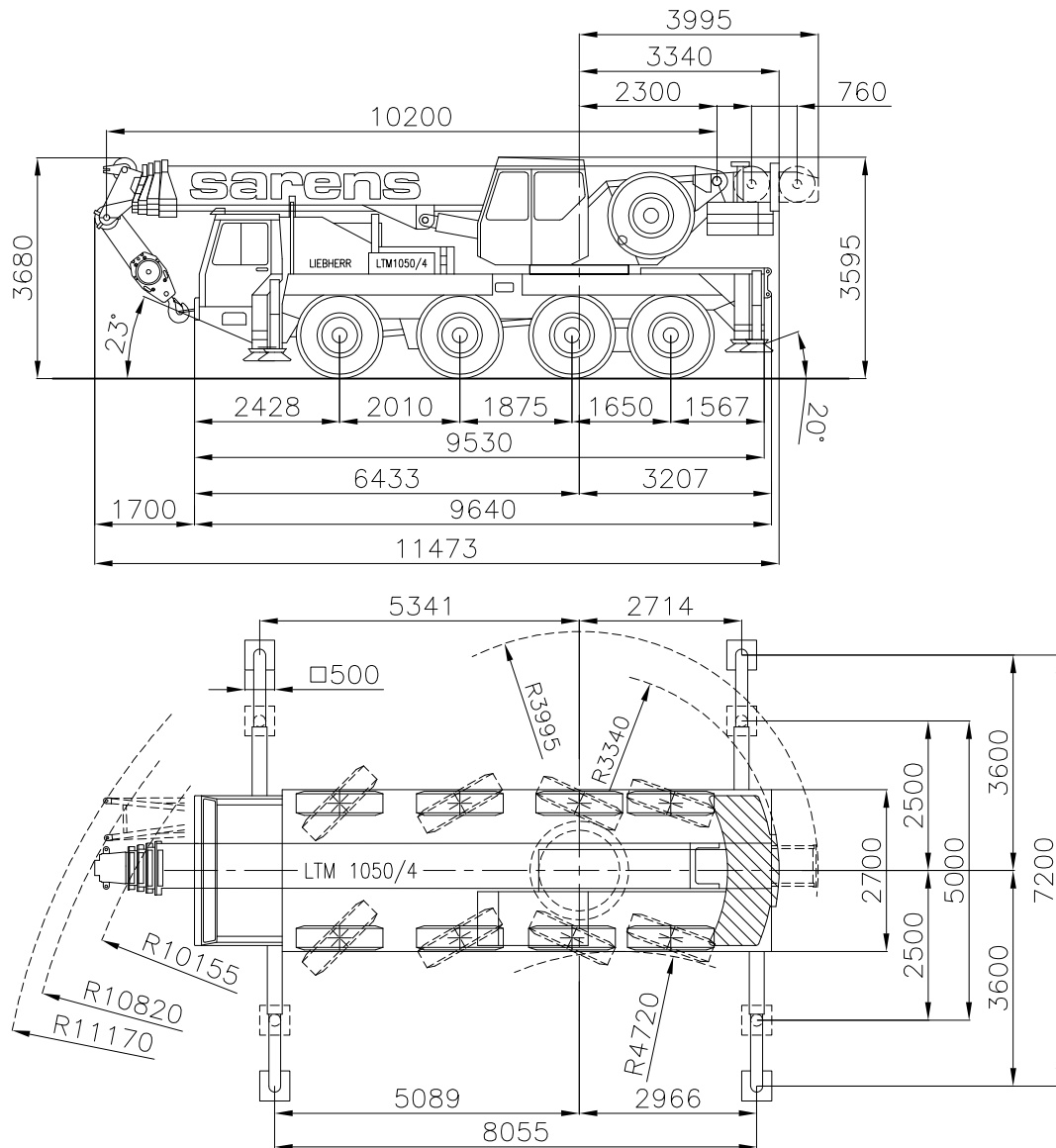
sarens
group

www.sarens.com

LIEBHERR LTM 1050-4

50/60 TON

1/125



Axle load / Charge par essieu / Achslast / Aslast
 Total weight / Poids total / Gesamtgewicht / Totaal gewicht

4 x 11 t
 44 t

(7.3 t)
 (7.3 t)

nothing too heavy, nothing too high





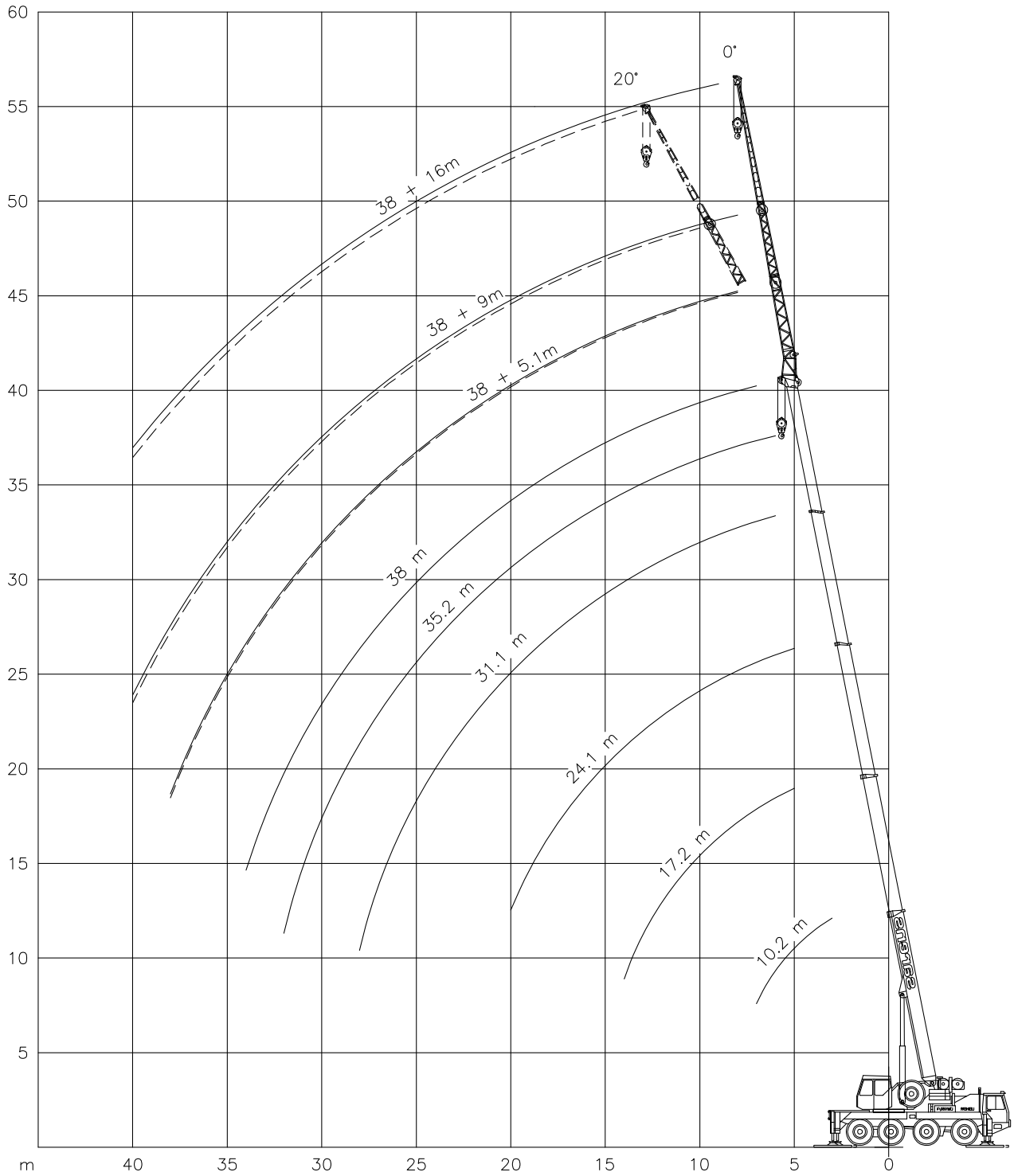
LIEBHERR LTM 1050-4

50 / 60 TON

Working ranges
Portées

Arbeitsbereiche
Werkbereich

T / TK



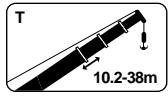
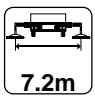


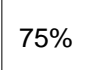
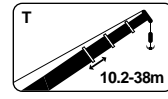
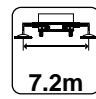


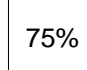


LIEBHERR LTM 1050-4

50 / 60 TON

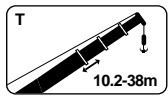
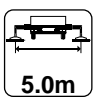


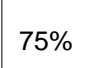
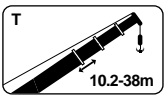
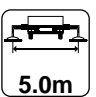


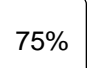
Lifting capacities
Capacités

Tragfähigkeiten
Capacités

m	7.3 t Counterweight					
	10.2 m	17.1 m	24.1 m	31.1 m	35.2 m	38.0 m
3.0	50.0	-	-	-	-	-
3.5	46.0	-	-	-	-	-
4.0	43.0	-	-	-	-	-
4.5	38.5	-	-	-	-	-
5.0	34.5	28.0	18.7	-	-	-
6.0	28.8	25.0	18.3	10.8	8.7	-
7.0	25.0	22.5	17.5	10.7	8.6	7.5
8.0	-	20.1	16.5	10.6	8.5	7.4
9.0	-	18.2	15.4	10.3	8.4	7.3
10.0	-	15.3	14.4	9.9	8.3	7.2
12.0	-	11.4	11.1	8.9	7.9	6.9
14.0	-	8.9	8.6	8.1	7.3	6.4
16.0	-	-	6.9	6.9	6.7	5.7
18.0	-	-	5.6	5.7	5.6	5.2
20.0	-	-	4.6	4.6	4.6	4.4
22.0	-	-	-	3.8	3.8	3.6
24.0	-	-	-	3.1	3.2	3.0
26.0	-	-	-	2.5	2.6	2.5
28.0	-	-	-	2.1	2.1	2.1
30.0	-	-	-	-	1.7	1.7
32.0	-	-	-	-	1.4	1.4
34.0	-	-	-	-	-	1.1

m	4.1 t Counterweight					
	10.2 m	17.1 m	24.1 m	31.1 m	35.2 m	38.0 m
3.0	50.0	-	-	-	-	-
3.5	46.0	-	-	-	-	-
4.0	43.0	-	-	-	-	-
4.5	38.5	-	-	-	-	-
5.0	34.5	28.0	18.7	-	-	-
6.0	28.8	25.0	18.3	10.8	8.7	-
7.0	24.1	21.7	17.5	10.7	8.6	7.5
8.0	-	20.0	16.5	10.6	8.5	7.4
9.0	-	16.7	15.1	10.3	8.4	7.3
10.0	-	14.0	13.1	9.9	8.3	7.2
12.0	-	10.4	10.0	8.9	7.9	6.9
14.0	-	7.9	7.5	7.6	7.3	6.3
16.0	-	-	5.8	6.0	5.9	5.7
18.0	-	-	4.6	4.7	4.7	4.6
20.0	-	-	3.6	3.7	3.7	3.7
22.0	-	-	-	3.0	3.0	3.0
24.0	-	-	-	2.3	2.3	2.4
26.0	-	-	-	1.8	1.8	1.9
28.0	-	-	-	1.4	1.4	1.4
30.0	-	-	-	-	1.1	1.1
32.0	-	-	-	-	0.8	0.8
34.0	-	-	-	-	-	0.8

m	7.3 t Counterweight					
	10.2 m	17.1 m	24.1 m	31.1 m	35.2 m	38.0 m
3.0	44.5	-	-	-	-	-
3.5	40.0	-	-	-	-	-
4.0	36.5	-	-	-	-	-
4.5	33.5	-	-	-	-	-
5.0	30.0	23.5	18.7	-	-	-
6.0	22.7	20.0	17.4	10.8	8.7	-
7.0	16.9	16.6	14.3	10.7	8.6	7.5
8.0	-	13.8	11.9	10.6	8.5	7.4
9.0	-	11.6	10.2	9.4	8.4	7.3
10.0	-	9.7	8.7	8.1	7.7	7.2
12.0	-	7.1	6.6	6.2	5.9	5.8
14.0	-	5.5	5.2	4.8	4.6	4.5
16.0	-	-	4.0	3.8	3.6	3.6
18.0	-	-	3.1	3.0	2.9	2.8
20.0	-	-	2.4	2.4	2.3	2.2
22.0	-	-	-	1.8	1.8	1.7
24.0	-	-	-	1.3	1.3	1.3
26.0	-	-	-	1.0	1.0	0.9
28.0	-	-	-	0.7	0.7	0.7

m	4.1 t Counterweight					
	10.2 m	17.1 m	24.1 m	31.1 m	35.2 m	38.0 m
3.0	44.0	-	-	-	-	-
3.5	40.0	-	-	-	-	-
4.0	36.5	-	-	-	-	-
4.5	31.5	-	-	-	-	-
5.0	27.0	20.5	18.7	-	-	-
6.0	20.1	18.0	15.3	10.8	8.7	-
7.0	14.9	14.6	12.5	10.7	8.6	7.5
8.0	-	12.1	10.4	9.5	8.5	7.4
9.0	-	10.2	8.8	8.1	7.6	7.3
10.0	-	8.5	7.5	6.9	6.6	6.4
12.0	-	6.2	5.6	5.2	5.0	4.9
14.0	-	4.7	4.3	4.0	3.8	3.7
16.0	-	-	3.3	3.1	2.9	2.9
18.0	-	-	2.4	2.3	2.2	2.2
20.0	-	-	1.8	1.8	1.7	1.6
22.0	-	-	-	1.3	1.2	1.2
24.0	-	-	-	0.9	0.9	0.8
26.0	-	-	-	-	-	-
28.0	-	-	-	-	-	-

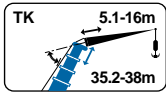


LIEBHERR LTM 1050-4

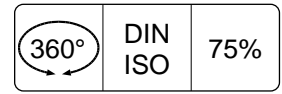
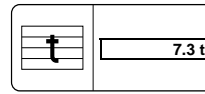
50 / 60 TON

Lifting capacities
Capacités

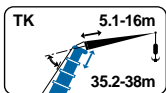
Tragfähigkeiten
Capaciteiten



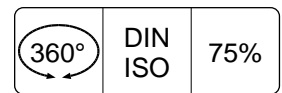
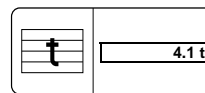
TK



m	35.2 m						38.0 m					
	5.1 m		9.0 m		16.0 m		5.1 m		9.0 m		16.0 m	
	0°	20°	0°	20°	0°	20°	0°	20°	0°	20°	0°	20°
	t	t	t	t	t	t	t	t	t	t	t	t
8.0	6.30	4.50	5.00	-	-	-	5.10	4.00	4.00	-	-	-
9.0	6.30	4.40	5.00	-	3.00	-	5.10	3.90	3.95	-	2.00	-
10.0	6.30	4.25	5.00	3.60	2.90	-	5.10	3.80	3.92	3.00	2.00	-
12.0	6.30	4.00	4.90	3.45	2.70	1.80	5.10	3.65	3.90	2.80	2.00	1.75
14.0	6.10	3.75	4.70	3.30	2.55	1.72	5.00	3.50	3.85	2.65	1.98	1.72
16.0	5.70	3.50	4.40	3.20	2.40	1.65	4.70	3.30	3.75	2.50	1.96	1.70
18.0	5.15	3.25	4.10	3.05	2.20	1.57	4.25	3.10	3.50	2.35	1.93	1.65
20.0	4.50	3.00	3.90	2.95	2.05	1.52	3.90	2.95	3.25	2.25	1.90	1.60
22.0	3.75	2.85	3.70	2.90	1.90	1.46	3.50	2.75	3.05	2.10	1.85	1.55
24.0	3.10	2.65	3.15	2.80	1.80	1.42	2.90	2.60	2.85	2.00	1.80	1.50
26.0	2.60	2.50	2.65	2.70	1.70	1.40	2.40	2.40	2.45	1.90	1.70	1.45
28.0	2.20	2.30	2.25	2.45	1.60	1.35	2.00	2.10	2.05	1.80	1.65	1.42
30.0	1.85	1.90	1.90	2.05	1.55	1.30	1.70	1.80	1.75	1.75	1.60	1.40
32.0	1.50	1.55	1.60	1.70	1.50	1.25	1.40	1.50	1.45	1.60	1.45	1.37
34.0	1.20	1.25	1.30	1.45	1.45	1.22	1.15	1.25	1.20	1.30	1.30	1.34
36.0	0.95	1.00	1.05	1.15	1.20	1.18	0.90	0.95	0.95	1.05	1.05	1.30
38.0	-	-	0.85	0.90	1.00	1.15	0.70	0.70	0.80	0.85	0.85	1.10
40.0	-	-	0.65	0.65	0.85	1.00	-	-	0.60	0.65	0.70	0.90

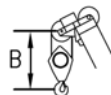


TK



m	35.2 m						38.0 m					
	5.1 m		9.0 m		16.0 m		5.1 m		9.0 m		16.0 m	
	0°	20°	0°	20°	0°	20°	0°	20°	0°	20°	0°	20°
	t	t	t	t	t	t	t	t	t	t	t	t
8.0	6.30	4.50	5.00	-	-	-	5.10	4.00	4.00	-	-	-
9.0	6.30	4.40	5.00	-	3.00	-	5.10	3.90	3.95	-	2.00	-
10.0	6.30	4.25	5.00	3.60	2.90	-	5.10	3.80	3.92	3.00	2.00	-
12.0	6.30	4.00	4.90	3.45	2.70	1.80	5.10	3.65	3.90	2.80	2.00	1.75
14.0	6.10	3.75	4.70	3.30	2.55	1.72	5.00	3.50	3.85	2.65	1.98	1.72
16.0	5.70	3.50	4.40	3.20	2.40	1.65	4.70	3.30	3.75	2.50	1.96	1.70
18.0	4.70	3.25	4.10	3.05	2.20	1.57	4.25	3.10	3.50	2.35	1.93	1.65
20.0	3.80	3.00	3.90	2.95	2.05	1.52	3.55	2.95	3.25	2.25	1.90	1.60
22.0	3.10	2.85	3.20	2.90	1.90	1.46	2.90	2.75	2.95	2.10	1.85	1.55
24.0	2.50	2.65	2.65	2.80	1.80	1.42	2.40	2.50	2.40	2.00	1.80	1.50
26.0	1.95	2.10	2.10	2.35	1.70	1.40	1.95	2.05	2.00	1.90	1.70	1.45
28.0	1.55	1.65	1.65	1.90	1.60	1.35	1.50	1.65	1.65	1.80	1.65	1.42
30.0	1.15	1.25	1.30	1.50	1.55	1.30	1.15	1.25	1.30	1.50	1.45	1.40
32.0	0.85	0.95	1.00	1.15	1.25	1.25	0.80	0.95	0.95	1.15	1.15	1.37
34.0	0.60	0.65	0.70	0.85	0.95	1.22	0.65	0.65	0.70	0.85	0.95	1.22
36.0	-	-	-	-	0.70	1.00	-	-	-	-	0.70	1.00
38.0	-	-	-	-	-	0.70	-	-	-	-	-	0.70

Hook Block / Crane hook
Crochet mouflé / Crochet simple



Unterflasche / Hakengehänge
Kraanblok / Kraanhaak

Capacity Capacité Tragfähigkeit Capaciteit	Number of sheaves Nombre de poulies Anzahl der Rollen Aantal schijven	Number of lines Nombre de brins Strangzahl Aantal parten	Weight Poids Gewicht Gewicht	"B"
SWL 50.0 t	5	11	530 kg	2.0 m
SWL 30.0 t	3	7	260 kg	2.0 m
SWL 12.5 t	1	3	180 kg	2.0 m
SWL 4.5 t	-	1	110 kg	1.8 m

45kN

Ø17mm
L = 160m



V.2011-10-24