

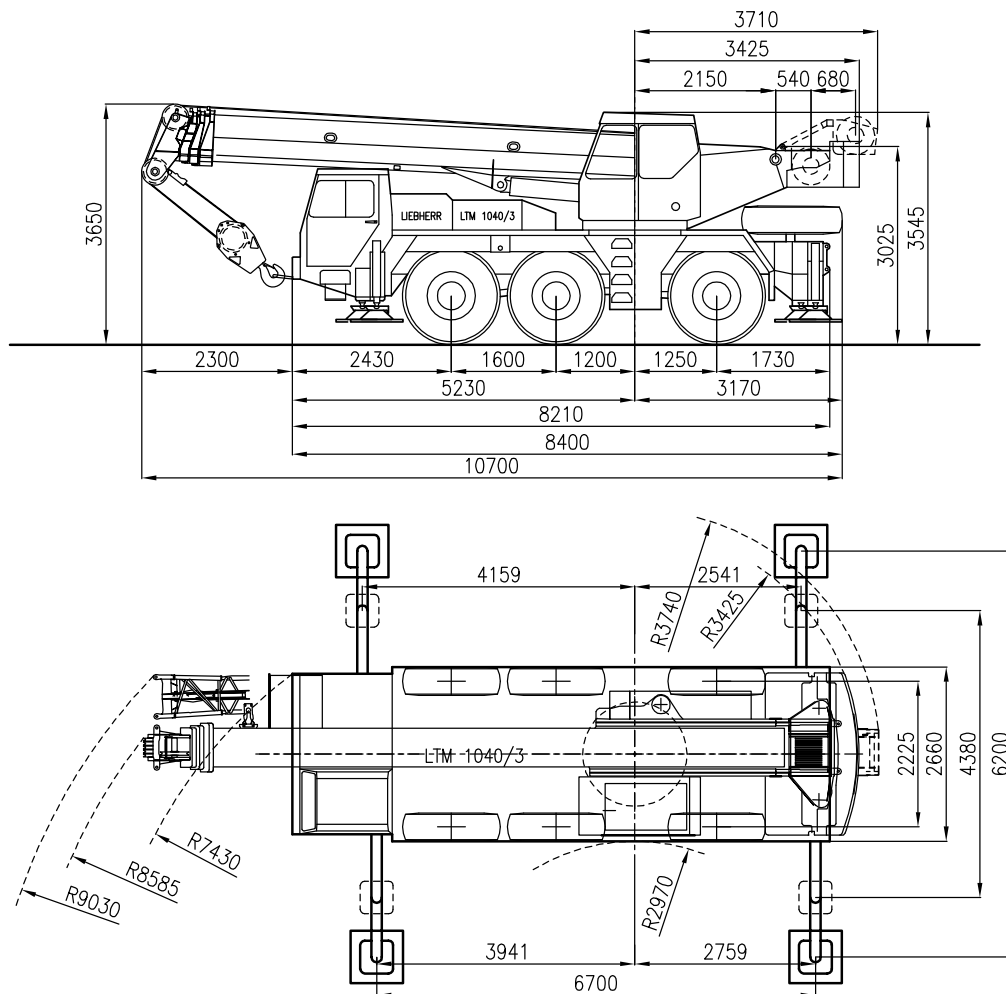


**sarens**  
group

[www.sarens.com](http://www.sarens.com)

## LIEBHERR LTM 1040/3

### 40 TON



Axle load / Charge par essieu / Achslast / Aslast  
Total weight / Poids total / Gesamtgewicht / Totaal gewicht  
Tyres / Pneus / Bereifung / Banden

: 3 x 12 t  
: 36 t  
: 14.00 R 25

nothing too heavy, nothing too high





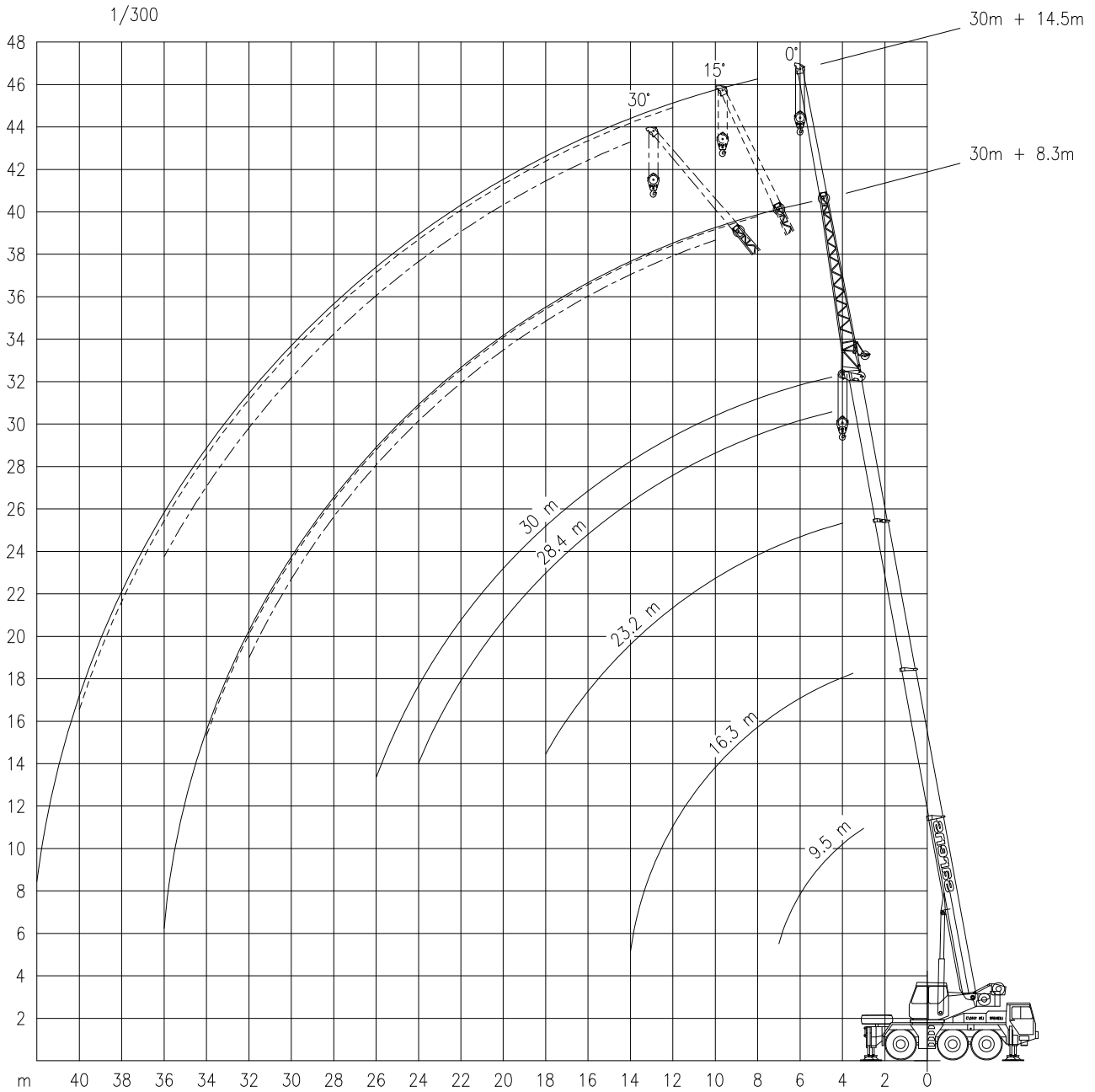
# LIEBHERR LTM 1040/3

Working ranges  
Portées

## 40 TON

Arbeitsbereiche  
Werkbereich

### T + TK



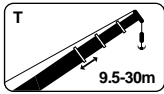


# LIEBHERR LTM 1040/3

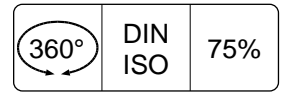
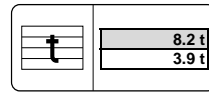
## 40 TON

Lifting capacities  
Capacités

Tragfähigkeiten  
Capaciteiten



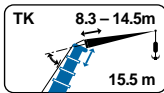
T



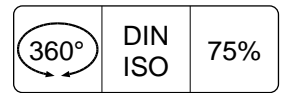
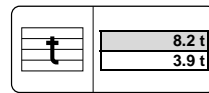
m	9.5 m !*		16.3 m		23.2 m		28.4 m		30.0 m	
	t	t	t	t	t	t	t	t	t	t
3.0	40.0	40.0	13.4	-	-	-	-	-	-	-
3.5	36.5	35.5	12.0	22.5	12.2	-	-	-	-	-
4.0	33.5	32.0	10.7	22.5	11.0	14.0	-	-	-	-
4.5	30.5	28.8	9.7	22.5	9.9	13.9	10.3	9.3	-	-
5.0	27.8	26.2	8.8	22.5	9.0	13.6	10.3	9.3	-	-
6.0	23.3	22.1	7.3	21.6	7.6	13.4	10.2	9.3	-	-
7.0	16.9	16.9	6.2	17.9	6.4	13.3	10.1	9.2	-	-
8.0	-	-	-	15.1	5.5	12.4	10.0	9.1	-	-
9.0	-	-	-	13.0	4.8	10.9	9.8	8.8	-	-
10.0	-	-	-	11.0	4.2	8.3	9.7	8.6	-	-
12.0	-	-	-	8.2	3.2	6.5	8.1	8.0	-	-
14.0	-	-	-	6.4	2.5	5.3	6.5	6.4	-	-
16.0	-	-	-	-	-	4.3	5.3	5.2	-	-
18.0	-	-	-	-	-	3.6	4.3	4.3	-	-
20.0	-	-	-	-	-	-	3.5	3.5	-	-
22.0	-	-	-	-	-	-	3.0	2.9	-	-
24.0	-	-	-	-	-	-	2.5	2.5	-	-
26.0	-	-	-	-	-	-	-	2.1	-	-

m	9.5 m		16.3 m		23.2 m		28.4 m		30.0 m	
	t	t	t	t	t	t	t	t	t	t
38.5	12.8	-	-	-	-	-	-	-	-	-
34.0	11.4	22.5	11.6	-	-	-	-	-	-	-
30.5	10.2	22.5	10.4	14.0	13.9	10.3	9.3	-	-	-
27.6	9.2	22.5	9.4	13.9	10.3	9.3	-	-	-	-
24.6	8.3	22.5	8.6	13.8	10.3	9.3	-	-	-	-
19.6	6.9	18.5	7.2	13.6	10.2	9.3	-	-	-	-
15.5	5.9	14.9	6.1	13.4	10.1	9.2	-	-	-	-
-	-	12.4	5.1	11.3	10.0	9.1	-	-	-	-
-	-	10.3	4.1	9.7	9.1	8.8	-	-	-	-
-	-	8.6	3.4	8.4	7.9	7.8	-	-	-	-
-	-	6.3	2.5	6.4	6.1	6.0	-	-	-	-
-	-	4.8	1.9	4.9	4.8	4.7	-	-	-	-
-	-	-	-	3.7	3.6	3.5	-	-	-	-
-	-	-	-	3.0	2.9	2.8	-	-	-	-
-	-	-	-	2.4	2.3	2.3	-	-	-	-
-	-	-	-	-	1.9	1.9	-	-	-	-
-	-	-	-	-	1.6	1.5	-	-	-	-
-	-	-	-	-	-	1.3	-	-	-	-

!\* Over rear / En arrière / Nach hinten / Over achterzijde.  
# On tyres / Sur pneus / Auf reifen / Op banden.



HaVSL



m	15.5 m					
	8.3 m			14.5 m		
	0°	15°	30°	0°	15°	30°
5.0	6.0	-	-	-	-	-
6.0	6.0	-	-	-	-	-
7.0	5.8	-	-	-	-	-
8.0	5.7	4.3	-	2.7	-	-
9.0	5.6	4.1	3.2	2.7	-	-
10.0	5.4	3.9	3.1	2.6	-	-
12.0	5.1	3.6	2.9	2.4	1.9	-
14.0	4.6	3.3	2.8	2.2	1.8	1.5
16.0	4.1	3.2	2.7	2.1	1.7	1.4
18.0	3.7	3.0	2.6	1.9	1.6	1.4
20.0	3.3	2.9	2.5	1.8	1.5	1.4
22.0	2.8	2.8	2.5	1.7	1.5	1.3
24.0	2.4	2.5	2.4	1.6	1.4	1.2
26.0	2.1	2.1	2.2	1.6	1.4	1.2
28.0	1.8	1.9	1.9	1.5	1.3	1.2
30.0	1.6	1.6	1.6	1.4	1.3	1.1
32.0	1.4	1.4	-	1.4	1.2	1.1
34.0	1.2	-	-	1.2	1.2	1.0
36.0	-	-	-	1.1	1.1	1.0
38.0	-	-	-	0.9	1.0	-
40.0	-	-	-	0.8	-	-
42.0	-	-	-	-	-	-

m	15.5 m					
	8.3 m			14.5 m		
	0°	15°	30°	0°	15°	30°
5.6	-	-	-	-	-	-
5.5	-	-	-	-	-	-
5.5	4.2	-	-	2.7	-	-
5.4	4.0	-	-	2.6	-	-
5.2	3.8	3.0	-	2.6	-	-
4.9	3.6	2.9	-	2.4	1.8	-
4.5	3.3	2.8	-	2.2	1.7	-
4.1	3.1	2.7	-	2.1	1.7	1.4
3.7	3.0	2.6	-	1.9	1.6	1.4
3.2	2.9	2.6	-	1.8	1.5	1.3
2.7	2.8	2.5	-	1.7	1.5	1.2
2.3	2.4	2.4	-	1.6	1.4	1.2
2.0	2.1	2.2	-	1.6	1.3	1.1
1.7	1.8	1.9	-	1.5	1.3	1.1
1.5	1.6	1.6	-	1.4	1.2	1.0
1.3	1.4	1.4	-	1.3	1.1	1.0
1.2	1.2	-	-	1.1	1.1	0.9
1.1	-	-	-	1.0	1.0	0.9
-	-	-	-	0.9	0.9	-
-	-	-	-	0.8	0.8	-
-	-	-	-	0.7	-	-



# LIEBHERR LTM 1040/3

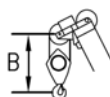
# 40 TON

**Working speeds**  
**Vitesses de travail**

**Arbeitsgeschwindigkeiten**  
**Werksnelheden**

Mechanisms Mécanismes Antriebe Aandrijvingen	Speeds Vitesses Geschwindigkeiten Snelheden	Rope diameter Diamètre du câble Seildurchmesser Kabeldiameter	Single line pull Effort sur brin simple Zulässiger Seilzug je strang Toegelaten trekkracht / part	Length of ropes Longueur des cables Länge der Seile Kabellänge
Main hoist Levage sur flèche Hubwerk 1 Hijlslier 1	0 – 104 m/min	16 mm	42 kN	150 m
Auxiliary hoist Levage sur fléchette Hubwerk 2 Hijlslier 2	0 – 104 m/min	16 mm	42 kN	150 m
Slewing gear Orientation Drehwerk Zwenkwerk	0 – 2.1 RPM			
Travel speed Vitesse sur route Fahrgeschwindigkeit Rijsnelheid	0 – 70 / 76 km/h			
Booming up Relever la flèche Aufwippen Optoppen	80° 33 sec			
Telescope Téléscoper Teleskopieren Telescoperen	9.5 – 30m 77 sec			

## Hook Block / Crane hook Crochet mouflé / Crochet simple



## Unterflasche / Hakengehänge Kraanblok / Kraanhaak

Capacity Capacité Tragfähigkeit Capaciteit	Number of sheaves Nombre de poulies Anzahl der Rollen Aantal schijven	Number of lines Nombre de brins Strangzahl Aantal parten	Weight Poids Gewicht Gewicht	"B"
SWL 40 t	5	10	350 kg	3.0 m
SWL 28 t	3	7	350 kg	3.0 m
SWL 12.6 t	1	3	170 kg	2.7 m
SWL 4.3 t	-	1	110 kg	2.7 m