

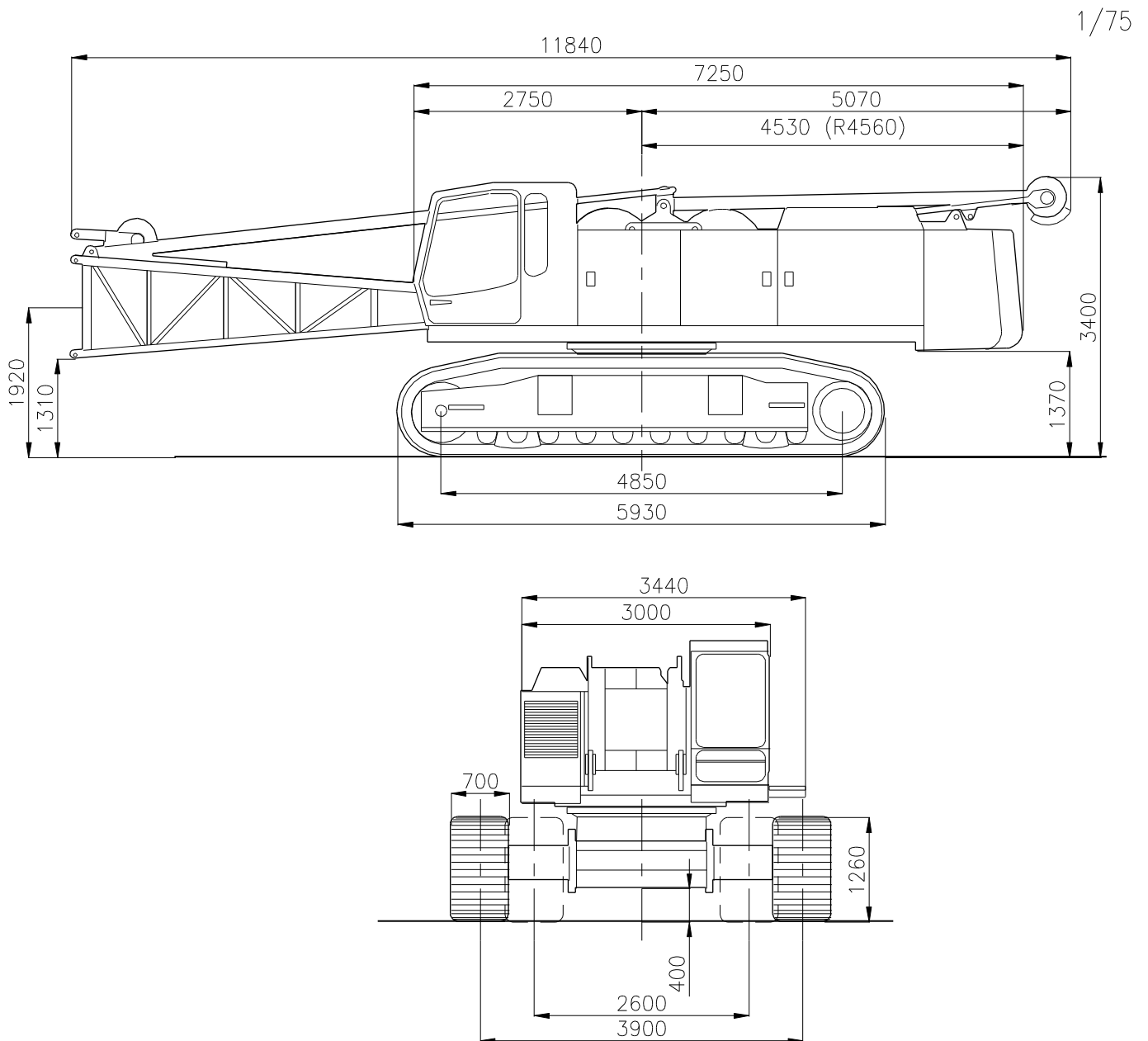


sarens
group

www.sarens.com

LIEBHERR HS 853 HD

80 TON



nothing too heavy, nothing too high





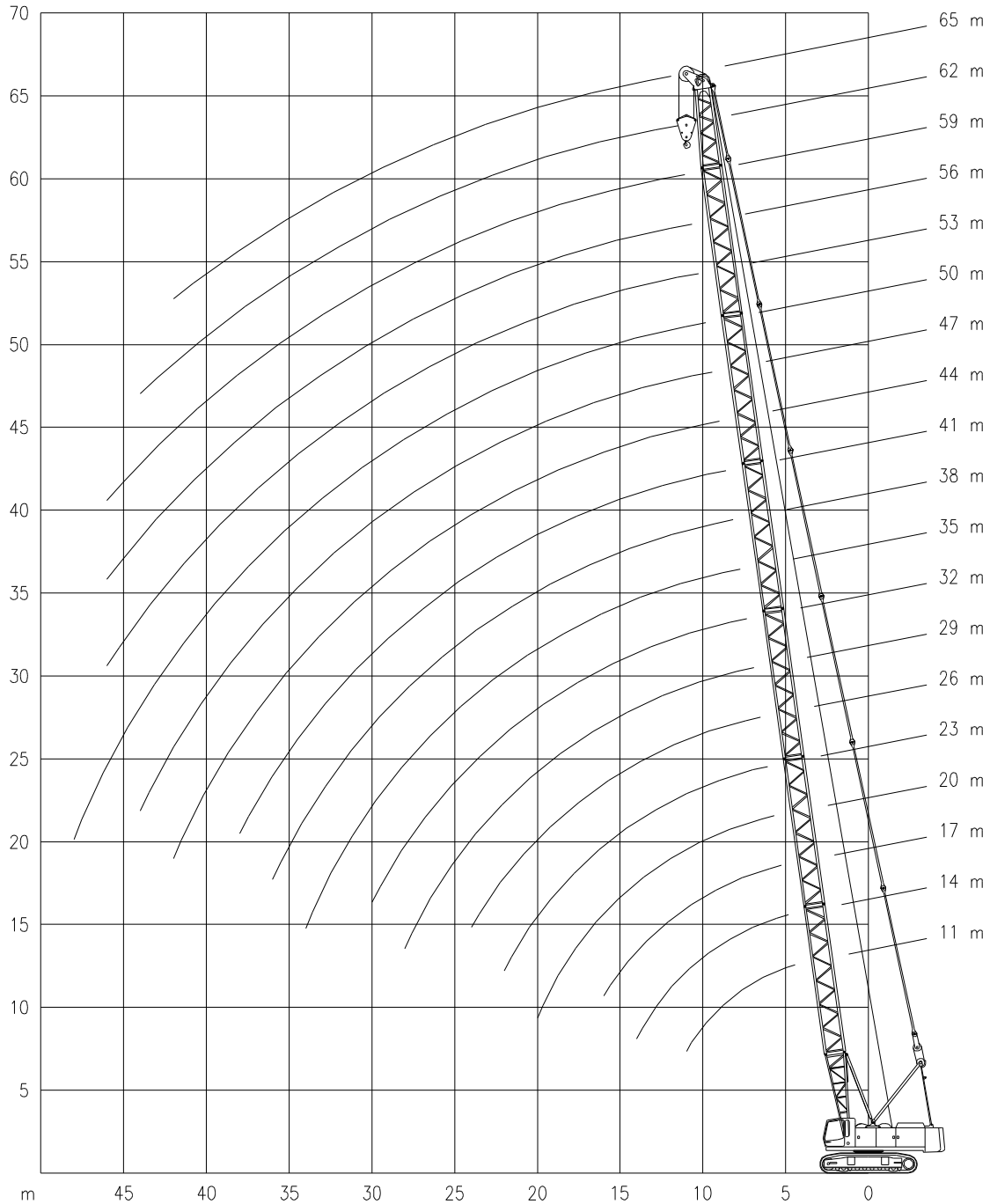
LIEBHERR HS 853 HD

80 TON

Working ranges
Portées

Arbeitsbereiche
Werkbereich

T



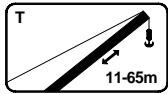


LIEBHERR HS 853 HD

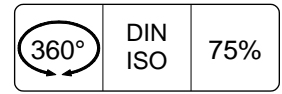
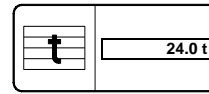
80 TON

Lifting capacities
Capacités

Tragfähigkeiten
Capaciteiten



T



| m | 11m | 14m | 17m | 20m | 23m | 26m | 29m | 32m | 35m | 38m |
|------|-------|------|------|------|------|------|------|------|------|------|
| | t | t | t | t | t | t | t | t | t | t |
| 3.5 | 80.0* | - | - | - | - | - | - | - | - | - |
| 4.0 | 80.0* | 67.3 | - | - | - | - | - | - | - | - |
| 4.5 | 64.6 | 64.6 | 64.6 | - | - | - | - | - | - | - |
| 5.0 | 61.3 | 61.3 | 61.3 | 57.6 | - | - | - | - | - | - |
| 5.5 | 52.3 | 52.3 | 52.2 | 52.2 | 51.0 | 41.5 | - | - | - | - |
| 6.0 | 45.5 | 45.5 | 45.5 | 45.4 | 45.3 | 39.8 | 34.8 | - | - | - |
| 6.5 | 40.3 | 40.2 | 40.2 | 40.1 | 40.1 | 37.6 | 34.3 | 29.2 | - | - |
| 7.0 | 36.1 | 36.0 | 36.0 | 35.9 | 35.9 | 35.8 | 33.8 | 28.8 | 25.2 | - |
| 7.5 | 32.7 | 32.6 | 32.6 | 32.5 | 32.4 | 32.3 | 31.4 | 28.3 | 24.9 | 21.2 |
| 8.0 | 29.8 | 29.8 | 29.8 | 29.6 | 29.5 | 29.5 | 29.4 | 27.9 | 24.7 | 21.1 |
| 9.0 | 25.3 | 25.3 | 25.3 | 25.1 | 25.0 | 25.0 | 24.9 | 24.9 | 23.4 | 20.2 |
| 10.0 | 22.0 | 21.9 | 21.9 | 21.8 | 21.7 | 21.6 | 21.5 | 21.5 | 21.4 | 19.5 |
| 11.0 | 19.3 | 19.3 | 19.3 | 19.1 | 19.1 | 19.0 | 18.9 | 18.8 | 18.8 | 18.7 |
| 12.0 | - | 17.2 | 17.2 | 17.1 | 17.0 | 16.9 | 16.8 | 16.7 | 16.7 | 16.6 |
| 13.0 | - | 15.5 | 15.5 | 15.3 | 15.2 | 15.1 | 15.0 | 15.0 | 14.9 | 14.8 |
| 14.0 | - | 14.1 | 14.1 | 13.9 | 13.8 | 13.7 | 13.6 | 13.6 | 13.5 | 13.4 |
| 15.0 | - | - | - | 12.7 | 12.6 | 12.5 | 12.4 | 12.4 | 12.3 | 12.2 |
| 16.0 | - | - | - | 11.7 | 11.6 | 11.5 | 11.4 | 11.4 | 11.3 | 11.2 |
| 18.0 | - | - | - | 10.0 | 9.9 | 9.8 | 9.7 | 9.7 | 9.6 | 9.5 |
| 20.0 | - | - | - | 8.7 | 8.6 | 8.5 | 8.4 | 8.4 | 8.3 | 8.2 |
| 22.0 | - | - | - | - | 7.5 | 7.4 | 7.3 | 7.3 | 7.2 | 7.1 |
| 24.0 | - | - | - | - | - | 6.6 | 6.5 | 6.5 | 6.3 | 6.2 |
| 26.0 | - | - | - | - | - | - | 5.7 | 5.7 | 5.6 | 5.5 |
| 28.0 | - | - | - | - | - | - | 5.1 | 5.1 | 5.0 | 4.9 |
| 30.0 | - | - | - | - | - | - | - | 4.6 | 4.5 | 4.4 |
| 32.0 | - | - | - | - | - | - | - | - | 4.1 | 3.9 |
| 34.0 | - | - | - | - | - | - | - | - | 3.7 | 3.6 |
| 36.0 | - | - | - | - | - | - | - | - | - | 3.2 |

| m | 41m | 44m | 47m | 50m | 53m | 56m | 59m | 62m** | 65m** |
|------|------|------|------|------|-----|-----|-----|-------|-------|
| | t | t | t | t | t | t | t | t | t |
| 8.0 | 18.3 | 16.2 | - | - | - | - | - | - | - |
| 9.0 | 17.6 | 15.5 | 13.5 | 11.6 | - | - | - | - | - |
| 10.0 | 16.8 | 14.9 | 12.9 | 11.1 | 7.4 | 6.9 | - | - | - |
| 11.0 | 16.3 | 14.3 | 12.5 | 10.6 | 7.0 | 6.5 | 5.7 | 5.2 | 4.5 |
| 12.0 | 15.7 | 13.7 | 12.0 | 10.1 | 6.5 | 6.3 | 5.5 | 4.8 | 4.2 |
| 13.0 | 14.7 | 13.1 | 11.5 | 9.7 | 6.4 | 5.9 | 5.2 | 4.6 | 4.0 |
| 14.0 | 13.3 | 12.6 | 11.0 | 9.3 | 6.2 | 5.7 | 4.9 | 4.4 | 3.7 |
| 15.0 | 12.1 | 12.0 | 10.5 | 8.9 | 6.0 | 5.5 | 4.8 | 4.2 | 3.6 |
| 16.0 | 11.0 | 10.9 | 10.0 | 8.5 | 5.9 | 5.4 | 4.7 | 4.1 | 3.5 |
| 18.0 | 9.4 | 9.3 | 9.1 | 8.0 | 5.6 | 5.0 | 4.3 | 3.7 | 3.1 |
| 20.0 | 8.0 | 7.9 | 7.8 | 7.4 | 5.4 | 4.7 | 4.0 | 3.5 | 2.8 |
| 22.0 | 7.0 | 6.9 | 6.8 | 6.7 | 5.1 | 4.3 | 3.6 | 3.1 | 2.5 |
| 24.0 | 6.1 | 6.0 | 5.9 | 5.8 | 4.8 | 4.1 | 3.2 | 2.8 | 2.3 |
| 26.0 | 5.4 | 5.3 | 5.2 | 5.1 | 4.5 | 3.6 | 2.8 | 2.5 | 1.9 |
| 28.0 | 4.8 | 4.7 | 4.6 | 4.5 | 4.2 | 3.4 | 2.6 | 2.2 | 1.7 |
| 30.0 | 4.3 | 4.2 | 4.1 | 4.0 | 3.8 | 2.9 | 2.4 | 1.9 | 1.4 |
| 32.0 | 3.8 | 3.7 | 3.6 | 3.5 | 3.4 | 2.7 | 2.2 | 1.8 | 1.2 |
| 34.0 | 3.4 | 3.3 | 3.1 | 3.1 | 3.0 | 2.4 | 2.0 | 1.5 | 1.0 |
| 36.0 | 3.1 | 2.9 | 2.8 | 2.7 | 2.6 | 2.2 | 1.8 | 1.3 | 0.8 |
| 38.0 | 2.8 | 2.6 | 2.5 | 2.4 | 2.2 | 1.9 | 1.6 | 1.1 | 0.5 |
| 40.0 | - | 2.3 | 2.2 | 2.1 | 1.9 | 1.7 | 1.4 | 0.9 | 0.4 |
| 42.0 | - | 2.1 | 1.9 | 1.8 | 1.7 | 1.5 | 1.0 | 0.7 | 0.3 |
| 44.0 | - | - | 1.7 | 1.6 | 1.4 | 1.3 | 0.9 | 0.5 | - |
| 46.0 | - | - | - | 1.4 | 1.2 | 1.1 | 0.8 | - | - |
| 48.0 | - | - | - | 1.2 | - | - | - | - | - |

*: Slow and careful hoisting and slewing / No side load allowed / No windload / If steel-ropepulleys are used, lifting capacities -0.3t
 : Conduire lentement et prudemment / Pas de tirage en biais / Vent calme / En cas d'utilisation de poulies en acier, charges -0.3t
 : Sehr langsam und vorsichtig fahren / Keinerlei Schrägzug zulässig / Windstille / Bei Verwendung von Stahl-Seilrollen, Traglasten -0.3t
 : Zeer langzaam rijden / Zijdellingse lading niet toegelaten / Windsnelheid 0 / Bij gebruik van stalen schijven, capaciteit -0.3t
 **: The boom must be hoisted with an auxiliary machine until the minimal boom angle 47° or 51.7° respectively is reached
 : Pour le montage du flèche jusqu'au angle du flèche minimum de 47° ou 51.7° il vous faut une machine auxiliaire
 : Das Aufrichten des Auslegers bis zum angegebenen Mindestauslegerwinkel von 47° oder 51.7° muß mit einem Hilfsgerät erfolgen
 : Oprichten van de hoofdgiek dient te gebeuren met een hulpkraan tot de minimum hoek van 47° of 51.7° is bereikt



LIEBHERR HS 853 HD

80 TON

Working speeds
Vitesses de travail

Arbeitsgeschwindigkeiten
Werksnelheden

| Mechanisms Mécanismes Antriebe Aandrijvingen | Speeds Vitesses Geschwindigkeiten Snelheden | Rope diameter Diamètre du câble Seildurchmesser Kabeldiameter | Single line pull Effort sur brin simple Zulässiger Seilzug je strang Toegelaten trekkraft / part |
|---|--|--|---|
| Main hoist Levage sur flèche Hubwerk 1 Hijslier 1 | 0 – 92 m/min | 30 mm | 200 kN |
| Auxiliary hoist Levage sur fléchette Hubwerk 2 Hijslier 2 | 0 – 92 m/min | 30 mm | 200 kN |
| Auxiliary hoist 3 Levage sur fléchette 3 Hubwerk 3 Hijslier 3 | 0 – 92 m/min | 30 mm | 200 kN |
| Slewing gear Orientation Drehwerk Zwenkwerk | 0 – 4.7 RPM | | |
| Travel speed Vitesse sur route Fahrgeschwindigkeit Rijsnelheid | 0 – 1.6 km/h | | |