

SPECIFICATIONS

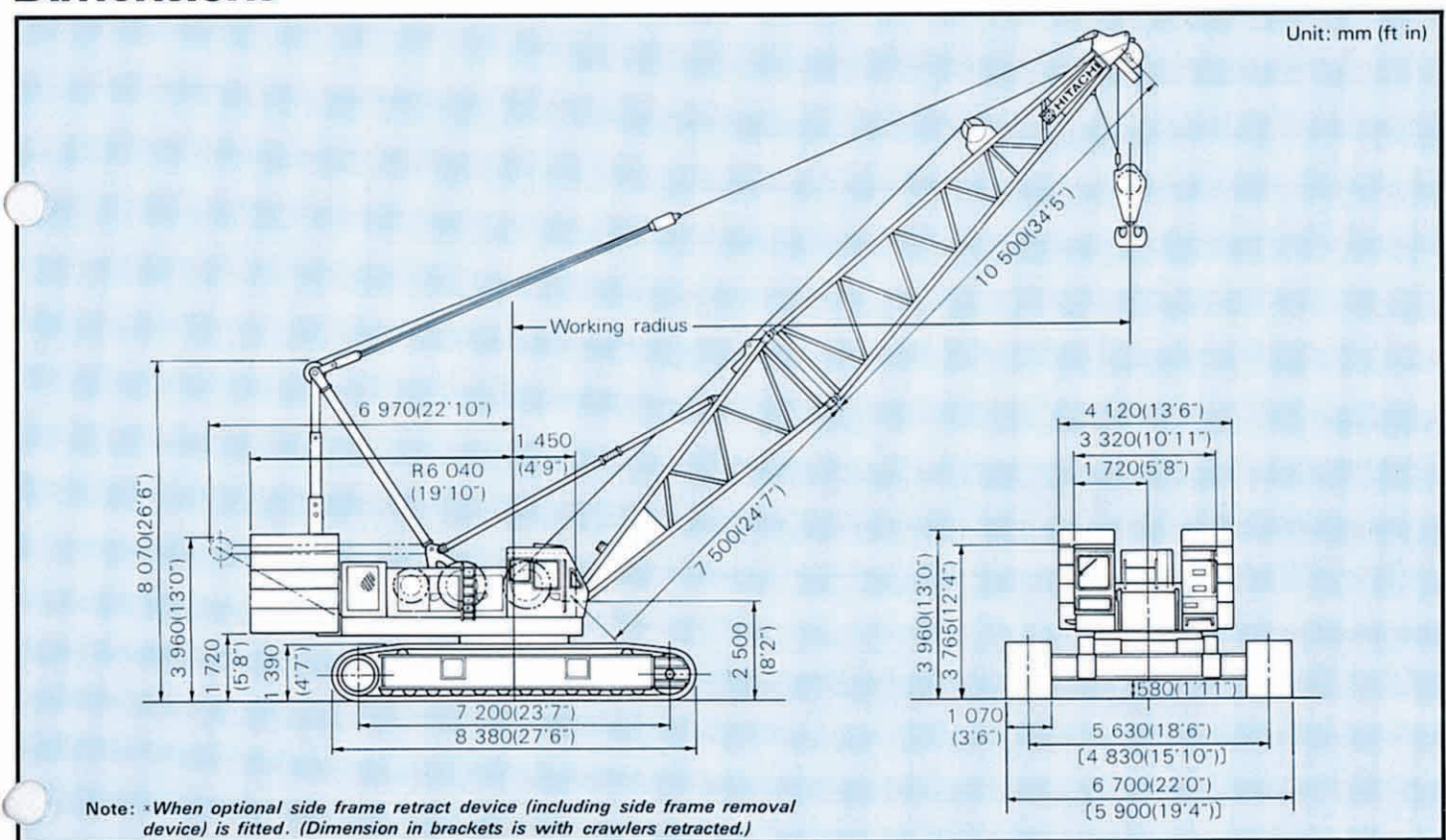


KH850-3

HYDRAULIC CRAWLER CRANE

Max. Lifting Capacity: 150 000 kg (330 700 lb) at 5.0m (16'5")

Dimensions



Specifications

Maximum rated load		150 000 kg(330 700 lb) at 5.0 m(16'5") working radius
Boom	Basic boom length	18.0 m (59'1")
	Max. boom length	84.0 m(275'7")
	Jib length	13.0 m(42'8") to 31.0 m (101'8")
	Max. boom with jib length	103.0 m(337'11") (72.0 m(236'3")+31.0 m(101'8"))
Swing speed	High	0 to 2.0 min ⁻¹ (0 to 2.0 r.p.m.)
	Low	0 to 1.2 min ⁻¹ (0 to 1.2 r.p.m.)
Travel speed^x	High	0 to 1.2 km/h (0 to 0.75 mph)
	Low	0 to 0.8 km/h (0 to 0.50 mph)
Gradeability		17°(30%)
Ground pressure		0.91 bar(0.91 kgf/cm ² , 12.9 psi)
Operating weight	Equipped with basic boom, 150 000 kg (330 700 lb)capacity hook and 57 700 kg (127 200 lb)counterweight	150 000 kg(330 700 lb)
Engine	Model	ISUZU 6RB1T
	Rated horsepower	206 kW(280 PS) at 2 000 min ⁻¹ (2 000 r.p.m.)

* Speeds may vary with load

HOOKS

Capacity	Weight	Number of hoist reeving and maximum rated loads														kg(lb)	Application
		14	13	12	11	10	9	8	7	6	5	4	3	2	1		
150 000 kg (330 700 lb)	2 300 kg (5 070 lb)	150 000 (330 700)	142 000 (313 100)	134 000 (295 400)	127 000 (280 000)	118 000 (260 100)	110 000 (242 500)	100 000 (220 500)	87 500 (192 900)	75 000 (165 300)							standard for main boom
100 000 kg (220 500 lb)	1 400 kg (3 090 lb)							100 000 (220 500)	87 500 (192 900)	75 000 (165 300)	62 500 (137 800)	50 000 (110 200)	37 500 (82 670)	25 000 (55 120)			optional for main boom
60 000 kg (132 300 lb)	1 200 kg (2 650 lb)										60 000 (132 300)	50 000 (110 200)	37 500 (82 670)	25 000 (55 120)			
25 000 kg (55 120 lb)	850 kg (1 870 lb)														25 000 (55 120)		
12 500 kg (27 560 lb)	500 kg (1 100 lb)															12 500 (27 560)	optional for jib or aux Jib

Notes:

This table lists the values based on the use of the Hitachi standard wire rope. *

* The Hitachi standard wire rope is Monorope EP 3xF (a + 40), z-lay Class C in general.

DRUMS

Dimensions

	Rope dia.	Width	Drum p.c.d.	Rope capacity
Main hoist drum	28 mm(1.10")	666 mm(26.2")	590 mm(23.2")	290 m(951')
Aux. hoist drum	28 mm(1.10")	666 mm(26.2")	590 mm(23.2")	290 m(951')

Line speed and line pull

	Max. line speed m/min (ft/min)		Effective line pull @ Line speed	Max. starting line pull	Max. running line pull	
	Hoisting	Lowering				
Main hoist drum	75(246)	75(246)	131 kN (13 400 kgf) (29 540 lbf)	37 m/min (121 ft/min)	186 kN (19 000 kgf) (41 890 lbf)	196 kN (20 000 kgf) (44 090 lbf)
Aux. hoist drum	75(246)	75(246)	131 kN (13 400 kgf) (29 540 lbf)	37 m/min (121 ft/min)	186 kN (19 000 kgf) (41 890 lbf)	196 kN (20 000 kgf) (44 090 lbf)

Notes:

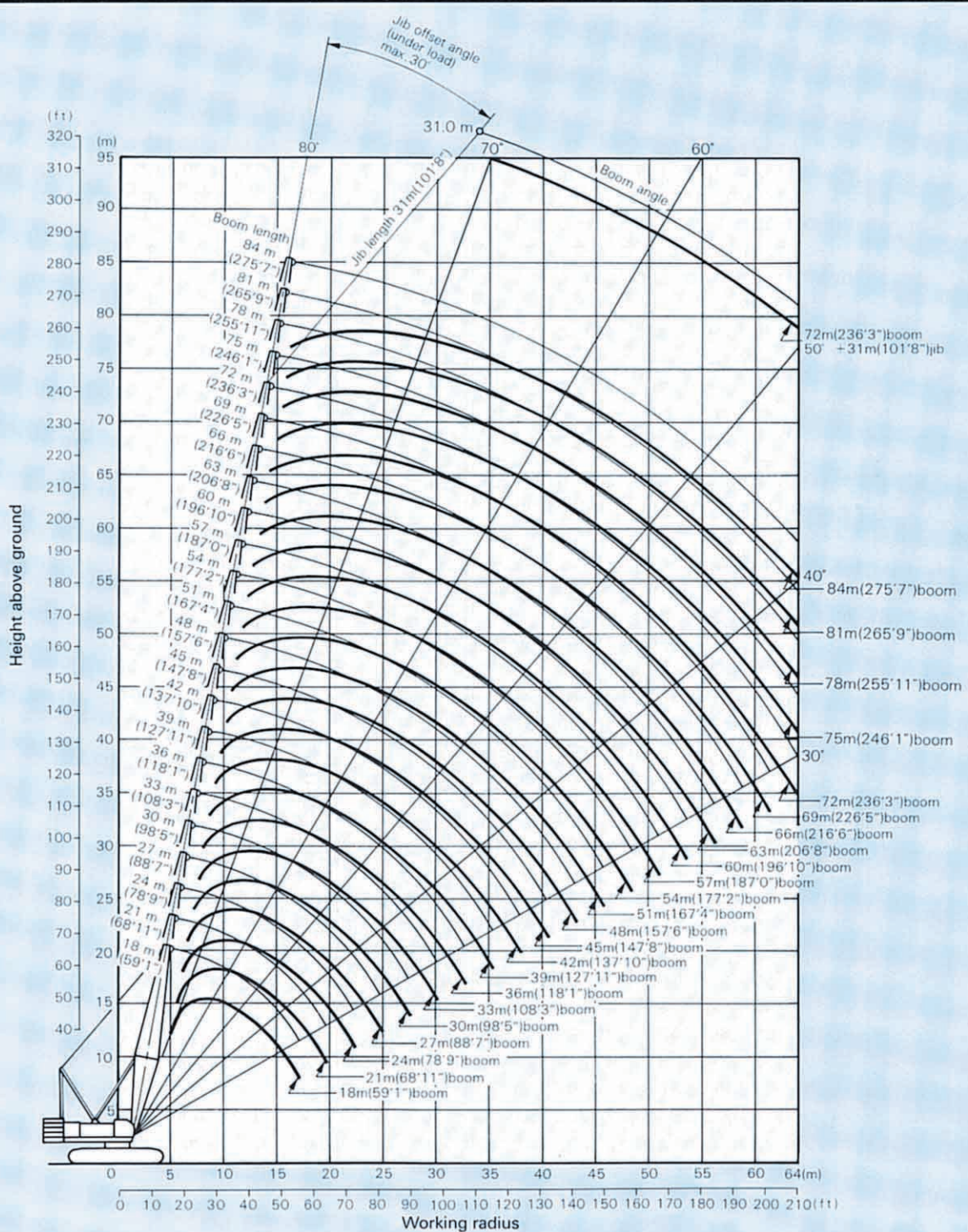
- Line speed and line pull are based on first layer of winding at rated engine rpm.
- Hoisting line speed varies with load.
- Line pull is based on a single line pull in high speed range.
- Effective line pull is equivalent to available line pull of mechanical drive winch.

- When hydraulic motor starts, since it is not rotating line pull is "Max. starting line pull". After motor rotating, the line pull becomes "Max. running line pull" shortly.

BOOM HOIST DRUM

Rope diameter	Hoisting line speed	Lowering line speed
22 mm(0.87")	25 m/min(82 ft/min) × 2	25 m/min(82 ft/min) × 2

Working Ranges



Crane Ratings

JIS Rating:

The rated loads shown don't exceed 78% of tipping loads with the machine on firm level ground.

BS Rating:

The rated loads are determined according to BS (British Standard; 1981) on the condition that the machine is stationed on firm, level ground.

PCSA Rating:

The rated loads, listed are determined according to PCSA (Power Crane and Shovel Association in U.S.A) and do not exceed 75% of tipping load on condition that the machine is stationed on firm, level ground.

Tubular Chord Crane Boom in 360° Working Area without Mast

Boom length	Working radius		Rated load					Boom length	Working radius		Rated load				
			JIS rating	BS rating		PCSA rating					JIS rating	BS rating		PCSA rating	
m(ft in)	m	ft in	kg	kg	lb	kg	lb	m(ft in)	m	ft in	kg	kg	lb	kg	lb
18.0 (59'1")	5.0	16' 5"	150 000	150 000	330 700	150 000	330 700	27.0 (88'7")	6.5	21' 4"	112 000	112 000	246 900	112 000	246 900
	5.5	18' 1"	147 000	147 000	324 100	147 000	324 100		7.0	23' 0"	112 000	112 000	246 900	112 000	246 900
	6.0	19' 8"	141 700	141 700	312 400	141 700	312 400		8.0	26' 3"	99 000	99 000	218 300	99 000	218 300
	6.5	21' 4"	133 000	133 000	293 200	133 000	293 200		9.0	29' 6"	85 100	85 100	187 600	83 100	183 200
	7.0	23' 0"	123 600	123 600	272 500	123 600	272 500		10.0	32' 10"	72 800	72 800	160 500	70 800	156 100
	8.0	26' 3"	102 500	102 500	226 000	100 600	221 800		12.0	39' 4"	56 100	56 100	123 700	54 500	120 200
	9.0	29' 6"	85 700	85 700	188 900	83 600	184 300		14.0	45' 11"	45 400	45 400	100 100	44 000	97 000
	10.0	32' 10"	73 400	73 400	161 800	71 500	157 600		16.0	52' 6"	38 000	38 000	83 780	36 700	80 910
	12.0	39' 4"	56 800	56 800	125 200	55 200	121 700		18.0	59' 1"	32 500	32 500	71 650	31 400	69 230
	14.0	45' 11"	46 200	46 200	101 900	44 800	98 770		20.0	65' 7"	28 300	28 300	62 400	27 300	60 200
16.0	52' 6"	36 900	36 900	81 350	36 900	81 350	22.0	72' 2"	25 000	25 000	55 120	24 100	53 130		
17.3	56' 9"	30 900	30 900	68 120	30 900	68 120	24.0	78' 9"	22 300	22 300	49 160	21 500	47 400		
							25.0	82' 0"	20 300	20 300	44 750	20 300	44 750		
21.0 (68'1")	5.5	18' 1"	130 000	130 000	286 600	130 000	286 600	30.0 (98'5")	7.0	23' 0"	101 000	101 000	222 700	101 000	222 700
	6.0	19' 8"	130 000	130 000	286 600	130 000	286 600		8.0	26' 3"	98 000	98 000	216 100	98 000	216 100
	6.5	21' 4"	130 000	130 000	286 600	130 000	286 600		9.0	29' 6"	84 900	84 900	187 200	82 900	182 800
	7.0	23' 0"	121 000	121 000	266 800	121 000	266 800		10.0	32' 10"	72 600	72 600	160 100	70 600	155 600
	8.0	26' 3"	102 100	102 100	225 100	100 300	221 100		12.0	39' 4"	55 900	55 900	123 200	54 200	119 500
	9.0	29' 6"	85 400	85 400	188 300	83 300	183 600		14.0	45' 11"	45 200	45 200	99 650	43 700	96 340
	10.0	32' 10"	73 100	73 100	161 200	71 100	156 700		16.0	52' 6"	37 700	37 700	83 110	36 500	80 470
	12.0	39' 4"	56 500	56 500	124 600	54 800	120 800		18.0	59' 1"	32 200	32 200	70 990	31 100	68 560
	14.0	45' 11"	45 800	45 800	101 000	44 400	97 900		20.0	65' 7"	28 000	28 000	61 730	27 000	59 520
	16.0	52' 6"	38 400	38 400	84 660	37 100	81 790		22.0	72' 2"	24 700	24 700	54 450	23 800	52 470
18.0	59' 1"	32 900	32 900	72 530	31 800	70 110	24.0	78' 9"	22 000	22 000	48 500	21 200	46 740		
19.9	65' 3"	26 500	26 500	58 420	26 500	58 420	26.0	85' 4"	19 800	19 800	43 650	19 100	42 110		
							27.6	90' 7"	17 800	17 800	39 240	17 700	39 020		
24.0 (78'9")	6.0	19' 8"	122 000	122 000	269 000	122 000	269 000	33.0 (108'3")	7.6	24' 11"	91 400	91 400	201 500	91 400	201 500
	6.5	21' 4"	122 000	122 000	269 000	122 000	269 000		8.0	26' 3"	91 200	91 200	201 100	91 200	201 100
	7.0	23' 0"	117 000	117 000	257 900	117 000	257 900		9.0	29' 6"	83 800	83 800	184 700	82 800	182 500
	8.0	26' 3"	101 000	101 000	222 700	100 100	220 700		10.0	32' 10"	72 500	72 500	159 800	70 600	155 600
	9.0	29' 6"	85 200	85 200	187 800	83 100	183 200		12.0	39' 4"	55 800	55 800	123 000	54 100	119 300
	10.0	32' 10"	72 800	72 800	160 500	70 900	156 300		14.0	45' 11"	45 100	45 100	99 430	43 600	96 120
	12.0	39' 4"	56 200	56 200	123 900	54 500	120 200		16.0	52' 6"	37 600	37 600	82 890	36 400	80 250
	14.0	45' 11"	45 500	45 500	100 300	44 100	97 220		18.0	59' 1"	32 100	32 100	70 770	31 000	68 340
	16.0	52' 6"	38 100	38 100	84 000	36 800	81 130		20.0	65' 7"	27 900	27 900	61 510	26 900	59 300
	18.0	59' 1"	32 600	32 600	71 870	31 500	69 450		22.0	72' 2"	24 500	24 500	54 010	23 700	52 250
	20.0	65' 7"	28 400	28 400	62 610	27 400	60 410		24.0	78' 9"	21 900	21 900	48 280	21 100	46 520
	22.0	72' 2"	24 200	24 200	53 350	24 200	53 350		26.0	85' 4"	19 600	19 600	43 210	18 900	41 670
	22.4	73' 6"	23 200	23 200	51 150	23 200	51 150		28.0	91' 10"	17 800	17 800	39 240	17 200	37 920
									30.0	98' 5"	16 000	16 000	35 270	15 700	34 610
							30.2	99' 1"	15 800	15 800	34 830	15 500	34 170		

Boom length	Working radius		Rated load					Boom length	Working radius		Rated load				
			JIS rating	BS rating		PCSA rating					JIS rating	BS rating		PCSA rating	
				kg	kg	lb	kg					lb	kg	kg	lb
m(ft in)	m	ft in	kg	kg	lb	kg	lb	m(ft in)	m	ft in	kg	kg	lb	kg	lb
36.0 (118'1")	8.1	26' 7"	80 700	80 700	177 900	80 700	177 900	45.0 (147'8")	9.7	31'10"	69 000	64 400	142 000	69 000	152 100
	9.0	29' 6"	80 700	80 700	177 900	80 700	177 900		10.0	32'10"	69 000	63 900	140 900	69 000	152 100
	10.0	32'10"	72 000	72 000	158 700	70 400	155 200		12.0	39' 4"	55 200	55 200	121 700	53 600	118 200
	12.0	39' 4"	55 600	55 600	122 600	53 900	118 800		14.0	45'11"	44 400	44 400	97 890	43 000	94 800
	14.0	45'11"	44 800	44 800	98 770	43 400	95 680		16.0	52' 6"	36 900	36 900	81 350	35 700	78 710
	16.0	52' 6"	37 400	37 400	82 450	36 100	79 590		18.0	59' 1"	31 400	31 400	69 230	30 300	66 800
	18.0	59' 1"	31 800	31 800	70 110	30 800	67 900		20.0	65' 7"	27 200	27 200	59 970	26 200	57 760
	20.0	65' 7"	27 600	27 600	60 850	26 700	58 860		22.0	72' 2"	23 800	23 800	52 470	23 000	50 710
	22.0	72' 2"	24 300	24 300	53 570	23 400	51 590		24.0	78' 9"	21 100	21 100	46 520	20 300	44 750
	24.0	78' 9"	21 600	21 600	47 620	20 800	45 860		26.0	85' 4"	18 800	18 800	41 450	18 200	40 120
	26.0	85' 4"	19 400	19 400	42 770	18 700	41 230		28.0	91'10"	17 000	17 000	37 480	16 400	36 160
	28.0	91'10"	17 500	17 500	38 580	16 900	37 260		30.0	98' 5"	15 400	15 400	33 950	14 800	32 630
	30.0	98' 5"	15 900	15 900	35 050	15 300	33 730		32.0	105' 0"	14 000	14 000	30 860	13 500	29 760
	32.0	105' 0"	14 600	14 600	32 190	14 000	30 860		34.0	111' 7"	12 800	12 800	28 220	12 300	27 120
32.8	107' 7"	14 000	14 000	30 860	13 600	29 980	36.0	118' 1"	11 800	11 800	26 010	11 300	24 910		
39.0 (127'11")	8.6	28' 3"	80 700	80 300	177 000	80 700	177 900	38.0	124' 8"	10 900	10 900	24 030	10 500	23 150	
	9.0	29' 6"	80 700	79 200	174 600	80 700	177 900	40.0	131' 3"	10 000	10 000	22 050	9 700	21 380	
	10.0	32'10"	72 000	72 000	158 700	70 200	154 800	40.6	133' 2"	9 600	9 600	21 160	9 500	20 940	
	12.0	39' 4"	55 400	55 400	122 100	53 800	118 600	48.0 (157'6")	10.2	33' 6"	58 800	57 100	125 900	58 800	129 600
	14.0	45'11"	44 700	44 700	98 550	43 300	95 460		12.0	39' 4"	55 000	54 700	120 600	53 400	117 700
	16.0	52' 6"	37 200	37 200	82 010	36 000	79 370		14.0	45'11"	44 300	44 300	97 660	42 900	94 580
	18.0	59' 1"	31 700	31 700	69 890	30 600	67 460		16.0	52' 6"	36 800	36 800	81 130	35 600	78 480
	20.0	65' 7"	27 400	27 400	60 410	26 500	58 420		18.0	59' 1"	31 200	31 200	68 780	30 200	66 580
	22.0	72' 2"	24 100	24 100	53 130	23 300	51 370		20.0	65' 7"	27 000	27 000	59 520	26 000	57 320
	24.0	78' 9"	21 400	21 400	47 180	20 600	45 420		22.0	72' 2"	23 600	23 600	52 030	22 800	50 270
	26.0	85' 4"	19 200	19 200	42 330	18 500	40 790		24.0	78' 9"	20 900	20 900	46 080	20 200	44 530
	28.0	91'10"	17 300	17 300	38 140	16 700	36 820		26.0	85' 4"	18 700	18 700	41 230	18 000	39 680
	30.0	98' 5"	15 700	15 700	34 610	15 200	33 510		28.0	91'10"	16 800	16 800	37 040	16 200	35 710
	32.0	105' 0"	14 400	14 400	31 750	13 800	30 420		30.0	98' 5"	15 200	15 200	33 510	14 600	32 190
34.0	111' 7"	13 200	13 200	29 100	12 700	28 000	32.0		105' 0"	13 800	13 800	30 420	13 300	29 320	
35.4	116' 2"	12 100	12 100	26 680	12 000	26 460	34.0		111' 7"	12 600	12 600	27 780	12 100	26 680	
42.0 (137'10")	9.2	30' 2"	69 000	69 000	152 100	69 000	152 100		36.0	118' 1"	11 500	11 500	25 350	11 100	24 470
	10.0	32'10"	69 000	69 000	152 100	69 000	152 100	38.0	124' 8"	10 600	10 600	23 370	10 200	22 490	
	12.0	39' 4"	55 400	55 400	122 100	53 700	118 400	40.0	131' 3"	9 800	9 800	21 610	9 400	20 720	
	14.0	45'11"	44 600	44 600	98 330	43 200	95 240	42.0	137'10"	9 100	9 100	20 060	8 700	19 180	
	16.0	52' 6"	37 100	37 100	81 790	35 900	79 150	43.2	141' 9"	8 700	8 700	19 180	8 400	18 520	
	18.0	59' 1"	31 600	31 600	69 670	30 500	67 240	51.0 (167'4")	10.7	35' 1"	58 800	51 000	112 400	58 800	129 600
	20.0	65' 7"	27 300	27 300	60 190	26 400	58 200		12.0	39' 4"	54 900	49 500	109 100	53 200	117 300
	22.0	72' 2"	24 000	24 000	52 910	23 200	51 150		14.0	45'11"	44 100	44 100	97 220	42 700	94 140
	24.0	78' 9"	21 300	21 300	46 960	20 500	45 190		16.0	52' 6"	36 600	36 600	80 690	35 400	78 040
	26.0	85' 4"	19 100	19 100	42 110	18 400	40 570		18.0	59' 1"	31 000	31 000	68 340	30 000	66 140
	28.0	91'10"	17 200	17 200	37 920	16 600	36 600		20.0	65' 7"	26 800	26 800	59 080	25 800	56 880
	30.0	98' 5"	15 600	15 600	34 390	15 000	33 070		22.0	72' 2"	23 400	23 400	51 590	22 600	49 820
	32.0	105' 0"	14 200	14 200	31 310	13 700	30 200		24.0	78' 9"	20 700	20 700	45 640	19 900	43 870
	34.0	111' 7"	13 000	13 000	28 660	12 600	27 780		26.0	85' 4"	18 400	18 400	40 570	17 800	39 240
36.0	118' 1"	12 000	12 000	26 460	11 600	25 570	28.0		91'10"	16 600	16 600	36 600	15 900	35 050	
38.0	124' 8"	10 800	10 800	23 810	10 700	23 590	30.0		98' 5"	14 900	14 900	32 850	14 400	31 750	
							32.0		105' 0"	13 600	13 600	29 980	13 100	28 880	
							34.0		111' 7"	12 400	12 400	27 340	11 900	26 240	
							36.0		118' 1"	11 300	11 300	24 910	10 900	24 030	
							38.0	124' 8"	10 400	10 400	22 930	10 000	22 050		
							40.0	131' 3"	9 600	9 600	21 160	9 200	20 280		
							42.0	137'10"	8 800	8 800	19 400	8 500	18 740		
							44.0	144' 4"	8 200	8 200	18 080	7 900	17 420		
							45.8	150' 3"	7 600	7 600	16 760	7 400	16 310		

Continued on next page

Boom length	Working radius		Rated load					Boom length	Working radius		Rated load				
			JIS rating	BS rating		PCSA rating					JIS rating	BS rating		PCSA rating	
m(ft in)	m	ft in	kg	kg	lb	kg	lb	m(ft in)	m	ft in	kg	kg	lb	kg	lb
54.0 (177'2")	11.2	36' 9"	47 500	45 200	99 650	47 500	104 700	60.0 (196'10")	12.3	40' 4"	46 000	35 800	78 930	46 000	101 400
	12.0	39' 4"	47 500	44 400	97 890	47 500	104 700		14.0	45'11"	42 000	34 400	75 840	42 000	92 590
	14.0	45'11"	44 000	42 400	93 480	42 600	93 920		16.0	52' 6"	36 100	32 900	72 530	34 900	76 940
	16.0	52' 6"	36 500	36 500	80 470	35 300	77 820		18.0	59' 1"	30 500	30 500	67 240	29 500	65 040
	18.0	59' 1"	31 000	31 000	68 340	29 900	65 920		20.0	65' 7"	26 200	26 200	57 760	25 300	55 780
	20.0	65' 7"	26 700	26 700	58 860	25 800	56 880		22.0	72' 2"	22 900	22 900	50 490	22 100	48 720
	22.0	72' 2"	23 300	23 300	51 370	22 500	49 600		24.0	78' 9"	20 100	20 100	44 310	19 400	42 770
	24.0	78' 9"	20 600	20 600	45 420	19 900	43 870		26.0	85' 4"	17 900	17 900	39 460	17 200	37 920
	26.0	85' 4"	18 400	18 400	40 570	17 700	39 020		28.0	91'10"	16 000	16 000	35 270	15 400	33 950
	28.0	91'10"	16 500	16 500	36 380	15 900	35 050		30.0	98' 5"	14 400	14 400	31 750	13 800	30 420
	30.0	98' 5"	14 900	14 900	32 850	14 300	31 530		32.0	105' 0"	13 000	13 000	28 660	12 500	27 560
	32.0	105' 0"	13 500	13 500	29 760	13 000	28 660		34.0	111' 7"	11 800	11 800	26 010	11 300	24 910
	34.0	111' 7"	12 300	12 300	27 120	11 800	26 010		36.0	118' 1"	10 700	10 700	23 590	10 300	22 710
	36.0	118' 1"	11 200	11 200	24 690	10 800	23 810		38.0	124' 8"	9 800	9 800	21 610	9 400	20 720
	38.0	124' 8"	10 300	10 300	22 710	9 900	21 830		40.0	131' 3"	8 900	8 900	19 620	8 600	18 960
	40.0	131' 3"	9 500	9 500	20 940	9 100	20 060		42.0	137'10"	8 200	8 200	18 080	7 900	17 470
	42.0	137'10"	8 700	8 700	19 180	8 400	18 520		44.0	144' 4"	7 500	7 400	16 310	7 200	15 870
	44.0	144' 4"	8 100	8 100	17 860	7 700	16 980		46.0	150'11"	6 900	6 800	14 990	6 700	14 770
46.0	150'11"	7 500	7 400	16 310	7 200	15 870	48.0	157' 6"	6 300	6 200	13 670	6 100	13 450		
48.0	157' 6"	6 700	6 700	14 770	6 700	14 770	50.0	164' 1"	5 800	5 700	12 570	5 600	12 350		
48.4	158'10"	6 600	6 600	14 550	6 600	14 550	52.0	170' 7"	5 200	5 200	11 460	5 200	11 460		
57.0 (187'0")	11.8	38' 9"	47 500	40 100	88 410	47 500	104 700	53.6	175'10"	4 600	4 600	10 140	4 600	10 140	
	12.0	39' 4"	47 500	39 900	87 960	47 500	104 700	63.0 (206'8")	12.8	42' 0"	36 000	31 500	69 450	36 000	79 370
	14.0	45'11"	43 800	38 200	84 220	42 400	93 480		14.0	45'11"	36 000	30 600	67 460	36 000	79 370
	16.0	52' 6"	36 300	36 300	80 030	35 100	77 380		16.0	52' 6"	36 000	29 200	64 380	34 800	76 720
	18.0	59' 1"	30 700	30 700	67 680	29 700	65 480		18.0	59' 1"	30 400	28 000	61 730	29 400	64 820
	20.0	65' 7"	26 400	26 400	58 200	25 500	56 220		20.0	65' 7"	26 100	26 100	57 540	25 200	55 560
	22.0	72' 2"	23 100	23 100	50 930	22 300	49 160		22.0	72' 2"	22 700	22 700	50 040	21 900	48 280
	24.0	78' 9"	20 300	20 300	44 750	19 600	43 210		24.0	78' 9"	20 000	20 000	44 090	19 300	42 550
	26.0	85' 4"	18 100	18 100	39 900	17 400	38 360		26.0	85' 4"	17 700	17 700	39 020	17 100	37 700
	28.0	91'10"	16 200	16 200	35 710	15 600	34 390		28.0	91'10"	15 800	15 800	34 830	15 300	33 730
	30.0	98' 5"	14 600	14 600	32 190	14 000	30 860		30.0	98' 5"	14 200	14 200	31 310	13 700	30 200
	32.0	105' 0"	13 200	13 200	29 100	12 700	28 000		32.0	105' 0"	12 800	12 800	28 220	12 400	27 340
	34.0	111' 7"	12 000	12 000	26 460	11 500	25 350		34.0	111' 7"	11 600	11 600	25 570	11 200	24 690
	36.0	118' 1"	10 900	10 900	24 030	10 500	23 150		36.0	118' 1"	10 500	10 500	23 150	10 200	22 470
	38.0	124' 8"	10 000	10 000	22 050	9 600	21 160		38.0	124' 8"	9 600	9 600	21 160	9 200	20 280
	40.0	131' 3"	9 200	9 200	20 280	8 800	19 400		40.0	131' 3"	8 800	8 800	19 400	8 400	18 520
	42.0	137'10"	8 400	8 400	18 520	8 100	17 860		42.0	137'10"	8 000	7 900	17 420	7 700	16 980
	44.0	144' 4"	7 700	7 700	16 980	7 400	16 310		44.0	144' 4"	7 300	7 200	15 870	7 100	15 650
46.0	150'11"	7 100	7 100	15 650	6 900	15 210	46.0		150'10"	6 700	6 600	14 550	6 500	14 330	
48.0	157' 6"	6 600	6 500	14 330	6 300	13 890	48.0	157' 6"	6 100	6 000	13 230	5 900	13 010		
50.0	164' 1"	5 900	5 900	13 010	5 900	13 010	50.0	164' 1"	5 500	5 400	11 900	5 500	12 130		
51.0	167' 4"	5 500	5 500	12 130	5 500	12 130	52.0	170' 7"	5 000	4 900	10 800	5 000	11 020		
							54.0	177' 2"	4 500	4 500	9 920	4 500	9 920		
							56.0	183' 9"	4 100	4 100	9 040	4 100	9 040		
							56.2	184' 5"	4 000	4 000	8 820	4 000	8 820		

Boom length	Working radius		Rated load					Boom length	Working radius		Rated load				
			JIS rating	BS rating		PCSA rating					JIS rating	BS rating		PCSA rating	
			kg	kg	lb	kg	lb				kg	kg	lb	kg	lb
m(ft in)	m	ft in	kg	kg	lb	kg	lb	m(ft in)	m	ft in	kg	kg	lb	kg	lb
45.0 (147'8")	9.7	31'10"	69 000	69 000	152 100	69 000	152 100	54.0 (177'2")	11.2	36' 9"	47 500	47 500	104 700	47 500	104 700
	10.0	32'10"	69 000	69 000	152 100	69 000	152 100		12.0	39' 4"	47 500	47 500	104 700	47 500	104 700
	12.0	39' 4"	56 300	56 300	124 100	54 700	120 600		14.0	45'11"	44 900	44 900	98 990	43 600	96 120
	14.0	45'11"	45 300	45 300	99 870	43 900	96 780		16.0	52' 6"	37 300	37 300	82 230	36 100	79 590
	16.0	52' 6"	37 600	37 600	82 890	36 500	80 470		18.0	59' 1"	31 600	31 600	69 670	30 600	67 460
	18.0	59' 1"	32 000	32 000	70 550	31 000	68 340		20.0	65' 7"	27 200	27 200	59 970	26 400	58 200
	20.0	65' 7"	27 700	27 700	61 070	26 800	59 080		22.0	72' 2"	23 800	23 800	52 470	23 000	50 710
	22.0	72' 2"	24 200	24 200	53 350	23 400	51 590		24.0	78' 9"	21 000	21 000	46 300	20 300	44 750
	24.0	78' 9"	21 500	21 500	47 400	20 700	45 640		26.0	85' 4"	18 700	18 700	41 230	18 100	39 900
	26.0	85' 4"	19 200	19 200	42 330	18 500	40 790		28.0	91'10"	16 400	16 400	36 160	16 200	35 710
	28.0	91'10"	17 200	17 200	37 920	16 700	36 820		30.0	98' 5"	14 900	14 900	32 850	14 600	32 190
	30.0	98' 5"	15 600	15 600	34 390	15 100	33 290		32.0	105' 0"	13 500	13 500	29 760	13 300	29 320
	32.0	105' 0"	14 200	14 200	31 310	13 700	30 200		34.0	111' 7"	12 600	12 600	27 780	12 100	26 680
	34.0	111' 7"	13 000	13 000	28 660	12 500	27 560		36.0	118' 1"	11 400	11 400	25 130	11 000	24 250
	36.0	118' 1"	11 900	11 900	26 240	11 500	25 350		38.0	124' 8"	10 500	10 500	23 150	10 100	22 270
	38.0	124' 8"	11 000	11 000	24 250	10 600	23 370		40.0	131' 3"	9 600	9 600	21 160	9 300	20 500
	40.0	131' 3"	10 200	10 200	22 490	9 800	21 610		42.0	137'10"	8 800	8 800	19 400	8 500	18 740
40.6	133' 2"	9 900	9 900	21 830	9 600	21 160	44.0	144' 4"	8 200	8 200	18 080	7 900	17 420		
48.0 (157'6")	10.2	33' 6"	58 800	58 800	129 600	58 800	129 600	46.0	150'11"	7 500	7 500	16 530	7 300	16 090	
	12.0	39' 4"	56 100	56 100	123 700	54 600	120 400	48.0	157' 6"	7 000	7 000	15 430	6 700	14 770	
	14.0	45'11"	45 200	45 200	99 650	43 800	96 560	48.4	158'10"	6 900	6 800	14 990	6 600	14 550	
	16.0	52' 6"	37 500	37 500	82 670	36 300	80 030	57.0 (187'0")	11.8	38' 9"	47 500	44 300	97 660	47 500	104 700
	18.0	59' 1"	31 800	31 800	70 110	30 800	67 900		12.0	39' 4"	47 500	44 100	97 220	47 500	104 700
	20.0	65' 7"	27 500	27 500	60 630	26 600	58 640		14.0	45'11"	44 700	42 300	93 260	43 400	95 680
	22.0	72' 2"	24 100	24 100	53 130	23 300	51 370		16.0	52' 6"	37 000	37 000	81 570	35 900	79 150
	24.0	78' 9"	21 300	21 300	46 960	20 600	45 420		18.0	59' 1"	31 300	31 300	69 000	30 300	66 800
	26.0	85' 4"	19 000	19 000	41 890	18 300	40 340		20.0	65' 7"	27 000	27 000	59 520	26 100	57 540
	28.0	91'10"	17 100	17 100	37 700	16 500	36 380		22.0	72' 2"	23 500	23 500	51 810	22 800	50 270
	30.0	98' 5"	15 400	15 400	33 950	14 900	32 850		24.0	78' 9"	20 800	20 800	45 860	20 100	44 310
	32.0	105' 0"	14 000	14 000	30 860	13 500	29 760		26.0	85' 4"	18 500	18 500	40 790	17 800	39 240
	34.0	111' 7"	12 800	12 800	28 220	12 300	27 120		28.0	91'10"	16 500	16 500	36 380	16 000	35 270
36.0	118' 1"	11 700	11 700	25 790	11 300	24 910	30.0		98' 5"	14 900	14 900	32 850	14 400	31 750	
38.0	124' 8"	10 800	10 800	23 810	10 400	22 930	32.0		105' 0"	13 400	13 400	29 540	13 000	28 660	
40.0	131' 3"	9 900	9 900	21 830	9 600	21 160	34.0		111' 7"	12 200	12 200	26 900	11 800	26 010	
42.0	137'10"	9 200	9 200	20 280	8 900	19 620	36.0	118' 1"	11 100	11 100	24 470	10 700	23 590		
43.2	141' 9"	8 800	8 800	19 400	8 500	18 740	38.0	124' 8"	10 200	10 200	22 490	9 800	21 610		
51.0 (167'4")	10.7	35' 1"	58 800	55 800	123 000	58 800	129 600	40.0	131' 3"	9 300	9 300	20 500	9 000	19 840	
	12.0	39' 4"	56 000	54 300	119 700	54 400	119 900	42.0	137'10"	8 600	8 600	18 960	8 300	18 300	
	14.0	45'11"	45 000	45 000	99 210	43 600	96 120	44.0	144' 4"	7 900	7 900	17 420	7 600	16 760	
	16.0	52' 6"	37 300	37 300	82 230	36 100	79 590	46.0	150'11"	7 300	7 200	15 870	7 000	15 430	
	18.0	59' 1"	31 600	31 600	69 670	30 600	67 460	48.0	157' 6"	6 700	6 600	14 550	6 500	14 330	
	20.0	65' 7"	27 300	27 300	60 190	26 400	58 200	50.0	164' 1"	6 200	6 100	13 450	6 000	13 230	
	22.0	72' 2"	23 900	23 900	52 690	23 100	50 930	51.0	167' 1"	5 900	5 800	12 790	5 700	12 570	
	24.0	78' 9"	21 100	21 100	46 520	20 400	44 970								
	26.0	85' 4"	18 800	18 800	41 450	18 200	40 120								
	28.0	91'10"	16 900	16 900	37 260	16 300	35 940								
	30.0	98' 5"	15 200	15 200	33 510	14 700	32 410								
	32.0	105' 0"	13 800	13 800	30 420	13 300	29 320								
	34.0	111' 7"	12 600	12 600	27 780	12 100	26 680								
	36.0	118' 1"	11 500	11 500	25 350	11 100	24 470								
	38.0	124' 8"	10 600	10 600	23 370	10 200	22 490								
	40.0	131' 3"	9 700	9 700	21 380	9 400	20 720								
	42.0	137'10"	9 000	9 000	19 840	8 600	18 960								
44.0	144' 4"	8 300	8 300	18 300	8 000	17 640									
45.8	150' 3"	7 700	7 700	16 980	7 500	16 530									

Continued on next page

Boom length	Working radius		Rated load					Boom length	Working radius		Rated load				
			JIS rating	BS rating		PCSA rating					JIS rating	BS rating		PCSA rating	
m(ft in)	m	ft in	kg	kg	lb	kg	lb	m(ft in)	m	ft in	kg	kg	lb	kg	lb
60.0 (196'10")	12.3	40' 4"	46 000	39 600	87 300	46 000	101 400	66.0 (216'6")	13.3	43' 8"	36 000	31 800	70 110	36 000	79 370
	14.0	45' 11"	44 500	38 300	84 440	43 200	95 240		14.0	45' 11"	36 000	31 300	69 000	36 000	79 370
	16.0	52' 6"	36 800	36 800	81 130	35 700	78 710		16.0	52' 6"	36 000	30 100	66 360	35 700	78 710
	18.0	59' 1"	31 100	31 100	68 560	30 200	66 580		18.0	59' 1"	31 200	28 800	63 490	30 200	66 580
	20.0	65' 7"	26 800	26 800	59 080	25 900	57 100		20.0	65' 7"	26 800	26 800	59 080	25 900	57 100
	22.0	72' 2"	23 400	23 400	51 590	22 600	49 820		22.0	72' 2"	23 400	23 400	51 590	22 600	49 820
	24.0	78' 9"	20 600	20 600	45 420	19 900	43 870		24.0	78' 9"	20 600	20 600	45 420	19 900	43 870
	26.0	85' 4"	18 300	18 300	40 340	17 600	38 800		26.0	85' 4"	18 300	18 300	40 340	17 600	38 800
	28.0	91' 10"	16 300	16 300	35 940	15 800	34 830		28.0	91' 10"	16 300	16 300	35 940	15 800	34 830
	30.0	98' 5"	14 700	14 700	32 410	14 200	31 310		30.0	98' 5"	14 700	14 700	32 410	14 200	31 310
	32.0	105' 0"	13 200	13 200	29 100	12 800	28 220		32.0	105' 0"	13 200	13 200	29 100	12 800	28 220
	34.0	111' 7"	12 000	12 000	26 460	11 600	25 570		34.0	111' 7"	12 000	12 000	26 460	11 600	25 570
	36.0	118' 1"	10 900	10 900	24 030	10 500	23 150		36.0	118' 1"	10 900	10 900	24 030	10 500	23 150
	38.0	124' 8"	10 000	10 000	22 050	9 600	21 160		38.0	124' 8"	9 900	9 900	21 830	9 600	21 160
	40.0	131' 3"	9 100	9 100	20 060	8 800	19 400		40.0	131' 3"	9 100	9 100	20 060	8 800	19 400
	42.0	137' 10"	8 300	8 300	18 300	8 100	17 860		42.0	137' 10"	8 300	8 300	18 300	8 000	17 640
	44.0	144' 4"	7 700	7 600	16 760	7 400	16 310		44.0	144' 4"	7 600	7 600	16 760	7 400	16 310
	46.0	150' 11"	7 000	7 000	15 430	6 800	14 990		46.0	150' 11"	7 000	6 900	15 210	6 700	14 770
	48.0	157' 6"	6 500	6 400	14 110	6 300	13 890		48.0	157' 6"	6 400	6 300	13 890	6 200	13 670
	50.0	164' 1"	5 900	5 800	12 790	5 800	12 790		50.0	164' 1"	5 800	5 700	12 570	5 700	12 570
52.0	170' 7"	5 400	5 300	11 680	5 300	11 680	52.0	170' 7"	5 200	5 200	11 460	5 200	11 460		
53.6	175' 10"	5 000	5 000	11 020	5 000	11 020	54.0	177' 2"	4 800	4 800	10 580	4 800	10 580		
63.0 (206'8")	12.8	42' 0"	36 000	35 100	77 380	36 000	79 370	56.0	183' 9"	4 300	4 300	9 480	4 300	9 480	
	14.0	45' 11"	36 000	34 200	75 400	36 000	79 370	58.0	190' 3"	3 900	3 900	8 600	3 900	8 600	
	16.0	52' 6"	36 000	32 800	72 310	35 600	78 480	58.8	192' 11"	3 700	3 700	8 160	3 700	8 160	
	18.0	59' 1"	31 100	31 100	68 560	30 100	66 360	69.0 (226'5")	13.9	45' 7"	36 000	28 400	62 610	36 000	79 370
	20.0	65' 7"	26 700	26 700	58 860	25 800	56 880		14.0	45' 11"	36 000	28 400	62 610	36 000	79 370
	22.0	72' 2"	23 200	23 200	51 150	22 500	49 600		16.0	52' 6"	36 000	27 200	59 970	35 500	78 260
	24.0	78' 9"	20 400	20 400	44 970	19 800	43 650		18.0	59' 1"	30 900	26 000	57 320	29 900	65 920
	26.0	85' 4"	18 100	18 100	39 900	17 500	38 580		20.0	65' 7"	26 600	25 000	55 120	25 700	56 660
	28.0	91' 10"	16 200	16 200	35 710	15 600	34 390		22.0	72' 2"	23 100	23 100	50 930	22 300	49 160
	30.0	98' 5"	14 500	14 500	31 970	14 000	30 860		24.0	78' 9"	20 300	20 300	44 750	19 600	43 210
	32.0	105' 0"	13 100	13 100	28 880	12 700	28 000		26.0	85' 4"	18 000	18 000	39 680	17 400	38 360
	34.0	111' 7"	11 900	11 900	26 240	11 500	25 350		28.0	91' 10"	16 100	16 100	35 490	15 500	34 170
	36.0	118' 1"	10 800	10 800	23 810	10 400	22 930		30.0	98' 5"	14 400	14 400	31 750	13 900	30 640
	38.0	124' 8"	9 800	9 800	21 610	9 500	20 940		32.0	105' 0"	13 000	13 000	28 660	12 500	27 560
	40.0	131' 3"	8 900	8 900	19 620	8 600	18 960		34.0	111' 7"	11 700	11 700	25 790	11 300	24 910
	42.0	137' 10"	8 200	8 200	18 080	7 900	17 420		36.0	118' 1"	10 600	10 600	23 370	10 300	22 710
	44.0	144' 4"	7 500	7 400	16 310	7 200	15 870		38.0	124' 8"	9 700	9 700	21 380	9 300	20 500
	46.0	150' 11"	6 900	6 700	14 770	6 600	14 550		40.0	131' 3"	8 800	8 800	19 400	8 500	18 740
	48.0	157' 6"	6 200	6 100	13 450	6 100	13 450		42.0	137' 10"	8 000	8 000	17 640	7 800	17 200
	50.0	164' 1"	5 600	5 600	12 350	5 600	12 350		44.0	144' 4"	7 300	7 200	15 870	7 100	15 650
52.0	170' 7"	5 100	5 100	11 240	5 100	11 240	46.0		150' 11"	6 700	6 600	14 550	6 500	14 330	
54.0	177' 2"	4 600	4 600	10 140	4 600	10 140	48.0		157' 6"	6 000	6 000	13 230	5 900	13 010	
56.0	183' 9"	4 200	4 200	9 260	4 200	9 260	50.0		164' 1"	5 400	5 400	11 900	5 400	11 900	
56.2	184' 5"	4 100	4 100	9 040	4 100	9 040	52.0	170' 7"	4 900	4 900	10 800	4 900	10 800		
							54.0	177' 2"	4 400	4 400	9 700	4 400	9 700		
							56.0	183' 9"	4 000	4 000	8 820	4 000	8 820		
							58.0	190' 3"	3 500	3 500	7 720	3 500	7 720		
							60.0	196' 10"	3 200	3 200	7 050	3 200	7 050		
							61.4	201' 5"	2 900	2 900	6 390	2 900	6 390		

Boom length	Working radius		Rated load					Boom length	Working radius		Rated load				
			JIS rating	BS rating		PCSA rating					JIS rating	BS rating		PCSA rating	
				kg	kg	lb	kg					lb	kg	kg	lb
m(ft in)	m	ft in	kg	kg	lb	kg	lb	m(ft in)	m	ft in	kg	kg	lb	kg	lb
72.0 (236'3")	14.4	47' 3"	34 900	25 700	56 660	34 900	76 940	78.0 (255'11")	15.4	50' 6"	24 400	20 300	44 750	24 400	53 790
	16.0	52' 6"	34 400	24 800	54 670	34 400	75 840		16.0	52' 6"	24 400	20 000	44 090	24 400	53 790
	18.0	59' 1"	30 700	23 700	52 250	29 900	65 920		18.0	59' 1"	24 400	19 100	42 110	24 400	53 790
	20.0	65' 7"	26 400	22 800	50 270	25 700	56 660		20.0	65' 7"	24 400	18 200	40 120	24 400	53 790
	22.0	72' 2"	22 900	21 800	48 060	22 300	49 160		22.0	72' 2"	22 900	17 500	38 580	22 100	48 720
	24.0	78' 9"	20 100	20 100	44 310	19 600	43 210		24.0	78' 9"	20 100	16 700	36 820	19 400	42 770
	26.0	85' 4"	17 800	17 800	39 240	17 400	38 360		26.0	85' 4"	17 800	16 000	35 270	17 200	37 920
	28.0	91'10"	15 900	15 900	35 050	15 500	34 170		28.0	91'10"	15 800	15 300	33 730	15 300	33 730
	30.0	98' 5"	14 200	14 200	31 310	13 900	30 640		30.0	98' 5"	14 100	14 100	31 090	13 700	30 200
	32.0	105' 0"	12 800	12 800	28 220	12 500	27 560		32.0	105' 0"	12 700	12 700	28 000	12 300	27 120
	34.0	111' 7"	11 600	11 600	25 570	11 300	24 910		34.0	111' 7"	11 500	11 500	25 350	11 100	24 470
	36.0	118' 1"	10 500	10 500	23 150	10 200	22 490		36.0	118' 1"	10 400	10 400	22 930	10 000	22 050
	38.0	124' 8"	9 500	9 500	20 940	9 300	20 500		38.0	124' 8"	9 400	9 400	20 720	9 100	20 060
	40.0	131' 3"	8 700	8 700	19 180	8 500	18 740		40.0	131' 3"	8 500	8 500	18 740	8 200	18 080
	42.0	137'10"	7 900	7 900	17 420	7 700	16 980		42.0	137'10"	7 800	7 700	16 980	7 500	16 530
	44.0	144' 4"	7 100	7 100	15 650	7 000	15 430		44.0	144' 4"	7 000	6 900	15 210	6 800	14 990
	46.0	150'11"	6 400	6 400	14 110	6 400	14 110		46.0	150'11"	6 300	6 200	13 670	6 200	13 670
	48.0	157' 6"	5 800	5 800	12 790	5 800	12 790		48.0	157' 6"	5 600	5 600	12 350	5 600	12 350
	50.0	164' 1"	5 200	5 200	11 460	5 200	11 460		50.0	164' 1"	5 000	5 000	11 020	5 000	11 020
	52.0	170' 7"	4 600	4 600	10 140	4 600	10 140		52.0	170' 7"	4 500	4 500	9 920	4 500	9 920
54.0	177' 2"	4 100	4 100	9 040	4 100	9 040	54.0	177' 2"	4 000	4 000	8 820	4 000	8 820		
56.0	183' 9"	3 700	3 700	8 160	3 700	8 160	56.0	183' 9"	3 500	3 500	7 720	3 500	7 720		
58.0	190' 3"	3 300	3 300	7 280	3 300	7 280	58.0	190' 3"	3 100	3 100	6 830	3 100	6 830		
60.0	196'10"	2 900	2 900	6 390	2 900	6 390	60.0	196'10"	2 700	2 700	5 950	2 700	5 950		
62.0	203' 5"	2 500	2 500	5 510	2 500	5 510	62.0	203' 5"	2 400	2 400	5 290	2 300	5 070		
64.0	210' 0"	2 200	2 200	4 850	2 200	4 850	64.0	210' 0"	2 000	2 000	4 410	2 000	4 410		
75.0 (246'1")	14.9	48'11"	33 000	23 000	50 710	33 000	72 750	81.0 (265'9")	15.9	52' 2"	24 400	18 100	39 900	24 400	53 790
	16.0	52' 6"	31 700	22 500	49 600	31 700	69 890		16.0	52' 6"	24 400	18 100	39 900	24 400	53 790
	18.0	59' 1"	30 700	21 500	47 400	29 700	65 480		18.0	59' 1"	24 400	17 200	37 920	24 400	53 790
	20.0	65' 7"	26 300	20 600	45 420	25 500	56 220		20.0	65' 7"	23 000	16 400	36 160	23 000	50 710
	22.0	72' 2"	22 900	19 700	43 430	22 100	48 720		22.0	72' 2"	21 000	15 700	34 610	21 000	46 300
	24.0	78' 9"	20 100	18 900	41 670	19 400	42 770		24.0	78' 9"	19 800	15 000	33 070	19 200	42 330
	26.0	85' 4"	17 800	17 800	39 240	17 200	37 920		26.0	85' 4"	17 500	14 300	31 530	16 900	37 260
	28.0	91'10"	15 800	15 800	34 830	15 300	33 730		28.0	91'10"	15 600	13 700	30 200	15 000	33 070
	30.0	98' 5"	14 200	14 200	31 310	13 700	30 200		30.0	98' 5"	13 900	13 100	28 880	13 400	29 540
	32.0	105' 0"	12 700	12 700	28 000	12 300	27 120		32.0	105' 0"	12 500	12 500	27 560	12 000	26 460
	34.0	111' 7"	11 500	11 500	25 350	11 100	24 470		34.0	111' 7"	11 200	11 200	24 690	10 800	23 810
	36.0	118' 1"	10 400	10 400	22 930	10 000	22 050		36.0	118' 1"	10 100	10 100	22 270	9 800	21 610
	38.0	124' 8"	9 400	9 400	20 720	9 100	20 060		38.0	124' 8"	9 200	9 100	20 060	8 800	19 400
	40.0	131' 3"	8 600	8 500	18 740	8 300	18 300		40.0	131' 3"	8 300	8 200	18 080	8 000	17 640
	42.0	137'10"	7 800	7 700	16 980	7 500	16 530		42.0	137'10"	7 500	7 400	16 310	7 200	15 870
	44.0	144' 4"	7 100	7 000	15 430	6 800	14 990		44.0	144' 4"	6 700	6 600	14 550	6 600	14 550
	46.0	150'11"	6 400	6 300	13 890	6 200	13 670		46.0	150'11"	6 000	5 900	13 010	6 000	13 230
	48.0	157' 6"	5 700	5 700	12 570	5 700	12 570		48.0	157' 6"	5 300	5 300	11 680	5 300	11 680
	50.0	164' 1"	5 100	5 100	11 240	5 100	11 240		50.0	164' 1"	4 700	4 700	10 360	4 700	10 360
	52.0	170' 7"	4 600	4 600	10 140	4 600	10 140		52.0	170' 7"	4 200	4 200	9 260	4 200	9 260
54.0	177' 2"	4 100	4 100	9 040	4 100	9 040	54.0	177' 2"	3 700	3 700	8 160	3 700	8 160		
56.0	183' 9"	3 600	3 600	7 940	3 600	7 940	56.0	183' 9"	3 200	3 200	7 050	3 200	7 050		
58.0	190' 3"	3 200	3 200	7 050	3 200	7 050	58.0	190' 3"	2 800	2 800	6 170	2 800	6 170		
60.0	196'10"	2 800	2 800	6 170	2 800	6 170	60.0	196'10"	2 400	2 400	5 290	2 400	5 290		
62.0	203' 5"	2 500	2 500	5 510	2 500	5 510	62.0	203' 5"	2 000	2 000	4 410	2 000	4 410		
64.0	210' 0"	2 100	2 100	4 630	2 100	4 630									

Continued on next page

Rated Load for Main Boom

Boom length	Working radius		Rated load				
			JIS rating	BS rating		PCSA rating	
m(ft in)	m	ft in	kg	kg	lb	kg	lb
84.0 (275'7")	16.5	54' 2"	22 000	16 200	35 710	22 000	48 500
	18.0	59' 1"	21 000	15 500	34 170	21 000	46 300
	20.0	65' 7"	20 500	14 800	32 630	20 500	45 190
	22.0	72' 2"	20 000	14 100	31 090	20 000	44 090
	24.0	78' 9"	18 700	13 400	29 540	18 700	41 230
	26.0	85' 4"	17 300	12 800	28 220	16 700	36 820
	28.0	91'10"	15 400	12 200	26 900	14 800	32 630
	30.0	98' 5"	13 700	11 600	25 570	13 200	29 100
	32.0	105' 0"	12 300	11 100	24 470	11 800	26 010
	34.0	111' 7"	11 000	10 600	23 370	10 600	23 370
	36.0	118' 1"	9 900	9 900	21 830	9 600	21 160
	38.0	124' 8"	9 000	8 900	19 620	8 600	18 960
	40.0	131' 3"	8 100	8 000	17 640	7 800	17 200
	42.0	137'10"	7 200	7 100	15 650	7 100	15 650
	44.0	144' 4"	6 400	6 400	14 110	6 400	14 110
	46.0	150'11"	5 700	5 700	12 570	5 700	12 570
	48.0	157' 6"	5 100	5 100	11 240	5 100	11 240
	50.0	164' 1"	4 500	4 500	9 920	4 500	9 920
	52.0	170' 7"	3 900	3 900	8 600	3 900	8 600
	54.0	177' 2"	3 400	3 400	7 500	3 400	7 500
56.0	183' 9"	3 000	3 000	6 610	2 900	6 390	
58.0	190' 3"	2 500	2 500	5 510	2 500	5 510	
60.0	196'10"	2 100	2 100	4 630	2 100	4 630	

Notes:

1. The rated loads shown are based on the machine on firm level ground without traveling.
2. The rated loads shown include the weights of all lifting attachments, such as hook and bucket. The load to be actually lifted is the rated load minus the weight of all lifting attachments.
3. The loads marked by are based upon structural strength limitation of the machine.
4. Counterweight is 57 700 kg (127 200 lb).
5. In operation, crawlers must be extended
6. When using a mast, the gantry postures a semi-gantry.

Main Boom & Jib Construction

Main Boom Construction

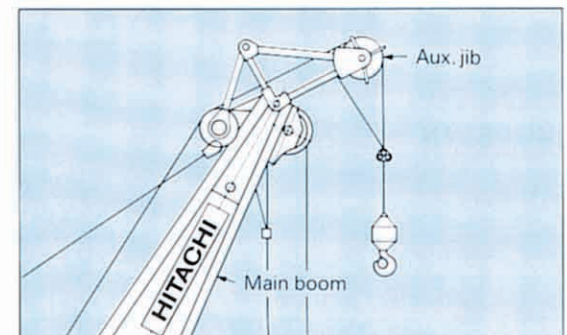
Boom Length	18.0 m (59'1")	21.0 m (68'11")	24.0 m (78'9")	27.0 m (88'7")	30.0 m (98'5")	33.0 m (108'3")	36.0 m (118'1")	39.0 m (127'11")	42.0 m (137'10")	45.0 m (147'8")	48.0 m (157'6")	51.0 m (167'4")	54.0 m (177'2")	57.0 m (187'0")	60.0 m (196'10")	63.0 m (206'8")	66.0 m (216'6")	69.0 m (226'5")	72.0 m (236'3")	75.0 m (246'1")	78.0 m (255'11")	81.0 m (265'9")	84.0 m (275'7")									
Element																																
Lower 7.5 m(24'7")	1	1	1	1	1	1	1	1	1	1	1	1	1	1	1	1	1	1	1	1	1	1	1									
Upper 10.5 m(34'5")	1	1	1	1	1	1	1	1	1	1	1	1	1	1	1	1	1	1	1	1	1	1	1									
Insert A 3.0 m(9'10")	-	1	2	1	2	1	2	2	1	1	2	1	1	2	1	2	1	2	2	1	1	2	1									
Insert 6.0 m(19'8")	-	-	-	1	1	2	2	1	2	1	1	2	1	1	2	2	1	1	1	2	1	1	2									
Insert 9.0 m(29'6")	-	-	-	-	-	-	-	1	1	2	2	2	3	3	3	3	3	3	2	2	3	3	3									
Insert 12.0 m(39'4")	-	-	-	-	-	-	-	-	-	-	-	-	-	-	-	-	1	1	2	2	2	2	2									
Without mast	←																	→														
With mast	←										→																					
Available hook	150 000 kg(330 700 lb)capacity hook										100 000 kg(220 500 lb)capacity hook										60 000 kg(132 300 lb)capacity hook										25 000 kg(55 120 lb) capacity hook	
Attachable Jib	←										13 m(42'8") to 31 m(101'8") Jib														→							
Auxiliary Jib	←																	→														

Jib Construction

Jib length	13.0 m (42'8")	19.0 m (62'4")	25.0 m (82'0")	31.0 m (101'8")
Element				
Lower 5.5 m(16'5")	1	1	1	1
Upper 5.0 m(16'5")	1	1	1	1
Insert 3.0 m(9'10")	1	1	1	1
Insert 6.0 m(19'8")	-	1	2	3
Number of rope reevings	1	1	1	1
Available hook	12 500 kg(27 560 lb)capacity hook			

Auxiliary jib (Optional)

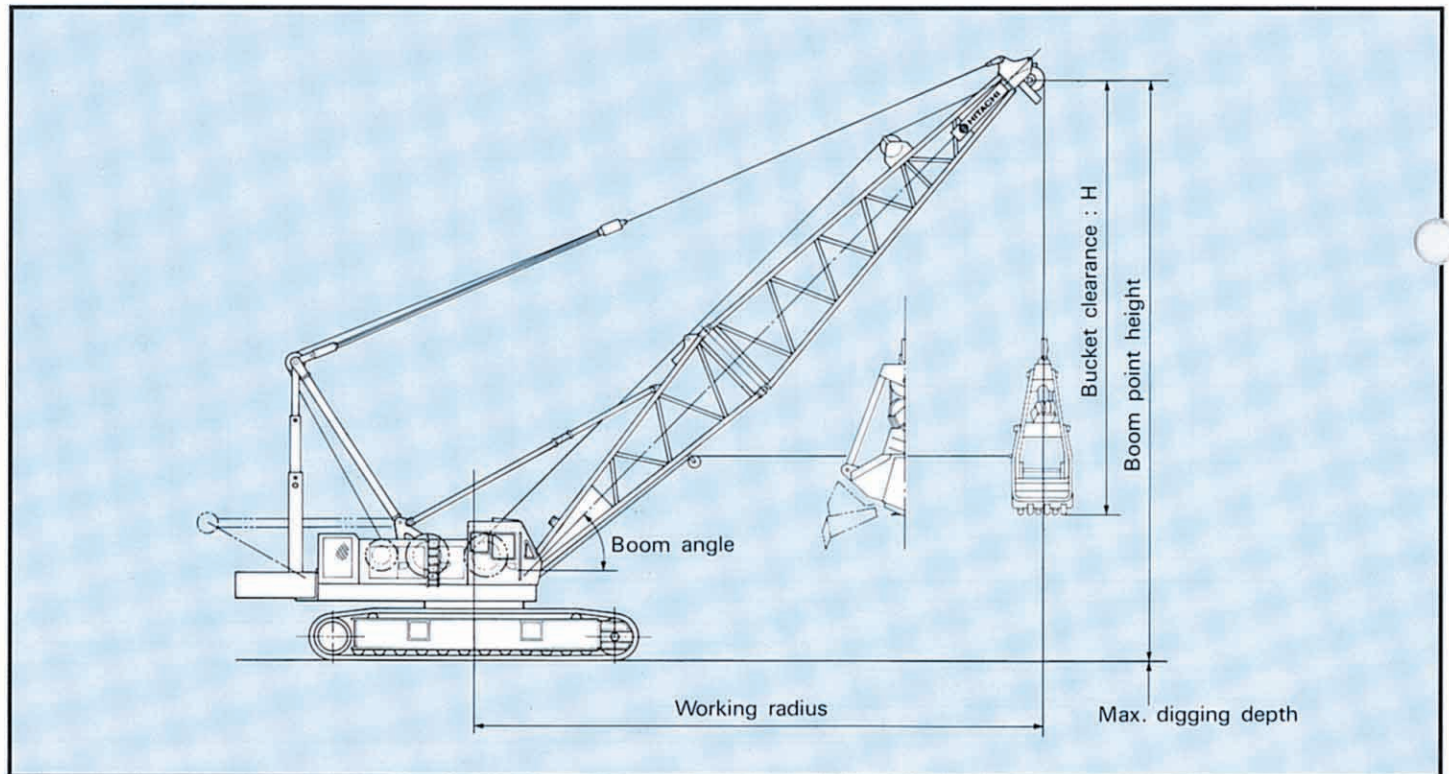
Attachable to main boom top for hoisting light-weight load quickly with a single rope used. (Never use the main and auxiliary hooks at the same time.)



CLAMSHELL

With Tubular CRANE Boom

Dimensions



Specifications

Max. rated load	10 500 kg(23 150 lb)
Bucket capacity	2.5 m ³ (3.3 cu yd)
Boom length	18.0 m(59'1") to 27.0 m(88'7")
Ground pressure	0.78 bar(0.78 kgf/cm ² , 11.1 psi)
Operating weight	129 000 kg(284 400 lb) When equipped with 18 m(59'1")boom, 2.5 m ³ (3.3 cu yd) bucket and 31 450 kg(69 340 lb) counterweight

The other specifications such as engine horsepower, drum data, swing speed, travel speed, etc. are same as crane basic machine. See page 1-2.

BUCKETS

Capacity	Self weight	Bucket clearance: H	Application
2.5 m ³ (3.3 cu yd)	5 500 kg(12 130 lb)	6.5 m(21'4")	General purpose
3.5 m ³ (4.6 cu yd)	4 750 kg(10 470 lb)	6.6 m(21'8")	For gravel
5.5 m ³ (7.2 cu yd)	5 000 kg(11 020 lb)	6.5 m(21'4")	For coal loading

TAGLINE

	Maximum digging depth
Hydraulic operated type	36.0 m(118'1")

Clamshell Ratings and Working Ranges

Boom length	Working radius		Boom angle	Boom point height		Rated load				
	m(ft in)	m		ft in	degree	m	ft in	JIS rating	BS rating	PCSA rating
								kg	kg(lb)	kg(lb)
18.0 (59'1")		16.7	54' 9"	35	12.5	41' 0"	10 500	10 500 (23 150)	10 500 (23 150)	
		14.8	48' 7"	45	14.9	48' 11"	10 500	10 500 (23 150)	10 500 (23 150)	
		12.4	40' 8"	55	17.0	55' 9"	10 500	10 500 (23 150)	10 500 (23 150)	
		9.7	31' 10"	65	18.6	61' 0"	10 500	10 500 (23 150)	10 500 (23 150)	
21.0 (68'11")		19.2	63' 0"	35	14.2	46' 7"	10 500	10 500 (23 150)	10 500 (23 150)	
		16.9	55' 5"	45	17.1	56' 1"	10 500	10 500 (23 150)	10 500 (23 150)	
		14.1	46' 3"	55	19.5	64' 0"	10 500	10 500 (23 150)	10 500 (23 150)	
		11.0	36' 1"	65	21.4	70' 3"	10 500	10 500 (23 150)	10 500 (23 150)	
24.0 (78'9")		21.7	71' 2"	35	15.9	52' 2"	10 500	10 500 (23 150)	10 500 (23 150)	
		19.0	62' 4"	45	19.2	63' 0"	10 500	10 500 (23 150)	10 500 (23 150)	
		15.9	52' 2"	55	21.9	71' 10"	10 500	10 500 (23 150)	10 500 (23 150)	
		12.3	40' 4"	65	24.1	79' 1"	10 500	10 500 (23 150)	10 500 (23 150)	
27.0 (88'7")		24.1	79' 1"	35	17.6	57' 9"	10 500	10 500 (23 150)	10 500 (23 150)	
		21.1	69' 3"	45	21.3	69' 11"	10 500	10 500 (23 150)	10 500 (23 150)	
		17.6	57' 9"	55	24.4	80' 1"	10 500	10 500 (23 150)	10 500 (23 150)	
		13.5	44' 3"	65	26.8	87' 11"	10 500	10 500 (23 150)	10 500 (23 150)	

Notes:

- The rated loads shown include the bucket weight. The load to be actually lifted is the rated load minus bucket weight.
- Counterweight is 31 450 kg (69 340 lb).
- Allowable boom length for clamshell operation is from 18.0 m (59'1") through 27.0 m (88'7").

Specifications



SUPERSTRUCTURE



Engine

Model	ISUZU 6RB1T
Type	Water-cooled, 4-cycle, 6-cylinders, direct injection chamber type turbocharged diesel engine.
Rated horsepower (DIN 6 270, Net)	206 kW (280 PS) at 2 000 min ⁻¹ (2 000 rpm)
Maximum torque	1 170 N·m (119 kgf·m, 861 lbf·ft) at 1 400 min ⁻¹ (1 400 rpm).
Piston displacement	13.7 l (837 cu in)
Fuel tank capacity	400 l (88 Imp gal, 106 U.S. gal)
Electric system	24 V DC. AC generating.



Main and Auxiliary Hoist Mechanism

Both main and auxiliary hoist drums are driven independently by high-torque variable piston motors through reduction gear. Load hoisting/lowering are done by normal/reverse rotation of motor. Smooth, precise power lowering is made possible by the hydraulic brake. As a variable-displacement type hydraulic motor is in use, the motor speed varies automatically with lifting loads.

Clutches Clutches are of the spring-set, hydraulic-released internal-expanding friction band type; main and auxiliary clutches are alike in size and type, with interchangeable clutch linings.

Brakes External contracting friction band-type mechanical brakes, integrated with link lever, operate under normal load. For a larger load, a spring-type boost device is provided to ensure fatigue-free operation. Mechanical brake locks are equipped as standard. Furthermore, while in neutral position the hoist lever is doubly secured in position by a hydraulic brake and an automatic brake. An automatic brake system or hydraulic positive brake system, in neutral position of the hoist lever, can be selected according to job application.

Drums Main and auxiliary hoist drums are of special alloy cast iron. Both hoist drums are mounted on the longtime-lubricated antifriction ball bearings. Drum lugging is so structured as to easily accommodate the changes in wire rope diameter as well as wear and tear of the drum.

Drum Locks Drum pawl locks are provided for integral lock of drums. They are manually controllable from the operator's seat.



Boom Hoist Mechanism

Completely independent operation. Boom hoisting/lowering is done by normal/reverse rotation of the swash plate type axial piston motor. Boom lowering is made by power lowering through the hydraulic system. Instant hoisting/lowering of boom is possible. Both hydraulic brake and spring-set hydraulic-released multiplate disc type brake of positive and safe stopping of boom. When boom is hoisted or lowered brakes are automatically released.

Boom Brakes Spring-set, hydraulic-released multiplate disc type. Brake is automatically actuated when control lever is at neutral position.

Drum Locks Drum pawl lock is manually controlled from operator's seat.



Swing Mechanism

Completely independent operation. Driven by two swash plate type axial piston motors through reduction gear, swing speeds are freely controllable within the 0 to maximum speed with single lever stroking. Swing mechanism offers two-speed selection of swing.

Swing Brake/Swing Parking brake Two spring-set/hydraulic-released multiplate disc type swing brakes can be hydraulically actuated by brake switch on the swing lever. These brake mechanism are used for swing parking brake, too. In this case, cannot start the engine without the brake switch position for safety.

Swing Lock Manually operated mechanical lock with a rod tip which is engaged in a holder of track frame during transportation.

Swing Circle Single-row shear-type ball bearing with heat treated internal gear.



Revolving Frame

All steel welded construction, stress-relieved, precision-machined unit, especially designed for rigidity and strength.

Gantry Lowerable for transportation.

Speedy, easy raising/lowering are possible with optional hydraulic cylinders.

Counterweight Welded structure. Total weight 57 700 kg (127 200 lb)

Consists of 10 sections:

- One 14 500 kg (31 970 lb)
- One: 8 250 kg (18 190 lb)
- One: 4 350 kg (9 590 lb)
- One: 4 350 kg (9 590 lb)
- One: 4 350 kg (9 590 lb)
- One: 4 350 kg (9 590 lb)
- One: 4 350 kg (9 590 lb)
- One: 4 350 kg (9 590 lb)
- One: 4 350 kg (9 590 lb)
- One: 4 350 kg (9 590 lb)



Boom

Tubular Chord CRANE Boom 2 100 mm (6'11") wide by, 2 100 mm (6'11") deep at connection, lattice construction, high tensile strength steel tubular chord.

Basic boom2-piece, total length 18.0 m (59'1"), upper section 10.5 m (34'5") and lower section 7.5 m (24'7")

Boom pointOffset boom point, 7 sheaves mounted on anti-friction bearings on boom peak. Sheave P.C.D.

Boom insert3.0 m (9'10"), 6.0 m (19'8"), 9.0 m (29'6"), and 12.0 m (39'4") long available with appurtenant pendants.

Connection typePin-connected.

Boom backstopDual-rail, telescopic tubular construction with spring bumper.

Boom hoist bridleServes as connection between pendants and boom hoist wire rope reeving, equipped with 9 sheaves [462 mm (18' 2") p.c.d.] for 18-part boom hoist wire rope reeving.



Operator's Cab

All-weather, well-ventilated, all-round visibility, roomy operator's cab. The completely independent cab is insulated against noise and vibration. Sliding, fold-in front window swings up and stores in roof. Fully adjustable reclining seat.



UNDERCARRIAGE

Traction Mechanism Each track is driven by a swash plate type axial piston motor through reduction gear. The hydraulic motor and reduction mechanism are installed within the width of track link shoe. This mechanism allows counterrotation of tracks for maximum maneuverability in close quarters. When lever is at neutral position, both hydraulic brake and spring-set/hydraulic-released multiplate disc brake are automatically actuated to effect reliable stopping. Upper and lower rollers, sprockets and idlers are lifetime lubricated. A hydraulic track adjuster is provided for easy tension adjustment of each track.

Track Frame All-welded, stress relieved, box section construction.

Side Frame Side frames of all-welded construction can be retracted for transportation.

Side Frame Removal Device and Self-loading Device (optional)

Both right and left side frames can be speedily removed by side frame removal device. And self-loading device allows the machine to load its basic machine onto a trailer through the use of its own hydraulic jack cylinders. Travel motor pipings are connected via self-seal couplings for quick disconnection.

Side Frame Extending/Retracting Device (optional) Side frame extending/retracting is done with the cylinder provided inside the track frame. Then, side frame extending/retracting can easily be done in a short time eliminating troublesome piping, etc.

Track Shoes Heat treated alloy steel castings with induction hardened roller path and driving lugs. Shoes are connected by induction-hardened steel pins.

NO. of upper rollers (on each side)3
 NO. of lower rollers (on each side)12
 NO. of track shoes (on each side)64
 Shoe width1 070 mm (42")

Track Tension Adjuster Track tension is adjusted by hydraulic power jack at the front idler bearing block and by inserting proper shims.

HYDRAULIC SYSTEM

2 variable displacement piston pumps + 2 gear pumps hydraulic system allows both independent and combined operations of all functions. Variable-displacement piston pumps not only adequately control operating speeds, but also utilize engine horsepower to maximum.

	Pump-1	Pump-2
Type of pump	Variable displacement pump	
Pressure setting	310 bar (310 kgf/cm ² , 4 410 psi)	310 bar (310 kgf/cm ² , 4 410 psi)
Oil flow	281 l/min (61.8 lmp gpm, 74.2 U.S. gpm)	281 l/min (61.8 lmp gpm, 74.2 U.S. gpm)
Use	• Main hoist • Travel (Right)	• Aux hoist • Boom hoist • Travel (Left)

	Pump-3+4	Pump-5
Type of pump	Gear pump	
Pressure setting	210 bar (210 kgf/cm ² , 2 990 psi)	40 bar (40 kgf/cm ² , 569 psi)
Oil flow	218 l/min (48.0 lmp gpm, 57.6 U.S. gpm)	43 l/min (9.5 lmp gpm, 11.4 U.S. gpm)
Use	• swing	• Remote-controlled Hydraulic serve system

Main and Auxiliary Hoist Motor Swash plate type axial piston motor with counterbalance valve.

Boom Hoist Motor Swash plate type axial piston motor with counterbalance valve.

Swing Motor 2 swash plate type axial piston motors.

Travel Motor Swash plate type axial piston motor with brake valve and spring-set/hydraulic-released multiplate disc brake.

Relief and Brake Valves Each hydraulic circuit incorporates large-capacity relief valves to protect circuit from overload or shock load. Counterbalance valves (compensates safe, positive load lowering and prevents accidental load drop when hydraulic power is suddenly reduced) are provided for hoist motor. Brake valves (consisting of relief valve and counterbalance valve) are provided for travel circuit.

Pressure Setting

MAIN CIRCUIT

● Main relief valves

Hoist (main and aux.)	310 bar (310 kgf/cm ² , 4 410 psi)
Swing	210 bar (210 kgf/cm ² , 2 990 psi)

● Overload relief valves

Hoist (main and aux.) circuit	310 bar (310 kgf/cm ² , 4 410 psi)
Boom hoist circuit	310 bar (310 kgf/cm ² , 4 410 psi)
Travel circuit	300 bar (300 kgf/cm ² , 4 270 psi)

PILOT CIRCUIT

- Main relief valve 40 bar (40 kgf/cm², 569 psi)

Line Filters High filtration 10 μ full-flow filter element is provided to keep hydraulic oil clean and ensure long-term, trouble-free operation. Pilot filter and suction filter are provided for each circuit.



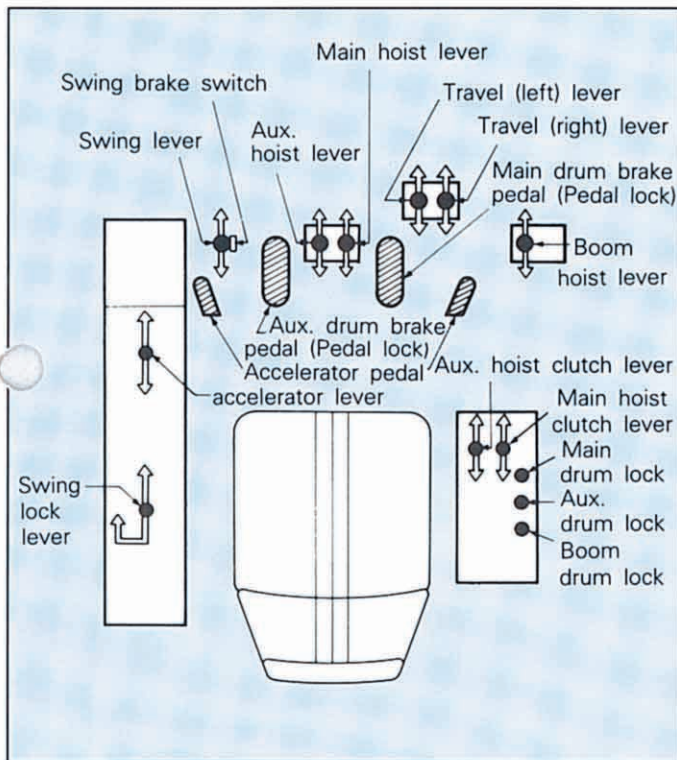
CONTROLS

Boom, Main and Auxiliary Hoist and Travel Remote controlled hydraulic servo. Working speed can be precisely controlled by changing lever stroke.

Swing Mechanical linkage type, featuring smooth, precise swinging.

Fuel Control Two foot throttle (accelerator) pedals and hand throttle (accelerator) controls equipped as standard.

Ultra-low Speed Control System Operating speeds for hoisting, boom hoisting/lowering and travel are infinitely variable within a range of 100 to 30% to facilitate alignment, accurate inching and boom detachment under gravity.



This monitor has the following functions

- **Instruments** Machine conditions are shown on meters.
- **Start up inspection monitor** To check the machine condition and safety device before starting operation.
- **Safety monitor** To warn the abnormality of the machine during operation and carelessness. An additional safety function allows the checking of broken electric wires due to boom and hook overhoist.



SAFETY DEVICES

Boom Angle Indicator Mechanical type boom angle indicator is provided at boom foot.

Counterbalance Valve (Brake Valve) A counterbalance valve is incorporated in travel motors, boom hoist motor, main and auxiliary hoist motor respectively. In case the hydraulic line is broken, this valve is automatically actuated to prevent motor rotation.

Spring-set/Hydraulic-released Multiplate Disc Type Travel Brakes

Swing Lock and Swing Brake

Drum Lock A pawl type drum lock is adopted for main drum, auxiliary drum and boom drum.

For Lift Crane

- **Moment Limiter**
- **Hook Overhoist Prevention Device** When the hook reaches its safety hoist limit, an alarm bell rings and an auto-stop device automatically actuates at the same time.
- **Boom Overhoist Prevention Device** When the boom reaches its safety angle limit, a buzzer alarm sounds and boom hoisting automatically stops at the same time. A telescopic type boom backstop is also installed.

SERVICE REFILL CAPACITIES

	Liters	Imp gal	U.S gal
Fuel tank	440.0	96.7	116.1
Engine coolant	50.0	11.0	13.2
Engine oil	45.0	9.9	11.9
Pump transmission	1.3	0.29	0.34
Boom hoist motor reduction device.....	15.0	3.3	4.0
Winch hoist motor reduction device (on each side) ...	15.0	3.3	4.0
Swing reduction device (on each side).....	4.0	0.9	1.1
Travel final device (on each side).....	35.0	7.7	9.2
Hydraulic system (includ- ing tank capacity)	400.0	87.9	105.5
Hydraulic tank.....	250.0	54.9	66.0

OPTIONAL EQUIPMENT

- Operator's Cab** Electric fan, cab cooler.
- Auxiliary Jib for Crane Boom** Can be attached to the top of main boom for auxiliary hook-hoisting operation.
- Hydraulic Gantry Cylinders**
- Side Frame Removal Device and Self-loading Device**
- Side Frame Retract Device**
- Joystick Lever**

FRONT-END ATTACHMENTS AVAILABLE



Crane



Clamshell

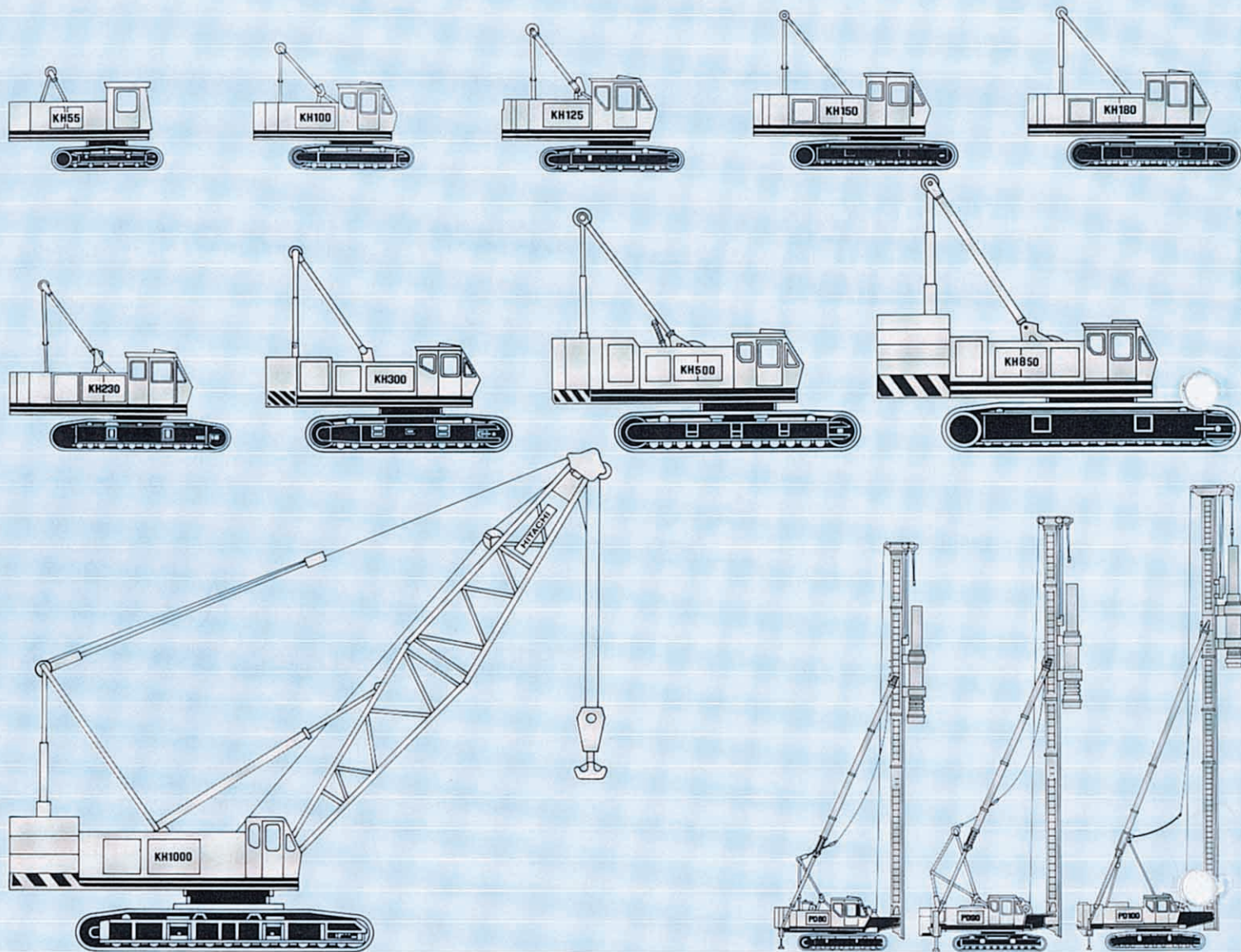


Pontoon-mounted crane



Tower crane

KH AND PD SERIES



These specifications are subject to change without notice.

Hitachi Construction Machinery Co., Ltd.

Head Office: Nippon Bldg., 6-2, 2-chome, Ohtemachi, Chiyoda-ku,
Tokyo 100, Japan

Telephone: Tokyo (03) 3245-6377

Facsimile: Tokyo (03) 3246-2609

Telex: J 32539 HITACONJ

Cable Address: "TOKHITACHIKENKI"