

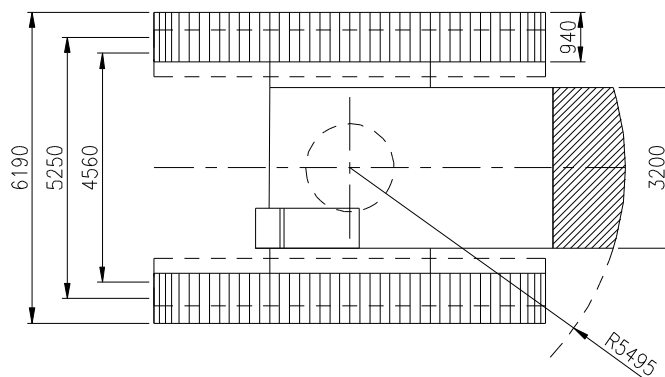
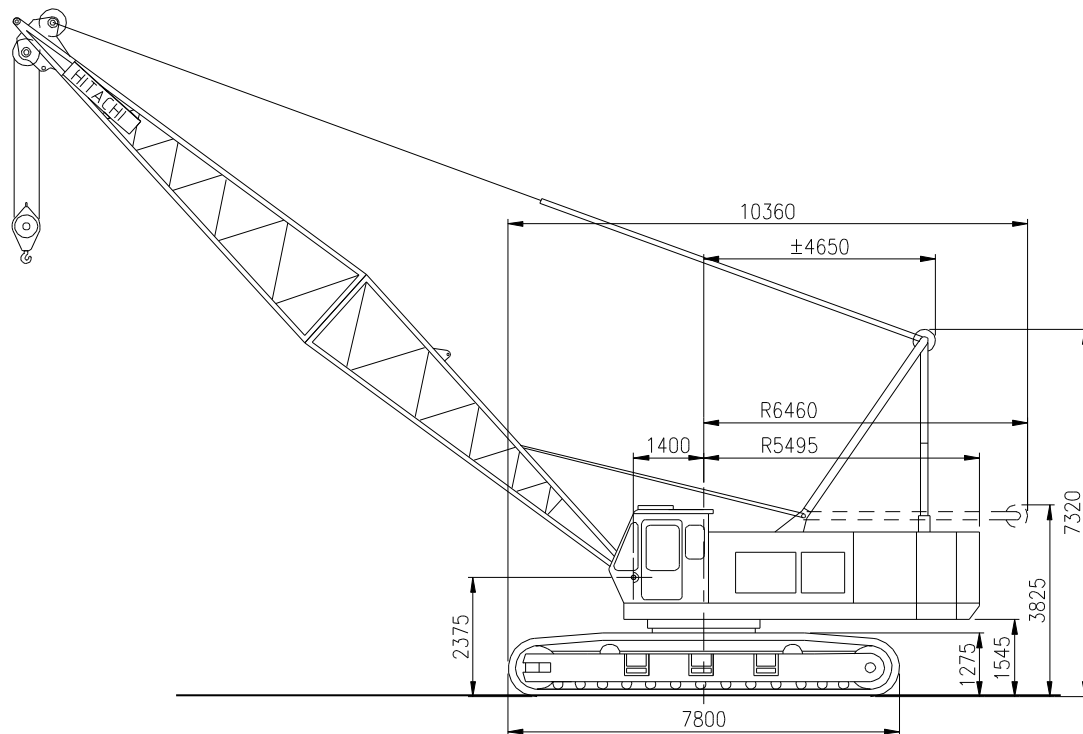


sarens
group

www.sarens.com

HITACHI KH 500-3 S

130 TON



nothing too heavy, nothing too high





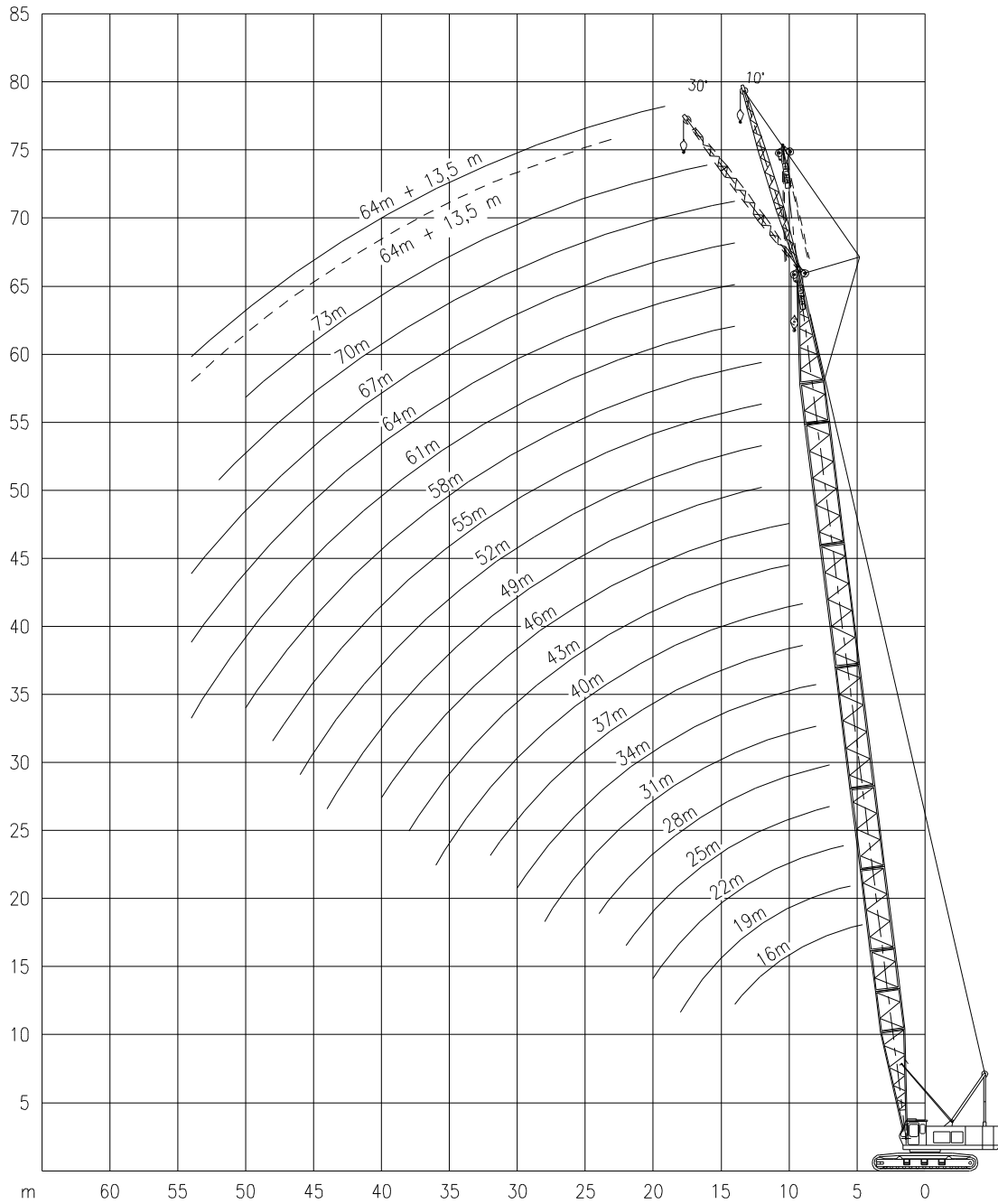
HITACHI KH 500-3 S

Working ranges
Portées

130 TON

Arbeitsbereiche
Werkbereich

MB – FJ



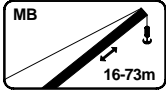


HITACHI KH 500-3 S

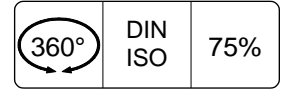
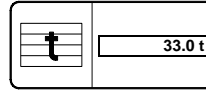
130 TON

Lifting capacities
Capacités

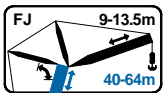
Tragfähigkeiten
Capaciteiten



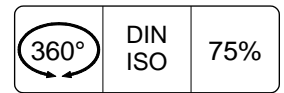
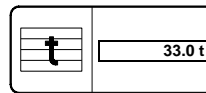
MB



	16m	19m	22m	25m	28m	31m	34m	37m	40m	43m	46m	49m	52m	55m	58m	61m	64m	67m	70m	73m
4.6	130	-	-	-	-	-	-	-	-	-	-	-	-	-	-	-	-	-	-	-
5.0	129	-	-	-	-	-	-	-	-	-	-	-	-	-	-	-	-	-	-	-
5.5	115	109	-	-	-	-	-	-	-	-	-	-	-	-	-	-	-	-	-	-
6.0	102	97.3	92.8	-	-	-	-	-	-	-	-	-	-	-	-	-	-	-	-	-
7.0	84.2	80.5	77.3	74.4	71.6	-	-	-	-	-	-	-	-	-	-	-	-	-	-	-
8.0	71.0	68.6	66.1	63.8	61.7	59.7	53.9	-	-	-	-	-	-	-	-	-	-	-	-	-
9.0	60.4	59.4	57.6	55.8	54.1	52.5	50.9	46.0	41.0	-	-	-	-	-	-	-	-	-	-	-
10.0	52.0	51.7	50.8	49.5	48.1	46.8	45.4	44.2	39.6	35.1	31.2	-	-	-	-	-	-	-	-	-
12.0	40.6	40.2	40.0	39.8	39.0	38.2	37.2	36.3	35.5	32.9	29.3	26.3	23.4	20.9	18.9	-	-	-	-	-
14.0	33.1	32.8	32.5	32.3	32.1	31.9	31.3	30.6	30.0	29.2	27.6	24.8	22.1	19.7	17.8	15.8	14.1	12.5	10.9	-
16.0	-	27.6	27.3	27.1	26.9	26.7	26.5	26.3	25.9	25.2	24.0	23.5	20.9	18.6	16.8	14.9	13.3	11.7	10.2	9.1
18.0	-	23.8	23.4	23.2	23.0	22.8	22.5	22.4	22.3	22.0	21.4	21.1	19.8	17.6	15.9	14.1	12.6	11.1	9.6	8.3
20.0	-	-	20.6	20.2	20.0	19.8	19.6	19.5	19.3	19.1	18.9	18.6	18.1	16.7	15.1	13.3	11.9	10.5	9.1	7.8
22.0	-	-	-	17.9	17.6	17.5	17.2	17.1	17.0	16.7	16.5	16.4	16.1	15.7	14.4	12.7	11.3	9.9	8.6	7.3
24.0	-	-	-	-	5.7	15.6	15.3	15.1	15.0	14.8	14.6	14.5	14.2	14.0	13.7	12.1	10.8	9.4	8.1	6.9
26.0	-	-	-	-	-	14.0	13.7	13.5	13.4	13.2	13.0	12.9	12.7	12.5	12.4	11.5	10.3	9.0	7.7	6.6
28.0	-	-	-	-	-	12.7	12.4	12.2	12.1	11.8	11.6	11.5	11.3	11.1	11.1	10.8	9.8	8.6	7.3	6.2
30.0	-	-	-	-	-	-	11.2	11.1	10.9	10.7	10.5	10.4	10.1	9.9	9.9	9.7	9.4	8.2	7.0	5.9
32.0	-	-	-	-	-	-	-	10.1	10.0	9.7	9.5	9.0	9.1	8.9	8.9	8.7	8.4	7.8	6.6	5.6
34.0	-	-	-	-	-	-	-	-	9.1	8.8	8.6	8.5	8.3	8.1	8.0	7.8	7.6	7.3	6.3	5.3
36.0	-	-	-	-	-	-	-	-	8.4	8.1	7.9	7.8	7.5	7.4	7.2	7.0	6.8	6.6	6.0	5.0
38.0	-	-	-	-	-	-	-	-	-	7.4	7.2	7.1	6.8	6.8	6.6	6.3	6.1	5.9	5.7	4.8
40.0	-	-	-	-	-	-	-	-	-	-	6.6	6.5	6.2	6.2	6.0	5.7	5.5	5.3	5.1	4.3
42.0	-	-	-	-	-	-	-	-	-	-	-	6.0	5.8	5.6	5.4	5.2	5.0	4.8	4.5	3.8
44.0	-	-	-	-	-	-	-	-	-	-	-	5.6	5.3	5.1	4.9	4.7	4.5	4.3	4.0	3.4
46.0	-	-	-	-	-	-	-	-	-	-	-	-	4.9	4.7	4.5	4.2	4.0	3.8	3.6	3.0
48.0	-	-	-	-	-	-	-	-	-	-	-	-	-	4.3	4.1	3.8	3.6	3.4	3.2	2.6
50.0	-	-	-	-	-	-	-	-	-	-	-	-	-	-	3.7	3.5	3.2	3.1	2.8	2.2
52.0	-	-	-	-	-	-	-	-	-	-	-	-	-	-	-	-	3.1	2.9	2.7	1.9
54.0	-	-	-	-	-	-	-	-	-	-	-	-	-	-	-	-	2.8	2.6	2.4	1.6
56.0	-	-	-	-	-	-	-	-	-	-	-	-	-	-	-	-	-	2.3	2.1	1.3
58.0	-	-	-	-	-	-	-	-	-	-	-	-	-	-	-	-	-	-	1.9	1.1
60.0	-	-	-	-	-	-	-	-	-	-	-	-	-	-	-	-	-	-	-	1.4



FJ



	40m				43m				46m				49m				
	9.0m		13.5m		9.0m		13.5m		9.0m		13.5m		9.0m		13.5m		
	10°	30°	10°	30°	10°	30°	10°	30°	10°	30°	10°	30°	10°	30°	10°	30°	
12.0	10.0	-	-	-	-	-	-	-	-	-	-	-	-	-	-	-	-
14.0	10.0	-	10.0	-	10.0	-	10.0	-	10.0	-	10.0	-	10.0	-	10.0	-	10.0
16.0	10.0	9.3	10.0	-	10.0	9.3	10.0	-	10.0	9.3	10.0	-	10.0	9.3	10.0	-	10.0
18.0	10.0	9.3	10.0	5.7	10.0	9.3	10.0	5.7	10.0	9.3	10.0	5.7	10.0	9.3	10.0	5.7	10.0
20.0	10.0	9.3	10.0	5.7	10.0	9.3	10.0	5.7	10.0	9.3	10.0	5.7	10.0	9.3	10.0	5.7	10.0
22.0	10.0	9.3	10.0	5.7	10.0	9.3	10.0	5.7	10.0	9.3	10.0	5.7	10.0	9.3	10.0	5.7	10.0
24.0	10.0	9.3	10.0	5.7	10.0	9.3	10.0	5.7	10.0	9.3	10.0	5.7	10.0	9.3	10.0	5.7	10.0
26.0	10.0	9.3	10.0	5.7	10.0	9.3	10.0	5.7	10.0	9.3	10.0	5.7	10.0	9.3	10.0	5.7	10.0
28.0	9.7	9.3	9.7	5.7	9.5	9.3	9.5	5.7	9.4	9.3	9.4	5.7	9.2	9.2	9.2	5.7	5.7
30.0	8.8	8.8	8.8	5.7	8.6	8.6	8.6	5.7	8.4	8.4	8.4	5.7	8.3	8.3	8.3	5.7	5.7
32.0	8.0	8.0	8.0	5.7	7.8	7.8	7.8	5.7	7.6	7.6	7.6	5.7	7.5	7.5	7.5	5.7	5.7
34.0	7.3	7.3	7.3	5.7	7.1	7.1	7.1	5.7	6.9	6.9	6.9	5.7	6.8	6.8	6.8	5.7	5.7
36.0	-	6.7	6.7	5.7	6.5	6.5	6.5	5.7	6.3	6.3	6.3	5.7	6.2	6.2	6.2	5.7	5.7
38.0	-	-	-	-	5.9	5.9	5.9	5.7	5.8	5.8	5.8	5.7	5.6	5.6	5.6	5.6	5.6
40.0	-	-	-	-	-	-	-	-	5.3	5.3	5.3	5.3	5.2	5.2	5.2	5.2	5.2
42.0	-	-	-	-	-	-	-	-	-	-	-	-	4.7	4.7	4.7	4.7	4.7
44.0	-	-	-	-	-	-	-	-	-	-	-	-	4.4	4.4	4.4	4.4	4.4
46.0	-	-	-	-	-	-	-	-	-	-	-	-	-	-	-	-	-

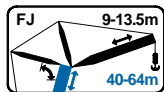


HITACHI KH 500-3 S

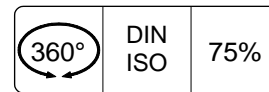
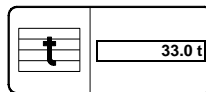
130 TON

Lifting capacities
Capacités

Tragfähigkeiten
Capaciteiten



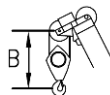
FJ



m	52m				55m				58m				61m			
	9.0m		13.5m		9.0m		13.5m		9.0m		13.5m		9.0m		13.5m	
	10°	30°	10°	30°	10°	30°	10°	30°	10°	30°	10°	30°	10°	30°	10°	30°
	t	t	t	t	t	t	t	t	t	t	t	t	t	t	t	t
14.0	10.0	-	-	-	-	-	-	-	-	-	-	-	-	-	-	-
16.0	10.0	-	10.0	-	10.0	-	10.0	-	10.0	-	-	-	10.0	-	-	-
18.0	10.0	9.3	10.0	-	10.0	9.3	10.0	-	10.0	9.3	10.0	-	10.0	-	10.0	-
20.0	10.0	9.3	10.0	5.7	10.0	9.3	10.0	5.7	10.0	9.3	10.0	5.7	10.0	9.3	10.0	5.7
22.0	10.0	9.3	10.0	5.7	10.0	9.3	10.0	5.7	10.0	9.3	10.0	5.7	10.0	9.3	10.0	5.7
24.0	10.0	9.3	10.0	5.7	10.0	9.3	10.0	5.7	10.0	9.3	10.0	5.7	10.0	9.3	10.0	5.7
26.0	10.0	9.3	10.0	5.7	10.0	9.3	10.0	5.7	9.8	9.3	9.8	5.7	9.3	9.3	9.3	5.7
28.0	9.0	9.0	9.0	5.7	8.9	8.9	8.9	5.7	8.7	8.7	8.7	5.7	8.6	8.6	8.6	5.7
30.0	8.1	8.1	8.1	5.7	8.0	8.0	8.0	5.7	7.8	7.8	7.8	5.7	7.6	7.6	7.6	5.7
32.0	7.3	7.3	7.3	5.7	7.2	7.2	7.2	5.7	7.0	7.0	7.0	5.7	6.8	6.8	6.8	5.7
34.0	6.6	6.6	6.6	5.7	6.5	6.5	6.5	5.7	6.3	6.3	6.3	5.7	6.1	6.1	6.1	5.7
36.0	5.0	6.0	6.0	5.7	5.9	5.9	5.9	5.7	5.7	5.7	5.7	5.7	5.5	5.5	5.5	5.5
38.0	5.5	5.5	5.5	5.5	5.3	5.3	5.3	5.3	5.2	5.2	5.2	5.2	5.0	5.0	5.0	5.0
40.0	5.0	5.0	5.0	5.0	4.8	4.8	4.8	4.8	4.7	4.7	4.7	4.7	4.5	4.5	4.5	4.5
42.0	4.5	4.5	4.5	4.5	4.4	4.4	4.4	4.4	4.2	4.2	4.2	4.2	4.1	4.1	4.1	4.1
44.0	4.2	4.2	4.2	4.2	4.0	4.0	4.0	4.0	3.9	3.9	3.9	3.9	3.7	3.7	3.7	3.7
46.0	3.8	3.8	3.8	3.8	3.7	3.7	3.7	3.7	3.5	3.5	3.5	3.5	3.3	3.3	3.3	3.3
48.0	-	-	-	-	3.4	3.4	3.4	3.4	3.1	3.1	3.1	3.1	2.9	2.9	2.9	2.9
50.0	-	-	-	-	-	-	-	-	2.8	2.8	2.8	2.8	2.5	2.5	2.5	2.5
52.0	-	-	-	-	-	-	-	-	-	-	-	-	2.2	2.2	2.2	2.2
54.0	-	-	-	-	-	-	-	-	-	-	-	-	-	1.9	1.9	1.9

m	64m			
	9.0m		13.5m	
	10°	30°	10°	30°
	t	t	t	t
16.0	10.0	-	-	-
18.0	10.0	-	10.0	-
20.0	9.6	9.3	9.6	5.7
22.0	8.9	8.9	8.9	5.7
24.0	8.3	8.3	8.3	5.7
26.0	7.8	7.8	7.8	5.7
28.0	7.5	7.5	7.5	5.7
30.0	6.9	6.9	6.9	5.7
32.0	6.4	6.4	6.4	5.7
34.0	6.0	6.0	6.0	5.7
36.0	5.4	5.4	5.4	5.4
38.0	4.8	4.8	4.8	4.8
40.0	4.3	4.3	4.3	4.3
42.0	3.9	3.9	3.9	3.9
44.0	3.5	3.5	3.5	3.5
46.0	3.0	3.0	3.0	3.0
48.0	2.6	2.6	2.6	2.6
50.0	2.3	2.3	2.3	2.3
52.0	2.0	2.0	2.0	2.0
54.0	1.7	1.7	1.7	1.7

Hook Block / Crane hook
Crochet mouflé / Crochet simple



Unterflasche / Hakengehänge
Kraanblok / Kraanhaak

Capacity Capacité Tragfähigkeit Capaciteit	Number of sheaves Nombre de poulies Anzahl der Rollen Aantal schijven	Number of lines Nombre de brins Strangzahl Aantal parten	Weight Poids Gewicht Gewicht	"B"
SWL 100 t	4	8	1400 kg	3.2 m
SWL 60 t	2	5	950 kg	3.2 m
SWL 25 t	1	2	730 kg	2.5 m
SWL 10 t	-	1	370 kg	2.0 m