

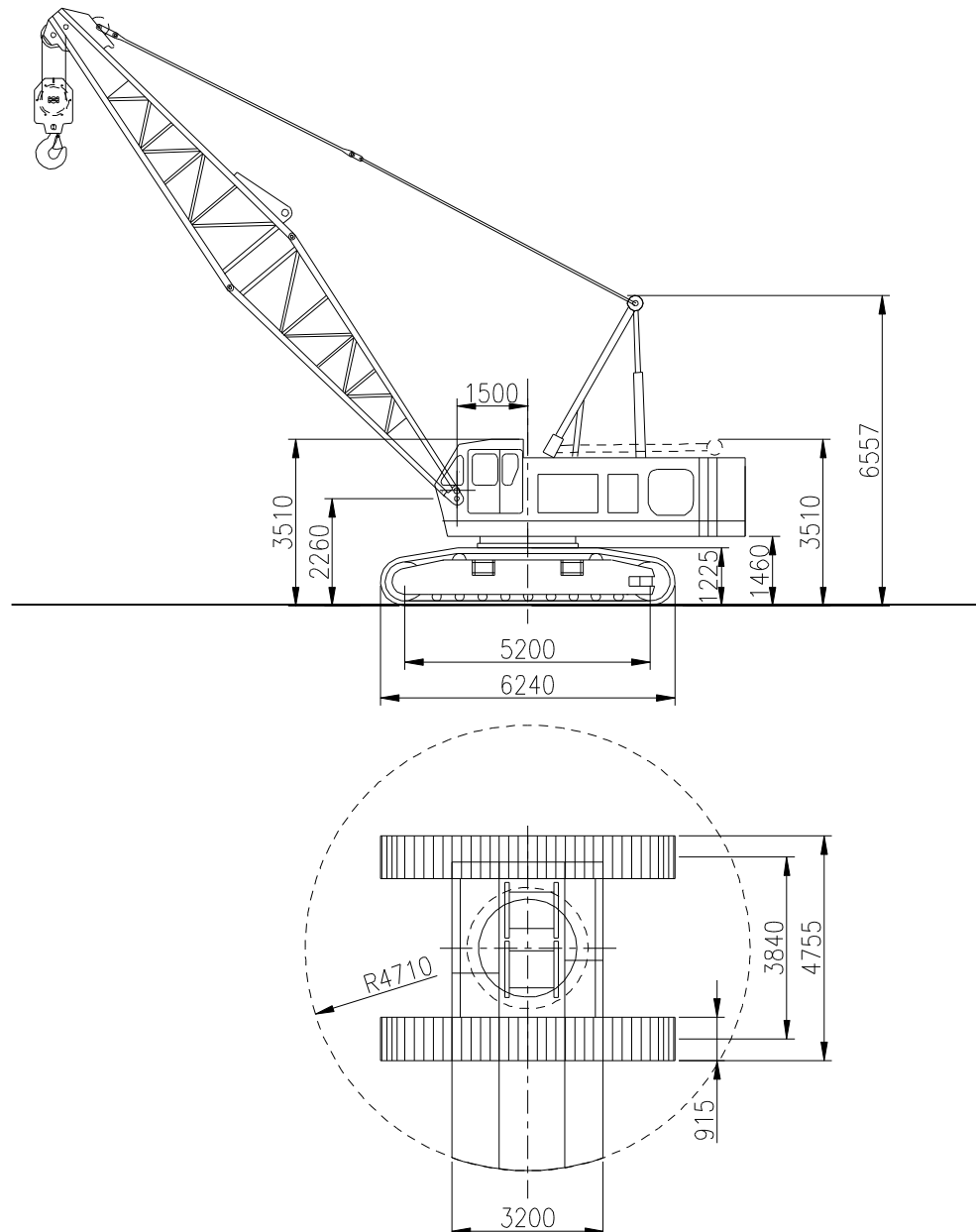


sarens
group

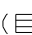
www.sarens.com

HITACHI KH 300-2

80 TON



Operating weight / Poids opérationnel / Betriebsgewicht / Bedrijfsgewicht : 74 t

( 20t)

nothing too heavy, nothing too high





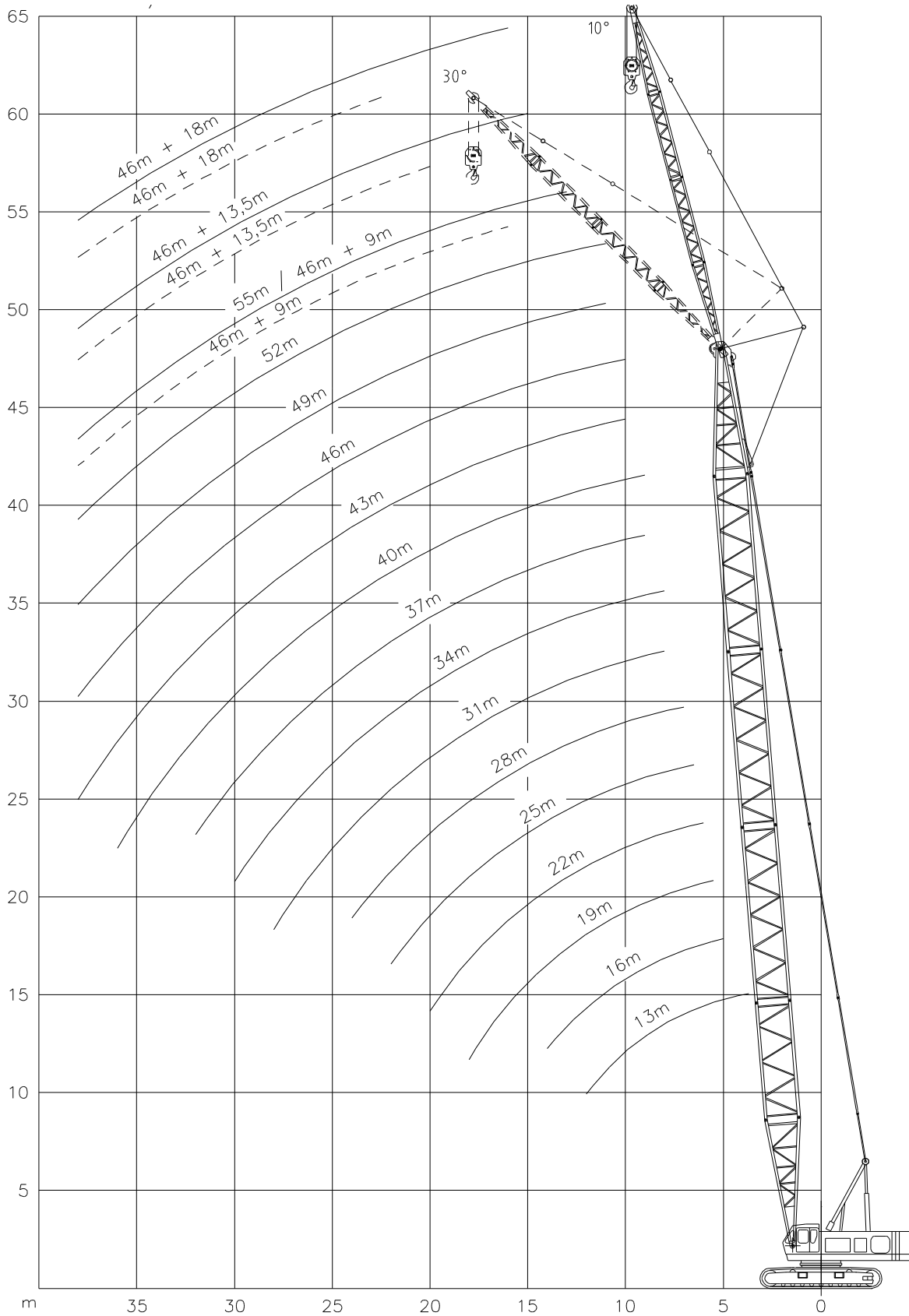
HITACHI KH 300-2

Working ranges
Portées

80 TON

Arbeitsbereiche
Werkbereich

MB - FJ



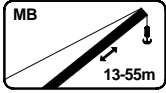


HITACHI KH 300-2

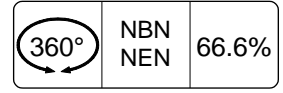
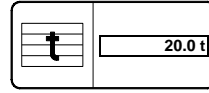
Lifting capacities
Capacités

80 TON

Tragfähigkeiten
Capacités



MB



	13m	16m	19m	22m	25m	28m	31m	34m	37m	40m	43m	46m	49m	52m	55m
	t	t	t	t	t	t	t	t	t	t	t	t	t	t	t
3.7	80.0	-	-	-	-	-	-	-	-	-	-	-	-	-	-
4.0	72.8	-	-	-	-	-	-	-	-	-	-	-	-	-	-
4.5	61.5	-	-	-	-	-	-	-	-	-	-	-	-	-	-
5.0	54.0	53.9	-	-	-	-	-	-	-	-	-	-	-	-	-
5.5	46.4	46.3	46.2	-	-	-	-	-	-	-	-	-	-	-	-
6.0	40.4	40.3	40.2	40.2	-	-	-	-	-	-	-	-	-	-	-
6.5	35.8	35.7	35.6	35.6	35.5	-	-	-	-	-	-	-	-	-	-
7.0	32.1	32.0	31.9	31.9	31.8	31.7	-	-	-	-	-	-	-	-	-
8.0	26.6	26.4	26.3	26.3	26.2	26.1	26.0	25.9	-	-	-	-	-	-	-
9.0	22.6	22.5	22.4	22.3	22.2	22.1	22.1	22.0	21.9	21.8	-	-	-	-	-
10.0	19.6	19.5	19.4	19.3	19.2	19.1	19.1	19.0	18.9	18.8	18.8	17.0	-	-	-
11.0	17.2	17.1	17.0	17.0	16.9	16.8	16.7	16.6	16.5	16.5	16.4	16.4	14.7	12.8	-
12.0	15.4	15.3	15.2	15.1	15.0	14.9	14.9	14.7	14.7	14.6	14.6	14.5	14.4	12.8	11.9
14.0	-	12.5	12.4	12.3	12.2	12.1	12.0	11.9	11.9	11.8	11.7	11.7	11.6	11.5	11.0
16.0	-	-	10.3	10.3	10.2	10.1	10.0	9.9	9.8	9.8	9.7	9.7	9.6	9.5	9.4
18.0	-	-	8.8	8.8	8.7	8.6	8.5	8.4	8.3	8.3	8.2	8.1	8.1	8.0	7.9
20.0	-	-	-	7.6	7.5	7.4	7.3	7.2	7.2	7.1	7.0	6.9	6.8	6.7	6.6
22.0	-	-	-	-	6.6	6.5	6.4	6.3	6.2	6.2	6.1	6.0	5.9	5.8	5.6
24.0	-	-	-	-	-	5.7	5.6	5.5	5.4	5.3	5.2	5.1	5.0	4.9	4.8
26.0	-	-	-	-	-	-	5.0	4.9	4.8	4.7	4.6	4.5	4.4	4.3	4.2
28.0	-	-	-	-	-	-	4.4	4.3	4.2	4.1	4.0	3.9	3.8	3.7	3.6
30.0	-	-	-	-	-	-	-	3.8	3.7	3.6	3.5	3.4	3.3	3.2	3.0
32.0	-	-	-	-	-	-	-	-	3.2	3.1	3.0	2.9	2.8	2.7	2.6
34.0	-	-	-	-	-	-	-	-	-	2.7	2.6	2.5	2.4	2.3	2.1
36.0	-	-	-	-	-	-	-	-	-	2.3	2.2	2.1	2.0	1.9	1.8
38.0	-	-	-	-	-	-	-	-	-	-	1.9	1.8	1.7	1.6	1.4

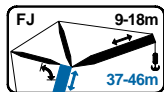


HITACHI KH 300-2

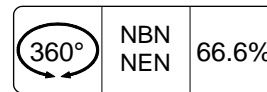
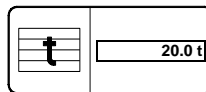
80 TON

Lifting capacities
Capacités

Tragfähigkeiten
Capaciteiten



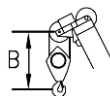
FJ



m	37m						40m					
	9.0m		13.5m		18.0m		9.0m		13.5m		18.0m	
	10°	30°	10°	30°	10°	30°	10°	30°	10°	30°	10°	30°
	t	t	t	t	t	t	t	t	t	t	t	t
12.0	8.0	-	-	-	-	-	8.0	-	-	-	-	-
13.0	8.0	-	6.3	-	-	-	8.0	-	-	-	-	-
14.0	8.0	-	6.3	-	-	-	8.0	-	6.3	-	-	-
15.0	8.0	5.0	6.3	-	3.5	-	8.0	5.0	6.3	-	3.5	-
16.0	8.0	5.0	6.3	-	3.5	-	8.0	5.0	6.3	-	3.5	-
18.0	8.0	5.0	6.3	3.6	3.5	-	8.0	5.0	6.3	3.6	3.5	-
20.0	6.1	5.0	6.1	3.6	3.5	2.4	6.0	5.0	6.0	3.6	3.5	2.4
22.0	5.3	5.0	5.2	3.6	3.5	2.4	5.2	5.0	5.2	3.6	3.5	2.4
24.0	4.6	4.6	4.6	3.6	3.5	2.4	4.5	4.5	4.5	3.6	3.5	2.4
26.0	4.0	4.0	4.0	3.6	3.5	2.4	3.9	3.9	3.9	3.6	3.5	2.4
28.0	3.6	3.6	3.6	3.6	3.5	2.4	3.5	3.5	3.5	3.5	3.5	2.4
30.0	3.1	3.1	3.1	3.1	2.9	2.4	3.0	3.0	3.0	3.0	2.9	2.4
32.0	2.7	2.7	2.7	2.7	2.7	2.4	2.6	2.6	2.6	2.6	2.6	2.4
34.0	-	-	-	-	-	-	2.2	2.2	2.2	2.2	2.2	2.0
36.0	-	-	-	-	-	-	1.9	1.9	1.9	1.9	1.9	1.9

m	43m						46m					
	9.0m		13.5m		18.0m		9.0m		13.5m		18.0m	
	10°	30°	10°	30°	10°	30°	10°	30°	10°	30°	10°	30°
	t	t	t	t	t	t	t	t	t	t	t	t
13.0	8.0	-	-	-	-	-	8.0	-	-	-	-	-
14.0	8.0	-	6.3	-	-	-	8.0	-	-	-	-	-
15.0	8.0	-	6.3	-	-	-	8.0	-	6.3	-	-	-
16.0	8.0	5.0	6.3	-	3.5	-	8.0	5.0	6.3	-	3.5	-
18.0	8.0	5.0	6.3	3.6	3.5	-	8.0	5.0	6.3	-	3.5	-
20.0	7.0	5.0	6.3	3.6	3.5	-	6.9	5.0	6.3	3.6	3.5	-
22.0	6.1	5.0	6.1	3.6	3.5	2.4	6.0	5.0	6.0	3.6	3.5	2.4
24.0	5.2	5.0	5.2	3.6	3.5	2.4	5.1	5.0	5.1	3.6	3.5	2.4
26.0	4.6	4.6	4.6	3.6	3.5	2.4	4.5	4.5	4.5	3.6	3.5	2.4
28.0	4.0	4.0	4.0	3.6	3.5	2.4	3.9	3.9	3.9	3.6	3.5	2.4
30.0	3.5	3.5	3.5	3.5	3.5	2.4	3.4	3.4	3.4	3.4	3.4	2.4
32.0	3.0	3.0	3.0	3.0	3.0	2.4	2.9	2.9	2.9	2.9	2.9	2.4
34.0	2.6	2.6	2.6	2.6	2.6	2.4	2.5	2.5	2.5	2.5	2.5	2.4
36.0	2.2	2.2	2.2	2.2	2.2	2.2	2.1	2.1	2.1	2.1	2.1	2.1
38.0	1.9	1.9	1.9	1.9	1.9	1.9	1.8	1.8	1.8	1.8	1.8	1.8

Hook Block / Crane hook
Crochet mouflé / Crochet simple



Unterflasche / Hakengehänge
Kraanblok / Kraanhaak

Capacity Capacité Tragfähigkeit Capaciteit	Number of sheaves Nombre de poulies Anzahl der Rollen Aantal schijven	Number of lines Nombre de brins Strangzahl Aantal parten	Weight Poids Gewicht Gewicht	"B"
SWL 80 t	5	10	1170 kg	2.5 m
SWL 40 t	2	5	660 kg	2.5 m
SWL 15 t	1	2	440 kg	2.5 m
SWL 8 t	-	1	260 kg	3.1 m