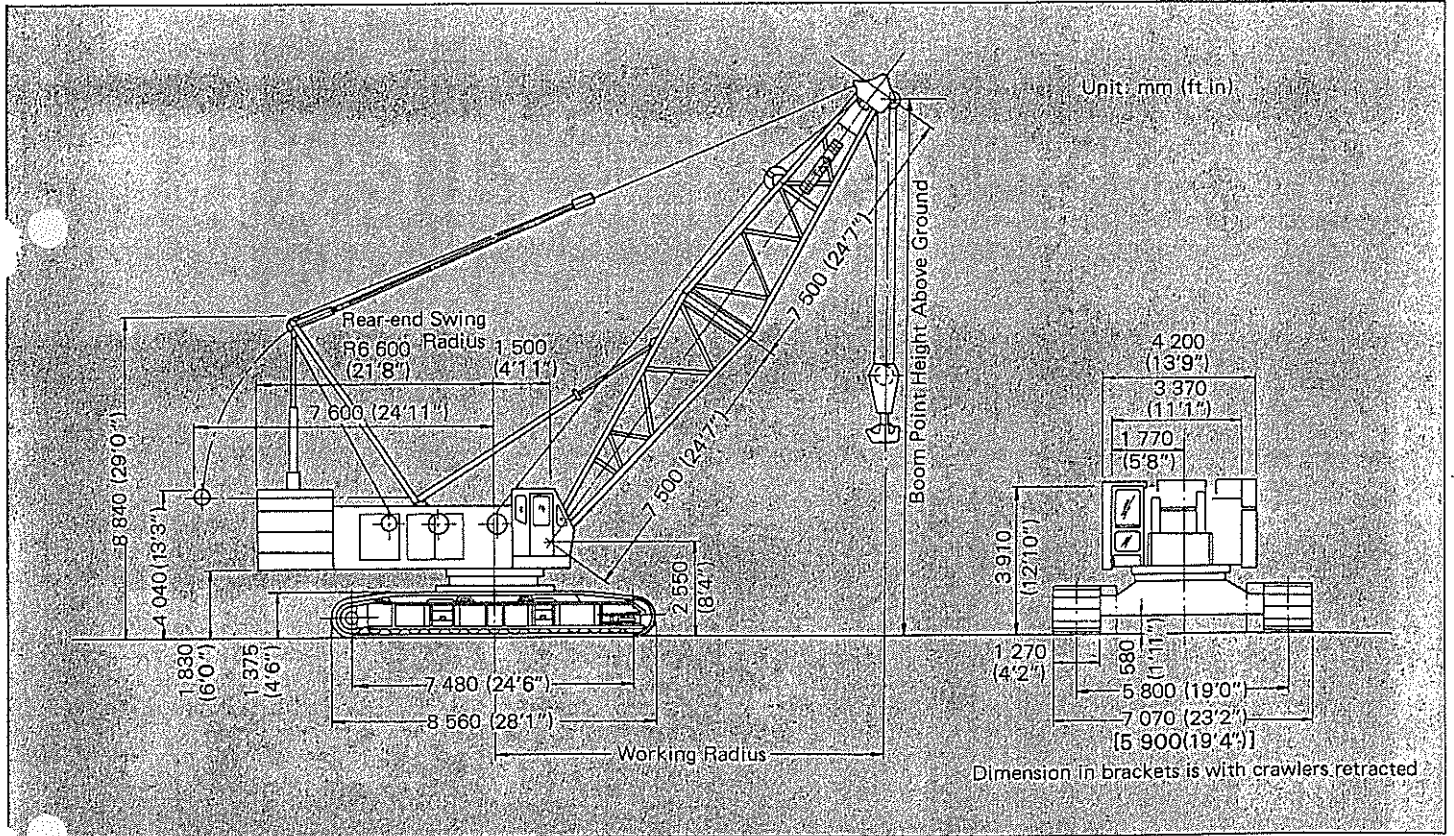


CRAWLER CRANE

With Tubular CRANE Boom

Dimensions



Specifications

Maximum rated load		200 000 kg (441 000 lb) at 5.0 m (16'5") working radius
Boom	Basic boom length	15.0 m (49'3") (Heavy-duty service)
	Max. boom length	93.0 m (305'1") (Light-duty service)
	Jib length	13.0 m (42'8") – 31.0 m (101'9")
	Max. boom with jib length	109.0 m (357'7") [78.0 m (255'11") boom plus 31.0 m (101'8") jib]
Swing speed		0 – 2.1 min ⁻¹ (0 – 2.1 rpm)
Travel speed	High	0 – 0.95 km/h (0 – 0.59 mph)
	Low	0 – 0.47 km/h (0 – 0.29 mph)
Gradeability		17° (30%)
Ground pressure		0.85 bar (0.85 kgf/cm ² , 12.1 psi)
Operating weight	Equipped with basic boom, 200 000 kg (441 000 lb) capacity hook and 60 000 kg (132 000 lb) counterweight	170 000 kg (375 000 lb)
Engine	Model	Isuzu 12PB1
	Rated horsepower	199 kW (270 PS) at 2 000 min ⁻¹ (2 000 rpm)

HOOKS

Capacity kg (lb)	Hook weight kg (lb)	Number of hoist reeving and maximum rated load kg (lb)								
		18	16	14	12	11	10	9	8	7
200 000 (441 000)	2 600 (5 730)	200 000 (441 000)	187 500 (413 000)	167 000 (368 000)	146 000 (322 000)	135 000 (298 000)	124 000 (273 000)	112 500 (248 000)	100 000 (220 000)	87 500 (193 000)
100 000 (220 000)	1 400 (3 090)								100 000 (220 000)	87 500 (193 000)

Capacity (lb)	Hook weight kg (lb)	Number of hoist reeving and maximum rated load kg (lb)						Remarks
		6	5	4	3	2	1	
200 000 (441 000)	2 600 (5 730)							Heavy-duty service
100 000 (220 000)	1 400 (3 090)	75 000 (165 000)	62 500 (138 000)	50 000 (110 000)	37 500 (82 700)	25 000 (55 000)		Heavy- and light-duty services
60 000 (132 000)	1 200 (2 650)		62 500 (138 000)	50 000 (110 000)	37 500 (82 700)	25 000 (55 000)		
25 000 (55 000)	850 (1 870)					25 000 (55 000)		
12 500 (27 600)	500 (1 100)						12 500 (27 600)	Optional for jib

DRUMS

Dimensions

	Rope dia.	Width	Drum p.c.d.	Max. rope capacity
Main hoist drum	28 mm (1.10")	992 mm (39.1")	624 mm (24.6")	373 m (1 220') (5th layer) (in operation)* 760 m (2 490') (9th layer) (not in operation)
Aux. hoist drum	28 mm (1.10")	992 mm (39.1")	624 mm (24.6")	

Note: *Determined by brake capacity, drum strength and resistance to miswindings.

Line speed and line pull

	Max. line speed m/min. (ft/min)				Effective line pull	@ Line speed	Max. running line pull	Max. starting line pull
	Hoisting		Lowering					
Main hoist drum	E	85 (279)	E	85 (279)	78 kN (8 000 kgf) (17 600 lbf)	@ 75 m/min (246 ft/min)	118 kN (12 000 kgf) (26 400 lbf)	108 kN (11 000 kgf) (24 200 lbf)
	H	48 (157)	H	48 (157)	177 kN (18 000 kgf) (39 680 lbf)	@ 40 m/min (131 ft/min)	245 kN (25 000 kgf) (55 110 lbf)	225 kN (23 000 kgf) (50 700 lbf)
	L	24 (78.7)	L	24 (78.7)				
Aux. hoist drum	E	85 (279)	E	85 (279)	78 kN (8 000 kgf) (17 600 lbf)	@ 75 m/min (246 ft/min)	118 kN (12 000 kgf) (26 400 lbf)	108 kN (11 000 kgf) (24 200 lbf)
	H	48 (157)	H	48 (157)	177 kN (18 000 kgf) (39 680 lbf)	@ 40 m/min (131 ft/min)	245 kN (25 000 kgf) (55 110 lbf)	225 kN (23 000 kgf) (50 700 lbf)
	L	24 (78.7)	L	24 (78.7)				

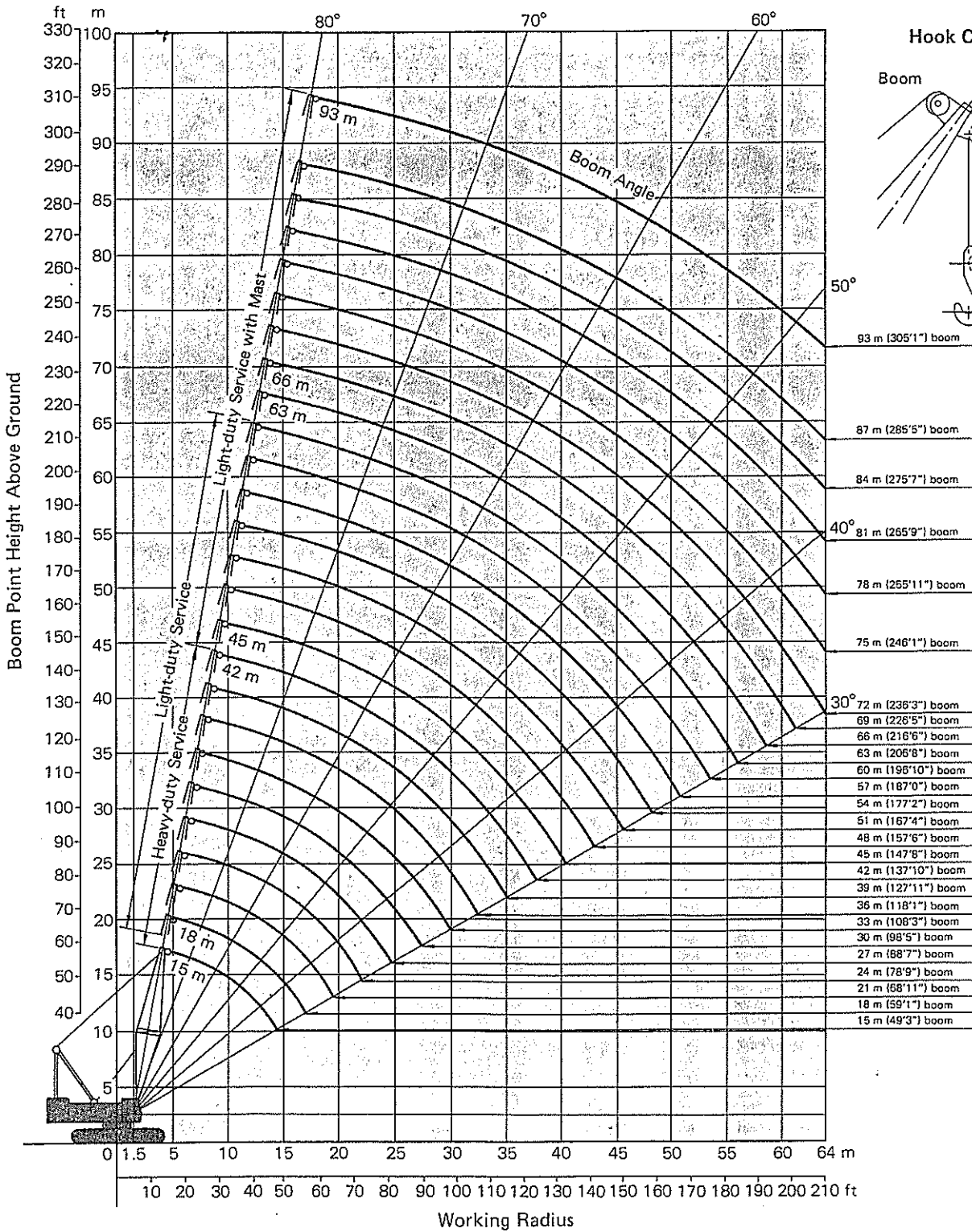
E: Extra high speed range H: High speed range L: Low speed range

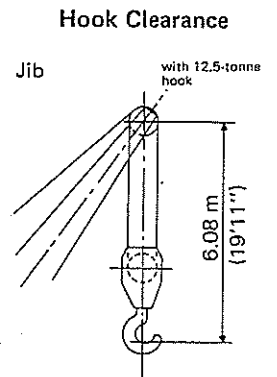
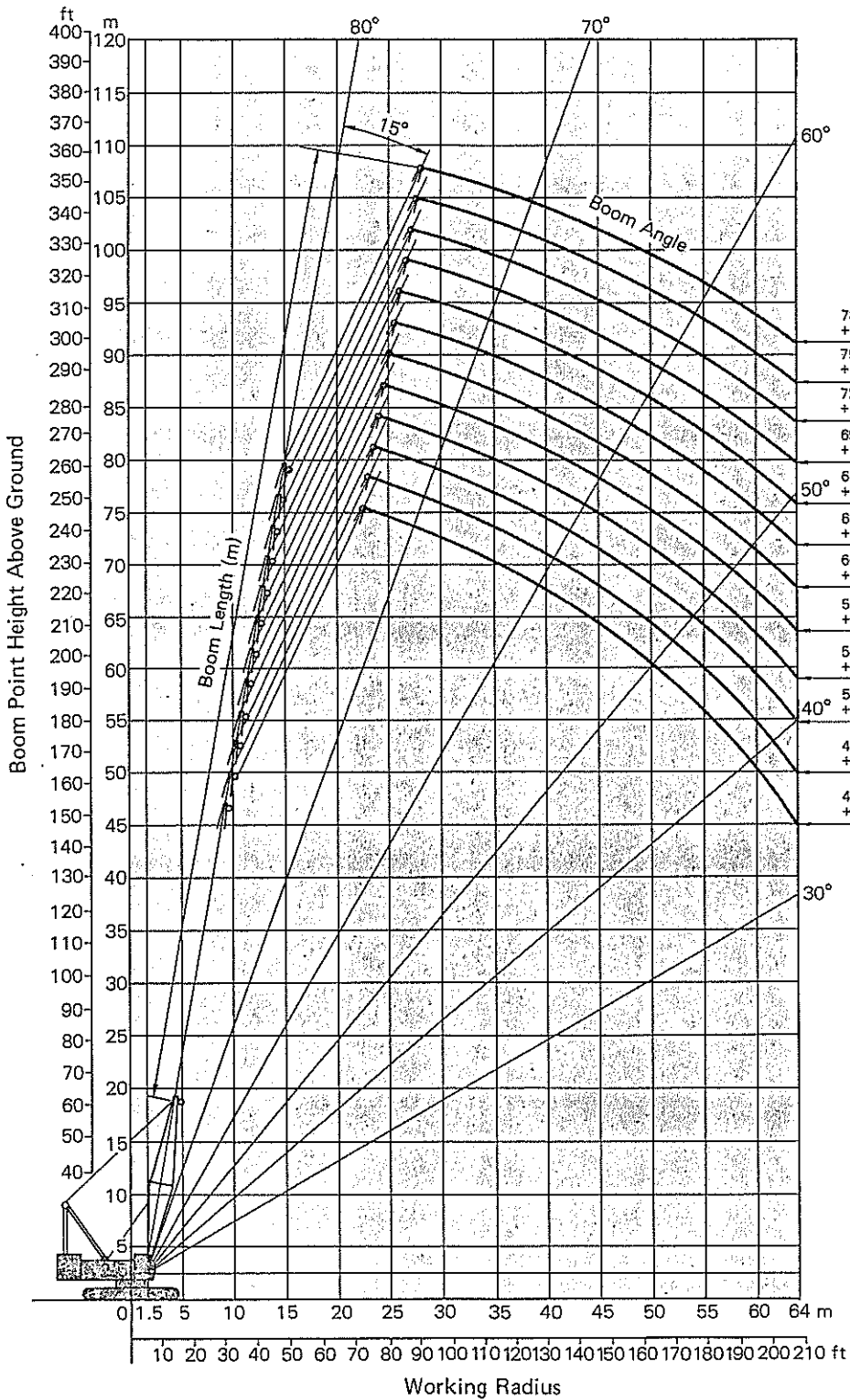
Notes: 1) Line speed and line pull are based on first layer of winding at rated engine rpm.
 2) Hoisting line speed varies with load.
 3) Line pull is based on a single line pull in high speed range.
 4) Effective line pull is equivalent to available line pull of mechanical drive winch.

BOOM HOIST DRUM (Twin Drum)

Rope diameter	Hoisting line speed	Lowering line speed
22 mm (0.87")	20 m/min (65.5 ft/min) x 2	20 m/min (65.5 ft/min) x 2

Working Ranges





Crane Ratings

BS Rating

The rated loads are determined according to BS (British Standard; 1981) and the machine is standing on firm level ground.

PCSA Rating

The rated loads, listed are determined according to PCSA (Power Crane and Shovel Association in U.S.A.) and do not exceed 75% of tipping load on condition that the machine is stationed on firm, level ground.

Tubular Chord Crane Boom in 360° Working Area Heavy-duty Service without Mast

BOOM LENGTH m (ft. in.)	WORKING RADIUS		BOOM ANGLE degree	BOOM POINT HEIGHT		RATED LOAD		LOAD RATING	
	m	ft. in.		m	ft. in.	BS kg	RATING lb	PCSA kg	RATING lb
15.0 (49' 2")	4.5	14' 9"	79.99	17.3	56' 9"	200 000	440 900	200 000	440 900
	5.0	16' 4"	78.04	17.1	56' 1"	199 000	438 700	200 000	440 900
	5.5	18' 0"	76.07	17.0	55' 9"	180 600	398 100	180 600	398 100
	6.0	19' 8"	74.08	16.9	55' 5"	164 500	362 600	164 500	362 600
	6.5	21' 3"	72.06	16.7	54' 9"	150 900	332 600	150 900	332 600
	7.0	22' 11"	70.03	16.5	54' 1"	139 200	306 800	139 200	306 800
	8.0	26' 2"	65.86	16.1	52' 9"	122 000	268 900	114 900	253 300
	9.0	29' 6"	61.54	15.5	50' 10"	101 100	222 800	95 200	209 800
	10.0	32' 9"	57.02	14.9	48' 10"	87 000	191 800	81 200	179 000
	12.0	39' 4"	47.12	13.3	43' 7"	66 400	146 300	62 600	138 000
	14.0	45' 11"	35.12	10.9	35' 9"	53 900	118 800	50 800	111 900
14.7	48' 2"	30.00	9.7	31' 9"	50 600	111 500	47 600	104 900	
18.0 (57' 10")	5.0	16' 4"	80.00	20.2	66' 3"	181 600	400 300	193 600	426 800
	5.5	18' 0"	78.44	20.1	65' 11"	177 800	391 900	180 200	397 200
	6.0	19' 8"	76.80	20.0	65' 7"	164 100	361 700	164 100	361 700
	6.5	21' 3"	75.15	19.8	64' 11"	150 500	331 700	150 500	331 700
	7.0	22' 11"	73.49	19.7	64' 7"	138 800	306 000	138 800	306 000
	8.0	26' 2"	70.11	19.3	63' 3"	121 600	268 000	114 500	252 400
	9.0	29' 6"	66.65	18.9	62' 0"	100 700	222 000	94 900	209 200
	10.0	32' 9"	63.10	18.4	60' 4"	85 800	189 100	80 800	178 100
	12.0	39' 4"	55.60	17.2	56' 5"	66 000	145 500	62 100	136 900
	14.0	45' 11"	47.30	15.5	50' 10"	53 400	117 700	50 300	110 800
	16.0	52' 5"	37.63	13.2	43' 3"	44 800	98 760	42 100	92 810
17.3	56' 9"	30.00	11.2	36' 8"	40 500	89 280	38 100	83 990	
21.0 (68' 10")	5.5	18' 0"	80.00	23.2	76' 1"	163 100	359 500	178 200	392 800
	6.0	19' 8"	78.72	23.1	75' 9"	159 800	352 200	163 800	361 100
	6.5	21' 3"	77.32	23.0	75' 5"	150 200	331 100	150 200	331 100
	7.0	22' 11"	75.91	22.8	74' 9"	138 500	305 300	138 500	305 300
	8.0	26' 2"	73.06	22.5	73' 9"	121 400	267 600	114 400	252 200
	9.0	29' 6"	70.17	22.2	72' 10"	100 600	221 700	94 700	208 700
	10.0	32' 9"	67.22	21.8	71' 6"	85 600	188 700	80 600	177 600
	12.0	39' 4"	61.10	20.7	67' 11"	65 800	145 000	61 900	136 400
	14.0	45' 11"	54.57	19.4	63' 7"	53 100	117 000	50 000	110 200
	16.0	52' 5"	47.43	17.7	58' 0"	44 400	97 880	41 800	92 150
	18.0	59' 0"	39.32	15.5	50' 10"	38 100	83 990	35 800	78 920
19.9	65' 3"	30.00	12.7	41' 8"	33 500	73 850	31 500	69 440	

BOOM LENGTH	WORKING RADIUS		BOOM ANGLE	BOOM POINT HEIGHT		RATED		LOAD	
	m	ft-in		m	ft-in	BS RATING	PCSA RATING	kg	lb
24.0 (88' 6")	6.1	20' 0"	79.91	26.1	85' 7"	147 400	324 900	160 200	353 100
	6.5	21' 3"	78.93	26.0	85' 3"	145 100	319 800	149 900	330 400
	7.0	22' 11"	77.71	25.9	84' 11"	138 200	304 600	138 200	304 600
	8.0	26' 2"	75.24	25.7	84' 3"	121 300	267 400	114 300	251 900
	9.0	29' 6"	72.75	25.4	83' 4"	100 400	221 300	94 600	208 500
	10.0	32' 9"	70.22	25.0	82' 0"	85 500	188 400	80 500	177 400
	12.0	39' 4"	65.01	24.1	79' 0"	65 600	144 600	61 800	136 200
	14.0	45' 11"	59.57	23.0	75' 5"	53 000	116 800	49 900	110 000
	16.0	52' 5"	53.79	21.7	71' 2"	44 200	97 440	41 600	91 710
	18.0	59' 0"	47.53	20.0	65' 7"	37 900	83 550	35 600	78 480
	20.0	65' 7"	40.54	17.8	58' 4"	33 000	72 750	31 100	68 560
	22.0	72' 2"	32.30	15.0	49' 2"	29 200	64 370	27 500	60 620
22.5	73' 9"	30.00	14.2	46' 7"	28 500	62 830	26 700	58 860	
27.0 (88' 7")	6.6	21' 7"	79.96	29.1	95' 5"	134 400	296 300	143 300	315 900
	7.0	22' 11"	79.10	29.0	95' 1"	132 400	291 800	137 900	304 000
	8.0	26' 2"	76.92	28.8	94' 5"	121 200	267 200	114 100	251 500
	9.0	29' 6"	74.72	28.5	93' 6"	100 300	221 100	94 400	208 100
	10.0	32' 9"	72.50	28.2	92' 6"	85 300	188 000	80 300	177 000
	12.0	39' 4"	67.97	27.4	89' 10"	65 400	144 100	61 500	135 500
	14.0	45' 11"	63.27	26.5	86' 11"	52 700	116 100	49 600	109 300
	16.0	52' 5"	58.37	25.3	83' 0"	44 000	97 000	41 400	91 270
	18.0	59' 0"	53.18	23.9	78' 4"	37 600	82 890	35 300	77 820
	20.0	65' 7"	47.60	22.2	72' 10"	32 700	72 090	30 700	67 680
	22.0	72' 2"	41.46	20.1	65' 11"	28 900	63 710	27 100	59 740
	24.0	78' 8"	34.42	17.5	57' 5"	25 800	56 870	24 200	53 350
25.1	82' 4"	30.00	15.7	51' 6"	24 400	53 790	22 900	50 480	
30.0 (98' 5")	7.1	23' 3"	80.00	32.0	104' 11"	123 800	272 900	127 300	280 600
	8.0	26' 2"	78.25	31.8	104' 4"	120 000	264 500	114 000	251 300
	9.0	29' 6"	76.29	31.6	103' 8"	100 100	220 600	94 300	207 800
	10.0	32' 9"	74.31	31.3	102' 8"	85 200	187 800	80 200	176 800
	12.0	39' 4"	70.28	30.7	100' 8"	65 200	143 700	61 400	135 300
	14.0	45' 11"	66.14	29.8	97' 9"	52 500	115 700	49 400	108 900
	16.0	52' 5"	61.86	28.8	94' 5"	43 800	96 560	41 200	90 830
	18.0	59' 0"	57.40	27.6	90' 6"	37 400	82 450	35 100	77 380
	20.0	65' 7"	52.69	26.2	85' 11"	32 500	71 650	30 500	67 240
	22.0	72' 2"	47.66	24.5	80' 4"	28 600	63 050	26 900	59 300
	24.0	78' 8"	42.18	22.4	73' 5"	25 500	56 210	24 000	52 910
	26.0	85' 3"	36.02	19.9	65' 3"	23 000	50 700	21 600	47 620
27.7	90' 10"	30.00	17.2	56' 5"	21 200	46 730	19 900	43 870	

BOOM LENGTH	WORKING RADIUS		BOOM ANGLE	BOOM POINT HEIGHT		RATED LOAD			
	m	ft. in.		m	ft. in.	BS RATING		PCSA RATING	
m (ft. in.)	m	ft. in.	degree	m	ft. in.	kg	lb	kg	lb
33.0 (108' 3")	7.6	24' 11"	80.00	35.0	114' 10"	114 500	252 400	114 900	253 300
	8.0	26' 2"	79.34	34.9	114' 6"	113 000	249 100	113 400	250 000
	9.0	29' 6"	77.56	34.7	113' 10"	100 000	220 400	94 200	207 600
	10.0	32' 9"	75.77	34.4	112' 10"	85 000	187 300	80 100	176 500
	12.0	39' 4"	72.14	33.8	110' 10"	65 100	143 500	61 300	135 100
	14.0	45' 11"	68.44	33.1	108' 7"	52 400	115 500	49 300	108 600
	16.0	52' 5"	64.63	32.2	105' 7"	43 600	96 120	41 000	90 390
	18.0	59' 0"	60.70	31.1	102' 0"	37 200	82 010	35 000	77 160
	20.0	65' 7"	56.60	29.9	98' 1"	32 300	71 200	30 400	67 020
	22.0	72' 2"	52.29	28.4	93' 2"	28 500	62 830	26 700	58 860
	24.0	78' 8"	47.71	26.7	87' 7"	25 300	55 770	23 800	52 470
	26.0	85' 3"	42.76	24.7	81' 0"	22 800	50 260	21 400	47 170
	28.0	91' 10"	37.28	22.2	72' 10"	20 700	45 630	19 400	42 760
	30.0	98' 5"	30.97	19.2	62' 11"	18 900	41 660	17 700	39 020
	30.3	99' 4"	30.00	18.7	61' 4"	18 700	41 220	17 500	38 580
36.0 (118' 1")	8.1	26' 6"	80.00	37.9	124' 4"	102 700	226 400	102 700	226 400
	9.0	29' 6"	78.61	37.8	124' 0"	99 800	220 000	94 000	207 200
	10.0	32' 9"	76.98	37.5	123' 0"	84 800	186 900	79 900	176 100
	12.0	39' 4"	73.68	37.0	121' 4"	64 900	143 000	61 100	134 700
	14.0	45' 11"	70.32	36.3	119' 1"	52 200	115 000	49 100	108 200
	16.0	52' 5"	66.89	35.5	116' 5"	43 400	95 680	40 800	89 940
	18.0	59' 0"	63.36	34.5	113' 2"	37 000	81 570	34 700	76 500
	20.0	65' 7"	59.72	33.4	109' 7"	32 000	70 540	30 100	66 350
	22.0	72' 2"	55.93	32.1	105' 3"	28 200	62 170	26 500	58 420
	24.0	78' 8"	51.96	30.7	100' 8"	25 100	55 330	23 500	51 800
	26.0	85' 3"	47.75	28.9	94' 9"	22 500	49 600	21 100	46 510
	28.0	91' 10"	43.24	26.9	88' 3"	20 300	44 750	19 900	43 870
	30.0	98' 5"	38.30	24.5	80' 4"	18 500	40 780	17 400	38 360
	32.0	104' 11"	32.73	21.7	71' 2"	17 000	37 470	15 900	35 050
	32.9	107' 11"	30.00	20.2	66' 3"	16 400	36 150	15 400	33 950

BOOM LENGTH	WORKING RADIUS		BOOM ANGLE	BOOM POINT HEIGHT		RATED LOAD		RATED LOAD	
	m	ft in		m	ft in	BS RATING	BS RATING	FGSA RATING	FGSA RATING
m (ft in)	m	ft in	deg sec	m	ft in	kg	lb	kg	lb
59.0 (127' 11")	8.7	28' 6"	79.95	40.9	134' 2"	93 400	205 900	93 400	205 900
	9.0	29' 6"	79.50	40.8	133' 10"	92 500	203 900	92 500	203 900
	10.0	32' 9"	78.00	40.6	133' 2"	84 700	186 700	79 700	175 700
	12.0	39' 4"	74.97	40.1	131' 6"	64 700	142 600	60 900	134 200
	14.0	45' 11"	71.89	39.5	129' 7"	52 000	114 600	48 900	107 800
	16.0	52' 5"	68.76	38.8	127' 3"	43 200	95 240	40 700	89 720
	18.0	59' 0"	65.56	37.9	124' 4"	36 800	81 130	34 600	76 280
	20.0	65' 7"	62.27	36.9	121' 0"	31 900	70 320	29 900	65 910
	22.0	72' 2"	58.88	35.7	117' 1"	28 000	61 720	26 300	57 980
	24.0	78' 8"	55.36	34.4	112' 10"	24 900	54 890	23 300	51 360
	26.0	85' 3"	51.67	32.9	107' 11"	22 300	49 160	20 900	46 070
	28.0	91' 10"	47.79	31.2	102' 4"	20 100	44 310	18 900	41 660
	30.0	98' 5"	43.64	29.2	95' 9"	18 300	40 340	17 200	37 910
	32.0	104' 11"	39.14	26.9	88' 3"	16 800	37 030	15 700	34 610
	34.0	111' 6"	34.15	24.1	79' 0"	15 400	33 950	14 400	31 740
35.5	116' 5"	30.00	21.7	71' 2"	14 500	31 960	13 600	29 980	
42.0 (137' 9")	9.2	30' 2"	79.98	43.8	143' 8"	84 500	186 200	84 500	186 200
	10.0	32' 9"	78.87	43.7	143' 4"	82 700	182 300	79 700	175 700
	12.0	39' 4"	76.07	43.2	141' 8"	64 600	142 400	60 800	134 000
	14.0	45' 11"	73.23	42.6	139' 9"	51 900	114 400	48 800	107 500
	16.0	52' 5"	70.35	42.0	137' 9"	43 100	95 010	40 500	89 280
	18.0	59' 0"	67.41	41.2	135' 2"	36 700	80 910	34 500	76 050
	20.0	65' 7"	64.41	40.3	132' 2"	31 700	69 880	29 800	65 690
	22.0	72' 2"	61.33	39.2	128' 7"	27 900	61 500	26 200	57 760
	24.0	78' 8"	58.15	38.0	124' 8"	24 700	54 450	23 200	51 140
	26.0	85' 3"	54.86	36.7	120' 4"	22 100	48 720	20 800	45 850
	28.0	91' 10"	51.43	35.1	115' 1"	20 000	44 090	18 700	41 220
	30.0	98' 5"	47.82	33.4	109' 7"	18 100	39 900	17 000	37 470
	32.0	104' 11"	43.98	31.4	103' 0"	16 600	36 590	15 500	34 170
	34.0	111' 6"	39.85	29.2	95' 9"	15 200	33 510	14 200	31 300
	36.0	118' 1"	35.32	26.5	86' 11"	14 000	30 860	13 100	28 880
38.0	124' 8"	30.20	23.3	76' 5"	13 000	28 660	12 200	26 890	
38.1	125' 0"	30.00	23.2	76' 1"	13 000	28 660	12 100	26 670	

Light-duty Service without Mast

BOOM LENGTH	WORKING RADIUS		BOOM ANGLE	BOOM POINT HEIGHT		RATED LOAD			
						BS RATING		PCSA RATING	
m (ft. in)	m	ft. in	degree	m	ft. in	kg	lb	kg	lb
18.0 (59'0")	5.0	16' 4"	80.00	20.2	66' 3"	100 000	220 400	100 000	220 400
	5.5	18' 0"	78.44	20.1	65' 11"	100 000	220 400	100 000	220 400
	6.0	19' 8"	76.80	20.0	65' 7"	100 000	220 400	100 000	220 400
	6.5	21' 3"	75.15	19.8	64' 11"	100 000	220 400	100 000	220 400
	7.0	22' 11"	73.49	19.7	64' 7"	100 000	220 400	100 000	220 400
	8.0	26' 2"	70.11	19.3	63' 3"	100 000	220 400	100 000	220 400
	9.0	29' 6"	66.65	18.9	62' 0"	100 000	220 400	96 000	211 600
	10.0	32' 9"	63.10	18.4	60' 4"	87 100	192 000	82 000	180 700
	12.0	39' 4"	55.60	17.2	56' 5"	67 200	148 100	63 300	139 500
	14.0	45' 11"	47.30	15.5	50' 10"	54 600	120 300	51 400	113 300
16.0	52' 5"	37.63	13.2	43' 3"	45 800	100 900	43 200	95 240	
17.3	56' 9"	30.00	11.2	36' 8"	41 500	91 490	39 100	86 200	
21.0 (68'10")	5.5	18' 0"	80.00	23.2	76' 1"	100 000	220 400	100 000	220 400
	6.0	19' 8"	78.72	23.1	75' 9"	100 000	220 400	100 000	220 400
	6.5	21' 3"	77.32	23.0	75' 5"	100 000	220 400	100 000	220 400
	7.0	22' 11"	75.91	22.8	74' 9"	100 000	220 400	100 000	220 400
	8.0	26' 2"	73.06	22.5	73' 9"	100 000	220 400	100 000	220 400
	9.0	29' 6"	70.17	22.2	72' 10"	100 000	220 400	95 900	211 400
	10.0	32' 9"	67.22	21.8	71' 6"	86 800	191 300	81 700	180 100
	12.0	39' 4"	61.10	20.7	67' 11"	66 900	147 400	63 000	138 800
	14.0	45' 11"	54.57	19.4	63' 7"	54 300	119 700	51 100	112 600
	16.0	52' 5"	47.43	17.7	58' 0"	45 500	100 300	42 800	94 350
18.0	59' 0"	39.32	15.5	50' 10"	39 100	86 200	36 800	81 130	
19.9	65' 3"	30.00	12.7	41' 8"	34 500	76 050	32 500	71 650	
24.0 (78'3")	6.1	20' 0"	79.91	26.1	85' 7"	100 000	220 400	100 000	220 400
	6.5	21' 3"	78.93	26.0	85' 3"	100 000	220 400	100 000	220 400
	7.0	22' 11"	77.71	25.9	84' 11"	100 000	220 400	100 000	220 400
	8.0	26' 2"	75.24	25.7	84' 3"	100 000	220 400	100 000	220 400
	9.0	29' 6"	72.75	25.4	83' 4"	100 000	220 400	95 500	210 500
	10.0	32' 9"	70.22	25.0	82' 0"	86 500	190 700	81 500	179 600
	12.0	39' 4"	65.01	24.1	79' 0"	66 600	146 800	62 700	138 200
	14.0	45' 11"	59.57	23.0	75' 5"	53 900	118 800	50 800	111 900
	16.0	52' 5"	53.79	21.7	71' 2"	45 200	99 640	42 500	93 690
	18.0	59' 0"	47.53	20.0	65' 7"	38 800	85 530	36 500	80 460
	20.0	65' 7"	40.54	17.8	58' 4"	33 900	74 730	31 900	70 320
	22.0	72' 2"	32.30	15.0	49' 2"	30 100	66 350	28 300	62 390
22.5	73' 9"	30.00	14.2	46' 7"	29 300	64 590	27 500	60 620	
27.0 (88'7")	6.6	21' 7"	79.96	29.1	95' 5"	100 000	220 400	100 000	220 400
	7.0	22' 11"	79.10	29.0	95' 1"	100 000	220 400	100 000	220 400
	8.0	26' 2"	76.92	28.8	94' 5"	100 000	220 400	100 000	220 400
	9.0	29' 6"	74.72	28.5	93' 6"	100 000	220 400	95 400	210 300
	10.0	32' 9"	72.50	28.2	92' 6"	86 300	190 200	81 300	179 200
	12.0	39' 4"	67.97	27.4	89' 10"	66 400	146 300	62 500	137 700
	14.0	45' 11"	63.27	26.5	86' 11"	53 700	118 300	50 600	111 500
	16.0	52' 5"	58.37	25.3	83' 0"	45 000	99 200	42 300	93 250
	18.0	59' 0"	53.18	23.9	78' 4"	38 600	85 090	36 300	80 020
	20.0	65' 7"	47.60	22.2	72' 10"	33 700	74 290	31 700	69 880
	22.0	72' 2"	41.46	20.1	65' 11"	29 800	65 690	28 000	61 720
	24.0	78' 8"	34.42	17.5	57' 5"	26 700	58 860	25 100	55 330
25.1	82' 4"	30.00	15.7	51' 6"	25 300	55 770	23 800	52 470	

BOOM LENGTH	WORKING RADIUS		BOOM ANGLE	BOOM POINT HEIGHT		RATED		LOAD	
	m	ft-in		m	ft-in	kg	lb	kg	lb
30.0 (15")	7.1	23' 3"	80.00	32.0	104' 11"	100 000	220 400	100 000	220 400
	8.0	26' 2"	78.25	31.8	104' 4"	100 000	220 400	100 000	220 400
	9.0	29' 6"	76.29	31.6	103' 8"	100 000	220 400	95 100	209 600
	10.0	32' 9"	74.31	31.3	102' 8"	86 000	189 500	81 000	178 500
	12.0	39' 4"	70.28	30.7	100' 8"	66 100	145 700	62 200	137 100
	14.0	45' 11"	66.14	29.8	97' 9"	53 400	117 700	50 300	110 800
	16.0	52' 5"	61.86	28.8	94' 5"	44 600	98 320	42 000	92 590
	18.0	59' 0"	57.40	27.6	90' 6"	38 200	84 210	36 000	79 360
	20.0	65' 7"	52.69	26.2	85' 11"	33 300	73 410	31 300	69 000
	22.0	72' 2"	47.66	24.5	80' 4"	29 500	65 030	27 700	61 060
	24.0	78' 8"	42.18	22.4	73' 5"	26 400	58 200	24 800	54 670
	26.0	85' 3"	36.02	19.9	65' 3"	23 800	52 470	22 400	49 380
	27.7	90' 10"	30.00	17.2	56' 5"	22 000	48 500	20 700	45 630
33.0 (108' 3")	7.6	24' 11"	80.00	35.0	114' 10"	100 000	220 400	100 000	220 400
	8.0	25' 2"	79.34	34.9	114' 6"	100 000	220 400	100 000	220 400
	9.0	29' 6"	77.56	34.7	113' 10"	100 000	220 400	94 900	209 200
	10.0	32' 9"	75.77	34.4	112' 10"	85 800	189 100	80 800	178 100
	12.0	39' 4"	72.14	33.8	110' 10"	65 900	145 200	62 000	136 600
	14.0	45' 11"	68.44	33.1	108' 7"	53 200	117 200	50 100	110 400
	16.0	52' 5"	64.63	32.2	105' 7"	44 400	97 880	41 800	92 150
	18.0	59' 0"	60.70	31.1	102' 0"	38 000	83 770	35 700	78 700
	20.0	65' 7"	56.60	29.9	98' 1"	33 100	72 970	31 100	68 560
	22.0	72' 2"	52.29	28.4	93' 2"	29 200	64 370	27 500	60 620
	24.0	78' 8"	47.71	26.7	87' 7"	26 100	57 540	24 500	54 010
	26.0	85' 3"	42.76	24.7	81' 0"	23 500	51 800	22 100	48 720
	28.0	91' 10"	37.28	22.2	72' 10"	21 400	47 170	20 100	44 310
30.0	98' 5"	30.97	19.2	62' 11"	19 600	43 210	18 400	40 560	
30.3	99' 4"	30.00	18.7	61' 4"	19 400	42 760	18 200	40 120	
36.0 (118' 1")	8.1	26' 6"	80.00	37.9	124' 4"	100 000	220 400	100 000	220 400
	9.0	29' 6"	78.61	37.8	124' 0"	100 000	220 400	94 800	208 900
	10.0	32' 9"	76.98	37.5	123' 0"	85 700	188 900	80 700	177 900
	12.0	39' 4"	73.68	37.0	121' 4"	65 700	144 800	61 800	136 200
	14.0	45' 11"	70.32	36.3	119' 1"	53 000	116 800	49 900	110 000
	16.0	52' 5"	66.89	35.5	116' 5"	44 200	97 440	41 600	91 710
	18.0	59' 0"	63.36	34.5	113' 2"	37 800	83 330	35 500	78 260
	20.0	65' 7"	59.72	33.4	109' 7"	32 900	72 530	30 900	68 120
	22.0	72' 2"	55.93	32.1	105' 3"	29 000	63 930	27 300	60 180
	24.0	78' 8"	51.96	30.7	100' 8"	25 900	57 100	24 300	53 570
	26.0	85' 3"	47.75	28.9	94' 9"	23 300	51 360	21 900	48 280
	28.0	91' 10"	43.24	26.9	88' 3"	21 200	46 730	19 900	43 870
	30.0	98' 5"	38.30	24.5	80' 4"	19 400	42 760	18 200	40 120
32.0	104' 11"	32.73	21.7	71' 2"	17 800	39 240	16 700	36 810	
32.9	107' 11"	30.00	20.2	66' 3"	17 200	37 910	16 100	35 490	

BOOM LENGTH	WORKING RADIUS		BOOM ANGLE	BOOM POINT HEIGHT		RATED		LOAD	
						BS	RATING	PCSA	RATING
	a (ft/in)	m	ft/in	degree	m	ft/in	kg	lb	kg
9.0 (127'11")	8.7	28' 6"	79.95	40.9	134' 2"	84 100	185 400	88 400	194 800
	9.0	29' 6"	79.50	40.8	133' 10"	83 400	183 800	87 300	192 400
	10.0	32' 9"	78.00	40.6	133' 2"	81 100	178 700	80 400	177 200
	12.0	39' 4"	74.97	40.1	131' 6"	65 400	144 100	61 600	135 800
	14.0	45' 11"	71.89	39.5	129' 7"	52 700	116 100	49 600	109 300
	16.0	52' 5"	68.76	38.8	127' 3"	43 900	96 780	41 300	91 050
	18.0	59' 0"	65.56	37.9	124' 4"	37 500	82 670	35 200	77 600
	20.0	65' 7"	62.27	36.9	121' 0"	32 600	71 870	30 600	67 460
	22.0	72' 2"	58.88	35.7	117' 1"	28 700	63 270	26 900	59 300
	24.0	78' 8"	55.36	34.4	112' 10"	25 600	56 430	24 000	52 910
	26.0	85' 3"	51.67	32.9	107' 11"	23 000	50 700	21 600	47 620
	28.0	91' 10"	47.79	31.2	102' 4"	20 800	45 850	19 500	42 990
	30.0	98' 5"	43.64	29.2	95' 9"	19 000	41 880	17 000	37 470
	32.0	104' 11"	39.14	26.9	88' 3"	17 400	38 360	16 400	36 150
	34.0	111' 6"	34.15	24.1	79' 0"	16 100	35 490	15 100	33 280
35.5	116' 5"	30.00	21.7	71' 2"	15 200	33 510	14 300	31 520	
42.0 (137' 9")	9.2	30' 2"	79.98	43.8	143' 8"	75 400	166 200	82 600	182 100
	10.0	32' 9"	78.87	43.7	143' 4"	73 900	162 900	80 100	176 500
	12.0	39' 4"	76.07	43.2	141' 8"	65 300	143 900	61 500	135 500
	14.0	45' 11"	73.23	42.6	139' 9"	52 600	115 900	49 500	109 100
	16.0	52' 5"	70.35	42.0	137' 9"	43 800	96 560	41 200	90 830
	18.0	59' 0"	67.41	41.2	135' 2"	37 300	82 230	35 100	77 380
	20.0	65' 7"	64.41	40.3	132' 2"	32 400	71 430	30 500	67 240
	22.0	72' 2"	61.33	39.2	128' 7"	28 500	62 830	26 800	59 080
	24.0	78' 8"	58.15	38.0	124' 8"	25 400	55 990	23 800	52 470
	26.0	85' 3"	54.86	36.7	120' 4"	22 800	50 260	21 400	47 170
	28.0	91' 10"	51.43	35.1	115' 1"	20 600	45 410	19 400	42 760
	30.0	98' 5"	47.82	33.4	109' 7"	18 800	41 440	17 600	38 800
	32.0	104' 11"	43.98	31.4	103' 0"	17 200	37 910	16 200	35 710
	34.0	111' 6"	39.85	29.2	95' 9"	15 900	35 050	14 900	32 840
	36.0	118' 1"	35.32	26.5	86' 11"	14 700	32 400	13 800	30 420
38.0	124' 8"	30.20	23.3	76' 5"	13 700	30 200	12 800	28 210	
38.1	125' 0"	30.00	23.2	76' 1"	13 600	29 980	12 800	28 210	
45.0 (147' 7")	9.7	31' 9"	80.00	46.8	153' 6"	67 600	149 000	76 600	168 800
	10.0	32' 9"	79.62	46.7	153' 2"	67 200	148 100	75 800	167 100
	12.0	39' 4"	77.02	46.3	151' 10"	64 200	141 500	61 300	135 100
	14.0	45' 11"	74.38	45.8	150' 3"	52 400	115 500	49 300	108 600
	16.0	52' 5"	71.71	45.2	148' 3"	43 600	96 120	41 000	90 390
	18.0	59' 0"	69.00	44.4	145' 8"	37 100	81 790	34 900	76 940
	20.0	65' 7"	66.24	43.6	143' 0"	32 200	70 980	30 200	66 570
	22.0	72' 2"	63.41	42.6	139' 9"	28 300	62 390	26 600	58 640
	24.0	78' 8"	60.51	41.5	136' 1"	25 200	55 550	23 600	52 020
	26.0	85' 3"	57.52	40.3	132' 2"	22 600	49 820	21 200	46 730
	28.0	91' 10"	54.43	38.9	127' 7"	20 400	44 970	19 100	42 100
	30.0	98' 5"	51.21	37.4	122' 8"	18 600	41 000	17 400	38 360
	32.0	104' 11"	47.84	35.6	116' 9"	17 000	37 470	15 900	35 050
	34.0	111' 6"	44.27	33.7	110' 6"	15 600	34 390	14 600	32 180
	36.0	118' 1"	40.46	31.4	103' 0"	14 400	31 740	13 500	29 760
38.0	124' 8"	36.31	28.9	94' 9"	13 400	29 540	12 500	27 550	
40.0	131' 2"	31.69	25.9	84' 11"	12 500	27 550	11 700	25 790	
40.7	133' 6"	30.00	24.7	81' 0"	12 200	26 890	11 400	25 130	

BOOM LENGTH	WORKING RADIUS		BOOM ANGLE	BOOM POINT HEIGHT		RATED LOAD		RATED LOAD	
	m	ft in		m	ft in	BS RATING	PCSA RATING	kg	lb
m (ft in)	m	ft in	degree	m	ft in	kg	lb	kg	lb
48.0 (157' 5")	10.2	33' 5"	80.00	49.8	163' 4"	60 400	133 100	71 500	157 600
	12.0	39' 4"	77.84	49.4	162' 0"	58 100	128 000	61 300	135 100
	14.0	45' 11"	75.38	48.9	160' 5"	52 400	115 500	49 300	108 600
	16.0	52' 5"	72.90	48.3	158' 5"	43 600	96 120	41 000	90 390
	18.0	59' 0"	70.37	47.6	156' 2"	37 100	81 790	34 900	76 940
	20.0	65' 7"	67.81	46.8	153' 6"	32 200	70 980	30 300	66 800
	22.0	72' 2"	65.20	46.0	150' 11"	28 300	62 390	26 600	58 640
	24.0	78' 8"	62.53	45.0	147' 7"	25 200	55 550	23 600	52 020
	26.0	85' 3"	59.79	43.8	143' 8"	22 600	49 820	21 200	46 730
	28.0	91' 10"	56.97	42.6	139' 9"	20 400	44 970	19 100	42 100
	30.0	98' 5"	54.06	41.2	135' 2"	18 500	40 780	17 400	38 360
	32.0	104' 11"	51.03	39.6	129' 11"	17 000	37 470	15 900	35 050
	34.0	111' 6"	47.86	37.9	124' 4"	15 600	34 390	14 600	32 180
	36.0	118' 1"	44.53	35.9	117' 9"	14 400	31 740	13 500	29 760
	38.0	124' 8"	40.98	33.7	110' 6"	13 300	29 320	12 500	27 550
	40.0	131' 2"	37.15	31.2	102' 4"	12 400	27 330	11 600	25 570
	42.0	137' 9"	32.94	28.3	92' 10"	11 600	25 570	10 800	23 810
43.3	142' 0"	30.00	26.2	85' 11"	11 100	24 470	10 400	22 920	
51.0 (167' 3")	10.8	35' 1"	79.94	52.7	172' 10"	53 500	117 900	59 100	130 200
	12.0	39' 4"	78.57	52.5	172' 3"	52 300	115 300	57 000	125 600
	14.0	45' 11"	76.26	52.0	170' 7"	50 300	110 800	49 200	108 400
	16.0	52' 5"	73.93	51.4	168' 7"	43 500	95 900	40 900	90 160
	18.0	59' 0"	71.57	50.8	166' 8"	37 100	81 790	34 800	76 720
	20.0	65' 7"	69.18	50.1	164' 4"	32 100	70 760	30 200	66 570
	22.0	72' 2"	66.75	49.3	161' 9"	28 200	62 170	26 500	58 420
	24.0	78' 8"	64.27	48.3	158' 5"	25 100	55 330	23 500	51 800
	26.0	85' 3"	61.74	47.3	155' 2"	22 500	49 600	21 100	46 510
	28.0	91' 10"	59.14	46.1	151' 3"	20 300	44 750	19 000	41 880
	30.0	98' 5"	56.48	44.8	146' 11"	18 400	40 560	17 300	38 140
	32.0	104' 11"	53.72	43.4	142' 4"	16 800	37 030	15 800	34 830
	34.0	111' 6"	50.86	41.9	137' 5"	15 500	34 170	14 500	31 960
	36.0	118' 1"	47.88	40.1	131' 6"	14 200	31 300	13 300	29 320
	38.0	124' 8"	44.75	38.2	125' 4"	13 200	29 100	12 300	27 110
	40.0	131' 2"	41.43	36.0	118' 1"	12 200	26 890	11 400	25 130
	42.0	137' 9"	37.88	33.5	109' 10"	11 400	25 130	10 600	23 360
44.0	144' 4"	34.01	30.7	100' 8"	10 600	23 360	9 900	21 820	
45.9	150' 7"	30.00	27.6	90' 6"	10 000	22 040	9 900	21 820	

BOOM LENGTH	WORKING RADIUS		BOOM ANGLE	BOOM POINT HEIGHT		RATED		LOAD	
	m (ft. in)	m ft in		m ft in	kg lb	kg lb	kg lb	kg lb	
54.0 (177' 2")	11.3	37' 0"	79.97	55.7	182' 9"	47 800	105 300	55 000	121 200
	12.0	39' 4"	79.21	55.5	182' 1"	47 200	104 000	53 800	118 600
	14.0	45' 11"	77.04	55.1	180' 9"	45 500	100 300	49 000	108 000
	16.0	52' 5"	74.85	54.6	179' 1"	43 300	95 460	40 700	89 720
	18.0	59' 0"	72.63	54.0	177' 2"	36 800	81 130	34 600	76 280
	20.0	65' 7"	70.39	53.3	174' 10"	31 900	70 320	30 000	66 130
	22.0	72' 2"	68.11	52.5	172' 3"	28 000	61 720	26 300	57 980
	24.0	78' 8"	65.80	51.6	169' 3"	24 800	54 670	23 300	51 360
	26.0	85' 3"	63.44	50.7	166' 4"	22 200	48 940	20 900	46 070
	28.0	91' 10"	61.04	49.6	162' 8"	20 000	44 090	18 800	41 440
	30.0	98' 5"	58.57	48.4	158' 9"	18 200	40 120	17 100	37 690
	32.0	104' 11"	56.04	47.1	154' 6"	16 600	36 590	15 500	34 170
	34.0	111' 6"	53.42	45.7	149' 11"	15 200	33 510	14 200	31 300
	36.0	118' 1"	50.72	44.1	144' 8"	14 000	30 860	13 100	28 860
	38.0	124' 8"	47.90	42.3	138' 9"	12 900	28 430	12 100	26 670
	40.0	131' 2"	44.95	40.4	132' 6"	12 000	26 450	11 200	24 690
	42.0	137' 9"	41.84	38.3	125' 7"	11 100	24 470	10 400	22 920
	44.0	144' 4"	38.52	35.9	117' 9"	10 400	22 920	9 700	21 380
46.0	150' 11"	34.93	33.1	108' 7"	9 700	21 380	9 000	19 840	
48.0	157' 5"	30.99	30.0	98' 5"	9 100	20 060	8 500	18 730	
48.5	159' 1"	30.00	29.1	95' 5"	9 000	19 840	8 300	18 290	
57.0 (187' 0")	11.8	38' 8"	79.99	58.6	192' 3"	42 500	93 690	50 000	110 200
	12.0	39' 4"	79.79	58.6	192' 3"	42 400	93 470	50 000	110 200
	14.0	45' 11"	77.73	58.2	190' 11"	40 800	89 940	47 500	104 700
	16.0	52' 5"	75.67	57.7	189' 3"	39 300	86 640	40 700	89 720
	18.0	59' 0"	73.58	57.1	187' 4"	36 800	81 130	34 600	76 280
	20.0	65' 7"	71.46	56.5	185' 4"	31 800	70 100	29 900	65 910
	22.0	72' 2"	69.32	55.7	182' 9"	27 900	61 500	26 200	57 760
	24.0	78' 8"	67.15	54.9	180' 1"	24 800	54 670	23 200	51 140
	26.0	85' 3"	64.95	54.0	177' 2"	22 200	48 940	20 800	45 850
	28.0	91' 10"	62.70	53.0	173' 10"	20 000	44 090	18 700	41 220
	30.0	98' 5"	60.40	51.9	170' 3"	18 100	39 900	17 000	37 470
	32.0	104' 11"	58.05	50.7	166' 4"	16 500	36 370	15 500	34 170
	34.0	111' 6"	55.64	49.4	162' 0"	15 100	33 280	14 200	31 300
	36.0	118' 1"	53.16	47.9	157' 1"	13 900	30 640	13 000	28 660
	38.0	124' 8"	50.59	46.3	151' 10"	12 800	28 210	12 000	26 450
	40.0	131' 2"	47.92	44.6	146' 3"	11 900	26 230	11 100	24 470
	42.0	137' 9"	45.13	42.7	140' 1"	11 000	24 250	10 300	22 700
	44.0	144' 4"	42.19	40.5	132' 10"	10 200	22 480	9 600	21 160
46.0	150' 11"	39.08	38.2	125' 4"	9 500	20 940	8 900	19 620	
48.0	157' 5"	35.74	35.5	116' 5"	8 900	19 620	8 300	18 290	
50.0	164' 0"	32.10	32.5	106' 7"	8 400	18 510	7 800	17 190	
51.1	167' 7"	30.00	30.6	100' 4"	8 100	17 850	7 500	16 530	

BOOM LENGTH	WORKING RADIUS		BOOM ANGLE	BOOM POINT HEIGHT		RATED LOAD		RATED LOAD	
	m	ft. in.		m	ft. in.	BS RATING	PCSA RATING	kg	lb.
m (ft. in.)	m	ft. in.	degree	m	ft. in.	kg	lb.	kg	lb.
60.0 (196' 10")	12.3	40' 4"	80.00	61.6	202' 1"	38 200	84 210	46 000	101 400
	14.0	45' 11"	78.36	61.2	200' 9"	37 000	81 570	45 000	99 200
	16.0	52' 5"	76.40	60.8	199' 5"	35 600	78 480	40 600	89 500
	18.0	59' 0"	74.42	60.2	197' 6"	34 300	75 610	34 500	76 050
	20.0	65' 7"	72.42	59.6	195' 6"	31 800	70 100	29 800	65 690
	22.0	72' 2"	70.40	58.9	193' 3"	27 900	61 500	26 200	57 760
	24.0	78' 8"	68.36	58.2	190' 11"	24 700	54 450	23 200	51 140
	26.0	85' 3"	66.28	57.3	188' 0"	22 100	48 720	20 700	45 630
	28.0	91' 10"	64.17	56.4	185' 0"	19 900	43 870	18 700	41 220
	30.0	98' 5"	62.02	55.4	181' 9"	18 000	39 680	16 900	37 250
	32.0	104' 11"	59.83	54.2	177' 9"	16 400	36 150	15 400	33 950
	34.0	111' 6"	57.59	53.0	173' 10"	15 000	33 060	14 100	31 080
	36.0	118' 1"	55.28	51.6	169' 3"	13 700	30 200	12 900	28 430
	38.0	124' 8"	52.91	50.2	164' 8"	12 700	27 990	11 900	26 230
	40.0	131' 2"	50.47	48.6	159' 5"	11 800	26 010	11 000	24 250
	42.0	137' 9"	47.93	46.8	153' 6"	10 900	24 030	10 200	22 480
	44.0	144' 4"	45.28	44.9	147' 3"	10 200	22 480	9 500	20 940
	46.0	150' 11"	42.51	42.8	140' 5"	9 500	20 940	8 800	19 400
	48.0	157' 5"	39.58	40.5	132' 10"	8 800	19 400	8 200	18 070
	50.0	164' 0"	36.45	37.9	124' 4"	8 300	18 290	7 700	16 970
52.0	170' 7"	33.07	35.0	114' 10"	7 800	17 190	7 200	15 870	
53.7	176' 2"	30.00	32.1	105' 3"	7 400	16 310	6 800	14 990	
63.0 (206' 8")	12.8	42' 0"	80.00	64.5	211' 7"	34 100	75 170	40 900	90 160
	14.0	45' 11"	78.92	64.3	210' 11"	33 300	73 410	39 700	87 520
	16.0	52' 5"	77.06	63.9	209' 7"	32 100	70 760	37 900	83 550
	18.0	59' 0"	75.18	63.4	208' 0"	30 900	68 120	34 300	75 610
	20.0	65' 7"	73.29	62.8	206' 0"	29 800	65 690	29 600	65 250
	22.0	72' 2"	71.37	62.1	203' 9"	27 600	60 840	25 900	57 100
	24.0	78' 8"	69.44	61.4	201' 5"	24 400	53 790	22 900	50 480
	26.0	85' 3"	67.48	60.6	198' 9"	21 800	48 060	20 500	45 190
	28.0	91' 10"	65.49	59.7	195' 10"	19 600	43 210	18 400	40 560
	30.0	98' 5"	63.47	58.7	192' 7"	17 800	39 240	16 700	36 810
	32.0	104' 11"	61.41	57.7	189' 3"	16 200	35 710	15 100	33 280
	34.0	111' 6"	59.31	56.5	185' 4"	14 800	32 620	13 800	30 420
	36.0	118' 1"	57.16	55.3	181' 5"	13 600	29 980	12 700	27 990
	38.0	124' 8"	54.96	53.9	176' 10"	12 500	27 550	11 700	25 790
	40.0	131' 2"	52.69	52.4	171' 11"	11 500	25 350	10 800	23 810
	42.0	137' 9"	50.36	50.8	166' 8"	10 700	23 580	9 900	21 820
	44.0	144' 4"	47.94	49.1	161' 1"	9 900	21 820	9 200	20 280
	46.0	150' 11"	45.43	47.1	154' 6"	9 200	20 280	8 600	18 950
	48.0	157' 5"	42.80	45.1	147' 11"	8 600	18 950	8 000	17 630
	50.0	164' 0"	40.03	42.8	140' 5"	8 000	17 630	7 400	16 310
52.0	170' 7"	37.08	40.2	131' 10"	7 500	16 530	6 900	15 210	
54.0	177' 2"	33.92	37.4	122' 8"	7 000	15 430	6 500	14 330	
56.0	183' 8"	30.47	34.2	112' 2"	6 500	14 330	6 100	13 440	
56.3	184' 9"	30.00	33.6	110' 3"	6 500	14 330	6 000	13 220	

Light-duty Service with Mast

BOOM LENGTH m (ft/in)	WORKING RADIUS		BOOM ANGLE degree	BOOM POINT HEIGHT		RATED LOAD			
	m	ft/in		m	ft/in	BS RATING		PCSA RATING	
						kg	lb	kg	lb
45.0 (147' 9")	9.7	31' 9"	80.00	46.8	153' 6"	78 300	172 000	84 550	186 000
	10.0	32' 9"	79.62	46.7	153' 2"	77 800	171 500	82 150	181 000
	12.0	39' 4"	77.02	46.3	151' 10"	67 350	148 000	62 800	138 000
	14.0	45' 11"	74.38	45.8	150' 3"	54 150	119 000	50 500	111 000
	16.0	52' 5"	71.71	45.2	148' 3"	45 050	99 300	42 000	92 500
	18.0	59' 0"	69.00	44.4	145' 8"	38 350	84 500	35 750	78 800
	20.0	65' 7"	66.24	43.6	143' 0"	33 250	73 300	30 950	68 200
	22.0	72' 2"	63.41	42.6	139' 9"	29 200	64 300	27 200	59 900
	24.0	78' 8"	60.51	41.5	136' 1"	25 950	57 200	24 150	53 200
	26.0	85' 3"	57.52	40.3	132' 2"	23 250	51 200	21 650	47 700
	28.0	91' 10"	54.43	38.9	127' 7"	21 000	46 200	19 550	43 100
	30.0	98' 5"	51.21	37.4	122' 8"	19 050	41 900	17 750	39 100
	32.0	104' 11"	47.84	35.6	116' 9"	17 450	38 400	16 250	35 800
	34.0	111' 6"	44.27	33.7	110' 6"	16 000	35 200	14 900	32 800
	36.0	118' 1"	40.46	31.4	103' 0"	14 750	32 500	13 750	30 300
	38.0	124' 8"	36.31	28.9	94' 9"	13 650	30 000	12 750	28 100
	40.0	131' 2"	31.69	25.9	84' 11"	12 700	27 900	11 850	26 100
40.7	133' 6"	30.00	24.7	81' 0"	12 400	27 300	11 550	25 400	
48.0 (157' 5")	10.2	33' 5"	80.00	49.8	163' 4"	70 800	156 000	77 950	171 000
	12.0	39' 4"	77.84	49.4	162' 0"	67 350	148 000	62 800	138 000
	14.0	45' 11"	75.38	48.9	160' 5"	54 150	119 000	50 500	111 000
	16.0	52' 5"	72.90	48.3	158' 5"	45 000	99 200	41 950	92 400
	18.0	59' 0"	70.37	47.6	156' 2"	38 350	84 500	35 700	78 700
	20.0	65' 7"	67.81	46.8	153' 6"	33 200	73 100	30 950	68 200
	22.0	72' 2"	65.20	46.0	150' 11"	29 200	64 300	27 200	59 900
	24.0	78' 8"	62.53	45.0	147' 7"	25 900	57 100	24 150	53 200
	26.0	85' 3"	59.79	43.8	143' 8"	23 250	51 200	21 650	47 700
	28.0	91' 10"	56.97	42.6	139' 9"	20 950	46 100	19 500	42 900
	30.0	98' 5"	54.06	41.2	135' 2"	19 050	41 900	17 750	39 100
	32.0	104' 11"	51.03	39.6	129' 11"	17 400	38 300	16 200	35 700
	34.0	111' 6"	47.86	37.9	124' 4"	16 000	35 200	14 850	32 700
	36.0	118' 1"	44.53	35.9	117' 9"	14 750	32 500	13 700	30 200
	38.0	124' 8"	40.98	33.7	110' 6"	13 600	29 900	12 700	27 900
	40.0	131' 2"	37.15	31.2	102' 4"	12 650	27 800	11 800	26 000
	42.0	137' 9"	32.94	28.3	92' 10"	11 800	26 000	11 000	24 200
43.3	142' 0"	30.00	26.2	85' 11"	11 300	24 900	10 500	23 100	

BOOM LENGTH	WORKING RADIUS	BOOM ANGLE	BOOM POINT HEIGHT		RATED		LOAD		
					BS RATING	PGSA RATING	kg	lb	
m (ft in)	m	ft in	degree	m	ft in	kg	lb	kg	lb
51.0 (167' 3")	10.9	35' 5"	79.83	52.7	172' 10"	63 400	139 000	65 600	144 000
	12.0	39' 4"	78.57	52.5	172' 3"	62 300	137 000	62 700	138 000
	14.0	45' 11"	76.26	52.0	170' 7"	54 050	119 000	50 400	111 000
	16.0	52' 5"	73.93	51.4	168' 7"	44 900	98 900	41 850	92 200
	18.0	59' 0"	71.57	50.8	166' 8"	38 200	84 200	35 600	78 400
	20.0	65' 7"	69.18	50.1	164' 4"	33 100	72 900	30 800	67 900
	22.0	72' 2"	66.75	49.3	161' 9"	29 050	64 000	27 050	59 600
	24.0	78' 8"	64.27	48.3	158' 5"	25 750	56 700	24 000	52 900
	26.0	85' 3"	61.74	47.3	155' 2"	23 050	50 800	21 450	47 200
	28.0	91' 10"	59.14	46.1	151' 3"	20 800	45 800	19 350	42 600
	30.0	98' 5"	56.48	44.8	146' 11"	18 900	41 600	17 550	38 600
	32.0	104' 11"	53.72	43.4	142' 4"	17 250	38 000	15 100	33 200
	34.0	111' 6"	50.86	41.9	137' 5"	15 800	34 800	14 700	32 400
	36.0	118' 1"	47.88	40.1	131' 6"	14 550	32 000	13 500	29 700
	38.0	124' 8"	44.75	38.2	125' 4"	13 400	29 500	12 500	27 500
	40.0	131' 2"	41.43	36.0	118' 1"	12 450	27 400	11 550	25 400
	42.0	137' 9"	37.88	33.5	109' 10"	11 550	25 400	10 750	23 600
44.0	144' 4"	34.01	30.7	100' 8"	10 800	23 800	10 000	22 000	
45.9	150' 7"	30.00	27.6	90' 6"	10 100	22 200	9 400	20 700	
44.0 (144' 2")	11.3	37' 0"	79.97	55.7	182' 9"	56 900	125 000	61 300	135 000
	12.0	39' 4"	79.21	55.5	182' 1"	56 300	124 000	60 400	133 000
	14.0	45' 11"	77.04	55.1	180' 9"	54 000	119 000	50 300	110 000
	16.0	52' 5"	74.85	54.6	179' 1"	44 850	98 800	41 800	92 100
	18.0	59' 0"	72.63	54.0	177' 2"	38 150	84 100	35 500	78 200
	20.0	65' 7"	70.39	53.3	174' 10"	33 000	72 700	30 750	67 700
	22.0	72' 2"	68.11	52.5	172' 3"	28 950	63 800	26 950	59 400
	24.0	78' 8"	65.80	51.6	169' 3"	25 700	56 600	23 900	52 600
	26.0	85' 3"	63.44	50.7	166' 4"	23 000	50 700	21 400	47 100
	28.0	91' 10"	61.04	49.6	162' 8"	20 700	45 600	19 250	42 400
	30.0	98' 5"	58.57	48.4	158' 9"	18 800	41 400	17 450	38 400
	32.0	104' 11"	56.04	47.1	154' 6"	17 150	37 800	15 900	35 000
	34.0	111' 6"	53.42	45.7	149' 11"	15 700	34 600	14 550	32 000
	36.0	118' 1"	50.72	44.1	144' 8"	14 400	31 700	13 400	29 500
	38.0	124' 8"	47.90	42.3	138' 9"	13 300	29 300	12 350	27 200
	40.0	131' 2"	44.95	40.4	132' 6"	12 300	27 100	11 450	25 200
	42.0	137' 9"	41.84	38.3	125' 7"	11 400	25 100	10 600	23 300
44.0	144' 4"	38.52	35.9	117' 9"	10 650	23 400	9 850	21 700	
46.0	150' 11"	34.93	33.1	108' 7"	9 900	21 800	9 200	20 200	
48.0	157' 5"	30.99	30.0	98' 5"	9 250	20 300	8 600	18 900	
48.5	159' 1"	30.00	29.1	95' 5"	9 100	20 000	8 450	18 600	

BOOM LENGTH	WORKING RADIUS		BOOM ANGLE	BOOM POINT HEIGHT		RATED LOAD		RATED LOAD	
	m (ft. in)	m ft. in		degree	m ft. in	BS RATING	PCSA RATING	kg lb	kg lb
57.0 (187' 0")	11.8	38' 9"	79.99	58.6	192' 3"	51 400	113 000	56 550	124 000
	12.0	39' 4"	79.79	58.6	192' 3"	51 200	112 000	56 300	124 000
	14.0	45' 11"	77.73	58.2	190' 11"	49 700	109 000	50 150	110 000
	16.0	52' 5"	75.67	57.7	189' 3"	44 650	98 400	41 600	91 700
	18.0	59' 0"	73.58	57.1	187' 4"	37 950	83 600	35 350	77 900
	20.0	65' 7"	71.46	56.5	185' 4"	32 800	72 300	30 550	67 300
	22.0	72' 2"	69.32	55.7	182' 9"	28 750	63 300	26 750	58 900
	24.0	78' 8"	67.15	54.9	180' 1"	25 500	56 200	23 700	52 200
	26.0	85' 3"	64.95	54.0	177' 2"	22 800	50 200	21 200	46 700
	28.0	91' 10"	62.70	53.0	173' 10"	20 500	45 100	19 050	41 900
	30.0	98' 5"	60.40	51.9	170' 3"	18 600	41 000	17 250	38 000
	32.0	104' 11"	58.05	50.7	166' 4"	16 950	37 300	15 700	34 600
	34.0	111' 6"	55.64	49.4	162' 0"	15 500	34 100	14 350	31 600
	36.0	118' 1"	53.16	47.9	157' 1"	14 200	31 300	13 200	29 100
	38.0	124' 8"	50.59	46.3	151' 10"	13 100	28 800	12 150	26 700
	40.0	131' 2"	47.92	44.6	146' 3"	12 100	26 600	11 200	24 600
	42.0	137' 9"	45.13	42.7	140' 1"	11 200	24 600	10 400	22 900
	44.0	144' 4"	42.19	40.5	132' 10"	10 400	22 900	9 650	21 200
	46.0	150' 11"	39.08	38.2	125' 4"	9 700	21 300	9 000	19 800
	48.0	157' 5"	35.74	35.5	116' 5"	9 050	19 900	8 400	18 500
50.0	164' 0"	32.10	32.5	106' 7"	8 450	18 600	7 850	17 300	
51.1	167' 7"	30.00	30.6	100' 4"	8 150	17 900	7 550	16 600	
60.0 (196' 10")	12.3	40' 4"	80.00	61.6	202' 1"	46 200	101 000	50 000	110 000
	14.0	45' 11"	78.36	61.2	200' 9"	45 000	99 200	50 000	110 000
	16.0	52' 5"	76.40	60.8	199' 5"	43 600	96 100	41 700	91 900
	18.0	59' 0"	74.42	60.2	197' 6"	38 050	83 800	35 450	78 100
	20.0	65' 7"	72.42	59.6	195' 6"	32 900	72 500	30 650	67 500
	22.0	72' 2"	70.40	58.9	193' 3"	28 850	63 600	26 850	59 100
	24.0	78' 8"	68.36	58.2	190' 11"	25 600	56 400	23 800	52 400
	26.0	85' 3"	66.28	57.3	188' 0"	22 900	50 400	21 250	46 800
	28.0	91' 10"	64.17	56.4	185' 0"	20 600	45 400	19 150	42 200
	30.0	98' 5"	62.02	55.4	181' 9"	18 700	41 200	17 350	38 200
	32.0	104' 11"	59.83	54.2	177' 9"	17 000	37 400	15 800	34 800
	34.0	111' 6"	57.59	53.0	173' 10"	15 550	34 200	14 450	31 800
	36.0	118' 1"	55.28	51.6	169' 3"	14 300	31 500	13 250	29 200
	38.0	124' 8"	52.91	50.2	164' 8"	13 150	28 900	12 200	26 800
	40.0	131' 2"	50.47	48.6	159' 5"	12 150	26 700	11 300	24 900
	42.0	137' 9"	47.93	46.8	153' 6"	11 250	24 800	10 450	23 000
	44.0	144' 4"	45.28	44.9	147' 3"	10 450	23 000	9 700	21 300
	46.0	150' 11"	42.51	42.8	140' 5"	9 750	21 400	9 000	19 800
	48.0	157' 5"	39.58	40.5	132' 10"	9 100	20 000	8 400	18 500
	50.0	164' 0"	36.45	37.9	124' 4"	8 500	18 700	7 850	17 300
52.0	170' 7"	33.07	35.0	114' 10"	7 950	17 500	7 350	16 200	
53.7	176' 2"	30.00	32.1	105' 3"	7 500	16 500	6 950	15 300	

BOOM LENGTH	WORKING RADIUS		BOOM ANGLE	BOOM POINT HEIGHT		RATED LOAD		RATED LOAD	
	m	ft. In		m	ft. In	BS RATING	PCSA RATING	kg	lb
m (ft. In)	m	ft. In	degree	m	ft. In	kg	lb	kg	lb
63.0 (206' 8")	12.8	42' 0"	80.00	64.5	211' 7"	41 700	91 900	45 100	99 400
	14.0	45' 11"	78.92	64.3	210' 11"	40 900	90 100	44 400	97 800
	16.0	52' 5"	77.06	63.9	209' 7"	39 600	87 300	41 500	91 400
	18.0	59' 0"	75.18	63.4	208' 0"	37 800	83 300	35 200	77 600
	20.0	65' 7"	73.29	62.8	206' 0"	32 700	72 000	30 400	67 000
	22.0	72' 2"	71.37	62.1	203' 9"	28 650	63 100	26 600	58 600
	24.0	78' 8"	69.44	61.4	201' 5"	25 350	55 800	23 550	51 900
	26.0	85' 3"	67.48	60.6	198' 9"	22 650	49 900	21 050	46 400
	28.0	91' 10"	65.49	59.7	195' 10"	20 350	44 800	18 900	41 600
	30.0	98' 5"	63.47	58.7	192' 7"	18 450	40 600	17 100	37 600
	32.0	104' 11"	61.41	57.7	189' 3"	16 750	36 900	15 550	34 200
	34.0	111' 6"	59.31	56.5	185' 4"	15 300	33 700	14 200	31 300
	36.0	118' 1"	57.16	55.3	181' 5"	14 050	30 900	13 000	28 600
	38.0	124' 8"	54.96	53.9	176' 10"	12 900	28 400	11 950	26 300
	40.0	131' 2"	52.69	52.4	171' 11"	11 900	26 200	11 000	24 200
	42.0	137' 9"	50.36	50.8	166' 8"	11 000	24 200	10 200	22 400
	44.0	144' 4"	47.94	49.1	161' 1"	10 200	22 400	9 450	20 800
	46.0	150' 11"	45.43	47.1	154' 6"	9 500	20 900	8 750	19 200
	48.0	157' 5"	42.80	45.1	147' 11"	8 800	19 400	8 150	17 900
	50.0	164' 0"	40.03	42.8	140' 5"	8 200	18 000	7 600	16 700
52.0	170' 7"	37.08	40.2	131' 10"	7 650	16 800	7 100	15 600	
54.0	177' 2"	33.92	37.4	122' 8"	7 150	15 700	6 600	14 500	
56.0	183' 8"	30.47	34.2	112' 2"	6 700	14 700	6 200	13 600	
56.3	184' 8"	30.00	33.6	110' 2"	6 650	14 600	6 150	13 500	
66.0 (216' 6")	13.4	43' 11"	79.96	67.5	221' 5"	37 700	83 100	40 350	88 900
	14.0	45' 11"	79.43	67.4	221' 1"	37 300	82 200	40 150	88 500
	16.0	52' 5"	77.66	66.9	219' 5"	36 100	79 500	39 500	87 000
	18.0	59' 0"	75.87	66.5	218' 2"	34 900	76 900	35 000	77 100
	20.0	65' 7"	74.07	65.9	216' 2"	32 450	71 500	30 200	66 500
	22.0	72' 2"	72.25	65.3	214' 2"	28 400	62 600	26 400	58 200
	24.0	78' 8"	70.42	64.6	211' 11"	25 150	55 400	23 350	51 400
	26.0	85' 3"	68.56	63.8	209' 3"	22 450	49 400	20 800	45 800
	28.0	91' 10"	66.67	63.0	206' 8"	20 150	44 400	18 700	41 200
	30.0	98' 5"	64.76	62.1	203' 9"	18 200	40 100	16 900	37 200
	32.0	104' 11"	62.82	61.1	200' 5"	16 550	36 400	15 350	33 800
	34.0	111' 6"	60.85	60.0	196' 10"	15 100	33 200	14 000	30 800
	36.0	118' 1"	58.83	58.8	192' 11"	13 800	30 400	12 800	28 200
	38.0	124' 8"	56.77	57.5	188' 7"	12 700	27 900	11 750	25 900
	40.0	131' 2"	54.66	56.2	184' 4"	11 700	25 700	10 800	23 800
	42.0	137' 9"	52.50	54.7	179' 5"	10 800	23 800	9 950	21 900
	44.0	144' 4"	50.26	53.0	173' 10"	10 000	22 000	9 200	20 200
	46.0	150' 11"	47.95	51.3	168' 3"	9 250	20 300	8 550	18 800
	48.0	157' 5"	45.56	49.4	162' 0"	8 600	18 900	7 950	17 500
	50.0	164' 0"	43.05	47.3	155' 2"	8 000	17 600	7 350	16 200
52.0	170' 7"	40.43	45.0	147' 7"	7 450	16 400	6 850	15 100	
54.0	177' 2"	37.65	42.5	139' 5"	6 950	15 300	6 400	14 100	
56.0	183' 8"	34.68	39.8	130' 7"	6 450	14 200	5 950	13 100	
58.0	190' 3"	31.47	36.7	120' 4"	6 050	13 300	5 550	12 200	
58.9	193' 3"	30.00	35.1	115' 1"	5 850	12 800	5 400	11 900	



BOOM LENGTH	WORKING RADIUS		BOOM ANGLE	BOOM POINT HEIGHT		RATED		LOAD	
	m (ft. in)	m ft. in		m ft. in	m ft. in	BS RATING	PCSA RATING	kg lb	kg lb
69.0 (226' 4")	13.9	45' 7"	79.98	70.4	230' 11"	33 700	74 200	36 500	80 400
	14.0	45' 11"	79.89	70.4	230' 11"	33 600	74 000	36 450	80 300
	16.0	52' 5"	78.20	70.0	229' 8"	32 500	71 600	35 500	78 200
	18.0	59' 0"	76.50	69.6	228' 4"	31 400	69 200	34 950	77 000
	20.0	65' 7"	74.78	69.0	226' 4"	30 400	67 000	30 200	66 500
	22.0	72' 2"	73.05	68.4	224' 5"	28 400	62 600	26 400	58 200
	24.0	78' 8"	71.30	67.8	222' 5"	25 100	55 300	23 350	51 400
	26.0	85' 3"	69.53	67.1	220' 1"	22 400	49 300	20 800	45 800
	28.0	91' 10"	67.75	66.3	217' 6"	20 150	44 400	18 650	41 100
	30.0	98' 5"	65.94	65.4	214' 6"	18 200	40 100	16 850	37 100
	32.0	104' 11"	64.10	64.4	211' 3"	16 500	36 300	15 300	33 700
	34.0	111' 6"	62.23	63.4	208' 0"	15 050	33 100	13 950	30 700
	36.0	118' 1"	60.33	62.3	204' 4"	13 800	30 400	12 750	28 100
	38.0	124' 8"	58.40	61.1	200' 5"	12 650	27 800	11 700	25 700
	40.0	131' 2"	56.42	59.8	196' 2"	11 650	25 600	10 750	23 600
	42.0	137' 9"	54.39	58.4	191' 7"	10 750	23 600	9 900	21 800
	44.0	144' 4"	52.31	56.9	186' 8"	9 950	21 900	9 150	20 100
	46.0	150' 11"	50.17	55.3	181' 5"	9 200	20 200	8 500	18 700
	48.0	157' 5"	47.96	53.5	175' 6"	8 550	18 800	7 850	17 300
	50.0	164' 0"	45.67	51.6	169' 3"	7 900	17 400	7 300	16 000
	52.0	170' 7"	43.29	49.6	162' 8"	7 350	16 200	6 750	14 800
54.0	177' 2"	40.79	47.3	155' 2"	6 850	15 100	6 300	13 800	
56.0	183' 8"	38.16	44.9	147' 3"	6 350	13 900	5 850	12 800	
58.0	190' 3"	35.36	42.2	138' 5"	5 850	12 800	5 450	12 000	
60.0	196' 10"	32.36	39.1	128' 3"	5 400	11 900	5 100	11 200	
61.5	201' 9"	30.00	36.6	120' 1"	5 100	11 200	4 850	10 600	
72.0 (236' 2")	14.4	47' 2"	80.00	73.4	240' 9"	30 600	67 400	32 600	71 800
	16.0	52' 5"	78.70	73.1	239' 10"	29 800	65 600	32 100	70 700
	18.0	59' 0"	77.07	72.6	238' 2"	28 800	63 400	31 450	69 300
	20.0	65' 7"	75.43	72.1	236' 6"	27 800	61 200	30 100	66 300
	22.0	72' 2"	73.78	71.6	234' 11"	26 900	59 300	26 350	58 000
	24.0	78' 8"	72.11	70.9	232' 7"	25 050	55 200	23 250	51 200
	26.0	85' 3"	70.42	70.3	230' 7"	22 350	49 200	20 750	45 700
	28.0	91' 10"	68.72	69.5	228' 0"	20 050	44 200	18 600	41 000
	30.0	98' 5"	67.00	68.7	225' 4"	18 100	39 900	16 800	37 000
	32.0	104' 11"	65.26	67.8	222' 5"	16 450	36 200	15 250	33 600
	34.0	111' 6"	63.49	66.8	219' 2"	15 000	33 000	13 850	30 500
	36.0	118' 1"	61.69	65.7	215' 6"	13 700	30 200	12 700	27 900
	38.0	124' 8"	59.86	64.6	211' 11"	12 600	27 700	11 600	25 500
	40.0	131' 2"	57.99	63.4	208' 0"	11 550	25 400	10 700	23 500
	42.0	137' 9"	56.09	62.1	203' 9"	10 650	23 400	9 850	21 700
	44.0	144' 4"	54.14	60.7	199' 1"	9 850	21 700	9 100	20 000
	46.0	150' 11"	52.14	59.2	194' 2"	9 100	20 000	8 400	18 500
	48.0	157' 5"	50.09	57.5	188' 7"	8 450	18 600	7 800	17 100
	50.0	164' 0"	47.97	55.8	183' 0"	7 850	17 300	7 200	15 800
	52.0	170' 7"	45.78	53.9	176' 10"	7 300	16 000	6 700	14 700
	54.0	177' 2"	43.50	51.8	169' 11"	6 750	14 800	6 200	13 600
56.0	183' 8"	41.12	49.6	162' 8"	6 300	13 800	5 750	12 600	
58.0	190' 3"	38.62	47.2	154' 10"	5 800	12 700	5 350	11 700	
60.0	196' 10"	35.98	44.5	146' 0"	5 350	11 700	5 000	11 000	
62.0	203' 5"	33.15	41.6	136' 5"	4 950	10 900	4 650	10 200	
64.0	209' 11"	30.09	38.3	125' 7"	4 550	10 000	4 350	9 590	

BOOM LENGTH	WORKING RADIUS		BOOM ANGLE	BOOM POINT HEIGHT		RATED LOAD			
						BS RATING		PCSA RATING	
	m (ft in)	m ft in	degree	m ft in	m ft in	kg lb	kg lb	kg lb	
75.0 (246' 0")	14.9	48' 10"	80.00	76.3	250' 4"	27 700	61 000	29 500	65 000
	16.0	52' 5"	79.16	76.1	249' 8"	27 100	59 700	29 150	64 200
	18.0	59' 0"	77.60	75.7	248' 4"	26 200	57 700	28 550	62 900
	20.0	65' 7"	76.03	75.2	246' 8"	25 300	55 700	27 750	61 100
	22.0	72' 2"	74.44	74.7	245' 1"	24 400	53 700	26 100	57 500
	24.0	78' 8"	72.85	74.1	243' 1"	23 600	52 000	23 050	50 800
	26.0	85' 3"	71.24	73.4	240' 9"	22 100	48 700	20 500	45 100
	28.0	91' 10"	69.61	72.7	238' 6"	19 800	43 600	18 350	40 400
	30.0	98' 5"	67.97	71.9	235' 10"	17 850	39 300	16 550	36 400
	32.0	104' 11"	66.31	71.1	233' 3"	16 200	35 700	15 000	33 000
	34.0	111' 6"	64.63	70.1	229' 11"	14 750	32 500	13 650	30 000
	36.0	118' 1"	62.92	69.1	226' 8"	13 450	29 600	12 450	27 400
	38.0	124' 8"	61.18	68.1	223' 5"	12 350	27 200	11 400	25 100
	40.0	131' 2"	59.42	66.9	219' 5"	11 350	25 000	10 450	23 000
	42.0	137' 9"	57.62	65.7	215' 6"	10 400	22 900	9 600	21 100
	44.0	144' 4"	55.79	64.3	210' 11"	9 600	21 100	8 850	19 500
	46.0	150' 11"	53.91	62.9	206' 4"	8 850	19 500	8 150	17 900
	48.0	157' 5"	51.99	61.4	201' 5"	8 200	18 000	7 550	16 600
	50.0	164' 0"	50.02	59.8	196' 2"	7 600	16 700	6 950	15 300
	52.0	170' 7"	47.98	58.0	190' 3"	7 050	15 500	6 450	14 200
	54.0	177' 2"	45.88	56.1	184' 0"	6 500	14 300	5 950	13 100
	56.0	183' 8"	43.70	54.1	177' 6"	6 000	13 200	5 500	12 100
	58.0	190' 3"	41.43	51.9	170' 3"	5 500	12 100	5 100	11 200
	60.0	196' 10"	39.05	49.5	162' 4"	5 050	11 100	4 750	10 400
62.0	203' 5"	36.54	46.9	153' 10"	4 600	10 100	4 400	9 700	
64.0	209' 11"	33.86	44.0	144' 4"	4 200	9 250	4 050	8 920	
78.0 (255' 11")	15.4	50' 6"	80.00	79.3	260' 2"	25 100	55 300	26 750	58 900
	16.0	52' 5"	79.58	79.2	259' 10"	24 800	54 600	26 600	58 600
	18.0	59' 0"	78.08	78.8	258' 6"	23 900	52 600	26 000	57 300
	20.0	65' 7"	76.57	78.3	256' 10"	23 100	50 900	25 400	55 900
	22.0	72' 2"	75.06	77.8	255' 3"	22 200	48 900	24 800	54 600
	24.0	78' 8"	73.53	77.2	253' 3"	21 400	47 100	22 850	50 300
	26.0	85' 3"	71.99	76.6	251' 3"	20 700	45 600	20 300	44 700
	28.0	91' 10"	70.43	75.9	249' 0"	19 600	43 200	18 150	40 000
	30.0	98' 5"	68.86	75.2	246' 8"	17 650	38 900	16 350	36 000
	32.0	104' 11"	67.28	74.3	243' 9"	16 000	35 200	14 800	32 600
	34.0	111' 6"	65.67	73.5	241' 1"	14 550	32 000	13 450	29 600
	36.0	118' 1"	64.04	72.5	237' 10"	13 250	29 200	12 250	27 000
	38.0	124' 8"	62.39	71.5	234' 7"	12 100	26 600	11 200	24 600
	40.0	131' 2"	60.72	70.4	230' 11"	11 100	24 400	10 250	22 500
	42.0	137' 9"	59.01	69.2	227' 0"	10 200	22 400	9 400	20 700
	44.0	144' 4"	57.28	68.0	223' 1"	9 400	20 700	8 650	19 000
	46.0	150' 11"	55.51	66.6	218' 6"	8 650	19 000	7 950	17 500
	48.0	157' 5"	53.70	65.2	213' 11"	8 000	17 600	7 350	16 200
	50.0	164' 0"	51.85	63.6	208' 8"	7 350	16 200	6 750	14 800
	52.0	170' 7"	49.95	62.0	203' 5"	6 800	14 900	6 250	13 700
	54.0	177' 2"	47.99	60.2	197' 6"	6 300	13 800	5 750	12 600
	56.0	183' 8"	45.97	58.4	191' 7"	5 700	12 500	5 300	11 600
	58.0	190' 3"	43.88	56.3	184' 8"	5 200	11 400	4 900	10 800
	60.0	196' 10"	41.70	54.1	177' 6"	4 750	10 400	4 550	10 000
62.0	203' 5"	39.43	51.8	169' 11"	4 300	9 470	4 200	9 250	
64.0	209' 11"	37.04	49.2	161' 5"	3 900	8 590	3 850	8 480	

BOOM LENGTH	WORKING RADIUS		BOOM ANGLE	BOOM POINT HEIGHT		RATED LOAD			
						BS RATING		PCSA RATING	
	m (ft. in)	m	ft. in	degree	m	ft. in	kg	lb	kg
81.0 (265' 9")	16.0	52' 5"	79.97	82.2	269' 8"	22 200	48 900	24 250	53 400
	18.0	59' 0"	78.53	81.9	268' 8"	21 300	46 900	23 100	50 900
	20.0	65' 7"	77.08	81.4	267' 0"	20 600	45 400	22 550	49 700
	22.0	72' 2"	75.62	80.9	265' 5"	19 800	43 600	22 050	48 600
	24.0	78' 8"	74.16	80.4	263' 9"	19 000	41 800	21 450	47 200
	26.0	85' 3"	72.68	79.8	261' 9"	18 400	40 500	20 300	44 700
	28.0	91' 10"	71.19	79.1	259' 6"	17 700	39 000	18 200	40 100
	30.0	98' 5"	69.68	78.4	257' 2"	17 100	37 600	16 350	36 000
	32.0	104' 11"	68.16	77.6	254' 7"	16 000	35 200	14 800	32 600
	34.0	111' 6"	66.63	76.7	251' 7"	14 550	32 000	13 450	29 600
	36.0	118' 1"	65.07	75.8	248' 8"	13 250	29 200	12 250	27 000
	38.0	124' 8"	63.50	74.9	245' 8"	12 100	26 600	11 200	24 600
	40.0	131' 2"	61.90	73.8	242' 1"	11 100	24 400	10 250	22 500
	42.0	137' 9"	60.28	72.7	238' 6"	10 200	22 400	9 400	20 700
	44.0	144' 4"	58.64	71.5	234' 7"	9 400	20 700	8 600	18 900
	46.0	150' 11"	56.96	70.2	230' 3"	8 650	19 000	7 950	17 500
	48.0	157' 5"	55.25	68.9	226' 0"	7 950	17 500	7 300	16 000
	50.0	164' 0"	53.50	67.4	221' 1"	7 300	16 000	6 750	14 800
	52.0	170' 7"	51.71	65.9	216' 2"	6 700	14 700	6 200	13 600
	54.0	177' 2"	49.88	64.2	210' 7"	6 150	13 500	5 700	12 500
	56.0	183' 8"	48.00	62.5	205' 0"	5 600	12 300	5 250	11 500
	58.0	190' 3"	46.05	60.6	198' 9"	5 150	11 300	4 850	10 600
	60.0	196' 10"	44.05	58.6	192' 3"	4 650	10 200	4 450	9 810
	62.0	203' 5"	41.96	56.4	185' 0"	4 200	9 250	4 100	9 030
64.0	209' 11"	39.79	54.1	177' 6"	3 800	8 370	3 800	8 370	
84.0 (275' 7")	16.5	54' 1"	79.99	85.2	279' 6"	20 100	44 300	22 150	48 800
	18.0	59' 0"	78.94	84.9	278' 6"	19 600	43 200	21 700	47 800
	20.0	65' 7"	77.55	84.5	277' 2"	18 800	41 400	21 150	46 600
	22.0	72' 2"	76.15	84.0	275' 7"	18 100	39 900	20 650	45 500
	24.0	78' 8"	74.74	83.5	273' 11"	17 400	38 300	20 150	44 400
	26.0	85' 3"	73.32	82.9	271' 11"	16 800	37 000	19 550	43 100
	28.0	91' 10"	71.88	82.3	270' 0"	16 100	35 400	18 100	39 900
	30.0	98' 5"	70.44	81.6	267' 8"	15 500	34 100	16 300	35 900
	32.0	104' 11"	68.98	80.8	265' 1"	15 000	33 000	14 700	32 400
	34.0	111' 6"	67.51	80.0	262' 5"	14 450	31 800	13 350	29 400
	36.0	118' 1"	66.02	79.1	259' 6"	13 150	28 900	12 150	26 700
	38.0	124' 8"	64.52	78.2	256' 6"	12 050	26 500	11 100	24 400
	40.0	131' 2"	62.99	77.2	253' 3"	11 000	24 200	10 150	22 300
	42.0	137' 9"	61.45	76.1	249' 8"	10 100	22 200	9 300	20 500
	44.0	144' 4"	59.88	75.0	246' 0"	9 300	20 500	8 550	18 800
	46.0	150' 11"	58.28	73.8	242' 1"	8 550	18 800	7 850	17 300
	48.0	157' 5"	56.66	72.5	237' 10"	7 850	17 300	7 200	15 800
	50.0	164' 0"	55.01	71.1	233' 3"	7 200	15 800	6 650	14 600
	52.0	170' 7"	53.32	69.7	228' 8"	6 600	14 550	6 100	13 400
	54.0	177' 2"	51.59	68.1	223' 5"	6 050	13 300	5 650	12 400
	56.0	183' 8"	49.82	66.5	218' 2"	5 500	12 100	5 200	11 400
	58.0	190' 3"	48.00	64.7	212' 3"	5 000	11 000	4 750	10 400
	60.0	196' 10"	46.13	62.8	206' 0"	4 550	10 000	4 400	9 700
	62.0	203' 5"	44.20	60.8	199' 5"	4 100	9 030	4 000	8 810
64.0	209' 11"	42.20	58.7	192' 7"	3 650	8 040	3 700	8 150	

BOOM LENGTH	WORKING RADIUS		BOOM ANGLE	BOOM POINT HEIGHT		RATED LOAD			
						BS RATING		PGSA RATING	
	m (ft in)	m ft in	degree	m ft in	kg lb	kg lb	kg lb	kg lb	
87.0 (285'5")	17.0	55' 9"	80.00	88.2	289' 4"	18 850	41 500	20 100	44 300
	18.0	59' 0"	79.33	88.0	288' 8"	18 650	41 100	19 900	43 800
	20.0	65' 7"	77.99	87.6	287' 4"	18 000	39 600	19 500	42 900
	22.0	72' 2"	76.63	87.1	285' 9"	17 300	38 100	19 000	41 800
	24.0	78' 8"	75.28	86.6	284' 1"	16 800	37 000	18 600	41 000
	26.0	85' 3"	73.91	86.0	282' 1"	16 250	35 800	18 200	40 100
	28.0	91' 10"	72.53	85.4	280' 2"	15 600	34 300	17 700	39 000
	30.0	98' 5"	71.14	84.8	278' 2"	15 000	33 000	16 000	35 200
	32.0	104' 11"	69.74	84.0	275' 7"	14 350	31 600	14 450	31 800
	34.0	111' 6"	68.33	83.3	273' 3"	13 600	29 900	13 050	28 700
	36.0	118' 1"	66.90	82.4	270' 4"	12 850	28 300	11 850	26 100
	38.0	124' 8"	65.46	81.5	267' 4"	11 750	25 900	10 800	23 800
	40.0	131' 2"	64.00	80.6	264' 5"	10 700	23 500	9 850	21 700
	42.0	137' 9"	62.52	79.6	261' 2"	9 800	21 600	9 000	19 800
	44.0	144' 4"	61.02	78.5	257' 6"	9 000	19 800	8 250	18 100
	46.0	150' 11"	59.50	77.3	253' 7"	8 200	18 000	7 550	16 600
	48.0	157' 5"	57.95	76.1	249' 8"	7 500	16 500	6 900	15 200
	50.0	164' 0"	56.38	74.8	245' 5"	6 850	15 100	6 350	13 900
	52.0	170' 7"	54.78	73.4	240' 9"	6 250	13 700	5 800	12 700
	54.0	177' 2"	53.15	71.9	235' 10"	5 650	12 400	5 300	11 600
	56.0	183' 8"	51.48	70.4	230' 11"	5 100	11 200	4 850	10 600
	58.0	190' 3"	49.77	68.7	225' 4"	4 550	10 000	4 450	9 810
	60.0	196' 10"	48.01	66.9	219' 5"	4 100	9 030	4 050	8 920
	62.0	203' 5"	46.20	65.1	213' 7"	3 650	8 040	3 700	8 150
64.0	209' 11"	44.34	63.1	207' 0"	3 200	7 050	3 400	7 490	
93.0 (305'1")	18.0	59' 0"	80.00	94.1	308' 8"	17 100	37 600	17 500	38 500
	20.0	65' 7"	78.77	93.7	307' 5"	16 500	36 300	17 100	37 600
	22.0	72' 2"	77.51	93.3	306' 1"	15 900	35 000	16 700	36 800
	24.0	78' 8"	76.25	92.8	304' 5"	15 400	33 900	16 250	35 800
	26.0	85' 3"	74.97	92.3	302' 10"	14 800	32 600	15 900	35 000
	28.0	91' 10"	73.69	91.7	300' 10"	14 300	31 500	15 500	34 100
	30.0	98' 5"	72.40	91.1	298' 10"	13 800	30 400	15 200	33 500
	32.0	104' 11"	71.10	90.4	296' 7"	13 300	29 300	14 000	30 800
	34.0	111' 6"	69.79	89.7	294' 3"	12 800	28 200	12 650	27 800
	36.0	118' 1"	68.47	88.9	291' 8"	12 400	27 300	11 450	25 200
	38.0	124' 8"	67.14	88.1	289' 0"	11 350	25 000	10 400	22 900
	40.0	131' 2"	65.79	87.2	286' 1"	10 350	22 800	9 450	20 800
	42.0	137' 9"	64.43	86.3	283' 1"	9 400	20 700	8 600	18 900
	44.0	144' 4"	63.05	85.3	279' 10"	8 600	18 900	7 800	17 100
	46.0	150' 11"	61.66	84.2	276' 3"	7 800	17 100	7 100	15 600
	48.0	157' 5"	60.25	83.1	272' 7"	7 100	15 600	6 500	14 300
	50.0	164' 0"	58.81	81.9	268' 8"	6 300	13 800	5 900	13 000
	52.0	170' 7"	57.36	80.6	264' 5"	5 650	12 400	5 400	11 900
	54.0	177' 2"	55.88	79.3	260' 2"	5 050	11 100	4 900	10 800
	56.0	183' 8"	54.37	77.9	255' 7"	4 500	9 920	4 450	9 810
	58.0	190' 3"	52.84	76.4	250' 8"	3 950	8 700	4 050	8 920
	60.0	196' 10"	51.27	74.8	245' 5"	3 500	7 710	3 650	8 040
	62.0	203' 5"	49.66	73.2	240' 2"	3 050	6 720	3 300	7 270
	64.0	209' 11"	48.02	71.4	234' 3"	2 600	5 730	2 950	6 500

Rated Load for Main Boom

Notes:

- 1) The rated loads shown are based on the machine on firm level ground without traveling.
- 2) The rated loads shown include the weights of all lifting attachments, such as hook and bucket. The load to be actually lifted is the rated load minus the weight of all lifting attachments.
- 3) The jib can be attached to light-duty service boom with mast the length listed below.

Jib length	13.0 m (42'8")	19.0 m (62'4")	25.0 m (82'0")	31.0 m (101'8")	Aux. jib
Boom length	45.0 m (147'7")	45.0 m (147'7")	45.0 m (147'7")	15.0 m (49'2")	15.0 m (49'2") to 87.0 m (285'5")
	84.0 m (275'7")	81.0 m (265'9")	78.0 m (255'11")	87.0 m (285'5")	

- 4) The auxiliary jib can be attached to heavy-duty service and light-duty service of 15.0 m (49'2") to 87.0 m (285'5") long.
- 5) The rated load for auxiliary jib is equal to that of the main boom at the same working radius, but does not exceed maximum rated load 12 500 kg (27 600 lb).
- 6) Counterweight is 60 000 kg (132 000 lb).
- 7) The loads marked by are based upon structural limitation of the machine.
- 8) The intermediate boom suspension rope is required when boom length is more than 87.0 m (285'5").

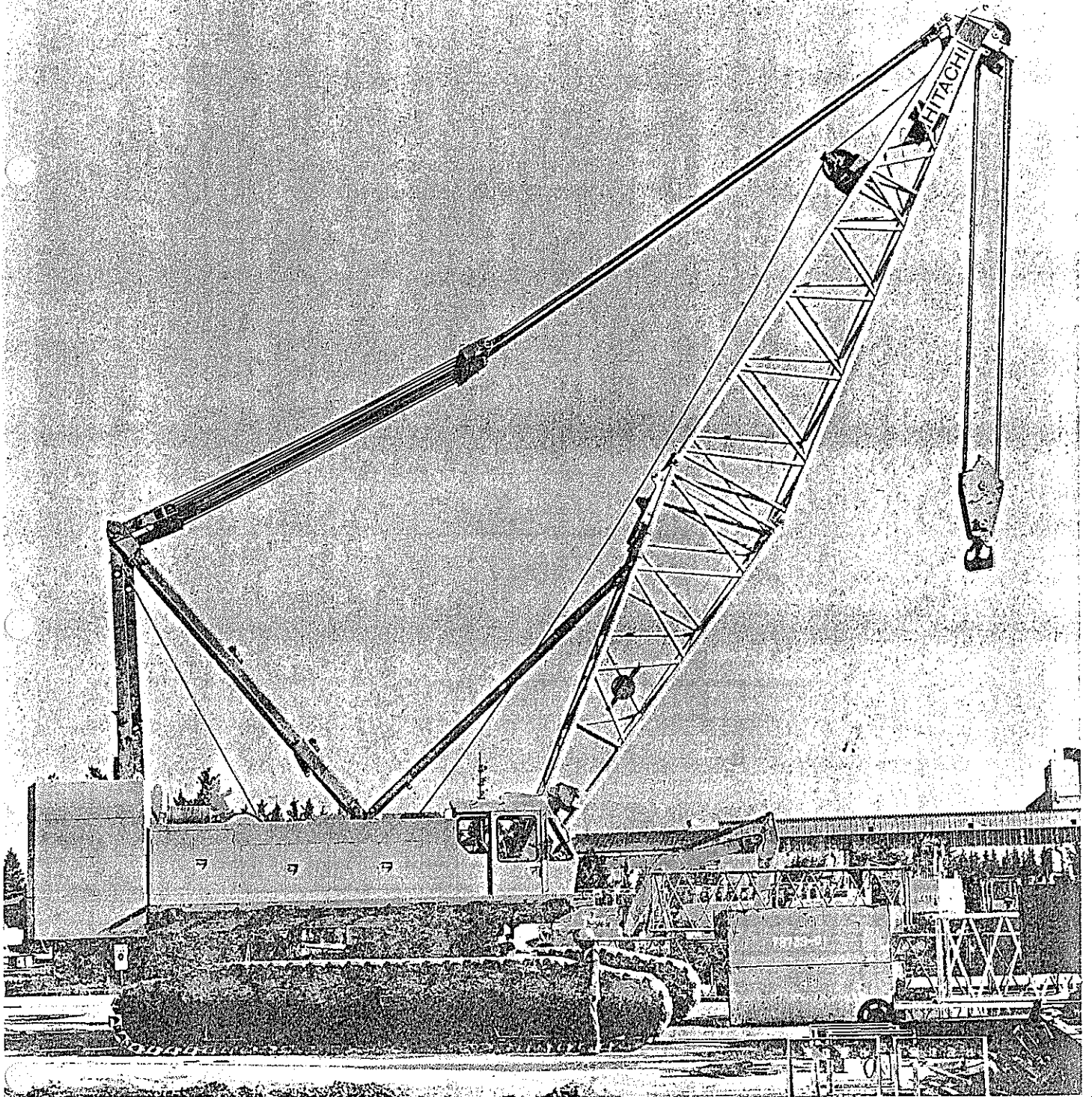
Rated Load for Jib

Maximum jib rating

Jib length		13.0 m (42'8")	19.0 m (62'4")	25.0 m (82'0")	31.0 m (101'8")
Jib offset angle					
Max. rated load	15°	12 500 kg (27 600 lb)	8 000 kg (17 640 lb)	5 000 kg (11 020 lb)	3 000 kg (6 610 lb)
	30°	9 000 kg (19 840 lb)	6 000 kg (13 230 lb)	4 600 kg (10 140 lb)	2 600 kg (5 730 lb)

Notes:

- 1) The rated load for jib is not equal to that of the main boom at the same working radius. So careful attention must be paid to this. Detail of the rated loads for jib is shown in the operating manual.
- 2) The jib offset angle to the main boom is under loaded condition.



Main Boom Construction

Boom length	Available hook	Boom construction
15.0 m (49'2")		
18.0 m (59'0")		
21.0 m (68'10")		
24.0 m (78'8")	capacity hook	
27.0 m (88'7")	capacity hook	
30.0 m (98'5")	capacity hook	
33.0 m (108'3")	capacity hook	
36.0 m (118'1")	capacity hook	
39.0 m (127'11")	capacity hook	
42.0 m (137'10")	capacity hook	

Heavy-duty service

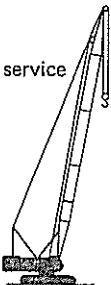
Boom
 A: Lower boom 7.5 m (24'7")
 B: Upper boom 7.5 m (24'7")
 3: Boom insert 3.0 m (9'10")
 6: Boom insert 6.0 m (19'8")
 9: Boom insert 9.0 m (29'6")

Light-duty service without mast

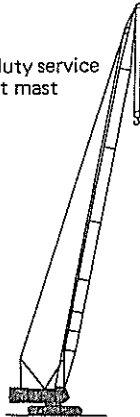
Light-duty service with mast and hanger for intermediate boom suspension rope

Boom
 A: Lower boom 7.5 m (24'7")
 B': Upper boom 10.5 m (34'5")
 3: Boom insert 3.0 m (9'10")
 6: Boom insert 6.0 m (19'8")
 9: Boom insert 9.0 m (29'6")
 9': Boom insert 9.0 m (29'6")
 (with hanger for intermediate boom suspension rope)
 12: Boom insert 12.0 m (39'4")

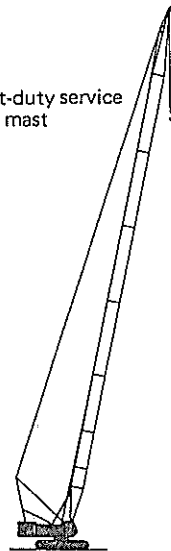
Heavy-duty service



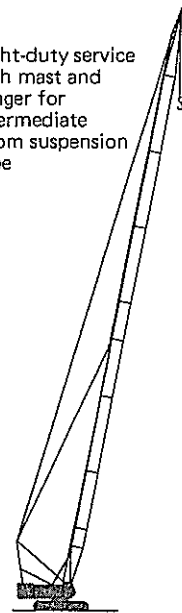
Light-duty service without mast



Light-duty service with mast



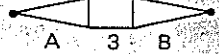
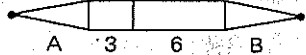
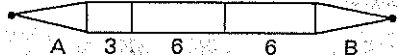
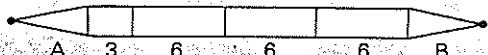
Light-duty service with mast and hanger for intermediate boom suspension rope



Boom length	Available hook		Boom construction
45.0 m (147'7")			
48.0 m (157'5")			
50.0 m (164'3")	100 000 kg (220 000 lb) capacity hook	60 000 kg (132 300 lb) capacity hook	
54.0 m (177'2")			
57.0 m (187'0")			
60.0 m (196'10")			
63.0 m (206'8")			
66.0 m (216'6")			
69.0 m (226'5")			
72.0 m (236'2")			
75.0 m (246'1")			
78.0 m (255'11")			
81.0 m (265'9")			
84.0 m (275'7")			
87.0 m (285'5")			
93.0 m (305'1")			

Jib & Auxiliary Construction

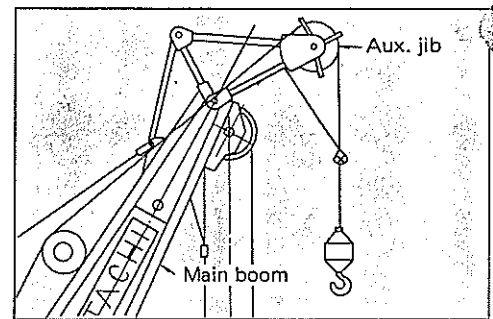
Jib Construction

Jib length	Construction
13.0 m (42'8")	
19.0 m (62'4")	
25.0 m (82'0")	
31.0 m (101'8")	

- A: Lower jib 5.0 m (16'5")
- B: Upper jib 5.0 m (16'5")
- 3: Jib insert 3.0 m (9'10")
- 6: Jib insert 6.0 m (19'8")

Auxiliary Jib Construction

Auxiliary jib can be attached to the main boom of 15 m (49'3") to 87 m (285'5") long.
(Attachable to either heavy-duty or light-duty service)



Available Hook

12.5-tonne
For jib or auxiliary jib

Standard and Optional Equipment for Liftcrane

Standard equipment		Optional equipment
<ul style="list-style-type: none"> • Basic boom for heavy-duty service (upper and lower booms) • Main and auxiliary hoist drums • Main hoist and boom hoist ropes • 200-tonne hook • Load indicator (electric type) • Boom angle indicator (mechanical type) • Counterweights • Hook/boom overhoist prevention device • Boom backstop • Drum pawl locks for all drums • Swing lock • Cab heater • Wiper (front seal) • Wiper (skylight) 	<ul style="list-style-type: none"> • Under cover • Swing parking brake • Travel brakes • Sun visor • Floor mat • Magazine pocket • Cigarette lighter • Ashtray • Room lamp • Fuel gauge • Head lights • Rear view mirrors • Rear view mirror for boom hoist drum • Electric refueling pump 	<ul style="list-style-type: none"> • Upper boom 10.5 m (34'5") for light-duty service • Boom insert 3.0 m (9'10"), 6.0 m (19'8"), 9.0 m (29'6"), 9.0 m* (29'6") and 12.0 m (39'4") • Boom mast • Intermediate boom suspension rope • Basic jib assembly 13.0 m (42'8") • Jib insert 6.0 m (19'8") • Auxiliary hoist rope • Jib hook overhoist prevention device • Hooks: 100-tonne, 25-tonne, 60-tonne, 12.5-tonne • Anemometer • Radio communicator • Cab cooler • Radio • Gantry raising/lowering cylinder • Hydraulic swing circle clamping device • Upper/lower knock-down outrigger • Side frame removal cylinder • Side frame retract jack (hand operating type) • Sidewalk • Fan • Fire extinguisher • Swinging alarm • Skylight protector • Moment limiter

* hanger for intermediate boom suspension rope.