

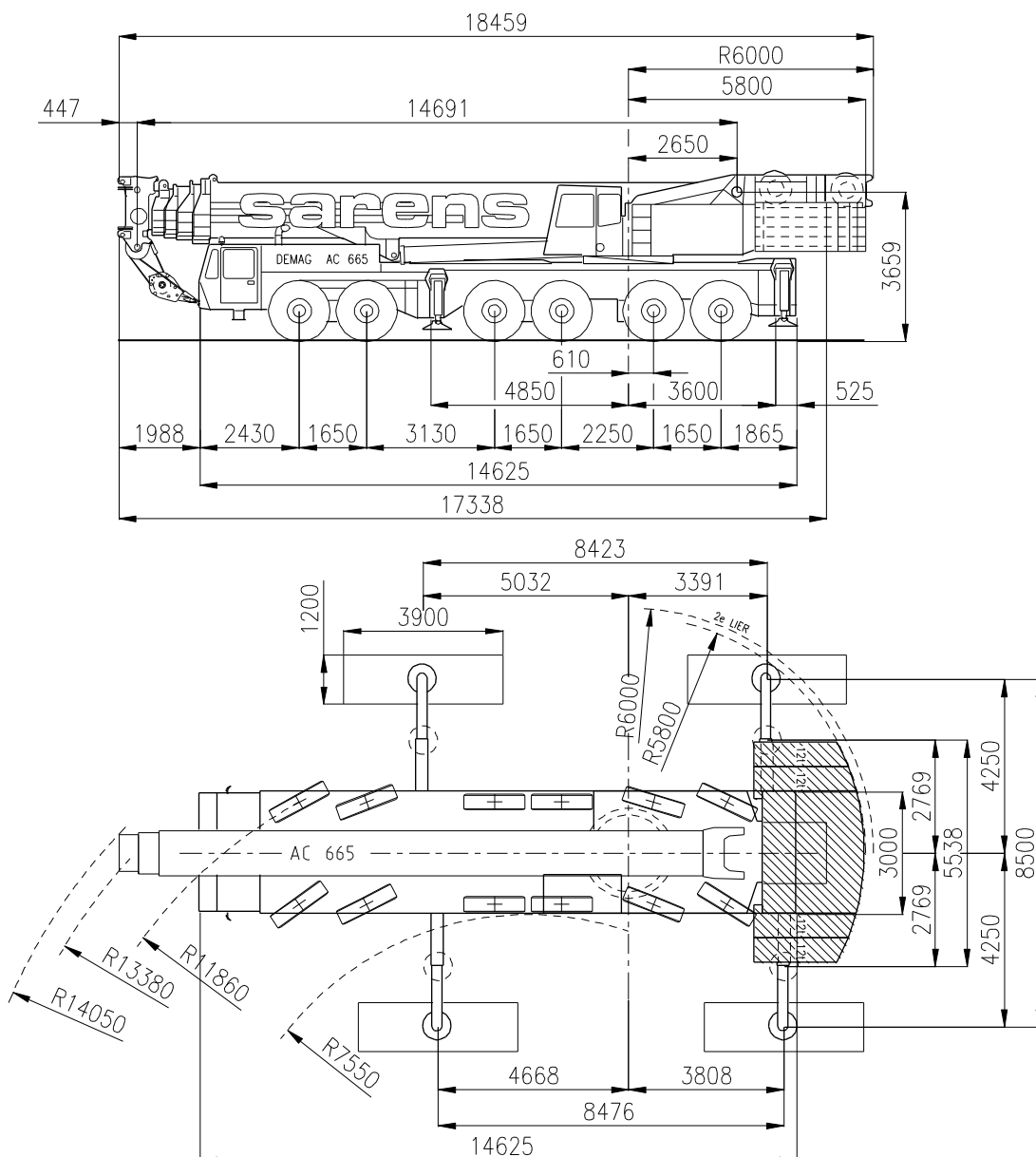


sarens
group

www.sarens.com

TEREX AC 665

275 TON



nothing too heavy, nothing too high





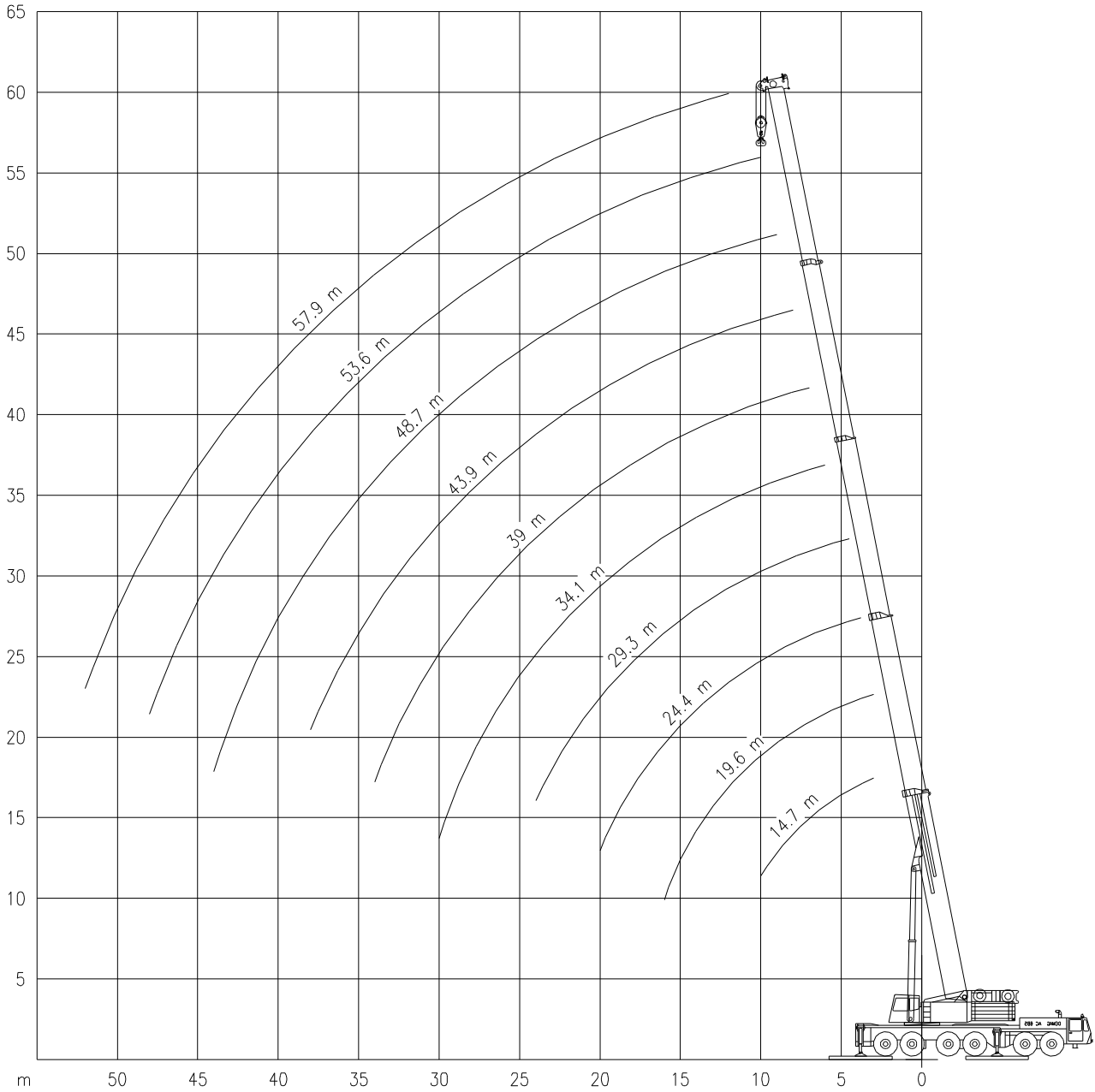
DEMAG AC 665

Working ranges
Portées

275 TON

Arbeitsbereiche
Werkbereich

Ha





DEMAG AC 665

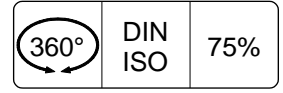
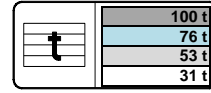
Capacities
Capacités

275 TON

Tragfähigkeiten
Capaciteiten



Ha



m	Ha										
	14.7m 1)	14.7m	19.6m	24.4m	29.3m	34.1m	39.0m	43.9m	48.7m	53.6m	57.9m
3.0	-	188.0*	145.0	-	-	-	-	-	-	-	-
3.5	-	173.0*	145.0	120.0	-	-	-	-	-	-	-
4.0	181.0*	160.0*	145.0	120.0	-	-	-	-	-	-	-
4.5	160.0*	148.0	142.0	120.0	95.0	-	-	-	-	-	-
5.0	147.0	137.0	136.0	120.0	95.0	-	-	-	-	-	-
6.0	123.0	120.0	119.0	120.0	95.0	72.0	-	-	-	-	-
7.0	104.0	104.0	102.0	103.0	88.0	72.0	60.0	-	-	-	-
8.0	90.5	90.5	89.0	89.5	80.5	72.0	60.0	55.0	-	-	-
9.0	80.0	80.0	78.5	79.0	74.0	69.0	60.0	53.0	40.0	-	-
10.0	71.5	71.5	70.0	70.5	68.5	65.0	56.0	49.5	40.0	33.0	-
12.0	-	-	57.0	57.5	56.5	58.5	48.5	43.5	39.0	33.0	25.0
14.0	-	-	47.5	48.0	47.0	50.0	42.5	38.5	35.0	30.5	25.0
16.0	-	-	40.5	41.0	40.0	42.5	38.0	34.0	31.0	27.7	23.0
18.0	-	-	-	35.5	34.5	37.0	34.5	31.0	28.2	25.3	22.0
20.0	-	-	-	31.0	30.0	32.5	31.5	28.4	25.6	23.3	20.3
22.0	-	-	-	-	26.5	29.1	28.2	26.0	23.5	21.6	18.7
24.0	-	-	-	-	23.3	26.0	25.0	23.8	21.6	20.1	17.3
26.0	-	-	-	-	-	23.3	22.3	21.9	19.9	18.9	16.0
28.0	-	-	-	-	-	21.0	20.0	20.1	18.4	17.7	14.7
30.0	-	-	-	-	-	18.1	18.0	18.2	17.1	16.6	13.7
32.0	-	-	-	-	-	-	16.4	16.4	15.9	15.5	12.7
34.0	-	-	-	-	-	-	14.9	14.9	14.8	14.5	12.0
36.0	-	-	-	-	-	-	-	13.6	13.8	13.6	11.3
38.0	-	-	-	-	-	-	-	12.4	12.8	12.7	10.6
40.0	-	-	-	-	-	-	-	-	11.7	12.0	10.1
42.0	-	-	-	-	-	-	-	-	10.7	11.2	9.6
44.0	-	-	-	-	-	-	-	-	8.4	10.4	9.1
46.0	-	-	-	-	-	-	-	-	-	9.6	8.6
48.0	-	-	-	-	-	-	-	-	-	8.3	8.2
50.0	-	-	-	-	-	-	-	-	-	-	7.7
52.0	-	-	-	-	-	-	-	-	-	-	7.0

m	Ha									
	14.7m	19.6m	24.4m	29.3m	34.1m	39.0m	43.9m	48.7m	53.6m	57.9m
3.0	183.0*	145.0	-	-	-	-	-	-	-	-
3.5	167.0*	145.0	120.0	-	-	-	-	-	-	-
4.0	154.0*	145.0	120.0	-	-	-	-	-	-	-
4.5	143.0	141.0	120.0	95.0	-	-	-	-	-	-
5.0	133.0	131.0	120.0	95.0	-	-	-	-	-	-
6.0	111.0	109.0	110.0	95.0	72.0	-	-	-	-	-
7.0	95.0	93.5	94.0	88.0	72.0	60.0	-	-	-	-
8.0	82.5	81.0	81.5	80.5	72.0	60.0	55.0	-	-	-
9.0	73.0	71.5	72.0	71.0	69.0	60.0	53.0	40.0	-	-
10.0	65.0	63.5	64.0	63.0	65.0	56.0	49.5	40.0	33.0	-
12.0	-	51.5	52.0	51.0	54.0	48.5	43.5	39.0	33.0	25.0
14.0	-	43.0	43.0	42.5	45.0	42.5	38.5	35.0	30.5	25.0
16.0	-	36.0	36.0	35.5	38.5	37.5	34.0	31.0	27.7	23.8
18.0	-	-	31.0	30.0	33.0	32.0	31.0	28.2	25.3	22.0
20.0	-	-	26.9	25.9	28.7	27.8	28.0	25.6	23.3	20.3
22.0	-	-	-	22.5	25.2	24.3	24.5	23.5	21.6	18.7
24.0	-	-	-	19.7	22.3	21.4	21.6	21.6	20.1	17.3
26.0	-	-	-	-	19.9	19.0	19.1	19.6	18.9	16.0
28.0	-	-	-	-	17.9	16.9	17.0	17.5	17.7	14.7
30.0	-	-	-	-	16.1	15.1	15.2	15.7	16.4	13.7
32.0	-	-	-	-	-	13.6	13.7	14.1	14.8	12.7
34.0	-	-	-	-	-	12.3	12.3	12.8	13.4	12.0
36.0	-	-	-	-	-	-	11.0	11.5	12.1	11.3
38.0	-	-	-	-	-	-	9.8	10.3	11.0	10.6
40.0	-	-	-	-	-	-	-	9.1	9.9	10.0
42.0	-	-	-	-	-	-	-	8.1	8.8	9.0
44.0	-	-	-	-	-	-	-	7.3	7.9	8.1
46.0	-	-	-	-	-	-	-	-	7.1	7.2
48.0	-	-	-	-	-	-	-	-	6.4	6.5
50.0	-	-	-	-	-	-	-	-	-	5.8
52.0	-	-	-	-	-	-	-	-	-	5.2

1)Over rear / En arrière / Nach hinten / Over achterzijde.

*With heavy duty attachment / avec dispositif pour charges lourdes / Mit Schwerlasteinrichtung / Met zware-lastuitrusting

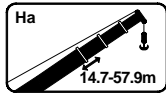


DEMAG AC 665

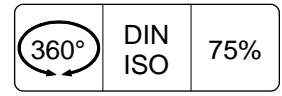
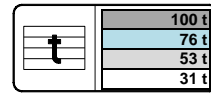
Capacities
Capacités


275 TON

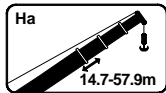
Tragfähigkeiten
Capacités



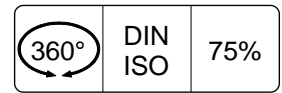
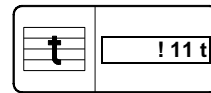
Ha




	14.7m	19.6m	24.4m	29.3m	34.1m	39.0m	43.9m	48.7m	53.6m	57.9m
m	t	t	t	t	t	t	t	t	t	t
3.0	177.0**	145.0	-	-	-	-	-	-	-	-
3.5	162.0**	145.0	120.0	-	-	-	-	-	-	-
4.0	149.0	145.0	120.0	-	-	-	-	-	-	-
4.5	135.0	134.0	120.0	95.0	-	-	-	-	-	-
5.0	122.0	120.0	120.0	95.0	-	-	-	-	-	-
6.0	101.0	100.0	100.0	95.0	72.0	-	-	-	-	-
7.0	87.0	85.0	86.0	85.0	72.0	60.0	-	-	-	-
8.0	75.0	74.0	74.0	73.0	72.0	60.0	55.0	-	-	-
9.0	66.0	65.0	65.0	64.0	67.0	60.0	53.0	40.0	-	-
10.0	59.0	57.0	58.0	57.0	60.0	56.0	49.5	40.0	33.0	-
12.0	-	45.0	46.0	45.0	48.0	47.0	43.5	39.0	33.0	25.0
14.0	-	37.0	37.0	36.0	39.0	38.0	38.0	35.0	30.5	25.0
16.0	-	31.0	31.0	30.0	33.0	32.0	32.0	31.0	27.7	23.8
18.0	-	-	26.6	25.7	28.6	27.7	27.9	28.2	25.3	22.0
20.0	-	-	22.5	21.5	24.7	23.7	24.0	24.6	23.3	20.3
22.0	-	-	-	17.8	21.1	20.1	20.3	20.9	21.6	18.7
24.0	-	-	-	14.9	18.2	17.1	17.4	18.0	18.7	17.3
26.0	-	-	-	-	15.8	14.6	14.8	15.5	16.3	16.0
28.0	-	-	-	-	13.7	12.5	12.7	13.3	14.2	14.4
30.0	-	-	-	-	12.0	10.8	10.9	11.5	12.3	12.6
32.0	-	-	-	-	-	9.3	9.4	9.9	10.7	11.0
34.0	-	-	-	-	-	8.0	8.0	8.6	9.4	9.6
36.0	-	-	-	-	-	-	6.8	7.4	8.2	8.4
38.0	-	-	-	-	-	-	5.8	6.3	7.1	7.3
40.0	-	-	-	-	-	-	-	5.4	6.1	6.3
42.0	-	-	-	-	-	-	-	4.6	5.3	5.4
44.0	-	-	-	-	-	-	-	3.8	4.5	4.7
46.0	-	-	-	-	-	-	-	-	3.8	4.0
48.0	-	-	-	-	-	-	-	-	3.2	3.3
50.0	-	-	-	-	-	-	-	-	-	2.8
52.0	-	-	-	-	-	-	-	-	-	2.3



Ha



	14.7m	19.6m	24.4m	29.3m	34.1m	39.0m	43.9m	48.7m	53.6m	57.9m
m	t	t	t	t	t	t	t	t	t	t
3.0	160.0**	123.0	-	-	-	-	-	-	-	-
3.5	126.0	123.0	102.0	-	-	-	-	-	-	-
4.0	110.0	109.0	102.0	-	-	-	-	-	-	-
4.5	98.0	99.0	98.0	81.0	-	-	-	-	-	-
5.0	89.0	87.5	88.0	81.0	-	-	-	-	-	-
6.0	72.0	70.5	71.0	70.0	61.0	-	-	-	-	-
7.0	60.0	57.0	58.0	57.0	55.0	51.0	-	-	-	-
8.0	49.0	47.0	48.0	46.0	52.0	44.5	44.5	-	-	-
9.0	38.0	36.0	37.0	36.0	40.0	39.0	37.0	38.0	-	-
10.0	29.9	27.7	28.5	27.1	32.0	31.0	31.0	30.0	29.0	-
12.0	-	17.1	17.7	16.6	21.0	19.7	20.0	20.3	20.5	19.0
14.0	-	11.2	11.7	10.6	14.6	13.4	13.7	14.0	14.4	14.0
16.0	-	7.5	7.9	6.8	10.5	9.4	9.6	9.9	10.4	10.1
18.0	-	-	5.1	3.8	7.6	6.6	6.7	7.0	7.5	7.3
20.0	-	-	2.8	1.5	5.5	4.4	4.5	4.9	5.4	5.3
22.0	-	-	-	-	3.8	2.5	2.8	3.2	3.7	3.7
24.0	-	-	-	-	2.3	1.0	1.3	1.9	2.4	2.4
26.0	-	-	-	-	1.1	-	-	-	1.4	1.4

! 11 t : Only with secondary hoist or spare weight / Seulement avec treuil secondaire ou poids de remplacement / Nur mit Hubwerk 2 oder Ersatzgewicht / Enkel met 2de hijslier of vervangingsgewicht.

** : With heavy duty attachment / avec dispositif pour charges lourdes / Mit Schwerlasteinrichtung / Met zware-lastuitrusting



DEMAG AC 665

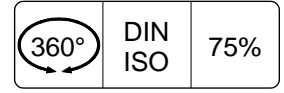
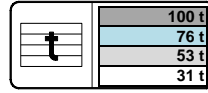
Capacities
Capacités

275 TON

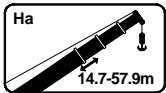
Tragfähigkeiten
Capacités



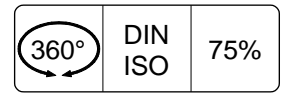
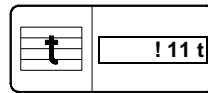
Ha



	14.7m	19.6m	24.4m	29.3m	34.1m	39.0m	43.9m	48.7m	53.6m	57.9m
m	t	t	t	t	t	t	t	t	t	t
3.0	156.0**	137.0	-	-	-	-	-	-	-	-
3.5	141.0	137.0	114.0	-	-	-	-	-	-	-
4.0	128.0	126.0	114.0	-	-	-	-	-	-	-
4.5	114.0	113.0	113.0	90.0	-	-	-	-	-	-
5.0	102.0	101.0	101.0	90.0	-	-	-	-	-	-
6.0	74.0	71.0	72.0	71.0	68.0	-	-	-	-	-
7.0	54.0	52.0	53.0	51.0	56.0	55.0	-	-	-	-
8.0	42.0	40.0	40.0	39.0	44.0	43.0	43.0	-	-	-
9.0	33.0	32.0	32.0	31.0	35.0	34.0	34.0	35.0	-	-
10.0	28.0	26.3	26.8	25.8	29.6	28.5	28.8	29.6	30.0	-
12.0	-	18.5	18.9	17.9	21.4	20.4	20.7	21.3	22.1	21.8
14.0	-	13.4	13.8	12.9	16.1	15.1	15.4	16.0	16.8	16.6
16.0	-	10.0	10.2	9.4	12.4	11.5	11.7	12.3	13.1	12.9
18.0	-	-	7.7	6.8	9.7	8.8	9.0	9.6	10.3	10.1
20.0	-	-	5.7	4.5	7.6	6.7	7.0	7.5	8.1	8.0
22.0	-	-	-	2.7	6.0	5.1	5.3	5.8	6.3	6.3
24.0	-	-	-	1.3	4.7	3.5	3.7	4.4	4.9	4.9
26.0	-	-	-	-	3.4	2.2	2.4	3.1	3.8	3.7
28.0	-	-	-	-	2.4	1.2	1.4	2.0	2.8	2.8
30.0	-	-	-	-	1.5	-	-	1.0	1.8	1.9
32.0	-	-	-	-	-	-	-	-	1.0	1.2



Ha



	14.7m	19.6m	24.4m	29.3m	34.1m	39.0m	43.9m	48.7m	53.6m	57.9m
m	t	t	t	t	t	t	t	t	t	t
3.0	148.0	123.0	-	-	-	-	-	-	-	-
3.5	126.0	123.0	102.0	-	-	-	-	-	-	-
4.0	110.0	109.0	102.0	-	-	-	-	-	-	-
4.5	88.0	84.0	86.0	79.0	-	-	-	-	-	-
5.0	66.0	63.0	64.0	62.0	-	-	-	-	-	-
6.0	42.0	40.0	41.0	40.0	45.0	-	-	-	-	-
7.0	30.0	28.5	29.3	28.0	33.0	31.0	-	-	-	-
8.0	22.9	21.1	21.8	20.6	25.0	23.7	22.9	-	-	-
9.0	17.8	16.1	16.6	15.6	19.7	18.5	17.9	17.8	-	-
10.0	14.1	12.4	13.0	12.0	15.8	14.7	14.3	14.3	14.4	-
12.0	-	7.6	8.0	7.1	10.5	9.4	9.1	9.3	9.6	9.2
14.0	-	4.2	4.6	3.4	7.2	5.9	5.8	6.0	6.4	6.1
16.0	-	1.7	2.0	-	4.8	3.5	3.4	3.7	4.1	3.9
18.0	-	-	-	-	2.7	1.5	1.6	1.9	2.4	2.3
20.0	-	-	-	-	1.2	-	-	-	1.1	1.0

! 11 t : Only with secondary hoist or spare weight / Seulement avec treuil secondaire ou poids de remplacement / Nur mit Hubwerk 2 oder Ersatzgewicht / Enkel met 2de hijslier of vervangingsgewicht.

** : With heavy duty attachment / avec dispositif pour charges lourdes / Mit Schwerlasteinrichtung / Met zware-lastuitrusting



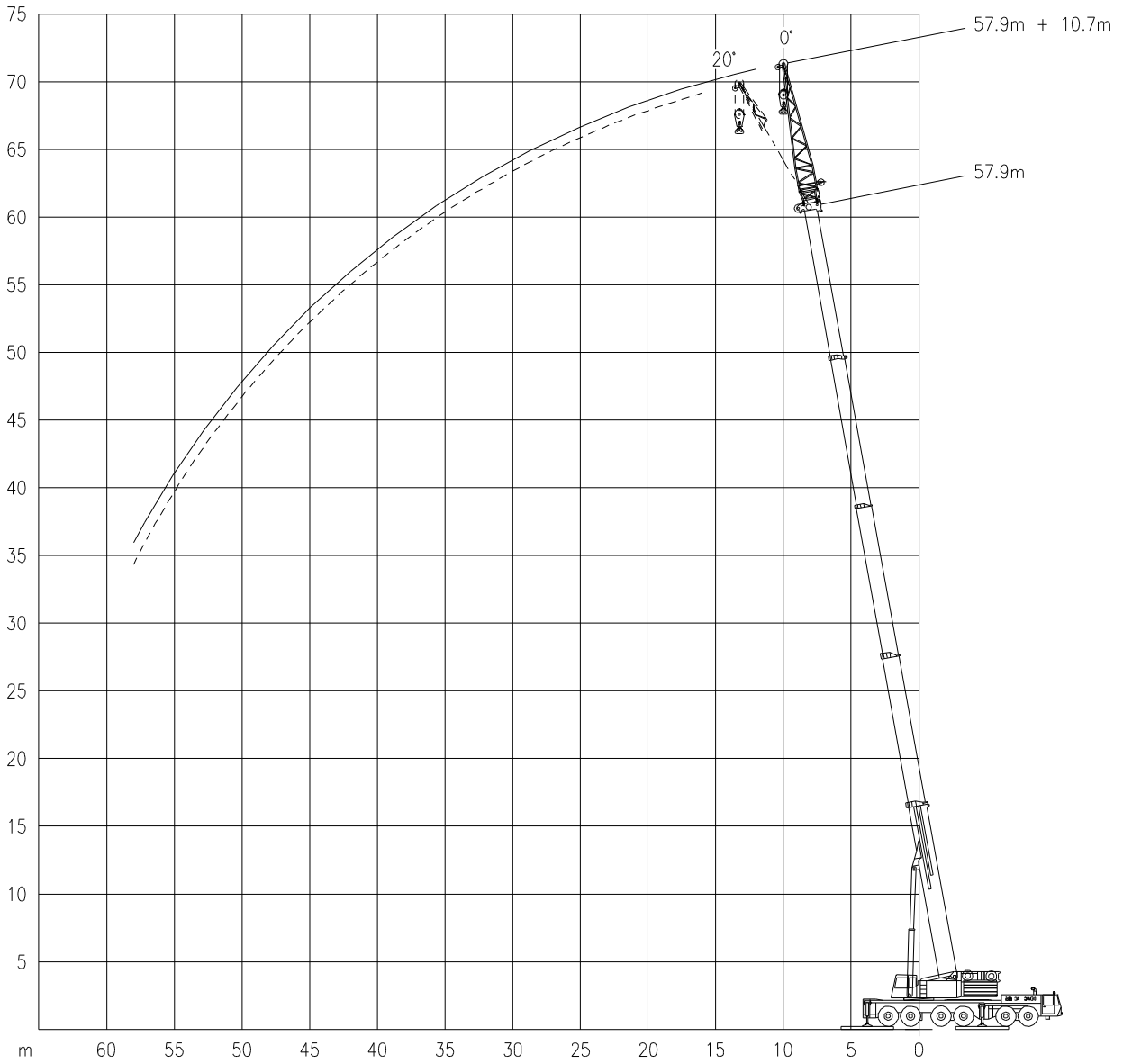
DEMAG AC 665

Working ranges
Portées

275 TON

Arbeitsbereiche
Werkbereich

HaV



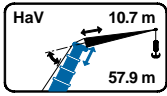


DEMAG AC 665

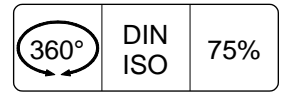
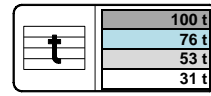
Capacities
Capacités

275 TON

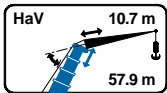
Tragfähigkeiten
Capacités



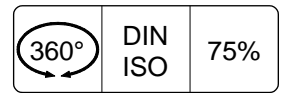
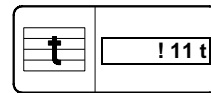
HaV



m	57.9 m			
	10.7 m		10.7 m	
	0°	20°	0°	20°
	t	t	t	t
12.0	14.3	-	14.3	-
14.0	14.3	-	14.3	-
16.0	14.3	12.1	14.3	12.1
18.0	13.8	11.9	13.8	11.9
20.0	13.0	11.6	13.0	11.6
22.0	12.2	11.2	12.2	11.2
24.0	11.5	10.8	11.5	10.8
26.0	10.8	10.4	9.7	10.4
28.0	10.1	9.9	8.1	9.2
30.0	9.5	9.5	6.8	7.8
32.0	9.0	9.1	5.6	6.5
34.0	8.6	8.6	4.6	5.4
36.0	8.2	8.3	3.6	4.4
38.0	7.8	7.9	2.8	3.5
40.0	6.8	7.4	2.1	2.8
42.0	5.9	6.5	1.5	2.1
44.0	5.1	5.7	-	1.5
46.0	4.4	4.9	-	-
48.0	3.8	4.2	-	-
50.0	3.2	3.6	-	-
54.0	2.2	2.5	-	-
58.0	1.3	1.5	-	-



HaV



m	57.9 m	
	10.7 m	
	0°	20°
	t	t
12.0	14.3	-
14.0	14.3	-
16.0	10.8	12.1
18.0	8.0	9.3
20.0	5.9	7.0
22.0	4.3	5.3
24.0	3.0	3.8
26.0	1.9	2.7
28.0	1.0	1.7
30.0	-	-
32.0	-	-
34.0	-	-
36.0	-	-
38.0	-	-
40.0	-	-
42.0	-	-
44.0	-	-
46.0	-	-
48.0	-	-
50.0	-	-
54.0	-	-
58.0	-	-

! 11 t : Only with secondary hoist or spare weight / Seulement avec treuil secondaire ou poids de remplacement / Nur mit Hubwerk 2 oder Ersatzgewicht / Enkel met 2de hijslier of vervangingsgewicht.



DEMAG AC 665

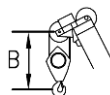
275 TON

Working speeds
Vitesses de travail

Arbeitsgeschwindigkeiten
Werksnelheden

Mechanisms Mécanismes Antriebe Aandrijvingen	Speeds Vitesses Geschwindigkeiten Snelheden	Rope diameter Diamètre du câble Seildurchmesser Kabeldiameter	Single line pull Effort sur brin simple Zulässiger Seilzug je strang Toegelaten trekkracht / part	Length of ropes Longueur des cables Länge der Seile Kabellengte
Main hoist Levage sur flèche Hubwerk 1 Hijslier 1	Max 132 m/min	26 mm	100 kN	350 m
Auxiliary hoist Levage sur fléchette Hubwerk 2 Hijslier 2	Max 132 m/min	26 mm	100 kN	470 m
Slewing gear Orientation Drehwerk Zwenkwerk	0 – 1.5 RPM			
Travel speed Vitesse sur route Fahrgeschwindigkeit Rijsnelheid	0 – 70 km/h			
Booming up Relever la flèche Aufwippen Optoppen	-1.3° - +82.5°		85 sec	
Telescope Téléscoper Teleskopieren Telescoperen	15 m - 57.9 m		330 sec	

Hook Block / Crane hook Crochet mouflé / Crochet simple



Unterflasche / Hakengehänge Kraanblok / Kraanhaak

Capacity Capacité Tragfähigkeit Capaciteit	Number of sheaves Nombre de poulies Anzahl der Rollen Aantal schijven	Number of lines Nombre de brins Strangzahl Aantal parten	Weight Poids Gewicht Gewicht	"B"
SWL 125 t	5	11	1200 kg	3.0 m
SWL 80 t	3	7	1050 kg	3.0 m
SWL 40 t	1	3	750 kg	2.7 m
SWL 12.5 t	-	1	500 kg	2.0 m