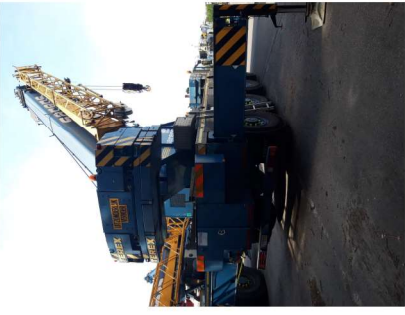


Pictures:



- MAKE : Demag
- TYPE : AC 80-2
- YEAR : 2005
- SERIAL : 4447
- CHASSIS : WMG4213485Z000737

SUPERSTRUCTURE

- LENGTH OF MAINBOOM : 50m
- HOURS : 12200
- FIXED JIB : 9.2m -17.6m
- WINCH 1 : 17mm – 250m
- COUNTERWEIGHT : 18T
- HOOKBLOCKS : 3 sheaves, balhook
- S.L.I. (Safe Load Indicator) : PAT DS350

CHASSIS

- ENGINE : 11946m² - 315KW
- HOURS : 11850
- KM : 18750
- GEARBOX : .
- AXLES : 4
- TYRES : 445/95 – R25
- OUTRIGGER BASIS : 7700 x 7000mm

PRICE

: **Upon request**