

MAINTENANCE AND ASSEMBLY

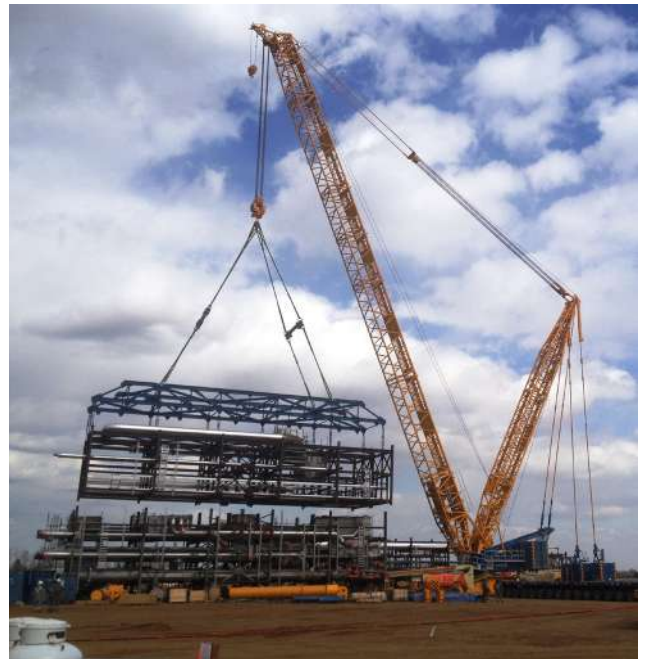


• DISCOVER OUR SCOPE

- Serving the market since 1972 through its SAMOCO division.
- Major heavy lifting and transportation operations
- Plant maintenance and shutdown support services
- Alternative lifting solutions and special projects
- Refurbishment
- Expansion
- Interventions
- Long term general maintenance
- Mechanical works

• KEY BENEFITS/SERVICES

- Maintenance partner for over 63 years
- Precision engineering and detailed planning
- Meeting clients' expectations through customised and holistic solutions
- Providing win-win solutions for every heavy lifting and special transport challenges



GENERAL INDUSTRY

- An experienced engineering team equipped with the latest software taking up the maintenance, shutdown, and related assignments globally
- Availability of wide variety of cranes and all special equipment required in the maintenance, shutdown, and related activities
- Regular maintenance of equipment ensure that all equipment perform optimally
- Our SHEQ policy guides us to provide the best services ensuring the safety, health, environment, and quality at work place
- Certified equipment and personnel
- Engineering including 3D animation

• SOLUTIONS

- Selection of mobile telescopic cranes ranging from 25T to 120T
- Comprehensive selection of lifting equipment like slings/shackles/lifting and spreader beams
- Fork lifts and telescopic handlers
- Cherry pickers, access equipment, and aerial working platforms
- Tube bundle pulling systems
- Jacking and skidding equipment
- Comprehensive range of pull-lifts, chain blocks, and jacks
- Steel and timber mats and blocking
- Trucks and trailers or agricultural type tractors and trailer units
- Man-baskets and load lines

• REFERENCES

- BASF, Antwerp, Belgium
- Bayer Cropsciences, Hurth, Germany

