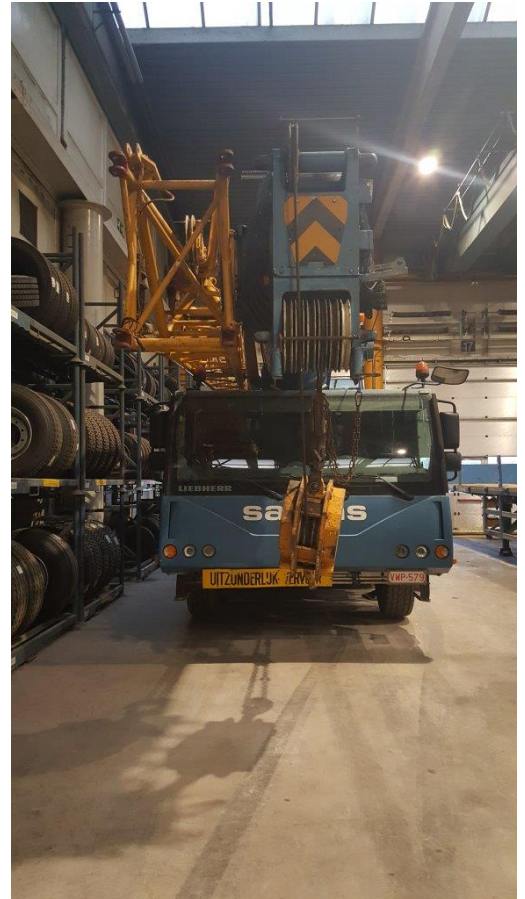


Equipment: Liebherr LTM 1095-5.1 (2350)
LOCATION: Belgium



Subject prior sales

- MAKE : LIEBHERR
- TYPE : LTM 1095-5.1
- YEAR : 2006
- SERIAL : 62650

SUPERSTRUCTURE

- ENGINE : Liebherr D934 S
- HOURS : Approx. 14.500 hs
- LENGTH OF MAINBOOM : 58m
- FIXED JIB : 19m
- WINCH 1 : 17mm – 260m
- COUNTERWEIGHT : 23T
- HOOKBLOCKS : 3sheaves + ballhook
- S.L.I. (Safe Load Indicator) : Liccon
- OTHER OPTIONS : Work area limitation, emergency stop incl. engine shutdown valve

CHASSIS

- ENGINE : Liebherr D846 TI A7
- HOURS : Approx. 5.700 hs – overhauled at 4027hs.
- KM : Approx. 105.000km
- GEARBOX : ZF- AS-TRONIC
- DRIVE : 10x8
- OTHER OPTIONS : Telma brake, emergency stop incl. engine shutdown valve

PRICE : Upon request – JLS@sarens.com