

GAS POWER PLANTS



 | **sarens**



NOTHING TOO HEAVY, NOTHING TOO HIGH

ABOUT US

WITH STATE OF THE ART EQUIPMENT AND VALUE ENGINEERING, WE OFFER OUR CLIENTS CREATIVE SOLUTIONS.

At Sarens, we have the noble mission to be the reference in crane rental services, heavy lifting, and engineered transport for our clients. With state-of-the-art equipment and value engineering, we offer our clients creative and intelligent solutions to today's heavy lifting and engineered transport challenges.

We are able to offer our clients ready-made innovative solutions thanks to our subsidiaries around the world. With more than 100 entities over 60 locations operating without borders, we are the ideal partner for small-scale to mega-scale projects.

Safety and excellence in all we do are paramount to us. We strive continuously to establish a safe environment for our personnel, the client's employees and the equipment we operate and handle.

While we continue to build our future on the foundations of our rich past and successful methods, we ensure our clients that we will stay ahead of the game with innovative approaches for your heavy lifting and specialized engineered transport needs.

We will keep breaking ground and secure that your projects are delivered in a safe, and cost-effective way, while making sure everything is on time.

Sarens actively provides heavy lift and special transport services in new built gas fired power plant projects. A dedicated sales and projects team has focused on its clients' needs and developed an efficient from factory to foundation solution.

The Sarens engineering team continues assisting in optimising crane solutions and on-site transport, depending on site conditions. New lifting and transport techniques are implemented to allow modularisation and assembly of heavier components leading to cost and time savings during installation.

A total concept can be offered with activities such as all lifting, including the erection of steel structures, the erection of casing/inlet ducts, the assembly and erection of stacks, the erection of heat exchangers, the installation of all mechanical equipment, drums, vessels, and pumps, including alignment and bolting.

OUR SERVICES

GENERAL CIVIL ENGINEERING

With over 60 years of experience in providing heavy lift and engineered transport solutions, Sarens provides a large array of services to gas fired power plant projects. The one-stop-shop services we provide makes us stand out in today's competitive international market.

We take care of the equipment transport from factory to site; our goal is to always secure our client has project-related material transferred to site without a glitch. The extra care we put on the seamless execution of transfers ensures a safe and timely project delivery.

Being active in various industries, the assembly of heavier components is nothing new to us. We will always make sure everything is in place for our client.

Take a look at the list of services we provide:

- Erection of steel structures and heat exchangers
- Installation of casing and inlet ducts
- Assembly and erection of stacks
- Installation of mechanical equipment, drums, vessels, and pumps
- Alignment and bolting

Our dedicated Sales and Project team, will be in close contact with the client and the operations. This, combined with our experienced Engineering team, will make every project we undertake a masterpiece.

All projects Sarens undertakes are in line with our SHEQ (Safety, Health, Environment, and Quality) policy. This policy aims at ensuring that all operations performed by Sarens and its employees, are executed with safety for the people, equipment, and the environment, with quality throughout the entire process.

Having Sarens as a business partner comes with many perks. Apart from the services we provide, working with us has some key benefits mentioned below:

- Optimised crane solutions and on-site transport
- New lifting and transport techniques
- Cost and time savings during installation
- Tailor-made "total concept"
- Management of lay-down area

Sarens will be able to handle every project regarding installing new gas-fired power plants. We will provide the best and most innovative heavy lifting and transport techniques there are.



NOTHING TOO HEAVY, NOTHING TOO HIGH

OUR EQUIPMENT

Sarens uses the following equipment for project execution:

- Lattice boom cranes
- Hydraulic cranes
- SPMTs
- Strand jacks
- Jacking systems

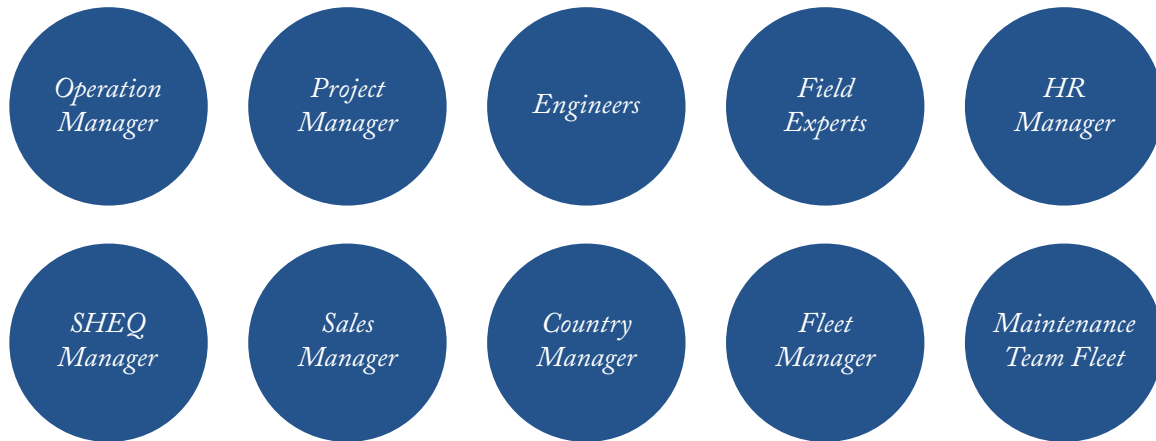




NOTHING TOO HEAVY, NOTHING TOO HIGH

OUR PEOPLE

At Sarens, we play a key role in the civil market and support our clients in the most efficient way. We rely on our people to ensure every project is executed in a structured, safe, and efficient manner. We employ engineers, lawyers, finance experts, field personnel, safety and quality advisors, and sales consultants.



WHO DO WE EMPLOY

To secure a quality-service for our clients, our team consists of a variety of professionals. We have well-established hiring procedures that guarantees us qan arsenal of dynamic and qualified experts from all around the world.



WE IMPROVE OUR TALENT

Sarens also provides constant training to employees. In this way, all of our representatives are skilled to supply Sarens with the benefits of the latest methodologies in the field both on a back-office and an on-site level. We believe in continued education and, to that end, we have our own Learning Management System, and provide SWOT analyses in our Assessment and Development centre. Through the growing opportunities we provide, our employees work in a framework of constant improvement



CASE STUDY I

SIEMENS TESSENDERLO, BELGIUM

Sarens performed the erection of a heat recovery steam generator for client Siemens at Tessenderlo, Belgium. The project included the erection of the steel structure, casing / inlet duct, stack and outlet duct, heat exchanger surfaces (harps), and drums and vessels.

Our team covered the entire project. From management to internal transportation, to assembly and erection, Sarens took full control of the execution. Four project managers were continuously present on the ground to ensure a seamless installation. The average manpower on site consisted of 37 people for assembly, welding, scaffolding, and insulation. We provided five cranes, a mix of hydraulic and lattice boom cranes, to ensure a high and continuous productivity.

The duration of the project was 10 months. This was a turnkey project for Sarens Belgium, and the first big one in the gas power plant industry. Our client chose us over the competitors because we have a wide experience in the sector, deep technical know-how, and an extensive and diversified fleet of equipment. These features supported us in order to execute the project in time and with the highest regard to safety, resulting in high client satisfaction.



NOTHING TOO HEAVY, NOTHING TOO HIGH

CASE STUDY II

MEGAPROJECT IN EGYPT

Sarens performed transport and heavy lifting for the Egypt Megaproject. The Megaproject consisted mainly of the construction of three new combined cycle natural gas power plants, each producing 4.800 MW. Siemens, under an 8 billion dollar contract, led these projects and has nominated Orascom and Elsewedy for the construction.

These Electrical power plants are located in BeniSuef, Burullus, and New Capital. The units are being installed to improve the electrical requirements of the Egyptian population and industry. When all in use, they will provide electricity for over 45 million Egyptians.

For each project, Sarens used 2 sets of the following equipment.

- 9 strand jacks 185T with individual power pack units and recoilers.
- 3 strand jacks 45T
- 16 axles of SPMTs

These types were selected by recommendation of the manufacturer and because it is the safest way to lift the boiler parts. Our equipment was containerised and shipped from Belgium and Malaysia to Egypt. After arrival at the port, a road transport of two weeks brought our material to the site. At the peak hours, Sarens worked with a team of 12 people. Our Project Manager and Project Engineer were nonstop on site during the entire construction.

Sarens was in charge of transport and lifting of all heat recovery steam generators modules of the three projects. This can be translated in a total of 192 Modules to lift in eight months. The project was executed on time and with the highest regard to our Safety, Health, Environment, and Quality policy.



OUR PROJECTS

LOCATION: Map Ta Phut, Thailand

EQUIPMENT: LR1800, CC2500, 32 SPMT axle lines

This Thai lift of 607T was executed by LR1800 with CC2500 tailing. A Goldhofer SPMT, with 32 axle lines, was used for the transportation from Map Tu Phut port to the lifting position. This installation is part of Thailand's PTT's commitment to increase fuel quality standards and reduce the fuel emissions in the region of Asia.

At one stage Sarens had nine crawler cranes on the project. Sarens in Thailand offered also an equipment rental service to support the project. This comprised of various vehicles, from personnel carriers, water-and-fuel trucks, prime movers, trailers, and also trucks.

LOCATION: Orlen, Plock, Poland

EQUIPMENT: AC 650

Sarens in Poland installed a 44T and 40m-long tank to extract gas. The power plant was located at the Orlen Refinery, the largest one in Poland.

LOCATION: Bachaquero, Venezuela

EQUIPMENT: Sarlift 2500, Sarskid

Sarens has installed new turbine generators in Venezuela for the new Bachaquero power plant. We installed these generators with our in-house developed system, the Sarlift 2500. The components, which weighed 250T each, were no problem for our lifting piece of equipment.

LOCATION: Vasilikos, Cyprus

EQUIPMENT: SPMTs, gantry, strand jacks, skidding, hydraulic crane

Sarens installed eight boiler units (weight: 125T to 175T) at the Vasilikos power plant in Cyprus for the second time.

The boiler unit first had to be lifted using a 300T crane and a combination of stretch, SPMT, gantry, and two strand jacks of 100T on top of the skidding beams that were installed on a 6m higher level. From this position the boiler unit was lifted 28m from a horizontal to a vertical position, using two strand jacks 100T and a special tail-frame placed on the sarskid system.

KEY FACTS

GAS POWER PLANTS

SARENS IS THE RECOGNIZED WORLDWIDE LEADER IN HEAVY LIFTING AND ENGINEERED TRANSPORT.

With state of the art equipment and value engineering, Sarens offers its clients creative solutions to today's heavy lift and transport challenges. With offices in more than 65 countries and dedicated employees, we are well prepared to support your next project.



9
REGIONS



65
COUNTRIES

CRANES



GIANT CRANE



HYDRAULIC CRANES



LATTICE BOOM CRANES



HEAVY LIFTING TOWER CRANES

TRANSPORT



CONVENTIONAL TRAILERS



MODULAR TRAILERS



SPMTs

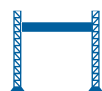
CUSTOMISED EQUIPMENT



SKIDDING



BARGES



GANTRIES



JACKING SYSTEMS



STRAND JACKS

GLOBAL PRESENCE





Sarens Bestuur nv
Autoweg 10
1861 Wolvertem - Belgium

T +32 (0) 52 319 319
F +32 (0) 52 319 329

Wim Sarens, CEO

info@sarens.com
www.sarens.com