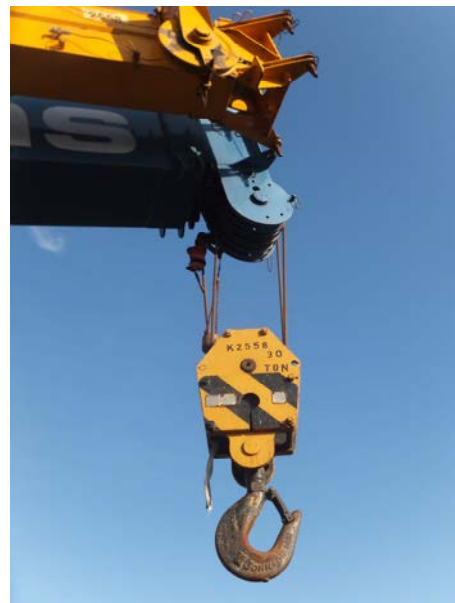


Equipment: GROVE RT 530E (2558)
LOCATION: Sarens NV HQ Wolvertem, BELGIUM



Subject to prior sale
Behoudens tussentijdse verkoop
Sauf vente intermédiaire

Equipment: GROVE RT 530E (2558)
LOCATION: Sarens NV HQ Wolvertem, BELGIUM

- MAKE	:	Grove
- BODY TYPE	:	Rough Terrain Crane
- TYPE	:	RT 530E
- DIMENSIONS	:	
• Wheelbase		3.66 m (144 in)
• Overall Crane Length		12.29 m (483.7 in)
• Overall Crane Width		2.54 m (100 in)
• Overall Crane Height		3.24 m (127 in)
• Tail-Swing		3.66 m (144 in)
- YEAR	:	2006
- SERIAL	:	225181
- CHASSIS	:	

SUPERSTRUCTURE

- ENGINE	:	/
- HOURS	:	4,826
- LENGTH OF MAINBOOM	:	8.8m - 29 m
- MAIN BOOM EXTENSION:		
- FIXED JIB	:	7.9m / 13.7m(26 to 45 ft)
- RUNNER	:	
- WINCH 1	:	16mm 137m
- COUNTERWEIGHT	:	3,81t
- HOOKBLOCK	:	30t 3sheaves
- S.L.I. (Safe Load Indicator)	:	Pat DS 350 G-C

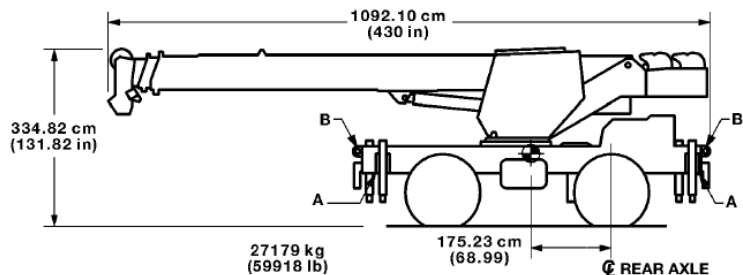
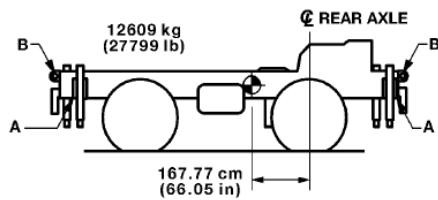
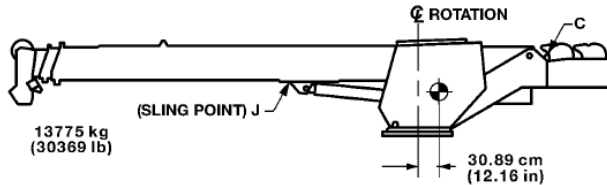
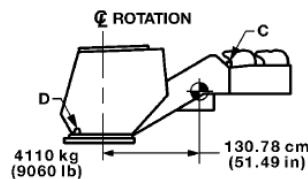
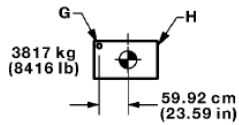
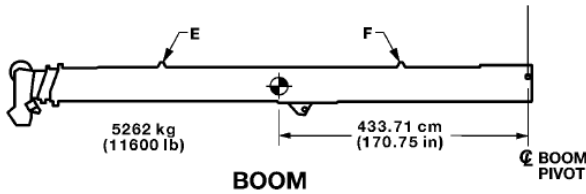
CHASSIS

- ENGINE	:	Cummins QSB5.9 FR91155
- HOURS	:	4,826
- KM	:	N/A
- GEARBOX	:	DANA 1203ft 20641
- AXLES	:	2
- TYRES	:	20.5 x 25 – 24PR earthmover type
- OUTRIGGER BASIS	:	6096mm / 5969mm
- SPEED	:	39 km/u
- TOTAL WEIGHT	:	27179 kg

PRICE

Equipment: GROVE RT 530E (2558)
LOCATION: Sarens NV HQ Wolvertem, BELGIUM

TRANSPORTATION AND LIFTING DATA RT530E-2 SERIES



FITTINGS	NO./UNIT	TOTAL UNIT			CARRIER			S/S	T/T	BOOM	CWT	FITTING CAPACITY (TONS)				
		LIFT	TOW	TIE DOWN	LIFT	TOW	TIE DOWN					LIFT	TOW	TIE DOWN		
														FORE & AFT	SIDE	DOWN
A	4	X			X							12	SEE NOTE #5			
B	4		X	X		X	X						82	25	35	7.1
C	2							X	X			7.9				
D	2								X			2.3				
E	2									X		3.2				
F	2									X		3.2				
G	2										X	2.2				
H	2										X	9.4				
J	1							X				13				

- LIFTING OF ENTIRE CRANE OR MAJOR CRANE ASSEMBLIES MUST BE ACCOMPLISHED BY UTILIZING SPECIFIC FITTINGS INDICATED ON ABOVE CHART. USE OF FITTINGS FOR PURPOSES OTHER THAN THOSE DESIGNATED ON CHART IS PROHIBITED. FITTING CAPACITIES ARE MAXIMUM ALLOWABLE LOADS PER INDIVIDUAL FITTING.
- RIGGING PERSONNEL SHALL BE RESPONSIBLE FOR PROPER SELECTION AND PLACEMENT OF ALL SLINGS AND LOAD HANDLING DEVICES.
- DIMENSIONS AND WEIGHTS SHOWN ARE FOR LARGEST CONFIGURATION AVAILABLE. WEIGHTS DO NOT INCLUDE BOOM EXTENSION AND / OR JIB, EXCEPT WHERE NOTED.
- RIGGING PERSONNEL SHALL VERIFY DIMENSIONS AS REQUIRED FOR CLEARANCE.
- EXTEND OUTRIGGER BEAMS 46 CM (18 IN) AND SLING AROUND BEAMS.
- DO NOT USE PINTLE HOOKS OR CWT LUGS FOR LIFTING OR TIE DOWN OF ENTIRE CRANE.