

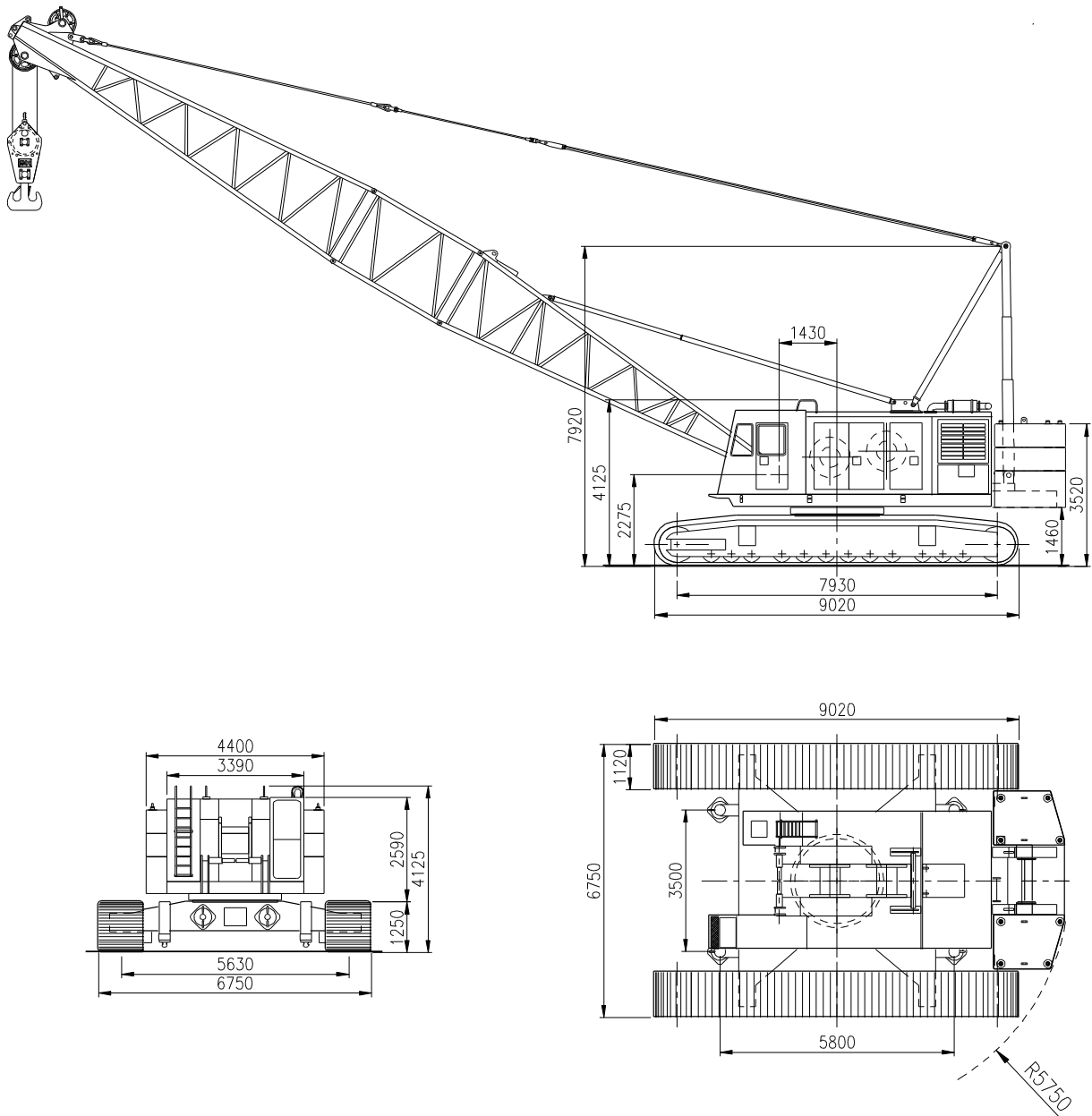


sarens
group

www.sarens.com

SUMITOMO SC 1500 HD

150 TON



nothing too heavy, nothing too high





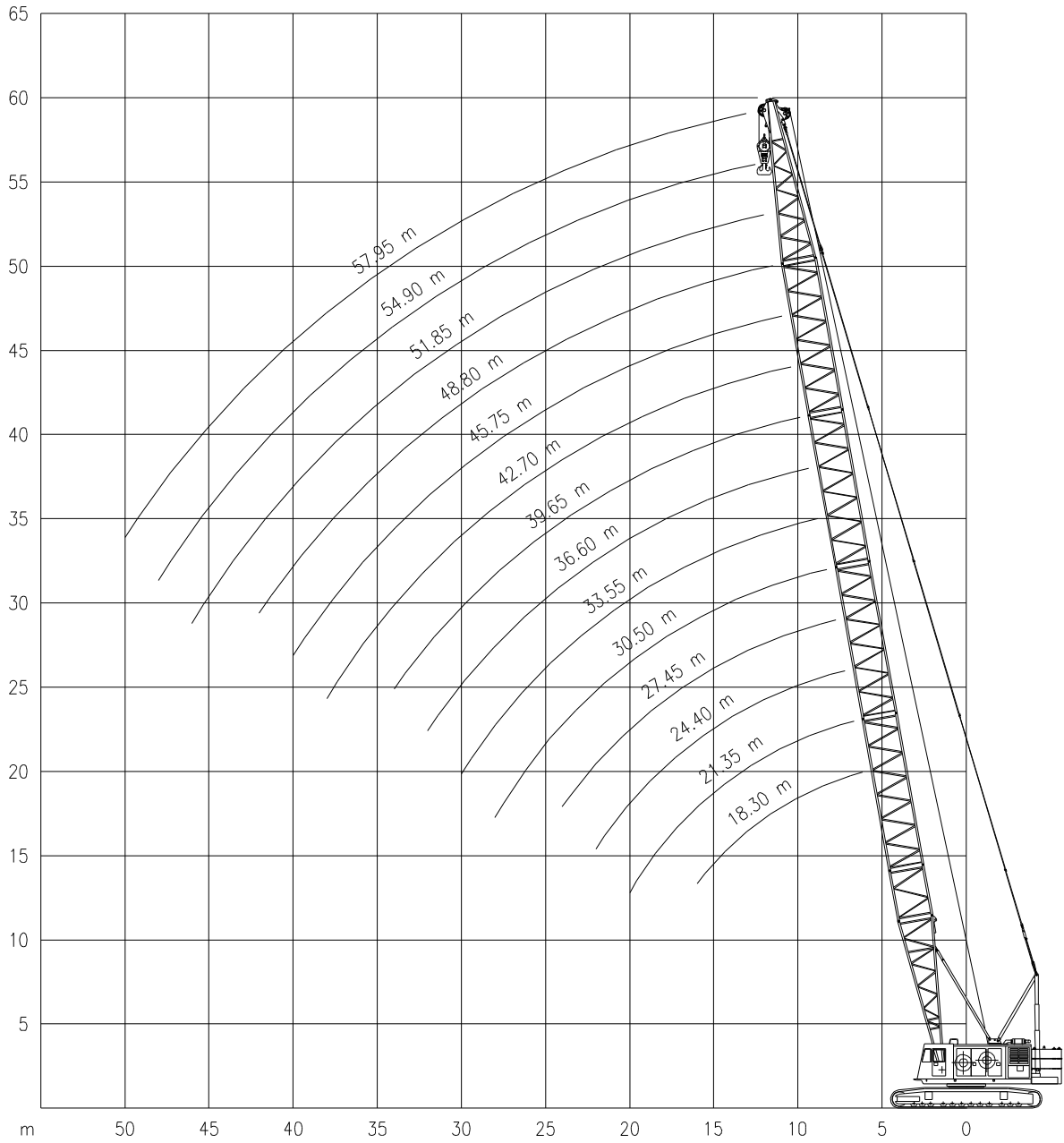
SUMITOMO SC 1500 HD

Working ranges
Portées

150 TON

Arbeitsbereiche
Werkbereich

MB



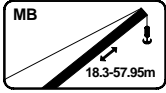


SUMITOMO SC 1500 HD

150 TON

Lifting capacities
Capacités

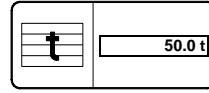
Tragfähigkeiten
Capaciteiten



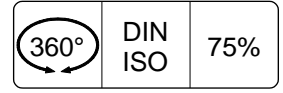
MB



5.63m



50.0t

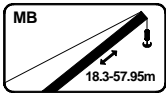


360°

DIN ISO

75%

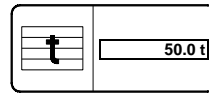
	18.30 m	21.35 m	24.40 m	27.45 m	30.50 m	33.55 m	36.60 m	39.65 m	42.70 m	45.75 m	48.80 m	51.85 m	54.90 m	57.95 m
	t	t	t	t	t	t	t	t	t	t	t	t	t	t
5.0	150.0	-	-	-	-	-	-	-	-	-	-	-	-	-
6.0	134.6	123.6	-	-	-	-	-	-	-	-	-	-	-	-
7.0	119.2	117.3	107.6	99.0	-	-	-	-	-	-	-	-	-	-
8.0	95.7	95.2	95.0	93.3	87.5	80.8	-	-	-	-	-	-	-	-
9.0	79.8	79.3	79.1	79.0	78.8	76.0	72.6	67.3	-	-	-	-	-	-
10.0	68.3	67.8	67.6	67.5	67.4	67.2	67.1	66.5	60.1	55.8	-	-	-	-
12.0	52.9	52.4	52.2	52.1	51.9	51.7	51.6	51.4	51.3	51.2	48.1	45.7	42.3	38.4
14.0	43.3	42.8	42.5	42.3	42.2	41.9	41.8	41.5	41.4	41.3	41.1	40.9	38.9	37.0
16.0	36.5	36.1	35.7	35.6	35.4	35.1	35.0	34.7	34.5	34.4	34.2	34.1	33.8	32.7
18.0	-	31.3	30.8	30.6	30.6	30.1	29.9	29.6	29.5	29.4	29.2	29.0	28.8	28.6
20.0	-	27.4	26.9	26.7	26.5	26.3	26.1	25.8	25.7	25.5	25.3	25.2	24.9	24.7
22.0	-	-	23.9	23.8	23.5	23.3	23.1	22.8	22.8	22.5	22.2	22.1	21.9	21.6
24.0	-	-	-	21.2	21.1	20.8	20.6	20.3	20.1	20.0	19.8	19.6	19.4	19.1
26.0	-	-	-	-	18.9	18.8	18.6	18.3	18.1	18.0	17.7	17.5	17.3	17.0
28.0	-	-	-	-	17.2	17.0	16.8	16.5	16.3	16.3	16.0	15.8	15.6	15.3
30.0	-	-	-	-	-	15.7	15.5	15.1	14.9	14.8	14.5	14.3	14.1	13.8
32.0	-	-	-	-	-	-	14.0	13.8	13.7	13.5	13.3	13.1	12.9	12.6
34.0	-	-	-	-	-	-	-	12.8	12.6	12.4	12.2	12.0	11.7	11.4
36.0	-	-	-	-	-	-	-	-	11.6	11.4	11.3	11.1	10.8	10.5
38.0	-	-	-	-	-	-	-	-	10.9	10.7	10.4	10.2	9.9	9.7
40.0	-	-	-	-	-	-	-	-	-	9.9	9.7	9.4	9.2	8.9
42.0	-	-	-	-	-	-	-	-	-	-	8.9	8.8	8.6	8.2
44.0	-	-	-	-	-	-	-	-	-	-	-	8.1	7.9	7.6
46.0	-	-	-	-	-	-	-	-	-	-	-	7.6	7.4	7.1
48.0	-	-	-	-	-	-	-	-	-	-	-	-	6.8	6.6
50.0	-	-	-	-	-	-	-	-	-	-	-	-	-	6.1



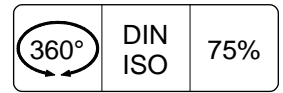
MB + RUNNER



5.63m



50.0t



360°

DIN ISO

75%

	18.30 m	21.35 m	24.40 m	27.45 m	30.50 m	33.55 m	36.60 m	39.65 m	42.70 m	45.75 m	48.80 m	51.85 m	54.90 m	57.95 m
	t	t	t	t	t	t	t	t	t	t	t	t	t	t
6.0	13/6.6	-	-	-	-	-	-	-	-	-	-	-	-	-
7.0	13.0	13/7.2	13/7.9	-	-	-	-	-	-	-	-	-	-	-
8.0	13.0	13.0	13.0	13/8.5	-	-	-	-	-	-	-	-	-	-
9.0	13.0	13.0	13.0	13.0	13/9.1	13/9.8	-	-	-	-	-	-	-	-
10.0	13.0	13.0	13.0	13.0	13.0	13.0	13/10.4	13/11	-	-	-	-	-	-
12.0	13.0	13.0	13.0	13.0	13.0	13.0	13.0	13.0	13/11.7	-	-	-	-	-
14.0	13.0	13.0	13.0	13.0	13.0	13.0	13.0	13.0	13.0	13/12.3	13/12.9	13/13.6	-	-
16.0	13.0	13.0	13.0	13.0	13.0	13.0	13.0	13.0	13.0	13.0	13.0	13.0	13/14.2	13/14.8
18.0	-	13.0	13.0	13.0	13.0	13.0	13.0	13.0	13.0	13.0	13.0	13.0	13.0	13.0
20.0	-	13.0	13.0	13.0	13.0	13.0	13.0	13.0	13.0	13.0	13.0	13.0	13.0	13.0
22.0	-	-	13.0	13.0	13.0	13.0	13.0	13.0	13.0	13.0	13.0	13.0	13.0	13.0
24.0	-	-	-	13.0	13.0	13.0	13.0	13.0	13.0	13.0	13.0	13.0	13.0	13.0
26.0	-	-	-	-	13.0	13.0	13.0	13.0	13.0	13.0	13.0	13.0	13.0	13.0
28.0	-	-	-	-	13.0	13.0	13.0	13.0	13.0	13.0	13.0	13.0	13.0	13.0
30.0	-	-	-	-	-	13.0	13.0	13.0	13.0	13.0	13.0	13.0	13.0	13.0
32.0	-	-	-	-	-	-	13.0	13.0	13.0	13.0	13.0	13.0	12.9	12.6
34.0	-	-	-	-	-	-	-	12.8	12.6	12.4	12.2	12.0	11.7	11.4
36.0	-	-	-	-	-	-	-	-	11.6	11.4	11.3	11.1	10.8	10.5
38.0	-	-	-	-	-	-	-	-	10.9	10.7	10.4	10.2	9.9	9.7
40.0	-	-	-	-	-	-	-	-	-	9.9	9.7	9.4	9.2	8.9
42.0	-	-	-	-	-	-	-	-	-	-	8.9	8.8	8.6	8.2
44.0	-	-	-	-	-	-	-	-	-	-	-	8.1	7.9	7.6
46.0	-	-	-	-	-	-	-	-	-	-	-	7.6	7.4	7.1
48.0	-	-	-	-	-	-	-	-	-	-	-	-	6.8	6.6
50.0	-	-	-	-	-	-	-	-	-	-	-	-	-	6.1



SUMITOMO SC 1500 HD

150 TON

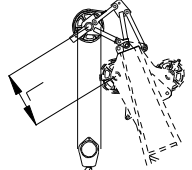
Working speeds
Vitesses de travail

Arbeitsgeschwindigkeiten
Werksnelheden

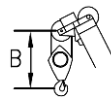
Mechanisms Mécanismes Antriebe Aandrijvingen	Speeds Vitesses Geschwindigkeiten Snelheden	Rope diameter Diamètre du câble Seildurchmesser Kabeldiameter	Single line pull Effort sur brin simple Zulässiger Seilzug je strang Toegelaten trekkraft / part	Length of ropes Longueur des cables Länge der Seile Kabellänge
Main hoist Levage sur flèche Hubwerk 1 Hijslier 1	Max 65 m/min	32 mm	43 kN	240 m
Auxiliary hoist Levage sur fléchette Hubwerk 2 Hijslier 2	Max 65 m/min	32 mm	43 kN	150 m
Hoist A-frame Relevage chevalet Einziehwerk Lier A-frame		20 mm		320 m
Slewing gear Orientation Drehwerk Zwenkwerk	1.2 – 0.9 RPM			
Travel speed Vitesse sur route Fahrgeschwindigkeit Rijsnelheid	0 – 0.5 kmh 0 – 1.0 km/h			

Runner
Chrochet rapide

Auslegerspitze
Giekneus

	Capacity Capacité Tragfähigkeit Capaciteit	Max. 13 t	L = 1264 mm
---	---	-----------	-------------

Hook Block / Crane hook
Crochet mouflé / Crochet simple



Unterflasche / Hakengehänge
Kraanblok / Kraanhaak

Capacity Capacité Tragfähigkeit Capaciteit	Number of sheaves Nombre de poulies Anzahl der Rollen Aantal schijven	Number of lines Nombre de brins Strangzahl Aantal parten	Weight Poids Gewicht Gewicht	“B”
SWL 150 t	6	12	2200 kg	3.5 m