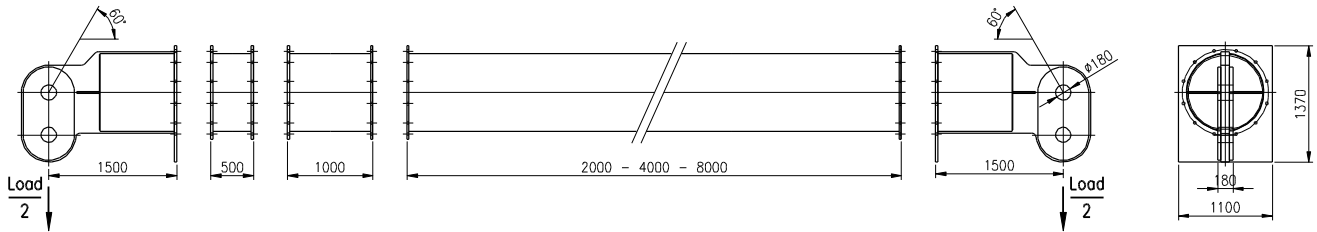




Spreader S914

MAX 692t



Length [m]	Weight [kg]	WLL ³ [t]
3.00	4880	692
3.50	5600	692
4.00	5880	692
4.50	6600	692
5.00	6420	692
5.50	7140	692
6.00	7420	692
6.50	8140	692
7.00	7520	692
7.50	8240	692
8.00	8520	692
8.50	9240	692
9.00	9060	692
9.50	9780	692
10.00	10060	692
10.50	10780	692
11.00	9710	692
11.50	10430	692
12.00	10710	692
12.50	11430	692
13.00	11250	692
13.50	11970	692
14.00	12250	692
14.50	12970	692
15.00	12350	692
15.50	13070	692
16.00	13350	692
16.50	14070	692
17.00	13890	692
17.50	14610	692

Length [m]	Weight [kg]	WLL ³ [t]
18.00	14890	692
18.50	15610	692
19.00	14540	692
19.50	15260	692
20.00	15540	692
20.50	16260	692
21.00	16080	692
21.50	16800	692
22.00	17080	692
22.50	17800	684
23.00	17180	684
23.50	17900	668
24.00	18180	656
24.50	18900	639
25.00	18720	633
25.50	19440	614
26.00	19720	601
26.50	20440	582
27.00	19820	582
27.50	20540	562
28.00	20820	549
28.50	21540	528
29.00	21360	522
29.50	22080	500
30.00	22360	486
30.50	23080	465

Length [m]	Weight [kg]
Head	2440
0.50	720
1.00	1000
2.00	1540
4.00	2640
8.00	4830

With angle of 60°	
Used shackle [t]	Max allowed capacity spreader [t]
Max 400	692
300	519
Min 250	433

Remark:

- When loaded asymmetrically, the spreader head can lift max 346T vertical on one side.
- A larger load can be lifted when the angle of the sling is more than 60°. Contact Sarens NV for a detailed calculation.
- WLL calculated for sling angle of 60°.

MATERIAL : S355 JO (Fe 510-C)
TYPE : SYSTEM 914 (Ø914mm)
THICKNESS : 20 mm

CONDITIONS FOR ASSEMBLING:

- 12 bolts M30 (min 8.8, min length 90mm);
- the bolts must be tightened in a star shaped pattern;
- tightening till contact, then a further 1/4 turn.

