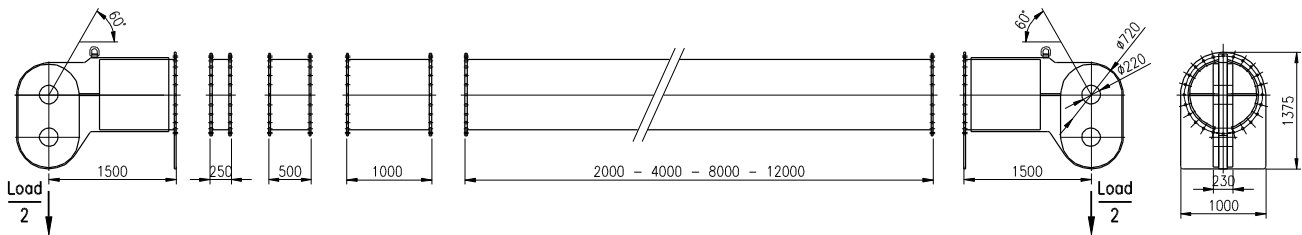




Spreader S830-2

MAX 1212t



Length [m]	Weight [kg]	WLL ³ [t]
3.00	5450	1212
3.25	5840	1212
3.50	5940	1212
3.75	6330	1212
4.00	6140	1212
4.25	6530	1212
4.50	6630	1212
4.75	7020	1212
5.00	6540	1212
5.25	6930	1212
5.50	7030	1212
5.75	7420	1212
6.00	7230	1212
6.25	7620	1212
6.50	7720	1212
6.75	8110	1212
7.00	7340	1212
7.25	7730	1212
7.50	7830	1212
7.75	8220	1212
8.00	8030	1212
8.25	8420	1212
8.50	8520	1212
8.75	8910	1212
9.00	8430	1212
9.25	8820	1212
9.50	8920	1212
9.75	9310	1212
10.00	9120	1212
10.25	9510	1212

Length [m]	Weight [kg]	WLL ³ [t]
10.50	9610	1212
10.75	10000	1212
11.00	8940	1212
11.25	9330	1212
11.50	9430	1212
11.75	9820	1212
12.00	9630	1212
12.25	10020	1212
12.50	10120	1212
12.75	10510	1212
13.00	10030	1212
13.25	10420	1212
13.50	10520	1212
13.75	10910	1212
14.00	10720	1212
14.25	11110	1212
14.50	11210	1212
14.75	11600	1212
15.00	10540	1212
15.25	10930	1212
15.50	11030	1212
15.75	11420	1212
16.00	11230	1212
16.25	11620	1212
16.50	11720	1212
16.75	12110	1212
17.00	11630	1212
17.25	12020	1212
17.50	12120	1212
17.75	12510	1212

Length [m]	Weight [kg]	WLL ³ [t]
18.00	12320	1212
18.25	12710	1202
18.50	12810	1193
18.75	13200	1179
19.00	12430	1183
19.25	12820	1169
19.50	12920	1160
19.75	13310	1145
20.00	13120	1140
20.25	13510	1125
20.50	13610	1114
20.75	14000	1098
21.00	13520	1097

Length [m]	Weight [kg]
Head	2725
0.25	390
0.50	490
1.00	690
2.00	1090
4.00	1890
8.00	3490
12.00	5090

With angle of 60°	
Used shackle [t]	Max allowed capacity spreader [t]
Max 700	1212
600	1039
Min 500	866

Remark:

- When loaded asymmetrically, the spreader head can lift max 606T vertical on one side.
- A larger load can be lifted when the angle of the sling is more than 60°. Contact Sarens NV for a detailed calculation.
- WLL calculated for sling angle of 60°.
- Only spreader sections with wall thickness of 20mm

S830-2 HEADS FIT S830 SECTIONS: MATERIAL
: S355 JO (Fe 510-C)
TYPE : SYSTEM 830 (Ø830mm)
THICKNESS : 20 mm

CONDITIONS FOR ASSEMBLING:

- 24 bolts M24 (min 10.9, min length 150mm);
- the bolts must be tightened in a star shaped pattern;
- tightening till contact, then a further 1/4 turn.

