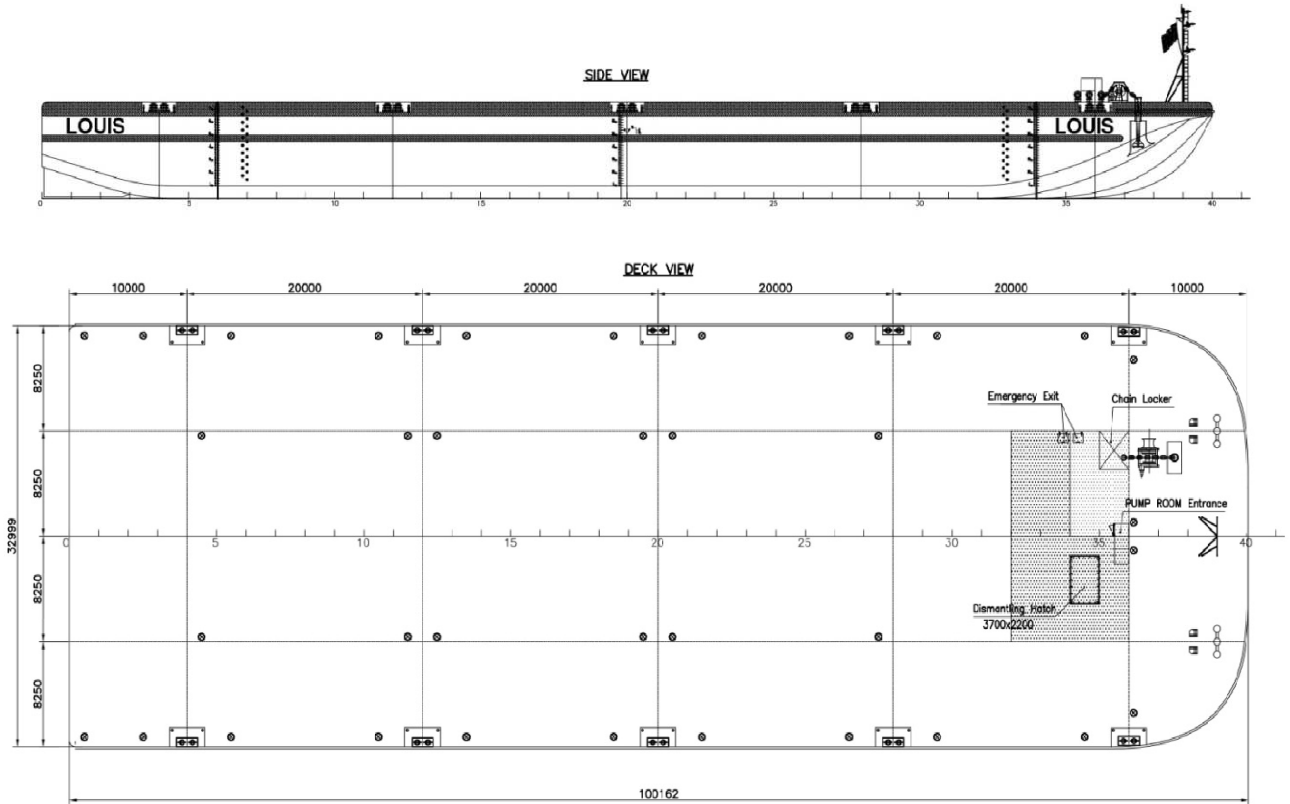




**sarens**  
group

# BARGE LOUIS



## Specifications

### Port of Registry

Ghent, Belgium

### Official number

0-6598

### Classification

Bureau Veritas

I  $\boxtimes$  Hull .mach pontoon no propulsion  
unrestricted navigation

### Built

Croatia 2011

### Dimensions

Length O.A. 100.00 m  
Beam MLD. 33.00 m  
Depth MLD. 7.60 m  
Summer draught 6.056 m  
Light ship weight 3238 t

### Available deck space

Length  $\pm$ 93.00 m  
Width 33.00 m  
Area  $\pm$ 3000 Sq m

### Cargo Deadweight

15492 tonnes

### Principal Capacities

Water ballast  
All Tanks 21616 m<sup>3</sup>  
Fuel oil tank 13.13 m<sup>3</sup>  
Oily water tank 10.14 m<sup>3</sup>

### Registered Tonnage

6690 tonnes Gross

### Towing Bridle

Stud link anchor chain U3 + steelwise rope,  
52 mm

- MBL 2110 kN
- Length 18 m

Delta plate

Standard triangle plate  
- DIN 82015 / NEN 3561  
- WLL 55 t  
- MBL 275 t

### Emergency Tow Line

Steel wire rope, 36 mm, 6x36WS + IWRC 1960N/mm<sup>2</sup>

- MBL 2100 kN
- Length 80 m

Pickup gear

### Anchor Winch

+ Anchor delta flipper 5 ton

### Deckload

Overall deck strength

### Frame spacings

2500 mm

### Tank Layout

3 Longitudinal bulkheads  
5 Transverse bulkheads

### Ballast Pumps

2 X 500m<sup>3</sup> / h

SARENS

Tel. : + 32 (0) 52 319 319

Fax. : + 32 (0) 52 319 329

Autweg, 10

B-1861 Wolvertem

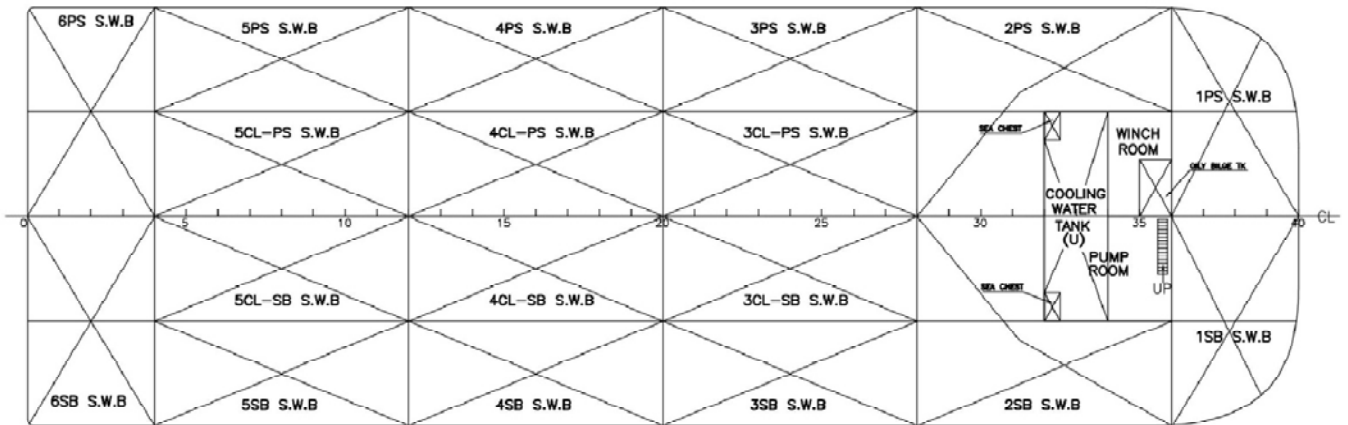
Belgium

[www.sarens.com](http://www.sarens.com)

nothing too heavy, nothing too high



**PLAN VIEW**



## Hydrostatics

Draft (m)	Displ't (t)	LCB (m)	TCB (m)	VCB (m)	WPA (m <sup>2</sup> )	LCF (m)	KML (m)	KMT (m)	WSA (m <sup>2</sup> )	TPC (t/cm)	MTC (t-m/cm)
0,5	1309,85	47,979	0,000	0,254	2610,19	47,887	1141,528	169,368	2658,50	26,75	149,49
1,0	2699,92	47,912	0,000	0,514	2802,56	47,793	645,585	93,964	2906,17	28,73	174,16
1,5	4163,88	47,837	0,000	0,775	2902,31	47,580	464,853	63,748	3107,68	29,75	193,24
2,0	5675,80	47,724	0,001	1,037	2992,05	47,246	373,826	48,826	3312,36	30,67	211,59
2,5	7235,72	47,594	0,002	1,300	3084,55	46,939	320,730	40,010	3506,47	31,62	231,13
3,0	8825,21	47,512	0,003	1,562	3115,04	47,328	271,187	33,725	3660,67	31,93	237,95
3,5	10429,35	47,511	0,004	1,823	3141,02	47,692	235,665	29,328	3813,18	32,20	243,88
4,0	12045,63	47,559	0,004	2,082	3163,42	48,030	208,875	26,101	3964,44	32,43	249,10
4,5	13672,81	47,634	0,005	2,341	3183,68	48,337	188,035	23,658	4114,89	32,63	253,90
5,0	15309,97	47,725	0,005	2,599	3202,51	48,623	171,408	21,760	4265,09	32,83	258,45
5,5	16956,44	47,825	0,005	2,857	3220,02	48,890	157,816	20,254	4415,13	33,01	262,75
6,0	18611,64	47,931	0,005	3,115	3236,69	49,145	146,537	19,041	4565,47	33,18	266,93
6,5	20276,68	48,045	0,005	3,373	3255,49	49,428	137,289	18,052	4716,97	33,37	271,54

SARENS Tel. : + 32 (0) 52 319 319  
Fax. : + 32 (0) 52 319 329

Autoweg, 10

B-1861 Wolvenstem

Belgium

[www.sarens.com](http://www.sarens.com)