

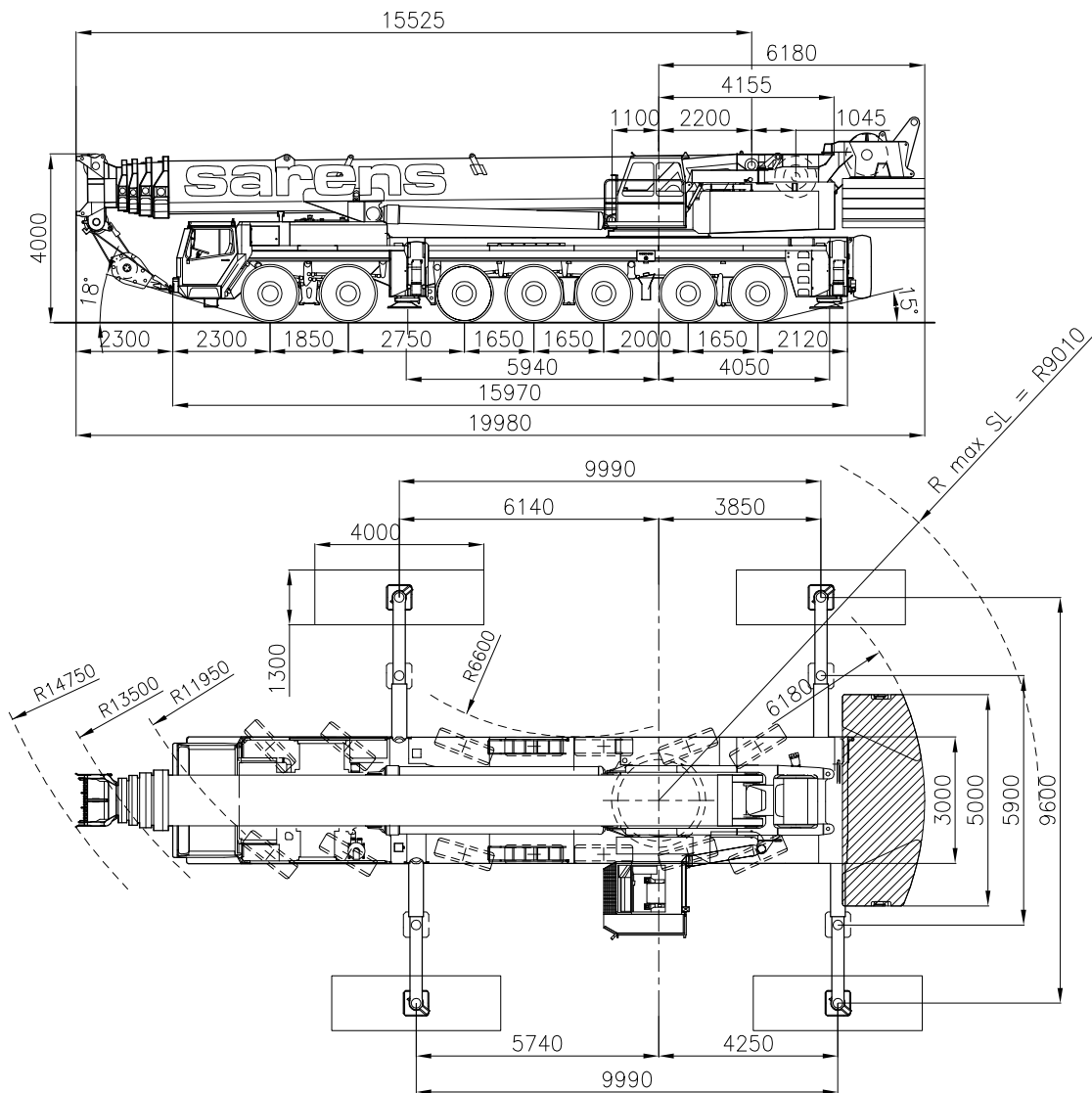


sarens
group

www.sarens.com

LIEBHERR LTM 1300

300 TON



Axle load / Charge par essieu / Achslast / Aslast	: 7 x 12 t	(= 0 t)
Total weight / Poids total / Gesamtgewicht / Totaal gewicht	: 84 t	(= 0 t)
Tyres / Pneus / Bereifung / Banden	: 14.00 R 25	
Counterweight-trailer / Remorque de contrepoids / Gegengewicht Anhänger / Ballastwagen	: 39 t	

nothing too heavy, nothing too high





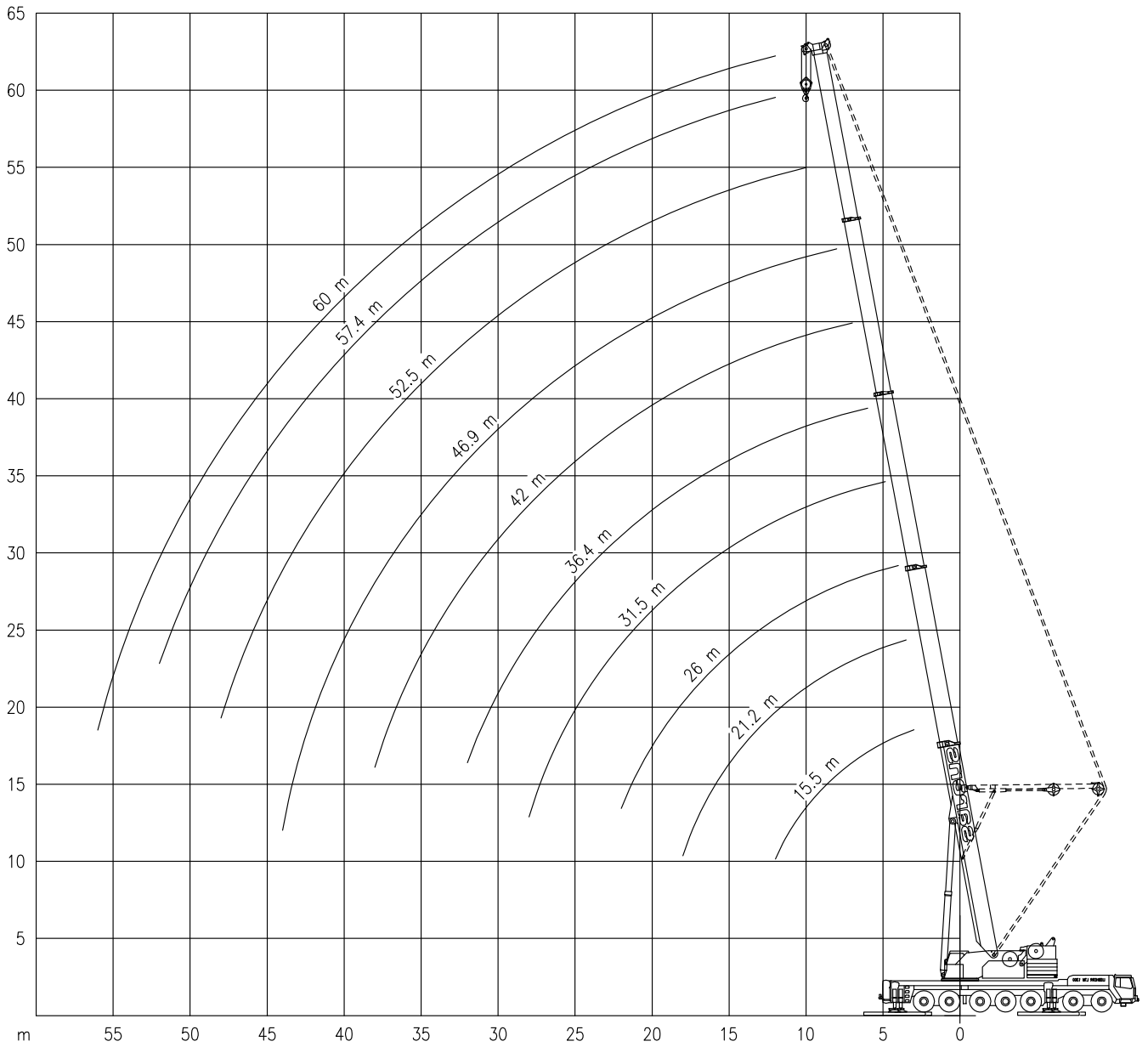
LIEBHERR LTM 1300

Working ranges
Portées

300 TON

Arbeitsbereiche
Werkbereich

T + TA



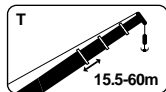


LIEBHERR LTM 1300

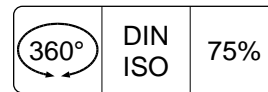
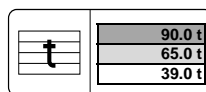
300 TON

Lifting capacities
Capacités

Tragfähigkeiten
Capaciteiten



T



	15.5 m	15.5 m	21.2 m	21.2 m	26.0 m	31.5 m	36.4 m	42.0 m	46.9 m	52.5 m	57.4 m	60.0 m
m	t	t	t	t	t	t	t	t	t	t	t	t
3.0	200.0*	200.0	-	-	-	-	-	-	-	-	-	-
3.5	200.0*	200.0	200.0*	200.0	-	-	-	-	-	-	-	-
4.0	200.0*	200.0	200.0*	200.0	165.0	-	-	-	-	-	-	-
4.5	200.0*	198.0	184.0*	184.0	158.0	125.0	-	-	-	-	-	-
5.0	190.0*	185.0	168.0*	168.0	150.0	120.0	-	-	-	-	-	-
6.0	168.0*	164.0	156.0*	156.0	136.0	111.0	93.0	-	-	-	-	-
7.0	149.0*	146.0	146.0*	143.0	123.0	103.0	87.0	74.0	-	-	-	-
8.0	133.0*	131.0	130.0*	128.0	113.0	95.0	81.0	69.0	59.0	-	-	-
9.0	120.0*	119.0	117.0*	116.0	104.0	88.0	75.0	66.0	56.0	-	-	-
10.0	109.0*	108.0	106.0*	106.0	96.0	82.0	70.0	62.0	53.0	45.0	-	-
12.0	88.0*	88.0	86.0*	86.0	82.0	71.0	62.0	55.0	48.0	41.5	35.0	33.0
14.0	-	-	72.0*	72.0	71.0	62.0	55.0	49.5	43.5	38.0	32.5	31.0
16.0	-	-	61.0*	61.0	60.0	54.0	49.0	44.5	39.5	35.0	30.5	28.8
18.0	-	-	52.0*	52.0	52.0	48.5	43.5	40.0	36.0	32.0	28.5	26.6
20.0	-	-	-	-	44.5	43.5	39.0	36.5	33.0	29.5	26.6	24.7
22.0	-	-	-	-	39.0	40.0	35.5	33.5	30.0	27.2	24.9	22.9
24.0	-	-	-	-	-	35.0	32.5	30.5	28.0	25.2	23.2	21.3
26.0	-	-	-	-	-	31.0	29.6	28.0	26.0	23.5	21.6	19.9
28.0	-	-	-	-	-	27.8	27.3	25.8	24.0	22.0	20.2	18.7
30.0	-	-	-	-	-	-	25.4	23.8	22.4	20.6	18.9	17.5
32.0	-	-	-	-	-	-	22.9	22.1	20.7	19.2	17.7	16.5
34.0	-	-	-	-	-	-	-	20.7	19.2	18.1	16.7	15.6
36.0	-	-	-	-	-	-	-	19.5	18.0	17.1	15.8	14.7
38.0	-	-	-	-	-	-	-	17.8	16.9	16.1	14.9	13.9
40.0	-	-	-	-	-	-	-	-	16.0	15.2	14.1	13.1
44.0	-	-	-	-	-	-	-	-	13.5	13.5	12.7	11.5
48.0	-	-	-	-	-	-	-	-	-	12.3	11.5	10.3
52.0	-	-	-	-	-	-	-	-	-	-	10.5	9.1
56.0	-	-	-	-	-	-	-	-	-	-	-	8.1

	15.5 m	15.5 m	21.2 m	21.2 m	26.0 m	31.5 m	36.4 m	42.0 m	46.9 m	52.5 m	57.4 m	60.0 m
m	t	t	t	t	t	t	t	t	t	t	t	t
3.0	200.0*	200.0	-	-	-	-	-	-	-	-	-	-
3.5	200.0*	200.0	200.0*	200.0	-	-	-	-	-	-	-	-
4.0	200.0*	200.0	200.0*	200.0	165.0	-	-	-	-	-	-	-
4.5	196.0*	198.0	184.0*	184.0	158.0	125.0	-	-	-	-	-	-
5.0	184.0*	185.0	168.0*	168.0	150.0	120.0	-	-	-	-	-	-
6.0	160.0*	164.0	156.0*	154.0	136.0	111.0	93.0	-	-	-	-	-
7.0	141.0*	146.0	138.0*	137.0	123.0	103.0	87.0	74.0	-	-	-	-
8.0	126.0*	131.0	123.0*	122.0	113.0	95.0	81.0	69.0	59.0	-	-	-
9.0	110.0*	119.0	109.0*	109.0	104.0	88.0	75.0	66.0	56.0	-	-	-
10.0	98.0*	108.0	96.0*	96.0	96.0	82.0	70.0	62.0	53.0	45.0	-	-
12.0	78.0*	88.0	77.0*	77.0	76.0	71.0	62.0	55.0	48.0	41.5	35.0	33.0
14.0	-	-	63.0*	63.0	62.0	62.0	55.0	49.5	43.5	38.0	32.5	31.0
16.0	-	-	53.0*	53.0	52.0	53.0	49.0	44.5	39.5	35.0	30.5	28.8
18.0	-	-	44.5*	44.5	43.5	44.5	43.5	40.0	36.0	32.0	28.5	26.6
20.0	-	-	-	-	36.5	37.5	38.5	36.5	33.0	29.5	26.6	24.7
22.0	-	-	-	-	31.0	32.0	32.5	33.5	30.0	27.2	24.9	22.9
24.0	-	-	-	-	-	27.6	28.2	29.3	28.0	25.2	23.2	21.3
26.0	-	-	-	-	-	24.0	24.6	25.6	26.0	23.5	21.6	19.9
28.0	-	-	-	-	-	21.0	21.6	22.6	23.3	22.0	20.2	18.7
30.0	-	-	-	-	-	-	19.0	20.0	20.7	20.6	18.9	17.5
32.0	-	-	-	-	-	-	16.8	17.8	18.5	19.2	17.7	16.5
34.0	-	-	-	-	-	-	-	15.8	16.5	17.5	16.7	15.6
36.0	-	-	-	-	-	-	-	14.1	14.8	15.8	15.8	14.7
38.0	-	-	-	-	-	-	-	12.6	13.3	14.3	14.9	13.9
40.0	-	-	-	-	-	-	-	-	12.6	12.9	13.7	13.1
44.0	-	-	-	-	-	-	-	-	11.4	10.6	11.3	11.3
48.0	-	-	-	-	-	-	-	-	-	8.7	9.4	9.4
52.0	-	-	-	-	-	-	-	-	-	-	7.8	7.8
56.0	-	-	-	-	-	-	-	-	-	-	-	6.5

*Over rear / En arrière / Nach hinten / Over achterzijde.

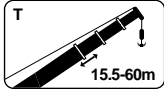


LIEBHERR LTM 1300

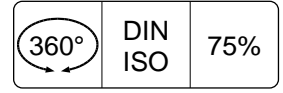
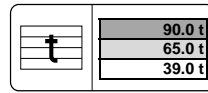
300 TON

Lifting capacities
Capacités

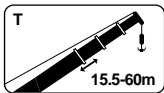
Tragfähigkeiten
Capacités



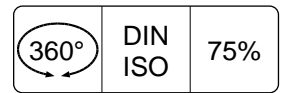
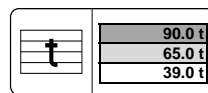
T



	15.5 m	21.2 m	26.0 m	31.5 m	36.4 m	42.0 m	46.9 m	52.5 m	57.4 m	60.0 m
m	t	t	t	t	t	t	t	t	t	t
3.0	200.0	-	-	-	-	-	-	-	-	-
3.5	200.0	200.0	-	-	-	-	-	-	-	-
4.0	199.0	195.0	165.0	-	-	-	-	-	-	-
4.5	184.0	180.0	158.0	125.0	-	-	-	-	-	-
5.0	171.0	167.0	150.0	120.0	-	-	-	-	-	-
6.0	150.0	146.0	136.0	111.0	93.0	-	-	-	-	-
7.0	130.0	126.0	123.0	103.0	87.0	74.0	-	-	-	-
8.0	111.0	109.0	108.0	95.0	81.0	69.0	59.0	-	-	-
9.0	96.0	94.0	93.0	88.0	75.0	66.0	56.0	-	-	-
10.0	84.0	82.0	80.0	76.0	70.0	62.0	53.0	45.0	-	-
12.0	66.0	64.0	61.0	59.0	57.0	55.0	48.0	41.5	35.0	33.0
14.0	-	48.5	48.0	49.0	46.5	45.5	43.5	38.0	32.5	31.0
16.0	-	38.5	37.5	42.0	38.0	38.0	37.5	35.0	30.5	28.8
18.0	-	31.0	30.5	34.5	32.0	32.0	32.0	32.0	28.5	26.6
20.0	-	-	24.9	28.8	26.8	27.2	27.2	27.7	26.6	24.7
22.0	-	-	20.6	24.4	22.4	23.3	23.4	24.0	24.1	22.9
24.0	-	-	-	20.9	19.4	20.0	21.2	21.0	21.1	20.7
26.0	-	-	-	18.0	18.1	17.1	19.6	18.4	18.6	18.2
28.0	-	-	-	15.5	16.9	14.5	18.2	16.2	16.4	16.1
30.0	-	-	-	-	15.7	12.3	16.2	14.3	14.6	14.3
32.0	-	-	-	-	14.6	10.5	14.4	12.5	13.0	12.8
34.0	-	-	-	-	-	8.9	12.9	10.8	11.6	11.4
36.0	-	-	-	-	-	7.6	11.5	9.4	10.2	10.1
38.0	-	-	-	-	-	6.4	10.2	8.2	9.0	8.9
40.0	-	-	-	-	-	-	9.1	7.1	7.9	7.8
44.0	-	-	-	-	-	-	7.4	5.3	6.1	6.0
48.0	-	-	-	-	-	-	-	3.9	4.6	4.6
52.0	-	-	-	-	-	-	-	-	3.4	3.4
56.0	-	-	-	-	-	-	-	-	-	2.4



T Telescoping



	15.5 m - 23.9 m	23.9 m - 26.0 m	26.0 m - 34.3 m	34.3 m - 36.4 m	36.4 m - 44.8 m	44.8 m - 46.9 m	46.9 m - 55.2 m	55.2 m - 57.4 m	57.4 m - 60.0 m
m	t	t	t	t	t	t	t	t	t
3.5	54.0	38.0	-	-	-	-	-	-	-
4.0	50.0	36.0	-	-	-	-	-	-	-
4.5	46.5	34.0	-	-	-	-	-	-	-
5.0	43.0	32.5	54.0	38.0	-	-	-	-	-
6.0	38.0	29.4	50.0	35.0	-	-	-	-	-
7.0	33.5	26.5	46.5	32.0	47.0	42.0	-	-	-
8.0	30.0	24.0	43.0	29.6	44.0	39.5	-	-	-
9.0	27.3	21.7	40.0	27.2	41.5	38.0	39.0	-	-
10.0	25.2	19.8	37.0	25.0	39.0	36.0	37.5	-	-
12.0	22.1	16.5	32.0	21.2	35.0	32.5	34.5	31.0	24.8
14.0	20.0	14.0	27.3	18.1	32.0	29.3	32.0	27.7	22.6
16.0	18.2	12.2	23.6	15.6	29.0	26.5	29.7	25.7	20.6
18.0	16.6	10.9	20.5	13.6	26.6	24.1	27.5	24.0	18.1
20.0	15.0	10.0	18.0	12.0	24.5	21.9	25.5	22.4	16.8
22.0	-	9.3	16.0	10.8	22.7	20.1	23.7	21.1	15.5
24.0	-	-	14.5	9.9	21.0	18.5	22.0	18.9	14.4
26.0	-	-	13.3	9.2	19.5	17.1	20.6	17.9	13.4
28.0	-	-	12.5	8.6	18.0	15.9	19.2	17.0	12.6
30.0	-	-	12.0	8.0	16.7	14.9	18.0	16.1	11.8
32.0	-	-	11.7	7.4	15.5	14.0	16.9	15.4	11.0
34.0	-	-	-	6.6	14.4	13.2	15.9	14.7	10.4
36.0	-	-	-	-	13.5	12.4	15.0	14.0	9.0
38.0	-	-	-	-	12.9	11.7	13.6	13.4	8.5
40.0	-	-	-	-	12.5	11.0	12.4	12.2	8.1
44.0	-	-	-	-	-	9.4	10.5	10.2	6.2
48.0	-	-	-	-	-	-	8.8	8.6	4.5
52.0	-	-	-	-	-	-	7.5	6.7	3.1
56.0	-	-	-	-	-	-	-	-	1.8

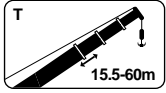


LIEBHERR LTM 1300

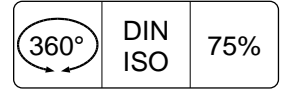
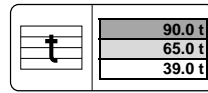
300 TON

Lifting capacities
Capacités

Tragfähigkeiten
Capacités



TA



	26.0 m	31.5 m	36.4 m	42.0 m	46.9 m	52.5 m	57.4 m	60.0 m
m	t	t	t	t	t	t	t	t
4.0	165.0	-	-	-	-	-	-	-
4.5	165.0	112.0	-	-	-	-	-	-
5.0	156.0	112.0	-	-	-	-	-	-
6.0	142.0	111.0	90.0	-	-	-	-	-
7.0	132.0	110.0	90.0	67.0	-	-	-	-
8.0	124.0	109.0	90.0	67.0	55.0	-	-	-
9.0	114.0	102.0	87.0	67.0	55.0	-	-	-
10.0	104.0	95.0	83.0	67.0	55.0	34.0	-	-
12.0	86.0	83.0	73.0	64.0	55.0	34.0	26.4	24.0
14.0	72.0	72.0	66.0	58.0	50.0	34.0	26.4	24.0
16.0	60.0	61.0	59.0	53.0	46.5	34.0	26.4	24.0
18.0	51.0	52.0	53.0	48.5	43.0	34.0	26.4	24.0
20.0	43.5	45.0	46.0	44.5	39.5	34.0	26.4	24.0
22.0	37.5	39.0	40.0	40.5	36.5	32.5	26.4	24.0
24.0	-	34.0	35.0	36.5	34.0	30.5	26.4	24.0
26.0	-	30.0	31.0	32.0	31.5	28.6	25.4	24.0
28.0	-	26.6	27.4	28.7	29.5	26.8	24.0	22.9
30.0	-	-	24.4	25.6	26.5	25.3	22.9	21.6
32.0	-	-	21.8	23.0	23.8	23.7	21.6	20.4
34.0	-	-	-	20.7	21.5	22.4	20.5	19.3
36.0	-	-	-	18.7	19.4	20.6	19.4	18.4
38.0	-	-	-	16.9	17.6	18.8	18.4	17.4
40.0	-	-	-	-	16.7	17.1	17.6	16.6
44.0	-	-	-	-	15.3	14.3	15.1	15.1
48.0	-	-	-	-	-	12.0	12.7	12.8
52.0	-	-	-	-	-	-	10.8	10.8
56.0	-	-	-	-	-	-	-	9.1

	26.0 m	31.5 m	36.4 m	42.0 m	46.9 m	52.5 m	57.4 m	60.0 m
m	t	t	t	t	t	t	t	t
4.0	165.0	-	-	-	-	-	-	-
4.5	165.0	112.0	-	-	-	-	-	-
5.0	156.0	112.0	-	-	-	-	-	-
6.0	142.0	111.0	90.0	-	-	-	-	-
7.0	132.0	110.0	90.0	67.0	-	-	-	-
8.0	121.0	109.0	90.0	67.0	55.0	-	-	-
9.0	108.0	102.0	87.0	67.0	55.0	-	-	-
10.0	96.0	95.0	83.0	67.0	55.0	34.0	-	-
12.0	76.0	78.0	73.0	64.0	55.0	34.0	26.4	24.0
14.0	62.0	63.0	64.0	58.0	50.0	34.0	26.4	24.0
16.0	51.0	56.0	54.0	53.0	46.5	34.0	26.4	24.0
18.0	43.0	47.5	45.5	46.5	43.5	34.0	26.4	24.0
20.0	36.0	40.5	39.0	40.0	39.5	34.0	26.4	24.0
22.0	30.5	34.5	33.0	34.0	35.5	32.5	26.4	24.0
24.0	-	29.9	28.3	29.5	30.5	30.5	26.4	24.0
26.0	-	26.1	25.2	25.7	26.6	27.8	25.4	24.0
28.0	-	22.9	23.6	22.5	23.4	24.6	24.0	22.9
30.0	-	-	22.2	19.9	21.8	21.8	22.6	21.6
32.0	-	-	21.1	17.5	20.5	19.5	20.3	20.2
34.0	-	-	-	15.4	19.1	17.5	18.3	18.4
36.0	-	-	-	13.5	17.3	15.7	16.5	16.6
38.0	-	-	-	11.9	15.7	14.1	14.9	15.0
40.0	-	-	-	-	14.4	12.6	13.5	13.5
44.0	-	-	-	-	11.9	10.1	11.0	11.0
48.0	-	-	-	-	-	8.1	8.9	9.0
52.0	-	-	-	-	-	-	7.2	7.3
56.0	-	-	-	-	-	-	-	5.9



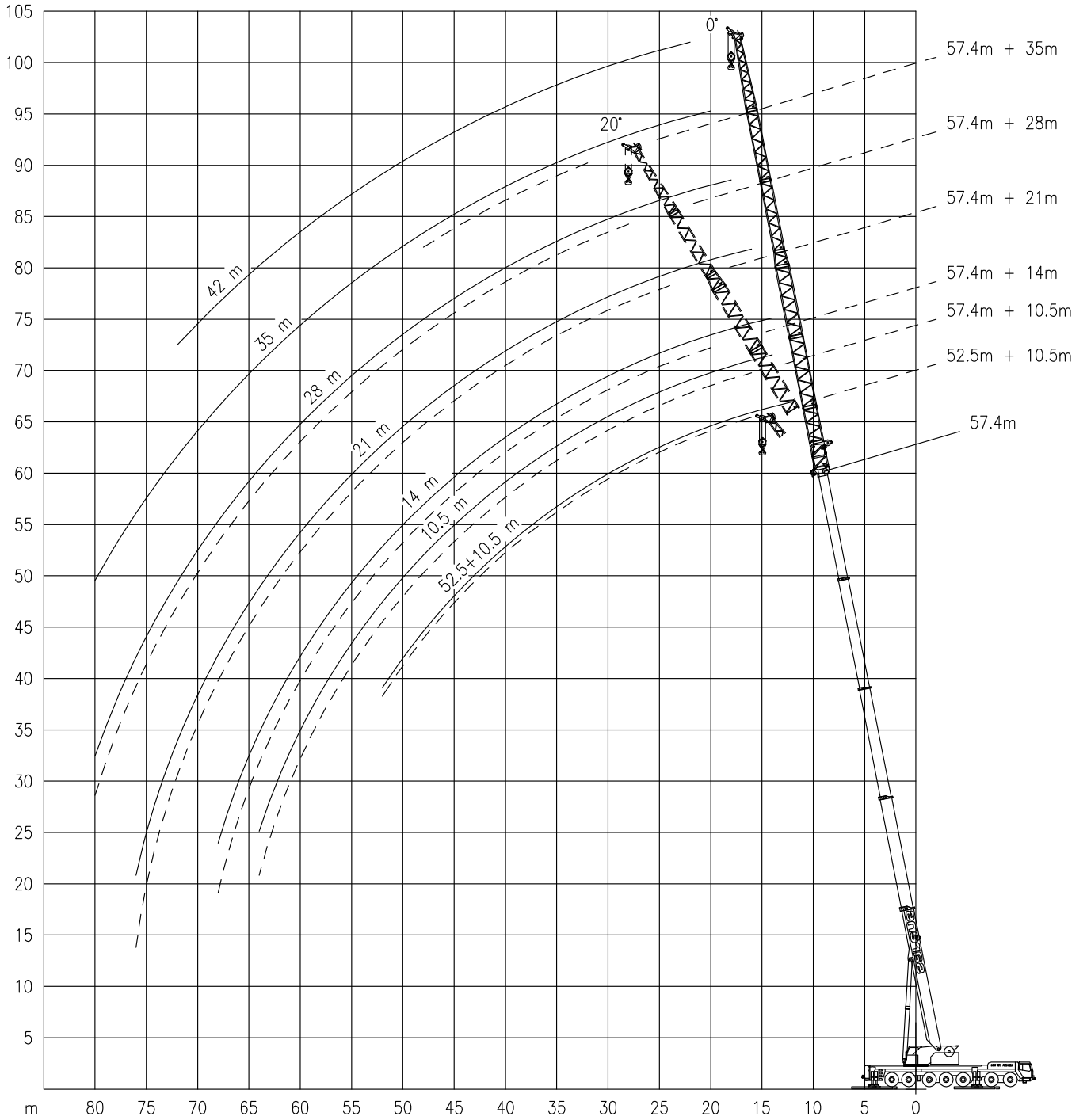
LIEBHERR LTM 1300

Working ranges
Portées

300 TON

Arbeitsbereiche
Werkbereich

TF + TAF



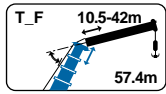


LIEBHERR LTM 1300

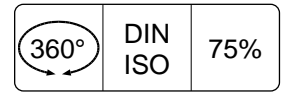
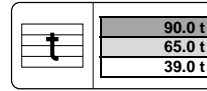
300 TON

Lifting capacities
Capacités

Tragfähigkeiten
Capacités



TF



		57.4 m						
		10.5 m	10.5 m	14.0 m	21.0 m	28.0 m	35.0 m	42.0m
		0°	0°	0°	0°	0°	0°	0°
m	t	t	t	t	t	t	t	t
12.0	25.2*	-	-	-	-	-	-	-
14.0	23.2*	19.7	17.4	-	-	-	-	-
16.0	21.8*	18.8	16.5	12.9	-	-	-	-
18.0	20.1*	17.8	15.7	12.2	9.7	-	-	-
20.0	18.9*	16.8	14.9	11.5	9.1	7.2	-	-
22.0	17.8*	16.0	14.1	10.9	8.7	6.8	5.2	-
24.0	16.9*	15.1	13.4	10.4	8.2	6.4	4.9	-
26.0	16.0*	14.2	12.7	9.8	7.8	6.0	4.5	-
28.0	15.2*	13.5	12.0	9.3	7.3	5.6	4.2	-
30.0	14.2*	12.8	11.3	8.8	6.9	5.3	3.9	-
32.0	13.6*	12.0	10.8	8.4	6.6	5.0	3.6	-
34.0	13.2*	11.4	10.3	7.9	6.2	4.7	3.4	-
36.0	12.4*	10.9	9.8	7.6	5.9	4.4	3.2	-
38.0	11.8*	10.4	9.3	7.2	5.6	4.1	3.1	-
40.0	11.3*	9.9	8.9	6.9	5.3	3.9	2.9	-
44.0	10.2*	9.0	8.1	6.2	4.8	3.5	2.6	-
48.0	8.4*	8.3	7.4	5.7	4.4	3.1	2.4	-
52.0	6.7*	7.2	6.8	5.2	3.9	2.9	2.1	-
56.0	5.4*	5.8	6.0	4.8	3.6	2.6	1.9	-
60.0	4.2*	4.6	4.8	4.4	3.4	2.4	1.7	-
64.0	-	3.6	3.8	3.9	3.1	2.2	1.6	-
68.0	-	-	2.9	3.1	3.0	2.1	1.4	-
72.0	-	-	-	2.3	2.6	1.9	1.3	-
76.0	-	-	-	1.7	1.9	1.8	-	-
80.0	-	-	-	-	1.3	1.4	-	-

		57.4 m						
		10.5 m	10.5 m	14.0 m	21.0 m	28.0 m	35.0 m	42.0m
		20°	20°	20°	20°	20°	20°	20°
m	t	t	t	t	t	t	t	t
12.0	-	-	-	-	-	-	-	-
14.0	-	-	-	-	-	-	-	-
16.0	17.0*	15.0	-	-	-	-	-	-
18.0	16.0*	15.0	-	-	-	-	-	-
20.0	15.2*	14.3	11.9	-	-	-	-	-
22.0	14.4*	13.7	11.3	-	-	-	-	-
24.0	13.7*	13.1	10.8	8.0	-	-	-	-
26.0	13.0*	12.5	10.3	7.5	-	-	-	-
28.0	12.4*	12.0	9.8	7.1	5.3	-	-	-
30.0	11.8*	11.4	9.4	6.8	5.0	-	-	-
32.0	11.3*	10.8	9.0	6.5	4.8	3.5	-	-
34.0	10.9*	10.3	8.6	6.2	4.5	3.3	-	-
36.0	10.5*	9.9	8.3	5.9	4.3	3.2	-	-
38.0	10.1*	9.5	8.0	5.6	4.1	3.0	-	-
40.0	9.8*	9.1	7.7	5.4	3.9	2.9	-	-
44.0	9.2*	8.4	7.2	5.0	3.6	2.6	-	-
48.0	8.6*	7.8	6.7	4.6	3.3	2.5	-	-
52.0	7.2*	7.2	6.3	4.4	3.1	-	-	-
56.0	5.7*	6.1	5.9	4.1	2.9	-	-	-
60.0	4.4*	4.9	5.1	3.9	2.7	-	-	-
64.0	-	3.8	4.0	3.7	2.6	-	-	-
68.0	-	-	3.0	3.5	2.5	-	-	-
72.0	-	-	-	2.7	2.4	-	-	-
76.0	-	-	-	1.8	2.3	-	-	-
80.0	-	-	-	-	1.9	-	-	-

*Main boom 52.5m / Flèche principale de 52.5m / Hauptausleger 52.5m / Hoofdgiek 52.5m
With 1.6m boom extension / Avec 1.6m extension de flèche / Mit 1.6m Auslegerverlängerung / Met 1.6m giekverlengstuk

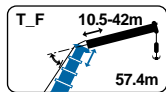


LIEBHERR LTM 1300

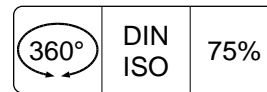
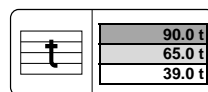
300 TON

Lifting capacities
Capacités

Tragfähigkeiten
Capacités



TF



		57.4 m						
		10.5 m	10.5 m	14.0 m	21.0 m	28.0 m	35.0 m	42.0m
		0°	0°	0°	0°	0°	0°	0°
m	t	t	t	t	t	t	t	t
12.0	25.2*	19.7	17.4	-	-	-	-	-
14.0	23.2*	19.7	17.4	-	-	-	-	-
16.0	21.8*	18.8	16.5	12.9	-	-	-	-
18.0	20.1*	17.8	15.7	12.2	9.7	-	-	-
20.0	18.9*	16.8	14.9	11.5	9.1	7.2	-	-
22.0	17.8*	16.0	14.1	10.9	8.7	6.8	5.2	-
24.0	16.9*	15.1	13.4	10.4	8.2	6.4	4.9	-
26.0	15.5*	14.2	12.7	9.8	7.8	6.0	4.5	-
28.0	13.6*	13.5	12.0	9.3	7.3	5.6	4.2	-
30.0	12.0*	12.0	11.3	8.8	6.9	6.3	3.9	-
32.0	10.6*	10.7	10.5	8.4	6.6	5.0	3.6	-
34.0	9.4*	9.5	9.4	7.9	6.2	4.7	3.4	-
36.0	8.2*	8.4	8.3	7.6	5.9	4.4	3.2	-
38.0	7.1*	7.4	7.4	7.2	5.6	4.1	3.1	-
40.0	6.1*	6.4	6.5	6.4	5.3	3.9	2.9	-
44.0	4.4*	4.7	4.8	4.8	4.8	3.5	2.8	-
48.0	3.1*	3.4	3.4	3.5	3.7	3.1	-	-
52.0	2.1*	2.4	2.4	2.5	2.7	2.6	-	-
54.0	-	-	-	-	2.3	2.2	-	-

		57.4 m						
		10.5 m	10.5 m	14.0 m	21.0 m	28.0 m	35.0 m	42.0m
		20°	20°	20°	20°	20°	20°	20°
m	t	t	t	t	t	t	t	t
16.0	17.0*	15.0	-	-	-	-	-	-
18.0	16.0*	15.0	-	-	-	-	-	-
20.0	15.2*	14.3	11.9	-	-	-	-	-
22.0	14.4*	13.7	11.3	-	-	-	-	-
24.0	13.7*	13.1	10.8	8.0	-	-	-	-
26.0	13.0*	12.5	10.3	7.5	-	-	-	-
28.0	12.4*	12.0	9.8	7.1	5.3	-	-	-
30.0	11.8*	11.4	9.4	6.8	5.0	-	-	-
32.0	11.3*	10.8	9.0	6.5	4.8	3.5	-	-
34.0	10.3*	10.2	8.6	6.2	4.5	3.3	-	-
36.0	9.1*	9.1	8.3	5.9	4.3	3.2	-	-
38.0	7.9*	8.1	8.0	5.6	4.1	3.0	-	-
40.0	6.9*	7.1	7.3	5.4	3.9	2.9	-	-
44.0	5.1*	5.3	5.5	5.0	3.6	2.6	-	-
48.0	3.6*	3.8	4.0	4.6	3.3	2.5	-	-
52.0	2.5*	2.7	2.9	3.3	3.1	-	-	-
56.0	-	-	2.0	2.4	2.8	-	-	-
58.0	-	-	-	-	2.3	-	-	-

*Main boom 52.5m / Flèche principale de 52.5m / Hauptausleger 52.5m / Hoofdgiek 52.5m
With 1.6m boom extension / Avec 1.6m extension de flèche / Mit 1.6m Auslegerverlängerung / Met 1.6m giekverlengstuk

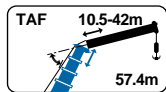


LIEBHERR LTM 1300

300 TON

Lifting capacities
Capacités

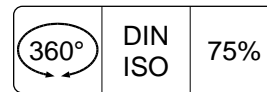
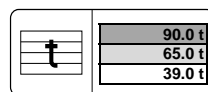
Tragfähigkeiten
Capacités



TAF



9.6m



		57.4 m						
		10.5 m	10.5 m	14.0 m	21.0 m	28.0 m	35.0 m	42.0m
		0°	0°	0°	0°	0°	0°	0°
m	t	t	t	t	t	t	t	t
12.0	20.8*	13.5	11.6	-	-	-	-	-
14.0	20.8*	13.5	11.6	-	-	-	-	-
16.0	20.8*	13.5	11.6	8.3	-	-	-	-
18.0	20.8*	13.5	11.6	8.3	6.5	-	-	-
20.0	20.7*	13.5	11.6	8.3	6.5	5.1	-	-
22.0	19.4*	13.5	11.6	8.3	6.5	5.1	-	-
24.0	18.4*	13.5	11.6	8.3	6.5	5.1	-	-
26.0	17.5*	13.5	11.6	8.3	6.5	5.1	-	-
28.0	16.6*	13.5	11.6	8.3	6.5	5.1	-	-
30.0	15.8*	13.5	11.6	8.3	6.5	5.1	-	-
32.0	15.1*	13.4	11.6	8.3	6.5	5.1	-	-
34.0	14.4*	12.9	11.2	8.3	6.5	5.1	-	-
36.0	13.7*	12.3	10.8	8.3	6.5	4.9	-	-
38.0	13.2*	11.7	10.4	8.0	6.2	4.7	-	-
40.0	12.7*	11.2	9.9	7.7	5.9	4.4	-	-
44.0	11.6*	10.4	9.1	7.1	5.4	4.0	-	-
48.0	10.9*	9.6	8.5	6.5	4.9	3.6	-	-
52.0	9.4*	8.8	7.8	6.0	4.5	3.3	-	-
56.0	7.9*	8.1	7.2	5.6	4.1	3.0	-	-
60.0	6.4*	6.9	6.7	5.2	3.7	2.8	-	-
64.0	-	5.6	5.7	4.9	3.5	2.6	-	-
68.0	-	-	4.5	4.5	3.3	2.4	-	-
72.0	-	-	-	3.6	3.1	2.2	-	-
76.0	-	-	-	2.9	3.0	2.1	-	-
80.0	-	-	-	-	2.6	2.0	-	-
84.0	-	-	-	-	2.0	1.8	-	-
88.0	-	-	-	-	-	1.5	-	-

		57.4 m						
		10.5 m	10.5 m	14.0 m	21.0 m	28.0 m	35.0 m	42.0m
		0°	0°	0°	0°	0°	0°	0°
m	t	t	t	t	t	t	t	t
12.0	20.8*	13.5	11.6	-	-	-	-	-
14.0	20.8*	13.5	11.6	-	-	-	-	-
16.0	20.8*	13.5	11.6	8.3	-	-	-	-
18.0	20.8*	13.5	11.6	8.3	6.5	-	-	-
20.0	20.7*	13.5	11.6	8.3	6.5	5.1	-	-
22.0	19.4*	13.5	11.6	8.3	6.5	5.1	-	-
24.0	18.4*	13.5	11.6	8.3	6.5	5.1	-	-
26.0	17.5*	13.5	11.6	8.3	6.5	5.1	-	-
28.0	16.6*	13.5	11.6	8.3	6.5	5.1	-	-
30.0	15.8*	13.5	11.6	8.3	6.5	5.1	-	-
32.0	15.1*	13.4	11.6	8.3	6.5	5.1	-	-
34.0	14.4*	12.9	11.2	8.3	6.5	5.1	-	-
36.0	13.7*	12.3	10.8	8.3	6.5	4.9	-	-
38.0	13.2*	11.7	10.4	8.0	6.2	4.7	-	-
40.0	12.7*	11.2	9.9	7.7	5.9	4.4	-	-
44.0	10.2*	10.4	9.1	7.1	5.4	4.0	-	-
48.0	8.1*	8.7	8.5	6.5	4.9	3.6	-	-
52.0	6.4*	7.0	7.2	6.0	4.5	3.3	-	-
56.0	5.0*	5.5	5.7	5.6	4.1	3.0	-	-
60.0	3.8*	4.3	4.9	4.7	3.7	2.8	-	-
64.0	-	3.2	3.3	3.5	3.5	2.6	-	-
68.0	-	-	2.4	2.7	3.0	2.4	-	-
72.0	-	-	-	1.9	2.3	2.2	-	-
76.0	-	-	-	1.2	1.6	1.7	-	-

*Main boom 52.5m / Flèche principale de 52.5m / Hauptausleger 52.5m / Hoofdgiek 52.5m
With 1.6m boom extension / Avec 1.6m extension de flèche / Mit 1.6m Auslegerverlängerung / Met 1.6m giekverlengstuk



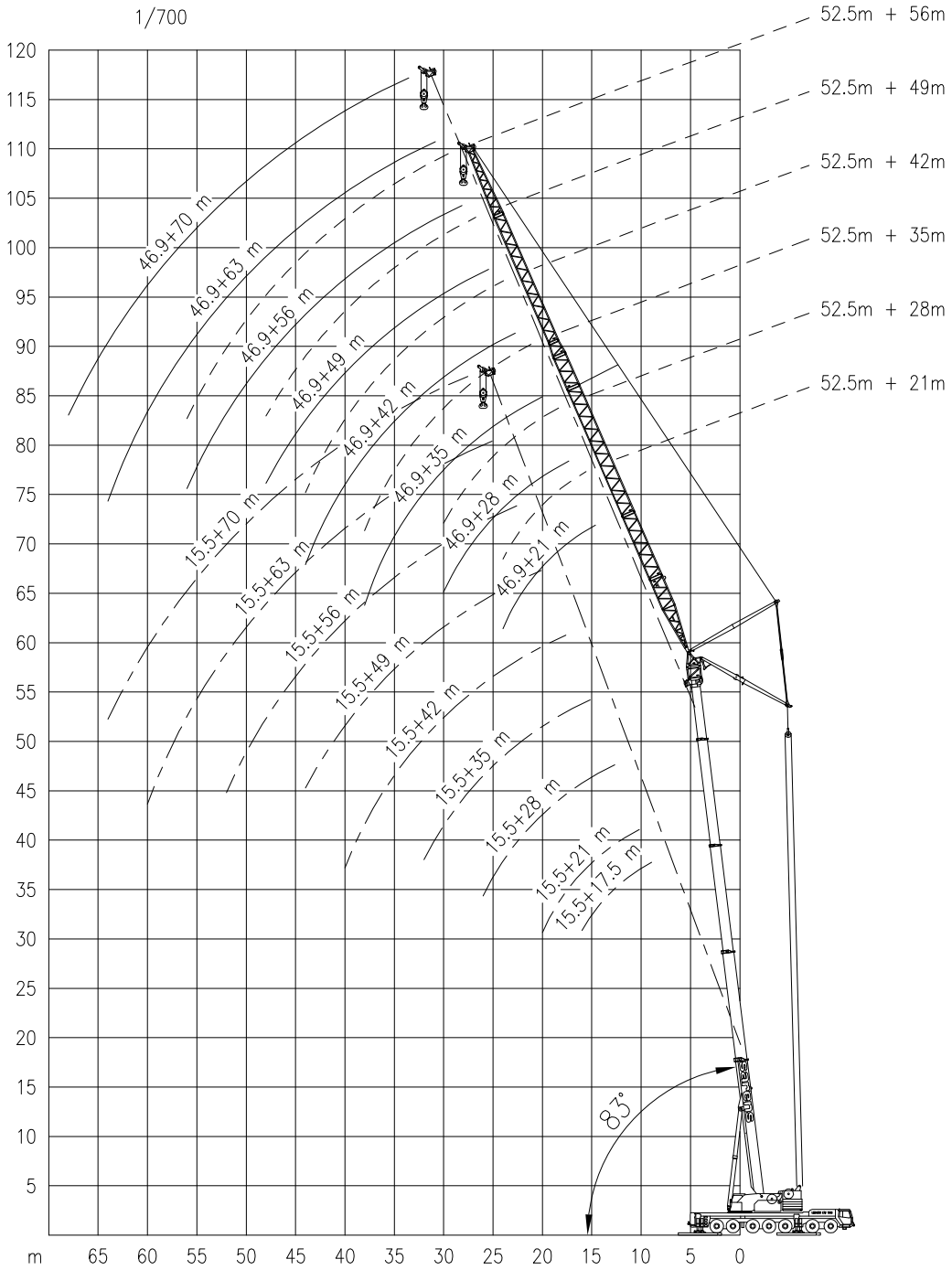
LIEBHERR LTM 1300

Working ranges
Portées

300 TON

Arbeitsbereiche
Werkbereich

TN 83°



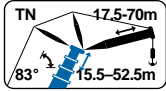


LIEBHERR LTM 1300

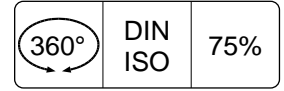
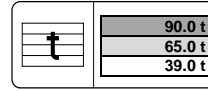
300 TON

Lifting capacities
Capacités

Tragfähigkeiten
Capacités



TN 83°



m	15.5 m									26.0 m								
	17.5 m	21.0 m	28.0 m	35.0 m	42.0 m	49.0 m	56.0 m	63.0 m	70.0 m	17.5 m	21.0 m	28.0 m	35.0 m	42.0 m	49.0 m	56.0 m	63.0 m	70.0 m
8.0	72.0	-	-	-	-	-	-	-	-	-	-	-	-	-	-	-	-	-
9.0	72.0	-	-	-	-	-	-	-	-	-	-	-	-	-	-	-	-	-
10.0	72.0	62.0	-	-	-	-	-	-	-	-	43.0	-	-	-	-	-	-	-
12.0	71.0	62.0	48.5	-	-	-	-	-	-	-	42.5	34.5	-	-	-	-	-	-
14.0	66.0	61.0	48.0	35.0	-	-	-	-	-	-	42.5	34.0	25.8	-	-	-	-	-
16.0	58.0	57.0	48.0	35.0	27.8	-	-	-	-	-	42.0	34.0	25.6	-	-	-	-	-
18.0	-	51.0	47.5	34.5	27.5	20.4	-	-	-	-	41.5	33.5	25.4	20.6	-	-	-	-
20.0	-	43.5	43.5	34.5	27.2	20.1	15.9	-	-	-	41.0	33.5	25.3	20.4	15.5	-	-	-
22.0	-	-	39.5	34.0	26.9	19.8	15.7	-	-	-	40.0	33.0	25.2	20.3	15.4	12.0	-	-
24.0	-	-	36.5	34.0	26.6	19.6	15.5	12.5	-	-	-	33.0	25.0	20.2	15.3	11.9	-	-
26.0	-	-	30.5	32.5	26.3	19.3	15.2	12.3	9.4	-	-	32.5	24.8	20.0	15.2	11.8	9.6	-
28.0	-	-	-	30.5	26.0	19.1	15.0	12.1	9.3	-	-	29.6	24.7	19.9	15.1	11.7	9.6	7.2
30.0	-	-	-	28.2	25.7	18.8	14.8	12.0	9.2	-	-	-	24.5	19.7	15.0	11.6	9.5	7.2
32.0	-	-	-	24.9	25.2	18.6	14.6	11.8	9.1	-	-	-	24.4	19.6	14.8	11.5	9.4	7.1
34.0	-	-	-	-	24.2	18.3	14.4	11.7	9.0	-	-	-	24.2	19.5	14.7	11.4	9.4	7.0
36.0	-	-	-	-	22.5	18.0	14.2	11.5	8.8	-	-	-	-	19.3	14.6	11.3	9.3	7.0
38.0	-	-	-	-	20.5	17.8	13.9	11.4	8.7	-	-	-	-	19.2	14.5	11.2	9.2	6.9
40.0	-	-	-	-	17.6	17.5	13.7	11.2	8.6	-	-	-	-	19.1	14.4	11.1	9.1	6.8
44.0	-	-	-	-	-	17.0	13.3	10.9	8.4	-	-	-	-	-	14.2	11.0	9.0	6.7
48.0	-	-	-	-	-	-	12.8	10.5	8.1	-	-	-	-	-	14.0	10.9	8.9	6.6
52.0	-	-	-	-	-	-	12.4	10.2	7.9	-	-	-	-	-	-	10.8	8.8	6.5
56.0	-	-	-	-	-	-	-	9.8	7.7	-	-	-	-	-	-	-	8.7	6.4
60.0	-	-	-	-	-	-	-	-	9.5	7.4	-	-	-	-	-	-	-	8.6
64.0	-	-	-	-	-	-	-	-	-	7.2	-	-	-	-	-	-	-	6.1
68.0	-	-	-	-	-	-	-	-	-	-	-	-	-	-	-	-	-	6.0
m	36.4 m									46.9 m								
	t	t	t	t	t	t	t	t	t	t	t	t	t	t	t	t	t	t
12.0	-	28.0	-	-	-	-	-	-	-	-	-	-	-	-	-	-	-	-
14.0	-	27.6	22.5	-	-	-	-	-	-	-	17.5	-	-	-	-	-	-	-
16.0	-	27.2	22.2	-	-	-	-	-	-	-	17.3	14.0	-	-	-	-	-	-
18.0	-	26.8	22.0	17.0	-	-	-	-	-	-	17.1	13.8	-	-	-	-	-	-
20.0	-	26.4	21.7	16.8	13.7	-	-	-	-	-	16.9	13.7	10.5	-	-	-	-	-
22.0	-	26.0	21.5	16.6	13.0	10.5	-	-	-	-	16.7	13.5	10.4	8.5	-	-	-	-
24.0	-	-	21.2	16.4	13.4	10.4	8.2	-	-	-	16.5	13.4	10.3	8.4	6.7	-	-	-
26.0	-	-	-	21.0	16.2	13.2	10.2	8.1	-	-	-	13.2	10.2	8.3	6.4	4.7	-	-
28.0	-	-	-	20.8	16.0	13.1	10.1	8.0	6.4	-	-	-	13.1	10.1	8.2	6.3	4.7	3.5
30.0	-	-	-	-	15.9	13.0	10.0	8.0	6.3	4.7	-	-	13.0	10.0	8.1	6.2	4.6	3.5
32.0	-	-	-	-	15.7	12.8	9.9	7.9	6.2	4.6	-	-	-	9.8	8.0	6.1	4.6	3.5
34.0	-	-	-	-	15.6	12.7	9.8	7.8	6.1	4.6	-	-	-	9.7	7.9	6.0	4.5	3.4
36.0	-	-	-	-	15.5	12.5	9.7	7.8	6.1	4.5	-	-	-	9.6	7.8	5.9	4.5	3.4
38.0	-	-	-	-	-	12.4	9.6	7.7	6.0	4.4	-	-	-	9.5	7.7	5.8	4.4	3.3
40.0	-	-	-	-	-	12.2	9.5	7.6	5.9	4.4	-	-	-	-	7.6	5.7	4.3	3.3
44.0	-	-	-	-	-	-	9.2	7.4	5.8	4.3	-	-	-	-	7.5	5.6	4.2	3.2
48.0	-	-	-	-	-	-	9.0	7.3	5.6	4.1	-	-	-	-	5.5	4.1	3.1	2.0
52.0	-	-	-	-	-	-	-	7.2	5.5	4.0	-	-	-	-	-	4.0	3.0	1.9
56.0	-	-	-	-	-	-	-	-	7.0	5.3	3.9	-	-	-	-	-	3.9	3.0
60.0	-	-	-	-	-	-	-	-	-	5.2	3.8	-	-	-	-	-	-	2.9
64.0	-	-	-	-	-	-	-	-	-	-	3.6	-	-	-	-	-	-	2.8
66.0	-	-	-	-	-	-	-	-	-	-	-	3.5	-	-	-	-	-	1.7
m	52.5 m																	
	t	t	t	t	t	t	t	t	t									
14.0	-	12.5	-	-	-	-	-	-	-									
16.0	-	12.4	9.7	-	-	-	-	-	-									
18.0	-	12.3	9.6	-	-	-	-	-	-									
20.0	-	12.2	9.6	7.0	-	-	-	-	-									
22.0	-	12.1	9.5	6.9	5.2	-	-	-	-									
24.0	-	12.0	9.4	6.9	5.1	3.5	-	-	-									
26.0	-	-	9.4	6.8	5.1	3.5	-	-	-									
28.0	-	-	9.3	6.8	5.0	3.4	2.3	-	-									
30.0	-	-	9.2	6.7	5.0	3.4	2.3	-	-									
32.0	-	-	-	6.7	4.9	3.3	2.2	-	-									
34.0	-	-	-	6.6	4.9	3.3	2.2	-	-									
36.0	-	-	-	6.5	4.8	3.2	2.2	-	-									
38.0	-	-	-	6.5	4.8	3.2	2.1	-	-									
40.0	-	-	-	-	4.7	3.1	2.1	-	-									
44.0	-	-	-	-	4.7	3.1	2.1	-	-									
48.0	-	-	-	-	-	3.0	2.0	-	-									
52.0	-	-	-	-	-	-	2.0	-	-									
56.0	-	-	-	-	-	-	-	2.0	-									

With 3.1m boom extension / Avec 3.1m extension de fleche / Mit 3.1m Auslegerverlängerung / Met 3.1m giekverlengstuk



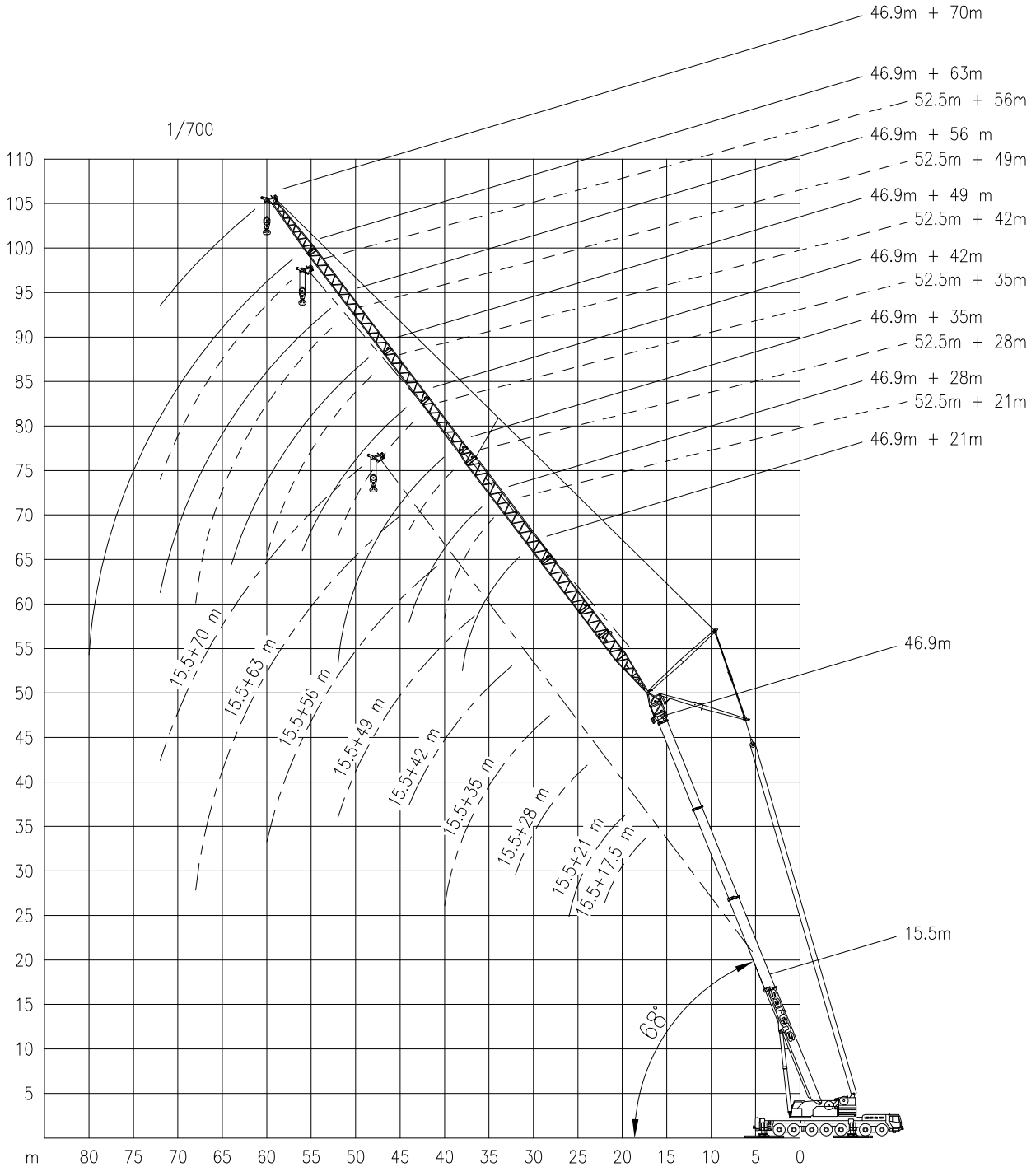
LIEBHERR LTM 1300

Working ranges
Portées

300 TON

Arbeitsbereiche
Werkbereich

TN 68°



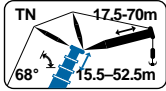


LIEBHERR LTM 1300

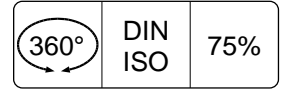
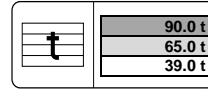
300 TON

Lifting capacities
Capacités

Tragfähigkeiten
Capacités



TN 68°



m	15.5 m									26.0 m								
	17.5 m	21.0 m	28.0 m	35.0 m	42.0 m	49.0 m	56.0 m	63.0 m	70.0 m	17.5 m	21.0 m	28.0 m	35.0 m	42.0 m	49.0 m	56.0 m	63.0 m	70.0 m
18.0	51.0	-	-	-	-	-	-	-	-	-	-	-	-	-	-	-	-	-
20.0	49.5	46.0	-	-	-	-	-	-	-	-	-	-	-	-	-	-	-	-
22.0	48.0	45.0	-	-	-	-	-	-	-	-	-	-	-	-	-	-	-	-
24.0	-	43.5	38.5	-	-	-	-	-	-	-	36.5	-	-	-	-	-	-	-
26.0	-	40.5	37.5	-	-	-	-	-	-	-	35.5	-	-	-	-	-	-	-
28.0	-	-	36.5	31.5	-	-	-	-	-	-	34.0	29.8	-	-	-	-	-	-
30.0	-	-	33.5	30.5	-	-	-	-	-	-	31.5	29.2	-	-	-	-	-	-
32.0	-	-	31.5	29.5	24.0	-	-	-	-	-	-	28.6	24.4	-	-	-	-	-
34.0	-	-	-	28.3	23.5	-	-	-	-	-	-	26.6	24.1	-	-	-	-	-
36.0	-	-	-	26.2	23.0	18.4	-	-	-	-	-	24.9	23.9	19.2	-	-	-	-
38.0	-	-	-	25.1	22.5	18.2	-	-	-	-	-	-	22.9	19.0	-	-	-	-
40.0	-	-	-	20.7	22.0	18.0	14.4	-	-	-	-	-	21.6	18.8	14.4	-	-	-
44.0	-	-	-	-	20.4	17.6	14.0	11.2	-	-	-	-	19.2	18.5	14.2	11.0	-	-
48.0	-	-	-	-	-	17.2	13.6	10.9	8.2	-	-	-	-	16.9	14.0	10.8	8.6	-
52.0	-	-	-	-	-	15.9	13.2	10.6	8.0	-	-	-	-	-	13.8	10.6	8.4	6.4
56.0	-	-	-	-	-	-	12.9	10.3	7.7	-	-	-	-	-	13.4	10.4	8.2	6.2
60.0	-	-	-	-	-	-	12.6	10.0	7.5	-	-	-	-	-	-	10.2	8.0	6.1
64.0	-	-	-	-	-	-	-	9.7	7.3	-	-	-	-	-	-	10.0	7.8	6.0
68.0	-	-	-	-	-	-	-	8.9	7.0	-	-	-	-	-	-	-	7.7	5.8
72.0	-	-	-	-	-	-	-	-	6.8	-	-	-	-	-	-	-	7.6	5.7
76.0	-	-	-	-	-	-	-	-	-	-	-	-	-	-	-	-	-	5.6
36.4 m									46.9 m									
m	t	t	t	t	t	t	t	t	t	t	t	t	t	t	t	t	t	t
28.0	-	22.0	-	-	-	-	-	-	-	-	-	-	-	-	-	-	-	-
30.0	-	21.3	-	-	-	-	-	-	-	-	-	-	-	-	-	-	-	-
32.0	-	20.6	18.5	-	-	-	-	-	-	-	12.0	-	-	-	-	-	-	-
34.0	-	20.0	18.0	-	-	-	-	-	-	-	11.8	-	-	-	-	-	-	-
36.0	-	-	17.5	15.7	-	-	-	-	-	-	11.5	9.7	-	-	-	-	-	-
38.0	-	-	17.0	15.4	-	-	-	-	-	-	11.2	9.6	-	-	-	-	-	-
40.0	-	-	16.5	15.1	12.4	-	-	-	-	-	-	9.4	8.0	-	-	-	-	-
44.0	-	-	-	14.4	12.0	9.6	-	-	-	-	-	9.0	7.7	6.4	-	-	-	-
48.0	-	-	-	13.8	11.5	9.4	7.5	-	-	-	-	-	7.4	6.0	5.0	-	-	-
52.0	-	-	-	-	11.0	9.1	7.3	5.8	-	-	-	-	7.0	5.8	4.7	3.4	-	-
56.0	-	-	-	-	-	8.9	7.2	5.6	-	-	-	-	-	5.4	4.4	3.2	2.3	-
60.0	-	-	-	-	-	8.6	7.0	5.5	3.9	-	-	-	-	-	4.1	3.0	2.1	1.3
64.0	-	-	-	-	-	-	6.9	5.4	3.8	-	-	-	-	-	3.9	2.8	2.0	1.2
68.0	-	-	-	-	-	-	6.8	5.2	3.9	-	-	-	-	-	-	2.6	1.8	1.1
72.0	-	-	-	-	-	-	-	5.1	3.6	-	-	-	-	-	-	2.4	1.7	1.0
76.0	-	-	-	-	-	-	-	-	5.0	3.5	-	-	-	-	-	-	1.6	-
80.0	-	-	-	-	-	-	-	-	-	3.4	-	-	-	-	-	-	1.4	-
52.5 m																		
m	t	t	t	t	t	t	t	t	t									
34.0	-	8.6	-	-	-	-	-	-	-									
36.0	-	8.3	-	-	-	-	-	-	-									
38.0	-	8.1	6.8	-	-	-	-	-	-									
40.0	-	8.0	6.6	-	-	-	-	-	-									
44.0	-	-	6.3	5.0	-	-	-	-	-									
48.0	-	-	-	4.8	3.7	-	-	-	-									
52.0	-	-	-	4.5	3.5	2.4	-	-	-									
56.0	-	-	-	-	3.3	2.3	1.5	-	-									
60.0	-	-	-	-	3.1	2.2	1.4	-	-									
64.0	-	-	-	-	-	2.1	1.4	-	-									
68.0	-	-	-	-	-	2.0	1.3	-	-									
72.0	-	-	-	-	-	-	1.2	-	-									

With 3.1m boom extension / Avec 3.1m extension de fleche / Mit 3.1m Auslegerverlängerung / Met 3.1m giekverlengstuk



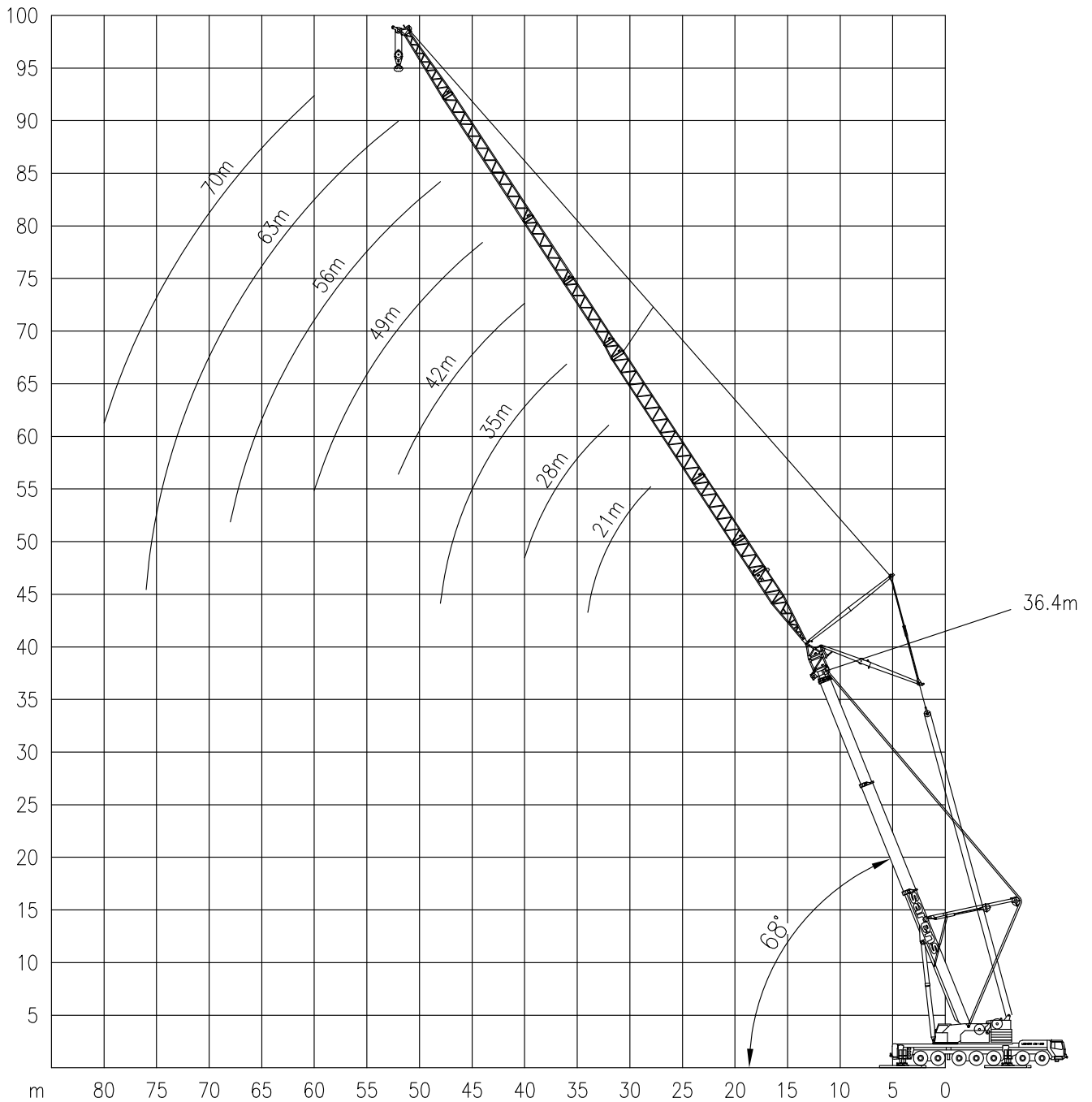
LIEBHERR LTM 1300

Working ranges
Portées

300 TON

Arbeitsbereiche
Werkbereich

TAN 68°



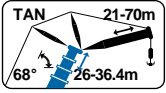


LIEBHERR LTM 1300

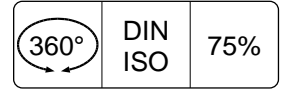
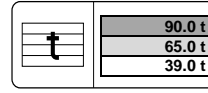
300 TON

Lifting capacities
Capacités

Tragfähigkeiten
Capacités



TAN 68°



m	26.0 m										36.4 m										
	17.5 m	21.0 m	28.0 m	35.0 m	42.0 m	49.0 m	56.0 m	63.0 m	70.0 m	70.0 m	17.5 m	21.0 m	28.0 m	35.0 m	42.0 m	49.0 m	56.0 m	63.0 m	70.0 m	70.0 m	
24.0	-	39.5	-	-	-	-	-	-	-	-	-	-	-	-	-	-	-	-	-	-	-
26.0	-	37.0	-	-	-	-	-	-	-	-	-	-	-	-	-	-	-	-	-	-	-
28.0	-	34.0	32.0	-	-	-	-	-	-	-	25.0	-	-	-	-	-	-	-	-	-	-
30.0	-	31.5	31.0	-	-	-	-	-	-	-	24.3	-	-	-	-	-	-	-	-	-	-
32.0	-	-	28.8	26.0	-	-	-	-	-	-	23.7	20.4	-	-	-	-	-	-	-	-	-
34.0	-	-	26.8	25.8	-	-	-	-	-	-	23.0	20.0	-	-	-	-	-	-	-	-	-
36.0	-	-	25.1	24.5	20.4	-	-	-	-	-	-	19.6	17.0	-	-	-	-	-	-	-	-
38.0	-	-	-	23.0	20.2	-	-	-	-	-	-	19.2	16.8	-	-	-	-	-	-	-	-
40.0	-	-	-	21.6	20.1	15.1	-	-	-	-	-	18.8	16.6	13.6	-	-	-	-	-	-	-
44.0	-	-	-	19.3	18.8	14.8	11.6	-	-	-	-	-	16.3	13.3	10.5	-	-	-	-	-	-
48.0	-	-	-	-	16.9	14.5	11.3	9.0	-	-	-	-	15.5	13.1	10.3	7.7	-	-	-	-	-
52.0	-	-	-	-	-	14.2	11.1	8.8	6.7	-	-	-	-	12.9	10.1	7.6	6.0	-	-	-	-
56.0	-	-	-	-	-	13.5	10.8	8.6	6.5	-	-	-	-	-	10.0	7.5	5.9	-	-	-	-
60.0	-	-	-	-	-	-	10.6	8.4	6.3	-	-	-	-	-	9.8	7.4	5.8	4.2	-	-	-
64.0	-	-	-	-	-	-	10.4	8.3	6.2	-	-	-	-	-	-	7.3	5.7	4.1	-	-	-
68.0	-	-	-	-	-	-	-	8.1	6.0	-	-	-	-	-	-	7.2	5.6	4.1	-	-	-
72.0	-	-	-	-	-	-	-	8.0	5.9	-	-	-	-	-	-	-	5.6	4.0	-	-	-
76.0	-	-	-	-	-	-	-	-	5.8	-	-	-	-	-	-	-	5.5	4.0	-	-	-
80.0	-	-	-	-	-	-	-	-	-	-	-	-	-	-	-	-	-	3.9	-	-	-

With 3.1m boom extension / Avec 3.1m extension de fleche / Mit 3.1m Auslegerverlängerung / Met 3.1m giekverlengstuk



LIEBHERR LTM 1300

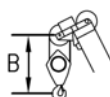
300 TON

Working speeds
Vitesses de travail

Arbeitsgeschwindigkeiten
Werksnelheden

Mechanisms Mécanismes Antriebe Aandrijvingen	Speeds Vitesses Geschwindigkeiten Snelheden	Rope diameter Diamètre du câble Seildurchmesser Kabeldiameter	Single line pull Effort sur brin simple Zulässiger Seilzug je strang Toegelaten trekkracht / part	Length of ropes Longueur des cables Länge der Seile Kabellänge
Main hoist Levage sur flèche Hubwerk 1 Hijlslier 1	0 – 150 m/min	23 mm	100 kN	500 m
Auxiliary hoist 2 Levage sur flèche 2 Hubwerk 2 Hijlslier 2	0 – 150 m/min	23 mm	100 kN	610 m
Auxiliary hoist 3 Levage sur flèche 3 Hubwerk 3 Hijlslier 3	0 – 150 m/min	23 mm	100 kN	640 m
Slewing gear Orientation Drehwerk Zwenkwerk	0 – 1.3 RPM			
Travel speed Vitesse sur route Fahrgeschwindigkeit Rijsnelheid	0 – 41/71 km/h			
Booming up Relever la flèche Aufwippen Optoppen	83° 70 sec			
Telescope Téléscoper Teleskopieren Telescoperen	15.5 - 60 m 490 sec			

Hook Block / Crane hook Crochet mouflé / Crochet simple



Unterflasche / Hakengehänge Kraanblok / Kraanhaak

Capacity Capacité Tragfähigkeit Capaciteit	Number of sheaves Nombre de poulies Anzahl der Rollen Aantal schijven	Number of lines Nombre de brins Strangzahl Aantal parten	Weight Poids Gewicht Gewicht	"B"
SWL 137 t	7	15	2450 kg	3.0 m
SWL 68 t	3	7	1450 kg	3.0 m
SWL 30 t	1	3	760 kg	2.7 m

V.2011-11-21