



sarens.tele

HOOFDZETEL/SIEGE

Autoweg 10
B-1861 Wolvertem, BELGIUM
Tel.: +32 (0)52.319.319
Fax.: +32 (0)52.319.329
e-mail: info@sarens.com
Internet: www.sarens.com

LAROY

Jacobsveldweg 8
B-2160 Wommelgem, BELGIUM
Tel.: +32 (0)3.3 551.551
Fax.: +32 (0)3.3 551.561
e-mail: info@laroy.be

GENT

Postbus 1
B-9060 Zelzate, BELGIUM
Tel.: +32 (0)9.342.66.66
Fax.: +32 (0)9.342.66.61

ANTWERPEN

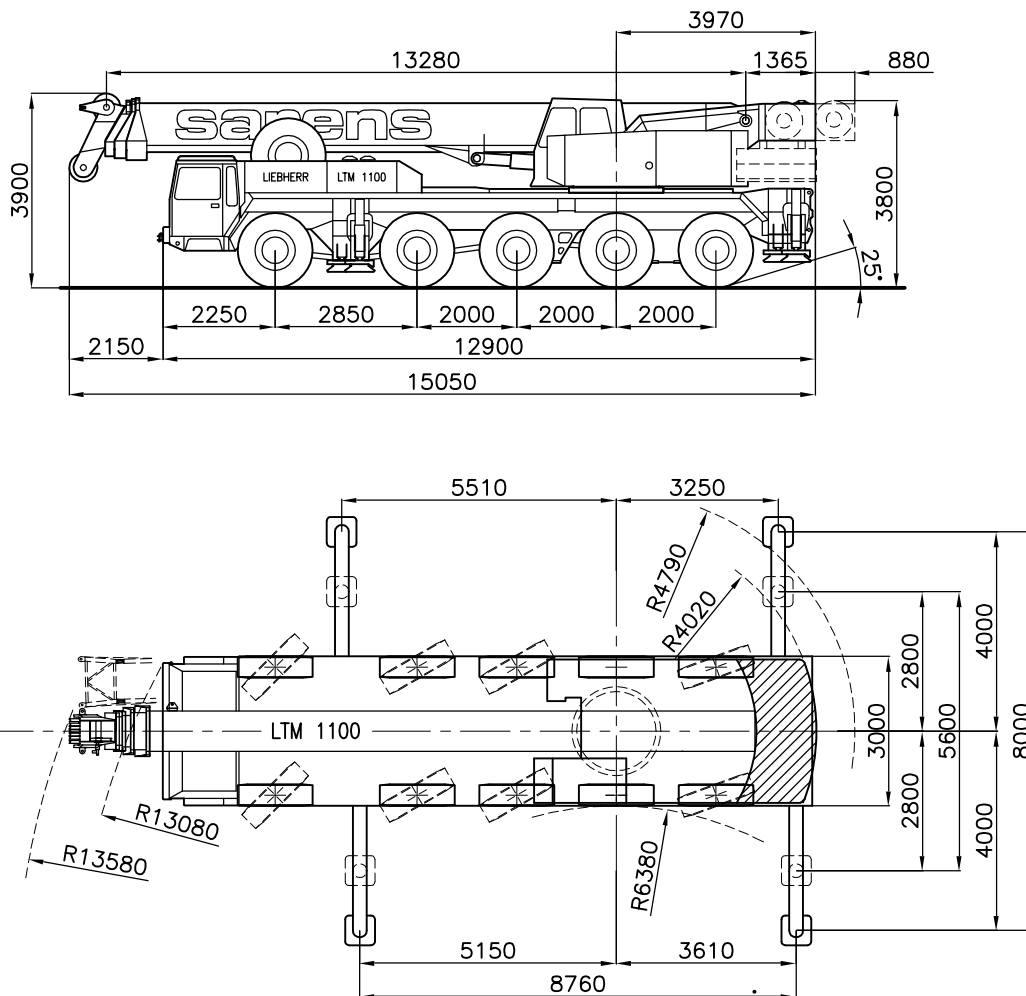
Scheldelaan 600, Haven 725
Locatie C110
B-2040 Antwerpen, BELGIUM
Tel.: +32 (0)3.5 613.440
Fax.: +32 (0)3.5 613.434

SARENS TRAMAUBEN

Grand'Route 51
B-7640 Maubray, BELGIUM
Tel.: +32 (0)69.446.700
Fax.: +32 (0)69.446.710
e-mail: info@tramauben.be

LIEBHERR LTM 1100 100/110 TON

1/150



Axle load / Charge par essieu / Achslast / Aslast

: 5 x 12 t (≡ 2.5 t)

Total weight / Poids total / Gesamtgewicht / Totaal gewicht

: 60 t (≡ 2.5 t)



LIEBHERR LTM 1100

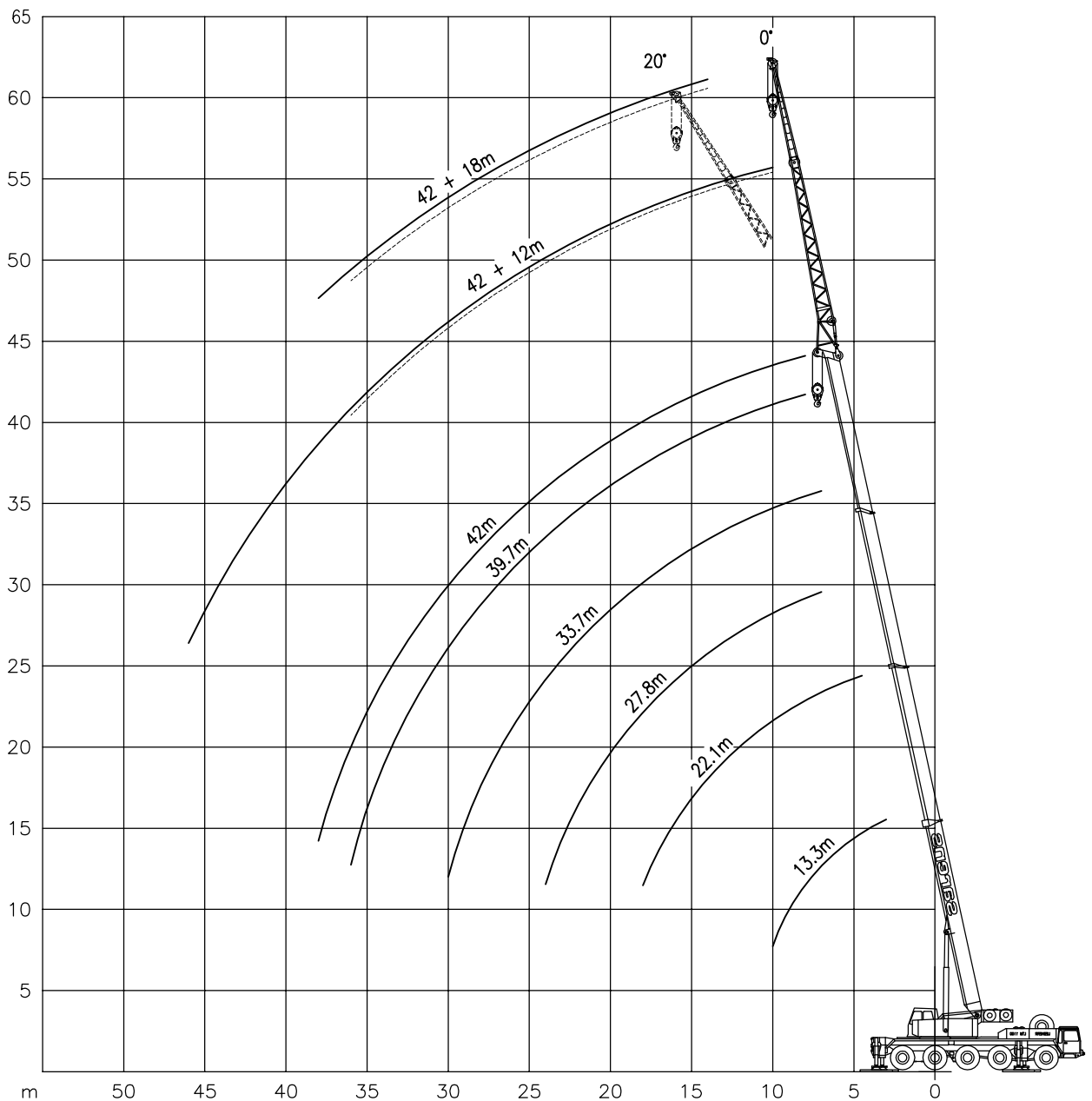
100/110 TON

Working ranges
Portées

Arbeitsbereiche
Werkbereich

T/TK

1/400





LIEBHERR LTM 1100

100/110 TON

Lifting capacities at main boom
Capacités à la flèche principale

Tragfähigkeiten am Hauptausleger
Capaciteiten aan de hoofdgiek



8.76 m x 8 m



15 t

T

360°

DIN 75 %

Radius
Portée
Ausladung

Main Boom – Flèche principale – Hauptausleger – Hoofdgiek

Radius	13.3m	22.1m	27.8m	33.7m	39.7m	42m
m	t	t	t	t	t	t
3	100	-	-	-	-	-
3.5	93	-	-	-	-	-
4	82	-	-	-	-	-
4.5	70	55	-	-	-	-
5	64	52	-	-	-	-
6	53	46	-	-	-	-
7	45	41	34.5	26	-	-
8	39	36.5	32.5	25	19.9	17.4
9	34	31.5	29.7	24.1	19.3	17.1
10	30.5	28	27.2	23	18.8	16.7
12	-	23.9	21.9	20.6	17.6	15.6
14	-	19.7	17.3	17	15.4	14.5
16	-	15.7	14	13.9	13.8	13.3
18	-	12.9	11.2	11.6	11.5	11.4
20	-	-	9.1	9.7	9.7	9.6
22	-	-	7.4	8.1	8.3	8.2
24	-	-	6	6.7	7.1	6.9
26	-	-	-	5.5	6	5.9
28	-	-	-	4.6	5	5
30	-	-	-	3.8	4.2	4.2
32	-	-	-	-	3.5	3.5
34	-	-	-	-	2.9	2.9
36	-	-	-	-	2.4	2.4
38	-	-	-	-	-	2



8.76 m x 8 m



2.5 t

T

360°

DIN 75 %

Radius
Portée
Ausladung

Main Boom – Flèche principale – Hauptausleger – Hoofdgiek

Radius	13.3m	22.1m	27.8m	33.7m	39.7m	42m
m	t	t	t	t	t	t
3	88	-	-	-	-	-
3.5	80	-	-	-	-	-
4	72	-	-	-	-	-
4.5	64	55	-	-	-	-
5	58	52	-	-	-	-
6	47	43	-	-	-	-
7	40	33.5	30.5	26	-	-
8	34.5	31	25	23.6	19	15
9	27.5	25.8	20.8	19.5	17.7	14.3
10	22.1	22	17.6	17	16.4	13.6
12	-	16.6	12.9	12.8	12.5	12.3
14	-	12.6	9.8	9.8	9.8	9.6
16	-	9.8	7.5	7.7	7.7	7.4
18	-	7.8	5.8	6	6.2	5.9
20	-	-	4.4	4.7	4.9	4.6
22	-	-	3.2	3.7	3.8	3.7
24	-	-	2.2	2.9	3	2.9
26	-	-	-	2.1	2.3	2.2
28	-	-	-	1.4	1.8	1.6
30	-	-	-	0.9	1.3	1.2
32	-	-	-	-	0.8	0.8



LIEBHERR LTM 1100

100/110 TON

8.76 m x 8 m 15 t **TK** 360° **DIN 75 %**

Radius Portée Ausladung Radius	Main Boom + Jib / Flèche + Fléchette / Hauptausleger + Hilfsausleger / Hoofdgiek + Hulpgiek									
	33,7 m		39,7 m				42 m			
	12 m		12 m		18 m		12 m		18 m	
	0°	20°	0°	20°	0°	20°	0°	20°	0°	20°
m	t	t	t	t	t	t	t	t	t	t
9	12.5	7.8	-	-	-	-	-	-	-	-
10	12.5	7.5	9.2	7.1	-	-	7.2	5.4	-	-
12	11.9	7	9.2	6.6	5.6	5	7.2	5	-	-
14	10.8	6.6	9.2	6.2	5.6	4.7	7.2	4.7	5.1	3.7
16	9.7	6.2	8.9	5.9	5.6	4.4	7.2	4.5	5.1	3.5
18	8.8	5.8	8.5	5.5	5.6	4.2	7	4.3	5.1	3.3
20	8	5.5	8.1	5.2	5.6	4	6.4	4.1	4.8	3.2
22	7.3	5.3	7.5	4.9	5.6	3.9	5.8	4	4.5	3.1
24	6.8	5.1	6.9	4.6	5.3	3.7	5.4	3.8	4.2	3
26	6.1	4.9	6	4.4	4.9	3.5	5	3.6	3.9	2.8
28	5.2	4.7	5.1	4.1	4.6	3.4	4.7	3.5	3.7	2.7
30	4.5	4.6	4.4	3.9	4.3	3.3	4.2	3.3	3.5	2.6
32	3.9	4.2	3.8	3.7	3.8	3.2	3.6	3.2	3.3	2.5
34	3.3	3.6	3.2	3.5	3.3	3.1	3	3	3.1	2.4
36	2.7	3	2.8	3	2.8	3	2.6	2.9	2.7	2.4
38	2.3	-	2.3	2.6	2.4	2.8	2.2	-	2.3	-
40	1.9	-	1.9	-	2	-	1.8	-	-	-
42	1.6	-	1.6	-	1.7	-	1.5	-	-	-
44	-	-	1.2	-	1.4	-	1.3	-	-	-
46	-	-	1	-	1.2	-	1	-	-	-
48	-	-	-	-	0.9	-	-	-	-	-
50	-	-	-	-	-	-	-	-	-	-

Working speeds

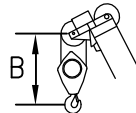
Arbeitsgeschwindigkeiten

Vitesses de travail

Werksnelheden

Mechanisms Mécanismes Antriebe Aandrijvingen	Speeds Vitesses Geschwindigkeiten Snelheden	Rope diameter Diamètre du câble Seildurchmesser Kabeldiameter	Single line pull Effort sur brin simple Zulässiger Seilzug je Strang Toegelaten trekkracht per part	Length of ropes Longueur des câbles Länge der Seile Kabellänge
Main hoist Levage sur flèche Hubwerk 1 Hijslier 1	0 – 120 m/min	21 mm	80	250 m
Slewing gear Orientation Drehwerk Zwenkwerk	0 – 2 RPM 0 – 2 t/min 0 – 2 U/min 0 – 2 tpm			
Travel speed Vitesse sur route Fahrgeschwindigkeit Rijnsnelheid	0 – 67 km/h			

Hook block/Crane hook Crochet mouflé/Crochet simple



Unterflasche/Hakengehänge Kraanblok/Kraanhaak

Capacity Capacité Tragfähigkeit Capaciteit	Number of sheaves Nombre de poulies Anzahl der Rollen Aantal schijven	Number of lines Nombre de brins Strangzahl Aantal parten	Weight Poids Gewicht Gewicht	"B"
SWL 100 t	7	14	580 kg	2.4 m
SWL 80 t	5	11	500 kg	2.4 m
SWL 50 t	3	7	480 kg	2.4 m
SWL 25 t	1	3	560 kg	2.4 m
SWL 8 t	-	1	190 kg	2 m