

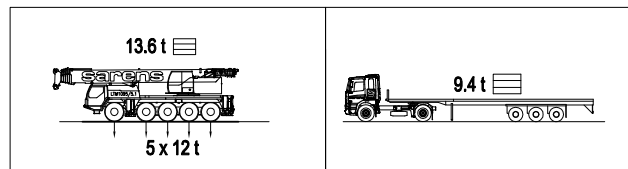
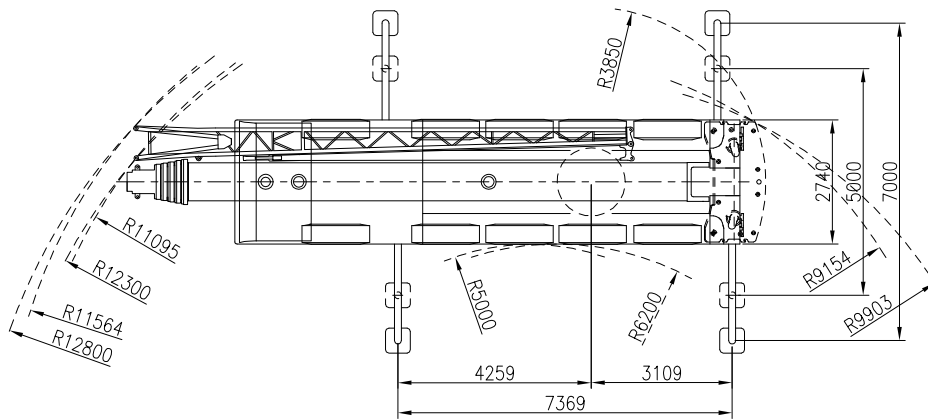
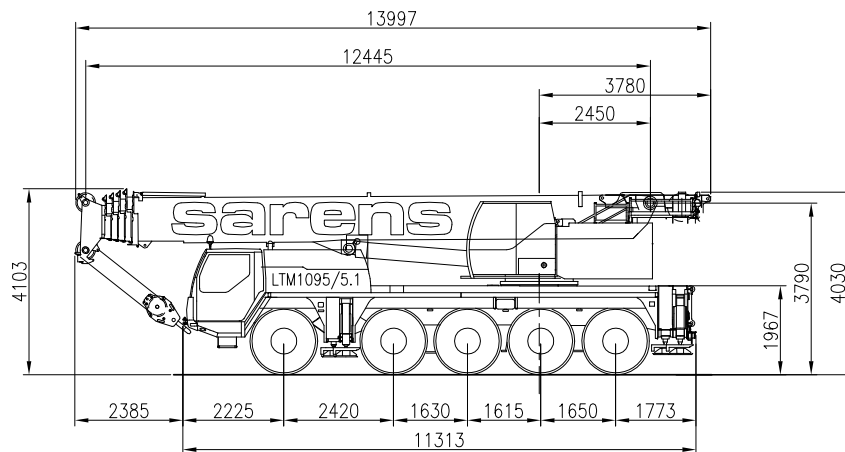


sarens
group

www.sarens.com

LIEBHERR LTM 1095-5.1

95 TON



nothing too heavy, nothing too high





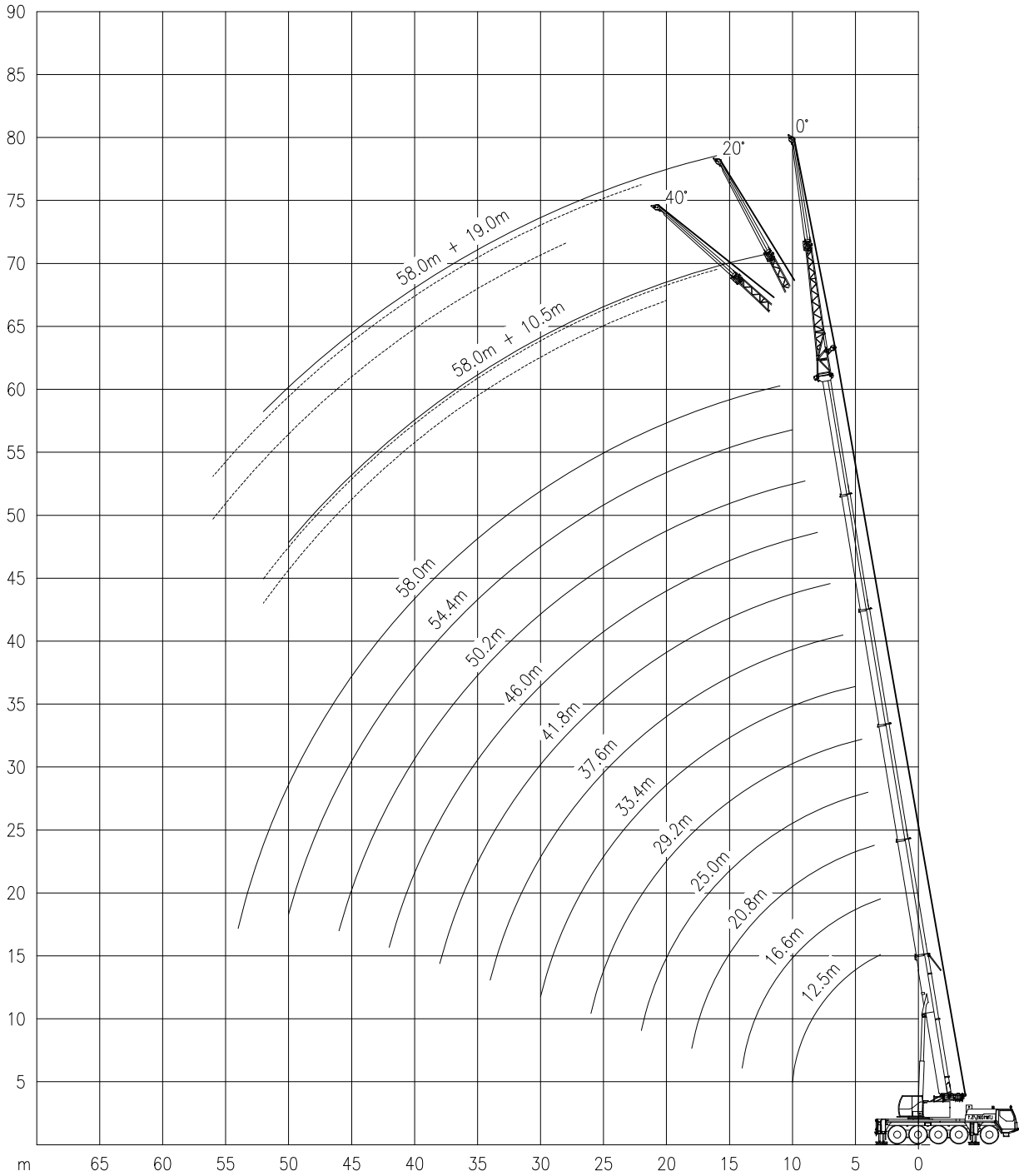
LIEBHERR LTM 1095-5.1

Working ranges
Portées

95 TON

Arbeitsbereiche
Werkbereich

T / TK



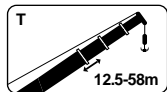


LIEBHERR LTM 1095-5.1

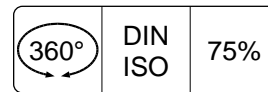
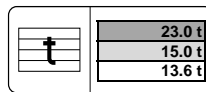
95 TON

Lifting capacities at main boom
Capacités à la flèche principale

Tragfähigkeiten am Hauptausleger
Capaciteiten aan de hoofdgiëk



T



m	12,5m			16,6m		20,8m		25m		29,2m		33,4m	
	t	t	t	t	t	t	t	t	t	t	t	t	t
3	95.0*	75.0	75.0	63.0	63.0	-	-	-	-	-	-	-	-
3,5	73.0*	69.0	69.0	63.0	63.0	58.0	58.0	-	-	-	-	-	-
4	69.0*	62.0	64.0	62.0	63.0	58.0	58.0	48.5	48.5	-	-	-	-
4,5	66.0*	57.0	59.0	57.0	59.0	55.0	55.0	48.0	48.0	38.0	38.0	-	-
5	61.0*	52.0	54.0	52.0	54.0	52.0	53.0	47.0	47.0	37.5	37.5	30.0	30.0
6	49.5*	43.0	46.0	44.0	46.5	43.5	46.5	40.5	45.0	36.0	36.0	29.3	29.3
7	41.0*	36.0	39.5	37.0	40.5	36.0	40.0	34.5	40.0	32.0	35.0	28.4	28.4
8	35.0*	30.5	34.0	31.5	34.5	31.0	34.5	29.3	34.0	27.3	33.5	26.6	27.3
9	30.0*	26.2	29.4	26.9	30.0	26.8	29.7	25.2	30.5	24.8	29.9	23.0	25.8
10	26.4*	22.2	25.8	23.1	26.5	23.3	26.1	21.9	26.7	21.6	26.3	20.1	24.3
11	-	-	-	19.7	23.5	20.1	23.7	20.2	23.6	19.1	23.3	17.7	22.9
12	-	-	-	17.4	21.0	18.1	21.2	17.9	21.1	17.0	20.8	15.8	20.8
14	-	-	-	13.4	17.1	14.0	17.3	14.1	17.2	13.7	17.7	12.9	17.2
16	-	-	-	-	-	11.2	14.7	11.3	14.9	11.2	14.7	11.1	14.4
18	-	-	-	-	-	9.2	12.4	9.3	12.4	9.1	12.3	9.6	12.0
20	-	-	-	-	-	-	-	7.8	10.6	7.7	10.5	8.0	10.1
22	-	-	-	-	-	-	-	6.9	9.1	6.5	9.0	6.8	8.7
24	-	-	-	-	-	-	-	-	-	5.6	7.8	5.9	8.1
26	-	-	-	-	-	-	-	-	-	4.8	6.8	5.1	7.2
28	-	-	-	-	-	-	-	-	-	-	-	4.7	6.3
30	-	-	-	-	-	-	-	-	-	-	-	4.2	5.6
32	-	-	-	-	-	-	-	-	-	-	-	-	-

m	37,6m		41,8m		46,0m		50,2m		54,4m		58m		m
	t	t	t	t	t	t	t	t	t	t	t		
5	-	-	-	-	-	-	-	-	-	-	-	5	
6	22.4	22.4	-	-	-	-	-	-	-	-	-	6	
7	22.0	22.0	18.2	18.2	-	-	-	-	-	-	-	7	
8	20.9	20.9	17.5	17.5	13.7	13.7	-	-	-	-	-	8	
9	19.7	19.7	16.6	16.6	13.4	13.4	10.3	10.3	-	-	-	9	
10	18.5	18.5	15.6	15.6	12.9	12.9	10.1	10.1	8.0	8.0	-	10	
11	16.6	17.3	14.7	14.7	12.4	12.4	9.8	9.8	8.0	8.0	6.2	6.2	11
12	15.1	16.2	13.9	13.9	11.9	11.9	9.5	9.5	7.9	7.9	6.2	6.2	12
14	12.8	14.3	11.4	12.4	10.7	10.7	8.9	8.9	7.5	7.5	5.8	5.8	14
16	10.7	12.6	9.9	11.1	9.2	9.7	8.2	8.2	7.0	7.0	5.5	5.5	16
18	9.0	11.2	8.4	10.0	7.7	8.7	7.6	7.6	6.5	6.5	5.3	5.3	18
20	7.7	10.1	7.7	9.0	7.0	8.0	6.5	7.0	6.1	6.1	5.0	5.0	20
22	6.7	9.0	6.6	8.2	6.1	7.3	5.7	6.5	5.6	5.6	4.7	4.7	22
24	6.1	7.8	5.8	7.1	5.5	6.6	5.3	6.0	4.9	5.3	4.4	4.4	24
26	5.3	6.8	4.9	6.5	4.9	6.1	4.7	5.5	4.2	4.9	4.1	4.2	26
28	4.6	6.0	4.5	5.8	4.2	5.4	4.0	5.0	3.6	4.6	3.5	3.9	28
30	4.0	5.3	4.0	5.5	3.7	4.7	3.5	4.6	3.1	4.3	3.0	3.7	30
32	3.5	4.7	3.5	4.8	3.2	4.4	3.0	4.2	2.7	4.0	2.6	3.4	32
34	3.1	4.3	3.0	4.3	2.8	4.0	2.6	3.7	2.3	3.7	2.2	3.2	34
36	-	-	2.6	3.8	2.4	3.7	2.2	3.4	1.9	3.4	1.8	3.0	36
38	-	-	2.3	3.4	2.1	3.4	1.9	3.2	1.6	3.0	1.5	2.9	38
40	-	-	-	-	1.8	3.1	1.6	3.0	1.3	2.7	1.3	2.7	40
42	-	-	-	-	1.5	2.7	1.3	2.6	1.0	2.3	-	2.3	42
44	-	-	-	-	-	-	1.1	2.3	-	2.0	-	2.0	44
46	-	-	-	-	-	-	0.9	2.0	-	1.7	-	1.7	46
48	-	-	-	-	-	-	-	-	-	1.5	-	1.5	48
50	-	-	-	-	-	-	-	-	-	1.2	-	1.2	50
52	-	-	-	-	-	-	-	-	-	-	-	1.0	52
54	-	-	-	-	-	-	-	-	-	-	-	0.9	54

*Over rear / en arrière / Nach hinten / over achterkant.

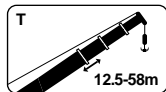


LIEBHERR LTM 1095-5.1

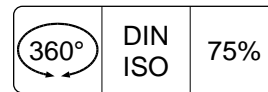
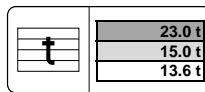
95 TON

Lifting capacities at main boom
Capacités à la flèche principale

Tragfähigkeiten am Hauptausleger
Capaciteiten aan de hoofdgiel



T



m	12,5m		16,6m		20,8m		25m		29,2m		33,4m		m
	t	t	t	t	t	t	t	t	t	t	t	t	
3	68,0	69,0	63,0	63,0	-	-	-	-	-	-	-	-	3
3,5	61,0	63,0	61,0	63,0	55,0	58,0	-	-	-	-	-	-	3,5
4	56,0	57,0	54,0	57,0	47,5	57,0	43,5	48,5	-	-	-	-	4
4,5	50,0	52,0	46,0	53,0	42,0	53,0	38,0	48,0	34,5	38,0	-	-	4,5
5	43,0	48,0	40,0	48,5	36,5	47,0	34,0	43,5	32,0	37,5	29,0	30,0	5
6	33,0	40,5	31,0	41,0	30,0	37,5	28,0	36,0	26,0	33,0	23,7	29,3	6
7	26,2	33,5	25,7	34,0	24,6	32,0	23,2	29,8	21,7	28,9	20,1	26,8	7
8	20,8	28,1	21,4	28,3	20,8	26,9	19,7	25,7	18,4	24,8	17,2	23,1	8
9	16,9	23,0	18,2	24,0	17,8	23,3	17,0	22,9	16,0	21,6	15,8	20,1	9
10	14,0	19,3	15,3	20,6	15,5	21,0	14,8	20,1	14,1	19,0	13,9	17,7	10
11	-	-	13,0	17,7	13,6	18,3	13,0	17,9	12,4	16,9	12,3	15,8	11
12	-	-	11,2	15,4	11,8	16,0	11,6	16,0	11,0	15,2	11,0	14,3	12
14	-	-	8,6	12,1	9,2	12,6	9,7	12,7	8,9	12,4	9,0	12,2	14
16	-	-	-	-	7,3	10,2	7,8	10,3	7,4	10,2	7,9	10,5	16
18	-	-	-	-	6,0	8,5	6,4	8,6	6,5	8,5	6,6	8,9	18
20	-	-	-	-	-	-	5,4	7,5	5,5	7,2	5,5	7,5	20
22	-	-	-	-	-	-	4,5	6,6	4,6	6,1	4,6	6,4	22
24	-	-	-	-	-	-	-	-	3,8	5,2	3,9	5,5	24
26	-	-	-	-	-	-	-	-	3,2	4,5	3,4	4,8	26
28	-	-	-	-	-	-	-	-	-	-	2,8	4,5	28
30	-	-	-	-	-	-	-	-	-	-	2,4	4,0	30
32	-	-	-	-	-	-	-	-	-	-	-	-	32

m	37,6m		41,8m		46,0m		50,2m		54,4m		58m		m
	t	t	t	t	t	t	t	t	t	t	t	t	
5	-	-	-	-	-	-	-	-	-	-	-	-	5
6	21,9	22,4	-	-	-	-	-	-	-	-	-	-	6
7	18,8	22,0	17,4	18,2	-	-	-	-	-	-	-	-	7
8	16,8	20,9	15,4	17,5	13,7	13,7	-	-	-	-	-	-	8
9	14,6	18,8	13,5	16,6	12,5	13,4	10,3	10,3	-	-	-	-	9
10	12,8	17,0	12,0	15,6	11,0	12,9	10,1	10,1	8,0	8,0	-	-	10
11	11,6	15,2	11,2	14,1	9,7	12,4	9,6	9,8	8,0	8,0	6,2	6,2	11
12	10,5	14,1	10,1	12,7	8,6	11,9	8,6	9,5	7,9	7,9	6,2	6,2	12
14	8,9	11,7	8,2	10,9	6,8	10,2	7,6	8,9	7,0	7,5	5,8	5,8	14
16	7,4	9,8	7,2	9,1	5,5	8,4	6,3	8,2	5,7	7,0	5,5	5,5	16
18	6,2	8,3	6,0	8,3	4,4	7,0	5,2	7,1	4,7	6,5	4,5	5,3	18
20	5,3	7,3	5,1	7,1	3,5	5,9	4,3	6,2	3,8	6,1	3,7	5,0	20
22	4,4	6,6	4,3	6,2	2,8	5,0	3,6	5,7	3,2	5,3	3,1	4,7	22
24	3,8	5,7	3,7	5,4	2,2	4,2	3,0	5,0	2,6	4,5	2,5	4,4	24
26	3,2	5,0	3,1	4,8	1,7	3,6	2,5	4,4	2,1	3,9	2,0	3,8	26
28	2,7	4,3	2,7	4,3	-	3,0	2,1	3,8	1,6	3,4	1,6	3,3	28
30	2,3	3,8	2,3	3,8	-	2,5	1,7	3,3	-	2,9	-	2,8	30
32	1,9	3,3	1,9	3,3	-	2,1	1,3	2,8	-	2,4	-	2,4	32
34	1,6	2,9	1,5	2,9	-	1,7	-	2,5	-	2,1	-	2,0	34
36	-	-	1,2	2,5	-	1,3	-	2,1	-	1,7	-	1,7	36
38	-	-	1,0	2,2	-	-	-	1,8	-	1,4	-	1,4	38
40	-	-	-	-	-	-	-	1,5	-	1,2	-	1,1	40
42	-	-	-	-	-	-	-	1,2	-	-	-	-	42
44	-	-	-	-	-	-	-	1,0	-	-	-	-	44
46	-	-	-	-	-	-	-	0,8	-	-	-	-	46

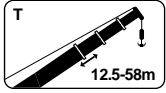


LIEBHERR LTM 1095-5.1

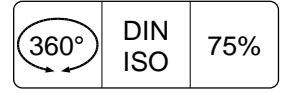
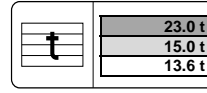
95 TON

Lifting capacities at main boom
Capacités à la flèche principale

Tragfähigkeiten am Hauptausleger
Capaciteiten aan de hoofdgiel



T



m	12,5m		16,6m		20,8m		25m		29,2m		33,4m		37,6m		41,8m		46m		50,2m		54,4m		m	
	t	t	t	t	t	t	t	t	t	t	t	t	t	t	t	t	t	t	t	t	t			
5	17,9	-	16,3	-	14,6	-	-	-	-	-	-	-	-	-	-	-	-	-	-	-	-	-	5	
6	14,0	-	13,9	-	12,4	-	10,1	-	-	-	-	-	-	-	-	-	-	-	-	-	-	-	6	
7	11,2	13,3	11,7	12,7	10,8	11	10,0	-	9,0	-	8,1	-	-	-	-	-	-	-	-	-	-	-	7	
8	9,1	14	9,7	11,4	9,8	11,9	9,4	8,9	8,7	-	7,8	-	6,9	-	-	-	-	-	-	-	-	-	8	
9	7,6	11,6	8,2	11,6	8,3	10,9	8,5	10,0	8,2	9,1	7,4	-	7,0	-	6,0	-	-	-	-	-	-	-	9	
10	6,1	9,7	6,9	10,8	7,1	10,2	7,3	9,5	7,1	8,7	7,0	7,9	6,5	6,7	6,2	-	5,7	-	5,2	-	-	-	10	
11	-	-	5,9	9,3	6,2	9,6	6,4	8,3	6,3	7,6	6,1	7,8	5,7	7,1	5,4	6,1	4,9	5,5	4,5	-	-	-	11	
12	-	-	5,1	8,1	5,3	8,5	5,6	8,3	5,5	7,8	5,4	7,1	5,0	6,9	4,8	6,5	4,3	5,8	3,9	4,9	-	-	12	
14	-	-	3,6	6,2	4,1	6,7	4,4	7,1	4,3	6,9	4,2	6,3	3,9	6,0	3,7	5,5	3,3	5,2	3,0	4,6	-	-	14	
16	-	-	-	-	3,1	5,3	3,4	5,8	3,4	5,7	3,4	5,6	3,0	5,3	2,9	5,1	2,5	4,6	-	4,3	-	3,8	16	
18	-	-	-	-	2,3	4,2	2,7	4,6	2,6	4,7	2,6	4,7	2,4	4,4	2,2	4,2	-	3,8	-	3,5	-	3,0	18	
20	-	-	-	-	-	2,1	3,8	2,1	3,8	2,1	3,8	2,1	3,9	-	3,6	-	3,5	-	3,1	-	2,8	-	2,4	20
22	-	-	-	-	-	-	1,6	3,2	-	3,2	-	3,3	-	3,0	-	2,9	-	2,5	-	2,3	-	1,8	22	
24	-	-	-	-	-	-	-	-	-	2,7	-	2,8	-	2,5	-	2,4	-	2,0	-	1,8	-	-	-	24
26	-	-	-	-	-	-	-	-	-	2,2	-	2,3	-	2,1	-	2,0	-	1,6	-	-	-	-	-	26
28	-	-	-	-	-	-	-	-	-	-	-	1,9	-	1,7	-	1,6	-	-	-	-	-	-	-	28
30	-	-	-	-	-	-	-	-	-	-	-	1,6	-	1,4	-	-	-	-	-	-	-	-	-	30

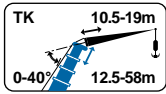


LIEBHERR LTM 1095-5.1

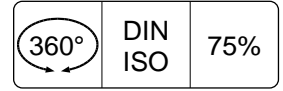
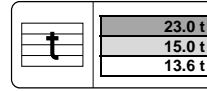
95 TON

Lifting capacities at fixed jib
Capacités à la flèche treillis fixe

Tragfähigkeiten am starren Hilfsausleger
Capaciteiten aan de vaste hulpjiek



TK



m	12.5 m						29.2m						m
	10.5m			19.0m			10.5m			19.0m			
	0°	20°	40°	0°	20°	40°	0°	20°	40°	0°	20°	40°	
	t	t	t	t	t	t	t	t	t	t	t	t	
4	11.4	-	-	3.7	-	-	-	-	-	-	-	-	4
5	11.2	9.1	-	3.7	-	-	11.4	-	-	-	-	-	5
6	10.6	8.8	-	3.7	-	-	11.4	-	-	-	-	-	6
7	9.9	8.3	6.8	3.7	-	-	11.4	-	-	3.7	-	-	7
8	9.2	7.9	6.7	3.6	-	-	11.4	-	-	3.7	-	-	8
9	8.5	7.5	6.4	3.5	3.0	-	11.4	9.1	-	3.7	-	-	9
10	7.8	7.2	6.3	3.4	3.0	-	11.4	8.8	-	3.7	-	-	10
11	7.3	6.8	6.1	3.3	3.0	-	11.1	8.5	6.8	3.7	-	-	11
12	6.8	6.3	5.9	3.1	2.9	-	10.7	8.3	6.6	3.7	-	-	12
14	5.9	5.6	5.5	2.8	2.8	2.4	9.8	7.8	6.4	3.4	3.0	-	14
16	5.3	5.1	5.0	2.5	2.6	2.4	9.0	7.4	6.2	3.4	3.0	-	16
18	4.7	4.6	4.6	2.2	2.4	2.3	8.2	7.0	6.1	3.3	2.9	-	18
20	4.2	4.3	-	2.0	2.1	2.2	7.5	6.5	5.9	3.1	2.8	2.4	20
22	-	-	-	1.8	1.9	2.0	6.9	6.1	5.6	2.9	2.7	2.4	22
24	-	-	-	1.6	1.7	1.8	6.4	5.7	5.3	2.7	2.5	2.3	24
26	-	-	-	1.5	1.5	1.6	5.9	5.4	5.1	2.5	2.4	2.3	26
28	-	-	-	1.4	1.4	-	5.5	5.1	4.9	2.3	2.2	2.2	28
30	-	-	-	-	-	-	5.2	4.8	4.7	2.1	2.1	2.1	30
32	-	-	-	-	-	-	4.9	4.6	4.6	2.0	2.0	2.0	32
34	-	-	-	-	-	-	4.3	4.4	-	1.9	1.8	1.9	34
36	-	-	-	-	-	-	3.9	4.0	-	1.7	1.7	1.7	36
38	-	-	-	-	-	-	-	-	-	1.6	1.6	1.7	38
40	-	-	-	-	-	-	-	-	-	1.5	1.5	1.6	40
42	-	-	-	-	-	-	-	-	-	1.4	1.5	-	42
44	-	-	-	-	-	-	-	-	-	1.4	1.4	-	44

m	33.4 m						37.6 m						m
	10.5m			19.0m			10.5m			19.0m			
	0°	20°	40°	0°	20°	40°	0°	20°	40°	0°	20°	40°	
	t	t	t	t	t	t	t	t	t	t	t	t	
6	11.4	-	-	-	-	-	-	-	-	-	-	-	6
7	11.4	-	-	-	-	-	10.0	-	-	-	-	-	7
8	11.4	-	-	3.5	-	-	10.0	-	-	-	-	-	8
9	11.3	-	-	3.5	-	-	10.0	-	-	3.2	-	-	9
10	11.0	8.7	-	3.5	-	-	10.0	-	-	3.2	-	-	10
11	10.7	8.5	-	3.5	-	-	9.8	8.2	-	3.2	-	-	11
12	10.4	8.3	6.6	3.5	-	-	9.6	8.1	-	3.2	-	-	12
14	9.8	7.9	6.4	3.5	-	-	9.2	7.7	6.3	3.2	-	-	14
16	9.2	7.5	6.2	3.4	2.9	-	8.8	7.4	6.1	3.2	2.8	-	16
18	8.6	7.1	6.0	3.2	2.8	-	8.4	7.0	6.0	3.1	2.8	-	18
20	7.9	6.7	5.9	3.1	2.7	2.4	7.9	6.7	5.9	3.0	2.7	-	20
22	7.3	6.3	5.7	3.0	2.6	2.4	7.5	6.4	5.7	2.9	2.6	2.3	22
24	6.8	6.0	5.5	2.8	2.5	2.3	7.0	6.1	5.6	2.7	2.5	2.3	24
26	6.3	5.6	5.3	2.6	2.4	2.3	6.2	5.7	5.3	2.6	2.4	2.3	26
28	5.9	5.3	5.1	2.4	2.3	2.2	5.5	5.5	5.1	2.4	2.3	2.2	28
30	5.1	5.1	4.9	2.3	2.2	2.2	4.9	5.0	5.0	2.2	2.2	2.1	30
32	4.5	4.7	4.7	2.1	2.1	2.1	4.3	4.5	4.6	2.1	2.1	2.1	32
34	4.0	4.1	4.2	2.0	2.0	2.0	3.8	4.0	4.1	1.9	2.0	2.0	34
36	3.6	3.6	3.7	1.9	1.9	1.9	3.3	3.5	3.6	1.8	1.8	1.9	36
38	3.1	3.2	-	1.8	1.8	1.8	2.9	3.0	3.1	1.7	1.7	1.8	38
40	2.8	2.8	-	1.7	1.7	1.7	2.5	2.6	2.7	1.6	1.6	1.7	40
42	-	-	-	1.6	1.6	1.6	2.2	2.3	-	1.5	1.5	1.6	42
44	-	-	-	1.5	1.5	1.6	1.9	1.9	-	1.4	1.4	1.5	44
46	-	-	-	1.5	1.5	-	-	-	-	1.3	1.3	1.4	46
48	-	-	-	1.4	1.4	-	-	-	-	1.2	1.3	1.3	48
50	-	-	-	-	-	-	-	-	-	1.2	1.2	-	50
52	-	-	-	-	-	-	-	-	-	1.1	1.1	-	52
54	-	-	-	-	-	-	-	-	-	1.0	-	-	54

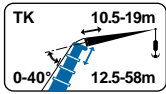


LIEBHERR LTM 1095-5.1

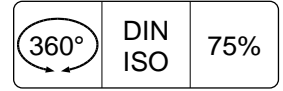
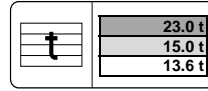
95 TON

Lifting capacities at fixed jib
Capacités à la flèche treillis fixe

Tragfähigkeiten am starren Hilfsausleger
Capaciteiten aan de vaste hulpjiek



TK



Jib Length (m)	41.8 m						46.0 m						Jib Length (m)	
	10.5m			19.0m			10.5m			19.0m				
	0°	20°	40°	0°	20°	40°	0°	20°	40°	0°	20°	40°		
	t	t	t	t	t	t	t	t	t	t	t	T		
8	8.5	-	-	-	-	-	-	-	-	-	-	-	8	
9	8.5	-	-	-	-	-	7.0	-	-	-	-	-	9	
10	8.5	-	-	3.0	-	-	7.0	-	-	-	-	-	10	
11	8.5	-	-	3.0	-	-	7.0	-	-	-	3.0	-	11	
12	8.4	7.5	-	3.0	-	-	7.0	-	-	-	3.0	-	12	
14	8.3	7.3	6.1	3.0	-	-	7.0	6.7	-	-	3.0	-	14	
16	8.0	7.0	6.0	3.0	-	-	6.7	6.4	5.7	-	3.0	-	16	
18	7.6	6.8	5.9	3.0	2.7	-	6.3	6.0	5.6	-	3.0	2.7	18	
20	7.0	6.6	5.8	3.0	2.7	-	5.8	5.6	5.4	-	3.0	2.7	20	
22	6.4	6.2	5.7	2.9	2.6	2.3	5.4	5.2	5.1	-	3.0	2.6	22	
24	5.8	5.8	5.5	2.7	2.5	2.3	5.0	4.9	4.8	-	2.9	2.6	2.3	24
26	5.4	5.3	5.2	2.6	2.5	2.2	4.7	4.5	4.5	-	2.8	2.5	2.2	26
28	4.9	4.9	4.9	2.5	2.4	2.2	4.3	4.2	4.2	-	2.8	2.5	2.2	28
30	4.5	4.5	4.6	2.3	2.2	2.2	3.9	3.9	3.9	-	2.7	2.4	2.2	30
32	3.9	4.2	4.2	2.2	2.1	2.1	3.6	3.6	3.6	-	2.6	2.4	2.2	32
34	3.4	3.7	3.8	2.0	2.0	2.0	3.3	3.3	3.4	-	2.4	2.3	2.2	34
36	3.1	3.2	3.3	1.9	1.9	1.9	2.9	3.1	3.2	-	2.3	2.2	2.1	36
38	2.8	2.9	2.9	1.8	1.8	1.8	2.5	2.7	2.9	-	2.2	2.2	2.1	38
40	2.5	2.6	2.7	1.7	1.7	1.8	2.4	2.4	2.5	-	2.1	2.1	2.1	40
42	2.1	2.3	2.3	1.6	1.6	1.7	2.2	2.3	2.3	-	2.0	2.0	2.0	42
44	1.8	1.9	2.0	1.5	1.5	1.6	1.9	2.0	2.1	-	1.8	1.9	1.9	44
46	1.5	1.6	-	1.4	1.5	1.5	1.6	1.7	1.8	-	1.7	1.8	1.8	46
48	1.3	1.4	-	1.4	1.4	1.4	1.5	1.6	1.6	-	1.7	1.7	1.7	48
50	-	-	-	1.3	1.3	1.3	1.4	1.5	-	-	1.4	1.6	1.6	50
52	-	-	-	1.2	1.2	1.3	1.3	1.3	-	-	1.2	1.4	1.5	52
54	-	-	-	1.2	1.2	-	-	-	-	-	1.1	1.2	1.3	54
56	-	-	-	1.1	1.1	-	-	-	-	-	1.0	1.1	1.1	56
58	-	-	-	1.0	-	-	-	-	-	-	1.0	1.0	-	58
60	-	-	-	-	-	-	-	-	-	-	0.8	0.9	-	60
62	-	-	-	-	-	-	-	-	-	-	0.7	-	-	62

Jib Length (m)	50.2 m						54.4 m						Jib Length (m)	
	10.5m			19.0m			10.5m			19.0m				
	0°	20°	40°	0°	20°	40°	0°	20°	40°	0°	20°	40°		
	t	t	t	t	t	t	t	t	t	t	t	t		
10	5.1	-	-	-	-	-	-	-	-	-	-	-	10	
11	5.1	-	-	-	-	-	4.0	-	-	-	-	-	11	
12	5.1	-	-	2.8	-	-	4.0	-	-	-	-	-	12	
14	5.1	5.1	-	2.8	-	-	4.0	-	-	-	2.3	-	14	
16	5.0	4.9	-	2.8	-	-	3.9	3.9	-	-	2.3	-	16	
18	4.9	4.6	4.5	2.8	-	-	3.8	3.7	3.6	-	2.3	-	18	
20	4.6	4.4	4.2	2.8	2.6	-	3.6	3.6	3.5	-	2.3	-	20	
22	4.3	4.1	4.0	2.8	2.6	-	3.5	3.4	3.4	-	2.3	2.3	22	
24	4.0	3.9	3.8	2.7	2.5	2.2	3.3	3.2	3.2	-	2.3	2.3	24	
26	3.8	3.6	3.6	2.7	2.5	2.2	3.2	3.1	3.1	-	2.3	2.3	2.1	26
28	3.5	3.4	3.4	2.7	2.4	2.2	3.0	2.9	2.9	-	2.3	2.2	2.1	28
30	3.3	3.3	3.3	2.6	2.4	2.2	2.9	2.8	2.8	-	2.2	2.2	2.1	30
32	3.1	3.1	3.1	2.5	2.3	2.1	2.7	2.7	2.7	-	2.1	2.1	2.0	32
34	2.9	2.9	2.9	2.4	2.3	2.1	2.6	2.5	2.5	-	2.0	2.0	2.0	34
36	2.7	2.8	2.8	2.3	2.2	2.1	2.4	2.4	2.4	-	2.0	1.9	1.9	36
38	2.6	2.6	2.6	2.2	2.2	2.1	2.3	2.3	2.3	-	1.9	1.9	1.9	38
40	2.3	2.4	2.5	2.1	2.1	2.1	2.2	2.2	2.2	-	1.8	1.8	1.8	40
42	2.0	2.1	2.2	2.0	2.0	2.0	2.1	2.1	2.1	-	1.7	1.7	1.7	42
44	1.9	1.9	1.9	1.9	1.9	1.9	1.8	2.0	2.0	-	1.6	1.6	1.7	44
46	1.8	1.8	1.8	1.6	1.8	1.9	1.5	1.7	1.8	-	1.6	1.6	1.6	46
48	1.5	1.7	1.7	1.5	1.7	1.8	1.2	1.4	1.5	-	1.4	1.5	1.5	48
50	1.3	1.4	1.4	1.4	1.4	1.6	1.0	1.1	1.2	-	1.2	1.4	1.5	50
52	1.1	1.2	-	1.3	1.3	1.4	-	0.9	1.0	-	1.0	1.3	1.4	52
54	0.9	1.0	-	1.1	1.3	1.3	-	-	-	-	0.8	1.1	1.2	54
56	0.7	0.8	-	0.9	1.1	1.2	-	-	-	-	-	0.9	1.0	56
58	-	-	-	0.8	0.9	1.0	-	-	-	-	-	-	0.8	58
60	-	-	-	-	0.7	0.8	-	-	-	-	-	-	-	60

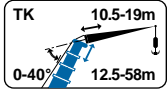


LIEBHERR LTM 1095-5.1

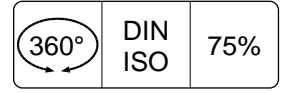
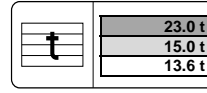
95 TON

Lifting capacities at fixed jib
Capacités à la flèche treillis fixe

Tragfähigkeiten am starren Hilfsausleger
Capaciteiten aan de vaste hulpjiek



TK



m	58.0 m												m
	10.5m			19.0m									
	0°	20°	40°	0°	20°	40°							
t	t	t	t	t	t								
10	-	-	-	-	-	-							10
11	-	-	-	-	-	-							11
12	3.2	-	-	-	-	-							12
14	3.2	-	-	-	-	-							14
16	3.2	3.2	-	1.9	-	-							16
18	3.2	3.2	-	1.9	-	-							18
20	3.2	3.1	3.1	1.9	-	-							20
22	3.1	3.0	3.0	1.9	1.9	-							22
24	3.0	2.9	2.9	1.9	1.9	-							24
26	2.9	2.8	2.8	1.8	1.9	-							26
28	2.7	2.7	2.7	1.8	1.9	1.9							28
30	2.6	2.5	2.5	1.8	1.9	1.9							30
32	2.4	2.4	2.4	1.8	1.9	1.9							32
34	2.3	2.3	2.3	1.7	1.8	1.8							34
36	2.2	2.2	2.2	1.7	1.8	1.8							36
38	2.1	2.1	2.1	1.7	1.7	1.7							38
40	2.0	2.0	2.0	1.6	1.6	1.7							40
42	1.8	1.9	1.9	1.6	1.6	1.6							42
44	1.7	1.8	1.8	1.5	1.5	1.5							44
46	1.4	1.6	1.7	1.4	1.4	1.5							46
48	1.2	1.3	1.4	1.3	1.4	1.4							48
50	1.0	1.1	1.2	1.1	1.3	1.3							50
52	-	0.9	1.0	0.9	1.2	1.3							52
54	-	-	-	-	1.0	1.2							54
56	-	-	-	-	0.8	0.9							56
58	-	-	-	-	-	-							58
60	-	-	-	-	-	-							60

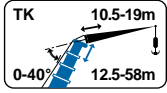


LIEBHERR LTM 1095-5.1

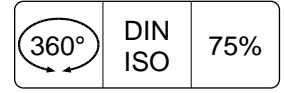
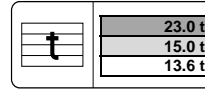
95 TON

Lifting capacities at fixed jib
Capacités à la flèche treillis fixe

Tragfähigkeiten am starren Hilfsausleger
Capaciteiten aan de vaste hulpjiek



TK



	12.5 m						29.2m						
	10.5m			19.0m			10.5m			19.0m			
	0°	20°	40°	0°	20°	40°	0°	20°	40°	0°	20°	40°	
	t	t	t	t	t	t	t	t	t	t	t	t	
4	11.4	-	-	3.7	-	-	-	-	-	-	-	-	4
5	11.2	9.1	-	3.7	-	-	11.4	-	-	-	-	-	5
6	10.6	8.8	-	3.7	-	-	11.4	-	-	-	-	-	6
7	9.9	8.3	6.8	3.7	-	-	11.4	-	-	3.7	-	-	7
8	9.2	7.9	6.7	3.6	-	-	11.4	-	-	3.7	-	-	8
9	8.5	7.5	6.4	3.5	3.0	-	11.4	9.1	-	3.7	-	-	9
10	7.8	7.2	6.3	3.4	3.0	-	11.4	8.8	-	3.7	-	-	10
11	7.3	6.8	6.1	3.3	3.0	-	11.1	8.5	6.8	3.7	-	-	11
12	6.8	6.3	5.9	3.1	2.9	2.4	10.7	8.3	6.6	3.7	-	-	12
14	5.9	5.6	5.5	2.8	2.8	2.4	9.8	7.8	6.4	3.4	3.0	-	14
16	5.3	5.1	5.0	2.5	2.6	2.3	9.0	7.4	6.2	3.4	3.0	-	16
18	4.7	4.6	4.6	2.2	2.4	2.2	8.2	7.0	6.1	3.3	2.9	-	18
20	4.2	4.3	-	2.0	2.1	2.0	7.3	6.5	5.9	3.1	2.8	2.4	20
22	-	-	-	1.8	1.9	1.8	6.3	6.1	5.6	2.9	2.7	2.4	22
24	-	-	-	1.6	1.7	1.6	5.5	5.7	5.3	2.7	2.5	2.3	24
26	-	-	-	1.5	1.5	-	4.7	5.0	5.1	2.5	2.4	2.3	26
28	-	-	-	1.4	1.4	-	4.0	4.3	4.4	2.3	2.2	2.2	28
30	-	-	-	-	-	-	3.5	3.7	3.8	2.1	2.1	2.1	30
32	-	-	-	-	-	-	3.0	3.2	3.2	2.0	2.0	2.0	32
34	-	-	-	-	-	-	2.6	2.7	-	1.9	1.8	1.9	34
36	-	-	-	-	-	-	2.2	2.3	-	1.7	1.7	1.7	36
38	-	-	-	-	-	-	-	-	-	1.6	1.6	1.7	38
40	-	-	-	-	-	-	-	-	-	1.5	1.5	1.6	40
42	-	-	-	-	-	-	-	-	-	1.4	1.5	-	42
44	-	-	-	-	-	-	-	-	-	1.4	1.4	-	44

	33.4 m						37.6 m						
	10.5m			19.0m			10.5m			19.0m			
	0°	20°	40°	0°	20°	40°	0°	20°	40°	0°	20°	40°	
	t	t	t	t	t	t	t	t	t	t	t	t	
6	11.4	-	-	-	-	-	-	-	-	-	-	-	6
7	11.4	-	-	-	-	-	10.0	-	-	-	-	-	7
8	11.4	-	-	3.5	-	-	10.0	-	-	-	-	-	8
9	11.3	-	-	3.5	-	-	10.0	-	-	3.2	-	-	9
10	11.0	8.7	-	3.5	-	-	10.0	-	-	3.2	-	-	10
11	10.7	8.5	-	3.5	-	-	9.8	8.2	-	3.2	-	-	11
12	10.4	8.3	6.6	3.5	-	-	9.6	8.1	-	3.2	-	-	12
14	9.8	7.9	6.4	3.5	-	-	9.2	7.7	6.3	3.2	-	-	14
16	9.2	7.5	6.2	3.4	2.9	-	8.4	7.4	6.1	3.2	2.8	-	16
18	7.8	7.1	6.0	3.2	2.8	-	7.0	7.0	6.0	3.1	2.8	-	18
20	6.6	6.7	5.9	3.1	2.7	2.4	5.9	6.5	5.9	3.0	2.7	-	20
22	5.7	6.1	5.7	3.0	2.6	2.4	5.0	5.5	5.7	2.9	2.6	2.3	22
24	4.9	5.3	5.5	2.8	2.5	2.3	4.2	4.7	5.1	2.7	2.5	2.3	24
26	4.2	4.5	4.8	2.6	2.4	2.3	3.6	4.0	4.3	2.6	2.4	2.3	26
28	3.6	3.9	4.2	2.4	2.3	2.2	3.0	3.4	3.6	2.4	2.3	2.2	28
30	3.1	3.3	3.5	2.3	2.2	2.2	2.5	2.8	3.1	2.2	2.2	2.1	30
32	2.6	2.8	2.9	2.1	2.1	2.1	2.1	2.4	2.6	2.1	2.1	2.1	32
34	2.2	2.4	2.5	2.0	2.0	2.0	1.7	2.0	2.1	1.9	2.0	2.0	34
36	1.8	2.0	2.0	1.9	1.9	1.9	1.4	1.6	1.7	1.8	1.8	1.9	36
38	1.5	1.6	-	1.8	1.8	1.8	-	1.2	1.3	1.7	1.7	1.8	38
40	1.2	1.3	-	1.7	1.7	1.7	-	-	-	1.6	1.6	1.7	40
42	-	-	-	1.6	1.6	1.6	-	-	-	1.5	1.5	1.6	42
44	-	-	-	1.5	1.5	1.6	-	-	-	1.4	1.4	1.5	44
46	-	-	-	1.5	1.5	-	-	-	-	1.3	1.3	1.4	46
48	-	-	-	1.4	1.4	-	-	-	-	1.2	1.3	1.3	48
50	-	-	-	-	-	-	-	-	-	1.0	1.1	-	50
52	-	-	-	-	-	-	-	-	-	0.8	0.9	-	52
54	-	-	-	-	-	-	-	-	-	0.7	-	-	54

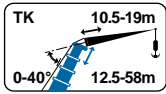


LIEBHERR LTM 1095-5.1

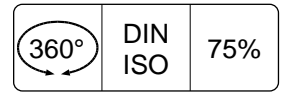
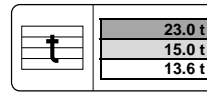
95 TON

Lifting capacities at fixed jib
Capacités à la flèche treillis fixe

Tragfähigkeiten am starren Hilfsausleger
Capaciteiten aan de vaste hulpjiek



TK



	41.8 m						46.0 m						
	10.5m			19.0m			10.5m			19.0m			
	0°	20°	40°	0°	20°	40°	0°	20°	40°	0°	20°	40°	
	t	t	t	t	t	t	t	t	t	t	t	t	
8	8.5	-	-	-	-	-	-	-	-	-	-	-	8
9	8.5	-	-	-	-	-	7.0	-	-	-	-	-	9
10	8.5	-	-	3.0	-	-	7.0	-	-	-	-	-	10
11	8.5	-	-	3.0	-	-	7.0	-	-	3.0	-	-	11
12	8.4	7.5	-	3.0	-	-	7.0	-	-	3.0	-	-	12
14	8.3	7.3	6.1	3.0	-	-	7.0	6.7	-	3.0	-	-	14
16	7.9	7.0	6.0	3.0	-	-	6.7	6.4	5.7	3.0	-	-	16
18	6.6	6.8	5.9	3.0	2.7	-	6.3	6.0	5.6	3.0	2.7	-	18
20	5.6	6.2	5.8	3.0	2.7	-	5.4	5.6	5.4	3.0	2.7	-	20
22	4.7	5.2	5.7	2.9	2.6	2.3	4.5	5.1	5.1	3.0	2.6	-	22
24	3.9	4.4	4.8	2.7	2.5	2.3	3.8	4.3	4.7	2.9	2.6	2.3	24
26	3.3	3.7	4.1	2.6	2.5	2.2	3.2	3.6	4.0	2.8	2.5	2.2	26
28	2.8	3.1	3.4	2.5	2.4	2.2	2.7	3.0	3.4	2.8	2.5	2.2	28
30	2.3	2.6	2.9	2.3	2.2	2.2	2.2	2.5	2.8	2.7	2.4	2.2	30
32	1.9	2.2	2.4	2.2	2.1	2.1	1.8	2.1	2.3	2.5	2.4	2.2	32
34	1.5	1.7	1.9	2.0	2.0	2.0	1.4	1.7	1.9	2.1	2.3	2.2	34
36	-	1.4	1.5	1.9	1.9	1.9	-	1.3	1.5	1.8	2.2	2.1	36
38	-	-	1.2	1.8	1.8	1.8	-	-	1.2	1.5	1.9	2.1	38
40	-	-	-	1.7	1.7	1.8	-	-	-	1.2	1.6	1.9	40
42	-	-	-	1.6	1.6	1.7	-	-	-	-	1.4	1.6	42
44	-	-	-	1.4	1.5	1.6	-	-	-	-	1.1	1.3	44
46	-	-	-	1.2	1.5	1.5	-	-	-	-	-	1.1	46
48	-	-	-	1.0	1.2	1.3	-	-	-	-	-	-	48
50	-	-	-	0.8	1.0	1.1	-	-	-	-	-	-	50
52	-	-	-	-	0.8	0.9	-	-	-	-	-	-	52
54	-	-	-	-	-	-	-	-	-	-	-	-	54
56	-	-	-	-	-	-	-	-	-	-	-	-	56
58	-	-	-	-	-	-	-	-	-	-	-	-	58
60	-	-	-	-	-	-	-	-	-	-	-	-	60
62	-	-	-	-	-	-	-	-	-	-	-	-	62

	50.2 m						54.4 m						
	10.5m			19.0m			10.5m			19.0m			
	0°	20°	40°	0°	20°	40°	0°	20°	40°	0°	20°	40°	
	t	t	t	t	t	t	t	t	t	t	t	t	
10	5.1	-	-	-	-	-	-	-	-	-	-	-	10
11	5.1	-	-	-	-	-	4.0	-	-	-	-	-	11
12	5.1	-	-	2.8	-	-	4.0	-	-	-	-	-	12
14	5.1	5.1	-	2.8	-	-	4.0	-	-	2.3	-	-	14
16	5.0	4.9	-	2.8	-	-	3.9	3.9	-	2.3	-	-	16
18	4.9	4.6	4.5	2.8	-	-	3.8	3.7	3.6	2.3	-	-	18
20	4.6	4.4	4.2	2.8	2.6	-	3.6	3.6	3.5	2.3	-	-	20
22	4.3	4.1	4.0	2.8	2.6	-	3.5	3.4	3.4	2.3	2.3	-	22
24	3.9	3.9	3.8	2.7	2.5	2.2	3.3	3.2	3.2	2.3	2.3	-	24
26	3.3	3.6	3.6	2.7	2.5	2.2	3.2	3.1	3.1	2.3	2.3	2.1	26
28	2.7	3.1	3.4	2.7	2.4	2.2	2.8	2.9	2.9	2.3	2.2	2.1	28
30	2.3	2.6	2.9	2.5	2.4	2.2	2.4	2.7	2.8	2.2	2.2	2.1	30
32	1.9	2.2	2.4	2.1	2.3	2.1	2.0	2.3	2.5	2.1	2.1	2.0	32
34	1.5	1.8	2.0	1.7	2.3	2.1	1.6	1.9	2.1	1.8	2.0	2.0	34
36	1.2	1.4	1.6	1.4	1.9	2.1	1.3	1.6	1.8	1.4	1.9	1.9	36
38	-	1.1	1.3	-	1.6	2.0	-	1.2	1.4	1.2	1.6	1.9	38
40	-	-	-	-	1.3	1.6	-	-	1.1	-	1.3	1.7	40
42	-	-	-	-	-	1.3	-	-	-	-	1.1	1.4	42
44	-	-	-	-	-	1.0	-	-	-	-	-	1.1	44
46	-	-	-	-	-	-	-	-	-	-	-	-	46
48	-	-	-	-	-	-	-	-	-	-	-	-	48
50	-	-	-	-	-	-	-	-	-	-	-	-	50
52	-	-	-	-	-	-	-	-	-	-	-	-	52
54	-	-	-	-	-	-	-	-	-	-	-	-	54
56	-	-	-	-	-	-	-	-	-	-	-	-	56
58	-	-	-	-	-	-	-	-	-	-	-	-	58
60	-	-	-	-	-	-	-	-	-	-	-	-	60

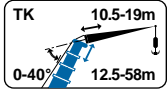


LIEBHERR LTM 1095-5.1

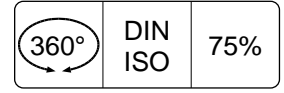
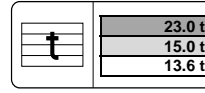
95 TON

Lifting capacities at fixed jib
Capacités à la flèche treillis fixe

Tragfähigkeiten am starren Hilfsausleger
Capaciteiten aan de vaste hulpgiëk



TK



m	58.0 m												m
	10.5m			19.0m									
	0°	20°	40°	0°	20°	40°							
t	t	t	t	t	t								
10	-	-	-	-	-	-							10
11	-	-	-	-	-	-							11
12	3.2	-	-	-	-	-							12
14	3.2	-	-	-	-	-							14
16	3.2	3.2	-	1.9	-	-							16
18	3.2	3.2	-	1.9	-	-							18
20	3.2	3.1	3.1	1.9	-	-							20
22	3.1	3.0	3.0	1.9	1.9	-							22
24	3.0	2.9	2.9	1.9	1.9	-							24
26	2.9	2.8	2.8	1.8	1.9	-							26
28	2.7	2.7	2.7	1.8	1.9	1.9							28
30	2.3	2.5	2.5	1.8	1.9	1.9							30
32	1.9	2.2	2.4	1.8	1.9	1.9							32
34	1.5	1.8	2.0	1.6	1.8	1.8							34
36	1.2	1.5	1.7	1.3	1.8	1.8							36
38	-	1.2	1.4	-	1.5	1.7							38
40	-	-	1.1	-	1.2	1.6							40
42	-	-	-	-	-	1.3							42
44	-	-	-	-	-	1.0							44
46	-	-	-	-	-	-							46
48	-	-	-	-	-	-							48
50	-	-	-	-	-	-							50
52	-	-	-	-	-	-							52
54	-	-	-	-	-	-							54
56	-	-	-	-	-	-							56
58	-	-	-	-	-	-							58
60	-	-	-	-	-	-							60



LIEBHERR LTM 1095-5.1

95 TON

Working speeds
Vitesses de travail

Arbeitsgeschwindigkeiten
Werksnelheden

Hook block/Crane hook
Unterflasche/Hakengehänge



57kN Ø 17mm Crochet-mouflé / Crochet simple
Kraanblok/Kraanhaak

Capacity / Capacité Tragfähigkeit / Capaciteit	Number of sheaves / Nombre de poulies Anzahl der Rollen / Aantal schijven	Number of lines / Nombre de brins Strangzahl / Aantal parten	Weight / Poids Gewicht / Gewicht	"B"
77.4t / 58.4t	7 / 5	15 / 11	500 kg	3.4 / 3.3 m
38.3t / 16t / 5.7t	3/1/-	7 / 3 / 1	450 / 300 / 140 kg	3.3 / 3.3 / 3.1 m

V.2011-10-20