

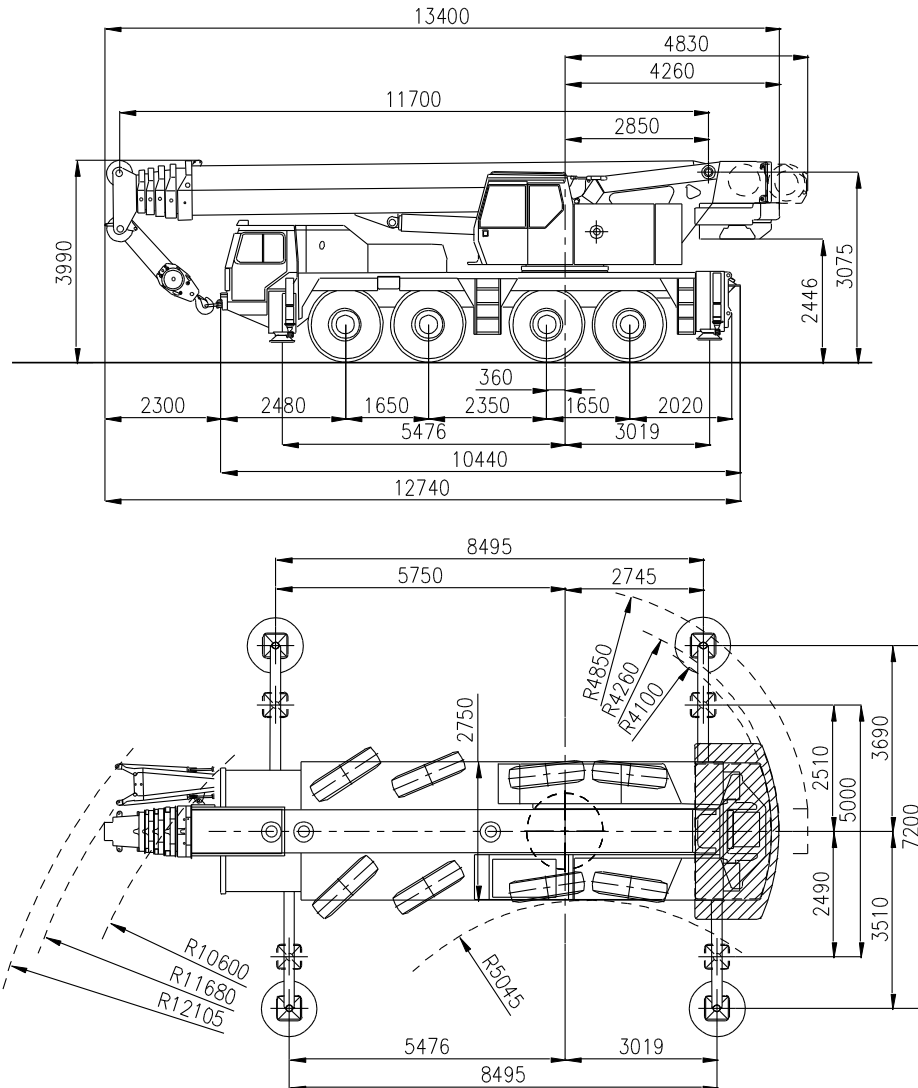


**Sarens**  
group

[www.sarens.com](http://www.sarens.com)

**LIEBHERR LTM 1090/2**

**90 TON**



Axle load / Charge par essieu / Achslast / Aslast	: 4 x 12 t	(12 t)
Total weight / Poids total / Gesamtgewicht / Totaal gewicht	: 48 t	(12 t)
Tyres / Pneus / Bereifung / Banden	: 14.00 R 25	

nothing too heavy, nothing too high





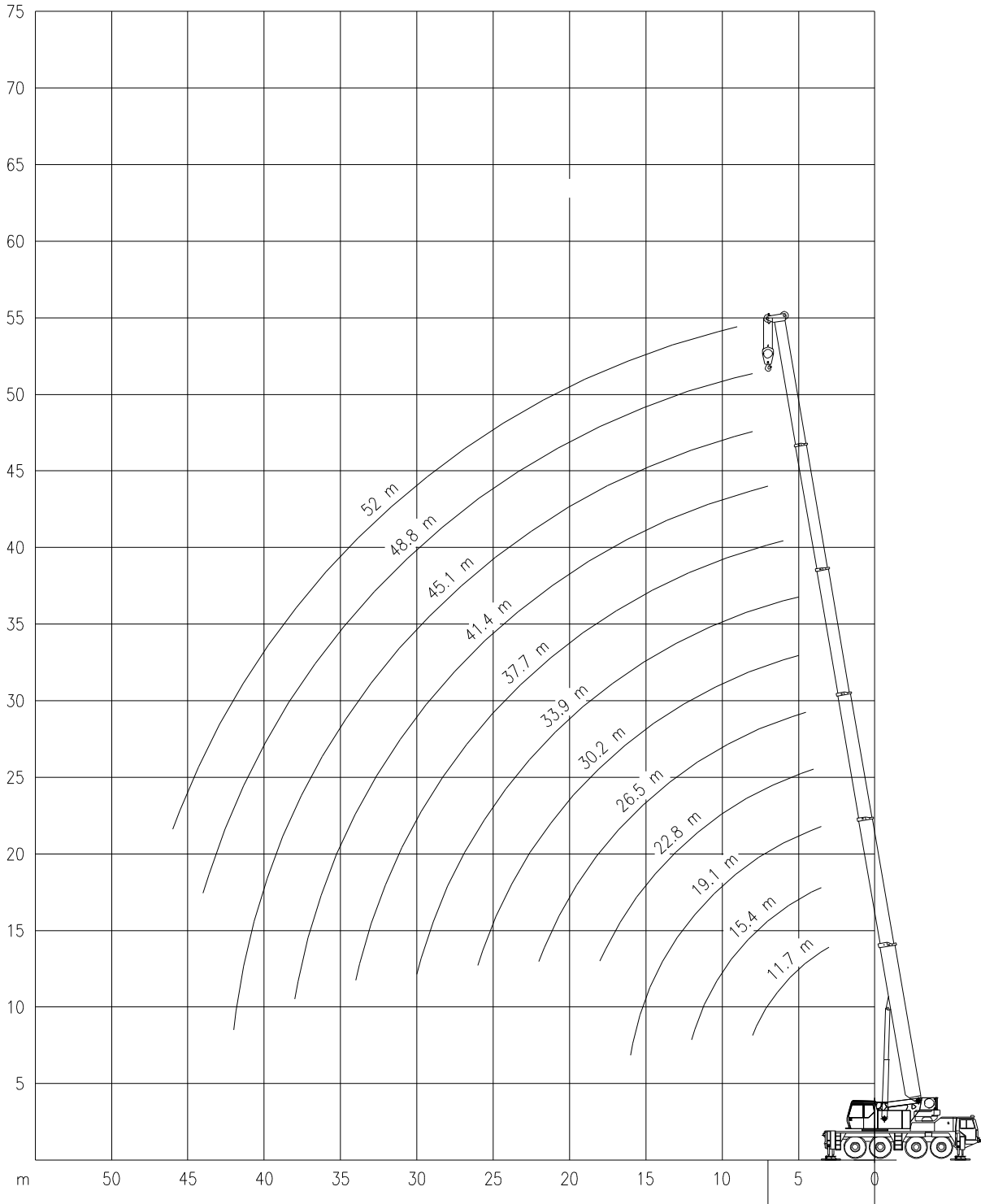
# LIEBHERR LTM 1090/2

Working ranges  
Portées

## 90 TON

Arbeitsbereiche  
Werkbereich

T



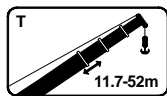


# LIEBHERR LTM 1090/2

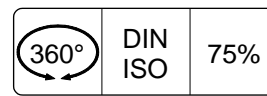
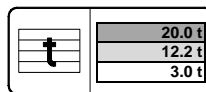
## 90 TON


Lifting capacities  
Capacités


Tragfähigkeiten  
Capaciteiten



T



	11.7 m	15.4 m	19.1 m	22.8 m	26.5 m	30.2 m	33.9 m	37.7 m	41.4 m	45.1 m	48.8 m	52.0 m
m	t	t	t	t	t	t	t	t	t	t	t	t
2.5	90.0*	-	-	-	-	-	-	-	-	-	-	-
3.0	82.0*	69.0	60.0	-	-	-	-	-	-	-	-	-
3.5	74.0*	66.0	56.0	48.5	-	-	-	-	-	-	-	-
4.0	66.0*	63.0	53.0	46.0	41.0	-	-	-	-	-	-	-
4.5	59.0*	59.0	50.0	43.5	39.0	33.5	29.0	-	-	-	-	-
5.0	49.5*	49.0	44.5	39.0	35.0	31.0	27.1	23.4	-	-	-	-
6.0	42.0*	41.5	40.5	35.0	31.5	28.3	25.1	22.1	19.1	-	-	-
7.0	36.0*	35.0	34.5	32.0	28.5	26.0	23.2	20.6	18.1	15.3	12.5	-
8.0	-	29.7	29.1	28.1	26.0	24.0	21.6	19.1	17.0	14.7	12.0	10.2
9.0	-	25.6	25.1	24.3	23.4	22.2	20.1	17.8	16.0	14.1	11.5	9.8
10.0	-	19.6	19.2	18.5	18.2	17.9	17.4	15.5	14.1	12.8	10.6	9.0
12.0	-	-	14.8	14.4	14.5	14.4	14.5	13.6	12.5	11.4	9.8	8.3
14.0	-	-	13.0	11.3	11.5	11.8	11.9	11.8	11.2	10.2	9.1	7.7
16.0	-	-	-	9.1	9.6	9.6	10.4	9.8	10.0	9.1	8.5	7.1
18.0	-	-	-	-	8.7	7.8	9.4	8.3	8.6	8.2	7.7	6.6
20.0	-	-	-	-	7.9	6.7	8.0	7.5	7.2	7.2	7.0	6.1
22.0	-	-	-	-	-	6.1	6.9	6.8	6.4	6.4	6.4	5.6
24.0	-	-	-	-	-	5.7	5.9	6.0	5.9	5.8	5.6	5.1
26.0	-	-	-	-	-	-	5.1	5.2	5.4	5.1	4.7	4.6
28.0	-	-	-	-	-	-	4.4	4.7	4.7	4.4	4.0	4.0
30.0	-	-	-	-	-	-	-	4.4	4.1	3.8	3.5	3.5
32.0	-	-	-	-	-	-	-	4.0	3.7	3.4	3.1	3.0
34.0	-	-	-	-	-	-	-	-	3.3	3.0	2.7	2.6
36.0	-	-	-	-	-	-	-	-	3.0	2.7	2.3	2.3
38.0	-	-	-	-	-	-	-	-	-	2.4	2.0	1.9
40.0	-	-	-	-	-	-	-	-	-	2.1	1.7	1.7
44.0	-	-	-	-	-	-	-	-	-	-	1.4	1.4
46.0	-	-	-	-	-	-	-	-	-	-	-	1.2

	11.7 m	15.4 m	19.1 m	22.8 m	26.5 m	30.2 m	33.9 m	37.7 m	41.4 m	45.1 m	48.8 m	52.0 m
m	t	t	t	t	t	t	t	t	t	t	t	t
2.5	80.0*	-	-	-	-	-	-	-	-	-	-	-
3.0	73.0*	69.0	60.0	-	-	-	-	-	-	-	-	-
3.5	65.0*	65.0	56.0	48.5	-	-	-	-	-	-	-	-
4.0	58.0*	55.0	48.0	42.5	39.0	-	-	-	-	-	-	-
4.5	52.0*	46.5	41.0	36.5	34.0	32.0	29.0	-	-	-	-	-
5.0	39.5*	35.0	31.5	28.3	26.6	25.4	24.6	23.4	-	-	-	-
6.0	30.5*	27.8	25.0	22.6	21.4	20.7	21.2	19.4	19.1	-	-	-
7.0	23.5*	23.4	20.6	18.5	18.6	17.2	18.7	16.6	16.3	13.7	10.6	-
8.0	-	20.1	19.1	15.4	17.1	14.9	16.1	15.5	14.0	13.7	10.6	8.8
9.0	-	16.7	17.3	13.9	15.7	13.7	14.0	13.7	12.2	12.0	10.6	8.8
10.0	-	12.2	12.7	12.1	12.2	11.9	10.8	10.9	10.7	10.0	9.3	8.8
12.0	-	-	9.8	10.4	9.6	9.5	9.4	9.2	8.6	8.0	7.3	7.1
14.0	-	-	7.7	8.2	7.6	8.1	7.9	7.4	6.9	6.4	5.8	5.6
16.0	-	-	-	6.7	6.4	6.7	6.3	6.0	5.5	5.0	4.6	4.5
18.0	-	-	-	-	5.5	5.4	5.1	4.8	4.3	3.9	3.6	3.5
20.0	-	-	-	-	4.5	4.4	4.1	3.9	3.5	3.1	2.8	2.7
22.0	-	-	-	-	-	3.8	3.4	3.2	2.8	2.4	2.1	2.1
24.0	-	-	-	-	-	3.2	2.9	2.6	2.3	1.9	1.6	1.5
26.0	-	-	-	-	-	-	2.4	2.2	1.8	1.5	-	-
28.0	-	-	-	-	-	-	2.0	1.8	1.4	-	-	-
30.0	-	-	-	-	-	-	-	1.5	1.1	-	-	-
32.0	-	-	-	-	-	-	-	1.2	-	-	-	-

\*Over rear / En arrière / Nach hinten / Over achterzijde

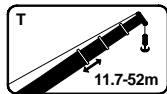


# LIEBHERR LTM 1090/2

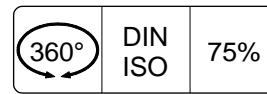
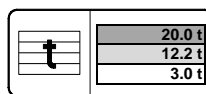
## 90 TON


Lifting capacities  
Capacités


Tragfähigkeiten  
Capaciteiten



T



	11.7 m	15.4 m	19.1 m	22.8 m	26.5 m	30.2 m	33.9 m	37.7 m	41.4 m	45.1 m	48.8 m	52.0 m
m	t	t	t	t	t	t	t	t	t	t	t	t
3.0	72.0	-	-	-	-	-	-	-	-	-	-	-
3.5	65.0	64.0	60.0	-	-	-	-	-	-	-	-	-
4.0	59.0	58.0	56.0	48.5	-	-	-	-	-	-	-	-
4.5	54.0	53.0	53.0	46.0	41.0	-	-	-	-	-	-	-
5.0	49.5	49.0	46.0	41.5	39.0	33.5	29.0	-	-	-	-	-
6.0	41.0	40.0	36.0	33.0	31.0	29.7	27.1	23.4	-	-	-	-
7.0	33.5	32.0	29.4	26.9	25.6	24.7	24.1	22.1	19.1	-	-	-
8.0	27.4	26.8	24.5	22.4	21.4	20.9	20.5	19.8	18.1	15.3	12.5	-
9.0	-	22.2	20.8	19.0	18.3	17.9	18.2	17.2	17.0	14.7	12.0	10.2
10.0	-	19.9	17.9	16.3	15.8	15.5	16.9	15.0	15.1	14.1	11.5	9.8
12.0	-	14.9	15.4	12.3	13.7	11.9	13.5	12.9	11.9	11.8	10.6	9.0
14.0	-	-	12.1	10.8	12.0	10.4	10.9	10.8	9.9	10.1	9.7	8.3
16.0	-	-	9.8	9.7	9.7	9.2	9.0	9.0	9.0	8.6	8.0	7.7
18.0	-	-	-	8.6	8.0	8.2	7.5	7.9	7.7	7.2	6.7	6.5
20.0	-	-	-	-	6.7	6.9	6.7	6.9	6.4	6.0	5.6	5.5
22.0	-	-	-	-	5.6	6.0	6.0	5.8	5.3	4.9	4.6	4.5
24.0	-	-	-	-	-	5.4	5.1	4.9	4.4	4.1	3.8	3.7
26.0	-	-	-	-	-	4.7	4.4	4.1	3.8	3.4	3.1	3.1
28.0	-	-	-	-	-	-	3.8	3.6	3.2	2.9	2.6	2.5
30.0	-	-	-	-	-	-	3.4	3.1	2.8	2.4	2.1	2.1
32.0	-	-	-	-	-	-	-	2.8	2.4	2.0	1.7	1.7
34.0	-	-	-	-	-	-	-	2.4	2.0	1.7	1.4	1.3
36.0	-	-	-	-	-	-	-	-	1.8	1.4	1.1	1.0
38.0	-	-	-	-	-	-	-	-	1.5	1.2	-	-

	11.7 m	15.4 m	19.1 m	22.8 m	26.5 m	30.2 m	33.9 m	37.7 m	41.4 m	45.1 m	48.8 m	52.0 m
m	t	t	t	t	t	t	t	t	t	t	t	t
3.0	68.0	-	-	-	-	-	-	-	-	-	-	-
3.5	55.0	46.5	39.5	-	-	-	-	-	-	-	-	-
4.0	44.0	38.0	32.5	28.4	-	-	-	-	-	-	-	-
4.5	36.0	31.5	28.4	24.0	26.1	-	-	-	-	-	-	-
5.0	30.5	28.9	27.0	20.6	23.2	21.3	19.6	-	-	-	-	-
6.0	22.8	22.1	21.2	18.7	18.4	17.7	15.8	15.2	-	-	-	-
7.0	17.8	17.6	17.0	16.9	15.0	14.6	14.3	13.4	12.5	-	-	-
8.0	13.8	14.4	14.1	14.1	12.7	12.2	12.1	11.4	10.6	9.8	8.9	-
9.0	-	12.0	11.8	11.9	11.4	11.1	10.4	9.8	9.1	8.3	7.6	7.3
10.0	-	10.0	10.1	10.3	9.8	9.6	9.0	8.5	7.8	7.2	6.5	6.3
12.0	-	7.0	7.5	7.8	7.5	7.3	6.9	6.5	5.9	5.4	4.8	4.6
14.0	-	-	5.6	6.0	5.8	5.7	5.3	5.0	4.5	4.0	3.5	3.4
16.0	-	-	4.2	4.5	4.4	4.4	4.0	3.8	3.3	2.9	2.5	2.4
18.0	-	-	-	3.6	3.4	3.4	3.1	2.9	2.5	2.0	-	-
20.0	-	-	-	-	2.7	2.7	2.4	2.2	1.8	-	-	-
22.0	-	-	-	-	2.2	2.1	1.9	1.6	-	-	-	-
24.0	-	-	-	-	-	1.7	-	-	-	-	-	-
26.0	-	-	-	-	-	1.3	-	-	-	-	-	-



# LIEBHERR LTM 1090/2

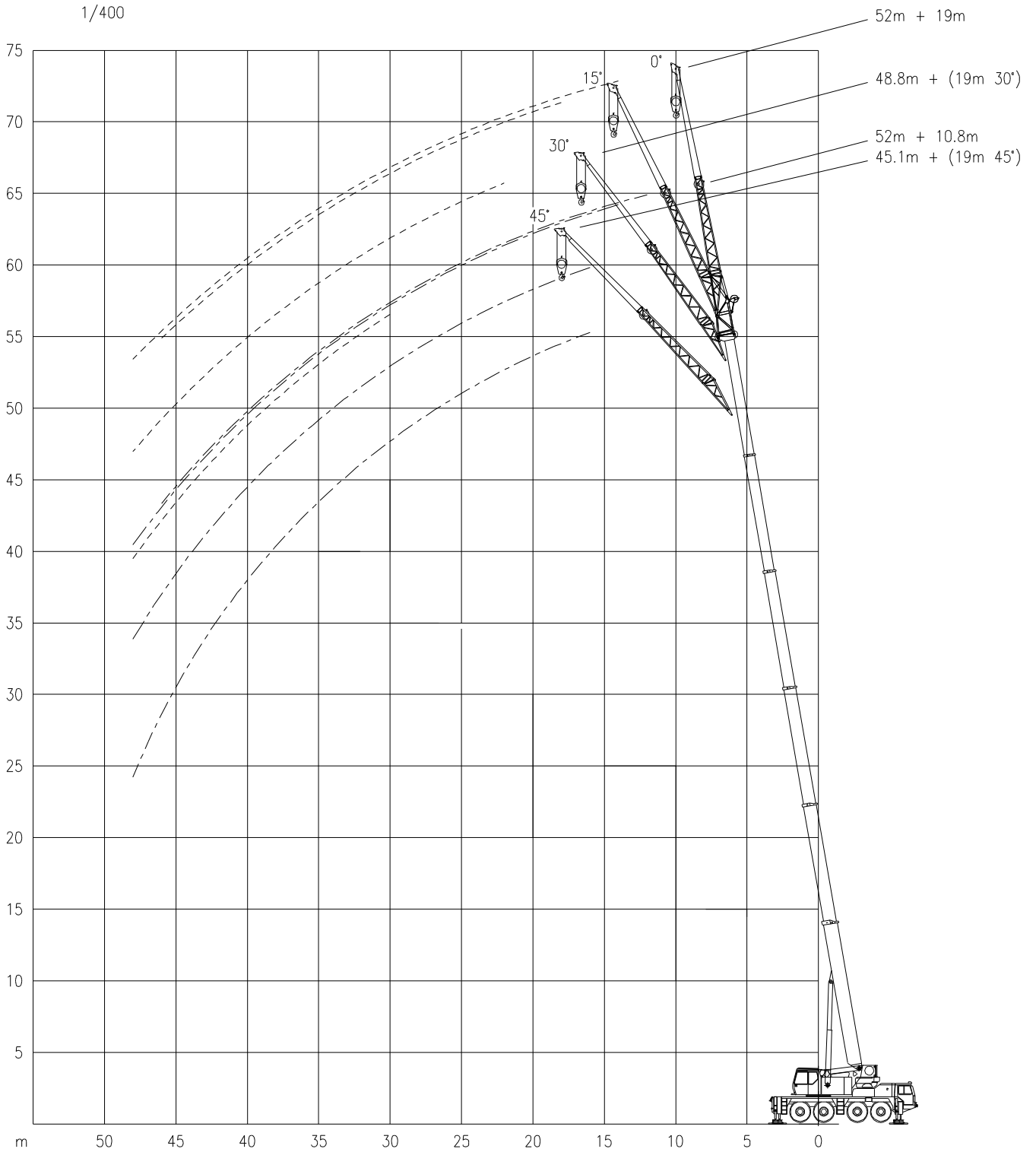
Working ranges  
Portées

## 90 TON

Arbeitsbereiche  
Werkbereich

### TK

1/400



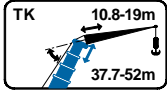


# LIEBHERR LTM 1090/2

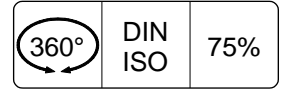
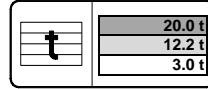
## 90 TON

Lifting capacities  
Capacités

Tragfähigkeiten  
Capacités



TK



m	37.7 m								41.4 m								45.1 m			
	10.8 m				19.0 m				10.8 m				19.0 m				10.8 m			
	0°	15°	30°	45°	0°	15°	30°	45°	0°	15°	30°	45°	0°	15°	30°	45°	0°	15°	30°	45°
8.0	10.2	-	-	-	-	-	-	-	-	-	-	-	-	-	-	-	-	-	-	-
9.0	10.0	-	-	-	4.2	-	-	-	8.3	-	-	-	-	-	-	-	-	-	-	-
10.0	9.8	-	-	-	4.2	-	-	-	8.2	-	-	-	3.9	-	-	-	7.1	-	-	-
12.0	9.5	7.1	-	-	4.1	-	-	-	8.1	6.1	-	-	3.9	-	-	-	7.0	-	-	-
14.0	9.1	6.4	4.4	-	4.0	-	-	-	7.9	5.6	3.7	-	3.8	-	-	-	6.8	4.7	-	-
16.0	8.8	5.9	4.1	3.2	3.9	3.3	-	-	7.8	5.1	3.5	2.7	3.7	3.2	-	-	6.7	4.4	3.0	2.2
18.0	8.5	5.4	3.9	3.1	3.8	3.2	-	-	7.6	4.7	3.3	2.6	3.7	3.1	-	-	6.2	4.1	2.8	2.2
20.0	7.6	5.0	3.7	3.0	3.7	3.1	2.7	-	6.9	4.3	3.1	2.5	3.6	3.0	2.4	-	5.7	3.8	2.7	2.1
22.0	6.8	4.6	3.5	2.9	3.6	3.1	2.6	2.0	6.2	4.0	3.0	2.4	3.5	3.0	2.3	-	5.3	3.5	2.5	2.0
24.0	5.9	4.3	3.3	2.8	3.5	3.0	2.5	1.9	5.6	3.8	2.8	2.4	3.4	2.9	2.2	1.6	4.9	3.3	2.4	2.0
26.0	4.8	4.0	3.1	2.7	3.4	2.9	2.3	1.8	5.0	3.5	2.7	2.3	3.3	2.8	2.0	1.5	4.6	3.1	2.3	1.9
28.0	4.0	3.8	3.0	2.6	3.3	2.9	2.2	1.7	4.2	3.3	2.6	2.3	3.2	2.7	2.0	1.5	4.2	2.9	2.2	1.8
30.0	3.5	3.5	2.9	2.6	3.2	2.8	2.1	1.7	3.6	3.1	2.5	2.2	3.1	2.6	1.9	1.4	3.6	2.7	2.1	1.8
32.0	3.0	3.2	2.8	2.5	3.1	2.7	2.0	1.6	3.1	2.9	2.4	2.2	3.0	2.4	1.8	1.3	3.2	2.6	2.1	1.8
34.0	2.7	2.8	2.7	2.4	2.9	2.5	2.0	1.5	2.8	2.8	2.4	2.1	3.0	2.3	1.7	1.2	2.9	2.4	2.0	1.7
36.0	2.6	2.4	2.5	2.3	2.5	2.4	1.9	1.5	2.7	2.5	2.3	2.1	2.6	2.2	1.6	1.1	2.8	2.3	1.9	1.7
38.0	2.5	2.2	2.1	2.2	2.2	2.3	1.8	1.4	2.6	2.2	2.2	2.1	2.3	2.1	1.5	1.1	2.5	2.2	1.8	1.7
40.0	2.3	2.1	1.9	1.8	1.9	2.2	1.7	1.3	2.5	2.1	1.9	2.0	2.0	2.0	1.5	1.0	2.2	2.0	1.8	1.6
42.0	2.2	2.0	1.9	1.7	1.7	1.9	1.7	1.3	2.2	2.1	1.9	1.7	1.7	1.9	1.4	1.0	1.9	1.9	1.7	1.6
44.0	2.1	1.9	1.8	-	1.6	1.6	1.6	1.2	1.9	2.0	1.8	1.7	1.6	1.7	1.3	1.0	1.6	1.8	1.6	1.5
46.0	-	-	-	-	1.5	1.3	1.4	1.1	1.6	1.7	1.7	1.6	1.6	1.4	1.2	0.9	1.4	1.5	1.5	1.4
48.0	-	-	-	-	1.4	1.2	1.1	1.0	1.4	1.5	1.5	-	1.5	1.2	1.1	0.9	1.1	1.2	1.3	1.2
50.0	-	-	-	-	1.4	1.2	1.0	-	-	-	-	-	1.4	1.2	1.1	0.9	0.9	1.0	1.0	-
54.0	-	-	-	-	1.3	1.1	0.9	-	-	-	-	-	1.0	1.1	1.0	-	-	-	-	-
56.0	-	-	-	-	(52m)	(52m)	(52m)	-	-	-	-	-	0.9	0.9	-	-	-	-	-	-

m	45.1 m				48.8 m								52.0 m							
	19.0 m				10.8 m				19.0 m				10.8 m				19.0 m			
	0°	15°	30°	45°	0°	15°	30°	45°	0°	15°	30°	45°	0°	15°	30°	45°	0°	15°	30°	45°
10.0	-	-	-	-	-	-	-	-	-	-	-	-	-	-	-	-	-	-	-	-
12.0	3.4	-	-	-	5.6	-	-	-	3.0	-	-	-	4.9	-	-	-	-	-	-	-
14.0	3.3	-	-	-	5.4	3.6	-	-	3.0	-	-	-	4.6	3.0	-	-	2.6	-	-	-
16.0	3.3	-	-	-	5.1	3.4	2.6	-	2.9	-	-	-	4.3	2.8	2.0	-	2.5	-	-	-
18.0	3.2	2.8	-	-	4.9	3.2	2.4	1.8	2.8	2.3	-	-	4.0	2.7	1.9	-	2.5	1.8	-	-
20.0	3.2	2.7	-	-	4.5	3.1	2.3	1.8	2.8	2.2	-	-	3.7	2.6	1.8	-	2.4	1.7	-	-
22.0	3.1	2.6	1.8	-	4.2	3.0	2.2	1.7	2.7	2.1	1.5	-	3.5	2.4	1.7	-	2.4	1.6	-	-
24.0	3.0	2.5	1.7	-	3.9	2.8	2.1	1.6	2.7	2.0	1.5	-	3.3	2.3	1.6	-	2.3	1.6	-	-
26.0	3.0	2.4	1.6	-	3.6	2.7	2.0	1.6	2.6	1.9	1.4	-	3.1	2.2	1.5	-	2.2	1.5	-	-
28.0	2.9	2.3	1.6	-	3.4	2.6	1.9	1.5	2.5	1.8	1.3	-	2.9	2.1	1.4	-	2.1	1.4	-	-
30.0	2.9	2.2	1.5	1.1	3.2	2.4	1.8	1.5	2.4	1.7	1.3	-	2.7	2.0	1.3	-	2.0	1.4	-	-
32.0	2.8	2.1	1.4	1.1	3.1	2.3	1.8	1.4	2.3	1.7	1.2	-	2.6	1.8	1.3	-	1.9	1.3	-	-
34.0	2.7	1.9	1.4	1.1	2.8	2.2	1.7	1.4	2.2	1.6	1.1	-	2.4	1.7	1.2	-	1.8	1.3	-	-
36.0	2.5	1.8	1.3	1.0	2.5	2.1	1.6	1.4	2.1	1.6	1.1	-	2.3	1.6	1.1	-	1.7	1.2	-	-
38.0	2.3	1.7	1.3	1.0	2.1	2.0	1.6	1.3	2.0	1.5	1.0	-	2.0	1.5	1.1	-	1.6	1.1	-	-
40.0	2.0	1.6	1.2	0.9	1.8	1.9	1.5	1.3	1.9	1.4	1.0	-	1.7	1.4	1.0	-	1.5	1.1	-	-
42.0	1.8	1.5	1.2	0.9	1.5	1.7	1.4	1.3	1.7	1.3	1.0	-	1.4	1.3	1.0	-	1.4	1.0	-	-
44.0	1.7	1.4	1.1	0.9	1.3	1.4	1.4	1.3	1.5	1.3	0.9	-	1.2	1.2	0.9	-	1.4	0.9	-	-
46.0	1.6	1.4	1.1	0.8	1.0	1.1	1.2	1.2	1.2	1.2	0.9	-	0.9	1.1	0.9	-	1.1	0.8	-	-
48.0	1.4	1.2	1.0	0.8	0.8	0.9	0.9	1.0	1.0	1.1	0.8	-	-	0.8	0.8	-	0.9	-	-	-
50.0	1.2	1.2	1.0	-	-	-	-	-	0.8	1.0	-	-	-	-	-	-	-	-	-	-
54.0	0.8	0.9	0.8	-	-	-	-	-	-	0.8	-	-	-	-	-	-	-	-	-	-

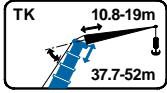


# LIEBHERR LTM 1090/2

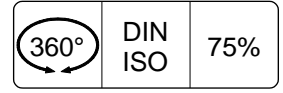
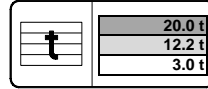
## 90 TON

Lifting capacities  
Capacités

Tragfähigkeiten  
Capacités



TK



m	37.7 m								41.4 m								45.1 m			
	10.8 m				19.0 m				10.8 m				19.0 m				10.8 m			
	0°	15°	30°	45°	0°	15°	30°	45°	0°	15°	30°	45°	0°	15°	30°	45°	0°	15°	30°	45°
8.0	10.2	-	-	-	-	-	-	-	-	-	-	-	-	-	-	-	-	-	-	-
9.0	10.0	-	-	-	4.2	-	-	-	8.3	-	-	-	-	-	-	-	-	-	-	-
10.0	9.8	-	-	-	4.2	-	-	-	8.2	-	-	-	3.9	-	-	-	-	7.1	-	-
12.0	9.5	7.1	-	-	4.1	-	-	-	8.1	6.1	-	-	3.9	-	-	-	-	7.0	-	-
14.0	9.1	6.4	4.4	-	4.0	-	-	-	7.9	5.6	3.7	-	3.8	-	-	-	-	6.8	4.7	-
16.0	8.7	5.9	4.1	3.2	3.9	3.3	-	-	7.8	5.1	3.5	2.7	3.7	3.2	-	-	-	6.7	4.4	3.0
18.0	7.2	5.4	3.9	3.1	3.8	3.2	-	-	7.2	4.7	3.3	2.6	3.7	3.1	-	-	-	6.2	4.1	2.8
20.0	6.0	5.0	3.7	3.0	3.7	3.1	2.7	-	6.0	4.3	3.1	2.5	3.6	3.0	2.4	-	-	5.7	3.8	2.7
22.0	5.0	4.6	3.5	2.9	3.6	3.1	2.6	2.0	5.1	4.0	3.0	2.4	3.5	3.0	2.3	-	-	5.0	3.5	2.5
24.0	4.2	4.3	3.3	2.8	3.5	3.0	2.5	1.9	4.3	3.8	2.8	2.4	3.4	2.9	2.2	1.6	-	4.2	3.3	2.4
26.0	3.5	3.8	3.1	2.7	3.4	2.9	2.3	1.8	3.6	3.5	2.7	2.3	3.3	2.8	2.0	1.5	-	3.6	3.1	2.3
28.0	3.3	3.1	3.0	2.6	3.2	2.9	2.2	1.7	3.3	3.3	2.6	2.3	3.2	2.7	2.0	1.5	-	3.4	2.9	2.2
30.0	3.1	2.6	2.8	2.6	2.7	2.8	2.1	1.7	3.2	2.7	2.5	2.2	2.8	2.6	1.9	1.4	-	3.0	2.7	2.1
32.0	2.9	2.4	2.3	2.4	2.3	2.7	2.0	1.6	2.9	2.5	2.4	2.2	2.3	2.4	1.8	1.3	-	2.5	2.5	2.1
34.0	2.7	2.3	2.1	1.9	2.1	2.3	2.0	1.5	2.4	2.4	2.1	2.1	2.1	2.3	1.7	1.2	-	2.1	2.3	2.0
36.0	2.5	2.2	2.0	1.9	2.0	1.9	1.9	1.5	2.1	2.3	2.0	1.8	2.0	1.9	1.6	1.1	-	1.8	2.0	1.8
38.0	2.1	2.2	2.0	1.8	1.9	1.5	1.8	1.4	1.8	1.9	2.0	1.8	1.9	1.6	1.5	1.1	-	1.5	1.6	1.7
40.0	1.8	1.9	1.9	1.8	1.8	1.4	1.5	1.3	1.5	1.6	1.7	1.7	1.7	1.4	1.5	1.0	-	1.2	1.4	1.5
42.0	1.5	1.6	1.7	1.6	1.7	1.4	1.1	1.3	1.2	1.3	1.4	1.4	1.5	1.4	1.2	1.0	-	1.0	1.1	1.2
44.0	1.3	1.4	1.4	-	1.5	1.3	1.1	0.9	1.0	1.1	1.1	1.1	1.2	1.3	1.1	1.0	-	0.8	0.9	0.9
46.0	-	-	-	-	1.3	1.3	1.1	0.8	-	0.8	0.8	0.8	1.0	1.2	1.1	0.9	-	-	-	-
48.0	-	-	-	-	1.1	1.2	1.0	0.8	-	-	-	-	0.8	1.0	1.1	0.9	-	-	-	-
50.0	-	-	-	-	0.9	1.0	1.0	-	-	-	-	-	-	-	0.9	0.9	-	-	-	-
54.0	-	-	-	-	-	0.8	0.8	-	-	-	-	-	-	-	-	-	-	-	-	-
56.0	-	-	-	-	-	-	-	-	-	-	-	-	-	-	-	-	-	-	-	-

m	45.1 m				48.8 m								52.0 m							
	19.0 m				10.8 m				19.0 m				10.8 m				19.0 m			
	0°	15°	30°	45°	0°	15°	30°	45°	0°	15°	30°	45°	0°	15°	30°	45°	0°	15°	30°	45°
12.0	3.4	-	-	-	5.6	-	-	-	3.0	-	-	-	4.9	-	-	-	-	-	-	-
14.0	3.3	-	-	-	5.4	3.6	-	-	3.0	-	-	-	4.6	3.0	-	-	-	2.6	-	-
16.0	3.3	-	-	-	5.1	3.4	2.6	-	2.9	-	-	-	4.3	2.8	2.0	-	-	2.5	-	-
18.0	3.2	2.8	-	-	4.9	3.2	2.4	1.8	2.8	2.3	-	-	4.0	2.7	1.9	-	-	2.5	1.8	-
20.0	3.2	2.7	-	-	4.5	3.1	2.3	1.8	2.8	2.2	-	-	3.7	2.6	1.8	-	-	2.4	1.7	-
22.0	3.1	2.6	1.8	-	4.2	3.0	2.2	1.7	2.7	2.1	1.5	-	3.5	2.4	1.7	-	-	2.4	1.6	-
24.0	3.0	2.5	1.7	-	3.9	2.8	2.1	1.6	2.7	2.0	1.5	-	3.3	2.3	1.6	-	-	2.3	1.6	-
26.0	3.0	2.4	1.6	-	3.6	2.7	2.0	1.6	2.6	1.9	1.4	-	3.1	2.2	1.5	-	-	2.2	1.5	-
28.0	2.9	2.3	1.6	-	3.0	2.6	1.9	1.5	2.5	1.8	1.3	-	2.9	2.1	1.4	-	-	2.1	1.4	-
30.0	2.7	2.2	1.5	1.1	2.5	2.4	1.8	1.5	2.4	1.7	1.3	-	2.4	2.0	1.3	-	-	2.0	1.4	-
32.0	2.3	2.1	1.4	1.1	2.1	2.3	1.8	1.4	2.3	1.7	1.2	-	2.0	1.8	1.3	-	-	1.9	1.3	-
34.0	2.2	1.9	1.4	1.1	1.7	1.9	1.7	1.4	1.9	1.6	1.1	-	1.6	1.7	1.2	-	-	1.8	1.3	-
36.0	2.0	1.8	1.3	1.0	1.3	1.6	1.6	1.4	1.6	1.6	1.1	-	1.2	1.4	1.1	-	-	1.4	1.2	-
38.0	1.7	1.6	1.3	1.0	1.0	1.2	1.4	1.3	1.3	1.5	1.0	-	-	1.1	1.1	-	-	1.1	1.1	-
40.0	1.4	1.4	1.2	0.9	-	-	1.1	1.1	1.0	1.3	1.0	-	-	-	1.0	-	-	-	1.1	-
42.0	1.2	1.4	1.2	0.9	-	-	-	-	-	1.0	1.0	-	-	-	-	-	-	-	0.9	-
44.0	0.9	1.2	1.0	0.9	-	-	-	-	-	-	0.9	-	-	-	-	-	-	-	-	-
46.0	-	0.9	1.0	0.8	-	-	-	-	-	-	-	-	-	-	-	-	-	-	-	-
48.0	-	-	0.9	-	-	-	-	-	-	-	-	-	-	-	-	-	-	-	-	-
50.0	-	-	-	-	-	-	-	-	-	-	-	-	-	-	-	-	-	-	-	-
54.0	-	-	-	-	-	-	-	-	-	-	-	-	-	-	-	-	-	-	-	-



# LIEBHERR LTM 1090/2

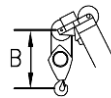
## 90 TON

**Working speeds**  
**Vitesses de travail**

**Arbeitsgeschwindigkeiten**  
**Werksnelheden**

Mechanisms Mécanismes Antriebe Aandrijvingen	Speeds Vitesses Geschwindigkeiten Snelheden	Rope diameter Diamètre du câble Seildurchmesser Kabeldiameter	Single line pull Effort sur brin simple Zulässiger Seilzug je strang Toegelaten trekkracht / part	Length of ropes Longueur des cables Länge der Seile Kabellengte
Main hoist Levage sur flèche Hubwerk 1 Hijslier 1	0 – 120 m/min	21 mm	78.8 kN	200 m
Auxiliary hoist Levage sur fléchette Hubwerk 2 Hijslier 2	0 – 120 m/min	21 mm	78.8 kN	200 m
Slewing gear Orientation Drehwerk Zwenkwerk	0 – 2 RPM			
Travel speed Vitesse sur route Fahrgeschwindigkeit Rijsnelheid	0 – 67.2/73.3 km/h			
Booming up Relever la flèche Aufwippen Optoppen	83.5° 50 sec			
Telescope Téléscoper Teleskopieren Telescoperen	11.7 - 52 m 300 sec			

### Hook Block / Crane hook Crochet mouflé / Crochet simple



### Unterflasche / Hakengehänge Kraanblok / Kraanhaak

Capacity Capacité Tragfähigkeit Capaciteit	Number of sheaves Nombre de poulies Anzahl der Rollen Aantal schijven	Number of lines Nombre de brins Strangzahl Aantal parten	Weight Poids Gewicht Gewicht	"B"
SWL 90.0 t	7	14	1000 kg	3.5 m
SWL 22.0 t	1	3	330 kg	3.0 m