

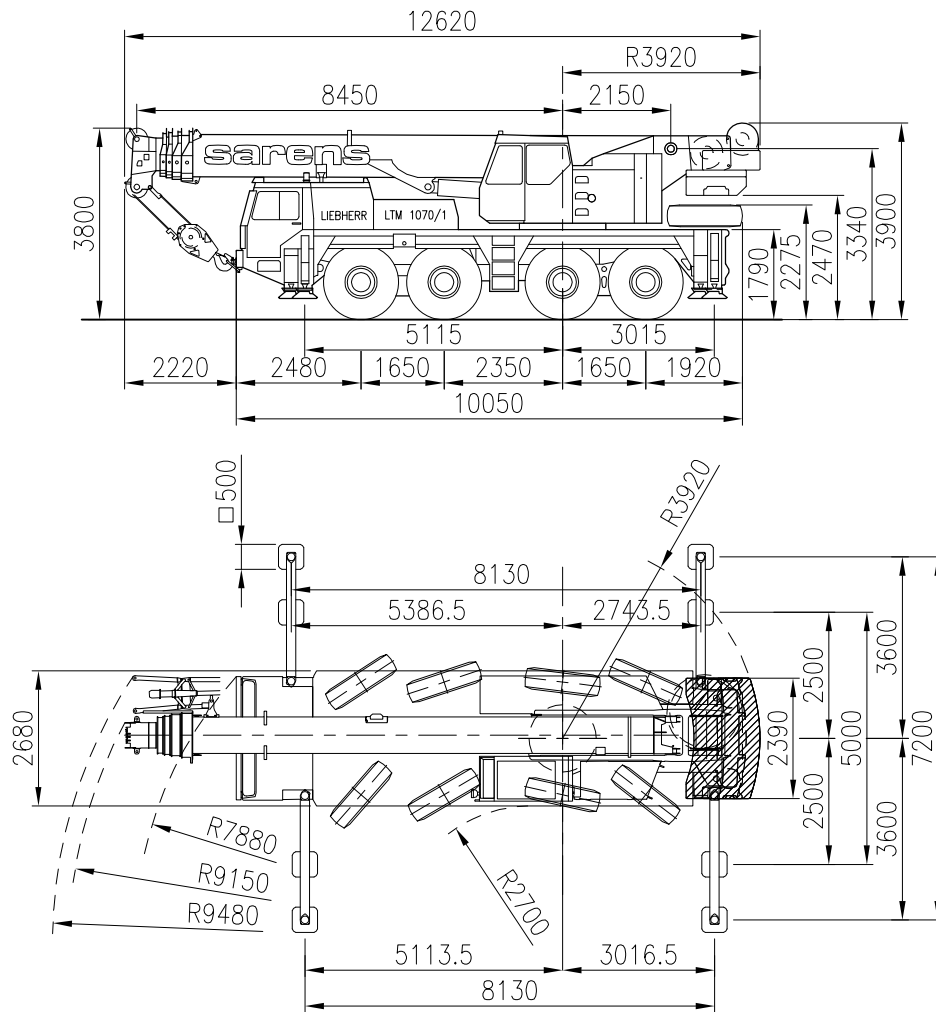


sarens
group

www.sarens.com

LIEBHERR LTM 1070/1

70 TON



Axle load / Charge par essieu / Achslast / Aslast
 Total weight / Poids total / Gesamtgewicht / Totaal gewicht
 Tyres / Pneus / Bereifung / Banden

: 4 x 12 t (☐ 0 t)
 : 48 t (☐ 0 t)
 : 14.00 R 25

nothing too heavy, nothing too high





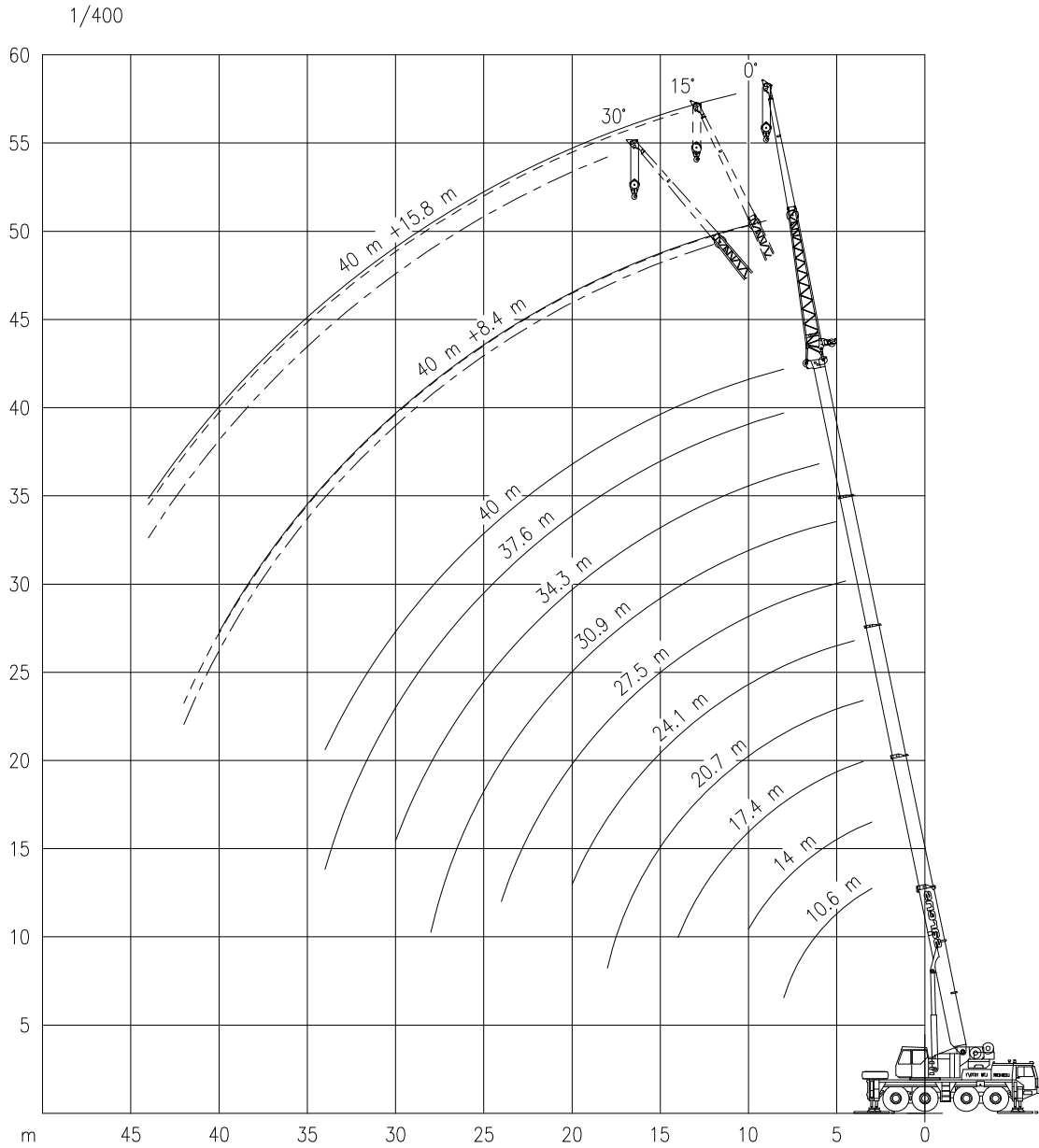
LIEBHERR LTM 1070/1

Working ranges
Portées

70 TON

Arbeitsbereiche
Werkbereich

T / TK



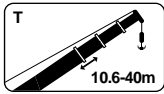


LIEBHERR LTM 1070/1

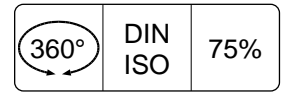
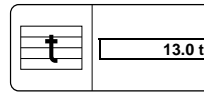
70 TON

Lifting capacities
Capacités

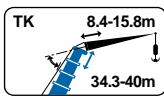
Tragfähigkeiten
Capacités



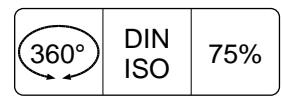
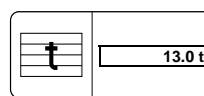
T



m	10.6 m		14.0 m		17.4 m		20.7 m		24.1 m		27.5 m		30.9 m		34.3 m		37.6 m		40.0 m		
	t	t	t	t	t	t	t	t	t	t	t	t	t	t	t	t	t	t	t	t	
3.0	60.0*	56.0	39.5	-	-	-	-	-	-	-	-	-	-	-	-	-	-	-	-	-	-
3.5	53.0*	51.0	40.5	29.7	27.5	-	-	-	-	-	-	-	-	-	-	-	-	-	-	-	-
4.0	47.5*	46.5	42.0	31.0	29.9	26.3	-	-	-	-	-	-	-	-	-	-	-	-	-	-	-
4.5	42.5*	42.5	40.5	33.0	31.5	27.1	18.0	-	-	-	-	-	-	-	-	-	-	-	-	-	-
5.0	39.5*	39.5	38.0	32.5	32.0	28.0	18.1	18.4	-	-	-	-	-	-	-	-	-	-	-	-	-
6.0	33.5*	33.5	33.5	31.5	28.0	25.2	18.4	18.7	16.6	-	-	-	-	-	-	-	-	-	-	-	-
7.0	28.5*	28.5	28.6	27.8	25.0	22.6	18.7	18.1	15.8	13.4	11.0	-	-	-	-	-	-	-	-	-	-
8.0	23.2*	23.2	24.7	23.7	22.4	20.3	18.9	16.7	14.7	13.1	10.6	-	-	-	-	-	-	-	-	-	-
9.0	-	-	21.4	20.5	20.2	18.4	17.2	15.4	13.7	12.3	10.2	-	-	-	-	-	-	-	-	-	-
10.0	-	-	18.6	18.5	17.6	16.7	15.7	14.2	12.7	11.5	9.8	-	-	-	-	-	-	-	-	-	-
12.0	-	-	-	14.2	13.2	13.3	13.3	12.2	11.1	10.2	9.0	-	-	-	-	-	-	-	-	-	-
14.0	-	-	-	11.2	10.2	10.7	10.7	10.5	9.7	9.1	7.7	-	-	-	-	-	-	-	-	-	-
16.0	-	-	-	-	8.0	9.3	8.4	8.7	8.5	8.1	6.7	-	-	-	-	-	-	-	-	-	-
18.0	-	-	-	-	6.3	7.9	6.7	7.1	7.2	7.2	5.8	-	-	-	-	-	-	-	-	-	-
20.0	-	-	-	-	-	6.6	5.4	6.3	5.9	6.1	5.1	-	-	-	-	-	-	-	-	-	-
22.0	-	-	-	-	-	-	4.3	5.5	4.8	5.0	4.4	-	-	-	-	-	-	-	-	-	-
24.0	-	-	-	-	-	-	3.5	5.0	3.9	4.1	3.8	-	-	-	-	-	-	-	-	-	-
26.0	-	-	-	-	-	-	-	4.3	3.3	3.5	3.4	-	-	-	-	-	-	-	-	-	-
28.0	-	-	-	-	-	-	-	3.7	2.8	3.0	2.9	-	-	-	-	-	-	-	-	-	-
30.0	-	-	-	-	-	-	-	-	2.4	2.6	2.5	-	-	-	-	-	-	-	-	-	-
32.0	-	-	-	-	-	-	-	-	-	2.2	2.2	-	-	-	-	-	-	-	-	-	-
34.0	-	-	-	-	-	-	-	-	-	1.9	1.9	-	-	-	-	-	-	-	-	-	-



TK



m	34.3 m						37.6 m						40.0 m								
	8.4 m			15.8 m			8.4 m			15.8 m			8.4 m			15.8 m					
	0°	15°	30°	0°	15°	30°	0°	15°	30°	0°	15°	30°	0°	15°	30°	0°	15°	30°			
8.0	9.3	-	-	-	-	-	7.5	-	-	-	-	-	-	-	-	-	-	-	-	-	-
9.0	9.3	6.3	-	4.6	-	-	7.4	5.4	-	-	-	-	6.4	-	-	-	-	-	-	-	-
10.0	9.2	6.0	-	4.6	-	-	7.3	5.1	-	3.9	-	-	6.2	4.3	-	3.5	-	-	-	-	-
12.0	8.5	5.4	3.6	4.1	3.0	-	7.0	4.6	3.1	3.9	2.9	-	5.8	4.0	2.4	3.5	-	-	-	-	-
14.0	7.7	4.9	3.4	3.7	2.8	-	6.7	4.2	2.9	3.7	2.7	-	5.4	3.6	2.3	3.4	2.6	-	-	-	-
16.0	6.9	4.4	3.2	3.4	2.7	2.3	6.1	3.8	2.7	3.4	2.6	2.2	5.0	3.3	2.1	3.3	2.4	-	-	-	-
18.0	6.1	4.0	3.0	3.1	2.6	2.2	5.5	3.5	2.5	3.2	2.5	2.1	4.3	3.0	2.0	3.1	2.3	1.7	-	-	-
20.0	5.5	3.7	2.8	2.9	2.4	2.1	4.9	3.2	2.4	3.0	2.4	2.0	3.7	2.7	1.8	2.9	2.2	1.5	-	-	-
22.0	4.8	3.4	2.7	2.8	2.3	2.0	4.4	3.0	2.3	2.8	2.3	1.9	3.3	2.4	1.7	2.7	2.1	1.4	-	-	-
24.0	3.9	3.2	2.6	2.6	2.2	1.9	4.0	2.8	2.2	2.7	2.2	1.8	3.0	2.2	1.6	2.5	2.0	1.3	-	-	-
26.0	3.3	3.0	2.5	2.5	2.1	1.9	3.4	2.6	2.1	2.6	2.2	1.7	2.7	2.1	1.5	2.2	1.8	1.2	-	-	-
28.0	2.9	2.8	2.4	2.4	2.1	1.8	2.9	2.4	2.0	2.5	2.1	1.6	2.4	1.9	1.5	2.0	1.7	1.2	-	-	-
30.0	2.4	2.6	2.3	2.3	2.0	1.8	2.5	2.3	2.0	2.4	1.9	1.5	2.2	1.8	1.4	1.8	1.5	1.1	-	-	-
32.0	2.1	2.2	2.3	2.2	1.9	1.7	2.1	2.2	1.9	2.2	1.8	1.4	2.0	1.6	1.4	1.6	1.4	1.0	-	-	-
34.0	1.8	1.9	1.9	2.1	1.8	1.7	1.8	1.9	1.9	1.9	1.7	1.4	1.8	1.5	1.3	1.4	1.3	1.0	-	-	-
36.0	1.5	1.6	1.6	2.0	1.8	1.6	1.6	1.6	1.7	1.7	1.6	1.3	1.5	1.5	1.3	1.3	1.2	0.9	-	-	-
38.0	1.3	1.3	-	1.8	1.7	1.6	1.3	1.4	1.4	1.4	1.5	1.3	1.2	1.3	1.3	1.2	1.1	0.9	-	-	-
40.0	-	-	-	1.7	1.6	1.6	1.1	1.2	1.2	1.2	1.4	1.2	1.0	1.1	1.1	1.0	1.0	0.8	-	-	-
42.0	-	-	-	1.6	1.6	1.6	-	-	-	1.0	1.1	1.2	0.8	0.9	0.9	0.9	0.9	0.8	-	-	-
44.0	-	-	-	-	-	-	-	-	-	0.8	1.0	1.0	-	-	-	0.8	0.8	0.8	-	-	-
46.0	-	-	-	-	-	-	-	-	-	-	0.8	0.8	-	-	-	-	-	-	-	-	-

*Over rear / En arrière / Nach hinten / Over achterzijde.



LIEBHERR LTM 1070/1

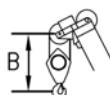
70 TON

Working speeds
Vitesses de travail

Arbeitsgeschwindigkeiten
Werksnelheden

Mechanisms Mécanismes Antriebe Aandrijvingen	Speeds Vitesses Geschwindigkeiten Snelheden	Rope diameter Diamètre du câble Seildurchmesser Kabeldiameter	Single line pull Effort sur brin simple Zulässiger Seilzug je strang Toegelaten trekkracht / part	Length of ropes Longueur des cables Länge der Seile Kabellengte
Main hoist Levage sur flèche Hubwerk 1 Hijsslier 1	0 – 120 m/min	17 mm	52 kN	170 m
Auxiliary hoist Levage sur flèche Hubwerk 2 Hijsslier 2	0 – 120 m/min	17 mm	52 kN	170 m
Slewing gear Orientation Drehwerk Zwenkwerk	0 – 2 RPM			
Travel speed Vitesse sur route Fahrgeschwindigkeit Rijsnelheid	0 – 45.6 / 70 km/h			
Booming up Relever la flèche Aufwippen Optoppen	83° 48 sec			
Telescope Téléscoper Teleskopieren Telescoperen	10.6 - 40 m 140 sec			

Hook Block / Crane hook Crochet mouflé / Crochet simple



Unterflasche / Hakengehänge Kraanblok / Kraanhaak

Capacity Capacité Tragfähigkeit Capaciteit	Number of sheaves Nombre de poulies Anzahl der Rollen Aantal schijven	Number of lines Nombre de brins Strangzahl Aantal parten	Weight Poids Gewicht Gewicht	"B"
SWL 70.0 t	7	14	450 kg	3.0 m
SWL 52.8 t	5	10	410 kg	3.0 m
SWL 34.6 t	3	7	470 kg	2.7 m
SWL 15.3 t	1	3	325 kg	2.7 m
SWL 5.2 t	-	1	110 kg	2.7 m