

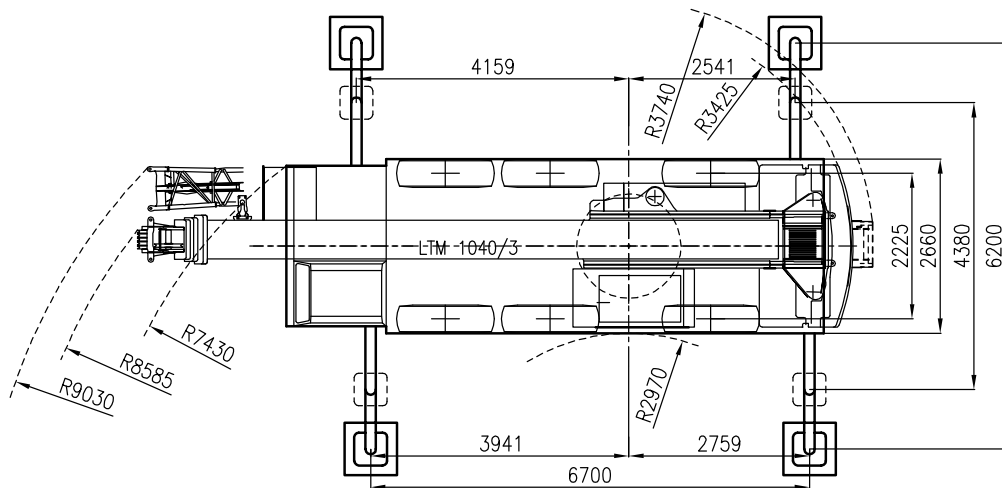
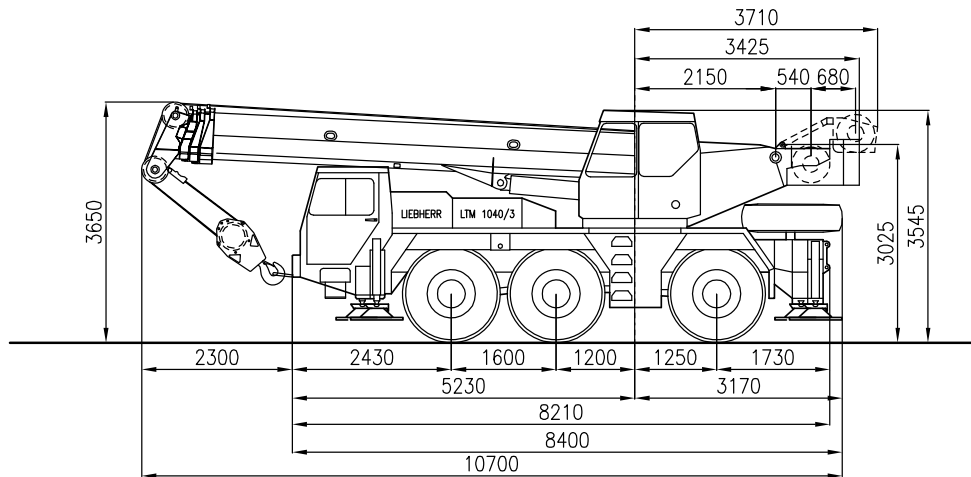


sarens
group

www.sarens.com

LIEBHERR LTM 1040/3

40 TON



Axle load / Charge par essieu / Achslast / Aslast
 Total weight / Poids total / Gesamtgewicht / Totaal gewicht
 Tyres / Pneus / Bereifung / Banden

: 3 x 12 t
 : 36 t
 : 14.00 R 25

nothing too heavy, nothing too high





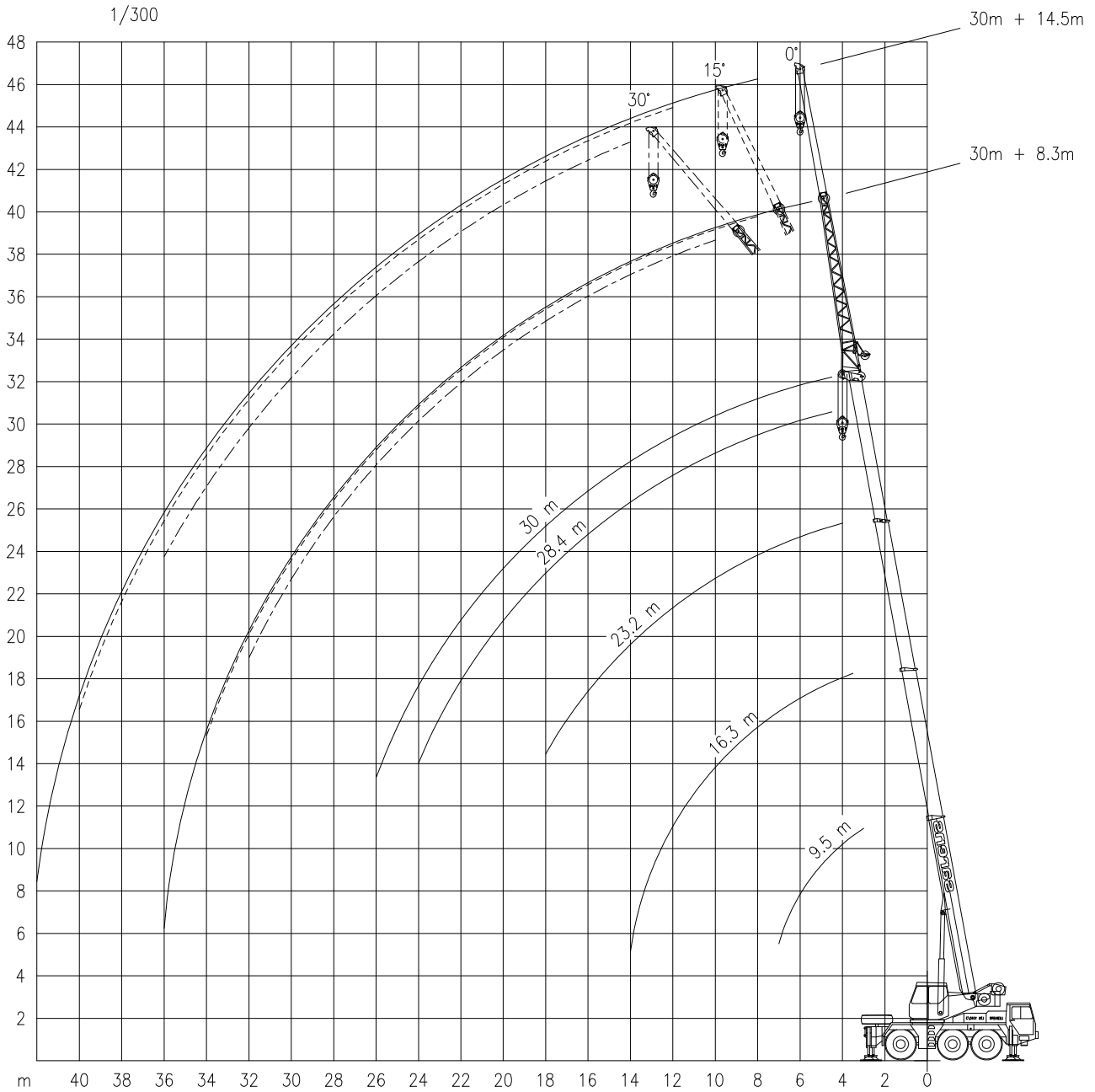
LIEBHERR LTM 1040/3

Working ranges
Portées

40 TON

Arbeitsbereiche
Werkbereich

T + TK



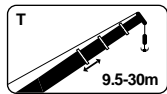


LIEBHERR LTM 1040/3

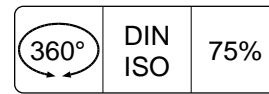
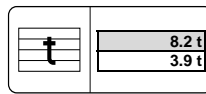
40 TON

Lifting capacities
Capacités

Tragfähigkeiten
Capaciteiten



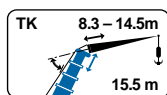
T



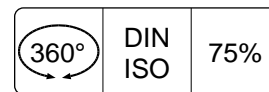
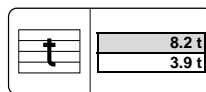
m	9.5 m !*		16.3 m		23.2 m		28.4 m		30.0 m	
	t	t	t	t	t	t	t	t	t	t
3.0	40.0	40.0	13.4	-	-	-	-	-	-	-
3.5	36.5	35.5	12.0	22.5	12.2	-	-	-	-	-
4.0	33.5	32.0	10.7	22.5	11.0	14.0	-	-	-	-
4.5	30.5	28.8	9.7	22.5	9.9	13.9	10.3	9.3	-	-
5.0	27.8	26.2	8.8	22.5	9.0	13.6	10.3	9.3	-	-
6.0	23.3	22.1	7.3	21.6	7.6	13.4	10.2	9.3	-	-
7.0	16.9	16.9	6.2	17.9	6.4	13.3	10.1	9.2	-	-
8.0	-	-	-	15.1	5.5	12.4	10.0	9.1	-	-
9.0	-	-	-	13.0	4.8	10.9	9.8	8.8	-	-
10.0	-	-	-	11.0	4.2	8.3	9.7	8.6	-	-
12.0	-	-	-	8.2	3.2	6.5	8.1	8.0	-	-
14.0	-	-	-	6.4	2.5	5.3	6.5	6.4	-	-
16.0	-	-	-	-	-	4.3	5.3	5.2	-	-
18.0	-	-	-	-	-	3.6	4.3	4.3	-	-
20.0	-	-	-	-	-	-	3.5	3.5	-	-
22.0	-	-	-	-	-	-	3.0	2.9	-	-
24.0	-	-	-	-	-	-	2.5	2.5	-	-
26.0	-	-	-	-	-	-	-	2.1	-	-

9.5 m		16.3 m		23.2 m		28.4 m		30.0 m	
t	t	t	t	t	t	t	t	t	t
38.5	12.8	-	-	-	-	-	-	-	-
34.0	11.4	22.5	11.6	-	-	-	-	-	-
30.5	10.2	22.5	10.4	14.0	-	-	-	-	-
27.6	9.2	22.5	9.4	13.9	10.3	9.3	-	-	-
24.6	8.3	22.5	8.6	13.8	10.3	9.3	-	-	-
19.6	6.9	18.5	7.2	13.6	10.2	9.3	-	-	-
15.5	5.9	14.9	6.1	13.4	10.1	9.2	-	-	-
-	-	12.4	5.1	11.3	10.0	9.1	-	-	-
-	-	10.3	4.1	9.7	9.1	8.8	-	-	-
-	-	8.6	3.4	8.4	7.9	7.8	-	-	-
-	-	6.3	2.5	6.4	6.1	6.0	-	-	-
-	-	4.8	1.9	4.9	4.8	4.7	-	-	-
-	-	-	-	3.7	3.6	3.5	-	-	-
-	-	-	-	3.0	2.9	2.8	-	-	-
-	-	-	-	2.4	2.3	2.3	-	-	-
-	-	-	-	-	1.9	1.9	-	-	-
-	-	-	-	-	1.6	1.5	-	-	-
-	-	-	-	-	-	1.3	-	-	-

!* Over rear / En arrière / Nach hinten / Over achterzijde.
On tyres / Sur pneus / Auf reifen / Op banden.



HaVSL



m	15.5 m					
	8.3 m			14.5 m		
	0°	15°	30°	0°	15°	30°
5.0	6.0	-	-	-	-	-
6.0	6.0	-	-	-	-	-
7.0	5.8	-	-	-	-	-
8.0	5.7	4.3	-	2.7	-	-
9.0	5.6	4.1	3.2	2.7	-	-
10.0	5.4	3.9	3.1	2.6	-	-
12.0	5.1	3.6	2.9	2.4	1.9	-
14.0	4.6	3.3	2.8	2.2	1.8	1.5
16.0	4.1	3.2	2.7	2.1	1.7	1.4
18.0	3.7	3.0	2.6	1.9	1.6	1.4
20.0	3.3	2.9	2.5	1.8	1.5	1.4
22.0	2.8	2.8	2.5	1.7	1.5	1.3
24.0	2.4	2.5	2.4	1.6	1.4	1.2
26.0	2.1	2.1	2.2	1.6	1.4	1.2
28.0	1.8	1.9	1.9	1.5	1.3	1.2
30.0	1.6	1.6	1.6	1.4	1.3	1.1
32.0	1.4	1.4	-	1.4	1.2	1.1
34.0	1.2	-	-	1.2	1.2	1.0
36.0	-	-	-	1.1	1.1	1.0
38.0	-	-	-	0.9	1.0	-
40.0	-	-	-	0.8	-	-
42.0	-	-	-	-	-	-

m	15.5 m					
	8.3 m			14.5 m		
	0°	15°	30°	0°	15°	30°
5.0	-	-	-	-	-	-
6.0	5.6	-	-	-	-	-
7.0	5.5	-	-	-	-	-
8.0	5.5	4.2	-	2.7	-	-
9.0	5.4	4.0	-	2.6	-	-
10.0	5.2	3.8	3.0	2.6	-	-
12.0	4.9	3.6	2.9	2.4	1.8	-
14.0	4.5	3.3	2.8	2.2	1.7	-
16.0	4.1	3.1	2.7	2.1	1.7	1.4
18.0	3.7	3.0	2.6	1.9	1.6	1.4
20.0	3.2	2.9	2.6	1.8	1.5	1.3
22.0	2.7	2.8	2.5	1.7	1.5	1.2
24.0	2.3	2.4	2.4	1.6	1.4	1.2
26.0	2.0	2.1	2.2	1.6	1.3	1.1
28.0	1.7	1.8	1.9	1.5	1.3	1.1
30.0	1.5	1.6	1.6	1.4	1.2	1.0
32.0	1.3	1.4	1.4	1.3	1.1	1.0
34.0	1.2	1.2	-	1.1	1.1	0.9
36.0	1.1	-	-	1.0	1.0	0.9
38.0	-	-	-	0.9	0.9	-
40.0	-	-	-	0.8	0.8	-
42.0	-	-	-	0.7	-	-



LIEBHERR LTM 1040/3

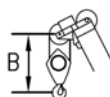
40 TON

Working speeds
Vitesses de travail

Arbeitsgeschwindigkeiten
Werksnelheden

Mechanisms Mécanismes Antriebe Aandrijvingen	Speeds Vitesses Geschwindigkeiten Snelheden	Rope diameter Diamètre du câble Seildurchmesser Kabeldiameter	Single line pull Effort sur brin simple Zulässiger Seilzug je strang Toegelaten trekkracht / part	Length of ropes Longueur des cables Länge der Seile Kabellänge
Main hoist Levage sur flèche Hubwerk 1 Hijlslier 1	0 – 104 m/min	16 mm	42 kN	150 m
Auxiliary hoist Levage sur fléchette Hubwerk 2 Hijlslier 2	0 – 104 m/min	16 mm	42 kN	150 m
Slewing gear Orientation Drehwerk Zwenkwerk	0 – 2.1 RPM			
Travel speed Vitesse sur route Fahrgeschwindigkeit Rijsnelheid	0 – 70 / 76 km/h			
Booming up Relever la flèche Aufwippen Optoppen	80° 33 sec			
Telescope Téléscoper Teleskopieren Telescoperen	9.5 – 30m 77 sec			

Hook Block / Crane hook Crochet mouflé / Crochet simple



Unterflasche / Hakengehänge Kraanblok / Kraanhaak

Capacity Capacité Tragfähigkeit Capaciteit	Number of sheaves Nombre de poulies Anzahl der Rollen Aantal schijven	Number of lines Nombre de brins Strangzahl Aantal parten	Weight Poids Gewicht Gewicht	"B"
SWL 40 t	5	10	350 kg	3.0 m
SWL 28 t	3	7	350 kg	3.0 m
SWL 12.6 t	1	3	170 kg	2.7 m
SWL 4.3 t	-	1	110 kg	2.7 m