

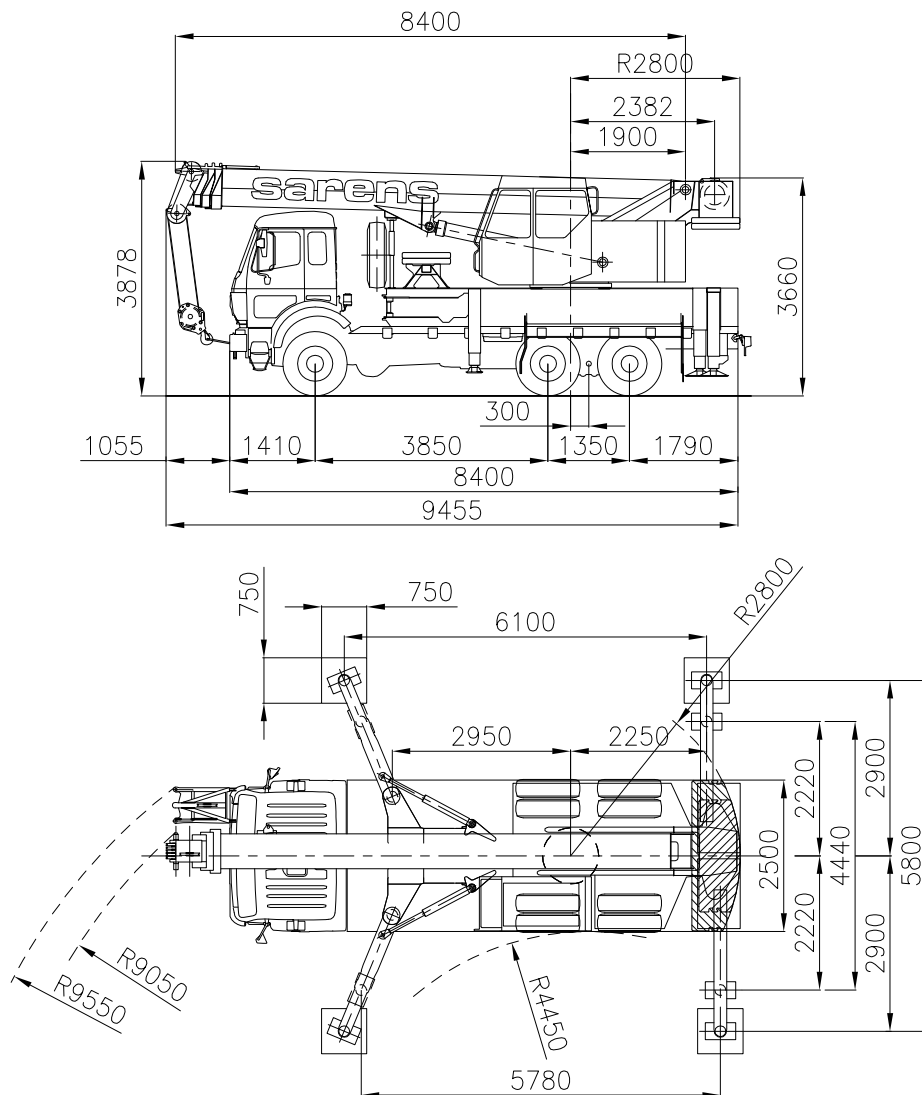


sarens
group

www.sarens.com

LIEBHERR LTF 1030/3

30 TON



Total weight / Poids total / Gesamtgewicht / Totaal gewicht
Tyres / Pneus / Bereifung / Banden

: 27.5 t
: 14.00 R 25

(3 t)

nothing too heavy, nothing too high





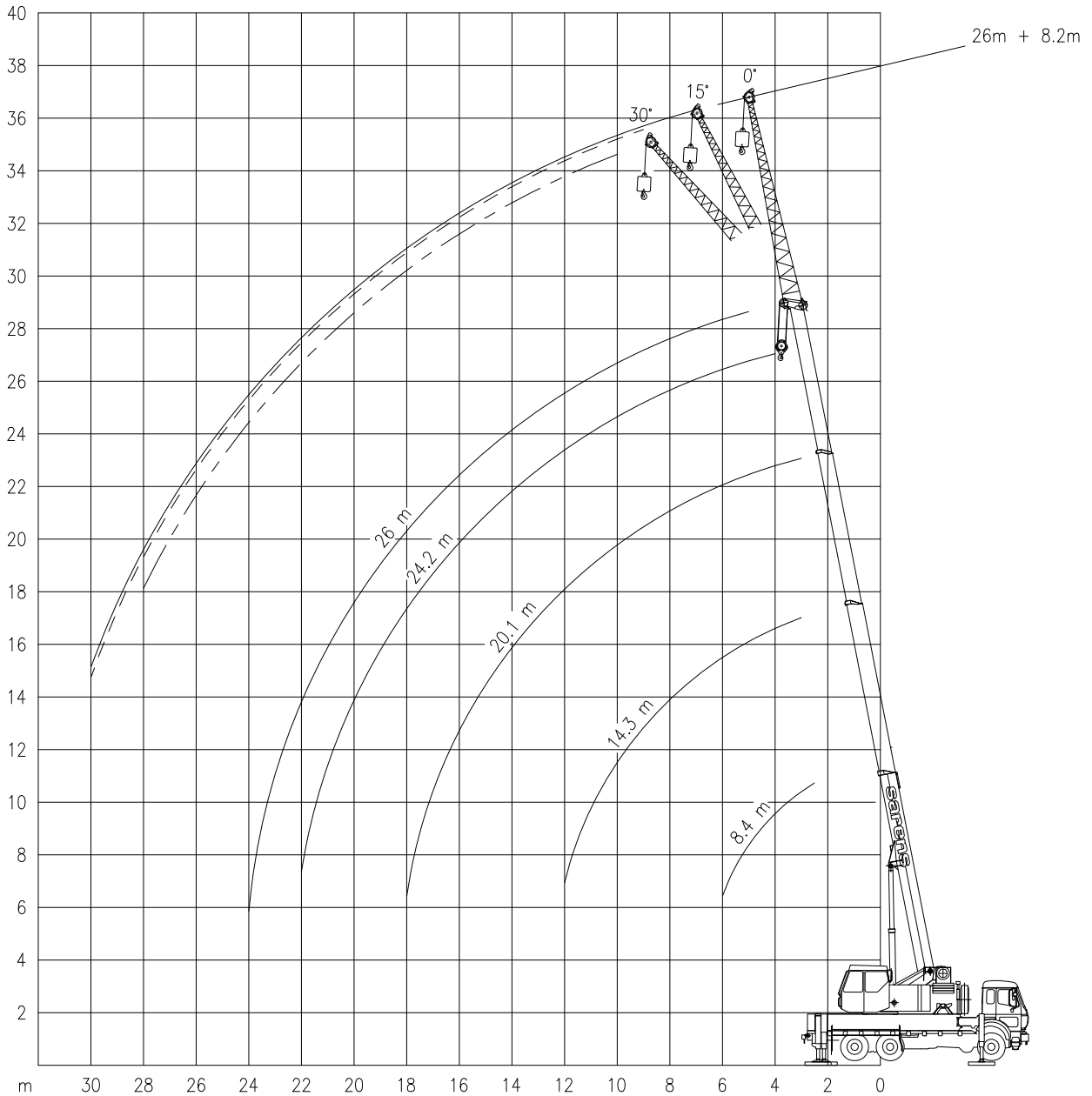
LIEBHERR LTF 1030/3

Working ranges
Portées

30 TON

Arbeitsbereiche
Werkbereich

1/250



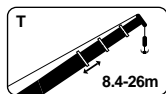


LIEBHERR LTF 1030/3

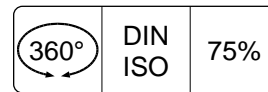
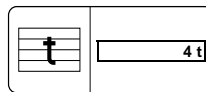
30 TON

Capacities
Capacités

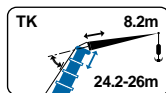
Tragfähigkeiten
Capaciteiten



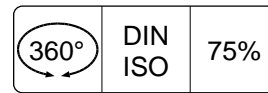
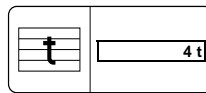
T



m	5.8m					4.4m				
	8.4 m	14.3 m	20.1 m	24.2 m	26.0 m	8.4 m	14.3 m	20.1 m	24.2 m	26.0 m
2.5	30.0	-	-	-	-	25.0	-	-	-	-
3.0	22.0	15.5	12.0	-	-	22.0	15.5	12.0	-	-
3.5	20.0	15.5	11.9	-	-	20.0	15.5	11.9	-	-
4.0	18.0	15.5	11.7	9.0	-	18.0	15.5	11.7	9.0	-
5.0	15.0	15.5	11.3	9.0	9.0	15.0	14.0	11.3	9.0	9.0
6.0	12.0	15.0	11.0	9.0	8.3	11.7	10.9	9.8	9.0	8.3
7.0	-	12.2	10.6	9.0	7.5	-	8.8	8.1	7.6	7.4
8.0	-	9.9	9.5	9.0	6.9	-	7.3	6.8	6.4	6.3
9.0	-	8.2	8.2	7.8	6.3	-	6.0	5.8	5.5	5.4
10.0	-	7.0	7.1	6.8	5.7	-	5.0	5.0	4.8	4.7
12.0	-	5.2	5.3	5.2	4.9	-	3.7	3.7	3.6	3.5
14.0	-	-	4.2	4.1	4.1	-	-	2.8	2.8	2.7
16.0	-	-	3.4	3.3	3.3	-	-	2.2	2.1	2.1
18.0	-	-	2.7	2.7	2.6	-	-	1.8	1.7	1.6
20.0	-	-	-	2.2	2.2	-	-	-	1.4	1.3
22.0	-	-	-	1.9	1.8	-	-	-	1.1	1.1
24.0	-	-	-	-	1.6	-	-	-	-	0.9



TK



m	T 24.2 m + K 8.2 m		
	0°	15°	30°
7.0	4.1	-	-
8.0	4.0	-	-
9.0	3.9	3.0	-
10.0	3.8	2.8	2.3
12.0	3.5	2.6	2.2
14.0	3.1	2.5	2.1
16.0	2.8	2.3	2.0
18.0	2.6	2.2	2.0
20.0	2.2	2.1	1.9
22.0	1.9	1.9	1.9
24.0	1.6	1.6	1.7
26.0	1.4	1.4	1.4
28.0	1.2	1.2	-
30.0	1.0	-	-

m	T 26.0 m + K 8.2 m		
	0°	15°	30°
7.0	3.6	-	-
8.0	3.4	-	-
9.0	3.2	2.5	-
10.0	3.2	2.4	1.9
12.0	2.9	2.2	1.9
14.0	2.7	2.1	1.8
16.0	2.5	2.0	1.7
18.0	2.3	1.9	1.7
20.0	2.1	1.8	1.6
22.0	1.8	1.7	1.6
24.0	1.5	1.6	1.6
26.0	1.3	1.4	1.4
28.0	1.1	1.2	1.2
30.0	1.0	1.0	-

The folding jib is not part standard equipment / La fléchette pliante n'est pas fixée standard / Die Klappspitze ist nicht standard montiert / De klapjib is niet standard gemonteerd.



LIEBHERR LTF 1030/3

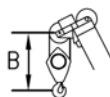
30 TON

Working speeds
Vitesses de travail

Arbeitsgeschwindigkeiten
Werksnelheden

Mechanisms Mécanismes Antriebe Aandrijvingen	Speeds Vitesses Geschwindigkeiten Snelheden	Rope diameter Diamètre du câble Seildurchmesser Kabeldiameter	Single line pull Effort sur brin simple Zulässiger Seilzug je strang Toegelaten trekkracht / part	Length of ropes Longueur des cables Länge der Seile Kabellengte
Main hoist Levage sur flèche Hubwerk 1 Hijslier 1	0 - 130 m/min	13 mm	27 kN	145 m
Slewing gear Orientation Drehwerk Zwenkwerk	0 - 2.5 RPM			
Travel speed Vitesse sur route Fahrgeschwindigkeit Rijsnelheid	0 - 41 / 71 km/h			
Booming up Relever la flèche Aufwippen Optoppen	80° 22 s			
Telescope Télescoper Teleskopieren Telescoperen	8.4 - 26 m 60 s			

Hook Block / Crane hook Crochet mouflé / Crochet simple



Unterflasche / Hakengehänge Kraanblok / Kraanhaak

Capacity Capacité Tragfähigkeit Capaciteit	Number of sheaves Nombre de poulies Anzahl der Rollen Aantal schijven	Number of lines Nombre de brins Strangzahl Aantal parten	Weight Poids Gewicht Gewicht	"B"
SWL 18.0 t	3	7	160 kg	2.5 m
SWL 2.7 t	-	1	60 kg	2.5 m