

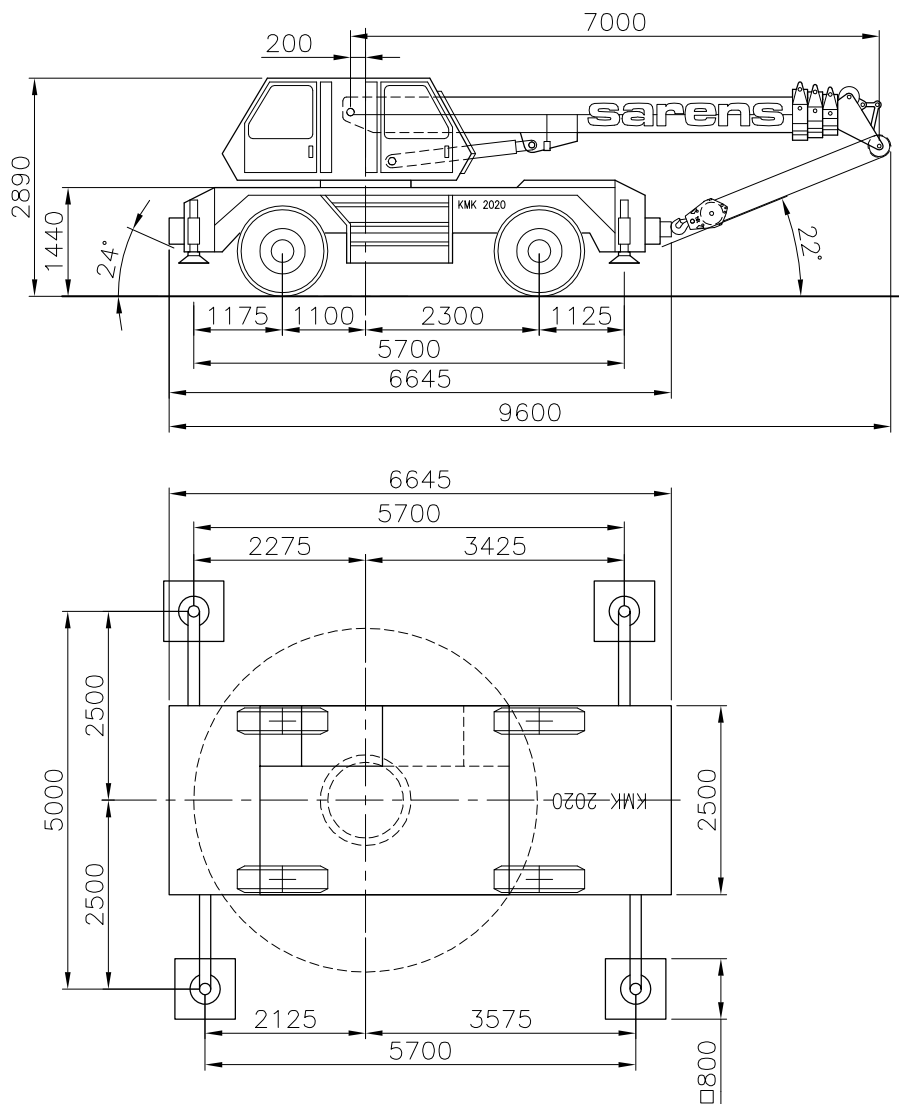


sarens
group

www.sarens.com

KRUPP KMK 2020

20 TON



Banden / Pneus / Tyres / Reifen : 14.00 R 20
Aslast / Charge par essieu / Axle load / Achslast : 2 x 11 t
Totaal gewicht / Poids total / Total weight / Gesamtgewicht : 22 t

nothing too heavy, nothing too high





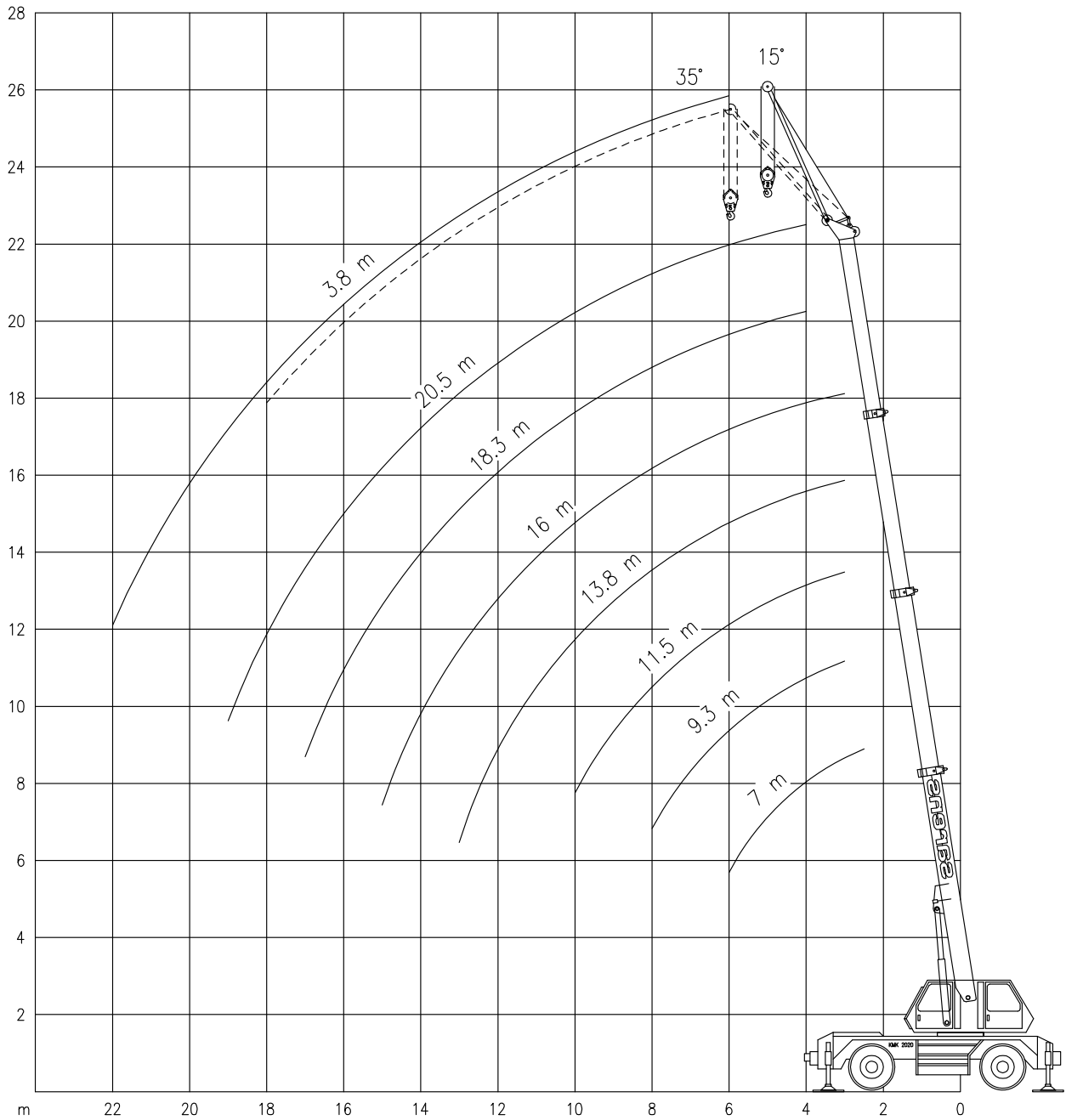
KRUPP KMK 2020

Working ranges
Portées

20 TON

Arbeitsbereiche
Werkbereich

T + TK



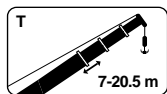


KRUPP KMK 2020

20 TON

Lifting capacities
Capacités

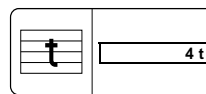
Tragfähigkeiten
Capacités



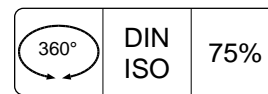
T



5m



4 t

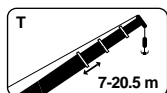


360°

DIN
ISO

75%

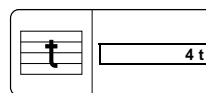
m	7.0 m	<>	9.3 m	<>	11.5 m	<>	13.8 m	<>	16.0 m	<>	18.3 m	<>	20.5 m
	t	t	t	t	t	t	t	t	t	t	t	t	t
2.5	20.0	-	-	-	-	-	-	-	-	-	-	-	-
3.0	16.8	16.5	16.5	14.5	14.5	14.5	14.5	14.5	14.5	-	-	-	-
4.0	13.8	13.6	13.6	12.9	13.2	12.4	12.4	12.1	12.1	11.0	11.0	9.0	9.0
5.0	11.1	11.0	11.0	10.7	11.1	10.2	10.3	9.9	10.0	9.7	9.8	8.5	8.5
6.0	9.0	8.8	8.8	8.7	9.1	8.7	8.8	8.5	8.5	8.2	8.4	7.7	7.7
7.0	-	6.9	6.9	6.8	7.2	6.8	6.9	6.9	7.0	6.9	7.1	7.0	7.0
8.0	-	5.5	5.5	5.4	5.8	5.4	5.5	5.5	5.6	5.5	5.7	5.7	5.8
9.0	-	-	-	4.4	4.8	4.4	4.5	4.5	4.9	4.5	4.7	4.7	4.8
10.0	-	-	-	3.7	4.1	3.7	3.8	3.8	4.2	3.8	3.9	3.9	4.0
11.0	-	-	-	-	-	3.1	3.2	3.2	3.6	3.2	3.3	3.3	3.4
12.0	-	-	-	-	-	2.6	2.7	2.7	3.1	2.7	2.9	2.9	2.9
13.0	-	-	-	-	-	2.2	2.3	2.3	2.8	2.3	2.5	2.5	2.6
14.0	-	-	-	-	-	-	-	2.0	2.4	2.0	2.2	2.2	2.2
15.0	-	-	-	-	-	-	-	1.7	2.2	1.7	1.9	1.9	2.0
16.0	-	-	-	-	-	-	-	-	-	1.5	1.6	1.6	1.7
17.0	-	-	-	-	-	-	-	-	-	1.3	1.4	1.4	1.5
18.0	-	-	-	-	-	-	-	-	-	-	-	1.3	1.3
19.0	-	-	-	-	-	-	-	-	-	-	-	1.1	1.2



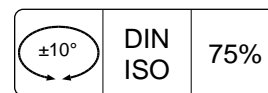
T



5m



4 t

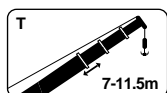


±10°

DIN
ISO

75%

m	7.0 m	<>	9.3 m	<>	11.5 m	<>	13.8 m	<>	16.0 m	<>	18.3 m	<>	20.5 m
	t	t	t	t	t	t	t	t	t	t	t	t	t
2.5	20.0	-	-	-	-	-	-	-	-	-	-	-	-
3.0	18.4	16.5	16.5	14.5	14.5	14.5	14.5	14.5	14.5	-	-	-	-
4.0	14.4	13.7	13.7	12.9	13.2	12.4	12.4	12.1	12.1	11.0	11.0	9.0	9.0
5.0	11.1	11.0	11.0	10.7	11.1	10.2	10.3	9.9	10.0	9.7	9.8	8.5	8.5
6.0	9.0	8.8	8.8	8.7	9.1	8.7	8.8	8.5	8.5	8.2	8.4	7.7	7.7
7.0	-	7.3	7.3	7.2	7.5	7.2	7.3	7.3	7.3	7.2	7.3	7.0	7.0
8.0	-	6.2	6.2	6.1	6.4	6.1	6.2	6.2	6.2	6.2	6.3	6.3	6.3
9.0	-	-	-	5.3	5.6	5.3	5.3	5.3	5.4	5.3	5.5	5.5	5.5
10.0	-	-	-	4.6	4.9	4.6	4.7	4.7	4.7	4.7	4.8	4.8	4.8
11.0	-	-	-	-	-	4.0	4.1	4.1	4.1	4.1	4.2	4.2	4.3
12.0	-	-	-	-	-	3.6	3.6	3.6	3.7	3.6	3.8	3.8	3.8
13.0	-	-	-	-	-	3.2	3.2	3.2	3.4	3.2	3.4	3.4	3.4
14.0	-	-	-	-	-	-	-	2.9	3.2	2.9	3.0	3.0	3.1
15.0	-	-	-	-	-	-	-	2.6	3.0	2.6	2.8	2.8	2.8
16.0	-	-	-	-	-	-	-	-	-	2.4	2.5	2.5	2.6
17.0	-	-	-	-	-	-	-	-	-	2.1	2.3	2.3	2.3
18.0	-	-	-	-	-	-	-	-	-	-	-	2.0	2.1
19.0	-	-	-	-	-	-	-	-	-	-	-	1.8	1.9



T



4 t



360°

DIN
ISO

75%

m	7.0 m		11.5 m	
	360°	0°	360°	0°
	t	t	t	t
2.5	6.0	6.0	6.0	6.0
3.0	5.3	6.0	5.3	6.0
4.0	3.9	6.0	3.9	6.0
5.0	2.9	6.0	2.9	5.5
6.0	2.2	4.5	2.2	4.5
7.0	-	-	1.7	3.6
8.0	-	-	1.1	3.0
9.0	-	-	0.8	2.5
10.0	-	-	-	2.1

<> = Intermediate values - telescope without loads / Valeurs intermédiaires - telescope avant prise en charge / Zwischenwerten - Teleskopieren vor Lastaufnahme / Tussenwaarden - telescoperen voor lastopname.

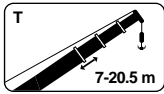


KRUPP KMK 2020

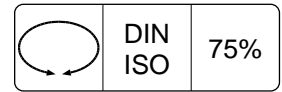
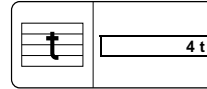
20 TON

Lifting capacities
Capacités

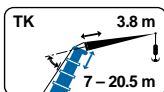
Tragfähigkeiten
Capaciteiten



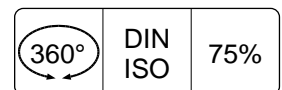
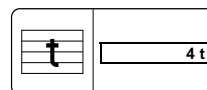
T (Tele)



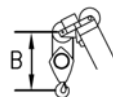
m	7.0 m – 9.3 m		9.3 m – 11.5 m		11.5 m – 13.8 m		13.8 m – 16.0 m		16.0 m – 18.3 m		18.3 m – 20.5 m	
	360°	±10°	360°	±10°	360°	±10°	360°	±10°	360°	±10°	360°	±10°
3.0	12.0	12.0	10.0	10.0	12.0	12.0	10.0	10.0	-	-	-	-
4.0	12.0	12.0	10.0	10.0	12.0	12.0	10.0	10.0	7.0	7.0	6.0	6.0
5.0	11.0	11.0	10.0	10.0	10.2	10.2	9.9	9.9	7.0	7.0	6.0	6.0
6.0	8.8	8.8	8.7	8.7	8.7	8.7	8.5	8.5	7.0	7.0	6.0	6.0
7.0	6.9	7.3	6.8	7.2	6.8	7.2	6.9	7.3	6.9	7.0	6.0	6.0
8.0	5.5	6.2	5.4	6.1	5.4	6.1	5.5	6.2	5.5	6.2	5.7	6.0
9.0	-	-	4.4	5.3	4.4	5.3	4.5	5.3	4.5	5.3	4.7	5.5
10.0	-	-	3.7	4.6	3.7	4.6	3.8	4.7	3.8	4.7	3.9	4.8
11.0	-	-	-	-	3.1	4.0	3.2	4.1	3.2	4.1	3.3	4.2
12.0	-	-	-	-	2.6	3.6	2.7	3.6	2.7	3.6	2.9	3.8
13.0	-	-	-	-	2.2	3.2	2.3	3.2	2.3	3.2	2.5	3.4
14.0	-	-	-	-	-	-	2.0	2.9	2.0	2.9	2.2	3.0
15.0	-	-	-	-	-	-	1.7	2.6	1.7	2.6	1.9	2.8
16.0	-	-	-	-	-	-	-	-	1.5	2.4	1.6	2.5
17.0	-	-	-	-	-	-	-	-	1.3	2.1	1.4	2.3
18.0	-	-	-	-	-	-	-	-	-	-	1.3	2.0
19.0	-	-	-	-	-	-	-	-	-	-	1.1	1.8



TK



m	7.0 m + 3.8 m			11.5 m + 3.8 m			16.0 m + 3.8 m			20.5 m + 3.8 m		
	0°	15°	35°	0°	15°	35°	0°	15°	35°	0°	15°	35°
3.0	-	4.5	-	-	-	-	-	-	-	-	-	-
4.0	-	4.0	2.9	-	4.5	-	-	-	-	-	-	-
5.0	-	3.5	2.7	-	4.1	2.8	-	4.4	2.8	-	-	-
6.0	-	3.0	2.4	-	3.6	2.6	-	4.0	2.7	-	4.0	2.7
7.0	-	2.7	2.2	-	3.3	2.5	-	3.7	2.6	-	3.8	2.6
8.0	-	2.4	2.1	-	3.0	2.3	-	3.4	2.5	-	3.6	2.5
9.0	-	2.2	-	-	2.8	2.2	-	3.2	2.4	-	3.4	2.5
10.0	-	2.1	-	-	2.5	2.1	-	3.0	2.3	-	3.2	2.4
11.0	-	-	-	-	2.4	2.1	-	2.8	2.2	-	3.0	2.3
12.0	-	-	-	-	2.2	-	-	2.6	2.2	-	2.9	2.2
13.0	-	-	-	-	2.2	-	-	2.4	2.1	-	2.7	2.2
14.0	-	-	-	-	2.1	-	-	2.3	2.1	-	2.4	2.1
15.0	-	-	-	-	-	-	-	2.0	-	-	2.1	2.1
16.0	-	-	-	-	-	-	-	1.8	-	-	1.9	1.9
17.0	-	-	-	-	-	-	-	1.6	-	-	1.7	1.7
18.0	-	-	-	-	-	-	-	1.4	-	-	1.5	1.5
19.0	-	-	-	-	-	-	-	-	-	-	1.3	-
20.0	-	-	-	-	-	-	-	-	-	-	1.2	-
21.0	-	-	-	-	-	-	-	-	-	-	1.1	-
22.0	-	-	-	-	-	-	-	-	-	-	0.9	-



Hook block/Crane hook
Crochet-mouflé/Crochet simple

Unterflasche/Hakengehänge
Kraanblok/Kraanhaak

Capacity / Capaciteit Tragfähigkeit / Capaciteit	Number of sheaves / Nombre de poulies Anzahl der Rollen / Aantal schijven	Number of lines / Nombre de brins Strangzahl / Aantal parten	Weight / Poids Gewicht / Gewicht	"B"
SWL 16.0 t	3	7	250 kg	2.55 m
SWL 7.5 t	1	3	120 kg	2.40 m