

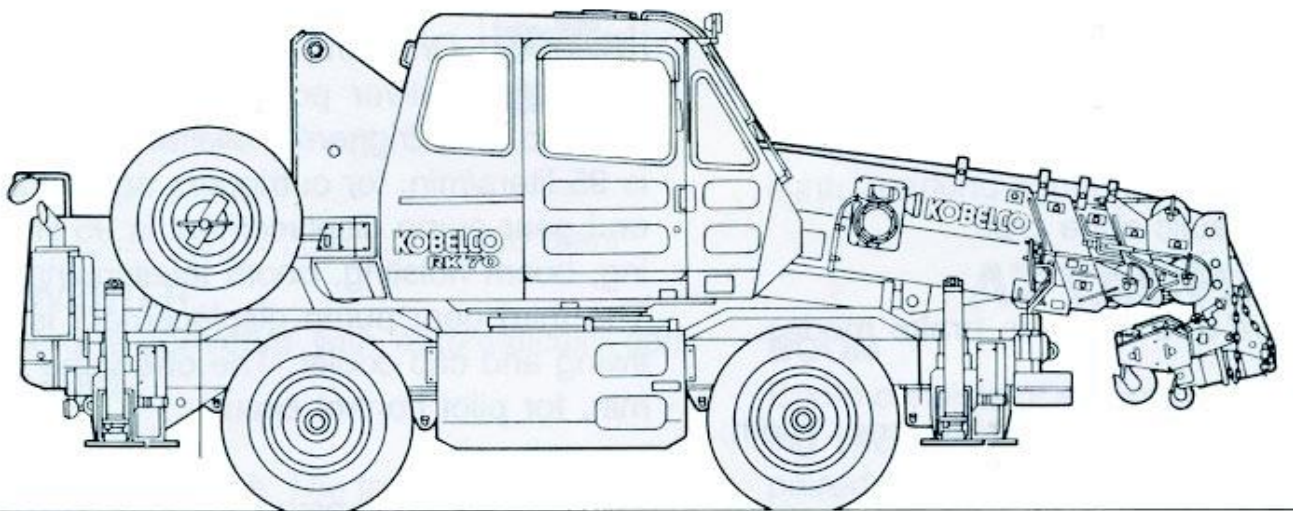


sarens
group

www.sarens.com

Kobelco RK 70

7 ton



nothing too heavy, nothing too high



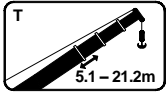


Kobelco RK 70

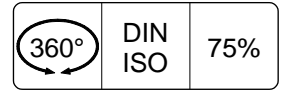
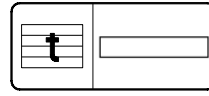
Capacities
Capacités

7 ton

Tragfähigkeiten
Capacités



T



m	5.1 m	8.4 m	11.6 m	16.4 m	21.2 m
	t	t	t	t	t
1.0	7.00	4.90	-	-	-
1.5	7.00	4.90	4.90	-	-
2.0	7.00	4.90	4.90	-	-
2.5	7.00	4.90	4.90	3.90	-
3.0	6.10	4.90	4.90	3.90	2.00
3.5	5.30	4.90	4.90	3.90	2.00
4.0	4.90	4.50	4.50	3.60	2.00
4.5	(3.7m)	3.85	3.87	3.30	2.00
5.0	-	3.33	3.37	3.05	2.00
5.5	-	2.95	2.97	2.82	1.85
6.0	-	2.62	2.65	2.56	1.70
7.0	-	2.15	2.14	2.15	1.50
8.0	-	(6.9m)	1.70	1.84	1.40
9.0	-	-	1.40	1.60	1.23
10.0	-	-	1.20	1.40	1.09
11.0	-	-	1.16	1.20	0.98
12.0	-	-	(10.2m)	1.02	0.89
13.0	-	-	-	0.85	0.82
14.0	-	-	-	0.69	0.75
15.0	-	-	-	0.55	0.69
16.0	-	-	-	-	0.59
17.0	-	-	-	-	0.51
18.0	-	-	-	-	0.43
19.0	-	-	-	-	0.36
20.0	-	-	-	-	0.35
21.0	-	-	-	-	(19.8m)

nothing too heavy, nothing too high



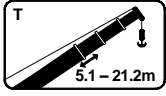


Kobelco RK 70

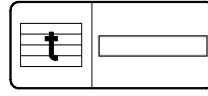
Capacities
Capacités

7 ton

Tragfähigkeiten
Capacités

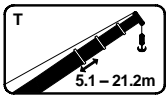


T

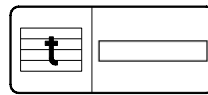


Over Side	DIN ISO	75%
-----------	---------	-----

m	5.1 m	8.4 m	11.6 m	16.4 m	21.2 m
	t	t	t	t	t
1.0	7.00	4.90	-	-	-
1.5	7.00	4.90	4.90	-	-
2.0	7.00	4.90	4.90	-	-
2.5	7.00	4.90	4.90	3.90	-
3.0	6.10	4.90	4.90	3.90	2.00
3.5	5.30	4.90	4.90	3.90	2.00
4.0	4.90	4.50	4.50	3.60	2.00
4.5	(3.7m)	3.85	3.87	3.30	2.00
5.0	-	3.33	3.37	3.05	2.00
5.5	-	2.85	2.97	2.82	1.85
6.0	-	2.46	2.52	2.56	1.70
7.0	-	1.89	1.87	2.03	1.50
8.0	-	(6.9m)	1.40	1.57	1.33
9.0	-	-	1.02	1.22	1.18
10.0	-	-	0.78	0.96	1.04
11.0	-	-	0.76	0.75	0.91
12.0	-	-	(10.2m)	0.57	0.78
13.0	-	-	-	0.44	0.65
14.0	-	-	-	0.34	0.53
15.0	-	-	-	0.27	0.42
16.0	-	-	-	-	0.33
17.0	-	-	-	-	0.26
18.0	-	-	-	-	0.19
19.0	-	-	-	-	0.13
Min Angle	-	-	-	-	17°



T



Over Side	DIN ISO	75%
-----------	---------	-----

m	5.1 m	8.4 m	11.6 m	16.4 m	21.2 m
	t	t	t	t	t
1.0	7.00	4.90	-	-	-
1.5	7.00	4.90	4.90	-	-
2.0	7.00	4.90	4.90	-	-
2.5	7.00	4.90	4.90	3.90	-
3.0	6.10	4.90	4.10	3.90	2.00
3.5	4.40	4.07	3.60	3.90	2.00
4.0	4.20	3.26	2.98	3.60	2.00
4.5	(3.7m)	2.63	2.40	2.90	2.00
5.0	-	2.10	1.98	2.43	2.00
5.5	-	1.71	1.64	2.05	1.85
6.0	-	1.40	1.36	1.76	1.70
7.0	-	1.07	1.00	1.31	1.30
8.0	-	(6.9m)	0.66	0.96	0.97
9.0	-	-	0.41	0.70	0.76
10.0	-	-	0.23	0.50	0.60
11.0	-	-	0.21	0.34	0.47
12.0	-	-	(10.2m)	0.21	0.35
13.0	-	-	-	-	0.26
14.0	-	-	-	-	0.17
Min Angle	-	-	-	37°	45°

nothing too heavy, nothing too high

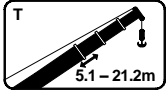


Kobelco RK 70

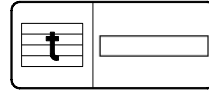
Capacities
Capacités

7 ton

Tragfähigkeiten
Capacités



T



Over Side	DIN ISO	75%
-----------	---------	-----

m	5.1 m					8.4 m					11.6 m					16.4 m					21.2 m				
	t					t					t					t					t				
1.0	7.00					4.90					-					-					-				
1.5	7.00					4.90					4.90					-					-				
2.0	5.40					4.90					4.90					-					-				
2.5	3.54					3.27					3.25					2.10					-				
3.0	2.60					2.40					2.35					2.10					1.40				
3.5	2.01					1.81					1.80					2.10					1.40				
4.0	1.81					1.38					1.35					1.67					1.40				
4.5	(3.7m)					1.10					1.05					1.35					1.40				
5.0	-					0.87					0.85					1.08					1.22				
5.5	-					0.67					0.63					0.85					1.03				
6.0	-					0.49					0.45					0.67					0.85				
7.0	-					0.23					0.18					0.40					0.56				
8.0	-					(6.9m)					-					0.20					0.36				
9.0	-					-					-					-					0.20				
10.0	-					-					-					-					0.10				
Min Angle	-					-					47°					57°					59°				

*H-type outrigger only

ON TYRES 1 (only over the front) No suspension lock up

5.1m – 8.4m	
m	t
5.0	1.00

ON TYRES 2 (X-type outrigger only) optional lock-up suspension engaged

m	360°			Over front		
	5.1m	8.4m	11.6m	5.1m	8.4m	11.6m
1.0	1.70	1.70	-	3.20	3.20	-
1.5	1.70	1.70	1.70	3.20	3.20	3.20
2.0	1.37	1.32	1.32	3.00	3.00	3.00
2.5	0.92	0.86	0.86	2.60	2.54	2.53
3.0	0.61	0.55	0.54	2.15	2.09	2.09
3.5	0.39	0.30	0.26	1.80	1.73	1.73
4.0	0.32	0.18	0.12	1.69	1.44	1.44
4.5	(3.7m)	0.12	-	(3.7m)	1.20	1.20
5.0	-	-	-	-	1.00	1.00
5.5	-	-	-	-	0.82	0.81
6.0	-	-	-	-	0.67	0.66
7.0	-	-	-	-	-	0.42
8.0	-	-	-	-	-	0.25

V.2012-07-12

nothing too heavy, nothing too high

