

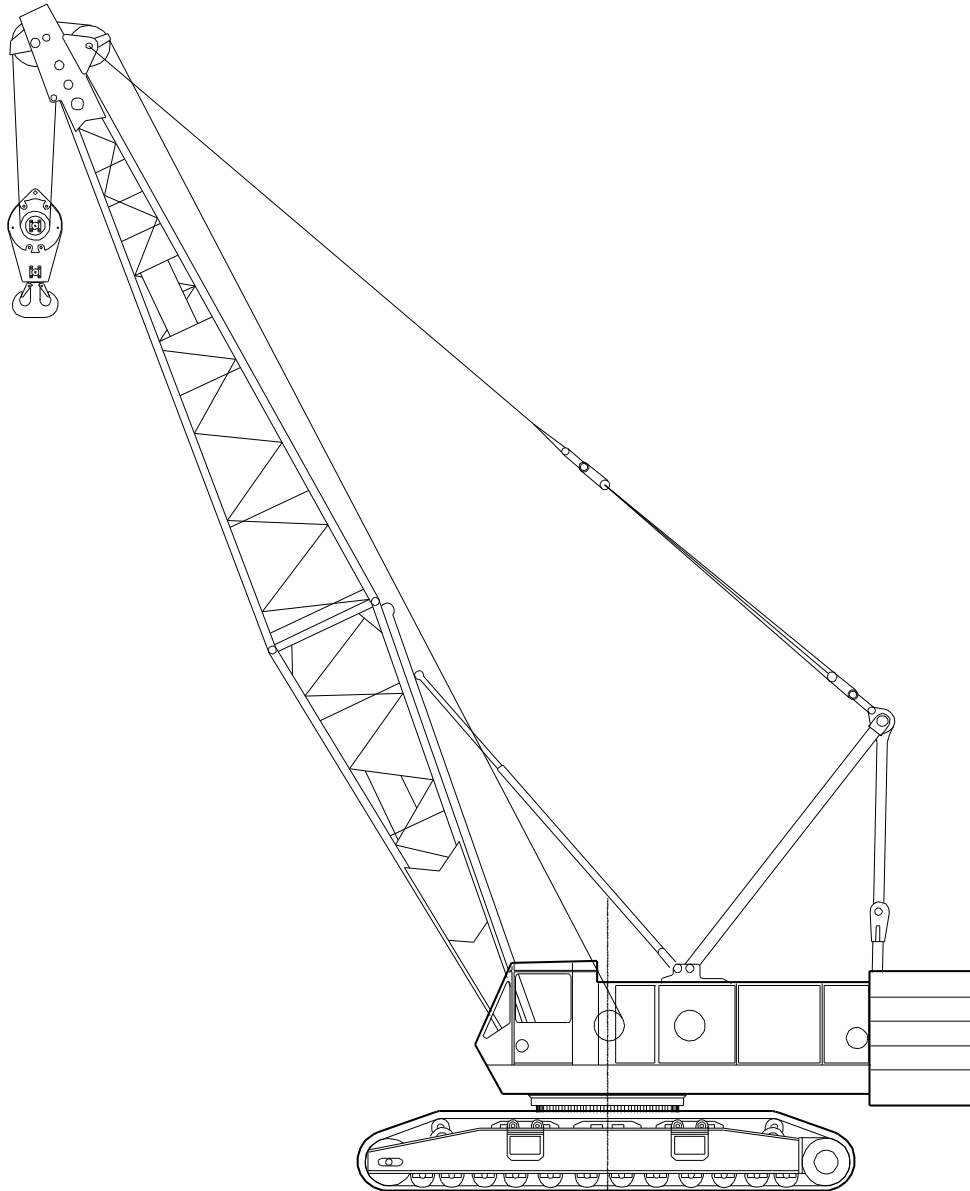


sarens
group

www.sarens.com

KOBELCO 7150

150 TON



nothing too heavy, nothing too high



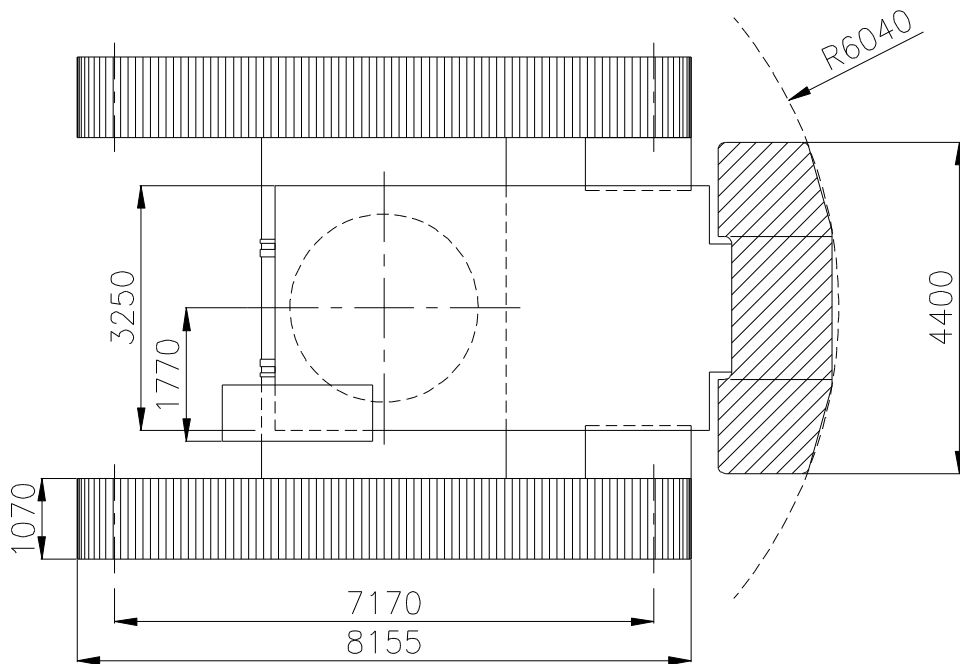
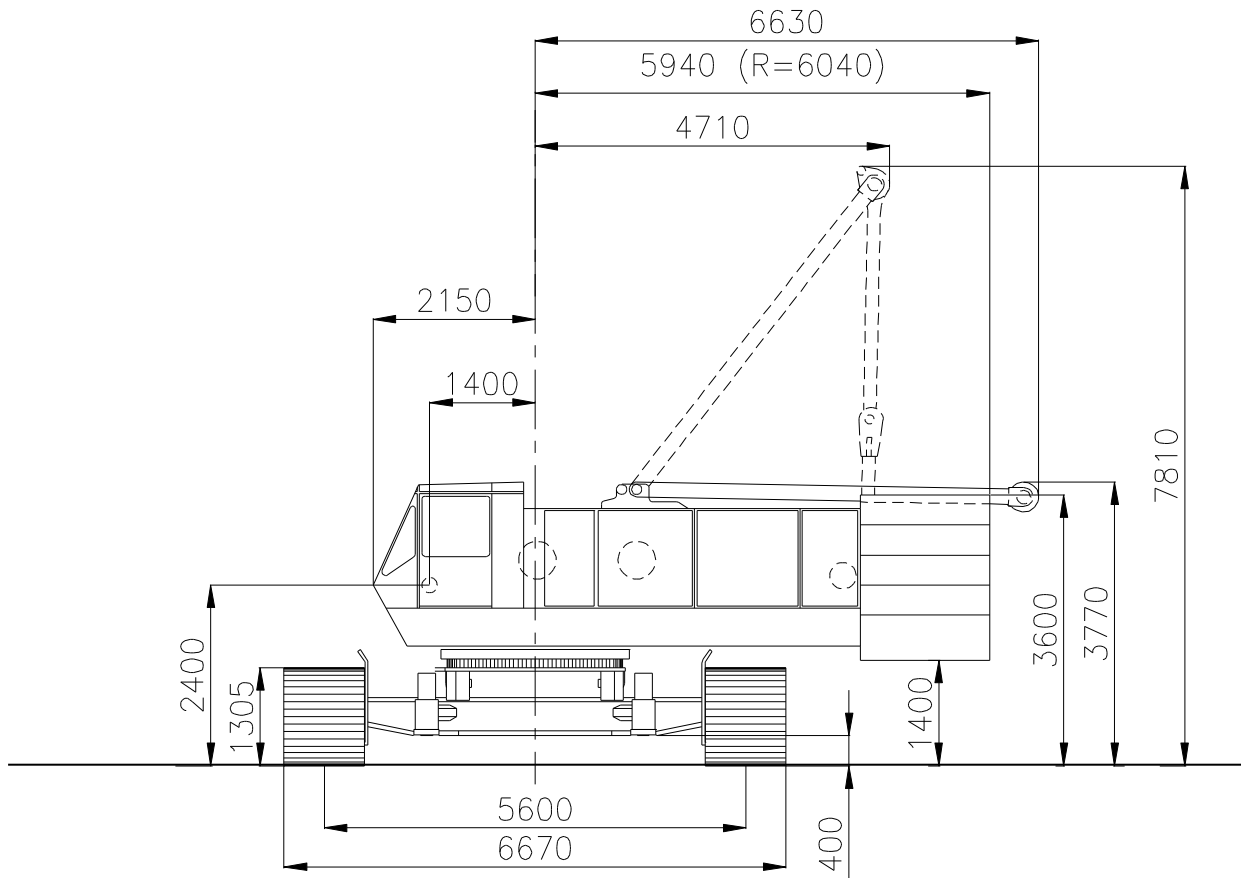


KOBELCO 7150

Dimensions
Dimensions

150 TON

Abmessungen
Afmetingen





KOBELCO 7150

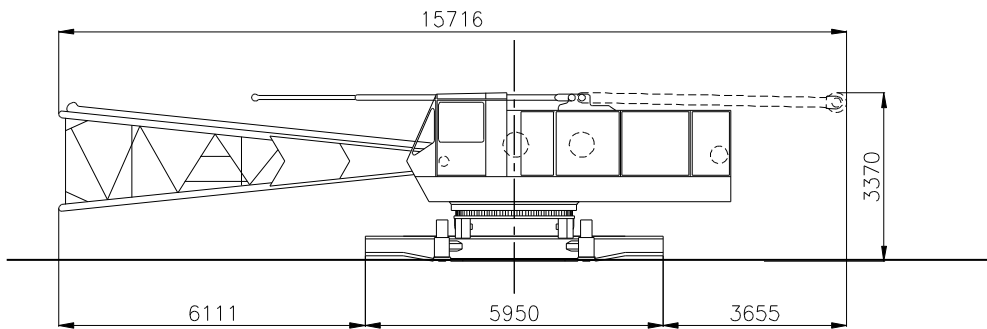
**Weight
Poids**

150 TON

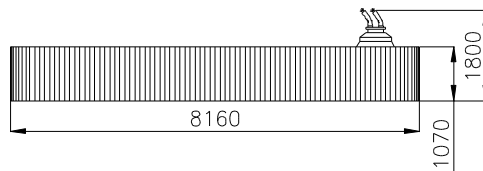
**Gewicht
Gewicht**

Superstructure with carbody Partie supérieure avec carter central Oberwagen mit Mittelstück Bovenwagen met centraal onderstelgedeelte		46.8 t
Crawler unit Bâti de chenille Raupen Rupsen		2 x 20.7 t
Counterweight + central ballast Contrepoids + lest central Gegengewicht + Zentralballast Tegengewicht + centraalballast	K 0 428 / 1 328	54 t
	K 0 376	62.3 + 20 t

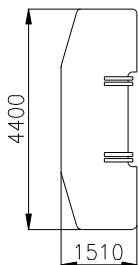
1 x 46.8 t
15716 x 3250 x 3370



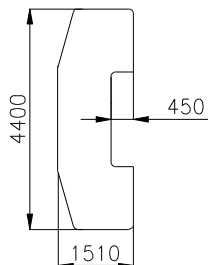
2 x 20.7 t
8160 x 1800 x 1305



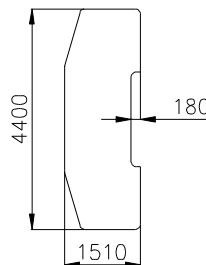
1 x 13.6 t
1510x4400x950 mm



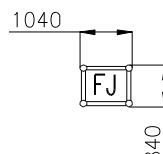
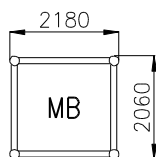
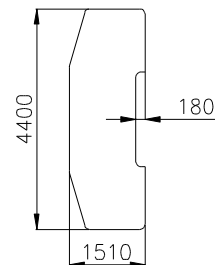
1 x 10.5 t
1510x4400x400 mm



2 x 10.8 t
1510x4400x400 mm



2 x 8.3 t
1510x4400x400 mm





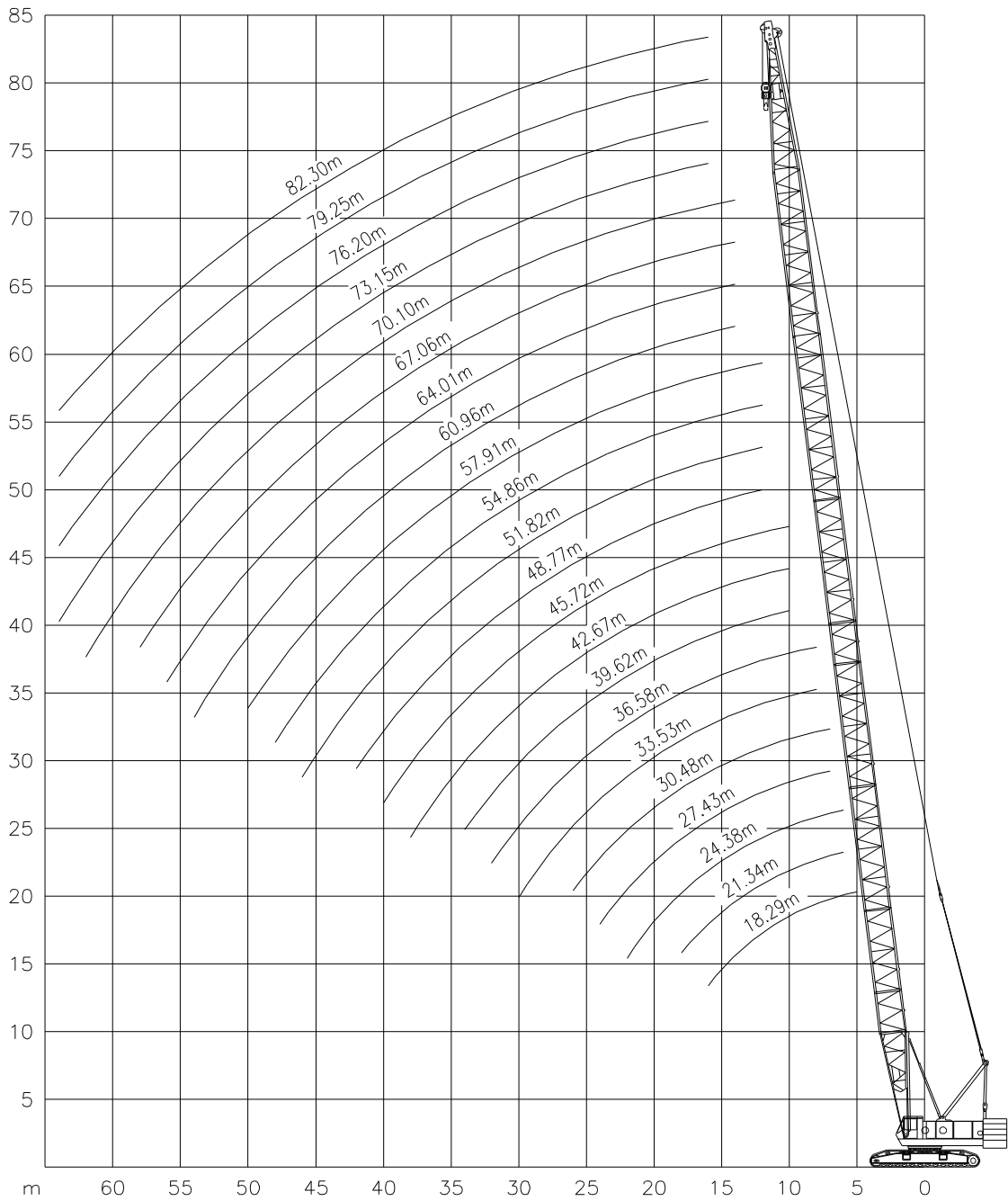
KOBELCO 7150

Working ranges
Portées

150 TON

Arbeitsbereiche
Werkbereich

MB





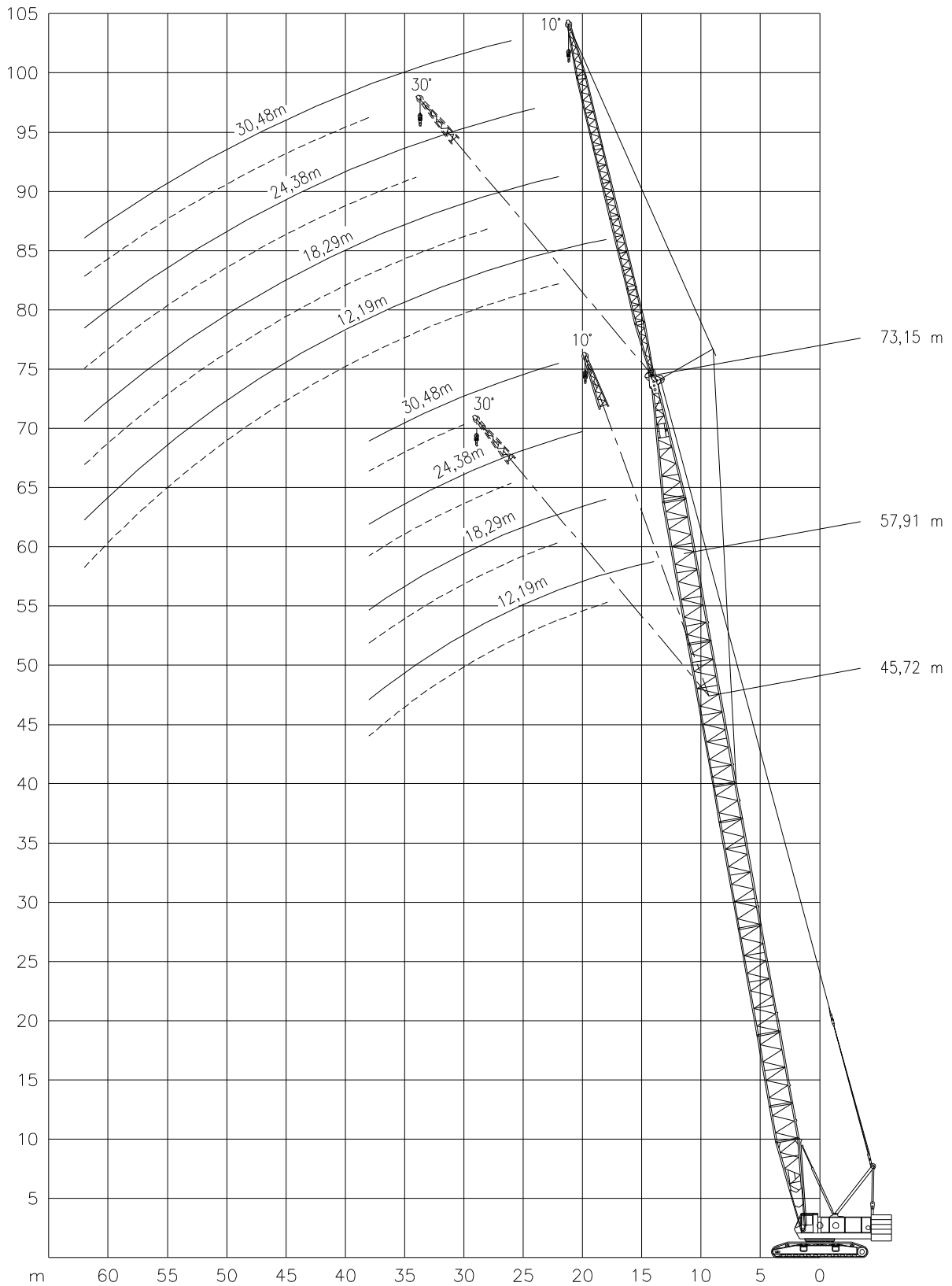
KOBELCO 7150

Working ranges
Portées

150 TON

Arbeitsbereiche
Werkbereich

FJ



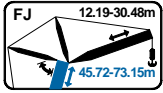


KOBELCO 7150

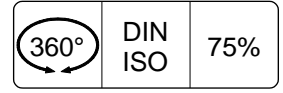
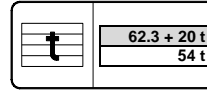
Lifting capacities
Capacités

150 TON

Tragfähigkeiten
Capacités



FJ



m	45.72m							
	12.19m		18.29m		24.38m		30.48m	
	10°	30°	10°	30°	10°	30°	10°	30°
t	t	t	t	t	t	t	t	t
14.0	15.0	-	-	-	-	-	-	-
16.0	15.0	-	-	-	-	-	-	-
18.0	15.0	13.0	12.0	-	-	-	-	-
20.0	15.0	13.0	12.0	-	8.0	-	-	-
22.0	15.0	13.0	12.0	8.0	8.0	-	4.0	-
24.0	15.0	13.0	12.0	8.0	8.0	-	4.0	-
26.0	15.0	13.0	12.0	8.0	7.8	6.0	4.0	-
28.0	15.0	12.6	12.0	8.0	7.6	6.0	4.0	-
30.0	15.0	12.3	12.0	8.0	7.4	6.0	4.0	3.0
34.0	12.7	11.5	11.5	8.0	7.1	6.0	4.0	3.0
38.0	10.8	10.8	10.6	7.6	6.7	5.7	3.7	3.0

m	57.91m							
	12.19m		18.29m		24.38m		30.48m	
	10°	30°	10°	30°	10°	30°	10°	30°
t	t	t	t	t	t	t	t	t
16.0	15.0	-	-	-	-	-	-	-
18.0	15.0	-	-	-	-	-	-	-
20.0	15.0	13.0	12.0	-	-	-	-	-
22.0	15.0	13.0	12.0	-	8.0	-	-	-
24.0	15.0	13.0	12.0	8.0	8.0	-	4.0	-
26.0	15.0	13.0	12.0	8.0	8.0	-	4.0	-
28.0	15.0	13.0	12.0	8.0	8.0	6.0	4.0	-
30.0	14.3	13.0	12.0	8.0	8.0	6.0	4.0	-
34.0	11.8	11.8	11.8	8.0	7.6	6.0	4.0	3.0
38.0	9.9	9.9	9.9	8.0	7.2	6.0	4.0	3.0
42.0	8.4	8.4	8.4	7.7	6.8	5.7	3.9	3.0
46.0	7.2	7.2	7.2	7.2	6.4	5.4	3.6	2.9
50.0	6.2	6.2	6.2	6.2	6.0	5.1	3.3	2.8

m	73.15m							
	12.19m		18.29m		24.38m		30.48m	
	10°	30°	10°	30°	10°	30°	10°	30°
t	t	t	t	t	t	t	t	t
18.0	15.0	-	-	-	-	-	-	-
20.0	15.0	-	-	-	-	-	-	-
22.0	15.0	13.0	12.0	-	-	-	-	-
24.0	15.0	13.0	12.0	-	8.0	-	-	-
26.0	15.0	13.0	12.0	-	8.0	-	4.0	-
28.0	15.0	13.0	12.0	8.0	8.0	-	4.0	-
30.0	14.0	13.0	12.0	8.0	8.0	-	4.0	-
34.0	11.4	11.4	11.4	8.0	8.0	6.0	4.0	-
38.0	9.5	9.5	9.5	8.0	7.7	6.0	4.0	3.0
42.0	7.9	7.9	7.9	7.8	7.4	6.0	4.0	3.0
46.0	6.6	6.6	6.6	6.6	6.6	5.6	4.0	3.0
50.0	5.5	5.5	5.5	5.5	5.5	5.1	3.7	3.0
54.0	4.4	4.4	4.4	4.4	4.4	4.4	3.5	2.8
58.0	3.6	3.6	3.6	3.6	3.6	3.6	3.2	2.7
62.0	2.8	2.8	2.8	2.8	2.8	2.8	2.8	2.5

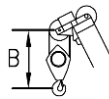


Working speeds Vitesses de travail

Arbeitsgeschwindigkeiten Werksnelheden

Mechanisms Mécanismes Antriebe Aandrijvingen	Speeds Vitesses Geschwindigkeiten Snelheden	Rope diameter Diamètre du câble Seildurchmesser Kabeldiameter	Single line pull Effort sur brin simple Zulässiger Seilzug je strang Toegelaten trekkracht / part	Length of ropes Longueur des cables Länge der Seile Kabellänge
Main hoist Levage sur flèche Hubwerk 1 Hijslier 1	0 - 90 m/min	26 mm	107.9 kN	370 m
Auxiliary hoist Levage sur fléchette Hubwerk 2 Hijslier 2	0 - 90 m/min	26 mm	107.9 kN	290 m
Boom hoist Relevage de flèche Einziehwerk Top lier	0 - 25 m/min	20 mm		290 m
Slewing gear Orientation Drehwerk Zwenkwerk	0 - 1.1 / 2.2 RPM			
Travel speed Vitesse sur route Fahrgeschwindigkeit Rijsnelheid	0 - 0.6 km/h 0 - 1.2 km/h			

Hook Block / Crane hook Crochet mouflé / Crochet simple



Unterflasche / Hakengehänge Kraanblok / Kraanhaak

Capacity Capacité Tragfähigkeit Capaciteit	Number of sheaves Nombre de poulies Anzahl der Rollen Aantal schijven	Number of lines Nombre de brins Strangzahl Aantal parten	Weight Poids Gewicht Gewicht	"B"
SWL 150 t	7	15	2200 kg	2.5 m
SWL 65 t	3	7	1100 kg	2.5 m
SWL 25 t	1	3	700 kg	2.5 m
SWL 12 t	-	1	450 kg	2.5 m