



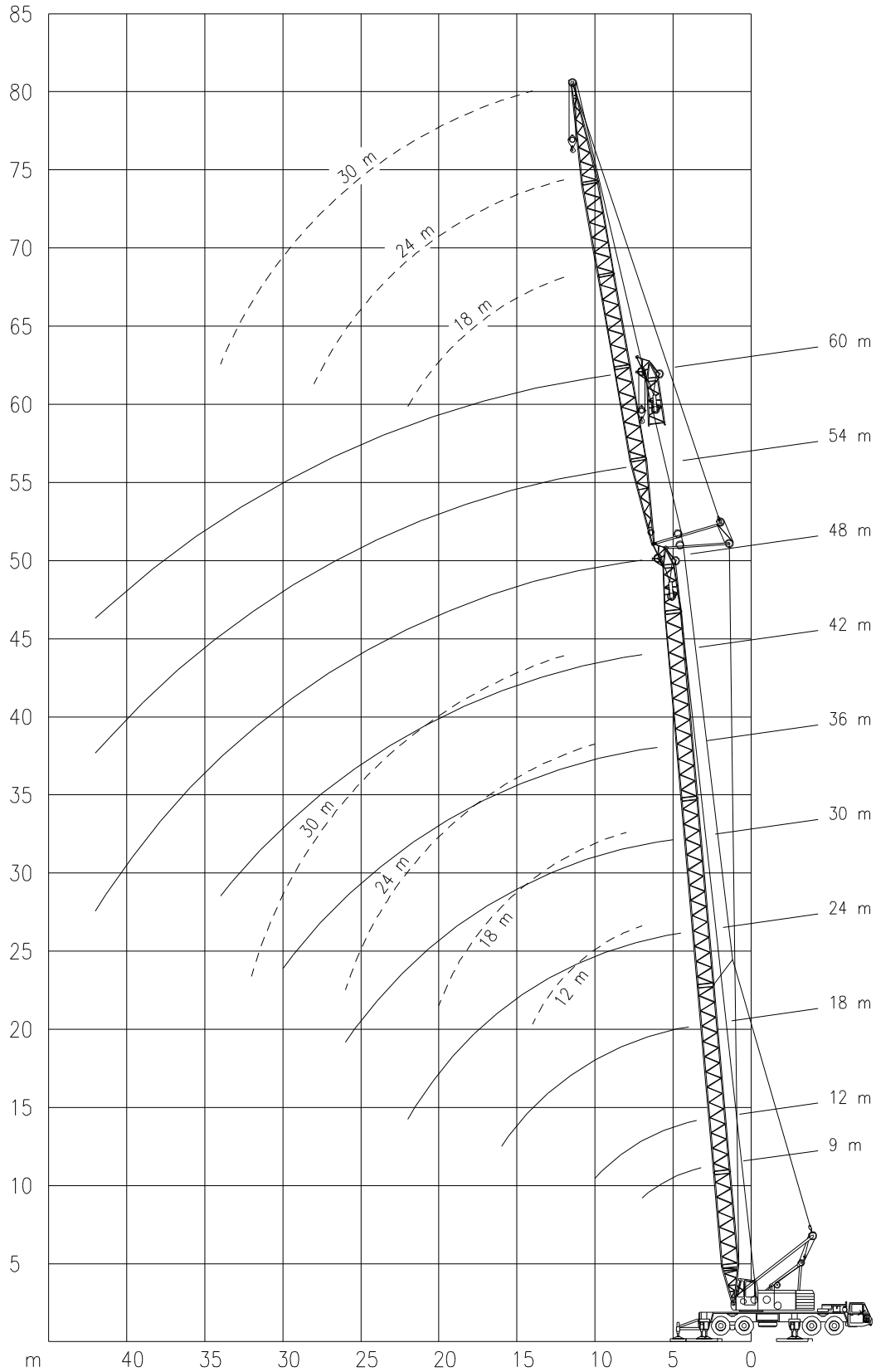
TEREX TC 300

Working ranges
Portées

90 TON

Arbeitsbereiche
Werkbereich

SH - SW



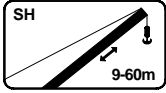


TEREX TC 300

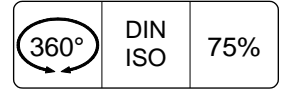
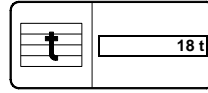
Lifting capacities
Capacités

90 TON

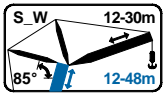
Tragfähigkeiten
Capacités



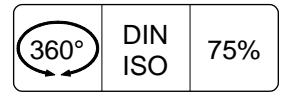
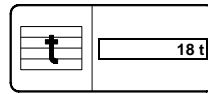
SH



	9m	12m	18m	24m	30m	36m	42m	48m	54m	60m
3.2	90.0	-	-	-	-	-	-	-	-	-
3.5	84.5	84.5	-	-	-	-	-	-	-	-
4.0	77.0	77.0	71.5	-	-	-	-	-	-	-
4.5	69.0	69.0	68.1	63.5	-	-	-	-	-	-
5.0	62.2	62.0	61.4	61.2	57.0	-	-	-	-	-
6.0	51.7	51.5	51.1	50.7	50.2	42.4	-	-	-	-
7.0	43.5	43.3	42.7	42.3	42.1	39.2	30.0	22.6	-	-
8.0	37.3	37.0	36.7	36.3	36.0	33.5	29.0	22.2	16.0	-
9.0	32.7	32.5	32.1	31.7	31.3	29.2	27.4	21.7	15.8	10.5
10.0	-	28.7	28.5	28.2	27.8	25.8	25.4	21.2	15.6	10.3
12.0	-	-	22.0	21.1	20.9	20.7	20.4	19.4	15.1	10.0
14.0	-	-	17.2	16.9	16.7	16.5	16.2	16.1	14.2	9.5
16.0	-	-	14.4	14.1	13.8	13.6	13.3	13.2	12.9	8.9
18.0	-	-	-	12.0	11.7	11.5	11.2	11.0	10.7	8.4
20.0	-	-	-	10.4	10.1	9.9	9.6	9.4	9.1	7.7
22.0	-	-	-	9.2	8.4	8.6	8.3	8.1	7.8	7.1
24.0	-	-	-	-	7.9	7.6	7.3	7.1	6.8	6.5
26.0	-	-	-	-	7.1	6.8	6.4	6.3	5.9	5.7
28.0	-	-	-	-	-	6.1	5.8	5.6	5.2	5.0
30.0	-	-	-	-	-	5.5	5.2	4.9	4.6	4.5
34.0	-	-	-	-	-	-	4.2	4.0	3.6	3.4
38.0	-	-	-	-	-	-	-	3.2	2.8	2.6
42.0	-	-	-	-	-	-	-	2.6	2.2	1.9



SW 85°



	12m				18m				24m				30m			
	12m	18m	24m	30m	12m	18m	24m	30m	12m	18m	24m	30m	12m	18m	24m	30m
7.0	35.0	-	-	-	35.0	-	-	-	-	-	-	-	-	-	-	-
8.0	31.4	28.4	-	-	31.4	-	-	-	30.7	-	-	-	-	-	-	-
9.0	29.0	26.0	-	-	29.0	25.2	-	-	28.2	22.9	-	-	-	-	-	-
10.0	26.3	23.8	20.5	-	26.3	23.8	19.2	-	26.0	22.0	-	-	-	19.1	-	-
12.0	21.9	20.5	18.5	15.0	21.6	21.2	17.6	13.7	21.3	20.4	16.1	12.4	-	18.2	13.9	-
14.0	17.8	17.6	16.6	14.1	17.7	17.5	16.1	13.0	17.6	17.4	15.1	11.8	-	17.3	13.4	10.6
16.0	-	14.7	14.6	13.0	-	14.7	14.5	12.2	-	14.6	14.4	11.3	-	14.5	12.9	10.3
18.0	-	12.7	12.5	12.3	-	12.6	12.4	11.5	-	12.5	12.4	10.8	-	12.4	12.2	10.0
20.0	-	11.1	11.0	10.8	-	11.0	10.9	10.7	-	10.9	10.8	10.1	-	10.9	10.7	9.8
22.0	-	-	9.7	9.5	-	-	9.6	9.5	-	-	9.6	9.4	-	9.6	9.4	9.3
24.0	-	-	8.7	8.5	-	-	8.6	8.5	-	-	8.6	8.4	-	-	8.5	8.3
26.0	-	-	7.9	7.7	-	-	7.8	7.6	-	-	7.8	7.6	-	-	7.6	7.5
28.0	-	-	-	7.0	-	-	-	7.0	-	-	-	6.9	-	-	-	6.8
30.0	-	-	-	6.3	-	-	-	6.3	-	-	-	6.3	-	-	-	6.2
32.0	-	-	-	5.6	-	-	-	5.6	-	-	-	5.6	-	-	-	5.5

	36m				42m				48m			
	12m	18m	24m	30m	12m	18m	24m	30m	12m	18m	24m	30m
10.0	-	15.2	-	-	-	-	-	-	-	-	-	-
12.0	-	14.9	11.5	-	-	11.5	9.1	-	-	8.6	7.3	-
14.0	-	14.2	11.1	8.9	-	11.0	8.9	7.1	-	8.4	7.1	5.9
16.0	-	13.4	10.8	8.7	-	10.7	8.7	7.0	-	8.2	6.9	5.7
18.0	-	12.3	10.6	8.5	-	10.4	8.5	6.8	-	8.1	6.8	5.6
20.0	-	10.7	10.1	8.3	-	10.0	8.3	6.7	-	8.0	6.6	5.5
22.0	-	9.5	9.4	8.0	-	9.4	8.1	6.6	-	7.9	6.6	5.4
24.0	-	-	8.4	7.7	-	-	7.8	6.5	-	-	6.4	5.3
26.0	-	-	7.6	7.4	-	-	7.5	6.4	-	-	6.3	5.2
28.0	-	-	6.9	6.7	-	-	6.8	6.3	-	-	6.1	5.1
30.0	-	-	-	6.1	-	-	-	6.1	-	-	-	5.0
32.0	-	-	-	5.5	-	-	-	5.5	-	-	-	4.9
34.0	-	-	-	5.1	-	-	-	5.1	-	-	-	4.8



TEREX TC 300

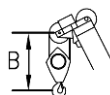
90 TON

Working speeds
Vitesses de travail

Arbeitsgeschwindigkeiten
Werksnelheden

Mechanisms Mécanismes Antriebe Aandrijvingen	Speeds Vitesses Geschwindigkeiten Snelheden	Single line pull Effort sur brin simple Zulässiger Seilzug je strang Toegelaten trekkracht / part	Length of ropes Longueur des cables Länge der Seile Kabellengte
Main hoist Levage sur flèche Hubwerk 1 Hijslier 1	103 m/min	67 kN	320 m
Auxiliary hoist Levage sur fléchette Hubwerk 2 Hijslier 2	103 m/min	67 kN	230 m
Boom hoist Relevage de flèche Einziehwerk Toplier hoofdmast	51 m/min	-	130 m
Luffing hoist Relevage de fléchette Wippwerk Toplier wipper	57 m/min	-	160 m
Slewing gear Orientation Drehwerk Zwenkwerk	0 – 2 RPM		

Hook Block / Crane hook Crochet mouflé / Crochet simple



Unterflasche / Hakengehänge Kraanblok / Kraanhaak

Capacity Capacité Tragfähigkeit Capaciteit	Number of sheaves Nombre de poulies Anzahl der Rollen Aantal schijven	Number of lines Nombre de brins Strangzahl Aantal parten	Weight Poids Gewicht Gewicht	"B"
SWL 90 t	7	14	1144 kg	2.5 m
SWL 40 t	3	6	570 kg	2.5 m
SWL 16 t	1	3	220 kg	2.5 m
SWL 5 t	-	1	190 kg	2.5 m