

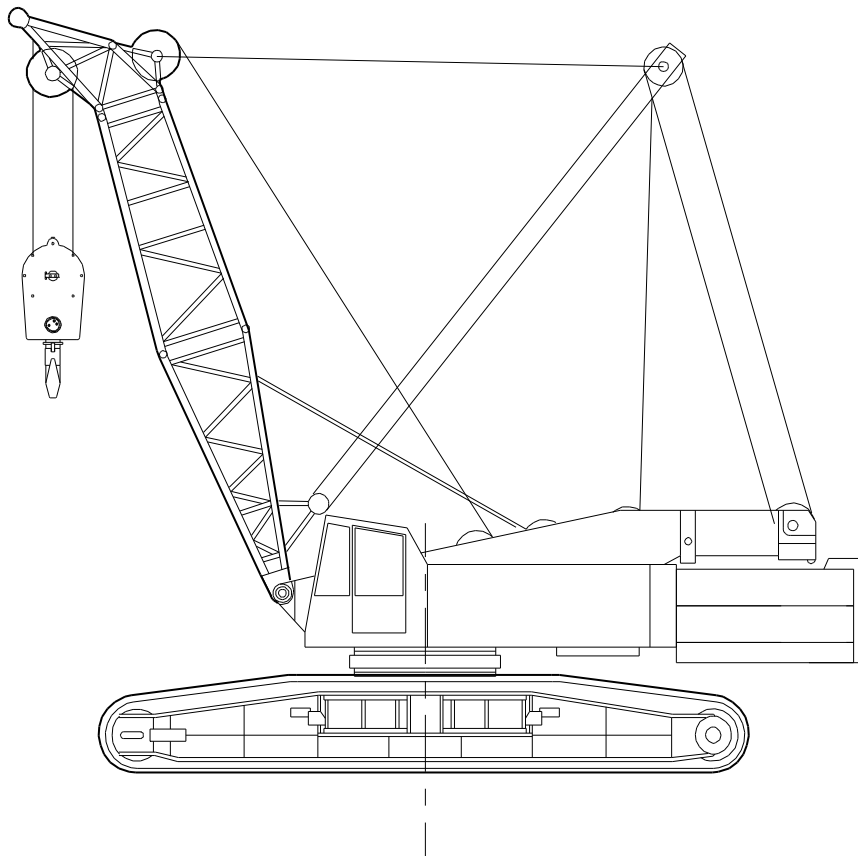


**sarens**  
group

[www.sarens.com](http://www.sarens.com)

**Terex CC600**

**140 TON**



nothing too heavy, nothing too high



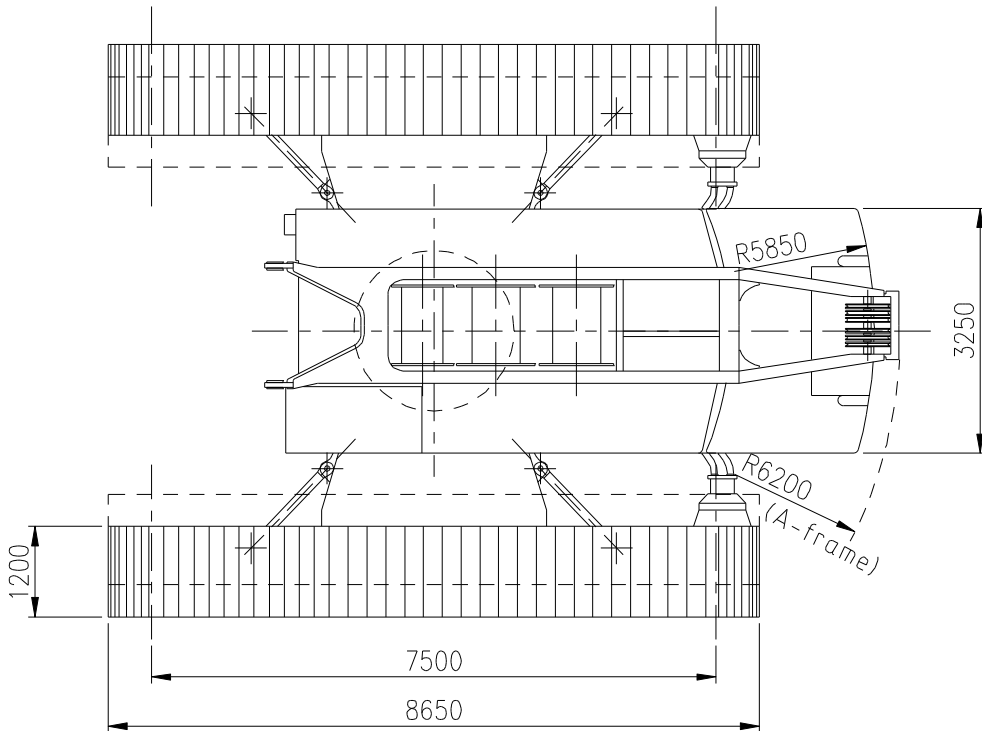
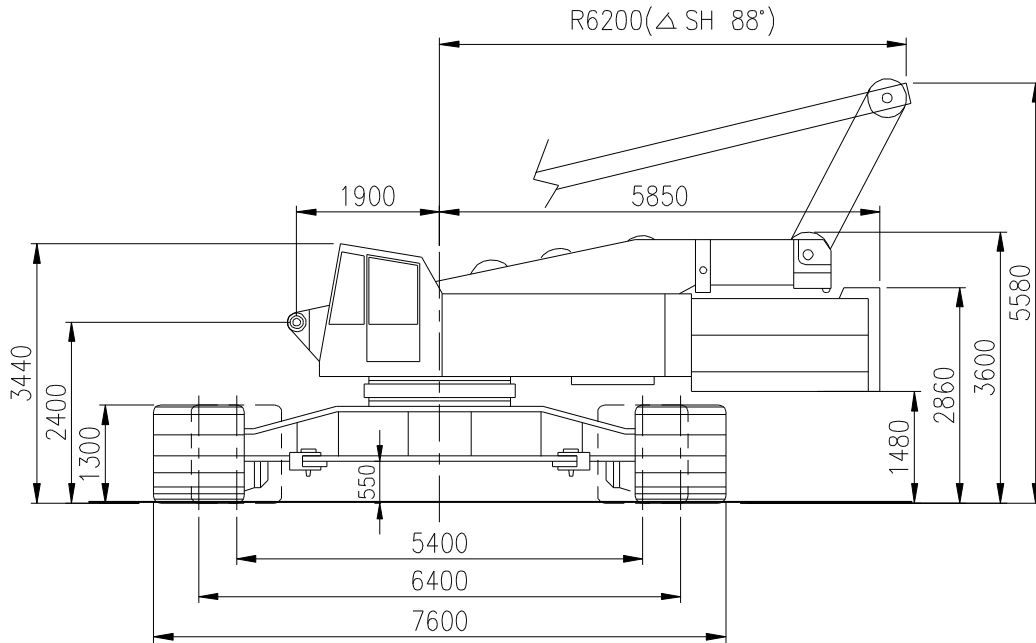


# TEREX CC 600

Dimensions  
Dimensions

# 140 TON

Abmessungen  
Afmetingen





# TEREX CC 600

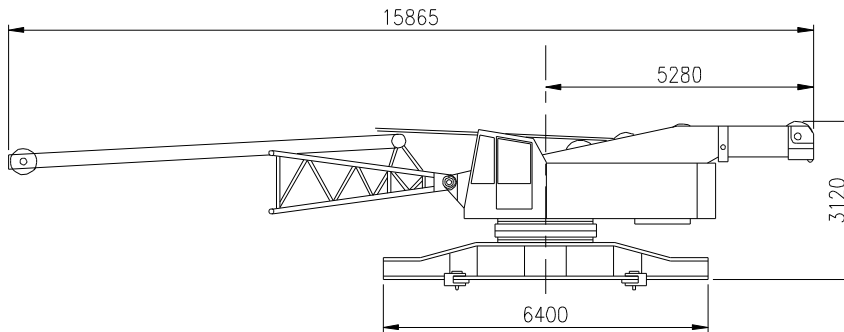
Weight  
Poids

# 140 TON

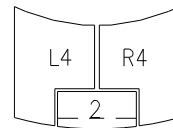
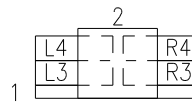
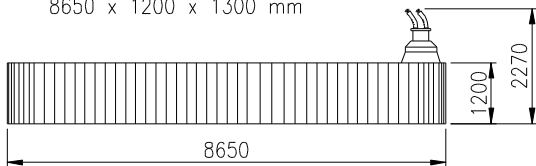
Gewicht  
Gewicht

Superstructure with carbody Partie supérieure avec carter central Oberwagen mit Mittelstück Bovenwagen met centraal onderstelgedeelte	34,8 t
Crawler unit Bâti de chenille Raupen Rupsen	2 x 19,5 t
Counterweight Contrepoids Gegengewicht Tegengewicht	55 t

Carbody: 34.8 t  
15865 x 3250 x 3210 mm

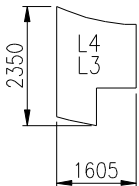


2 x 19.5 t  
8650 x 1200 x 1300 mm



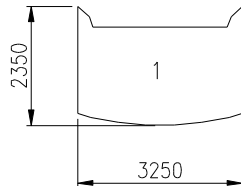
2 x 8,7 t

1605 x 2350 x 485 mm



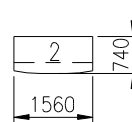
1 x 10,37 t

3250 x 2350 x 265 mm



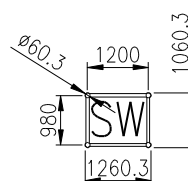
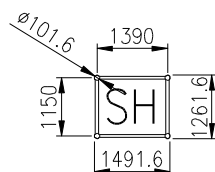
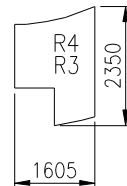
1 x 9,95 t

1560 x 740 x 1380 mm



2 x 8,7 t

1605 x 2350 x 485 mm





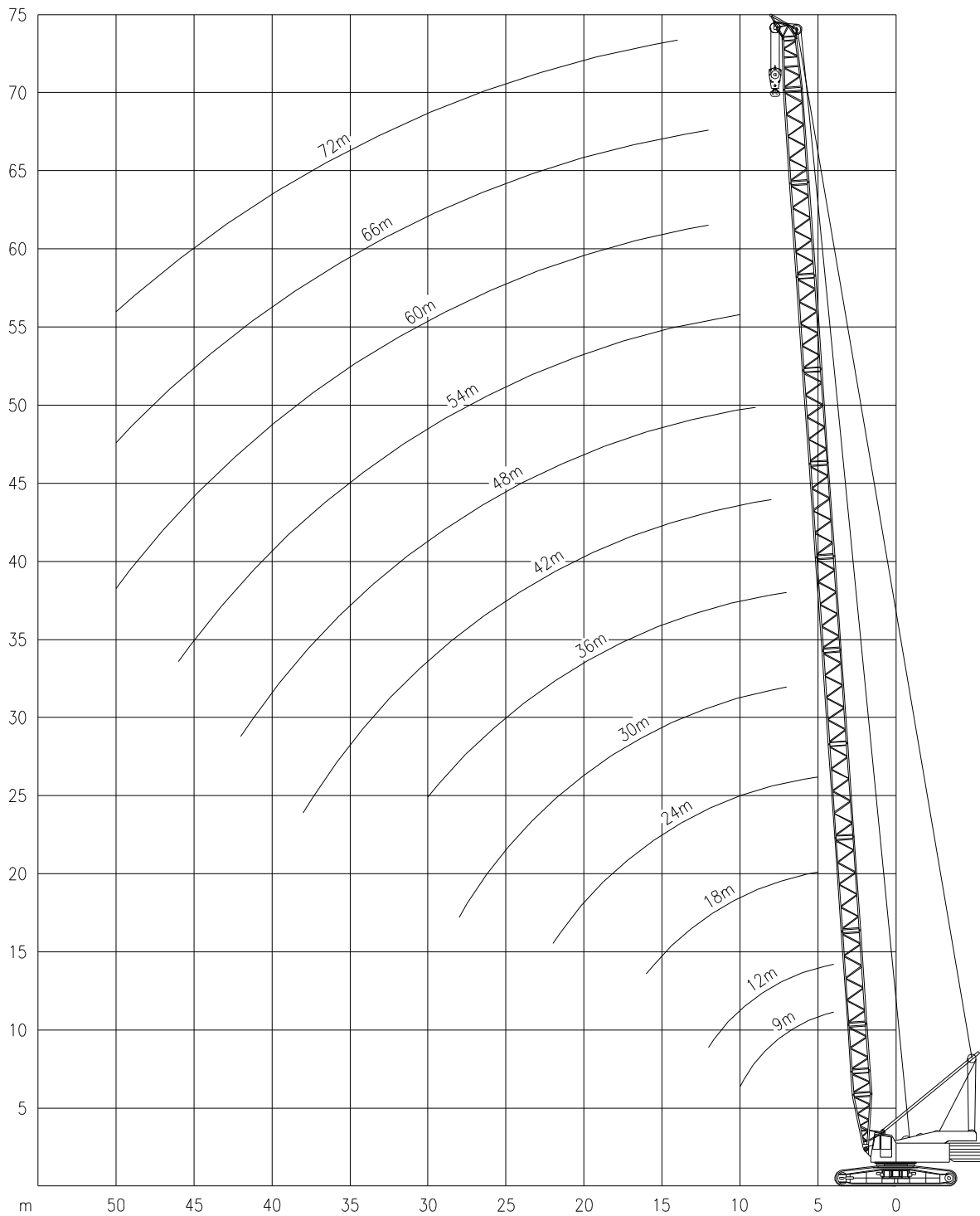
# TEREX CC 600

Working ranges  
Portées

140 TON

Arbeitsbereiche  
Werkbereich

SH



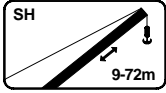


# TEREX CC 600

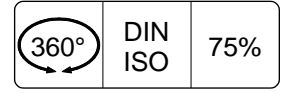
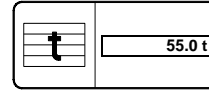
Lifting capacities  
Capacités

# 140 TON

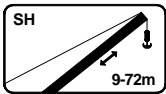
Tragfähigkeiten  
Capacités



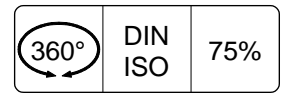
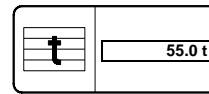
SH



SH	9m	12m	18m	24m	30m	36m	42m	48m	54m	60m	66m	72m
	t	t	t	t	t	t	t	t	t	t	t	t
4.0	140.0	140.0	-	-	-	-	-	-	-	-	-	-
4.5	135.0	134.0	-	-	-	-	-	-	-	-	-	-
5.0	127.4	127.1	126.4	125.7	-	-	-	-	-	-	-	-
6.0	107.1	106.8	106.1	105.5	-	-	-	-	-	-	-	-
7.0	90.4	90.2	89.6	89.0	88.4	87.0	-	-	-	-	-	-
8.0	78.1	77.9	77.3	76.8	76.1	75.5	69.0	-	-	-	-	-
9.0	68.7	68.4	67.9	67.4	66.7	66.1	65.0	59.0	-	-	-	-
10.0	61.3	61.0	60.5	59.9	59.3	58.7	58.0	55.0	48.5	-	-	-
12.0	-	50.0	49.5	48.9	48.3	47.8	47.0	46.5	41.0	36.0	28.0	-
14.0	-	-	40.2	39.8	39.3	38.9	38.8	37.9	36.0	32.5	26.5	20.0
16.0	-	-	33.5	33.1	32.6	32.2	31.6	31.2	30.7	29.0	24.5	19.0
18.0	-	-	-	28.2	27.7	27.2	26.7	26.2	25.8	25.2	22.5	17.5
20.0	-	-	-	24.5	24.0	23.5	22.9	22.5	22.0	21.5	20.3	16.0
22.0	-	-	-	21.6	21.0	20.6	20.0	19.5	19.1	18.5	18.2	14.7
24.0	-	-	-	-	18.7	18.2	17.6	17.1	16.7	16.1	15.8	13.5
26.0	-	-	-	-	16.8	16.3	15.7	15.2	14.7	14.1	13.8	12.2
28.0	-	-	-	-	15.2	14.7	14.0	13.5	13.1	12.5	12.2	10.8
30.0	-	-	-	-	-	13.3	12.7	12.2	11.7	11.1	10.8	9.7
34.0	-	-	-	-	-	-	10.5	10.0	9.5	8.8	8.4	7.5
38.0	-	-	-	-	-	-	8.9	8.3	7.7	7.0	6.5	5.9
42.0	-	-	-	-	-	-	-	6.9	6.3	5.6	5.1	4.5
46.0	-	-	-	-	-	-	-	-	5.2	4.4	4.0	3.3
50.0	-	-	-	-	-	-	-	-	-	3.6	3.0	2.4



SH



SH	9m	12m	18m	24m	30m	36m	42m	48m	54m	60m	66m	72m
	t	t	t	t	t	t	t	t	t	t	t	t
4.0	116.0	116.0	-	-	-	-	-	-	-	-	-	-
4.5	110.0	110.0	-	-	-	-	-	-	-	-	-	-
5.0	105.0	105.0	105.0	105.0	-	-	-	-	-	-	-	-
6.0	97.0	97.0	97.0	97.0	-	-	-	-	-	-	-	-
7.0	90.4	90.2	89.6	89.0	88.4	87.0	-	-	-	-	-	-
8.0	79.1	77.8	77.9	76.8	76.1	75.5	69.0	-	-	-	-	-
9.0	66.0	66.0	65.7	65.3	64.9	64.5	63.9	59.0	-	-	-	-
10.0	56.8	56.6	56.3	55.9	55.5	55.0	54.5	54.1	48.5	-	-	-
12.0	-	43.9	43.6	43.2	42.7	42.3	41.7	41.3	40.9	36.0	28.0	-
14.0	-	-	35.4	35.0	34.5	34.0	33.4	33.0	32.6	32.0	26.5	20.0
16.0	-	-	29.7	29.2	28.7	28.3	27.7	27.2	26.8	26.2	24.5	19.0
18.0	-	-	-	25.0	24.5	24.0	23.4	23.0	22.5	22.0	21.6	17.5
20.0	-	-	-	21.8	21.2	20.8	20.2	19.7	19.3	18.7	18.3	16.0
22.0	-	-	-	19.2	18.7	18.2	17.6	17.1	16.7	16.1	15.7	14.7
24.0	-	-	-	-	16.6	16.1	15.5	15.0	14.6	14.0	13.6	12.9
26.0	-	-	-	-	14.9	14.4	13.8	13.3	12.8	12.2	11.9	11.2
28.0	-	-	-	-	13.5	13.0	12.3	11.8	11.4	10.8	10.4	9.7
30.0	-	-	-	-	-	11.8	11.1	10.6	10.1	9.5	9.1	8.5
34.0	-	-	-	-	-	-	9.2	8.6	8.1	7.4	6.9	6.3
38.0	-	-	-	-	-	-	7.7	7.1	6.5	5.7	5.3	4.7
42.0	-	-	-	-	-	-	-	5.9	5.2	4.5	4.0	3.4
46.0	-	-	-	-	-	-	-	-	4.2	3.5	3.0	2.3
50.0	-	-	-	-	-	-	-	-	-	2.7	2.2	1.5



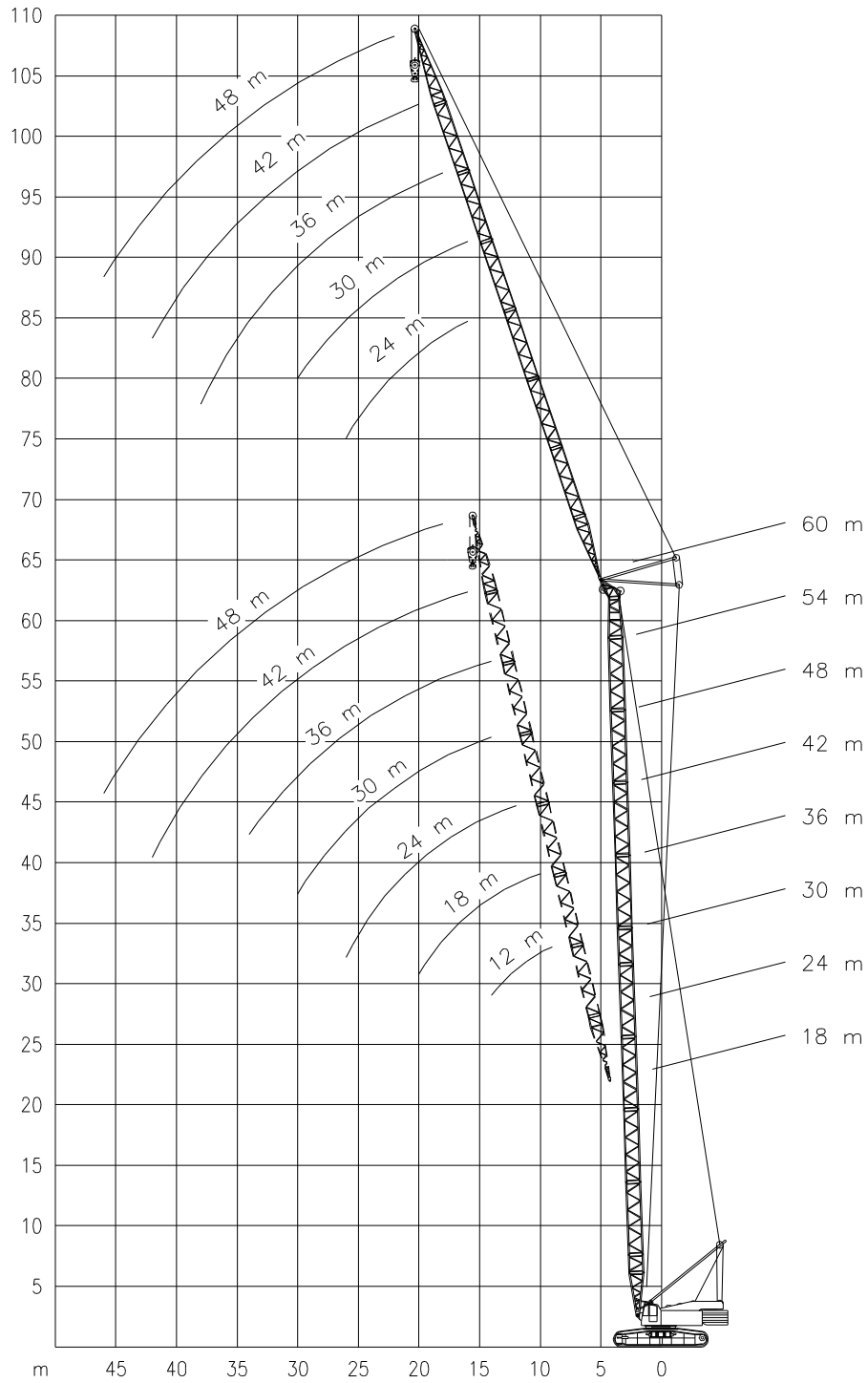
# TEREX CC 600

Working ranges  
Portées

## 140 TON

Arbeitsbereiche  
Werkbereich

### LW



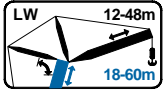


# TEREX CC 600

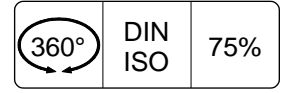
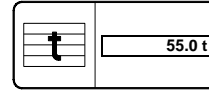
Lifting capacities  
Capacités

# 140 TON

Tragfähigkeiten  
Capacités



LW



m	18m							24m						
	12m	18m	24m	30m	36m	42m	48m	12m	18m	24m	30m	36m	42m	48m
9.0	50.0	-	-	-	-	-	-	50.0	-	-	-	-	-	-
10.0	48.0	41.0	-	-	-	-	-	48.0	38.4	-	-	-	-	-
12.0	42.9	35.7	29.0	-	-	-	-	42.9	35.7	28.7	-	-	-	-
14.0	36.6	32.2	27.3	22.3	17.6	-	-	36.6	32.2	26.8	21.7	-	-	-
16.0	-	29.0	25.3	21.0	16.6	13.5	-	-	29.0	24.9	20.3	15.9	12.8	-
18.0	-	25.5	23.5	19.6	15.7	12.7	10.0	-	25.5	23.2	18.9	15.0	12.1	9.8
20.0	-	21.8	21.5	18.5	14.8	11.9	9.3	-	21.8	21.2	17.7	14.2	11.4	9.1
22.0	-	-	19.4	17.4	14.0	11.2	8.8	-	-	19.4	16.5	13.5	10.9	8.6
24.0	-	-	17.3	16.3	13.4	10.5	8.2	-	-	17.4	15.5	12.9	10.4	8.0
26.0	-	-	15.0	15.0	12.6	10.0	7.7	-	-	15.4	14.4	12.3	9.8	7.5
28.0	-	-	-	13.6	12.0	9.5	7.2	-	-	-	13.2	11.6	9.4	7.0
30.0	-	-	-	11.6	11.3	9.0	6.8	-	-	-	11.6	11.0	9.0	6.5
34.0	-	-	-	-	9.8	8.3	5.9	-	-	-	-	9.7	8.2	5.7
38.0	-	-	-	-	-	7.6	5.2	-	-	-	-	-	7.6	5.0
42.0	-	-	-	-	-	6.6	4.6	-	-	-	-	-	6.6	4.6
46.0	-	-	-	-	-	-	4.2	-	-	-	-	-	-	4.2

m	30m							36m						
	12m	18m	24m	30m	36m	42m	48m	12m	18m	24m	30m	36m	42m	48m
12.0	-	34.6	28.2	-	-	-	-	-	31.7	-	-	-	-	-
14.0	-	31.8	26.0	20.3	-	-	-	-	29.8	23.5	18.3	-	-	-
16.0	-	29.1	24.2	19.2	15.0	-	-	-	27.6	22.4	17.6	14.2	-	-
18.0	-	25.6	22.5	18.3	14.3	11.4	-	-	25.3	21.1	17.0	13.6	10.6	-
20.0	-	22.3	20.9	17.3	13.7	10.9	8.3	-	22.1	19.9	16.3	13.0	10.2	7.5
22.0	-	-	19.2	16.3	13.1	10.5	8.0	-	-	18.6	15.5	12.5	9.8	7.3
24.0	-	-	17.4	15.3	12.6	10.0	7.7	-	-	17.2	14.8	12.0	9.4	7.0
26.0	-	-	15.6	14.3	12.0	9.7	7.4	-	-	15.7	14.0	11.4	9.0	6.8
28.0	-	-	-	13.3	11.4	9.2	7.0	-	-	-	13.2	11.0	8.6	6.5
30.0	-	-	-	12.2	10.8	8.9	6.5	-	-	-	12.2	10.4	8.2	6.2
34.0	-	-	-	-	9.7	8.1	5.7	-	-	-	-	9.5	7.5	5.6
38.0	-	-	-	-	8.5	7.5	5.1	-	-	-	-	8.5	6.8	4.9
42.0	-	-	-	-	-	6.7	4.6	-	-	-	-	-	6.3	4.4
46.0	-	-	-	-	-	-	4.2	-	-	-	-	-	-	4.0

m	42m							48m						
	12m	18m	24m	30m	36m	42m	48m	12m	18m	24m	30m	36m	42m	48m
14.0	-	-	22.3	-	-	-	-	-	-	19.7	-	-	-	-
16.0	-	-	21.4	16.5	13.3	-	-	-	-	19.1	15.2	-	-	-
18.0	-	-	20.5	16.1	12.9	10.0	-	-	-	18.4	14.8	11.4	-	-
20.0	-	-	19.4	15.6	12.5	9.7	7.5	-	-	17.6	14.3	11.2	8.2	7.0
22.0	-	-	18.3	15.0	12.1	9.4	7.2	-	-	16.8	13.8	10.9	8.0	6.7
24.0	-	-	17.2	14.5	11.8	9.1	6.8	-	-	16.0	12.8	10.6	7.8	6.4
26.0	-	-	15.6	13.8	11.3	8.9	6.6	-	-	15.1	12.3	10.4	7.5	6.0
28.0	-	-	-	13.1	10.9	8.5	6.3	-	-	-	11.7	10.1	7.3	5.8
30.0	-	-	-	12.4	10.4	8.1	6.0	-	-	-	-	9.8	7.1	5.5
34.0	-	-	-	-	9.6	7.4	5.5	-	-	-	-	9.1	6.7	5.0
38.0	-	-	-	-	8.6	6.7	4.9	-	-	-	-	8.3	6.4	4.5
42.0	-	-	-	-	-	6.0	4.3	-	-	-	-	-	6.0	4.0
46.0	-	-	-	-	-	-	3.9	-	-	-	-	-	-	3.6

m	54m							60m						
	12m	18m	24m	30m	36m	42m	48m	12m	18m	24m	30m	36m	42m	48m
14.0	-	-	17.0	-	-	-	-	-	-	-	-	-	-	-
16.0	-	-	16.6	13.5	-	-	-	-	-	14.3	10.8	-	-	-
18.0	-	-	16.2	13.2	10.1	-	-	-	-	14.0	10.7	8.4	-	-
20.0	-	-	15.7	12.9	10.0	7.6	-	-	-	13.6	10.6	8.3	6.2	-
22.0	-	-	15.2	12.5	9.9	7.5	6.0	-	-	13.3	10.5	8.2	6.2	4.4
24.0	-	-	14.7	12.0	9.8	7.2	5.9	-	-	12.8	10.3	8.1	6.1	4.4
26.0	-	-	14.1	11.7	9.6	7.0	5.8	-	-	12.4	10.1	8.0	6.1	4.3
28.0	-	-	-	11.3	9.4	6.9	5.6	-	-	-	9.9	7.8	6.0	4.3
30.0	-	-	-	10.9	9.3	6.7	5.4	-	-	-	9.6	7.6	6.0	4.2
34.0	-	-	-	-	8.8	6.6	5.1	-	-	-	-	7.3	5.9	4.1
38.0	-	-	-	-	8.2	6.2	4.6	-	-	-	-	6.8	5.7	3.9
42.0	-	-	-	-	-	5.9	4.1	-	-	-	-	-	5.3	3.7
46.0	-	-	-	-	-	-	3.6	-	-	-	-	-	-	3.5

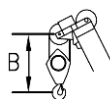


## Working speeds Vitesses de travail

## Arbeitsgeschwindigkeiten Werksnelheden

Mechanisms Mécanismes Antriebe Aandrijvingen	Speeds Vitesses Geschwindigkeiten Snelheden	Rope diameter Diamètre du câble Seildurchmesser Kabeldiameter	Single line pull Effort sur brin simple Zulässiger Seilzug je strang Toegelaten trekkraft / part	Length of ropes Longueur des cables Länge der Seile Kabellänge
Main hoist Levage sur flèche Hubwerk 1 Hijsslier 1	0 - 110 m/min	26 mm	87 kN	500 m
Auxiliary hoist Levage sur fléchette Hubwerk 2 Hijsslier 2	0 - 110 m/min	26 mm	87 kN	350 m
Boom hoist Relevage de flèche Einziehwerk Toplier hoofdmast	0 – 41 m/min	26 mm		240 m
Luffing hoist Relevage de fléchette Wippwerk Toplier wipper	0 – 50 m/min	22 mm		255 m
Slewing gear Orientation Drehwerk Zwenkwerk	0 – 2 RPM			
Travel speed Vitesse sur route Fahrgeschwindigkeit Rijsnelheid	0 – 0.75 kmh 0 – 1.5 km/h			

## Hook Block / Crane hook Crochet mouflé / Crochet simple



## Unterflasche / Hakengehänge Kraanblok / Kraanhaak

Capacity Capacité Tragfähigkeit Capaciteit	Number of sheaves Nombre de poulies Anzahl der Rollen Aantal schijven	Number of lines Nombre de brins Strangzahl Aantal parten	Weight Poids Gewicht Gewicht	"B"
SWL 140 t	8	16	1730 kg	2.5 m
SWL 61 t	3	7	930 kg	2.5 m
SWL 26 t	1	3	670 kg	2.5 m
SWL 8.7 t	-	1	370 kg	2.0 m