

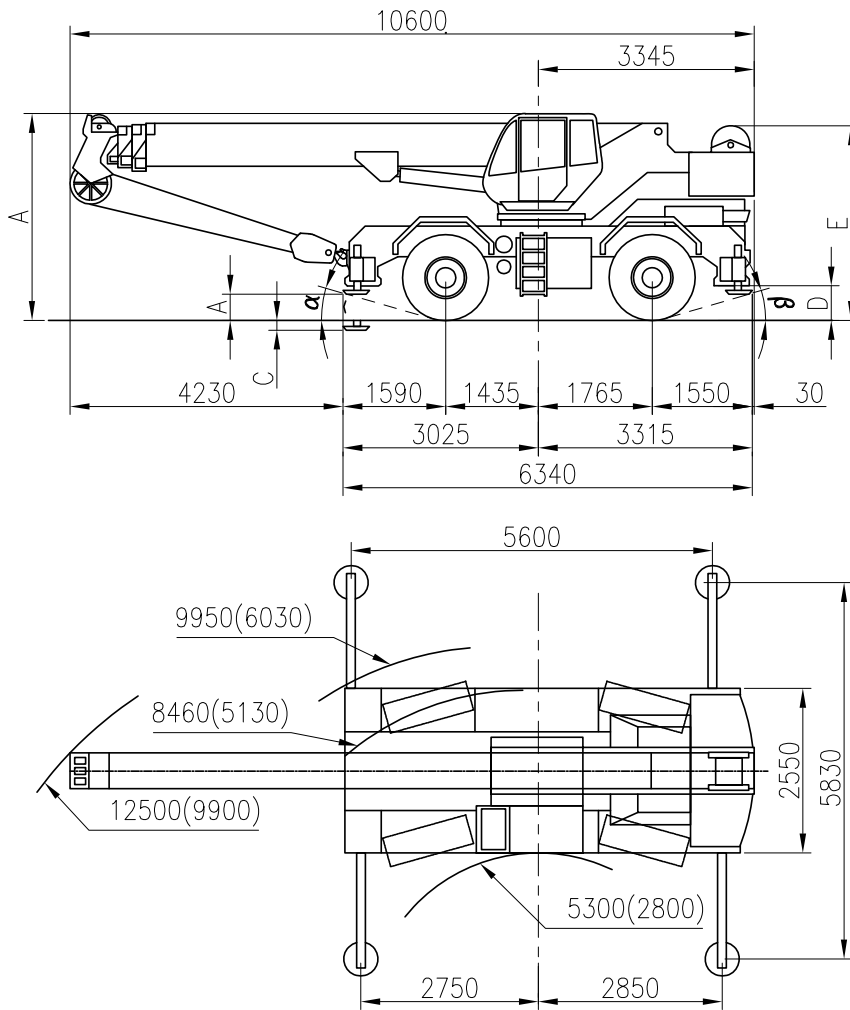


sarens
group

www.sarens.com

TEREX A350

30 TON



Values in brackets () for 4 wheel steering

Tyres/Pneus Reifen/Banden	A	E	C	B	D	α	β
14.00R24	3380	3180	150	320	370	21°	20°
16.00R25	3420	3220	190	360	410	21°	20°





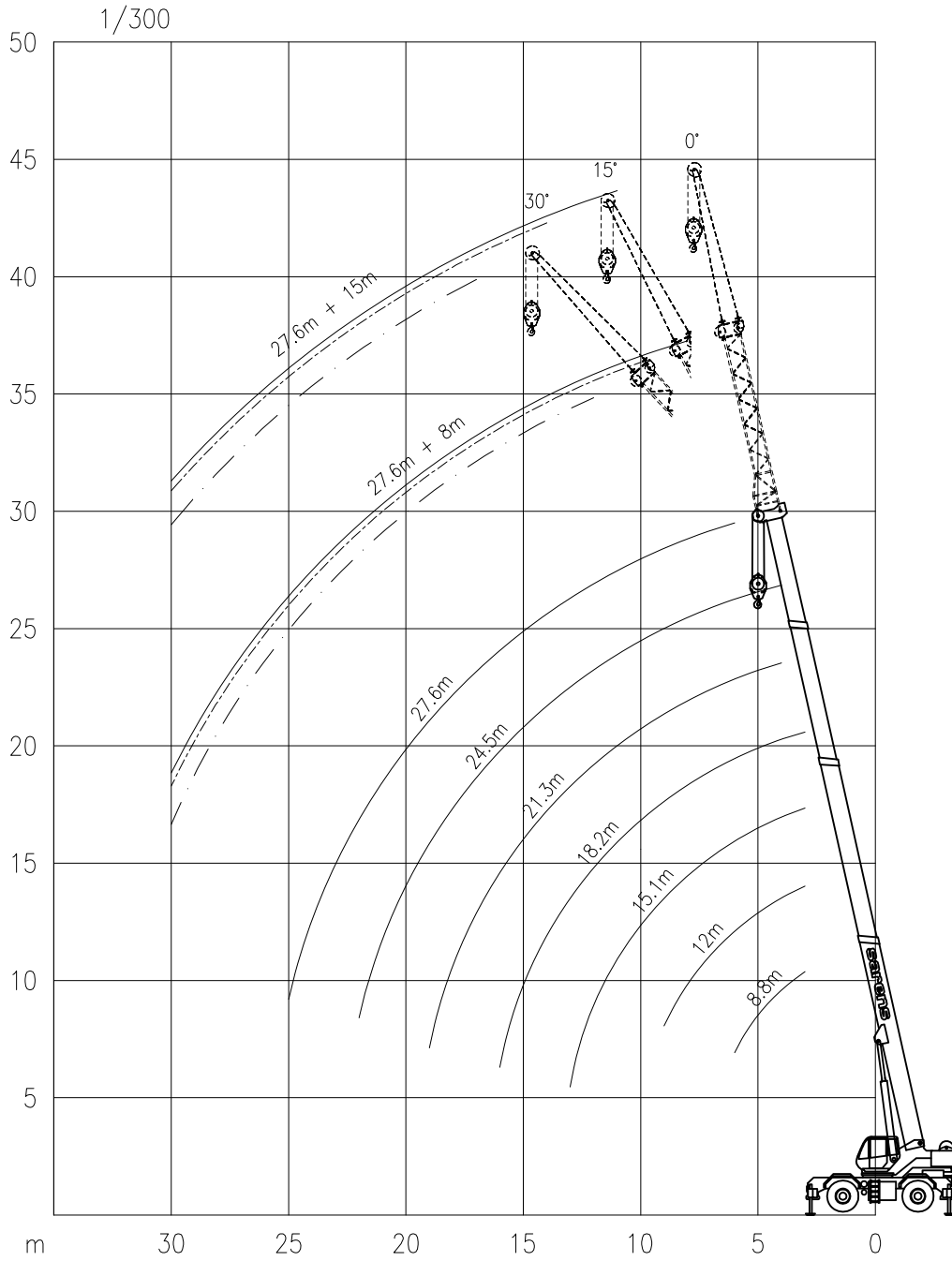
TEREX A350

Working ranges
Portées

30 TON

Arbeitsbereiche
Werkbereich

Ha + HaV



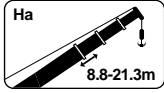


TEREX A350

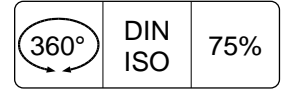
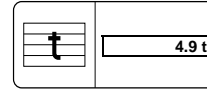
Lifting capacities
Capacités

30 TON

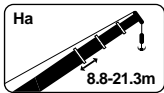
Tragfähigkeiten
Capacités



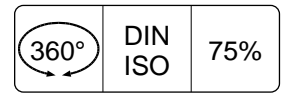
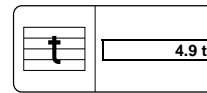
Ha



m	8.8 m	12.0 m	15.1 m	18.2 m	21.3 m	24.5 m	27.6 m
	t	t	t	t	t	t	t
3.0	30.0	22.6	22.5	21.2	-	-	-
3.5	28.0	22.6	22.5	19.3	-	-	-
4.0	25.2	22.6	20.8	17.4	15.5	12.3	-
4.5	23.0	22.6	18.9	16.0	14.2	11.5	-
5.0	20.5	20.0	17.3	14.7	13.1	10.7	-
6.0	16.2	16.3	15.0	12.6	11.3	9.4	8.8
7.0	-	12.0	12.1	11.0	9.9	8.4	7.9
8.0	-	9.4	9.5	9.5	8.8	7.5	7.1
9.0	-	7.6	7.7	7.7	7.7	6.8	6.4
10.0	-	-	6.4	6.4	6.4	6.2	5.8
11.0	-	-	5.4	5.4	5.4	5.2	5.2
12.0	-	-	4.6	4.6	4.7	4.5	4.5
13.0	-	-	4.0	4.0	4.0	3.8	3.8
14.0	-	-	-	3.5	3.5	3.4	3.4
15.0	-	-	-	3.1	3.1	2.9	2.9
16.0	-	-	-	2.7	2.7	2.6	2.6
17.0	-	-	-	-	2.4	2.3	2.3
18.0	-	-	-	-	2.2	2.0	2.0
19.0	-	-	-	-	1.7	1.8	1.8
20.0	-	-	-	-	-	1.6	1.6
21.0	-	-	-	-	-	1.4	1.4
22.0	-	-	-	-	-	1.2	1.2
23.0	-	-	-	-	-	-	1.1
24.0	-	-	-	-	-	-	1.0
25.0	-	-	-	-	-	-	0.8



Ha



m	8.8 m	12.0 m	15.1 m	18.2 m	21.3 m	24.5 m	27.6 m
	t	t	t	t	t	t	t
3.0	27.0	21.0	21.0	20.0	-	-	-
3.5	19.0	19.0	19.0	18.0	-	-	-
4.0	15.0	15.0	15.0	15.0	15.0	11.5	-
4.5	12.0	12.0	12.0	12.0	12.0	10.5	-
5.0	9.0	9.0	9.0	9.0	9.0	8.6	-
6.0	7.0	7.0	7.0	7.0	7.0	7.0	7.0
7.0	-	5.5	5.5	5.5	5.5	5.5	5.5
8.0	-	4.5	4.5	4.5	4.5	4.3	4.3
9.0	-	3.5	3.5	3.5	3.5	3.4	3.4
10.0	-	-	3.0	3.0	3.0	2.8	2.8
11.0	-	-	2.6	2.5	2.5	2.3	2.3
12.0	-	-	2.1	2.0	2.0	1.9	1.9
13.0	-	-	1.8	1.8	1.8	1.5	1.5
14.0	-	-	-	1.5	1.5	1.3	1.3
15.0	-	-	-	1.2	1.2	1.1	1.0
16.0	-	-	-	1.0	1.0	0.9	0.9
17.0	-	-	-	-	0.9	0.7	0.7
18.0	-	-	-	-	0.7	0.6	0.6
19.0	-	-	-	-	0.5	-	-

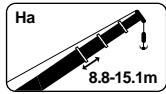


TEREX A350

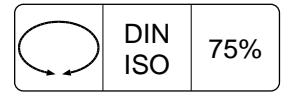
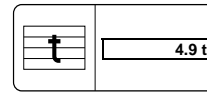
Lifting capacities
Capacités

30 TON

Tragfähigkeiten
Capaciteiten

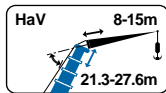


Ha

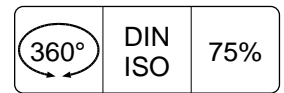
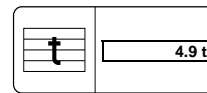


m	360°	
	8.8 m	12.0 m
3.0	-	-
3.5	-	-
4.0	-	-
4.5	-	-
5.0	4.8	-
6.0	3.4	-
7.0	2.5	2.5
8.0	-	1.8
9.0	-	1.3
10.0	-	0.9
11.0	-	-
12.0	-	-
13.0	-	-

8.8 m	12.0 m	15.1 m	0° (over rear)	
			t	t
15.4	-	-	3.0	-
14.0	12.1	-	3.5	-
13.6	12.1	9.1	4.0	-
12.0	12.1	9.1	4.5	-
10.8	10.8	9.1	5.0	-
7.8	7.8	7.8	6.0	-
5.8	6.0	6.0	7.0	-
-	4.6	4.7	8.0	-
-	3.6	3.6	9.0	-
-	2.9	2.9	10.0	-
-	-	2.4	11.0	-
-	-	1.9	12.0	-
-	-	1.5	13.0	-



HaV

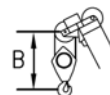


m	21.3 m		24.5 m		27.6 m					
	8.0 m		8.0 m		8.0 m			15.0 m		
	0°	0°	0°	15°	30°	0°	15°	30°		
7.0	5.4	-	-	-	-	-	-	-	-	-
8.0	5.0	3.8	4.1	-	-	-	-	-	-	-
9.0	4.7	3.8	3.9	-	-	-	-	-	-	-
10.0	4.4	3.8	3.6	3.1	-	-	-	-	-	-
11.0	4.1	3.5	3.3	2.9	-	1.9	-	-	-	-
12.0	3.9	3.3	3.1	2.7	2.4	1.9	-	-	-	-
13.0	3.7	3.0	2.9	2.6	2.3	1.8	-	-	-	-
14.0	3.5	2.8	2.7	2.4	2.2	1.7	1.3	-	-	-
15.0	3.4	2.7	2.6	2.3	2.1	1.7	1.3	-	-	-
16.0	2.9	2.5	2.4	2.2	2.0	1.6	1.3	-	-	-
17.0	2.6	2.4	2.3	2.1	1.9	1.5	1.2	1.0	-	-
18.0	2.2	2.2	2.2	2.0	1.9	1.5	1.2	1.0	-	-
19.0	2.0	2.1	1.9	1.9	1.8	1.4	1.2	1.0	-	-
20.0	1.7	2.0	1.7	1.7	1.7	1.4	1.1	1.0	-	-
21.0	1.5	1.8	1.5	1.5	1.5	1.3	1.1	0.9	-	-
22.0	1.3	1.6	1.4	1.4	1.4	1.3	1.1	0.9	-	-
23.0	1.1	1.4	1.3	1.3	1.3	1.2	1.0	0.9	-	-
24.0	1.0	1.2	1.2	1.2	1.2	1.2	1.0	0.9	-	-
25.0	0.9	1.0	1.1	1.1	1.1	1.2	1.0	0.9	-	-
26.0	0.7	0.9	1.0	1.0	1.0	1.1	1.0	0.9	-	-
27.0	-	0.8	0.9	0.9	0.9	1.0	1.0	0.8	-	-
28.0	-	0.7	0.8	0.8	0.8	0.9	0.9	0.8	-	-
29.0	-	0.6	0.7	0.7	0.7	0.8	0.9	0.8	-	-
30.0	-	0.5	0.6	0.6	0.6	0.7	0.9	0.8	-	-

Hook block/Crane hook
Crochet-mouflé/Crochet simple



38 kN Ø 15mm



Unterflasche/Hakengehänge
Kraanblok/Kraanhaak

Capacity / Capaciteit	Number of sheaves / Nombre de poulies Anzahl der Rollen / Aantal schijven	Number of lines / Nombre de brins Strangzahl / Aantal parten	Weight / Poids Gewicht / Gewicht	"B"
30t	5	10	550kg	2.55m