

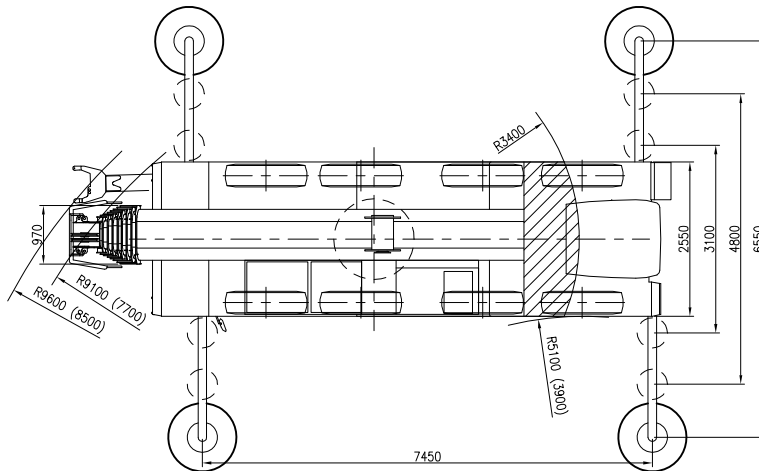
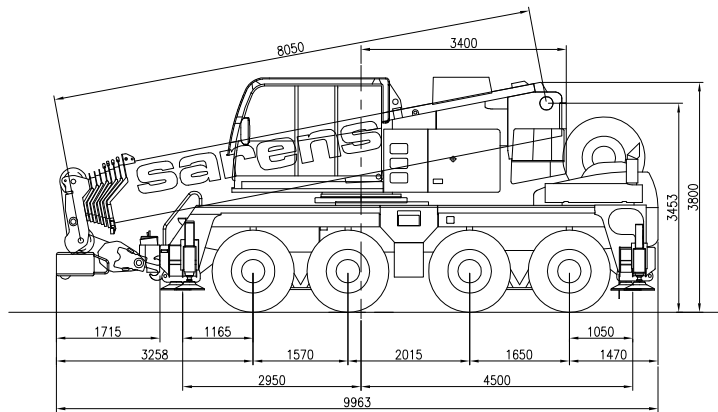


**sarens**  
group

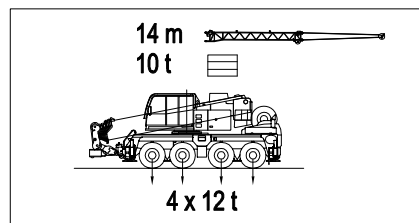
[www.sarens.com](http://www.sarens.com)

# TEREX AC 60

# 60 TON



( ): With Independent rear axle steering / Avec direction indépendante des essieux AR / Mit unabhängiger Hinterachslenkung / met onafhankelijke achter as sturing



nothing too heavy, nothing too high





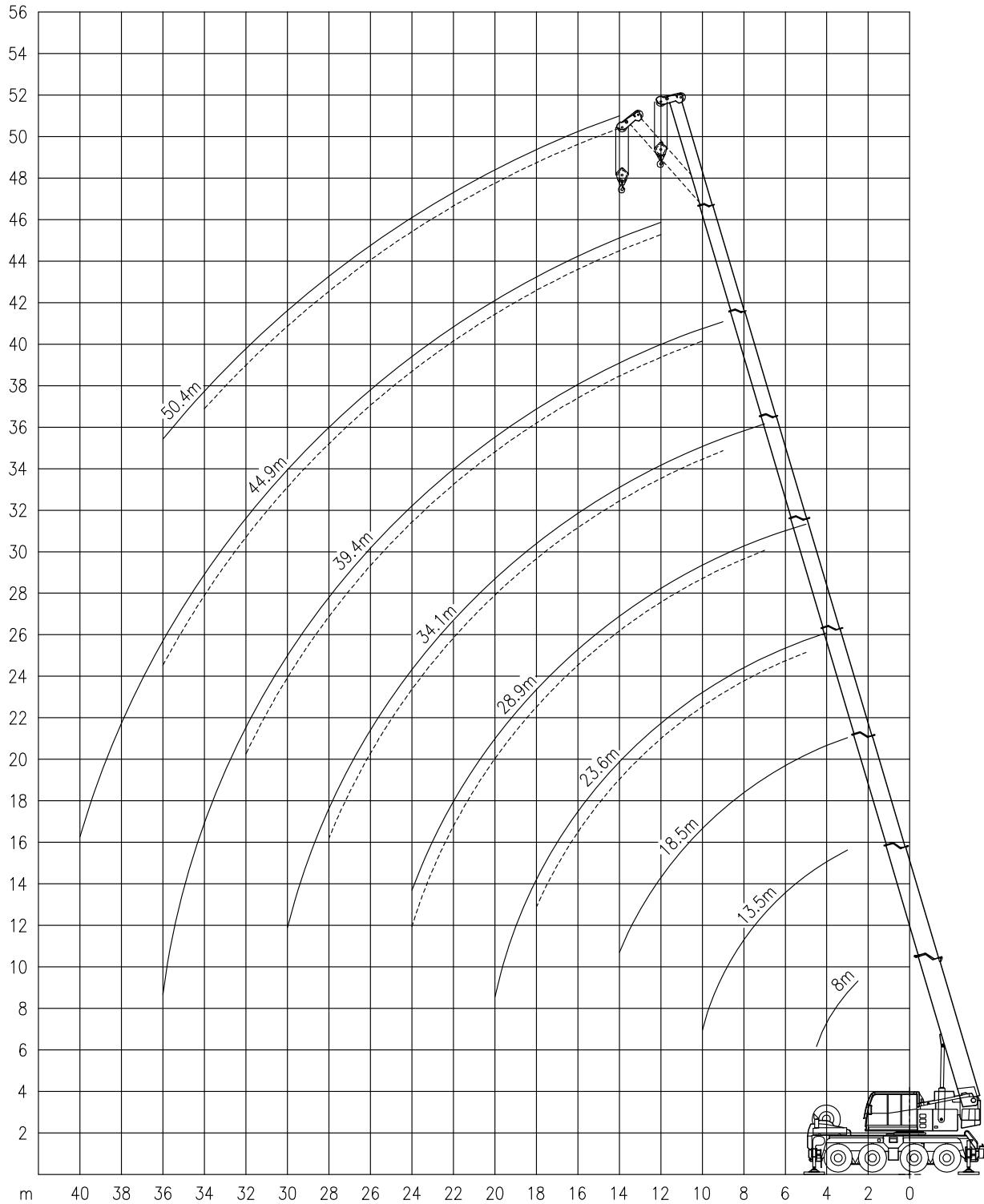
# TEREX AC 60

Working ranges  
Portées

## 60 TON

Arbeitsbereiche  
Werkbereich

### Ha



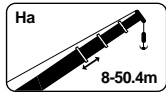


# TEREX AC 60

## 60 TON

Lifting capacities  
Capacités

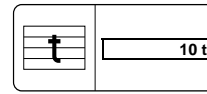
Tragfähigkeiten  
Capaciteiten



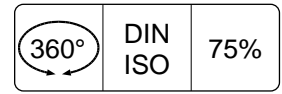
Ha



6.55m



10 t



360°

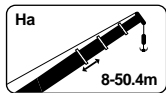
DIN  
ISO

75%

	8.0 m	13.4 m	18.5 m	23.6 m	28.9 m	34.1 m	39.4 m	44.9 m	50.4 m
m	t	t	t	t	t	t	t	t	t
2.5	70.0 !**	-	-	-	-	-	-	-	-
3.0	60.0 !*	-	-	-	-	-	-	-	-
3.0	54.8	50.6	47.1	-	-	-	-	-	-
3.5	50.0	47.1	43.9	-	-	-	-	-	-
4.0	45.8	44.1	40.7	31.7	-	-	-	-	-
4.5	42.0	41.2	38.2	29.9	-	-	-	-	-
5.0	-	37.6	35.6	28.2	25.7	-	-	-	-
6.0	-	31.3	30.8	25.3	23.5	-	-	-	-
7.0	-	26.0	25.4	23.0	21.6	17.7	-	-	-
8.0	-	22.5	21.5	21.1	19.9	16.4	-	-	-
9.0	-	18.6	19.0	18.1	17.3	15.2	12.3	-	-
10.0	-	15.5	15.9	15.2	15.0	13.7	11.5	-	-
12.0	-	-	12.3	12.2	12.2	10.6	10.1	8.7	-
14.0	-	-	9.6	9.5	9.4	8.9	8.5	7.7	6.1
16.0	-	-	-	8.2	7.6	7.6	7.3	6.8	5.8
18.0	-	-	-	6.8	6.7	6.2	5.9	5.6	5.5
20.0	-	-	-	5.7	5.6	5.4	4.8	4.9	4.7
22.0	-	-	-	-	4.7	4.6	4.2	4.4	3.9
24.0	-	-	-	-	4.0	3.9	3.9	3.6	3.1
26.0	-	-	-	-	-	3.3	3.5	3.0	2.5
28.0	-	-	-	-	-	3.1	2.9	2.5	2.0
30.0	-	-	-	-	-	2.8	2.5	2.1	1.6
32.0	-	-	-	-	-	-	2.1	1.7	1.2
34.0	-	-	-	-	-	-	1.8	1.4	0.9
36.0	-	-	-	-	-	-	1.5	1.1	0.6
38.0	-	-	-	-	-	-	-	0.8	-
40.0	-	-	-	-	-	-	-	0.6	-

!\* Over rear / En arrière / Nach hinten / Over achterzijde.

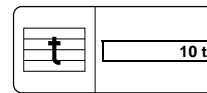
!\*\* Over rear and hoist rope reeving 1X13



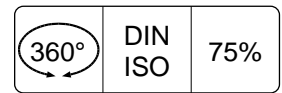
Ha



4.8m



10 t



360°

DIN  
ISO

75%

	8.0 m	13.4 m	18.5 m	23.6 m	28.9 m	34.1 m	39.4 m	44.9 m	50.4 m
m	t	t	t	t	t	t	t	t	t
3.0	49.6	48.7	47.1	-	-	-	-	-	-
3.5	44.8	43.8	43.9	-	-	-	-	-	-
4.0	40.7	39.9	38.4	31.7	-	-	-	-	-
4.5	37.1	37.4	32.4	29.6	-	-	-	-	-
5.0	-	32.2	27.9	25.9	23.5	-	-	-	-
6.0	-	23.0	23.6	20.9	18.9	-	-	-	-
7.0	-	17.3	18.6	18.4	17.0	13.7	-	-	-
8.0	-	13.6	14.8	14.7	14.4	12.7	-	-	-
9.0	-	11.1	12.2	12.8	12.1	11.6	10.5	-	-
10.0	-	9.2	10.2	10.8	10.3	10.2	9.2	-	-
12.0	-	-	7.5	8.0	8.0	7.9	7.1	6.9	-
14.0	-	-	5.8	6.3	6.2	6.1	5.9	5.9	4.9
16.0	-	-	-	5.0	4.9	5.1	5.0	4.7	3.9
18.0	-	-	-	4.1	4.0	4.3	4.1	3.7	3.1
20.0	-	-	-	3.4	3.3	3.6	3.4	3.0	2.5
22.0	-	-	-	-	2.7	3.0	2.8	2.5	1.9
24.0	-	-	-	-	2.3	2.5	2.3	2.0	1.5
26.0	-	-	-	-	-	2.2	1.9	1.6	1.1
28.0	-	-	-	-	-	1.8	1.6	1.2	0.7
30.0	-	-	-	-	-	1.6	1.3	0.9	-
32.0	-	-	-	-	-	-	1.0	0.6	-
34.0	-	-	-	-	-	-	0.8	-	-

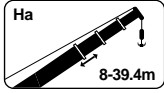


# TEREX AC 60

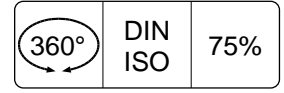
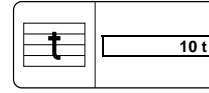
Lifting capacities  
Capacités

# 60 TON

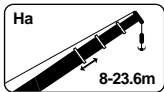
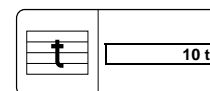
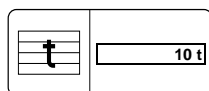
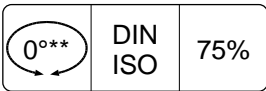
Tragfähigkeiten  
Capacités



Ha

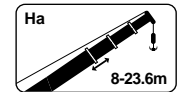


	8.0 m	13.4 m	18.5 m	23.6 m	28.9 m	34.1 m	39.4 m
m	t	t	t	t	t	t	t
3.0	41.6	-	-	-	-	-	-
3.5	33.1	-	-	-	-	-	-
4.0	25.6	26.3	-	-	-	-	-
4.5	20.7	21.4	-	-	-	-	-
5.0	-	17.8	19.2	-	-	-	-
6.0	-	13.1	14.3	14.8	13.3	-	-
7.0	-	10.1	11.2	11.8	11.2	10.3	-
8.0	-	8.0	9.0	9.6	9.5	8.8	-
9.0	-	6.5	7.5	8.0	7.9	7.9	7.4
10.0	-	5.4	6.3	6.8	6.7	7.1	6.5
12.0	-	-	4.6	5.0	5.0	5.3	5.1
14.0	-	-	3.4	3.9	3.8	4.1	3.9
16.0	-	-	-	3.0	2.9	3.3	3.0
18.0	-	-	-	2.4	2.3	2.6	2.4
20.0	-	-	-	1.9	1.8	2.1	1.9
22.0	-	-	-	-	1.4	1.7	1.5
24.0	-	-	-	-	1.0	1.4	1.1
26.0	-	-	-	-	-	1.0	0.7
28.0	-	-	-	-	-	0.8	-



Ha

Ha



	8.0 m	13.4 m	18.5 m	23.6 m
m	t	t	t	t
3.0	-	-	-	-
3.5	-	-	-	-
4.0	17.6	-	-	-
4.5	15.7	16.3	-	-
5.0	-	14.8	-	-
6.0	-	12.3	13.2	-
7.0	-	10.3	11.1	11.7
8.0	-	8.8	9.7	10.2
9.0	-	7.5	8.4	8.9
10.0	-	6.4	7.3	7.8
12.0	-	-	5.8	6.3
14.0	-	-	4.6	5.0
16.0	-	-	-	4.2
18.0	-	-	-	3.4
20.0	-	-	-	2.8

	8.0 m	13.4 m	18.5 m	23.6 m
m	t	t	t	t
3.0	11.2	11.7	12.5	-
3.5	10.0	10.4	11.1	-
4.0	8.9	9.3	10.1	10.5
4.5	7.8	8.3	9.1	9.6
5.0	-	7.5	8.3	8.7
6.0	-	6.2	7.0	7.4
7.0	-	5.0	5.9	6.4
8.0	-	4.1	5.0	5.4
9.0	-	3.4	4.2	4.6
10.0	-	2.8	3.5	4.0
12.0	-	-	2.7	3.0
14.0	-	-	1.9	2.4
16.0	-	-	-	1.7
18.0	-	-	-	1.2
20.0	-	-	-	0.9

\*180° Over front.  
\*\*0° Over rear.

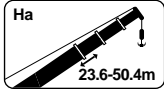


# TEREX AC 60

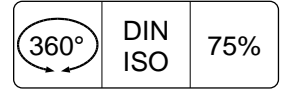
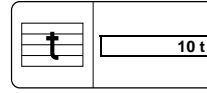
Lifting capacities  
Capacités

# 60 TON

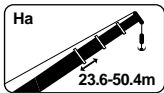
Tragfähigkeiten  
Capacités



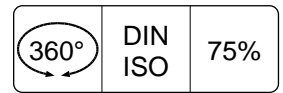
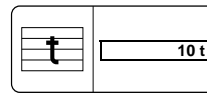
Ha Offset 25°



	23.6 m	28.9 m	34.1 m	39.4 m	44.9 m	50.4 m
m	t	t	t	t	t	t
5.0	4.7	-	-	-	-	-
6.0	4.4	-	-	-	-	-
7.0	4.2	4.4	-	-	-	-
8.0	4.0	4.2	-	-	-	-
9.0	3.8	4.0	4.2	-	-	-
10.0	3.6	3.9	4.0	4.0	-	-
12.0	3.3	3.6	3.8	3.8	3.9	-
14.0	3.2	3.4	3.7	3.6	3.8	3.7
16.0	3.1	3.3	3.5	3.4	3.6	3.6
18.0	3.0	3.1	3.4	3.3	3.4	3.5
20.0	-	3.0	3.2	3.2	3.2	3.3
22.0	-	3.0	3.1	3.1	3.0	3.1
24.0	-	3.0	3.0	3.0	2.8	3.0
26.0	-	-	2.7	2.9	2.5	2.5
28.0	-	-	2.5	2.8	2.3	1.9
30.0	-	-	-	2.3	1.9	1.5
32.0	-	-	-	1.9	1.5	1.1
34.0	-	-	-	-	1.2	0.7
36.0	-	-	-	-	0.9	-



Ha Offset 25°



	23.6 m	28.9 m	34.1 m	39.4 m	44.9 m	50.4 m
m	t	t	t	t	t	t
5.0	4.7	-	-	-	-	-
6.0	4.4	-	-	-	-	-
7.0	4.2	4.4	-	-	-	-
8.0	4.0	4.2	-	-	-	-
9.0	3.8	4.0	4.2	-	-	-
10.0	3.6	3.9	4.0	4.0	-	-
12.0	3.3	3.6	3.8	3.8	3.9	-
14.0	3.2	3.4	3.7	3.6	3.8	3.7
16.0	3.1	3.3	3.5	3.4	3.6	3.6
18.0	3.0	3.1	3.4	3.3	3.4	3.2
20.0	-	3.0	3.2	3.2	3.0	2.5
22.0	-	2.7	3.0	2.7	2.4	1.9
24.0	-	2.2	2.5	2.2	1.9	1.4
26.0	-	-	2.1	1.8	1.5	0.9
28.0	-	-	1.7	1.5	1.1	-
30.0	-	-	-	1.1	0.8	-
32.0	-	-	-	0.8	-	-



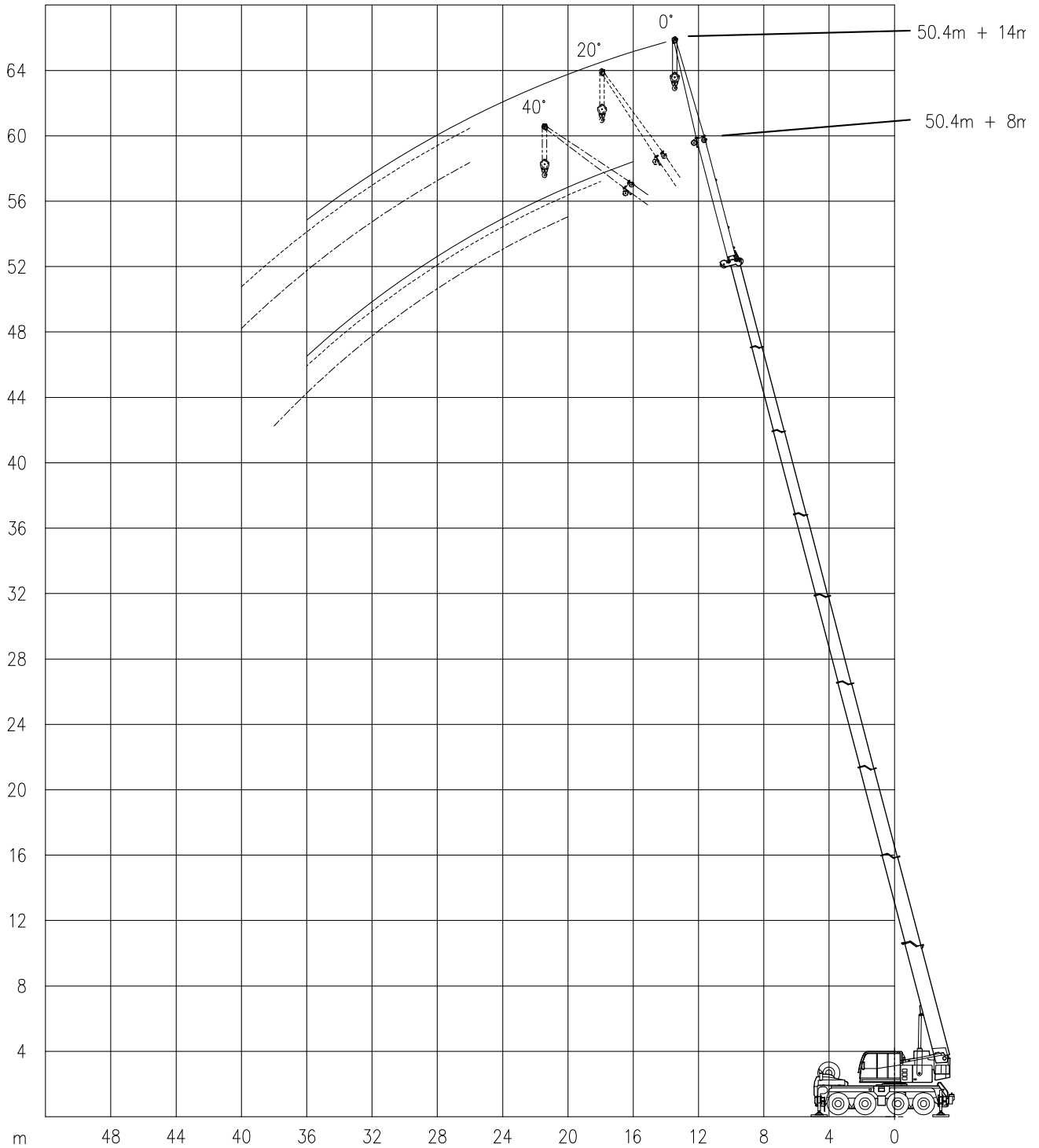
# TEREX AC 60

Working ranges  
Portées

## 60 TON

Arbeitsbereiche  
Werkbereich

### HaV



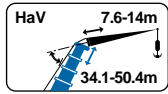


# TEREX AC 60

Lifting capacities  
Capacités

# 60 TON

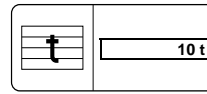
Tragfähigkeiten  
Capacités



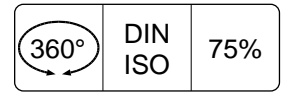
HaV



6.55m



10 t



360°

DIN  
ISO

75%

m	34.1 m						39.4 m					
	7.6 m			14.0 m			7.6 m			14.0 m		
	0°	20°	40°	0°	20°	40°	0°	20°	40°	0°	20°	40°
t	t	t	t	t	t	t	t	t	t	t	t	t
10.0	9.1	-	-	-	-	-	-	-	-	-	-	-
12.0	8.3	6.1	-	4.8	-	-	7.3	-	-	-	-	-
14.0	7.5	5.8	4.8	4.5	-	-	6.5	5.4	-	4.2	-	-
16.0	6.7	5.5	4.6	4.2	3.0	-	5.7	5.3	4.3	4.0	-	-
18.0	5.4	5.2	4.5	3.9	2.9	2.3	4.9	5.1	4.2	3.8	2.9	-
20.0	4.4	4.8	4.5	3.7	2.8	2.2	4.3	4.7	4.1	3.6	2.8	-
22.0	3.8	3.9	4.1	3.5	2.6	2.2	3.9	3.8	3.9	3.4	2.6	2.2
24.0	3.5	3.1	3.3	3.1	2.5	2.1	3.4	3.4	3.3	3.0	2.5	2.2
26.0	3.1	3.0	2.9	2.5	2.4	2.1	2.7	3.0	3.1	2.5	2.4	2.1
28.0	2.7	2.7	2.8	2.3	2.3	2.0	2.3	2.5	2.6	2.4	2.4	2.1
30.0	2.4	2.5	2.5	2.1	2.0	2.0	2.1	2.2	2.1	2.0	2.0	2.1
32.0	2.0	2.2	-	2.0	1.8	1.8	2.0	2.0	2.0	1.6	1.9	1.9
34.0	1.7	1.8	-	1.8	1.7	1.7	1.7	1.8	1.8	1.5	1.6	1.8
36.0	1.4	1.5	-	1.6	1.6	1.6	1.4	1.5	-	1.3	1.4	1.5
38.0	1.2	-	-	1.4	1.5	0.6	1.2	1.3	-	1.2	1.2	1.3
40.0	-	-	-	1.1	1.3	-	1.0	-	-	1.1	1.1	1.3
42.0	-	-	-	0.9	1.0	-	-	-	-	0.9	1.0	-
44.0	-	-	-	0.8	0.8	-	-	-	-	0.7	0.8	-
46.0	-	-	-	-	-	-	-	-	-	0.5	0.6	-

m	44.9 m						50.4 m					
	7.6 m			14.0 m			7.6 m			14.0 m		
	0°	20°	40°	0°	20°	40°	0°	20°	40°	0°	20°	40°
t	t	t	t	t	t	t	t	t	t	t	t	t
14.0	5.1	-	-	-	-	-	-	-	-	-	-	-
16.0	4.8	4.3	-	-	-	-	3.7	-	-	-	-	-
18.0	4.5	4.0	3.7	3.1	-	-	3.5	3.0	-	2.6	-	-
20.0	4.2	3.7	3.5	2.9	2.7	-	3.3	2.9	2.9	2.5	-	-
22.0	3.7	3.4	3.3	2.8	2.5	-	3.1	2.9	2.8	2.4	2.2	-
24.0	3.0	3.3	3.2	2.7	2.4	2.1	3.0	2.8	2.7	2.3	2.1	-
26.0	2.7	2.7	2.9	2.5	2.3	2.0	2.5	2.8	2.6	2.2	2.0	1.9
28.0	2.5	2.4	2.4	2.1	2.2	1.9	2.0	2.3	2.5	2.0	1.8	1.8
30.0	2.0	2.2	2.3	1.8	2.1	1.9	1.5	1.8	2.0	1.7	1.7	1.7
32.0	1.7	1.8	2.0	1.7	1.7	1.8	1.2	1.4	1.6	1.3	1.6	1.6
34.0	1.3	1.5	1.6	1.5	1.6	1.6	0.8	1.0	1.2	1.0	1.4	1.6
36.0	1.0	1.2	1.3	1.2	1.5	1.5	0.5	0.7	0.8	0.7	1.1	1.3
38.0	0.8	0.9	1.0	0.9	1.2	1.4	-	-	0.6	-	0.8	1.0
40.0	0.5	0.7	-	0.7	0.9	1.1	-	-	-	-	0.5	0.7
42.0	-	-	-	-	0.7	0.8	-	-	-	-	-	-

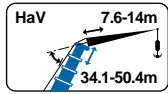


# TEREX AC 60

# 60 TON

Lifting capacities  
Capacités

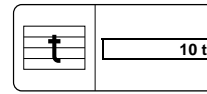
Tragfähigkeiten  
Capaciteiten



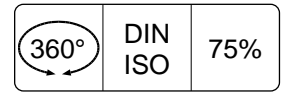
HaV



4.8m



10 t



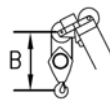
360°

DIN  
ISO

75%

m	34.1 m						39.4 m					
	7.6 m			14.0 m			7.6 m			14.0 m		
	0°	20°	40°	0°	20°	40°	0°	20°	40°	0°	20°	40°
t	t	t	t	t	t	t	t	t	t	t	t	t
10.0	8.3	-	-	-	-	-	-	-	-	-	-	-
12.0	6.4	6.1	-	4.8	-	-	5.9	-	-	-	-	-
14.0	5.2	5.6	4.8	4.5	-	-	5.4	5.2	-	4.2	-	-
16.0	4.7	4.4	4.6	4.0	3.0	-	4.4	4.4	4.3	3.6	-	-
18.0	4.1	3.9	3.8	3.3	2.9	2.3	3.7	3.9	3.8	3.2	2.9	-
20.0	3.3	3.6	3.5	3.1	2.8	2.2	3.3	3.2	3.4	2.9	2.8	-
22.0	2.8	3.0	3.1	2.7	2.6	2.2	2.8	3.0	2.8	2.4	2.5	2.2
24.0	2.6	2.6	2.6	2.4	2.3	2.1	2.3	2.5	2.6	2.2	2.4	2.2
26.0	2.2	2.3	2.4	2.0	2.1	2.0	1.9	2.1	2.2	2.0	1.9	2.1
28.0	1.8	2.0	2.0	1.8	2.0	2.0	1.6	1.7	1.8	1.7	1.8	1.8
30.0	1.5	1.6	1.7	1.6	1.6	1.8	1.3	1.4	1.5	1.4	1.7	1.7
32.0	1.3	1.4	-	1.4	1.5	1.5	1.0	1.1	1.2	1.1	1.4	1.5
34.0	1.1	1.1	-	1.2	1.4	1.4	0.7	0.8	0.9	0.8	1.1	1.3
36.0	0.8	0.9	-	1.0	1.1	1.2	-	0.6	-	0.6	0.9	1.0
38.0	0.6	-	-	0.8	0.9	-	-	-	-	-	0.6	0.7
40.0	-	-	-	0.6	0.7	-	-	-	-	-	-	0.5
42.0	-	-	-	-	-	-	-	-	-	-	-	-

m	44.9 m						50.4 m					
	7.6 m			14.0 m			7.6 m			14.0 m		
	0°	20°	40°	0°	20°	40°	0°	20°	40°	0°	20°	40°
t	t	t	t	t	t	t	t	t	t	t	t	t
14.0	4.7	-	-	-	-	-	-	-	-	-	-	-
16.0	3.8	4.2	-	-	-	-	3.6	-	-	-	-	-
18.0	3.6	3.4	3.7	2.9	-	-	2.8	3.0	-	2.6	-	-
20.0	2.9	3.2	3.2	2.5	2.7	-	2.2	2.6	2.9	2.2	-	-
22.0	2.4	2.7	2.9	2.4	2.4	-	1.7	2.0	2.3	1.7	2.2	-
24.0	1.9	2.2	2.4	1.9	2.1	2.1	1.2	1.5	1.8	1.3	1.9	-
26.0	1.5	1.7	1.9	1.5	1.9	1.9	0.8	1.1	1.3	0.9	1.4	1.9
28.0	1.1	1.4	1.5	1.2	1.6	1.8	0.5	0.8	1.0	0.6	1.1	1.5
30.0	0.8	1.0	1.2	0.9	1.3	1.6	-	-	0.6	-	0.7	1.1
32.0	0.5	0.7	0.8	0.6	1.0	1.3	-	-	-	-	-	0.8
34.0	-	-	0.6	-	0.7	1.0	-	-	-	-	-	-
36.0	-	-	-	-	-	0.7	-	-	-	-	-	-
38.0	-	-	-	-	-	-	-	-	-	-	-	-



## Hook block/Crane hook

## Unterflasche/Hakengehänge

Capacity Capacité Tragfähigkeit Capaciteit	Number of sheaves Nombre de poulies Anzahl der rollen Aantal schijven	Number of lines Nombre de brins Strangzahl Aantal parten	Weight Poids Gewicht Gewicht	"B"
SWL 57.9 t	5	11	650 kg	2.0 m
SWL 37.6 t	3	7	550 kg	1.3 m
SWL 16.4 t	1	3	350 kg	1.1 m
SWL 5.5 t	-	1	170 kg	0.8 m