



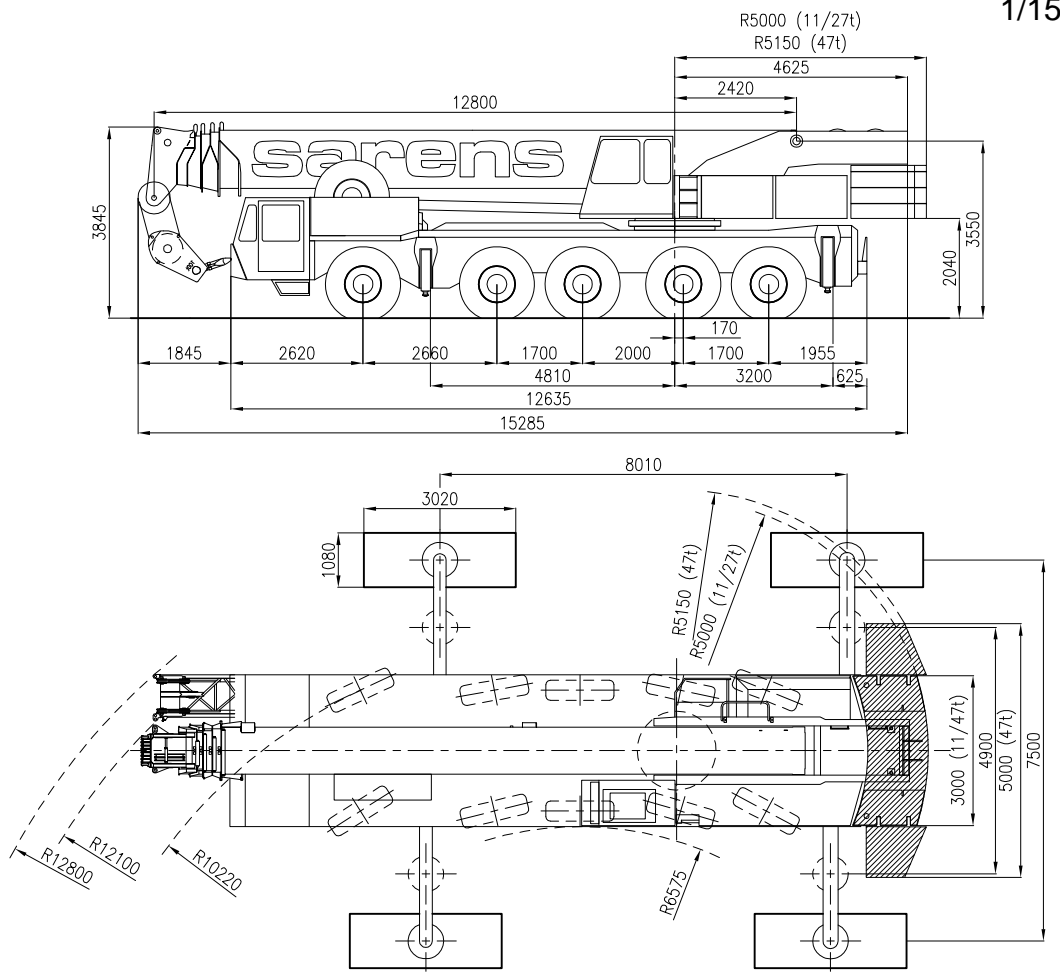
**sarens**  
group

[www.sarens.com](http://www.sarens.com)

**TEREX AC 435 V**

**150 TON**

1/150



Axle load / Charge par essieu / Achslast / Aslast  
Total weight / Poids total / Gesamtgewicht / Totaal gewicht

: 5 x 12 t (11/27 t)  
: 60 t (47 t)





# TEREX AC 435 V

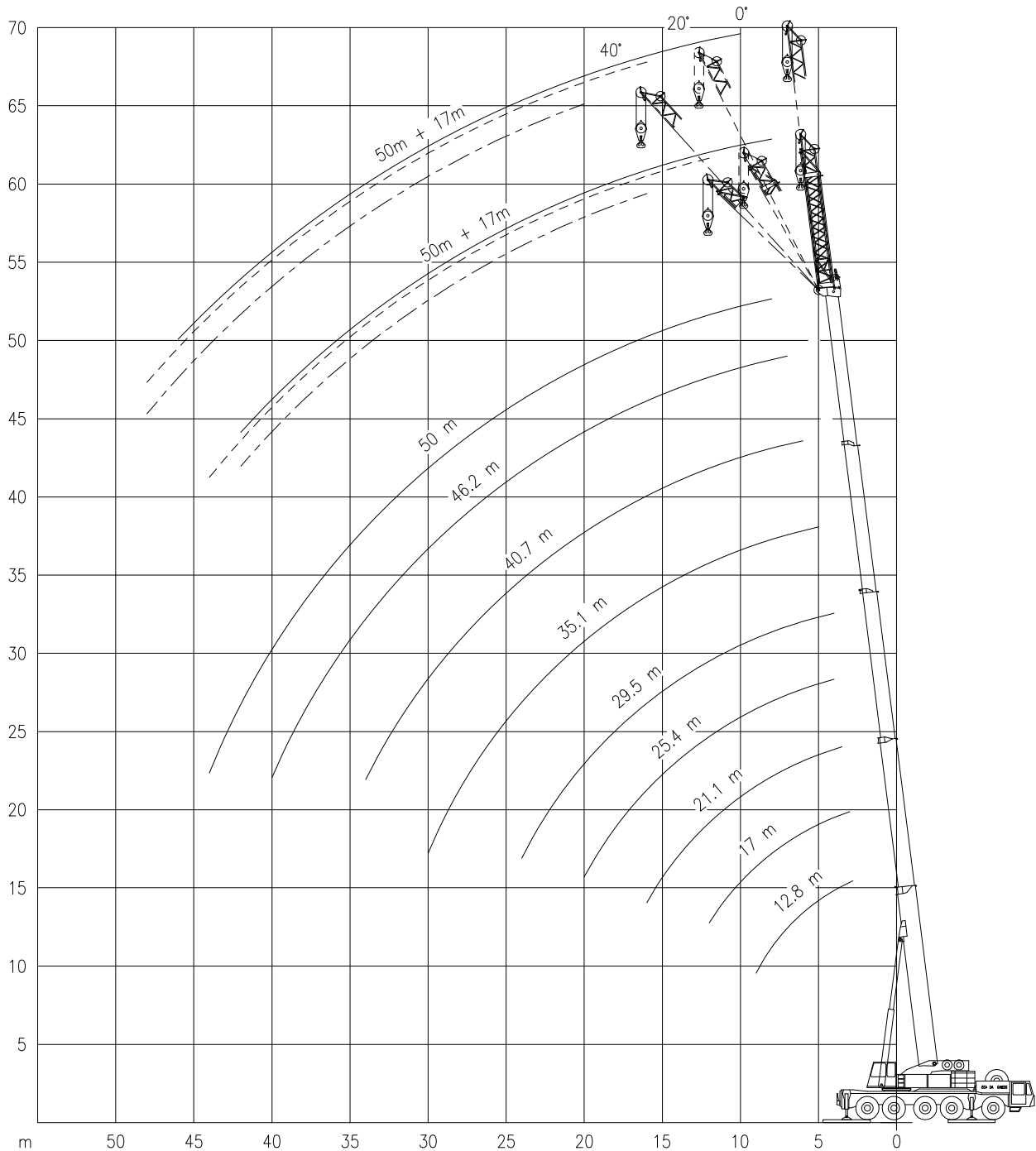
Working ranges  
Portées

## 150 TON

Arbeitsbereiche  
Werkbereich

Ha / HaV

1/400



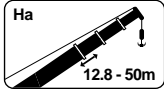


# TEREX AC 435 V

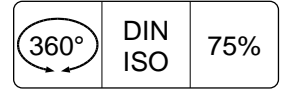
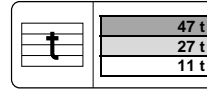
# 150 TON

Lifting capacities at main boom  
Capacités à la fleche principale

Tragfähigkeiten am Hauptausleger  
Capaciteiten aan de hoofdgiëk



Ha



m	12.8m		17.0m		21.1m		25.4m		29.5m		35.1m		40.7m		46.2m		50.0m	
	t	t	t	t	t	t	t	t**	t	t**	t	t**	t	t**	t	t	t	t
2.8	150*	-	-	-	-	-	-	-	-	-	-	-	-	-	-	-	-	-
3.0	130	-	80.0	-	-	-	-	-	-	-	-	-	-	-	-	-	-	-
3.5	120	-	80.0	-	80.0	-	-	-	-	-	-	-	-	-	-	-	-	-
4.0	110	-	80.0	-	80.0	-	70.0	35.0	55.0	35.0	-	-	-	-	-	-	-	-
4.5	102	-	80.0	-	80.0	-	68.0	35.0	55.0	35.0	-	-	-	-	-	-	-	-
5.0	95.8	-	80.0	-	80.0	-	64.0	35.0	55.0	35.0	35.0	30.0	-	-	-	-	-	-
6.0	83.5	-	80.0	-	77.5	-	59.0	35.0	53.5	35.0	35.0	30.0	33.5	19.0	-	-	-	-
7.0	72.6	-	71.5	-	70.3	-	54.0	35.0	49.5	34.8	35.0	29.3	32.5	19.0	25.0	-	-	-
8.0	63.3	-	62.1	-	61.4	-	49.5	35.0	46.5	33.0	35.0	27.8	31.3	19.0	25.0	-	-	19.0
9.0	55.3	-	54.7	-	54.0	-	46.0	35.0	43.5	31.2	35.0	26.2	30.2	19.0	25.0	-	-	19.0
10.0	-	-	48.5	-	47.8	-	42.5	33.0	40.5	29.4	34.0	24.6	28.9	19.0	24.6	-	-	19.0
12.0	-	-	38.8	-	38.1	-	36.5	29.6	35.0	25.8	30.2	21.6	26.6	16.8	23.0	-	-	19.0
14.0	-	-	-	-	30.3	-	31.0	25.2	30.5	23.0	27.0	18.8	24.4	14.8	21.4	-	-	18.6
16.0	-	-	-	-	24.3	-	24.9	20.4	24.7	20.6	24.2	16.4	22.2	13.0	19.6	-	-	17.7
18.0	-	-	-	-	-	-	20.5	16.9	20.3	17.1	21.8	14.5	20.2	11.6	17.8	-	-	16.6
20.0	-	-	-	-	-	-	17.1	14.2	16.9	14.4	19.2	12.9	18.2	10.6	16.2	-	-	15.4
22.0	-	-	-	-	-	-	-	-	14.3	12.2	16.5	11.9	16.6	9.6	14.8	-	-	14.2
24.0	-	-	-	-	-	-	-	-	12.1	10.5	14.3	10.7	14.4	8.8	13.5	-	-	13.0
26.0	-	-	-	-	-	-	-	-	-	-	12.5	9.3	12.6	8.2	12.3	-	-	11.8
28.0	-	-	-	-	-	-	-	-	-	-	11.0	8.0	11.1	7.7	11.1	-	-	10.8
30.0	-	-	-	-	-	-	-	-	-	-	9.7	7.0	9.8	7.1	9.7	-	-	9.6
32.0	-	-	-	-	-	-	-	-	-	-	-	-	8.6	6.2	8.6	-	-	8.4
34.0	-	-	-	-	-	-	-	-	-	-	-	-	7.6	5.4	7.5	-	-	7.4
36.0	-	-	-	-	-	-	-	-	-	-	-	-	-	-	6.7	-	-	6.5
38.0	-	-	-	-	-	-	-	-	-	-	-	-	-	-	5.9	-	-	5.7
40.0	-	-	-	-	-	-	-	-	-	-	-	-	-	-	5.2	-	-	5.0
42.0	-	-	-	-	-	-	-	-	-	-	-	-	-	-	-	-	-	4.4
44.0	-	-	-	-	-	-	-	-	-	-	-	-	-	-	-	-	-	3.8

\*Over rear / En arrière / Nach hinten / Over achterzijde

\*\*Special extension sequence / Sequence de sortie spéciale / Sonderausfahrfolge / Speciale uitschuifvolgorde

m	12.8m		17.0m		21.1m		25.4m		29.5m		35.1m		40.7m		46.2m		50.0m	
	t	t	t	t	t	t	t	t	t	t	t	t	t	t	t	t	t	t
3.0	110	105	80.0	80.0	-	-	-	-	-	-	-	-	-	-	-	-	-	-
3.5	101	95.0	80.0	80.0	80.0	80.0	-	-	-	-	-	-	-	-	-	-	-	-
4.0	92.0	86.0	80.0	80.0	80.0	80.0	70.0	70.0	55.0	55.0	-	-	-	-	-	-	-	-
4.5	84.5	65.5	80.0	63.0	80.0	61.5	68.0	63.0	55.0	55.0	-	-	-	-	-	-	-	-
5.0	77.5	51.5	76.5	49.3	75.0	48.0	64.0	49.2	55.0	48.9	35.0	35.0	-	-	-	-	-	-
6.0	55.0	35.0	53.1	33.4	52.0	32.3	53.0	33.3	52.7	33.1	35.0	35.0	33.5	32.5	-	-	-	-
7.0	41.5	26.0	39.9	24.5	38.9	23.6	39.8	24.4	39.5	24.2	35.0	27.3	32.5	27.5	25.0	23.0	-	-
8.0	33.0	20.0	31.4	18.9	30.5	18.0	31.3	18.7	31.1	18.5	34.0	21.4	31.3	21.6	25.0	21.6	19.0	18.0
9.0	27.0	16.0	25.6	14.9	24.7	14.1	25.4	14.8	25.2	14.6	27.9	17.2	28.0	17.4	25.0	17.4	19.0	17.2
10.0	-	-	21.3	12.0	20.5	11.2	21.1	11.9	20.9	11.7	23.4	14.2	23.6	14.3	23.6	14.5	19.0	14.2
12.0	-	-	15.4	8.1	14.6	7.3	15.2	7.9	15.0	7.7	17.3	10.0	17.5	10.1	17.5	10.2	17.4	10.0
14.0	-	-	-	-	10.8	4.8	11.4	5.3	11.2	5.1	13.3	7.3	13.5	7.4	13.5	7.4	13.4	7.3
16.0	-	-	-	-	8.2	2.8	8.6	3.4	8.5	3.1	10.5	5.4	10.6	5.5	10.7	5.5	10.6	5.3
18.0	-	-	-	-	-	-	6.6	1.8	6.5	1.5	8.4	4.0	8.6	4.1	8.6	4.1	8.5	3.8
20.0	-	-	-	-	-	-	5.1	-	4.9	-	6.8	2.8	7.0	2.9	7.0	2.9	6.9	2.6
22.0	-	-	-	-	-	-	-	-	3.6	-	5.6	1.7	5.7	1.8	5.7	1.8	5.6	1.6
24.0	-	-	-	-	-	-	-	-	2.4	-	4.5	-	4.6	-	4.6	-	4.5	-
26.0	-	-	-	-	-	-	-	-	-	-	3.7	-	3.8	-	3.7	-	3.7	-
28.0	-	-	-	-	-	-	-	-	-	-	2.9	-	3.0	-	3.0	-	2.9	-
30.0	-	-	-	-	-	-	-	-	-	-	2.2	-	2.2	-	2.2	-	2.1	-
32.0	-	-	-	-	-	-	-	-	-	-	-	-	1.6	-	1.6	-	1.5	-

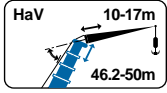


# TEREX AC 435 V

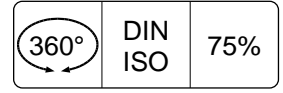
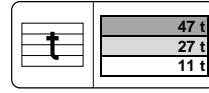
# 150 TON

Lifting capacities at folding jib  
Capacités à la fléchette pliante

Tragfähigkeiten an der Klappspitze  
Capaciteiten aan de klapjib



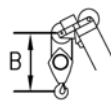
HaV



m	46.2 m						50.0 m					
	10 m			17 m			10 m			17 m		
	0°	20°	40°	0°	20°	40°	0°	20°	40°	0°	20°	40°
8	14.4	-	-	-	-	-	10.5	-	-	-	-	-
9	14.4	-	-	-	-	-	10.5	-	-	-	-	-
10	14.4	-	-	9.5	-	-	10.5	-	-	8.0	-	-
12	14.4	11.6	-	9.5	-	-	10.5	9.5	-	8.0	-	-
14	14.2	11.6	8.8	9.5	-	-	10.5	9.5	-	8.0	-	-
16	13.8	11.3	8.8	9.5	6.0	-	10.5	9.5	8.5	8.0	6.0	-
18	12.8	11.0	8.8	9.5	6.0	-	10.5	9.5	8.5	8.0	6.0	-
20	11.8	10.5	8.8	9.3	6.0	5.0	10.5	9.5	8.5	8.0	6.0	4.8
22	10.7	10.0	8.7	8.8	6.0	5.0	10.3	9.3	8.5	8.0	6.0	4.8
24	9.9	9.5	8.6	8.3	6.0	5.0	9.5	8.8	8.3	8.0	6.0	4.8
26	9.2	9.0	8.5	7.9	6.0	5.0	8.8	8.3	8.1	7.6	6.0	4.8
28	8.5	8.5	8.2	7.4	6.0	5.0	8.1	7.7	7.8	7.2	5.7	4.8
30	7.9	8.0	7.9	7.0	5.9	5.0	7.6	7.2	7.4	6.8	5.4	4.8
32	7.3	7.5	7.6	6.6	5.8	4.9	7.0	6.7	6.9	6.4	5.2	4.7
34	6.8	7.0	6.5	6.3	5.6	4.8	6.5	6.1	6.4	6.1	5.0	4.6
36	6.4	6.5	6.0	5.9	5.4	4.7	6.0	5.6	5.9	5.7	4.8	4.5
38	6.0	6.0	5.6	5.6	5.3	4.6	5.5	5.1	5.4	5.4	4.6	4.4
40	5.3	5.6	-	5.3	5.1	4.5	5.0	4.6	5.0	5.1	4.4	4.3
42	4.6	4.9	-	4.9	4.9	4.4	4.4	4.2	4.6	4.8	4.2	4.2
44	4.0	4.3	-	4.5	4.7	4.3	3.8	3.9	-	4.5	4.0	4.0
46	3.5	3.7	-	4.2	4.4	4.1	3.2	3.5	-	4.0	3.8	3.8
48	3.0	3.1	-	3.7	4.2	-	2.7	3.0	-	3.5	3.6	3.6
50	2.5	-	-	3.3	3.7	-	2.3	2.5	-	3.0	3.4	-
52	-	-	-	2.9	3.2	-	1.9	2.0	-	2.6	3.0	-
54	-	-	-	2.5	2.7	-	1.5	-	-	2.2	2.6	-
56	-	-	-	2.2	2.3	-	-	-	-	2.0	2.2	-
58	-	-	-	1.8	-	-	-	-	-	1.6	1.8	-
60	-	-	-	-	-	-	-	-	-	1.3	-	-

m	46.2 m						50.0 m					
	10 m			17 m			10 m			17 m		
	0°	20°	40°	0°	20°	40°	0°	20°	40°	0°	20°	40°
8	14.4	-	-	-	-	-	10.5	-	-	-	-	-
9	14.4	-	-	-	-	-	10.5	-	-	-	-	-
10	14.4	-	-	9.5	-	-	10.5	-	-	8.0	-	-
12	14.4	11.6	-	9.5	-	-	10.5	9.5	-	8.0	-	-
14	14.2	11.6	8.8	9.5	-	-	10.5	9.5	-	8.0	-	-
16	13.8	11.3	8.8	9.5	6.0	-	10.5	9.5	8.5	8.0	6.0	-
18	12.8	11.0	8.8	9.5	6.0	-	10.5	9.5	8.5	8.0	6.0	-
20	11.8	10.5	8.8	9.3	6.0	5.0	10.5	9.5	8.5	8.0	6.0	4.8
22	10.7	9.5	8.7	8.8	6.0	5.0	10.3	9.3	8.5	8.0	6.0	4.8
24	9.5	8.8	8.6	8.3	6.0	5.0	9.2	8.8	8.3	8.0	6.0	4.8
26	7.9	7.3	8.5	7.9	6.0	5.0	7.7	8.3	8.1	7.6	6.0	4.8
28	6.6	6.2	7.9	7.4	6.0	5.0	6.4	7.2	7.7	7.2	5.7	4.8
30	5.5	5.2	6.6	6.4	5.9	5.0	5.3	6.0	6.5	6.1	5.4	4.8
32	4.6	4.3	5.5	5.4	5.8	4.9	4.3	4.9	5.4	5.1	5.2	4.7
34	3.7	3.5	4.6	4.6	5.4	4.8	3.5	4.1	4.4	4.3	5.0	4.6
36	3.0	2.8	3.8	3.9	4.7	4.7	2.8	3.3	3.6	3.6	4.5	4.5
38	2.4	2.2	3.0	3.2	4.0	4.5	2.2	2.6	2.9	3.0	3.7	4.3
40	1.8	1.6	2.4	2.7	3.3	3.8	1.6	2.0	2.2	2.4	3.1	3.6
42	1.3	1.1	-	2.1	2.7	3.1	1.1	1.5	1.6	1.9	2.5	3.0
44	0.9	-	-	1.7	2.2	2.6	-	0.9	-	1.4	2.0	2.4
46	-	-	-	1.3	1.8	2.0	-	-	-	1.0	1.5	1.9
48	-	-	-	0.9	1.3	-	-	-	-	-	1.1	1.4
50	-	-	-	-	0.9	-	-	-	-	-	-	-

Hook Block / Crane hook  
Crochet mouflé / Crochet simple



Unterflasche / Hakengehänge  
Kraanblok / Kraanhaak

Capacity Capacité Tragfähigkeit Capaciteit	Number of sheaves Nombre de poulies Anzahl der Rollen Aantal schijven	Number of lines Nombre de brins Strangzahl Aantal parten	Weight Poids Gewicht Gewicht	"B"
SWL 51.0 t	3	7	1100 kg	2.4 m
SWL 22.0 t	1	3	750 kg	2.4 m