

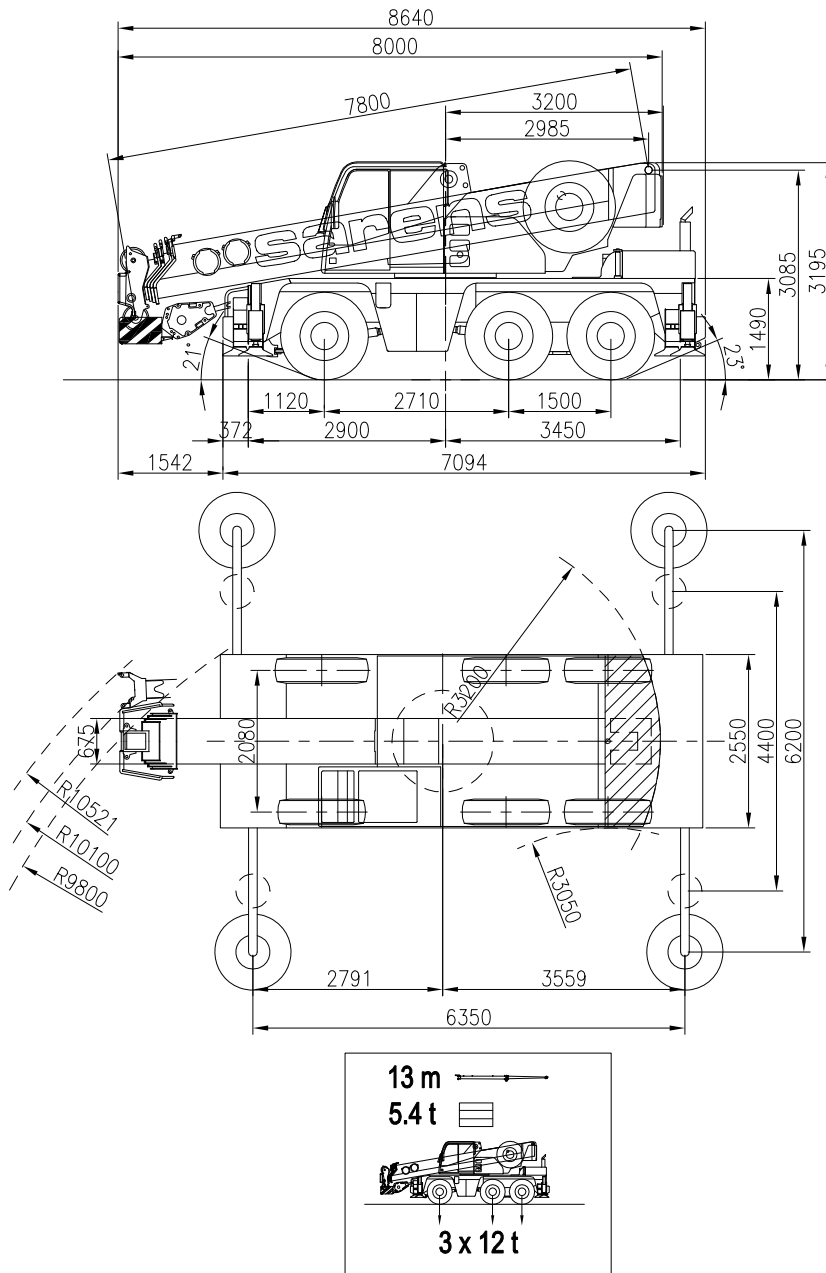


sarens
group

www.sarens.com

TEREX AC 40-1

40 TON



nothing too heavy, nothing too high



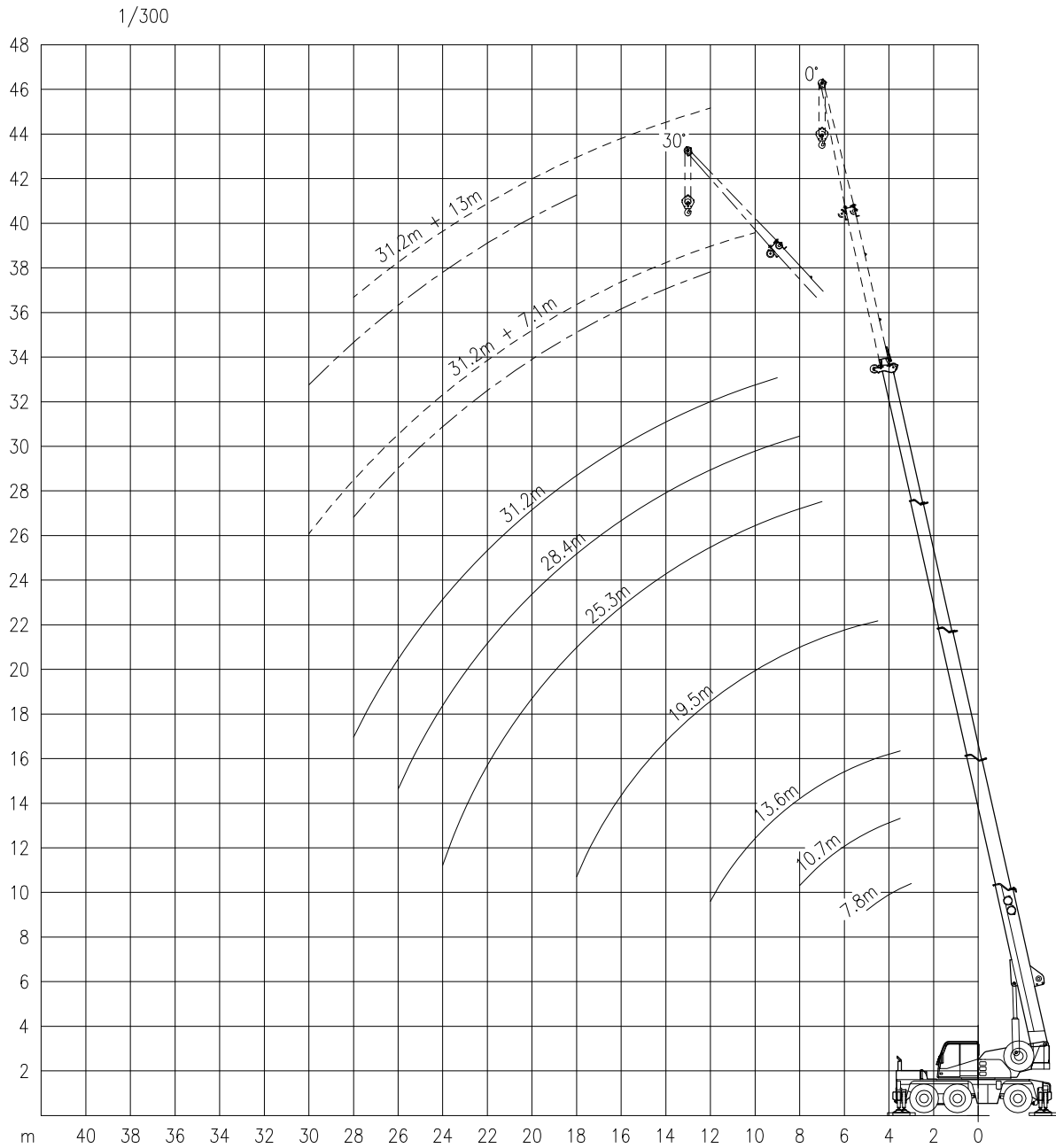
TEREX AC 40-1

Working ranges
Portées

40 TON

Arbeitsbereiche
Werkbereich

Ha + HaV



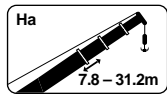


TEREX AC 40-1

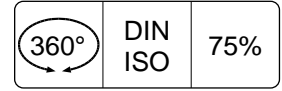
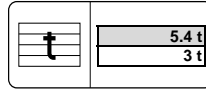
40 TON

Lifting capacities
Capacités

Tragfähigkeiten
Capaciteiten



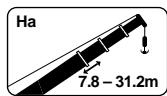
Ha



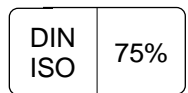
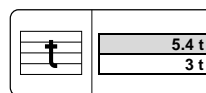
m	7.8 m	10.7 m	13.6 m	19.5 m	25.3 m	28.4 m	31.2 m
	t	t	t	t	t	t	t
3.0	40 !*	-	-	-	-	-	-
3.0	34.3	25.0	21.0	-	-	-	-
3.5	32.4	25.0	21.0	-	-	-	-
4.0	30.5	25.0	21.0	16.0	-	-	-
4.5	28.3	25.0	20.7	16.0	-	-	-
5.0	-	24.0	19.7	16.0	-	-	-
6.0	-	20.3	17.9	16.0	14.0	-	-
7.0	-	17.0	16.0	15.3	13.2	11.1	-
8.0	-	-	15.4	14.0	12.2	10.8	9.0
9.0	-	-	12.6	12.3	11.2	10.1	8.8
10.0	-	-	10.5	10.3	10.3	9.4	8.3
12.0	-	-	-	8.1	7.6	7.6	7.3
14.0	-	-	-	6.3	5.9	6.0	5.9
16.0	-	-	-	5.1	5.0	4.9	4.7
18.0	-	-	-	-	4.3	4.0	3.8
20.0	-	-	-	-	3.5	3.4	3.1
22.0	-	-	-	-	3.0	2.8	2.6
24.0	-	-	-	-	-	2.3	2.1
26.0	-	-	-	-	-	-	1.7
28.0	-	-	-	-	-	-	1.4

m	7.8 m	10.7 m	13.6 m	19.5 m	25.3 m	28.4 m	31.2 m
	t	t	t	t	t	t	t
-	-	-	-	-	-	-	-
34.3	25.0	21.0	-	-	-	-	-
31.2	25.0	21.0	-	-	-	-	-
28.3	25.0	21.0	16.0	-	-	-	-
23.8	23.0	20.7	16.0	-	-	-	-
-	18.4	18.0	16.0	-	-	-	-
-	13.0	14.4	14.2	13.6	-	-	-
-	9.8	11.1	11.4	10.9	10.8	-	-
-	-	8.9	9.2	8.7	8.8	8.8	8.8
-	-	7.3	7.6	7.7	7.4	7.2	7.2
-	-	6.2	6.4	6.5	6.3	6.1	6.1
-	-	-	4.8	4.9	4.7	4.5	4.5
-	-	-	3.7	3.8	3.6	3.4	3.4
-	-	-	3.0	3.0	2.8	2.7	2.7
-	-	-	-	2.5	2.3	2.1	2.1
-	-	-	-	2.1	1.8	1.7	1.7
-	-	-	-	1.7	1.5	1.3	1.3
-	-	-	-	-	1.2	1.0	1.0
-	-	-	-	-	-	0.8	0.8
-	-	-	-	-	-	-	0.6

!* Over rear / En arrière / Nach hinten / Over achterzijde.



Ha



m	7.8 m	10.7 m	13.6 m	19.5 m	25.3 m	28.4 m	31.2 m
	t	t	t	t	t	t	t
3.0	15.9	15.1	16.0	-	-	-	-
3.5	12.1	11.4	13.0	-	-	-	-
4.0	11.8	11.2	12.6	12.9	-	-	-
4.5	9.8	9.2	10.5	10.8	-	-	-
5.0	-	7.7	8.9	9.2	-	-	-
6.0	-	5.7	6.7	7.0	-	-	-
7.0	-	4.3	5.3	5.5	-	-	-
8.0	-	-	4.3	4.5	-	-	-
9.0	-	-	3.6	3.8	-	-	-
10.0	-	-	3.0	3.2	-	-	-
12.0	-	-	-	2.3	-	-	-
14.0	-	-	-	1.7	-	-	-
16.0	-	-	-	1.3	-	-	-

m	7.8 m	10.7 m	13.6 m	19.5 m	25.3 m	28.4 m	31.2 m
	t	t	t	t	t	t	t
14.5	14.0	15.1	-	-	-	-	-
12.9	12.4	13.4	-	-	-	-	-
11.5	11.1	12.1	-	-	-	-	-
10.4	10.0	11.0	-	-	-	-	-
-	9.0	10.0	-	-	-	-	-
-	7.5	8.4	-	-	-	-	-
-	6.1	7.2	-	-	-	-	-
-	-	5.9	-	-	-	-	-
-	-	4.8	-	-	-	-	-
-	-	4.1	-	-	-	-	-
-	-	-	-	-	-	-	-
-	-	-	-	-	-	-	-
-	-	-	-	-	-	-	-
-	-	-	-	-	-	-	-

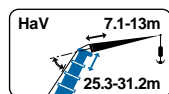


TEREX AC 40-1

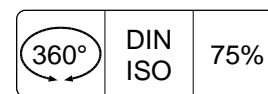
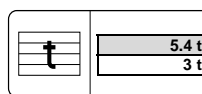
40 TON

Lifting capacities
Capacités

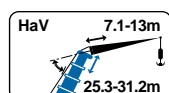
Tragfähigkeiten
Capaciteiten



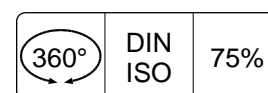
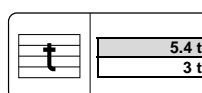
HaV



m	25.3 m				31.2 m			
	7.1 m		13.0 m		7.1 m		13.0 m	
	0°	30°	0°	30°	0°	30°	0°	30°
8.0	6.5	-	-	-	-	-	-	-
9.0	6.2	-	-	-	-	-	-	-
10.0	5.9	4.2	3.6	-	5.0	-	-	-
12.0	5.4	4.0	3.3	-	4.8	3.9	3.0	-
14.0	4.9	3.8	3.0	-	4.6	3.7	2.9	-
16.0	4.5	3.7	2.8	2.2	4.4	3.5	2.8	-
18.0	4.0	3.5	2.6	2.1	4.0	3.3	2.7	2.1
20.0	3.3	3.4	2.4	2.0	3.3	3.1	2.5	2.0
22.0	2.8	2.9	2.3	1.9	2.7	2.9	2.4	1.9
24.0	2.3	2.4	2.1	1.9	2.2	2.4	2.2	1.9
26.0	1.9	-	2.0	1.8	1.8	2.0	1.9	1.8
28.0	1.6	-	1.7	1.8	1.5	1.6	1.6	1.8
30.0	-	-	1.5	1.6	1.2	1.3	1.3	1.6
32.0	-	-	1.2	-	0.9	-	1.1	1.3
34.0	-	-	1.0	-	0.7	-	0.9	1.0
36.0	-	-	-	-	-	-	0.7	-

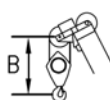


HaV



m	25.3 m				31.2 m			
	7.1 m		13.0 m		7.1 m		13.0 m	
	0°	30°	0°	30°	0°	30°	0°	30°
8.0	6.5	-	-	-	-	-	-	-
9.0	6.2	-	-	-	-	-	-	-
10.0	5.9	4.2	3.6	-	5.0	-	-	-
12.0	4.7	4.0	3.3	-	4.6	3.9	3.0	-
14.0	3.6	3.8	3.0	-	3.5	3.7	2.9	-
16.0	2.8	3.1	2.8	2.2	2.8	3.1	2.8	-
18.0	2.3	2.5	2.4	2.1	2.2	2.5	2.3	2.1
20.0	1.8	2.0	1.9	2.0	1.7	2.0	1.8	2.0
22.0	1.5	1.6	1.6	1.9	1.4	1.6	1.5	1.8
24.0	1.2	1.3	1.3	1.6	1.1	1.3	1.2	1.5
26.0	0.9	-	1.0	1.3	0.8	1.0	0.9	1.2
28.0	0.7	-	0.8	1.0	0.6	0.7	0.7	1.0
30.0	-	-	0.6	0.8	-	-	-	0.7

Hook Block / Crane hook Crochet mouflé / Crochet simple



Unterflasche / Hakengehänge Kraanblok / Kraanhaak

Capacity Capacité Tragfähigkeit Capaciteit	Number of sheaves Nombre de poulies Anzahl der Rollen Aantal schijven	Number of lines Nombre de brins Strangzahl Aantal parten	Weight Poids Gewicht Gewicht	"B"
SWL 50 t !**	6	10	480 kg	2.0 m
SWL 30.1 t	3	7	325 kg	1.3 m
SWL 12.9 t	1	3	250 kg	1.1 m
SWL 4.3 t	-	1	130 kg	0.8 m

!** On request / Sur demande / Auf anfrage / Op aanvraag.