

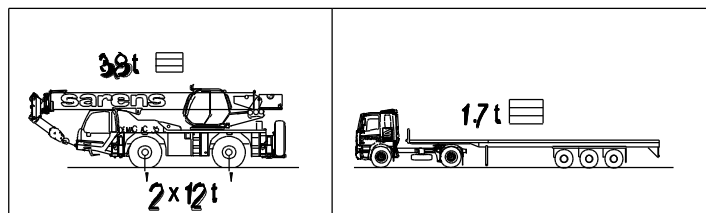
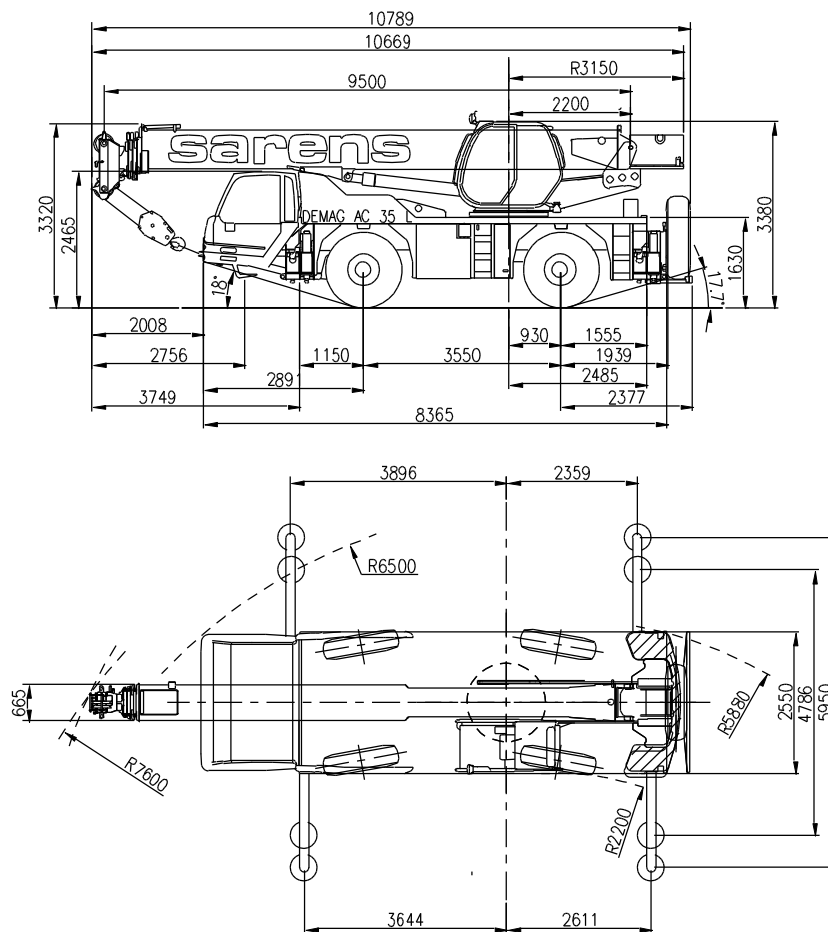


sarens
group

www.sarens.com

TEREX AC 35 L

35 TON



nothing too heavy, nothing too high





TEREX AC 35 L

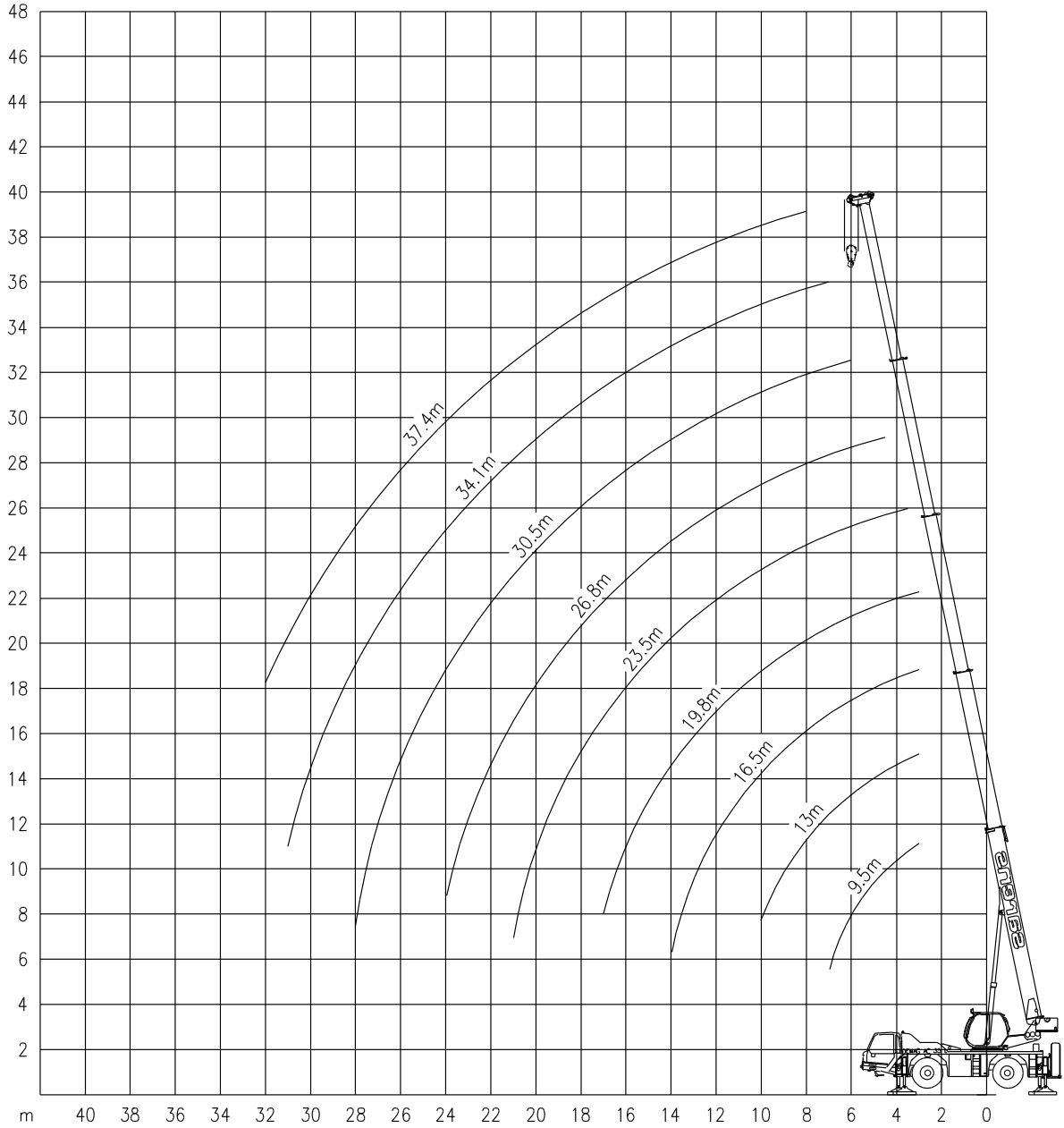
Working ranges
Portées

35 TON

Arbeitsbereiche
Werkbereich

Ha

1/300



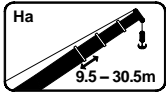


TEREX AC 35 L

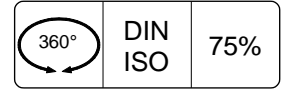
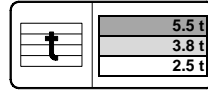
Lifting capacities
Capacités

35 TON

Tragfähigkeiten
Capacités

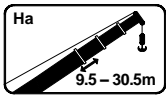


Ha

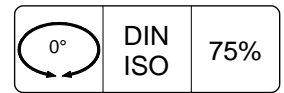
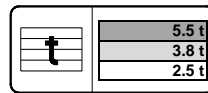


Mode	9.5 m		13.0 m		16.5 m		19.8 m		23.5 m		26.8 m		30.5 m	
	1	2	1	2	1	2	1	2	1	2	1	2	1	2
3	-	13.90	-	13.05	-	12.20	-	11.40	-	-	-	-	-	-
3.5	-	11.40	-	10.90	-	10.30	-	9.75	-	9.20	-	-	-	-
4	-	9.60	-	9.25	-	8.85	-	8.45	-	8.00	-	-	-	-
4.5	-	8.20	-	8.00	-	7.70	-	7.40	-	7.10	-	6.80	-	-
5	-	7.10	-	7.00	-	6.80	-	6.55	-	6.30	-	6.05	-	-
6	-	5.40	-	5.45	-	5.40	-	5.25	-	5.10	-	4.90	-	4.75
7	-	4.10	-	4.35	-	4.35	-	4.30	-	4.20	-	4.05	-	3.95
8	-	-	-	4.35	-	3.55	-	3.55	-	3.50	-	3.40	-	3.30
9	-	-	-	2.85	-	2.95	-	2.95	-	2.90	-	2.85	-	2.80
10	-	-	-	2.25	-	2.45	-	2.50	-	2.45	-	2.45	-	2.40
11	-	-	-	-	-	2.05	-	2.10	-	2.10	-	2.05	-	2.05
12	-	-	-	-	-	1.65	-	1.75	-	1.75	-	1.75	-	1.75
13	-	-	-	-	-	1.35	-	1.50	-	1.50	-	1.50	-	1.50
14	-	-	-	-	-	1.10	-	1.25	-	1.25	-	1.25	-	1.25
15	-	-	-	-	-	-	-	1.00	-	1.05	-	1.05	-	1.05
16	-	-	-	-	-	-	-	0.80	-	0.90	-	0.90	-	0.90
17	-	-	-	-	-	-	-	-	-	0.75	-	0.75	-	0.75
18	-	-	-	-	-	-	-	-	-	0.60	-	0.60	-	0.60

! ** Duty charts on fully retracted outriggers / Charges au empatement entièrement rétracté / Tragfähigkeiten mit komplett zurückgezogenen Abstützungen / Lasttabellen met volledig ingeschoven afstempeling.



Ha

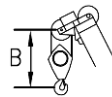


Mode	9.5 m !*		13.0 m !*		16.5 m !*	
	1	2	1	2	1	2
3	-	10.15	-	11.00	-	11.45
3.5	-	9.05	-	9.75	-	10.20
4	-	8.10	-	8.75	-	9.15
4.5	-	7.30	-	7.90	-	8.25
5	-	6.60	-	7.20	-	7.50
6	-	5.50	-	6.00	-	6.30
7	-	4.60	-	5.10	-	5.35
8	-	-	-	4.30	-	4.60
9	-	-	-	3.50	-	3.75
10	-	-	-	2.90	-	3.15
11	-	-	-	-	-	2.60
12	-	-	-	-	-	2.15
13	-	-	-	-	-	1.85
14	-	-	-	-	-	1.50

! * Over rear / En arrière / Nach hinten / Over achterzijde

Hook block/Crane hook

Crochet-mouflé/Crochet simple



Unterflasche/Hakengehänge

Kraanblok/Kraanhaak

Capacity / Capacité Tragfähigkeit / Capaciteit	Number of sheaves / Nombre de poulies Anzahl der Rollen / Aantal schijven	Number of lines / Nombre de brins Strangzahl / Aantal parten	Weight / Poids Gewicht / Gewicht	"B"
SWL 25 t	3	7	330 kg	1.3 m