



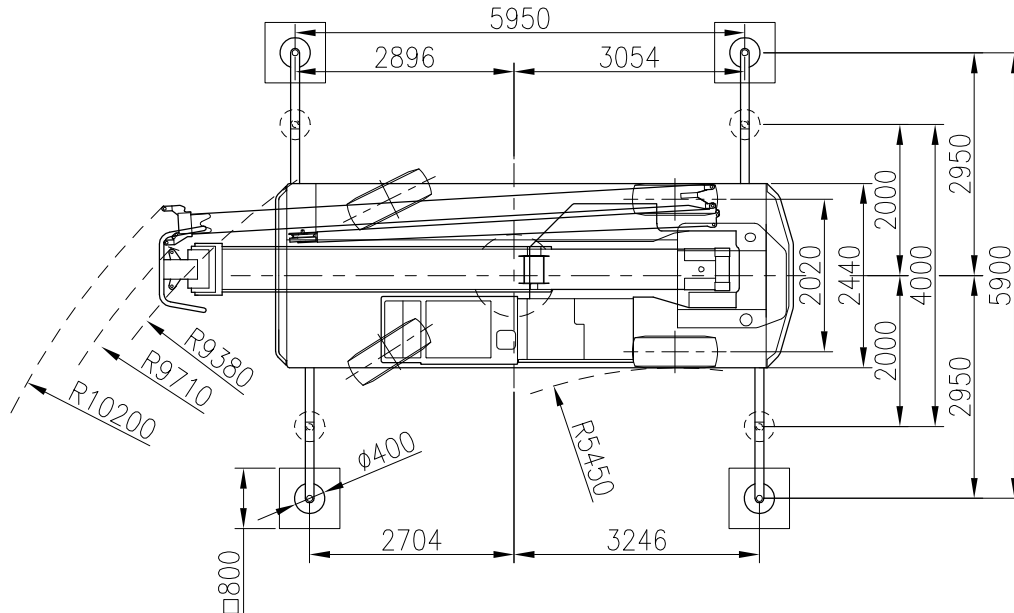
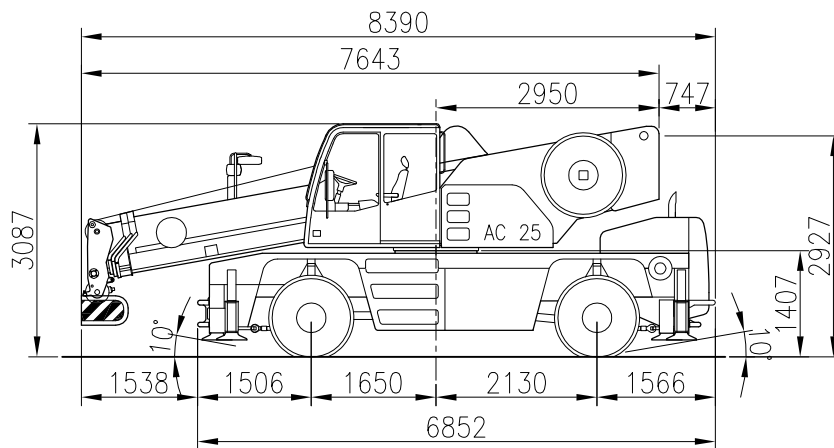
**sarens**  
group

[www.sarens.com](http://www.sarens.com)

# TEREX AC 25

## 25 TON

1/100



nothing too heavy, nothing too high





# TEREX AC 25

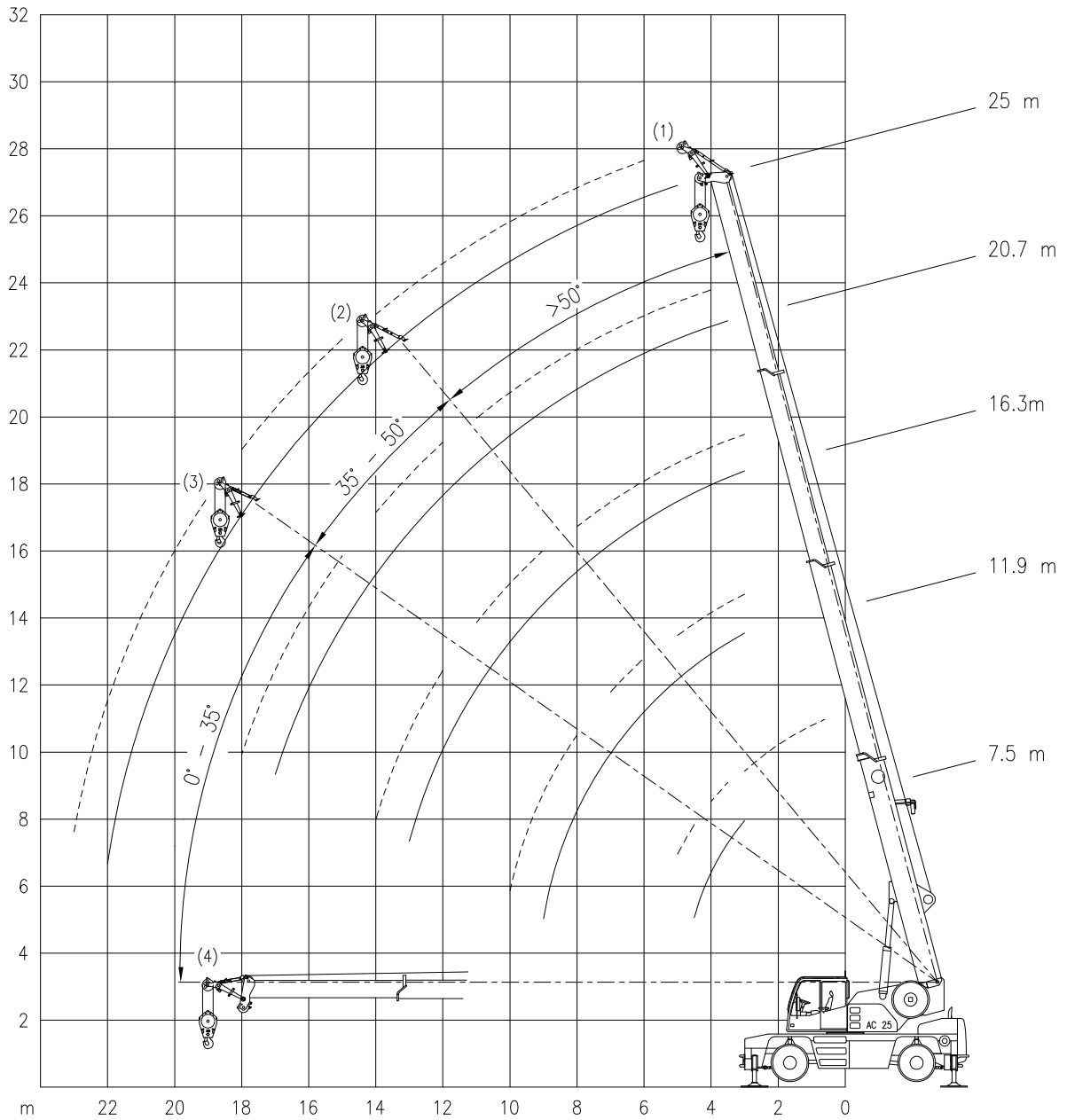
Working ranges  
Portées

## 25 TON

Arbeitsbereiche  
Werkbereich

Ha / Ha + Spitze

1/200



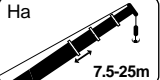


# TEREX AC 25


Lifting capacities at main boom  
Capacités à la flèche principale

# 25 TON

Tragfähigkeiten am Hauptausleger  
Capaciteiten aan de hoofdgiel




Ha



Ha

5.9m

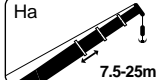


360°

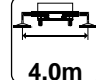
DIN ISO

75%

m	7.5 m	11.9 m	16.3 m	20.7 m	25.0 m
	t	t	t	t	t
3.0	25*	-	-	-	-
3.0	21.5	15.0	15.0	-	-
3.5	19.7	15.0	15.0	12.0	-
4.0	17.9	15.0	14.8	12.0	-
4.5	16.2	15.0	14.0	12.0	-
5.0	-	14.7	13.3	12.0	9.0
6.0	-	12.0	12.1	11.2	8.3
7.0	-	9.8	9.8	9.2	7.6
8.0	-	7.7	7.8	7.6	7.0
9.0	-	6.2	6.3	6.4	6.1
10.0	-	-	5.3	5.4	5.3
11.0	-	-	4.4	4.5	4.5
12.0	-	-	3.8	3.9	3.9
13.0	-	-	3.3	3.4	3.4
14.0	-	-	-	2.9	3.0
15.0	-	-	-	2.6	2.6
16.0	-	-	-	2.3	2.3
17.0	-	-	-	2.0	2.0
18.0	-	-	-	-	1.8
19.0	-	-	-	-	1.6
20.0	-	-	-	-	1.4
21.0	-	-	-	-	1.2
22.0	-	-	-	-	1.0




Ha



Ha

4.0m



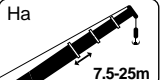
360°

DIN ISO


75%

m	7.5 m	11.9 m	16.3 m	20.7 m	25.0 m
	t	t	t	t	t
3.0	19.1	15.0	15.0	-	-
3.5	17.1	15.0	14.3	12.0	-
4.0	13.8	13.6	12.0	10.8	-
4.5	10.8	11.1	10.3	9.4	-
5.0	-	9.1	9.0	8.3	7.6
6.0	-	6.5	6.6	6.6	6.1
7.0	-	4.9	5.0	5.2	5.0
8.0	-	3.9	4.0	4.1	4.1
9.0	-	3.1	3.3	3.3	3.4
10.0	-	-	2.7	2.8	2.8
11.0	-	-	2.3	2.3	2.4
12.0	-	-	1.9	2.0	2.0
13.0	-	-	1.6	1.7	1.7
14.0	-	-	-	1.5	1.5
15.0	-	-	-	1.2	1.3
16.0	-	-	-	1.0	1.1
17.0	-	-	-	0.8	1.0
18.0	-	-	-	-	0.8
19.0	-	-	-	-	0.7
20.0	-	-	-	-	0.6
21.0	-	-	-	-	0.5

\*Over rear or front / En arrière ou devant / Nach hinten oder vorne / Over achterzijde of voorzijde.




Ha



Ha

2.25m



360°

DIN ISO

75%

m	7.5 m	11.9 m	16.3 m
	t	t	t
3.0	9.3	9.7	8.7
3.5	7.1	7.4	7.3
4.0	5.6	5.9	6.0
4.5	4.6	4.9	5.0
5.0	-	4.1	4.2
6.0	-	3.0	3.1
7.0	-	2.3	2.4
8.0	-	1.8	1.9
9.0	-	1.3	1.5
10.0	-	-	1.2
11.0	-	-	1.0



Ha



Ha

0°

DIN ISO

75%

m	7.5 m (max. 2 km/h)	11.9 m (max. 2 km/h)	16.3 m (max. 2 km/h)
	t	t	t
3.0	9.8*	10.0*	10.1*
3.5	8.8*	9.0*	9.1*
4.0	7.9*	8.1*	8.2*
4.5	7.2*	7.4*	7.5*
5.0	-	6.7*	6.8*
6.0	-	5.6*	5.7*
7.0	-	4.3*	4.4*
8.0	-	3.4*	3.5*
9.0	-	2.8*	2.9*
10.0	-	-	2.4*
11.0	-	-	2.0*
12.0	-	-	1.7*
13.0	-	-	1.4*



Ha



Ha

360°

DIN ISO

75%

m	7.5 m (0 km/h)	11.9 m (0 km/h)	16.3 m (0 km/h)
	t	t	t
3.0	-	-	-
3.5	5.6	5.9	6.0
4.0	4.9	5.1	5.2
4.5	4.2	4.5	4.6
5.0	-	3.9	4.0
6.0	-	2.8	2.9
7.0	-	2.1	2.2
8.0	-	1.7	1.7
9.0	-	1.3	1.4
10.0	-	-	1.1
11.0	-	-	0.9

\*Over rear or front / En arrière ou devant / Nach hinten oder vorne / Over achterzijde of voorzijde.

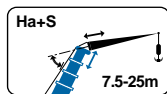


**TEREX AC 25**

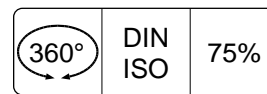
**25 TON**

Lifting capacities at fixed jib  
Capacités à la flèche treillis fixe

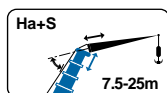
Tragfähigkeiten am starren Hilfsausleger  
Capaciteiten aan de vaste hulpgiel



**HA + Spitze**



	7.5 m	11.9 m	16.3 m	20.7 m	25.0 m
m	t	t	t	t	t
3.0	15.0 (1)	15.0 (1)	12.5 (1)	-	-
3.5	15.0 (2)	15.0 (1)	12.5 (1)	-	-
4.0	15.0 (2)	15.0 (1)	12.5 (1)	10.0 (1)	-
4.5	15.0 (3)	14.9 (1)	12.4 (1)	10.0 (1)	-
5.0	14.5 (3)	14.2 (1)	12.2 (1)	10.0 (1)	8.0 (1)
6.0	-	12.0 (2)	11.5 (1)	10.0 (1)	8.0 (1)
7.0	-	9.9 (2)	10.0 (1)	9.3 (1)	7.3 (1)
8.0	-	7.6 (3)	7.9 (1)	7.8 (1)	6.6 (1)
9.0	-	6.2 (3)	6.3 (2)	6.4 (1)	6.0 (1)
10.0	-	5.2 (3)	5.2 (2)	5.3 (1)	5.3 (1)
12.0	-	-	3.7 (3)	3.8 (2)	3.8 (1)
14.0	-	-	2.8 (3)	2.8 (2)	2.8 (1)
16.0	-	-	-	2.1 (3)	2.1 (2)
18.0	-	-	-	1.6 (3)	1.6 (2)
20.0	-	-	-	-	1.2 (3)
22.0	-	-	-	-	0.9 (3)
23.0	-	-	-	-	0.8 (3)
HOR	13.0 (4)	4.8 (4)	2.3 (4)	1.0 (4)	-



**HA + Spitze**



	7.5 m	11.9 m	16.3 m	20.7 m	25.0 m
m	t	t	t	t	t
3.0	15.0 (1)	15.0 (1)	12.5 (1)	-	-
3.5	15.0 (2)	15.0 (1)	12.5 (1)	-	-
4.0	14.2 (2)	14.1 (1)	12.5 (1)	10.0 (1)	-
4.5	11.0 (3)	11.5 (1)	10.7 (1)	9.8 (1)	-
5.0	8.9 (3)	9.3 (1)	9.3 (1)	8.6 (1)	7.9 (1)
6.0	-	6.5 (2)	6.7 (1)	6.8 (1)	6.3 (1)
7.0	-	5.0 (2)	5.1 (1)	5.2 (1)	5.1 (1)
8.0	-	3.9 (3)	4.0 (1)	4.1 (1)	4.1 (1)
9.0	-	3.1 (3)	3.2 (2)	3.3 (1)	3.3 (1)
10.0	-	2.6 (3)	2.6 (2)	2.7 (1)	2.7 (1)
12.0	-	-	1.8 (3)	1.9 (2)	1.9 (1)
14.0	-	-	1.3 (3)	1.3 (2)	1.4 (1)
16.0	-	-	-	1.0 (3)	1.0 (2)
18.0	-	-	-	0.7 (3)	0.7 (2)
19.0	-	-	-	-	0.5 (3)
HOR	5.5 (4)	2.2 (4)	1.0 (4)	-	-

- (1) Max. offset for runner / inclinaison max. pour potence / Lange Absteckung Montagespitze / Max. offset voor giekneus
- (2) Medium offset for runner / inclinaison moyenne pour potence / Mittlere Absteckung Montagespitze / Middenste offset voor giekneus
- (3) Min. offset for runner / inclinaison min. pour potence / Kurze Absteckung Montagespitze / Min. offset voor giekneus
- (4) With horizontal boom / Avec flèche horizontale / Mit Horizontalen Ausleger / Met horizontale giel

**Hook block/Crane hook**  
**Unterflasche/Hakengehänge**



**29kN Ø 13mm**

**Crochet-mouflé / Crochet simple**  
**Kraanblok/Kraanhaak**

Capacity Capacité Tragfähigkeit Capaciteit	Number of sheaves Nombre de poulies Anzahl der rollen Aantal schijven	Number of lines Nombre de brins Strangzahl Aantal parten	Weight Poids Gewicht Gewicht	"B"
SWL 25.0 t	5	10	220 kg	1.8 m
SWL 20.3 t	3	7	160 kg	1.6 m
SWL 8.7 t	1	3	100 kg	1.6 m
SWL 2.9 t	-	0	80 kg	1.5 m

V.2011-10-12