

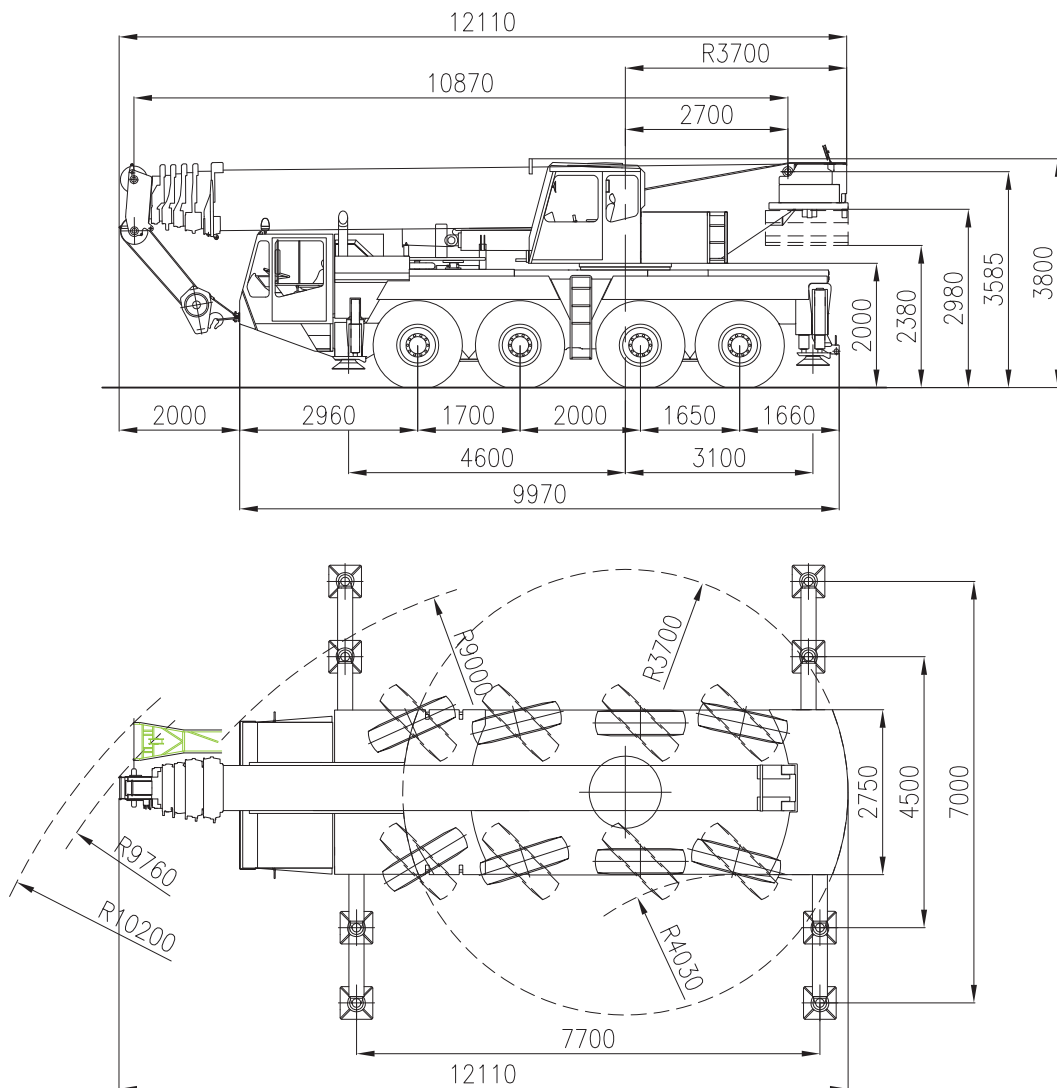


**sarens**  
group

[www.sarens.com](http://www.sarens.com)

**DEMAG AC 205**

**80 TON**



AXLE-LOAD / CHARGE PAR ESSIEU / ACHSLAST / ASLAST  
TOTAL WEIGHT / POIDS TOTAL / TOTAAL GEWICHT / GESAMTGEWICHT

: 12 t (☐ 8 t)  
: 48 t (☐ 8 t)

nothing too heavy, nothing too high





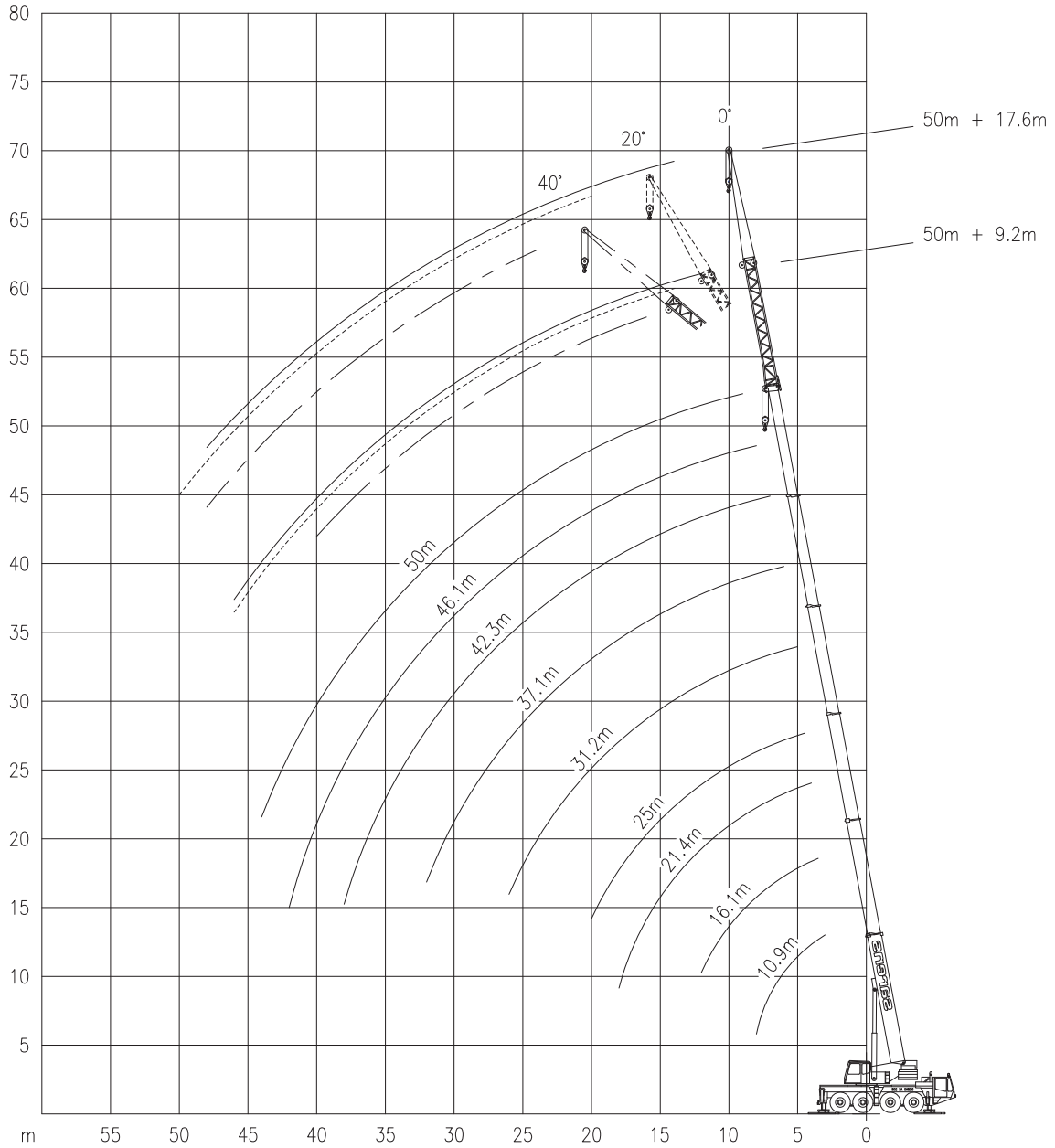
# DEMAG AC 205

Working ranges  
Portées

# 80 TON

Arbeitsbereiche  
Werkbereich

## Ha + HaV



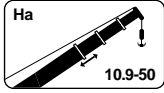


# DEMAG AC 205

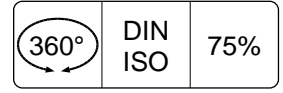
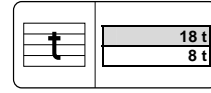
Lifting capacities  
Capacités

## 80 TON

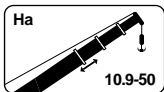
Tragfähigkeiten  
Capacités



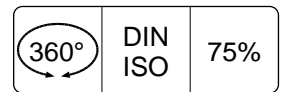
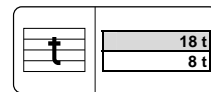
Ha



	10.9 m	16.1 m	21.4 m	25.0 m	31.2 m	37.1 m	42.3 m	46.1 m	50.0 m
m	t	t	t	t	t	t	t	t	t
3.0	80.0 !*	-	-	-	-	-	-	-	-
3.0	70.0	-	-	-	-	-	-	-	-
3.5	64.7	50.0	-	-	-	-	-	-	-
4.0	59.6	50.0	40.0	-	-	-	-	-	-
4.5	55.2	50.0	38.0	30.0	-	-	-	-	-
5.0	51.3	47.6	35.5	30.0	17.0	-	-	-	-
6.0	42.2	41.8	31.7	28.9	17.0	15.0	-	-	-
7.0	35.2	34.9	28.6	26.1	17.0	14.7	11.0	-	-
8.0	28.4	29.8	26.0	23.5	17.0	14.1	11.0	8.0	-
9.0	-	25.8	23.6	21.2	17.0	13.5	11.0	8.0	6.0
10.0	-	22.1	21.2	19.1	16.1	12.9	11.0	8.0	6.0
12.0	-	16.2	15.3	15.3	13.9	11.5	10.8	7.8	6.0
14.0	-	-	11.6	11.6	12.1	10.2	9.8	7.5	5.9
16.0	-	-	9.1	9.0	10.5	9.1	8.6	7.1	5.7
18.0	-	-	7.2	7.1	8.5	8.1	7.6	6.7	5.4
20.0	-	-	-	5.6	7.1	7.4	6.8	6.1	5.0
22.0	-	-	-	-	5.9	6.3	6.2	5.6	4.6
24.0	-	-	-	-	4.9	5.3	5.2	5.1	4.2
26.0	-	-	-	-	4.1	4.5	4.3	4.5	3.8
28.0	-	-	-	-	-	3.8	3.6	3.8	3.5
30.0	-	-	-	-	-	3.2	3.0	3.2	3.2
32.0	-	-	-	-	-	2.6	2.5	2.7	2.7
34.0	-	-	-	-	-	-	2.1	2.3	2.3
36.0	-	-	-	-	-	-	1.7	1.9	1.9
38.0	-	-	-	-	-	-	1.3	1.5	1.5
40.0	-	-	-	-	-	-	-	1.2	1.2
42.0	-	-	-	-	-	-	-	0.9	0.9
44.0	-	-	-	-	-	-	-	-	0.6



Ha



	10.9 m	16.1 m	21.4 m	25.0 m	31.2 m	37.1 m	42.3 m	46.1 m	50.0 m
m	t	t	t	t	t	t	t	t	t
3.0	80.0 !*	-	-	-	-	-	-	-	-
3.0	70.0	-	-	-	-	-	-	-	-
3.5	64.4	50.0	-	-	-	-	-	-	-
4.0	59.3	50.0	40.0	-	-	-	-	-	-
4.5	53.0	50.0	38.0	30.0	-	-	-	-	-
5.0	46.8	46.5	35.5	30.0	17.0	-	-	-	-
6.0	37.7	37.5	31.7	28.9	17.0	15.0	-	-	-
7.0	31.3	30.9	28.6	26.1	17.0	14.7	11.0	-	-
8.0	24.1	23.7	22.6	22.5	17.0	14.1	11.0	8.0	-
9.0	-	19.0	17.9	17.9	17.0	13.5	11.0	8.0	6.0
10.0	-	15.6	14.6	14.6	16.1	12.9	11.0	8.0	6.0
12.0	-	11.0	10.1	10.0	11.8	11.5	10.8	7.8	6.0
14.0	-	-	7.2	7.1	8.8	9.3	9.2	7.5	5.9
16.0	-	-	5.2	5.1	6.8	7.2	7.1	7.1	5.7
18.0	-	-	3.7	3.6	5.2	5.7	5.6	5.8	5.4
20.0	-	-	-	2.5	4.0	4.5	4.4	4.6	4.6
22.0	-	-	-	-	3.1	3.6	3.4	3.7	3.7
24.0	-	-	-	-	2.4	2.8	2.7	2.9	2.9
26.0	-	-	-	-	1.8	2.2	2.1	2.3	2.3
28.0	-	-	-	-	-	1.7	1.5	1.7	1.7
30.0	-	-	-	-	-	1.3	1.1	1.3	1.3
32.0	-	-	-	-	-	0.9	0.7	0.9	0.9

!\* Over rear / En arrière / Nach hinten / Over achterzijde.

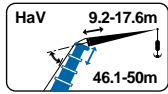


# DEMAG AC 205

Lifting capacities  
Capacités

# 80 TON

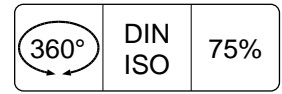
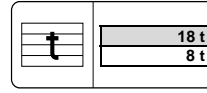
Tragfähigkeiten  
Capaciteiten



HaV

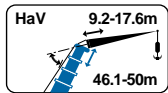


7.0 m



m	46.1 m					
	9.2 m			17.6 m		
	0°	20°	40°	0°	20°	40°
t	t	t	t	t	t	
10.0	3.8	-	-	-	-	-
12.0	3.8	-	-	1.5	-	-
14.0	3.8	3.4	-	1.5	-	-
16.0	3.8	3.4	3.0	1.5	-	-
18.0	3.7	3.2	2.9	1.5	1.4	-
20.0	3.6	3.1	2.8	1.5	1.4	-
22.0	3.4	3.0	2.7	1.4	1.4	-
24.0	3.2	2.8	2.6	1.4	1.4	1.2
26.0	3.0	2.7	2.5	1.3	1.4	1.1
28.0	2.9	2.5	2.4	1.3	1.3	1.1
30.0	2.7	2.3	2.3	1.3	1.3	1.1
32.0	2.5	2.2	2.2	1.2	1.2	1.1
34.0	2.4	2.1	2.0	1.2	1.2	1.1
36.0	2.1	2.0	1.9	1.1	1.2	1.0
38.0	1.7	1.9	1.8	1.1	1.1	1.0
40.0	1.4	1.6	1.7	1.1	1.1	1.0
42.0	1.1	1.3	-	1.0	1.1	1.0
44.0	0.9	1.0	-	1.0	1.0	1.0
46.0	0.7	0.8	-	0.9	1.0	1.0
48.0	-	-	-	0.7	0.9	1.0
50.0	-	-	-	-	0.7	-

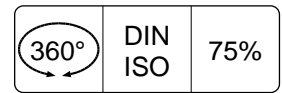
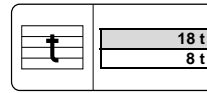
m	50.0 m					
	9.2 m			17.6 m		
	0°	20°	40°	0°	20°	40°
t	t	t	t	t	t	
-	-	-	-	-	-	-
2.8	-	-	-	-	-	-
2.8	2.8	-	-	1.0	-	-
2.8	2.8	2.6	-	1.0	-	-
2.8	2.7	2.5	-	1.0	-	-
2.7	2.5	2.4	-	1.0	1.0	-
2.5	2.4	2.3	-	1.0	1.0	-
2.4	2.3	2.1	-	1.0	1.0	1.0
2.2	2.1	2.0	-	1.0	1.0	1.0
2.1	2.0	1.9	-	1.0	1.0	1.0
2.0	1.9	1.8	-	0.9	1.0	1.0
1.9	1.8	1.7	-	0.9	1.0	1.0
1.8	1.7	1.6	-	0.8	0.9	1.0
1.7	1.6	1.5	-	0.8	0.9	0.9
1.6	1.5	1.5	-	0.8	0.8	0.9
1.4	1.5	1.4	-	0.8	0.8	0.8
1.1	1.2	-	-	0.7	0.8	0.8
0.8	1.0	-	-	0.7	0.8	0.8
0.6	0.7	-	-	0.7	0.7	0.7
-	-	-	-	0.6	0.7	0.7
-	-	-	-	-	0.6	-



HaV



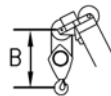
7.0 m



m	46.1 m					
	9.2 m			17.6 m		
	0°	20°	40°	0°	20°	40°
t	t	t	t	t	t	
10.0	3.8	-	-	-	-	-
12.0	3.8	-	-	1.5	-	-
14.0	3.8	3.4	-	1.5	-	-
16.0	3.8	3.4	3.0	1.5	-	-
18.0	3.7	3.2	2.9	1.5	1.4	-
20.0	3.6	3.1	2.8	1.5	1.4	-
22.0	3.4	3.0	2.7	1.4	1.4	-
24.0	3.2	2.8	2.6	1.4	1.4	1.2
26.0	2.5	2.7	2.5	1.3	1.4	1.1
28.0	2.0	2.3	2.4	1.3	1.3	1.1
30.0	1.5	1.8	2.1	1.3	1.3	1.1
32.0	1.1	1.4	1.6	1.2	1.2	1.1
34.0	0.8	1.0	1.2	1.0	1.2	1.1
36.0	-	0.7	0.9	0.7	1.2	1.0
38.0	-	-	0.6	-	0.9	1.0
40.0	-	-	-	-	0.6	0.9
42.0	-	-	-	-	-	0.6

m	50.0 m					
	9.2 m			17.6 m		
	0°	20°	40°	0°	20°	40°
t	t	t	t	t	t	
-	-	-	-	-	-	-
2.8	-	-	-	-	-	-
2.8	2.8	-	-	1.0	-	-
2.8	2.8	2.6	-	1.0	-	-
2.8	2.7	2.5	-	1.0	-	-
2.7	2.5	2.4	-	1.0	1.0	-
2.5	2.4	2.3	-	1.0	1.0	-
2.4	2.3	2.1	-	1.0	1.0	1.0
2.2	2.1	2.0	-	1.0	1.0	1.0
1.9	2.0	1.9	-	1.0	1.0	1.0
1.5	1.8	1.8	-	0.9	1.0	1.0
1.1	1.4	1.6	-	0.9	1.0	1.0
0.7	1.0	1.2	-	0.8	0.9	1.0
-	0.7	0.9	-	0.7	0.9	0.9
-	-	-	-	-	0.8	0.9
-	-	-	-	-	0.6	0.8
-	-	-	-	-	-	0.6

## Hook Block / Crane hook Crochet mouflé / Crochet simple



## Unterflasche / Hakengehänge Kraanblok / Kraanhaak

Capacity Capacité Tragfähigkeit Capaciteit	Number of sheaves Nombre de poulies Anzahl der Rollen Aantal schijven	Number of lines Nombre de brins Strangzahl Aantal parten	Weight Poids Gewicht Gewicht	"B"
SWL 60.5 t	5	11	650 kg	2.0 m
SWL 38.5 t	3	7	550 kg	1.8 m
SWL 16.5 t	1	3	350 kg	1.8 m