

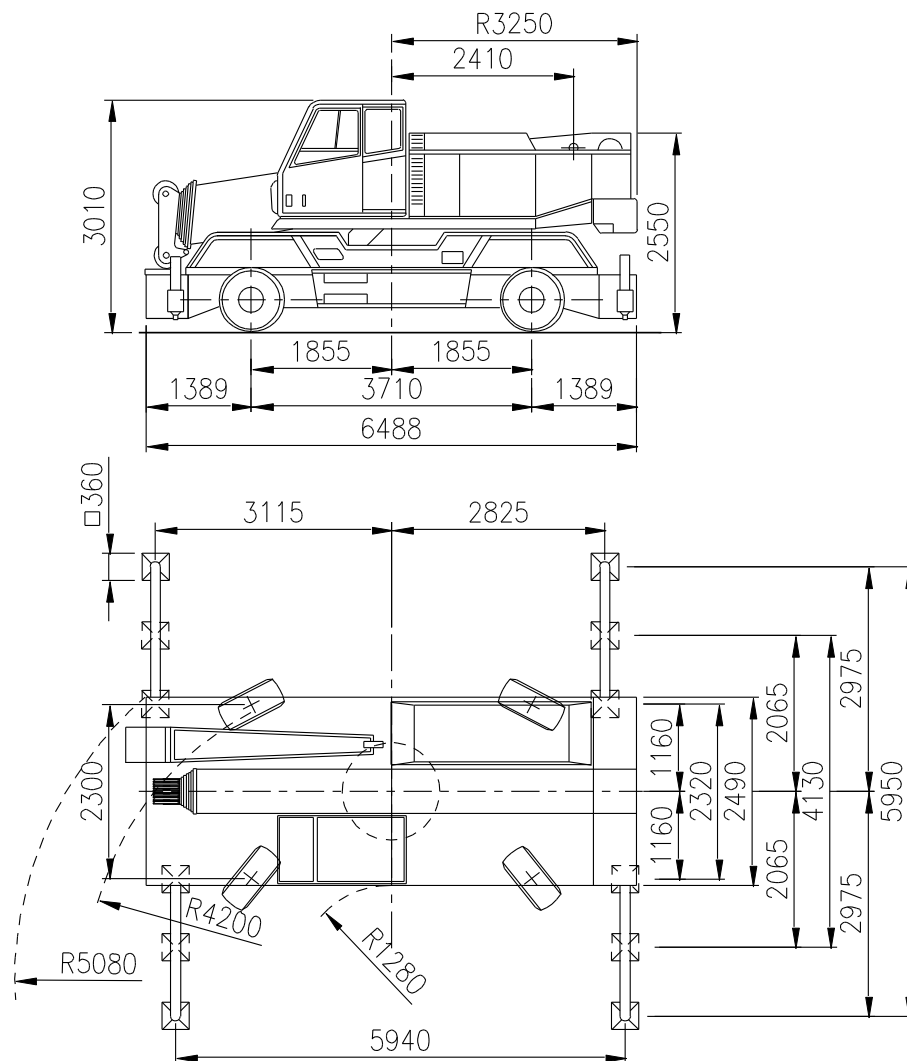


**sarens**  
group

[www.sarens.com](http://www.sarens.com)

## COMPACT TRUCK CT 2

**35 TON**



Axle load / Charge par essieu / Achslast / Aslast	: 2 x 12 t	(☐ 0 t)
Total weight / Poids total / Gesamtgewicht / Totaal gewicht	: 24 t	(☐ 0 t)
Tyres / Pneus / Bereifung / Banden	: 14.00 R 24	

nothing too heavy, nothing too high





# COMPACT TRUCK CT 2

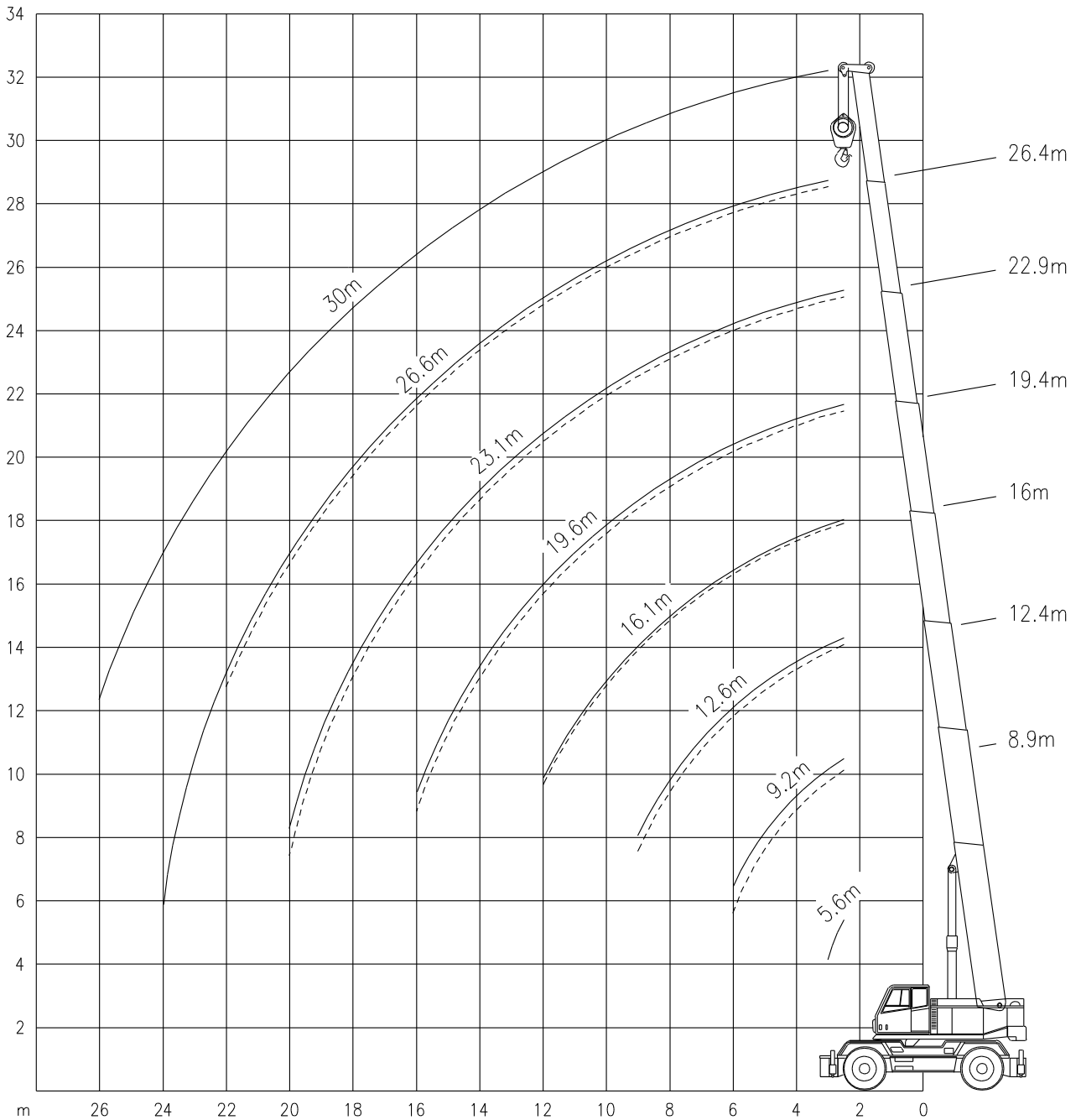
Working ranges  
Portées

**35 TON**

Arbeitsbereiche  
Werkbereich

**Ha**

1/200



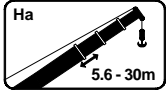


# COMPACT TRUCK CT 2

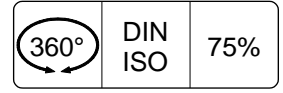
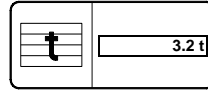
## 35 TON

Lifting capacities  
Capacités

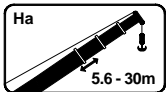
Tragfähigkeiten  
Capaciteiten



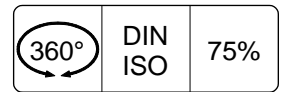
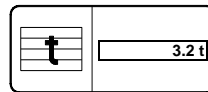
Ha



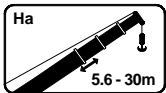
m	5.6 m								3.2 t							
	5.6 m	9.2 m	12.6 m	16.1 m	19.6 m	23.1 m	26.6 m	30.0 m	5.6 m	8.4 m	12.4 m	16.0 m	19.4 m	22.9 m	26.4 m	
2.5	18.7	35.0	25.0	23.0	19.0	15.7	-	-	18.7	25.0	21.0	18.3	16.1	12.1	-	
3.0	14.5	32.0	25.0	21.5	18.2	15.2	12.1	9.5	14.5	23.5	19.0	16.8	15.0	12.1	9.5	
4.0	-	27.0	22.0	18.5	16.2	13.8	12.1	9.5	-	19.5	16.0	14.2	12.9	11.7	9.4	
5.0	-	21.0	19.3	16.0	14.1	12.3	10.8	8.9	-	16.5	13.8	12.3	11.1	10.3	8.5	
6.0	-	17.0	16.6	14.0	12.4	10.9	9.8	8.1	-	14.5	12.0	10.6	9.8	9.2	7.8	
7.0	-	-	13.3	12.4	11.0	9.9	8.9	7.5	-	-	10.4	9.4	8.6	8.2	7.2	
8.0	-	-	10.1	10.4	9.9	8.9	8.0	6.9	-	-	9.3	8.2	7.7	7.4	6.6	
9.0	-	-	7.9	8.2	8.6	8.0	7.4	6.5	-	-	8.1	7.4	7.0	6.8	6.1	
10.0	-	-	-	6.6	7.0	7.3	6.8	6.0	-	-	-	6.7	6.3	6.2	5.5	
12.0	-	-	-	4.5	4.8	5.2	5.5	5.1	-	-	-	5.3	5.1	5.1	4.7	
14.0	-	-	-	-	3.4	3.8	4.1	4.4	-	-	-	-	4.1	4.4	4.1	
16.0	-	-	-	-	2.5	2.8	3.1	3.4	-	-	-	-	3.2	3.5	3.6	
18.0	-	-	-	-	-	2.1	2.4	2.6	-	-	-	-	-	2.7	3.0	
20.0	-	-	-	-	-	1.5	1.8	2.1	-	-	-	-	-	2.1	2.4	
22.0	-	-	-	-	-	-	1.4	1.6	-	-	-	-	-	-	2.0	
24.0	-	-	-	-	-	-	-	1.0	-	-	-	-	-	-	-	
26.0	-	-	-	-	-	-	-	1.0	-	-	-	-	-	-	-	



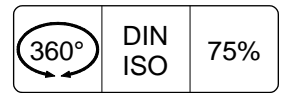
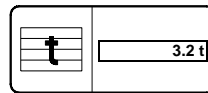
Ha



m	5.6 m								3.2 t							
	5.6 m	9.2 m	12.6 m	16.1 m	19.6 m	23.1 m	26.6 m	30.0 m	5.6 m	8.4 m	12.4 m	16.0 m	19.4 m	22.9 m	26.4 m	
2.5	18.7	32.8	25.0	23.0	19.0	15.7	-	-	18.7	25.0	21.0	18.3	16.1	12.1	-	
3.0	14.5	29.2	25.0	21.5	18.2	15.2	12.1	9.5	14.5	23.5	19.0	16.8	15.0	12.1	9.5	
4.0	-	22.0	21.4	18.5	16.2	13.8	12.1	9.5	-	19.5	16.0	14.2	12.9	11.7	9.4	
5.0	-	14.3	14.1	14.4	14.1	12.3	10.8	8.9	-	15.0	13.8	12.3	11.1	10.3	8.5	
6.0	-	10.0	9.9	10.2	10.5	10.9	9.8	8.1	-	10.5	10.8	10.6	9.8	9.2	7.8	
7.0	-	-	7.3	7.6	7.9	8.3	8.6	7.5	-	-	8.1	8.4	8.6	8.2	7.2	
8.0	-	-	5.6	5.8	6.2	6.5	6.9	6.9	-	-	6.3	6.4	7.0	7.3	6.6	
9.0	-	-	4.3	4.6	4.9	5.3	5.6	5.9	-	-	5.0	5.4	5.7	6.0	6.1	
10.0	-	-	-	3.6	3.9	4.3	4.6	4.9	-	-	-	4.4	4.7	5.0	5.3	
12.0	-	-	-	2.3	2.6	2.9	3.2	3.5	-	-	-	3.0	3.3	3.6	3.9	
14.0	-	-	-	-	1.7	2.0	2.3	2.6	-	-	-	-	2.4	2.6	2.9	
16.0	-	-	-	-	1.0	1.3	1.6	1.9	-	-	-	-	1.7	2.0	2.2	
18.0	-	-	-	-	-	0.8	1.1	1.4	-	-	-	-	-	1.5	1.7	
20.0	-	-	-	-	-	0.5	0.7	1.0	-	-	-	-	-	1.1	1.3	
22.0	-	-	-	-	-	-	0.4	0.7	-	-	-	-	-	-	1.0	
24.0	-	-	-	-	-	-	-	0.4	-	-	-	-	-	-	-	



Ha



m	5.6 m								3.2 t							
	5.6 m	9.2 m	12.6 m	16.1 m	19.6 m	23.1 m	26.6 m	30.0 m	5.6 m	8.4 m	12.4 m	16.0 m	19.4 m	22.9 m	26.4 m	
2.5	18.7	22.2	21.4	21.2	19.0	15.7	-	-	18.7	23.2	21.0	18.3	16.1	12.1	-	
3.0	14.5	16.2	15.7	15.8	15.9	15.2	12.1	9.5	14.5	16.9	16.8	16.8	15.0	12.1	9.5	
4.0	-	9.8	9.6	9.9	10.1	10.5	10.8	9.5	-	10.4	10.5	10.8	11.1	11.4	9.4	
5.0	-	6.5	6.4	6.7	7.0	7.3	7.7	8.0	-	7.0	7.2	7.5	7.9	8.2	8.5	
6.0	-	4.5	4.5	4.8	5.1	5.4	5.7	6.0	-	5.0	5.2	5.5	5.9	6.2	6.5	
7.0	-	-	3.2	3.5	3.8	4.1	4.4	4.7	-	-	3.9	4.2	4.5	4.8	5.1	
8.0	-	-	2.3	2.5	2.8	3.2	3.5	3.7	-	-	2.9	3.2	3.5	3.8	4.1	
9.0	-	-	1.6	1.8	2.1	2.4	2.7	3.0	-	-	2.2	2.5	2.8	3.1	3.4	
10.0	-	-	-	1.3	1.6	1.9	2.2	2.4	-	-	-	1.9	2.2	2.5	2.8	
12.0	-	-	-	0.5	0.8	1.0	1.3	1.6	-	-	-	1.1	1.4	1.7	1.9	
14.0	-	-	-	-	-	0.5	0.8	1.0	-	-	-	-	0.8	1.1	1.4	
16.0	-	-	-	-	-	-	-	0.6	-	-	-	-	0.4	0.7	0.9	
18.0	-	-	-	-	-	-	-	-	-	-	-	-	-	-	0.6	

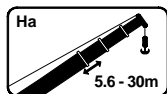


# COMPACT TRUCK CT 2

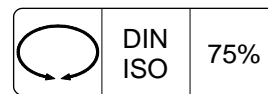
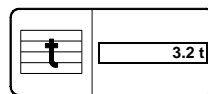
## 35 TON

Lifting capacities  
Capacités

Tragfähigkeiten  
Capaciteiten



Ha



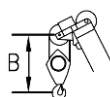
m	0°				360°			
	5.6 m	8.9 m	12.4 m	16.0 m	5.6 m	8.9 m	12.4 m	16.0 m
2.5	13.6	12.5	12.1	11.5	11.7	10.9	10.7	10.5
3.0	12.1	11.3	10.7	10.3	9.7	9.3	9.1	9.0
4.0	-	9.1	8.7	8.5	-	7.0	6.8	6.8
5.0	-	7.6	7.2	7.2	-	5.3	5.2	5.4
6.0	-	6.4	6.1	6.0	-	4.1	4.1	4.2
7.0	-	-	5.2	5.1	-	-	3.2	3.4
8.0	-	-	4.4	4.3	-	-	2.5	2.6
9.0	-	-	3.8	3.8	-	-	1.9	2.0
10.0	-	-	-	3.3	-	-	-	1.6
12.0	-	-	-	2.3	-	-	-	0.9

Working speeds  
Vitesses de travail

Arbeitsgeschwindigkeiten  
Werksnelheden

Mechanisms Mécanismes Antriebe Aandrijvingen	Speeds Vitesses Geschwindigkeiten Snelheden	Rope diameter Diamètre du câble Seildurchmesser Kabeldiameter	Single line pull Effort sur brin simple Zulässiger Seilzug je strang Toegelaten trekkracht / part	Length of ropes Longueur des cables Länge der Seile Kabellengte
Main hoist Levage sur flèche Hubwerk 1 Hijslier 1	0 – 115 m/min	13 mm	29 kN	168 m
Telescoping hoist Treuil de télescopage Telewinde Telescooplief		15 mm	60 kN	33.2 m
Slewing gear Orientation Drehwerk Zwenkwerk	0 - 2.5 RPM			
Travel speed Vitesse sur route Fahrgeschwindigkeit Rijsnelheid	0 – 70 km/h			
Booming up Relever la flèche Aufwippen Optoppen	-8° - 81°			60 sec
Telescope Télescoper Teleskopieren Telescoperen	9.2 - 30m			70 sec

Hook Block / Crane hook  
Crochet mouflé / Crochet simple



Unterflasche / Hakengehänge  
Kraanblok / Kraanhaak

Capacity Capacité Tragfähigkeit Capaciteit	Number of sheaves Nombre de poulies Anzahl der Rollen Aantal schijven	Number of lines Nombre de brins Strangzahl Aantal parten	Weight Poids Gewicht Gewicht	"B"
SWL 20 t	3	7	280 kg	