

SARENS MODULAR BARGES



- **DISCOVER OUR SARENS MODULAR BARGES**

- Several flat top barge configurations that can be assembled from multiple modules
- Certified for inland waterways

- **GENERAL INFORMATION**

Flag / Port of Registry: Belgium / Wolvertem

- **DIMENSIONS MODULE**

Module length – 40ft: 12,192m
Module length – 20ft: 6,058m
Module length – Bow: 4m
Module width: 2,438m
Module height: 2,895m
Module weight – 40ft: 22T
Module weight – 20ft: 11T

- **TONNAGE**

Uniform Deck Load 10T/m²

- **BALLAST SYSTEM**

Module 40ft: 1 ballast tank
Module 20ft: 1 ballast tank
2 Manholes per tank
Ballasting with external ballast pumps

- **20FT & 40FT MODULES**

CSC certified high cube containers (without gooseneck)

- **SELF-PROPELLED**

Brand: Hydro-Armor
Model: Type 2700
Propulsion force: 3,6 T/ thruster
Steering: ± 60°
Operation: Single & synchronized

- **MISCELLANEOUS**

Spud holes of diameter 610mm or 1219mm
Removable mooring bollards
Removable handrailing
Wide range of possibilities in different configurations

SARENS MODULAR BARGES

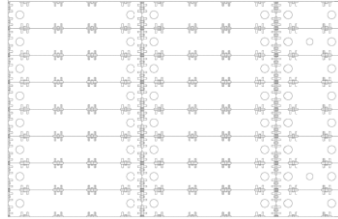
SARENS | BARGES

• CONFIGURATIONS

Assembly: SMB3019

Configuration: 8x 40ft + 40ft + 20ft modules

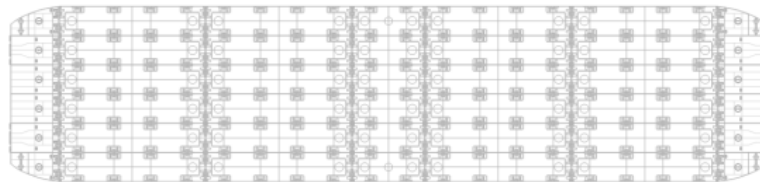
Dimensions: 30,442m x 19,504m



Assembly: FFI

Configuration: 6x Bow + 40ft + 40ft + 20ft + 40ft + 40ft + Bow modules

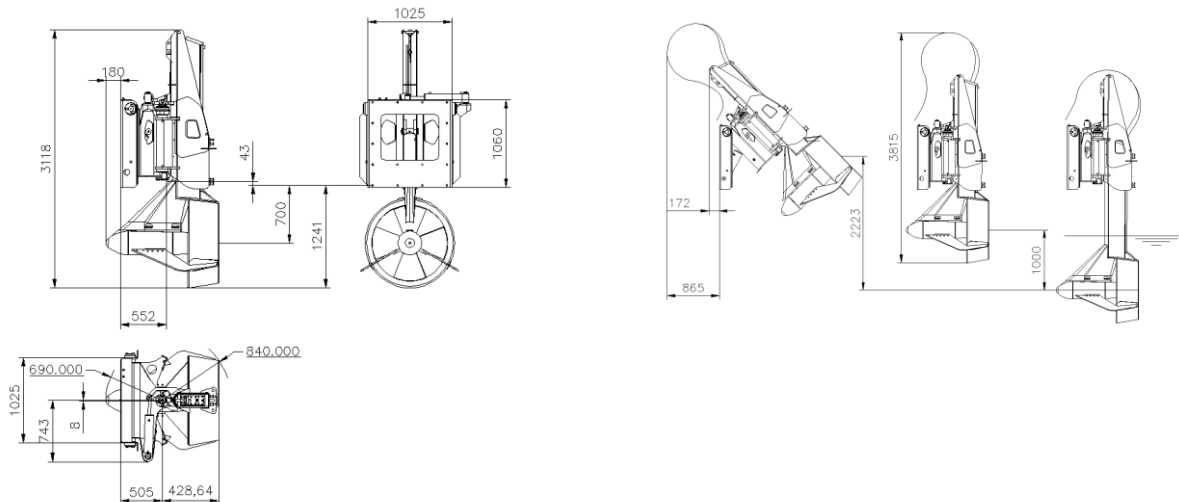
Dimensions: 62,826m x 14,628m



Assembly: Upon request

Wide range of possibilities in different configurations

• PROPULSION



• SARENS NV

Autoweg 10
1861 Wolvertem, Belgium
T: +32 52 319 319
E: maritime@sarens.com
W: www.sarens.com