

BARGE CAROLINE



DISCOVER OUR 400FT FLAT TOP DECK CARGO BARGE

GENERAL INFORMATION

Flag / Port of Registry: Belgium / Ghent
Official Number: O-6725
Built: 2015, China
Classification: Bureau Veritas
IHX HULL, Pontoon,
Unrestricted navigation

DIMENSIONS

Length: 122 m
Beam: 36,6 m
Depth: 7,6 m
Draught (summer): 5,8 m
Draught (min.): 1,2 m
Web frame spacing: 2,5 m

TONNAGE

Gross Tonnage: 9.113
Net Tonnage: 2.734
Lightship Weight: 4.585T
Deadweight: 19.543T
Uniform Deck Load: 20 T/m²

ALL THE NAMES OF OUR BARGES COME FROM MEMBERS OF THE BIG SARENS FAMILY. THE FOUNDER, FRANS SARENS, HAD 12 CHILDREN. THIS 400FT BARGE IS NAMED AFTER HIS SECOND CHILD AND FIRST DAUGHTER, CAROLINE.

CAPACITIES

Ballast tanks: 26
Total ballast capacity: 27.857 m³
Fuel oil tank: 20 m³
Oily water tank: 27 m³
Cooling water capacity: 5 + 88 m³

TOWING BRIDLE

4 Towing brackets on the bow, SWL 200T
2 Stud link chain cables, size 73 mm x 27,5 m
3 Green Pin shackles, SWL 150T
1 Delta plate, SWL 300T

EMERGENCY TOWING LINE

1 Stud link chain cable, size 73 mm x 10 m
1 Green Pin shackle, SWL 150T
1 Steel wire rope, size 76 mm x 110 m
1 Floating polypropylene line
1 Floating buoy

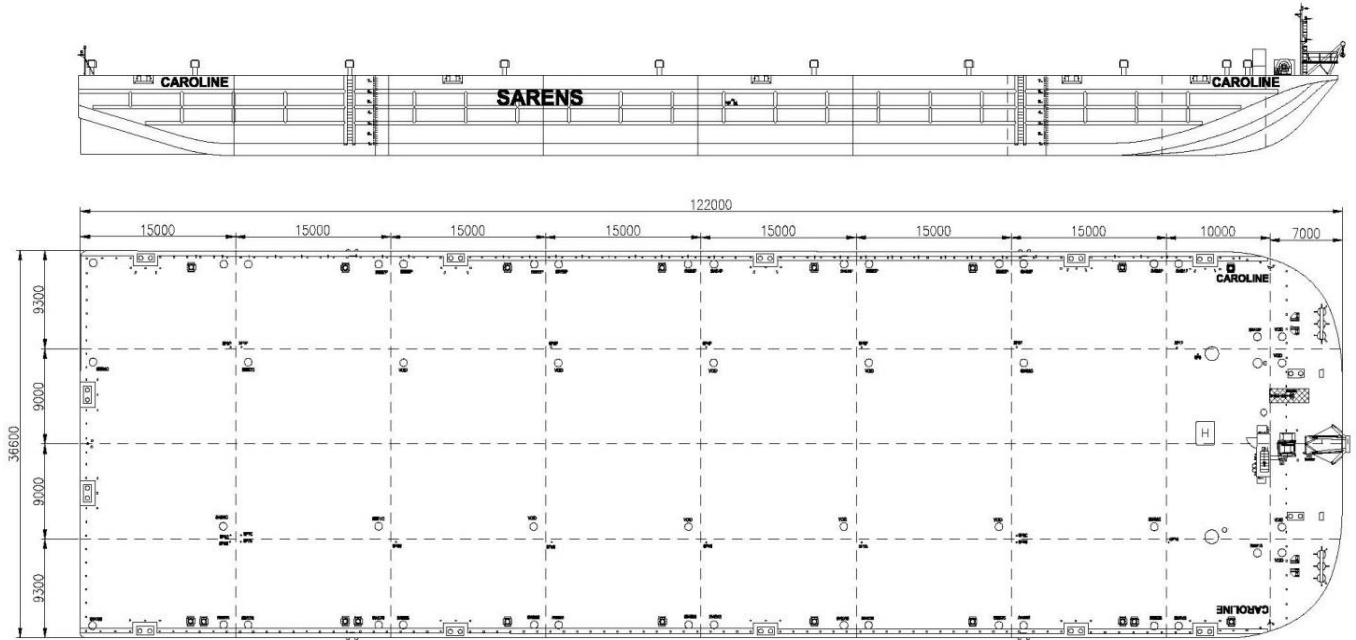
PUMP ROOM

2 Diesel generating sets, 440 V 60 Hz 187,5 kVA
2 Ballast pumps, 1000 m³/h each

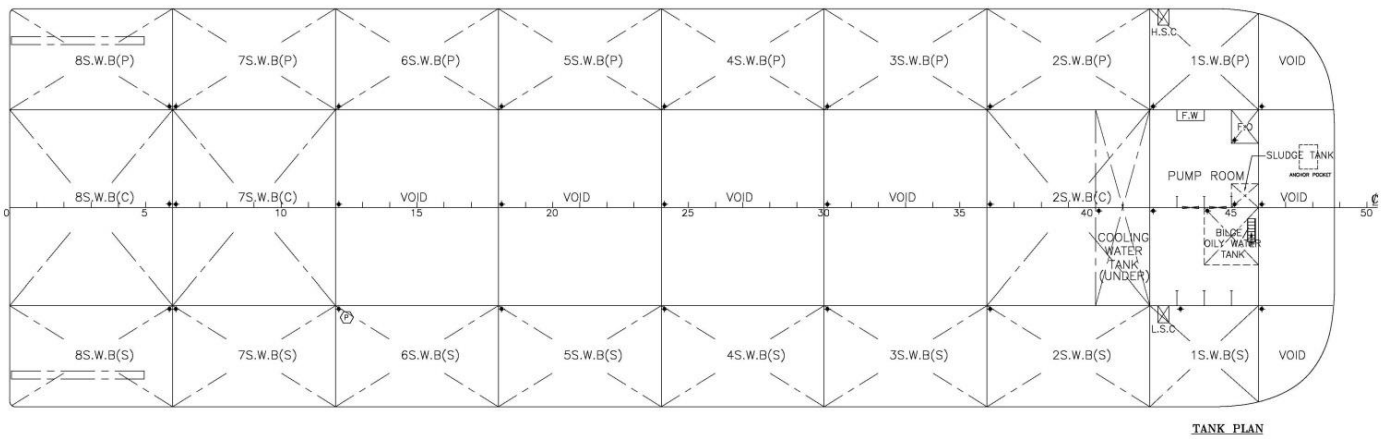
MISCELLANEOUS

1 High Holding Power 6T stockless bow anchor
Removable handrailing
Removable barge furniture

GENERAL ARRANGEMENT



TANK PLAN



CONTACT

SARENS NV
Autoweg 10, 1861 Wolvertem
Belgium
+32 52 319 319
maritime@sarens.com
www.sarens.com