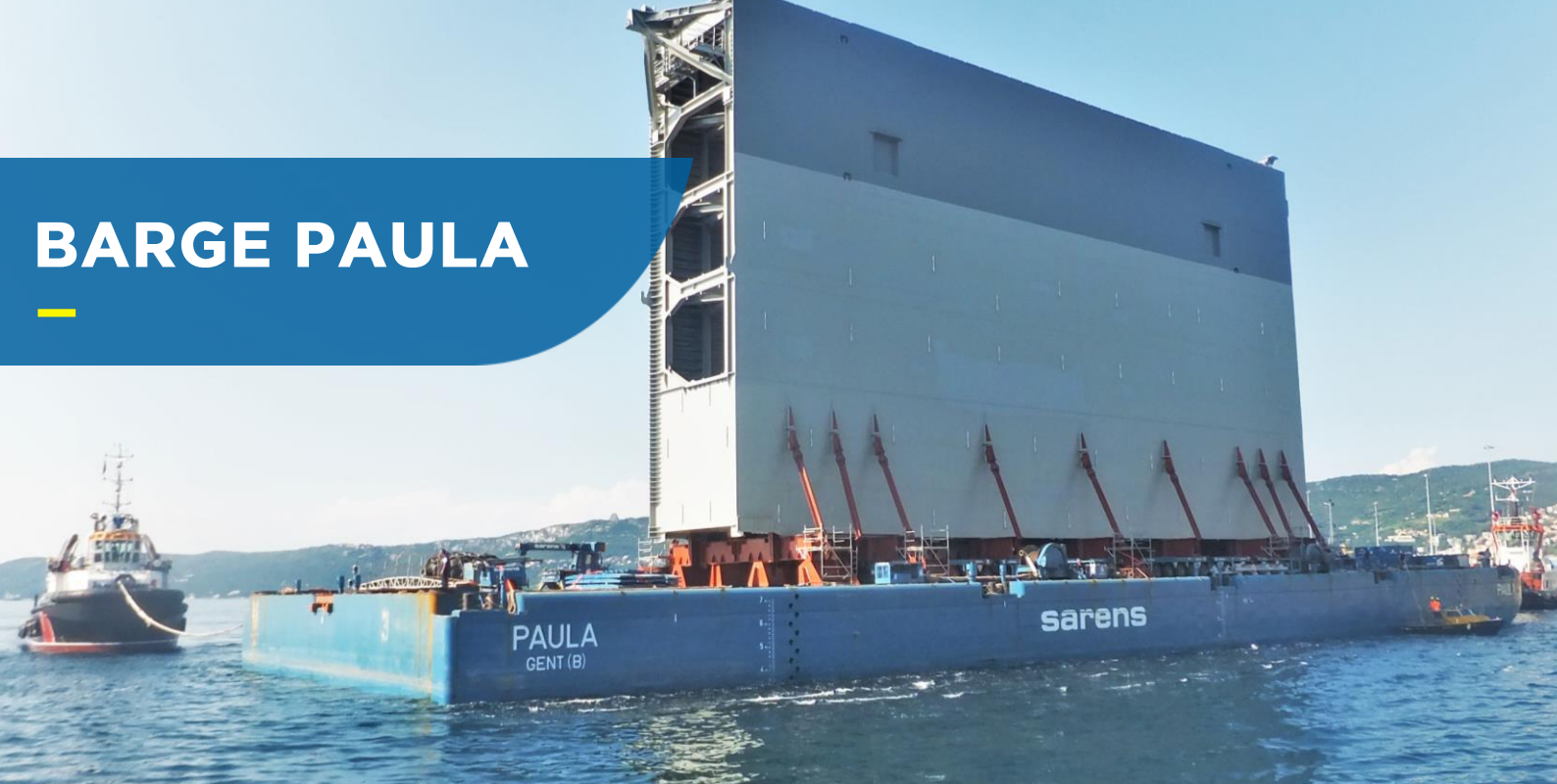


# BARGE PAULA



## DISCOVER OUR 330FT FLAT TOP DECK CARGO BARGE

### GENERAL INFORMATION

Flag/Port of Registry:	Belgium / Ghent
Official Number:	O-6641
Built:	2012, Croatia
Classification:	Bureau Veritas I ✕ HULL • MACH, Pontoon - no propulsion Unrestricted navigation

### DIMENSIONS

Length:	100 m
Beam:	33 m
Depth:	7,6 m
Draught (summer):	6,02 m
Draught (min.):	1,21 m
Web frame spacing:	2,5 m

### CAPACITIES

Ballast tanks:	19
Total ballast capacity:	21.518 m <sup>3</sup>
Fuel oil tank:	13 m <sup>3</sup>

**ALL THE NAMES OF OUR BARGES COME FROM MEMBERS OF THE BIG SARENS FAMILY. THE FOUNDER, FRANS SARENS, HAD 12 CHILDREN. THIS 330FT BARGE IS NAMED AFTER HIS SIXTH CHILD AND SECOND DAUGHTER, PAULA.**

### TONNAGE

Gross Tonnage:	6.690
Net Tonnage:	2007
Lightship Weight:	3.238T
Deadweight:	15.492T
Uniform Deck Load:	25 T/m <sup>2</sup>

### PUMP ROOM

2 Internal direct-driven ballast pumps, 500 m<sup>3</sup>/h each  
2 JCB Dieselmex engines, Tier 3, 74 kW / 100 hp each

### TOWING BRIDLE

4 Towing brackets on the bow, SWL 150T  
2 Stud link chain cables, size 58 mm x 18 m, MBL 260T  
3 Green Pin shackles, SWL 85T  
1 Delta plate, SWL 85T

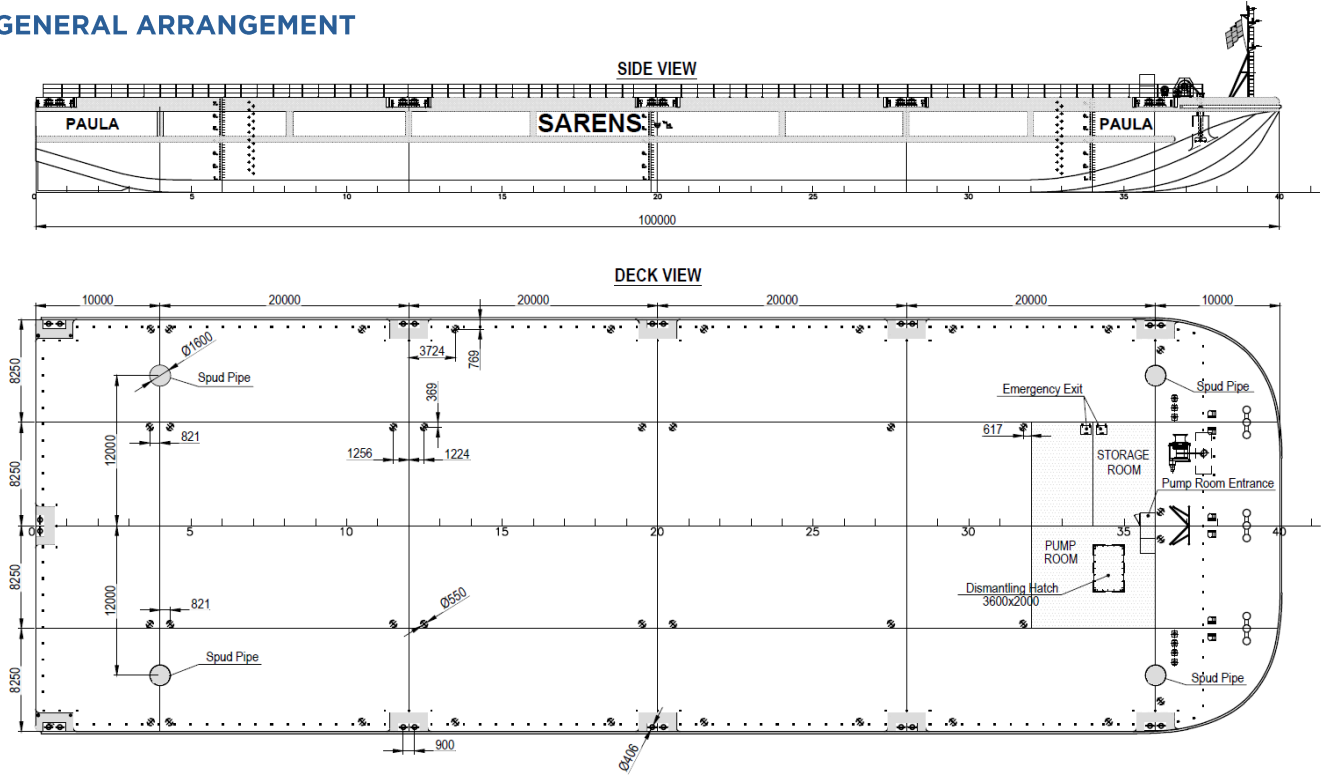
### EMERGENCY TOWING LINE

1 Stud link chain cable, size 58 mm x 6 m, MBL 260T  
1 Green Pin shackle, SWL 120T  
1 Steel wire rope, size 58 mm x 80 m, MBL 220T  
1 Floating polypropylene line  
1 Floating buoy

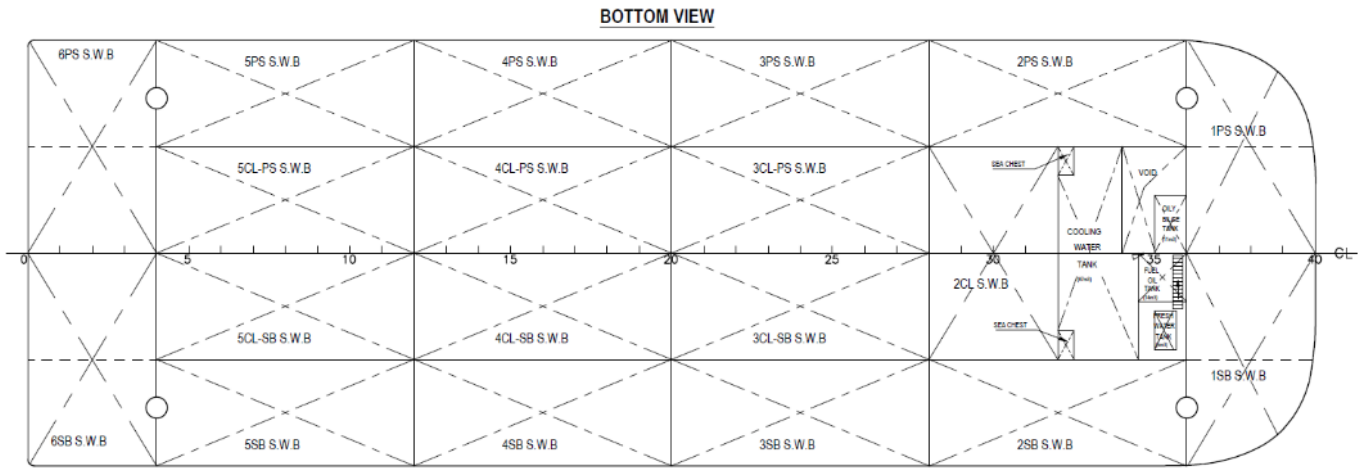
### MISCELLANEOUS

1 x 5T delta flipper anchor  
4 Spud holes  
Removable handrailing  
Removable barge furniture

**GENERAL ARRANGEMENT**



**TANK PLAN**



**CONTACT**

SARENS NV  
 Auteweg 10, 1861 Wolvertem  
 Belgium  
 +32 52 319 319  
 maritime@sarens.com  
 www.sarens.com