

BARGE LOUIS



DISCOVER OUR 330FT FLAT TOP DECK CARGO BARGE

GENERAL INFORMATION

Flag/Port of Registry:	Belgium / Ghent
Official Number:	O-6598
Built:	2011, Croatia
Classification:	Bureau Veritas I ✕ HULL • MACH, Pontoon – no propulsion Unrestricted navigation

DIMENSIONS

Length:	100 m
Beam:	33 m
Depth:	7,6 m
Draught (summer):	6,02 m
Draught (min.):	1,21 m
Web frame spacing:	2,5 m

CAPACITIES

Ballast tanks:	19
Total ballast capacity:	21.518 m ³
Fuel oil tank:	13 m ³

ALL THE NAMES OF OUR BARGES COME FROM MEMBERS OF THE BIG SARENS FAMILY. THE FOUNDER, FRANS SARENS, HAD 12 CHILDREN. THIS 330FT BARGE IS NAMED AFTER HIS ELDEST SON, LOUIS.

TONNAGE

Gross Tonnage:	6.690
Net Tonnage:	2007
Lightship Weight:	3.238T
Deadweight:	15.492T
Uniform Deck Load:	25 T/m ²

PUMP ROOM

2 Internal direct-driven ballast pumps, 500 m³/h each
2 JCB Dieselmex engines, Tier 3, 74 kW / 100 hp each

TOWING BRIDLE

4 Towing brackets on the bow, SWL 150T
2 Stud link chain cables, size 58 mm x 18 m, MBL 260T
3 Green Pin shackles, SWL 85T
1 Delta plate, SWL 85T

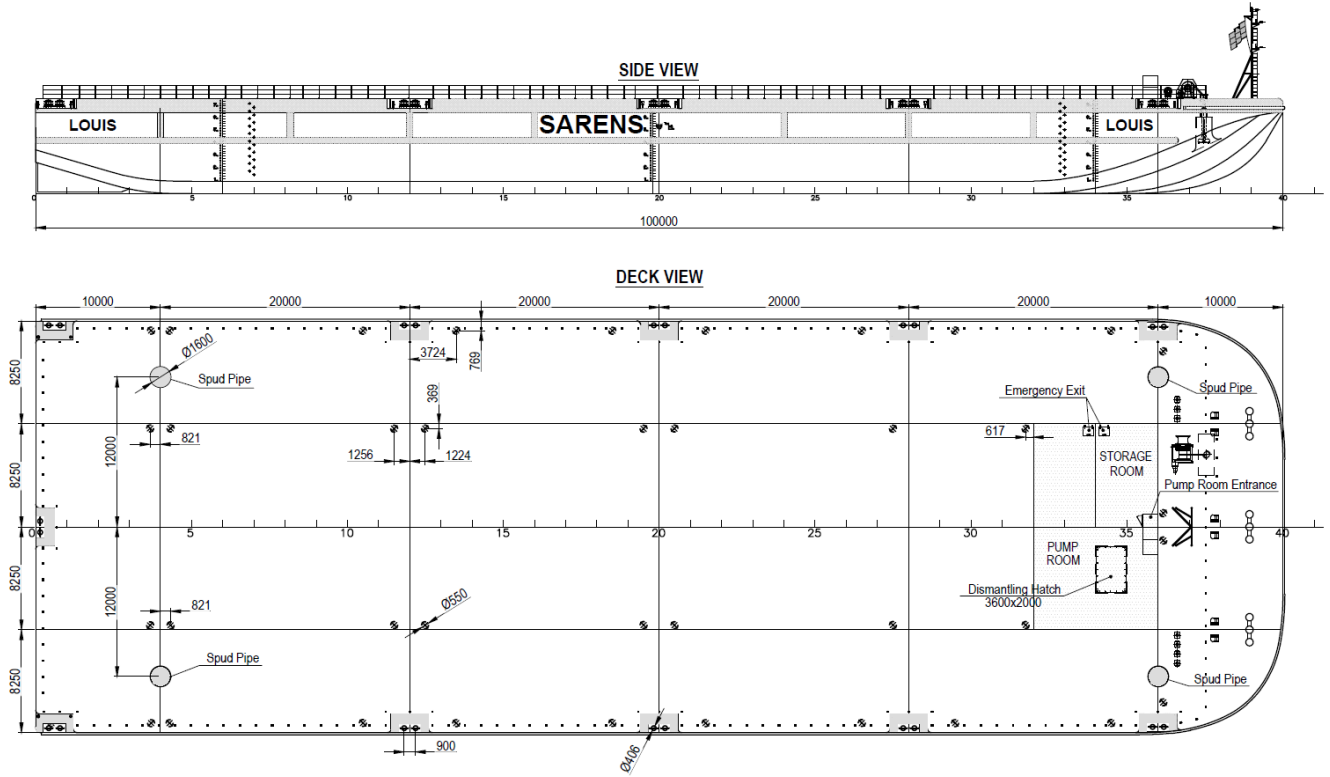
EMERGENCY TOWING LINE

1 Stud link chain cable, size 58 mm x 6 m, MBL 260T
1 Green Pin shackle, SWL 120T
1 Steel wire rope, size 58 mm x 80 m, MBL 220T
1 Floating polypropylene line
1 Floating buoy

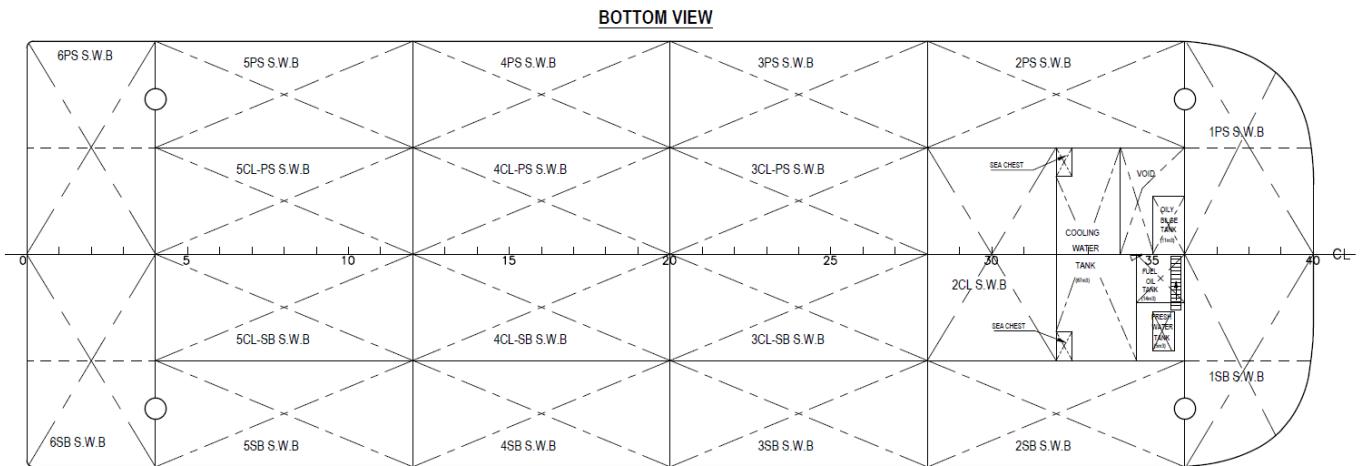
MISCELLANEOUS

1 x 5T delta flipper anchor
4 Spud holes
Removable handrailing
Removable barge furniture

GENERAL ARRANGEMENT



TANK PLAN



CONTACT

SARENS NV
Autoweg 10, 1861 Wolvertem
Belgium
+32 52 319 319
maritime@sarens.com
www.sarens.com